

Tuba

# GO GREEN GO

♩ = 120



Trombone

# GO GREEN GO

$\text{♩} = 120$



6



Trumpet in B $\flat$

# GO GREEN GO

$\text{♩} = 120$

top line 3rd time only

Musical notation for the first staff, measures 1-4. The key signature has one flat (B $\flat$ ). The time signature is 4/4. The tempo is marked as quarter note = 120. The notation includes a repeat sign at the beginning. The melody consists of eighth and quarter notes. The bass line consists of quarter notes and rests.

5

Musical notation for the second staff, measures 5-8. The notation continues from the first staff. The melody and bass line follow the same pattern as the first staff, ending with a double bar line.

Mellophone

# GO GREEN GO

$\text{♩} = 120$



Baritone Sax

# GO GREEN GO

$\text{♩} = 120$



Tenor Sax

# GO GREEN GO

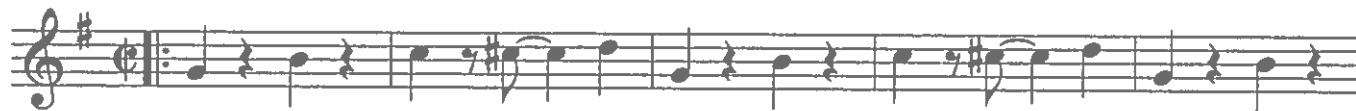
♩ = 120



Alto Sax

# GO GREEN GO

$\text{♩} = 120$



Bass Clarinet

# GO GREEN GO

♩ = 120

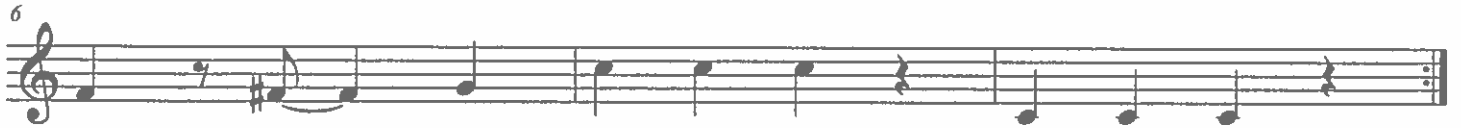




Clarinet in B $\flat$

# GO GREEN GO

$\text{♩} = 120$



Flute

# GO GREEN GO

$\text{♩} = 120$  3 times

