

NORTH ZULCH ISD

CAMPUS IMPROVEMENTS

CONSTRUCTION UPDATE

WING 100

- PUNCH LIST CORRECTIONS ARE NEARING COMPLETION.

WING 200

- PUNCH LIST CORRECTIONS ARE NEARING COMPLETION.

WING 400/GYM

- METAL PANEL ERECTIONS ARE COMPLETE.
- MILLWORK IS COMPLETE.

WING 500

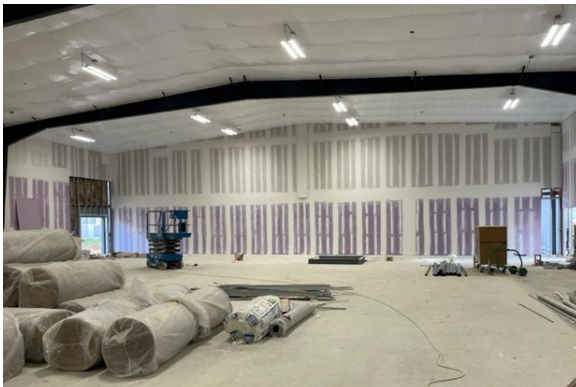
- BLOCK WORK IS IN PROGRESS.
- STRUCTURAL STEEL ERECTIONS ARE IN PROGRESS.
- ELECTRICAL ROUGH-IN IS IN PROGRESS.

EXTERIOR SITE WORK

- SEWER INSTALLATION IS COMPLETE.
- STORM DRAIN INSTALLATION IS IN PROGRESS.

COST SUMMARY

Total Budget:	\$5,202,991
Total Completed & Stored To Date:	\$2,175,064
Percentage Complete:	42%



DIFFERENT FROM THE GROUND UP

