

Coffee with the Counselor

ATTENDANCE



Today's Agenda

Why?

Myths

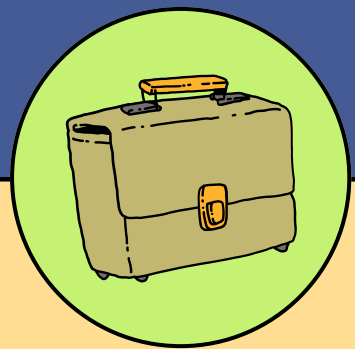
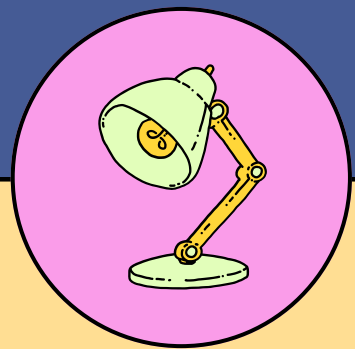
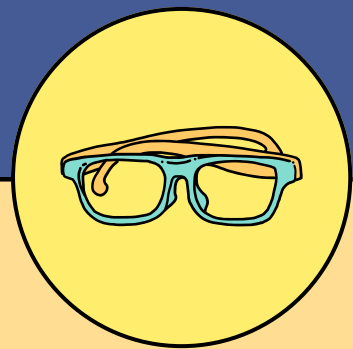
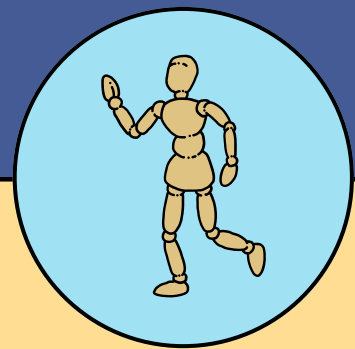
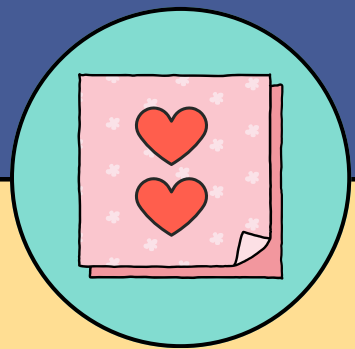
Impact on Wilmer

What is the policy?

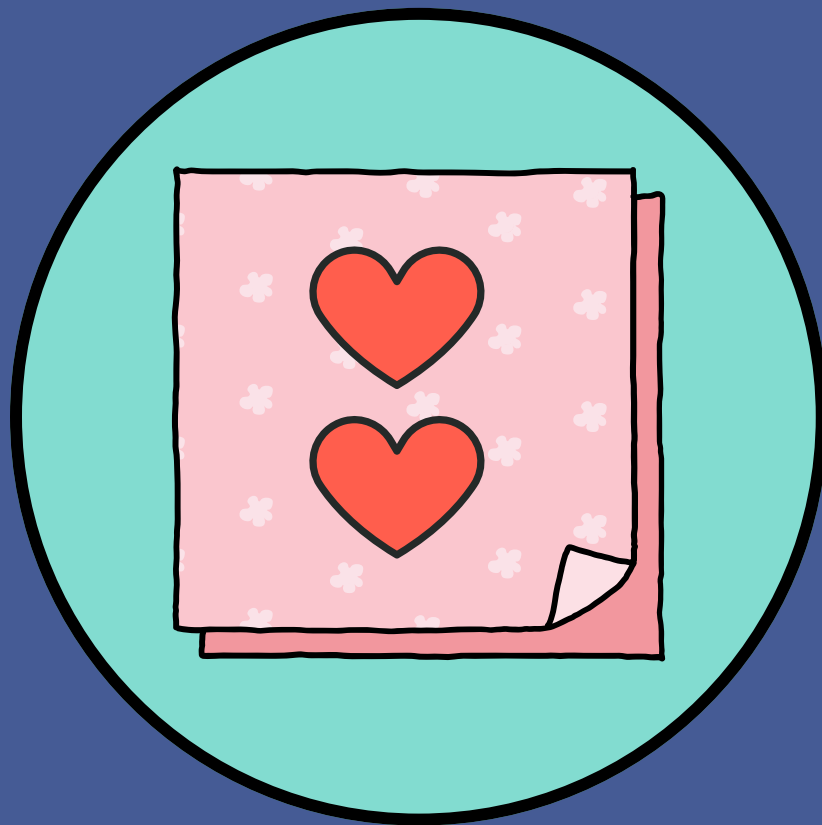
Chronic Ailment

Incentives

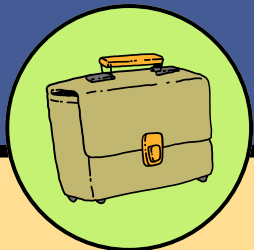
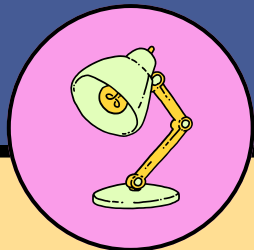
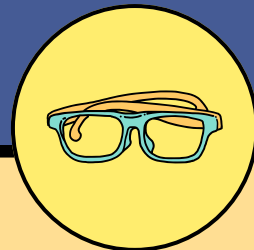
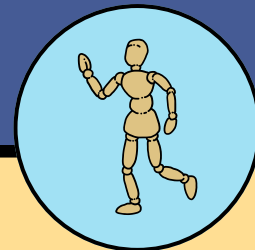
Concerns/Questions



Why is attendance Important?



- Absenteeism in the first month of school can predict poor attendance.
- Half the students who miss 2-4 days in September go on to miss nearly a month of school.
- Research shows that missing 10% of school (approx. 18 days) negatively affects a student's academic performance. That is just 2 days a month.
- By 6th grade, chronic absenteeism becomes the leading indicator that a student will drop out of high school.
- When students improve their attendance rates, they improve their academic prospects and chances of graduating.



Myths

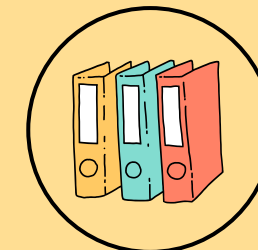
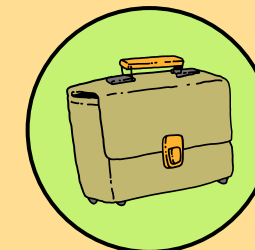
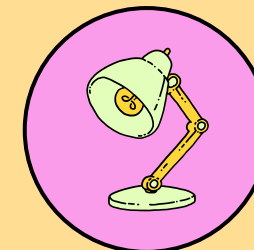
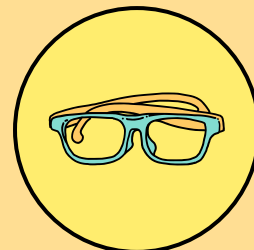
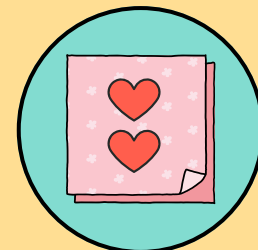
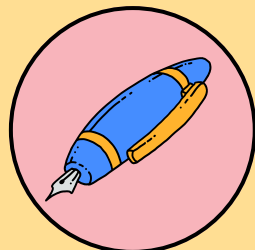


Myth:

Schools just want students to attend so they can get more money.

Fact:

Student attendance impacts class size and student resources. It does not impact teacher pay.

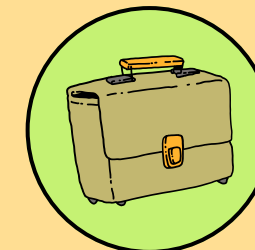
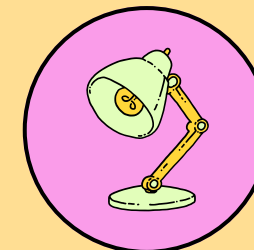
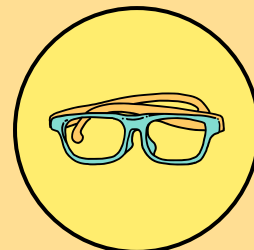
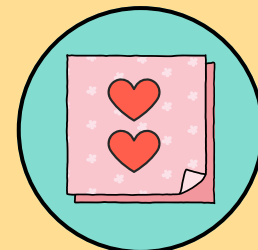
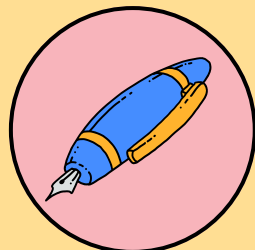


Myths



Myth:
Excused absences don't count.

Fact:
Excused absences can still negatively impact class size and student resources.



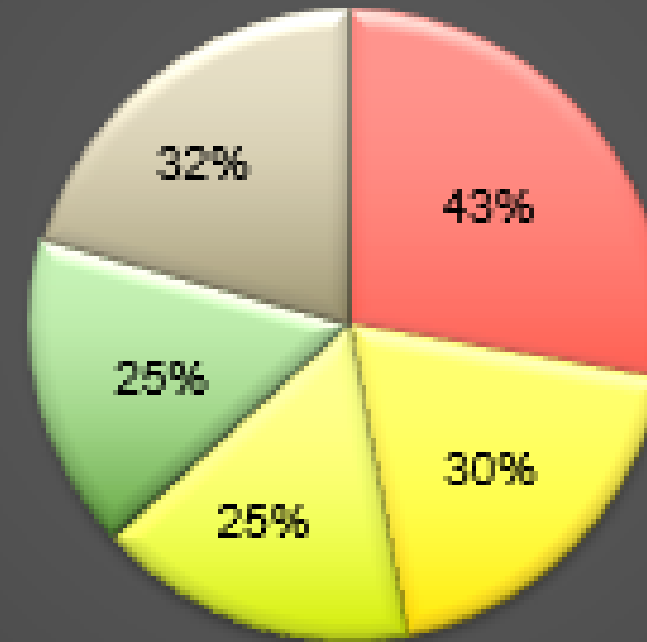
Wilmer's Attendance



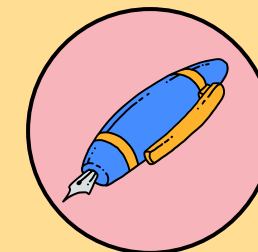
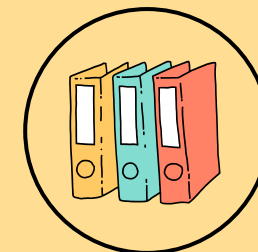
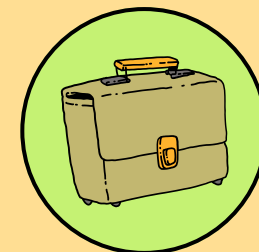
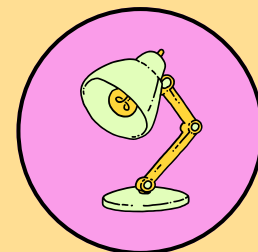
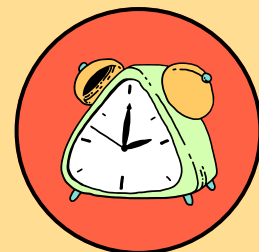
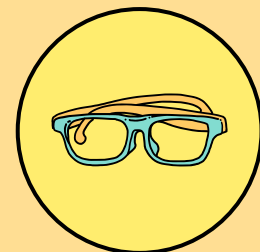
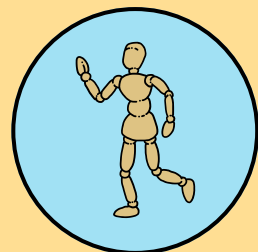
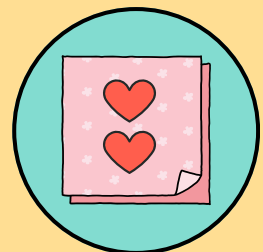
2023-2024

**118 students with
15 or more
absences**

15 or more absences by grade level



Kindergarten 1st 2nd 3rd 4th



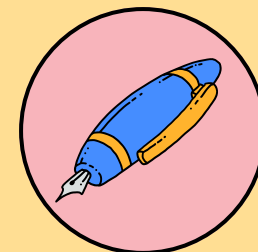
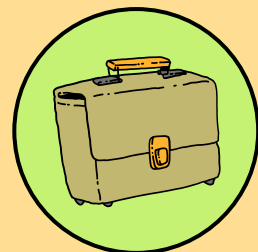
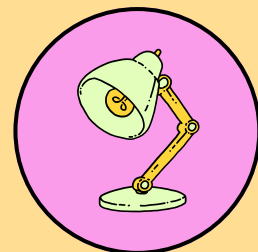
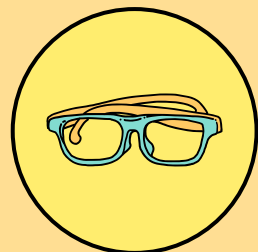
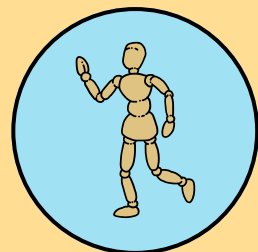
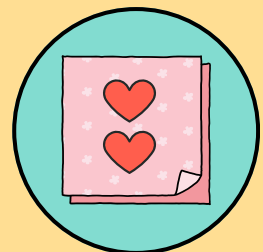
Wilmer's Attendance



Mid Year 2023-2024

The 33 students who had failing grades already had an average of 9 days missed in school.

Subject	1 st Quarter	2 nd Quarter	Semester Average	Absences
Math	33/E	73/C	53/E	22
Math	41/E	66/D	52/E	18
Math	43/E	71/C	57/E	4
Reading	42/E	30/E	36/E	12
Math	41/E	73/C	57/E	20
Math	54/E	60/D	57/E	14
Reading	66/D	51/E	58.5/E	6
Math	45/E	74/C	59.5/E	21



Let's look at the policy!

Suspensions= Unexcused

**Check out
before Noon
= Absence**



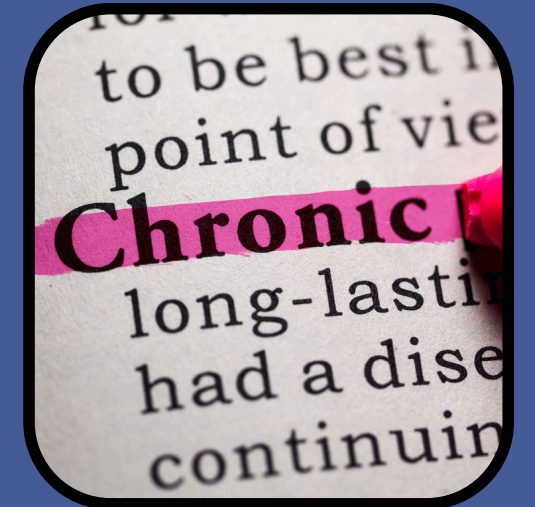
3 days to get
notes in



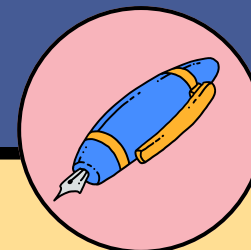
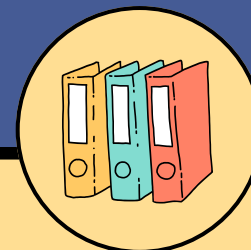
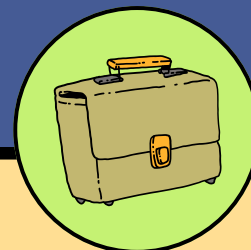
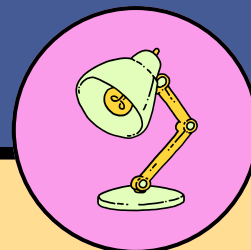
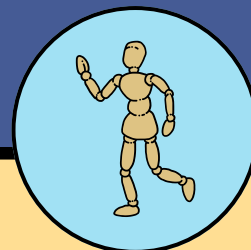
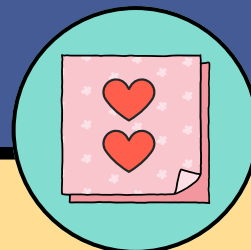
8 parent notes
a year



turn in a Dr. note
for appointments



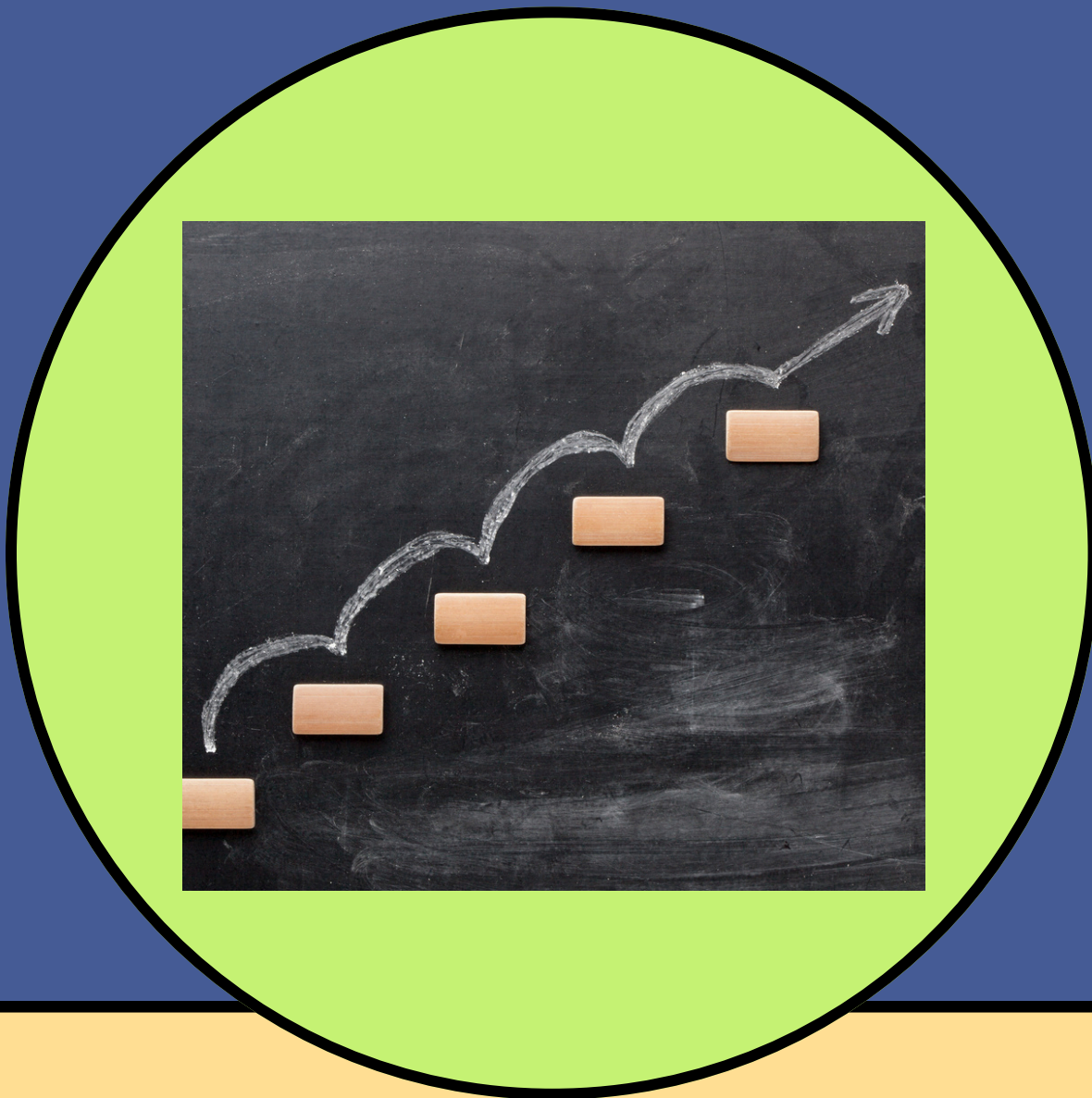
have a chronic ailment,
complete forms with
our nurse



Truancy Steps

District

Wilmer

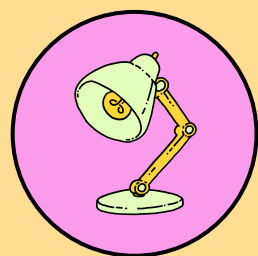
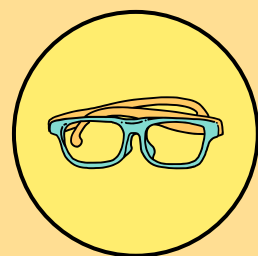
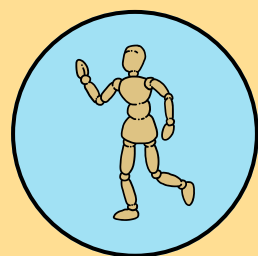
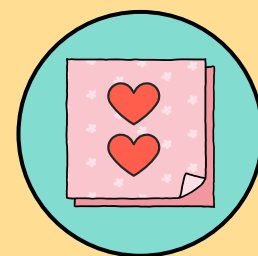


5 Unexcused
Absences=
Early Warning
TRUANCY

Do not attend EWT
OR additional
Unexcused absences
=Court Referral

Staff call to
check on
student

Conference
with staff



Chronic Ailment



How does that work?

Forms

Your doctor's office **MUST** complete the forms!

Every Semester

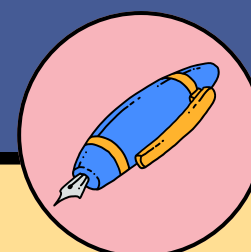
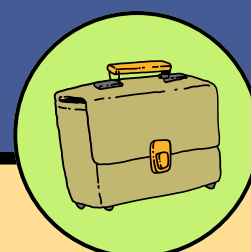
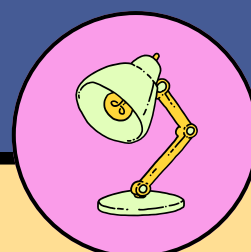
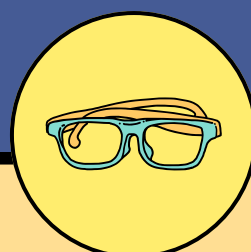
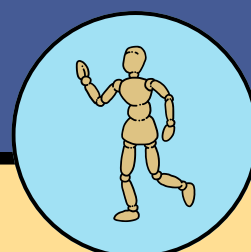
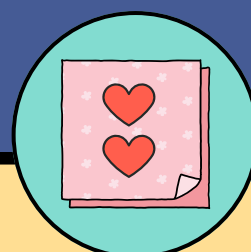
Forms **MUST** be updated every semester!

Stipulations

Your Dr. office will dictate how many days.

Notes

Your parent note **MUST** reference the C.A.



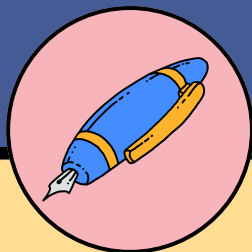
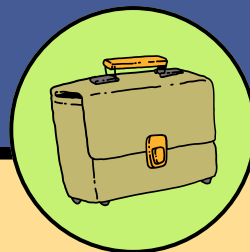
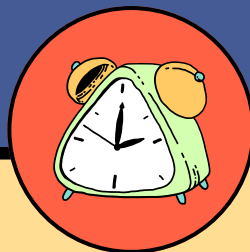
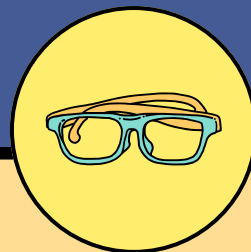
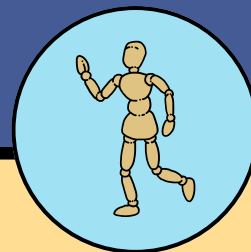
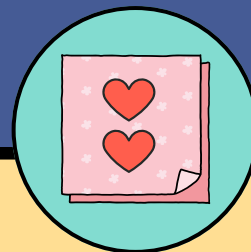
Reminders



We are here
to help!

If you are not
sure about your
student's
attendance,
please reach
out.

You CAN NOT wait
until you receive a
progress report or
report card to
check your
student's
attendance.



Positive Incentives

Beginning September 2nd!

All month= Glow Dance Party

Week 1

Duct tape a
staff member

Week 2

Ice cream
sundaes

Week 3

Picnic lunch
with a friend

Week 4

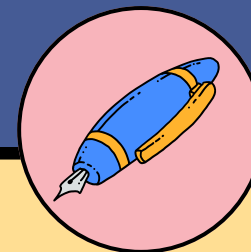
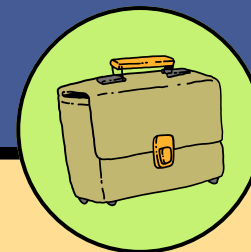
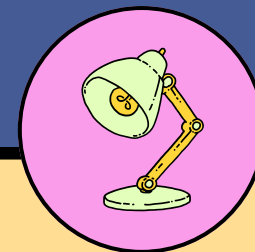
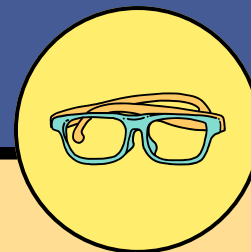
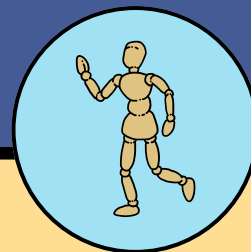
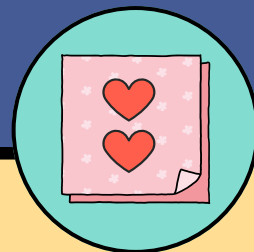
Extra recess
time



Parent Incentives

Attendance Out of Uniform Days Begin-
September 13th for

Questions or Concerns



Thank You for
Attending

