

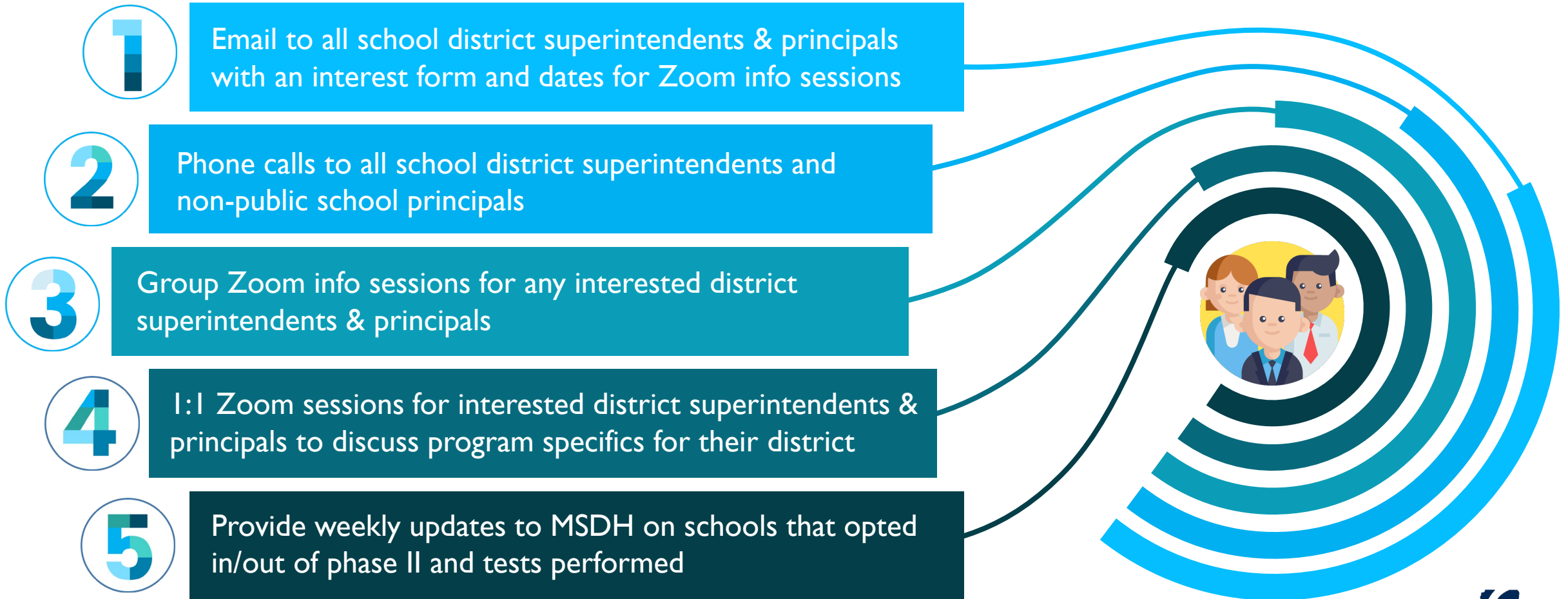


MISSISSIPPI STATE DEPARTMENT OF HEALTH

Statewide COVID-19 K-12 School Screening Testing — Overview Materials

Presented to:
Mississippi K-12 Schools

SCHOOL OUTREACH & COMMUNICATION



AGENDA

1. Program Overview
2. Program Goals
3. Testing Algorithm
4. Test Types
5. How We Help



6. Collaboration
7. Consent Forms
8. Testing Day
9. Result Reporting
10. How Schools Can Help

PROGRAM OVERVIEW

- Maverick Health has been selected by the **Mississippi State Department of Health** as the provider to implement voluntary COVID-19 testing programs in K-12 schools throughout the state
- All school districts and schools may participate in our testing program at no cost to them
- Parents must provide consent for children to participate

PROGRAM GOALS

1

To Help

**Slow the spread
of COVID19 in
schools and
maintain in-
person education**

2

To Keep

**Students
participating in
extracurricular
activities**

3

To Alleviate

**The COVID19
burden from
schools &
administrators**

TESTING ALGORITHM

- MSDH's testing program follows CDC guidance and is designed for **asymptomatic** and **unvaccinated** teachers, employees & students



If participating, school districts and schools will need to provide estimates of teachers, employees & students that will be tested each week.

Some examples of testing strategies include:

1

Weekly screening of **all** asymptomatic & unvaccinated teachers, employees & students

2

Weekly screening of all asymptomatic & unvaccinated students (and teachers/coaches) participating in **school sponsored extracurricular activities** of any type, including sports

TEST TYPES

**INDIVIDUALS WILL INITIALLY RECEIVE A RAPID ANTIGEN TEST
AND POSITIVE SAMPLES WILL ALSO RECEIVE A PCR TEST**

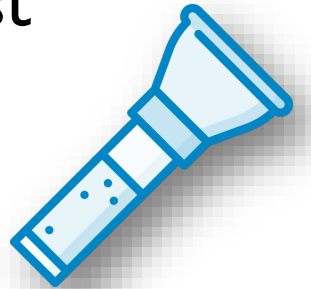
Antigen

- Rapid test with results in **15 minutes**¹
- Anterior nares swab (lower nasal)



PCR

- Performed if the rapid test is positive
- Results within **24-48 hours**
- Non-invasive saliva collection (only one drip of saliva required!)²



¹ PCR testing will be performed on all rapid positives

² Also available with an anterior nares swab (lower nasal)

HOW WE HELP

- Maverick Health will help oversee every aspect of your testing program and provide the following support:

Dedicated Account Specialist assigned specifically to your district/school

Collaboratively establish a testing algorithm & schedule specific to each district/school

Assist in gathering **consent forms** from parents/guardians

Testing staff to perform **weekly sample collection**

Reporting of results to MSDH in compliance with **CDC and MSDH guidelines**

COLLABORATION

- Work closely to **customize a testing algorithm** (i.e., all asymptomatic/unvaccinated school members or just those participating in extracurriculars)
- Work together to **create a testing schedule** that is the least disruptive and most helpful for your school community
- Work collaboratively to assign a **primary POC from both our organization and yours** to ensure a seamless communication and an effective and efficient program



CONSENT FORMS

- Maverick Health can assist districts/schools with collecting consent forms
- Multiple languages if needed
- Variety of options:



Can email parents/
guardians a consent form
for them to sign



Can provide paper copies for
students to bring home to
parents/guardians to sign and
bring back to school



TESTING DAY

- A trained and friendly Maverick Health team will support the staffing needs for testing events at your school
- Working with your school's dedicated point of contact/liaison, the Maverick Health team will set up a dedicated testing location on school grounds to perform sample collection



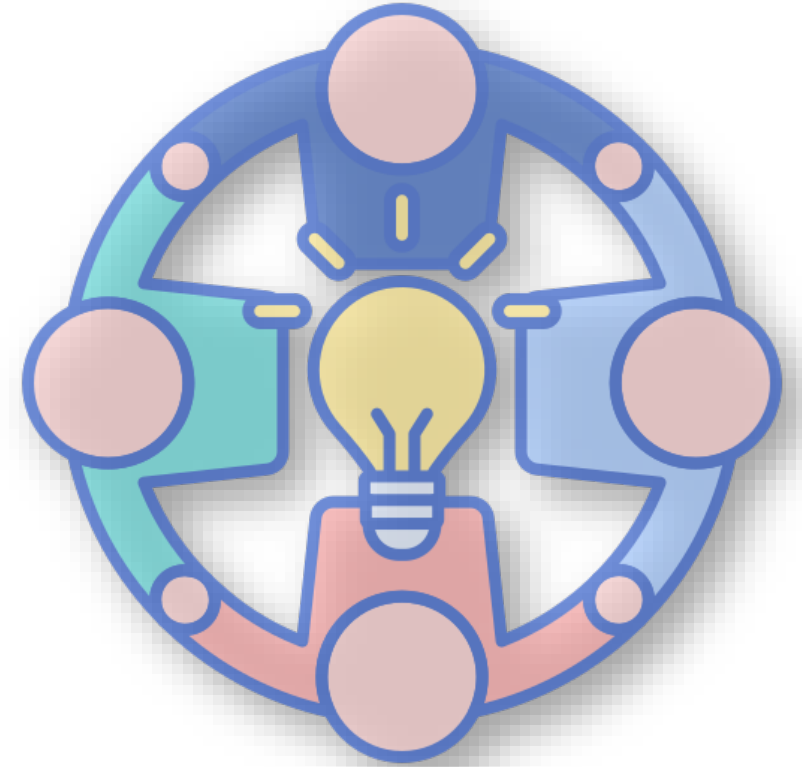
RESULT REPORTING

- Maverick Health handles all lab **and** aggregate reporting requirements outlined by CDC and MSDH
- Fully HIPAA compliant and secure, trusted by state health departments nationally



HOW SCHOOLS CAN HELP

- Fill out [THIS](#) form so we can help put together your testing program!
- **Collaborate** with Maverick Health to establish a **testing algorithm & schedule** that works best for your district/school
- Appoint a **dedicated “Program Administrator”** to serve as Maverick Health’s main POC at your district/school





Questions?

Contact:

MSK12@MAV.HEALTH

Or

COVIDSchoolReporting@MSDH.MS.GOV