



**SMJUHSD**

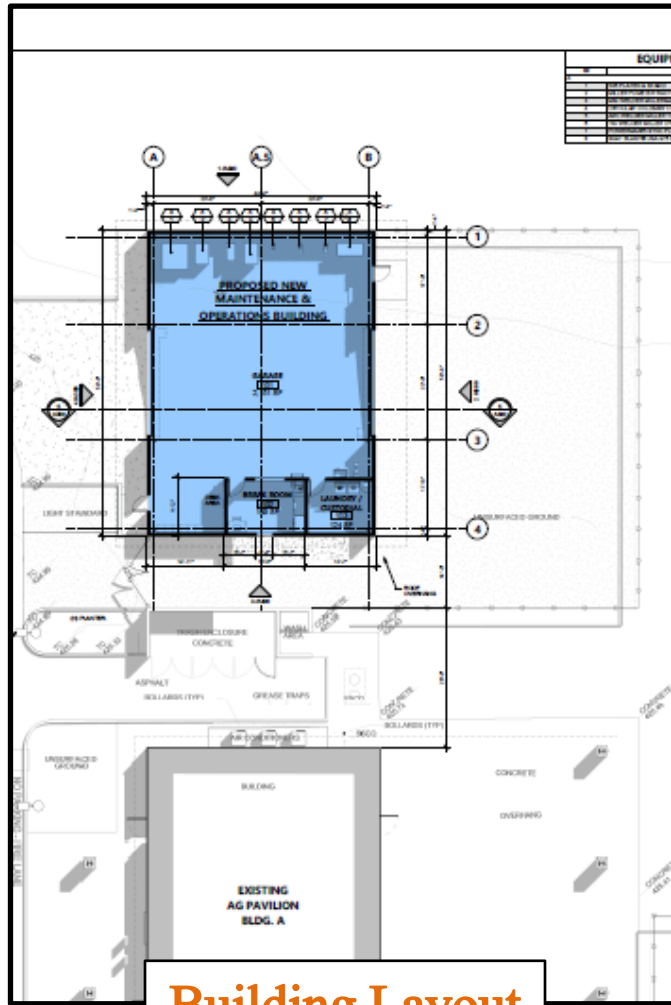
# **Facilities Projects**

# **2024**

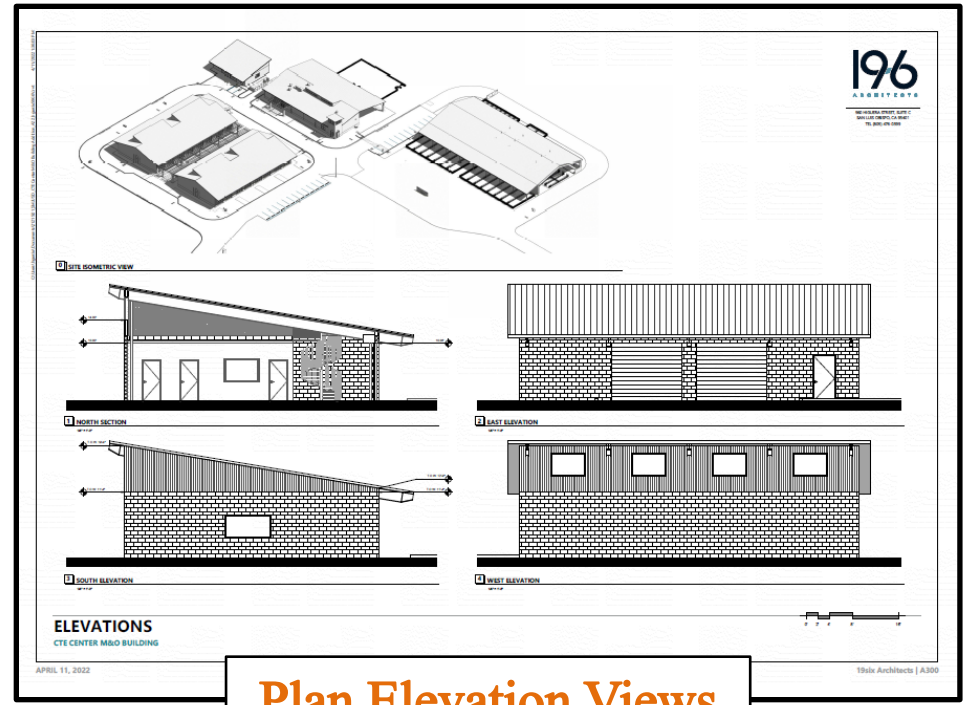
MARK RICHARDSON  
**CLECAF**  
CAREER TECHNICAL EDUCATION CENTER & AGRICULTURAL FARM



# New Maintenance & Operations Building



**Building Layout**



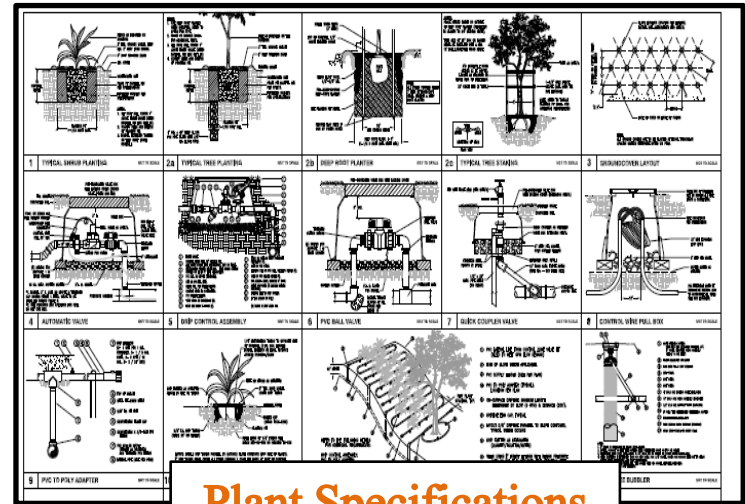
**Plan Elevation Views**



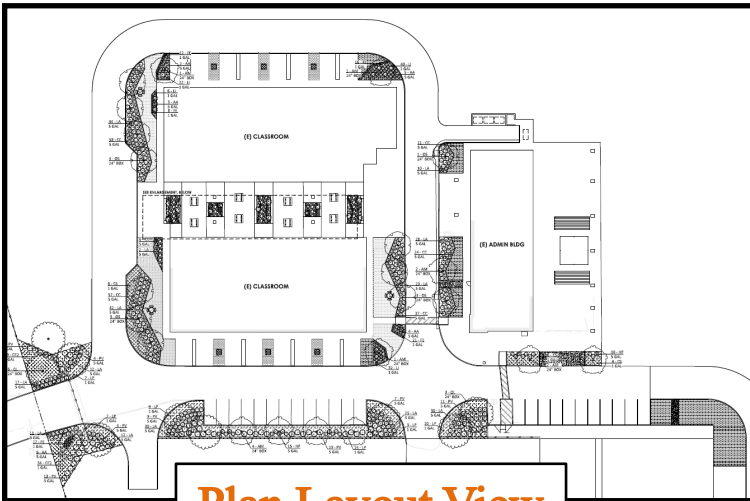
# New Landscaping



**Preinstallation North View**



**Plant Specifications**



**Plan Layout View**



**Preinstallation East View**

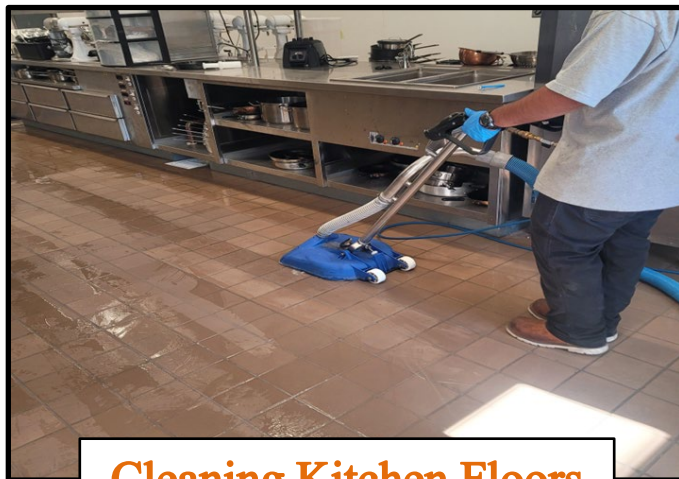
# Summer Cleaning & Repairs



**Cleaning Kitchen Floors**



**Installed Produce Washer**



**Cleaning Kitchen Floors**

# Ernest Righetti



# CTE Modernization



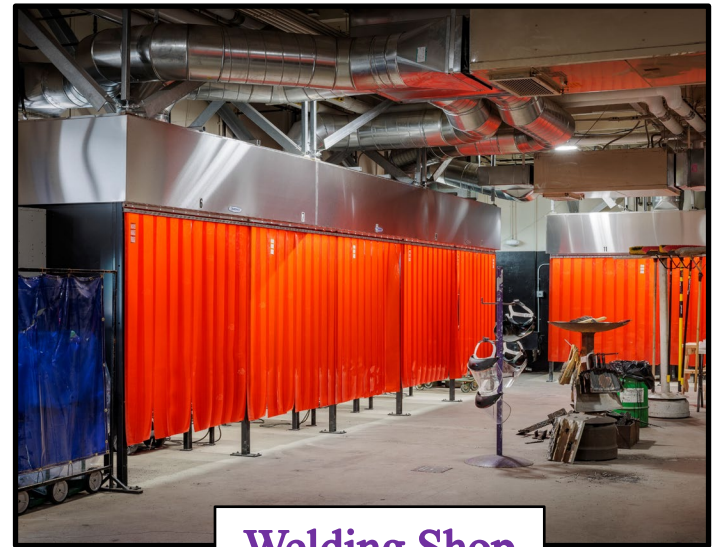
Wood Shop



Welding Booths Electrical



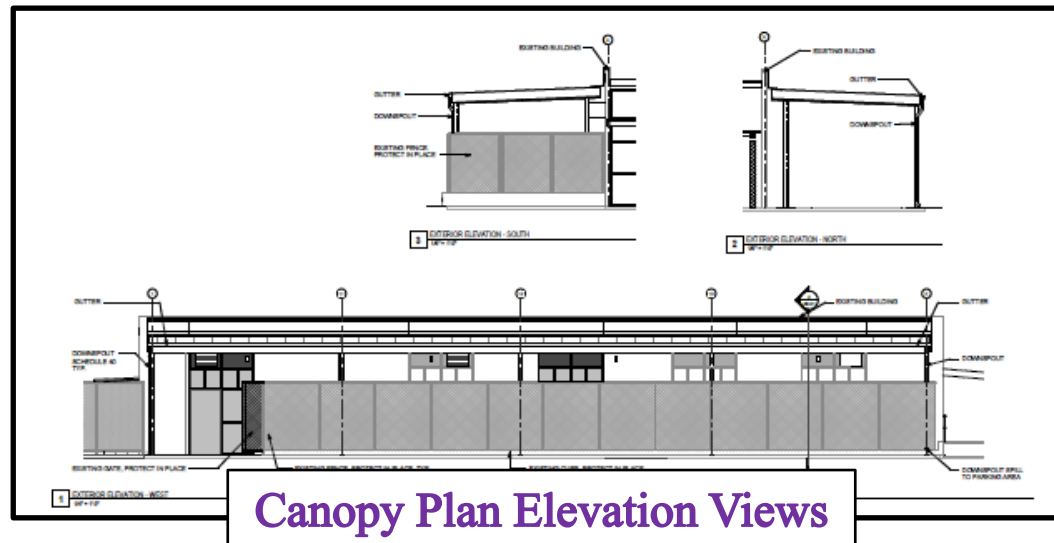
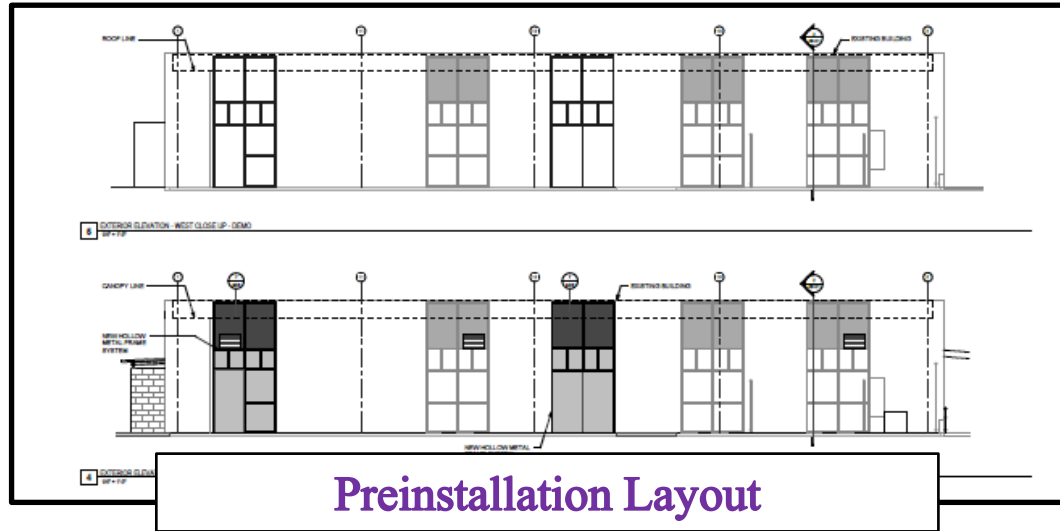
Heavy Equipment Move-In



Welding Shop



# CTE Welding Canopy Replacement

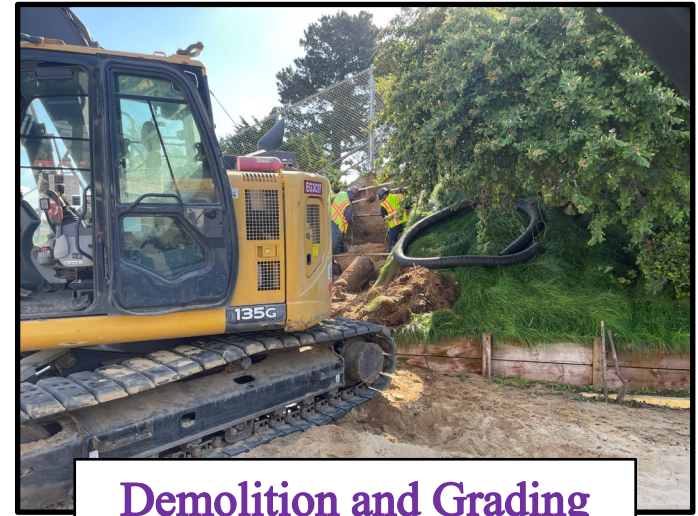




# Hillside Stormwater Erosion Repair



Erosion Damage



Demolition and Grading



Completed Repair



# Campus Re-Keying



Locksmith Training  
& Core Pinning



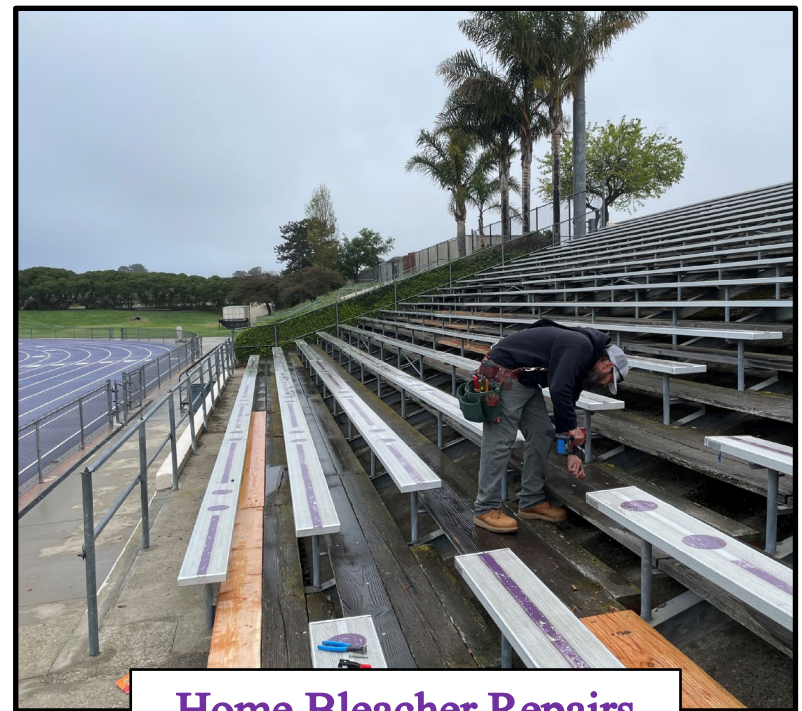
Cyber-Key Replacement



# Summer Cleaning & Repairs



Hard Floor Cleaning



Home Bleacher Repairs



# Grounds Projects & Improvements



Re-Painting Curbs



Water Line Repair



Sidewalk Repairs



Parking Lot Restriping



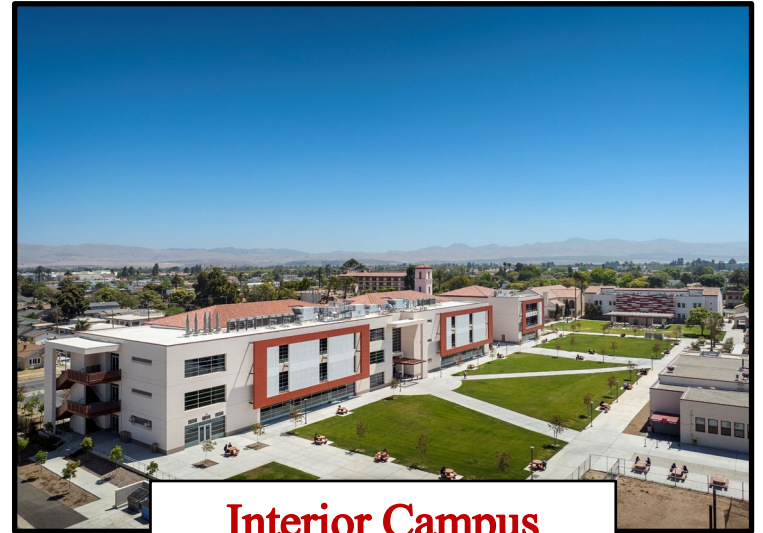
# Santa Maria



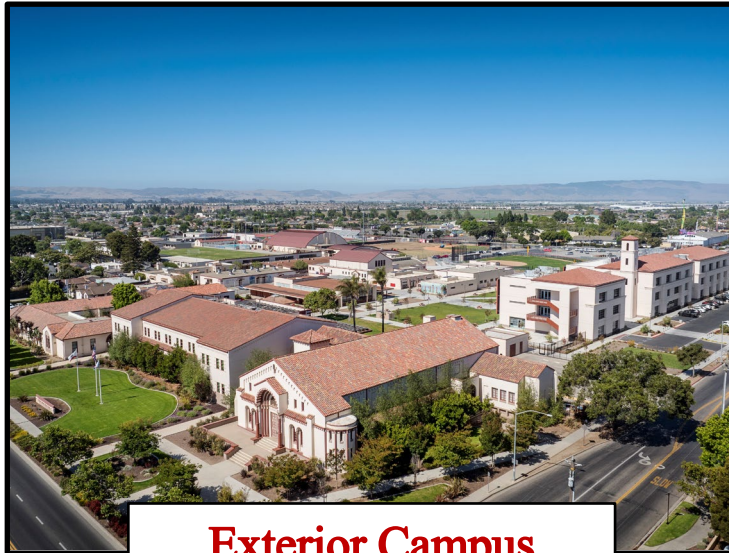
# New 50 Classroom Building



**Classroom View**



**Interior Campus**



**Exterior Campus**



**Administration Lobby**



# New Softball Field



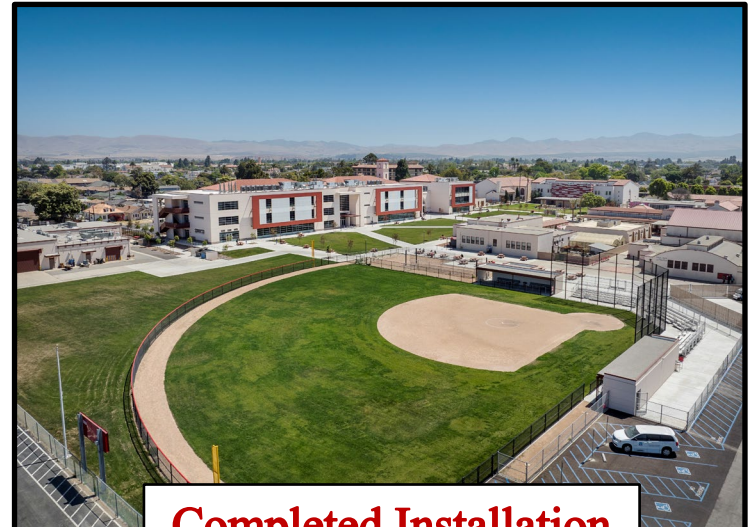
**Start of Construction**



**Excavation and Grading**



**Field Inspection**



**Completed Installation**



# CTE Modernization



**Ag Welding**



**Ag Mechanics**



**Auto Shop**



**Exterior Roll-up Doors**





# Morrison Street Concrete & Landscaping



**Preconstruction**



**Concrete Finish**



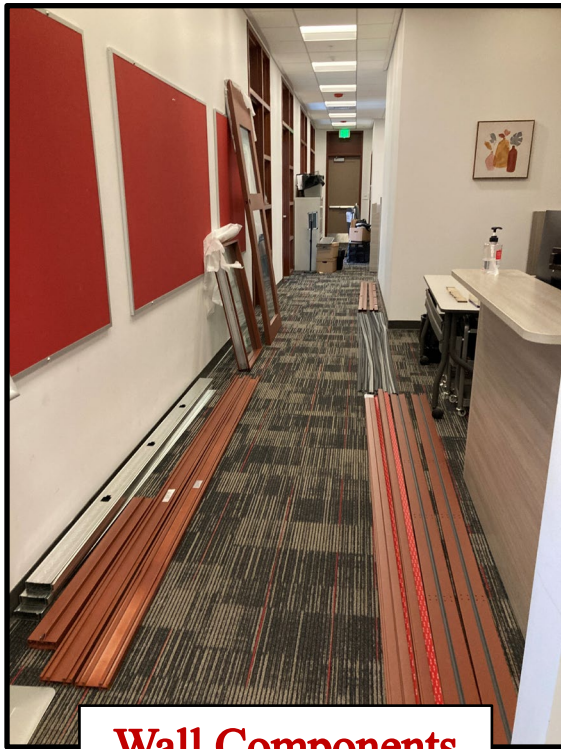
**Landscaping Installation**



**Completed Installation**



# Administration Office Enclosure Installation



**Wall Components**



**Wall Assembly**



**Completed Installation**



# Building 820 & 830 Flooring Replacement



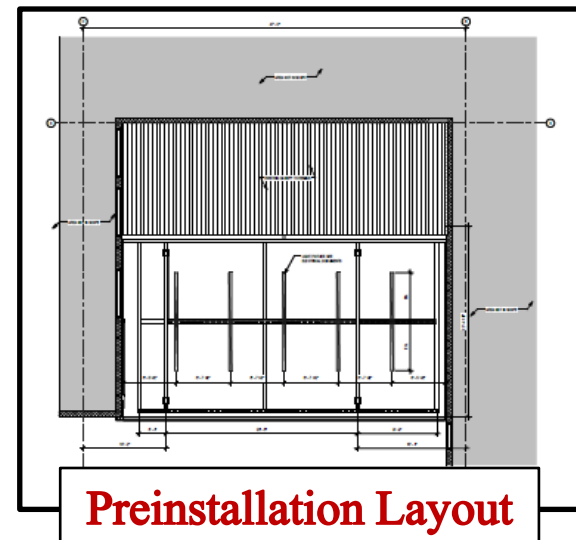
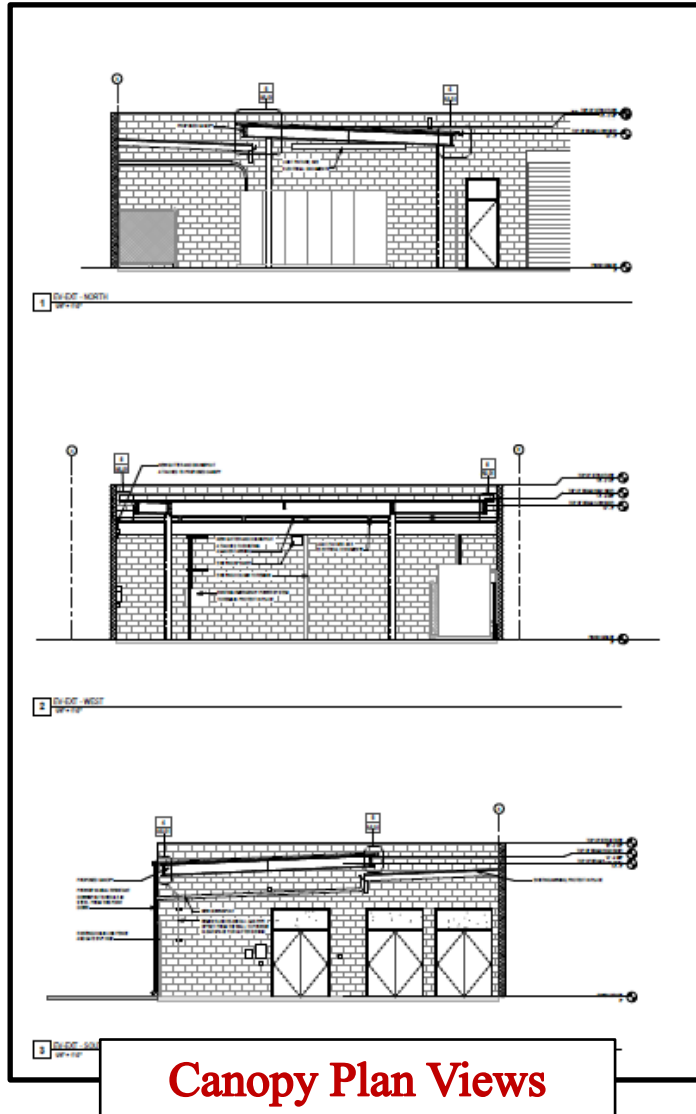
**Classroom Carpet**



**Entry Vinyl Flooring**



# CTE Welding Canopy Replacement



# Baseball Field Renovations



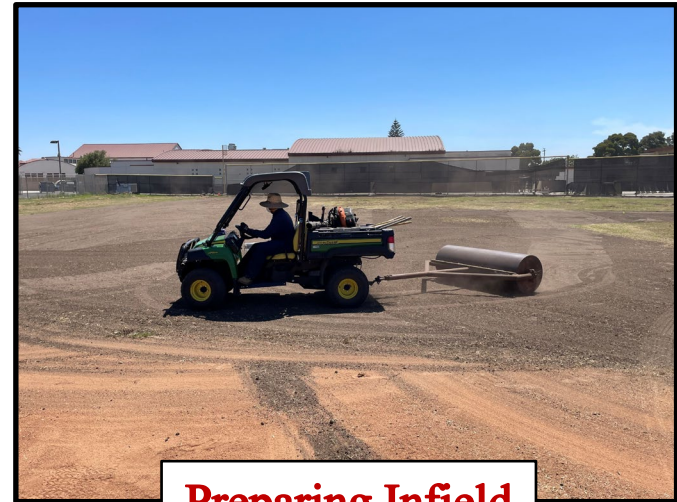
**Home Plate Compaction**



**Fill Dirt for Leveling Outfield**



**Leveling Outfield**



**Preparing Infield**



# Summer Cleaning and Repairs



**Flooring Replacement**



**Exterior Window Washing**



**Siding Replacement**



**Installing Concrete Pad**



# Grounds Projects and Improvements



**Grooming the Turf**



**Irrigation Replacement**



**Pressure Washing the Campus**



**50-Classroom Landscaping**



# Pioneer Valley





# Various Flooring Replacements



**Stairwell Vinyl Replacement**



**Classroom Carpet Demolition**



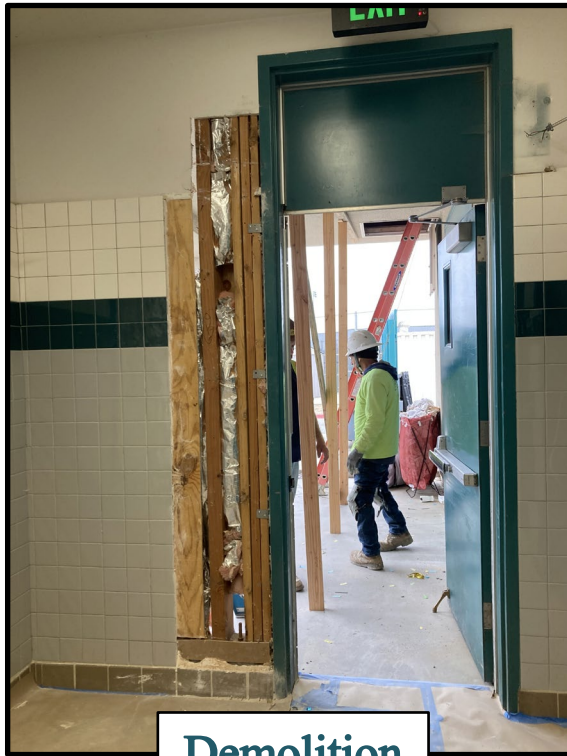
**New Entry and Hallway Flooring**



**Offices Carpeting**



# Kitchen Access Enlargement



Demolition



Installation



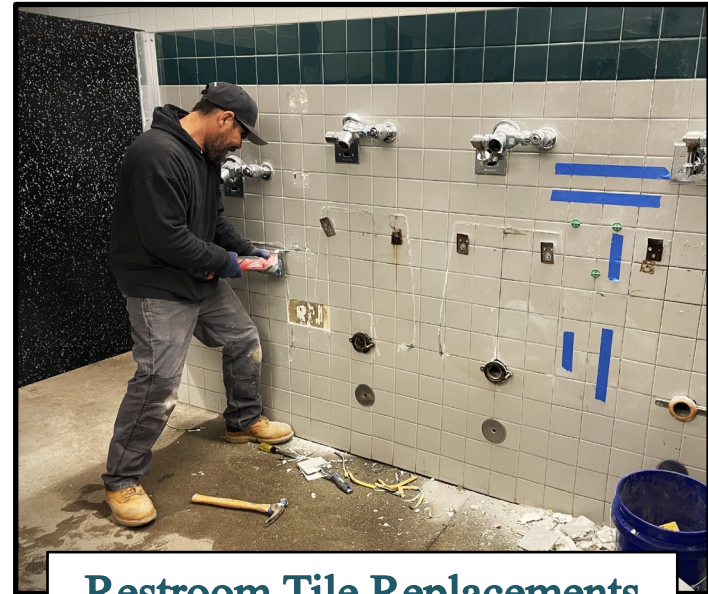
Completed Installation



# Summer Cleaning & Repairs



**HVAC Repairs**



**Restroom Tile Replacements**



# Grounds Projects and Improvements



Replacing an Irrigation Valve



Baseball Field Improvements



# Delta



# Summer Cleaning & Repairs



**Washer / Dryer  
Installation**



**Campus Re-Keying**



# Grounds Projects and Improvements



**New Landscape North View**



**New Landscape East View**



**New Landscape South View**

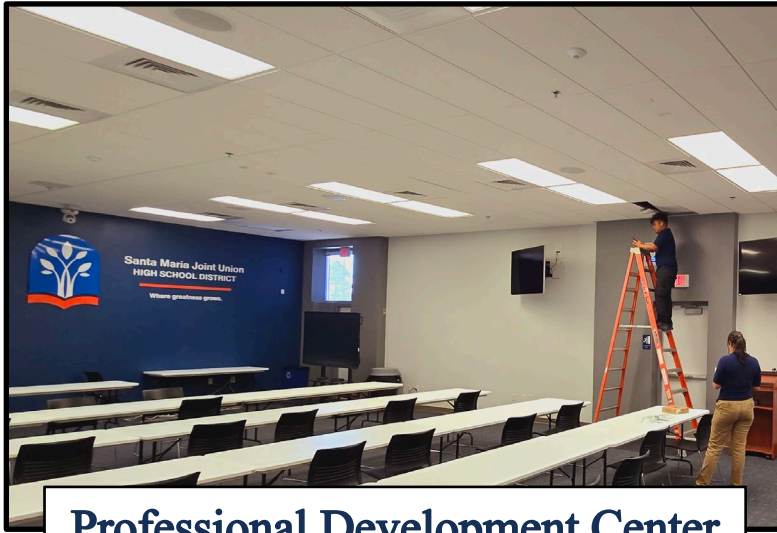


# Support Services Center & District Wide Projects





# District-Wide Access Points Replacement



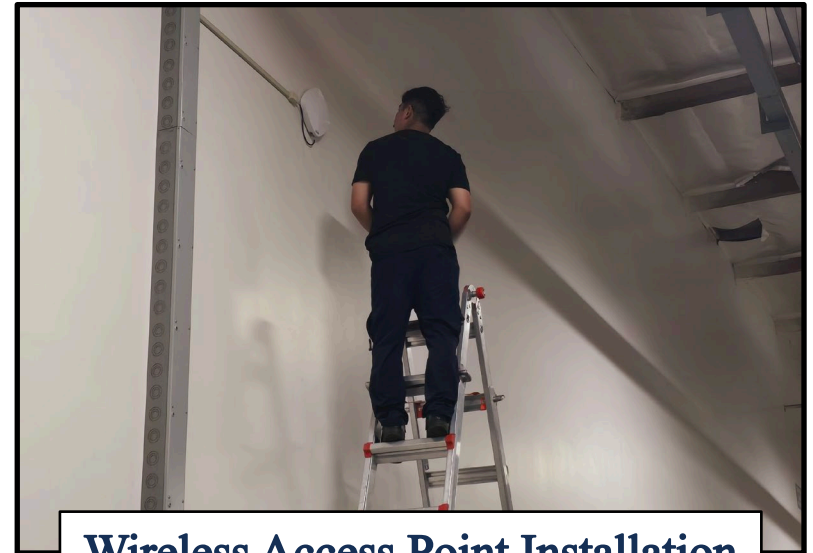
**Professional Development Center**



**Wireless Access Point**



**C1 Installation Team**



**Wireless Access Point Installation**



# District-Wide Edge Switches Replacement



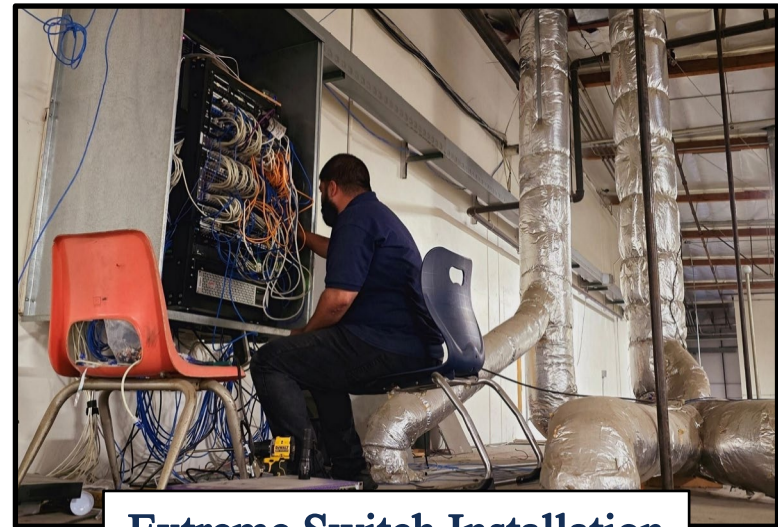
**Equipment Cue**



**Preparing for Installation**



**Extreme Switch Installation**



**Extreme Switch Installation**



# PVHS & SMHS 7 Portable's Re-Roofing



**PVHS 635 Roof Replacement**



**SMHS 901 Roof Replacement**



**PVHS 611 Roof Replacement**



# SSC M.O.T. & Facilities Office's Flooring Replacement



**M.O.T. Office's**



**Transportation Break Room**



**Facilities Office's**



# SSC Grounds Projects and Improvements



**Replanting Bioswale**



**Completed Planter**



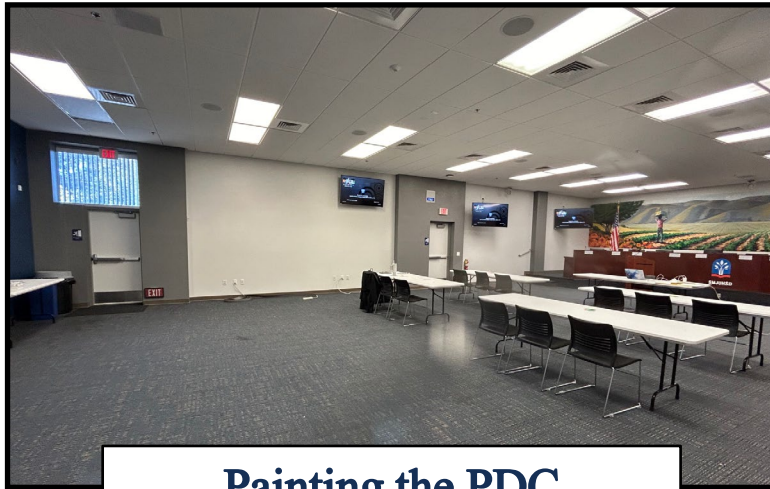
# SSC Maintenance Projects



**Re-Striping the Parking Lot**



**Re-Striping the Parking Lot**



**Painting the PDC**



# Transportation Summer Projects



**Washed and Waxed Busses Between Summer School Routes & Trips**



QUESTIONS?



**Santa Maria Joint Union**  
HIGH SCHOOL DISTRICT

