

ADDENDUM NUMBER TWO

Vallecitos Elementary School, New Relocatable 40x48 Classroom

San Diego County Office of Education
County of San Diego, California

July 2, 2025

Architect's Project Number: VEVES05

General: All project documents including contract documents, drawings and specifications shall remain unchanged, except for those elements added, revised, deleted, or clarified by this Addendum. In case of conflict between Drawings, Project Manual, and this Addendum, this Addendum shall govern. Acknowledge receipt of Addenda Number One and Number Two in the appropriate spot on the Bid Form.

ITEM NO. 1 ELECTRICAL: REVISIONS AND REPLACEMENT DRAWINGS

1. It appears that in Addendum No.1, Electrical Drawing Sheet ES-1.2 was inadvertently left off (not included). Please see attached Drawing Sheet ES-1.2, hereby made part of the Drawings and of the Contract for Construction.

ITEM NO. 2 REVISION TO ASPHALT ACCESS AT FRONT OF NEW RELOCATABLE

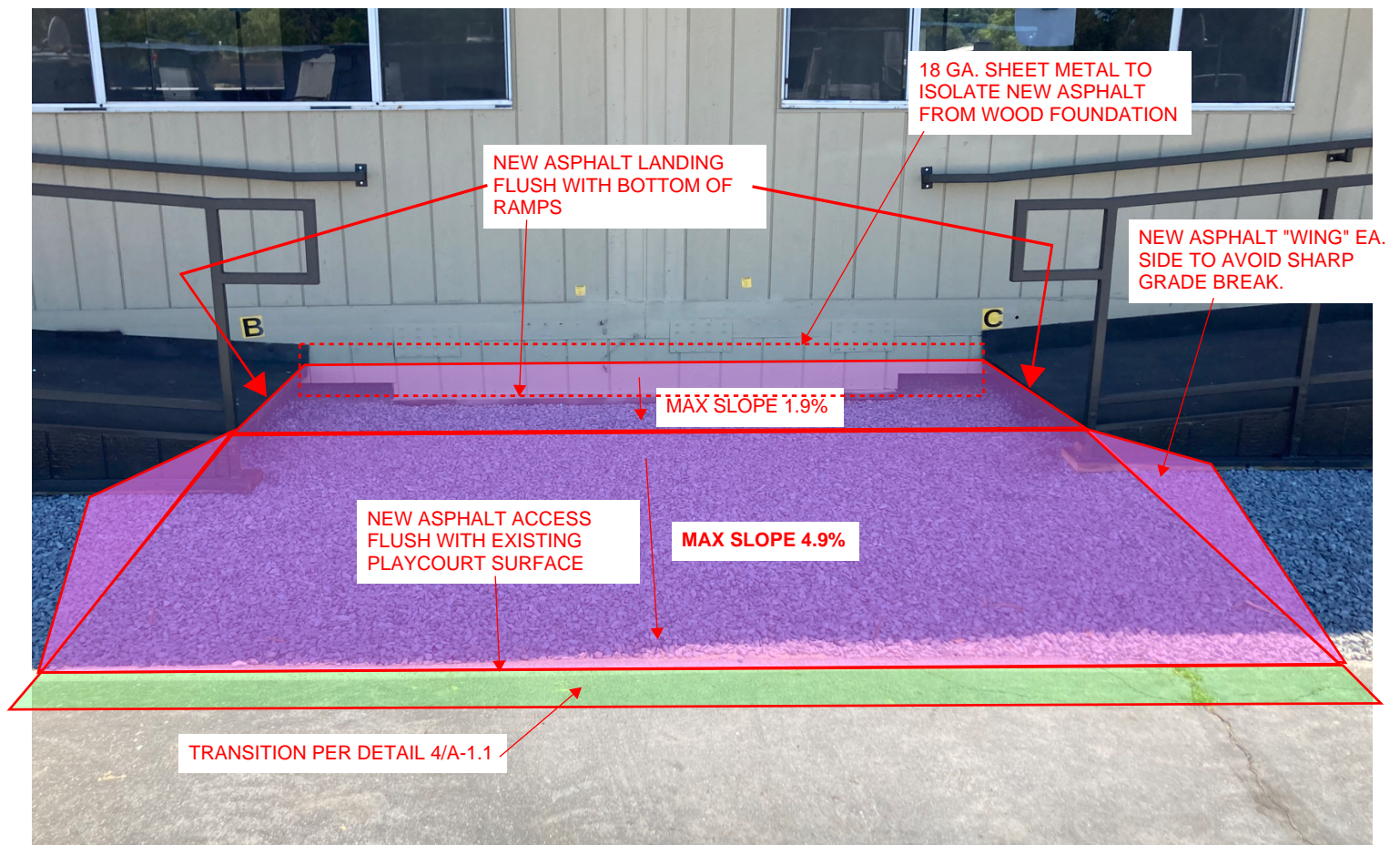
1. Due to found conditions, the building was set at an elevation that does not require a "Ramp" as defined by ADA codes. Provide an asphalt access in accordance with Sheet A-1.1, with the following changes. Please see attached noted photo
 - a. The slope on the access MUST be less than 5% - we specify 4.9% to avoid variations in workmanship and materials.
 - b. With a slope on the access of less than 5%, no handrails are required and the handrails as installed on the existing ramps to the doors can remain as is. If the slope exceeds 5%, then handrails must be installed per the original drawings. We believe the slope can now be installed at less than 5%. Please verify asap.

END OF ADDENDUM NUMBER TWO

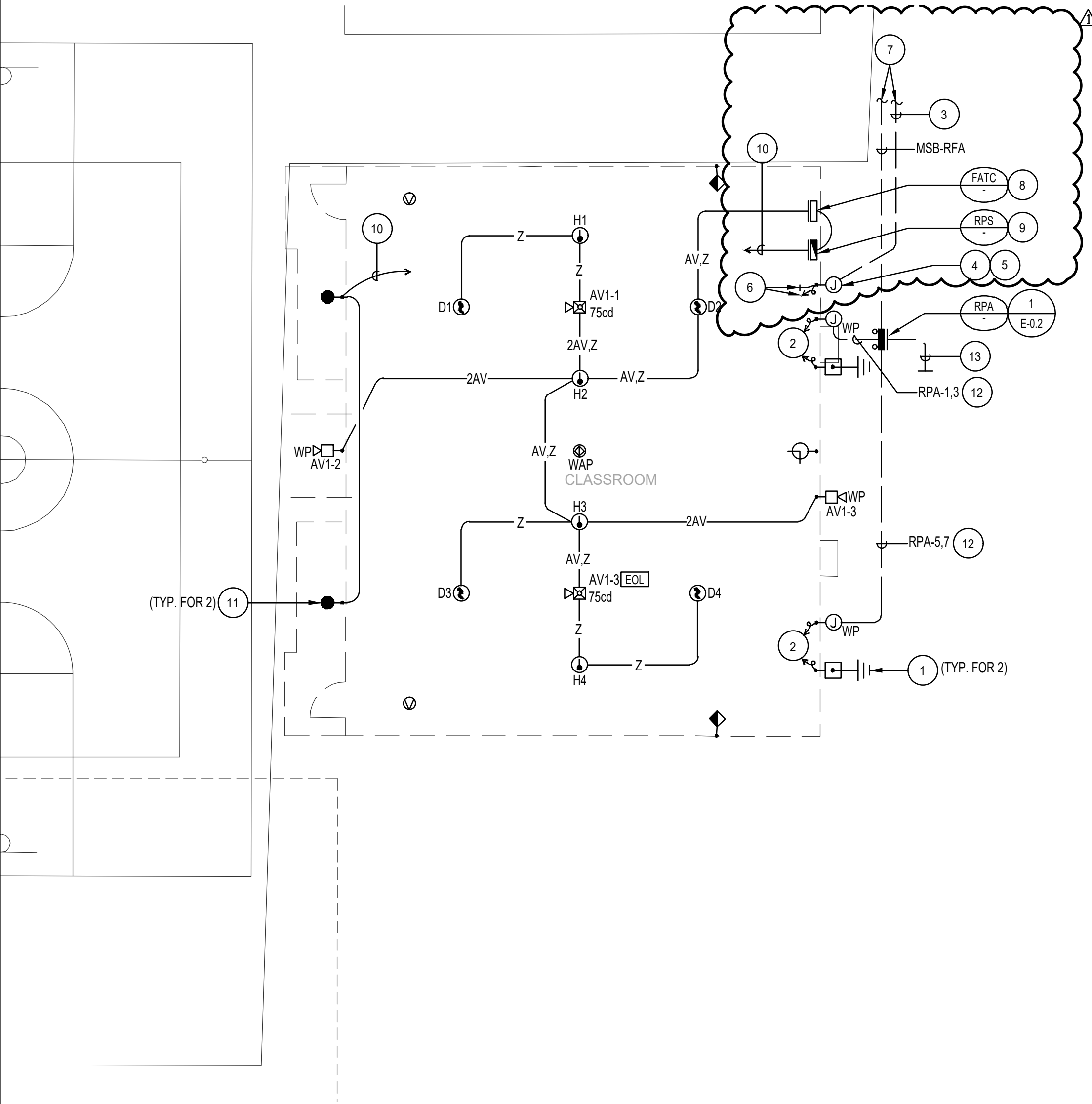
Attachments as follows: as listed in Item No. 1 and 2



Fred Gualda AIA, C20789
Principal
MGPA ARCHITECTURE



Vallecitos 40x48 Relocatable Classroom
Addendum #2
Attachment to Item #2
7/2/2025



ENLARGED SITE ELECTRICAL PLAN

SCALE
1/8"=1'-0"

1

PLAN NOTES:

- 1 PROVIDE BUILDING GROUNDING SYSTEM. SEE DETAIL "4" ON SHEET E0.2 FOR ADDITIONAL INFORMATION.
- 2 CONNECT INCOMING POWER CONDUIT AND CONDUCTORS TO PANELBOARD PROVIDED WITH PORTABLE BUILDING.
- 3 PROVIDE THE FOLLOWING SIGNAL SYSTEMS CONDUITS WITH SPECIFIED CONDUCTORS:
2" C. DATA/VOICE NETWORK
1" C. FIRE ALARM
1" C. INTRUSION DETECTION
1" C. SPARE
- 4 PROVIDE A 12" X 12" X 6" D. WALL MOUNTED WEATHERPROOF PULLBOX FOR THE DATA/VOICE NETWORK SYSTEM. EXTEND 2" C. FROM PULLBOX AND ROUTE EXPOSED ON EXTERIOR WALL OF PORTABLE BUILDING TO AN ELEVATION ABOVE THE ACCESSIBLE CEILING INSIDE BUILDING. PROVIDE WEATHERPROOF LB FITTING AND PENETRATION THROUGH EXTERIOR WALL AND STUB 2" C. INTO CEILING SPACE. UTILIZE CEILING SPACE FOR ROUTING NEW FIBER OPTIC CABLING EXPOSED AS INDICATED. PROVIDE SEAL FOR WALL PENETRATION.
- 5 PROVIDE A 12" X 12" X 6" D. WALL MOUNTED WEATHERPROOF PULLBOX FOR THE FIRE ALARM AND INTRUSION DETECTION SYSTEMS. EXTEND TWO (2) 1" C. FROM PULLBOX AND ROUTE EXPOSED ON EXTERIOR WALL OF PORTABLE BUILDING TO AN ELEVATION ABOVE THE ACCESSIBLE CEILING INSIDE BUILDING. PROVIDE WEATHERPROOF LB FITTINGS AND PENETRATIONS THROUGH EXTERIOR WALL AND STUB ONE (1) 1" C. INTO CEILING SPACE. FIRE ALARM SYSTEM CONDUCTORS SHALL BE INSTALLED IN CONDUIT AS INDICATED. UTILIZE CEILING SPACE FOR ROUTING NEW CABLING EXPOSED AS INDICATED. PROVIDE SEALS FOR WALL PENETRATIONS.
- 6 EXTEND NEW CONDUCTORS FOR DATA/VOICE NETWORK AND INTRUSION DETECTION SYSTEMS EXPOSED THROUGH CEILING SPACE AND TERMINATE AT RESPECTIVE EQUIPMENT, DEVICE AND/OR OUTLET CONNECTORS AS INDICATED. FIRE ALARM SYSTEM CONDUCTORS SHALL BE INSTALLED IN CONDUIT AS INDICATED.
- 7 SEE SHEET ES-1.1 FOR CONTINUATION.
- 8 PROVIDE 12" X 12" X 6" D. SURFACE MOUNTED TERMINAL CABINET FOR FIRE ALARM SYSTEM AT +45" AFF.
- 9 PROVIDE FIRE ALARM SYSTEM NOTIFICATION CIRCUIT EXPANDER PANEL AT +45" AFF.
- 10 PROVIDE 2 # 12, 1 # 12 GRD - 3/4" C. AND EXTEND TO PORTABLE BUILDING PANELBOARD FOR AVAILABLE SPARE 120 VOLT CIRCUIT. PROVIDE NEW 20A/1P CIRCUIT BREAKER WITH REQUIRED MOUNTING HARDWARE IN SPACE OF PANELBOARD TO SERVE NEW EQUIPMENT AS INDICATED. NEW CIRCUIT BREAKER A.I.C. RATING SHALL MEET OR EXCEED RATING OF EXISTING CIRCUIT BREAKERS CURRENTLY USED.
- 11 PROVIDE LED WALL PACK LIGHT FIXTURE WITH ALUMINUM HOUSING, IMPACT RESISTANT TEMPERED GLASS LENS, PHOTOCELL, HIGHLY EFFICIENT LED DRIVER, AND EMERGENCY BATTERY BACKUP SYSTEM FOR MINIMUM 90 MINUTES OF OPERATION. LITHONIA # TWHLED-20C-40K- T3M-120-PE-ELSW OR APPROVED EQUAL.
- 12 PROVIDE 3 # 1, 1 # 8 GRD - 1 1/2" C.
- 13 PROVIDE FOUR (4) 1 1/2" C.O. STUBBED AND CAPPED BELOW GRADE FOR FUTURE USE.

DSA Stamp

Issue Date:

DSA

Revisions:

ADD #1

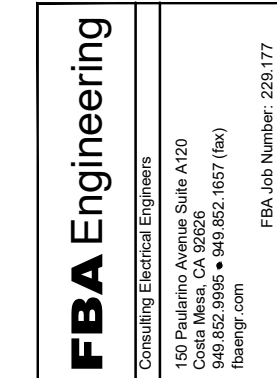
2

3

Consultant Stamp:



Consultant:



VSVE06 40x48 RELO CR

VALLECITOS ELEMENTARY
PORTABLE BUILDING

for
VALLECITOS UNIFIED SCHOOL DISTRICT
FALLBROOK CALIFORNIA

Job N°.: VSVE06



MGPA ARCHITECTURE
An Architectural Corporation
Mailing: 6965 El Camino Real, Suites 105-278
Carlsbad, CA 92009
Tele: (760) 929-1500 Fax: (760) 929-1506



Sheet Title:

ENLARGED SITE
ELECTRICAL PLAN

Sheet Number:

ES-1.2