



Riverview Gardens
SCHOOL DISTRICT

COVID-19 Parent Information & Procedures for SY 2022-2023

Revised August 19, 2022

A NEW VIEW ON THE HORIZON

DAILY HEALTH CHECKS

- ***Please do DAILY health checks on your students to ensure that each student is free of COVID-19 symptoms BEFORE sending them to school.***

SYMPTOMS REQUIRING ABSENCE

- ***Students MUST remain home if they exhibit any symptoms of COVID:***
 - ***COVID-19 Symptoms include:*** fever, cough, shortness of breath, chills, body aches, sore throat, headache, congestion, runny nose, nausea/vomiting, new loss of taste of or smell, and/or diarrhea.
 - For additional information, please visit:
<https://www.cdc.gov/coronavirus/2019-ncov/symptoms-testing/symptoms.html>
- Fever of 100.4 degrees or higher
 - Students can return to school after being fever free for 24 hours ***without*** fever reducing medication

MASK/FACE COVERING

- Will be optional but ***strongly recommended***
- RGSD's Board of Education reserves the right to revise mask requirements based on St. Louis County's COVID Community Level and recommendations.

OTHER MITIGATING PROTOCOLS

- Hand sanitizer will be available.
- Social distancing will be encouraged (as much as possible in a school setting).
- School buildings will regularly be fogged with disinfectant outside of school hours.

REPORTING ILLNESS TO SCHOOLS

- When reporting illness absences, be sure to report if your child:
 - Tested positive for COVID.
 - Has signs of COVID-19.
 - Was a close contact of someone who tested positive for COVID-19.
 - Has been diagnosed with influenza (respiratory flu).

STUDENTS WHO HAVE TESTED POSITIVE FOR COVID

- Must remain home for 5 days of quarantine.
- All students living at the same address as a positive case will be required to quarantine if they are demonstrating symptoms.
- ***All students who are quarantined will be able to access learning via Google Classroom***

RETURNING TO SCHOOL AFTER A POSITIVE COVID DIAGNOSIS

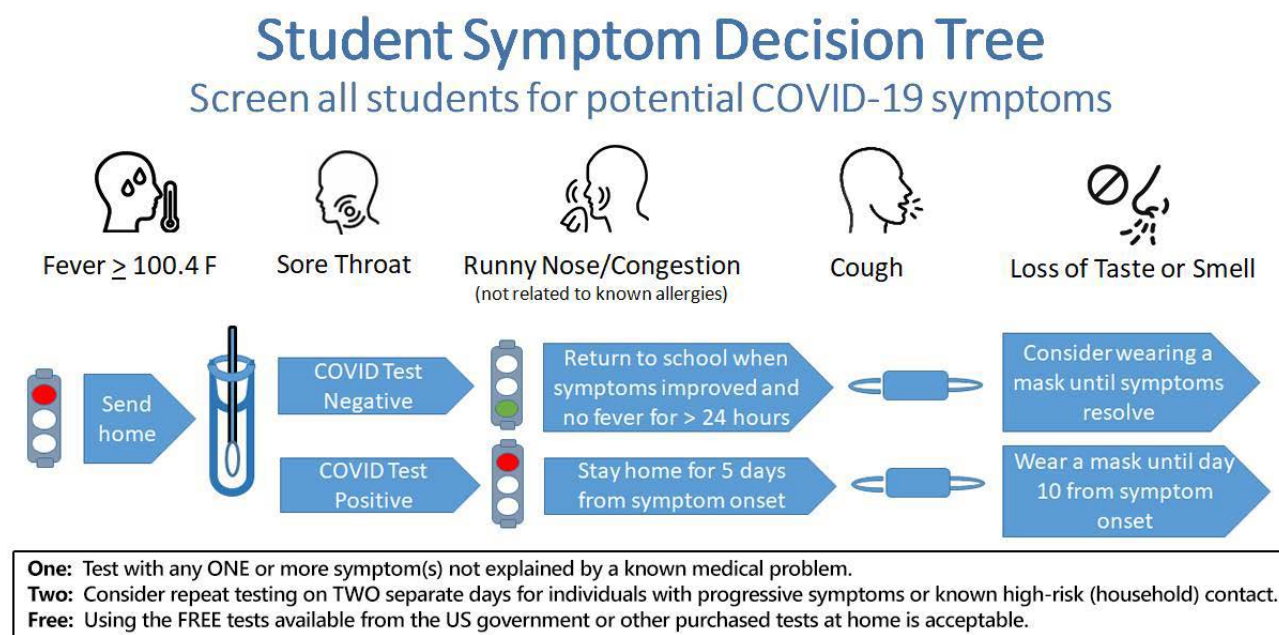
- Students will be required to wear a mask/face covering for 5 days after returning to school.

STUDENTS SUSPECTED OF COVID AT SCHOOL

- When a student exhibits symptoms of COVID-19 while at school:
 - Parents will be contacted to pick up students.
 - Parents will be required to pick up their student within 1 hour after being notified.
 - All students living within the same address will be assessed by the school nurse. If demonstrating symptoms, these students will be required to quarantine for 5 days and wear mask/face covering for 5 days after returning from quarantine.
- It is recommended that a student suspected of COVID be tested.

CLOSE CONTACTS

- Close contacts of a positive or suspected case of COVID, will **NOT** be sent home to quarantine
- Close contacts will only be placed in quarantine **IF** they are displaying COVID-19 symptoms.
- If displaying symptoms, close contact will be required to quarantine for 5 days and must wear a mask/face covering for 5 days after returning from quarantine



Source: Washington University and St. Louis Children's Hospital - Revised August 2022

CLASSROOMS GUIDANCE:

PRE-K-5th CLASSROOMS

Teachers can:

- Provide assigned seating for students and maximize social distancing within classroom spaces to the extent possible.
- Take precautionary sanitation measures when utilizing small group instructional spaces (e.g. guided reading table, classroom library).
- Schedule/coordinate restroom and handwashing breaks throughout the day.
- Schedule/coordinate recess to minimize mixing student groups.
- Refrain from sharing school supplies between students.

MIDDLE & HIGH SCHOOL CLASSROOMS

Grades 6–8 Classrooms

Teachers can:

- Maximize social distancing within classroom spaces.
- Provide assigned seating for students.
- Encourage hand washing throughout the day.
- Refrain from sharing school supplies between students or staff.

Grades 9–12 Classrooms

Teachers can:

- Maximize social distancing within classroom spaces. Teachers can provide assigned seating for students.
- Encourage hand washing throughout the day.
- Refrain from sharing school supplies between students or staff.

GUIDANCE FOR COMMON AREAS

Cafeteria

- Maintain 6ft physical distance - when possible.
- Follow the meal procedure.
- Clean eating spaces between uses.

Restrooms

- Maintain 6ft of physical distancing when possible.
- Display clearly visible signage reminding everyone of physical distancing and handwashing.
- Schedule/coordinate restroom and handwashing breaks when possible.

HALLWAYS, MAIN OFFICE AND OTHER COMMON AREAS

- Maintain 6ft of physical distancing when possible.
- Clearly mark areas to indicate safe distancing for students.
- Display signage reminding everyone of physical distancing in entryways, hallways, classrooms, and common areas.

VISITORS

- If you are exhibiting any symptom related to COVID-19, please **DO NOT** attempt to access ANY RGSD building.
- Visitors must remain in the main office when visiting schools.
- If the visitor is dropping off an item for a student, the item will be left in the office for delivery/pickup by the student.
- If the visitor is picking up a student for any reason, the student will be sent/brought to the main office.

TRANSPORTATION (School Bus & Other District Transportation):

Any driver exhibiting COVID-19 symptoms or with a fever of greater than 100.4 will be asked to return home. A substitute driver will be secured for the route. All buses will have hand sanitizer for use. Buses will be supplied with face coverings for students, if requested.