

# Beneficial Enrichment And Remediation (BEAR) Time



# General Information

- BEAR Time provides time during the school day for students to receive additional time and support for learning in ways that do not require them to miss new direct instruction.
- BEAR Time occurs weekly on Tuesdays from 9:35 to 10:20.
- Some weeks you will be required to attend sessions; some weeks you will be able to choose the sessions you attend.
- When choosing sessions, be sure to be intentional about your choices.
- Use Bear Time wisely! Make good choices!

# What does using Bear Time wisely mean?

## Make a plan!

Review the offerings!

## Struggling in a class?

Go to that content for help!

## Have an A in your classes?

Choose a content and dive deeper!

## Get to your sessions on time!


Bear Time is only once a week! Use your time wisely!





# How do you know where to go?

Content areas have rotating priority days. If you receive a priority pass from a teacher and it is their priority day, you **MUST** attend their BEAR Time session, or you will be referred to administration.





# **Students must sign up for Bear Time sessions each week!**

## **When do you sign up?**

During 1st Period each Monday

## **How do you sign up?**

Complete the Google Form linked in your Google Classrooms.

## **What happens if too many people sign up for one session?**

The first 28 students to sign up for a session will be allowed to attend the session. Everyone else will be called to the Media Center to choose another session to attend.



## Bear Time Sign Up for Students

Select the name of the teacher whose session you will attend on Tuesday for Bear Time.

If a teacher has given you a priority pass, you should select "Received a Pink Priority Pass." If you do not attend a priority session you received a pass to attend, discipline consequences will be put in place.

Teachers whose content areas are priorities for the day will not be listed.

trinidy.rawlins@hcbe.net [Switch account](#)



\* Indicates required question

Email \*

Record \_\_\_\_\_ as the email to be included with my response

Student First Name \*

Your answer \_\_\_\_\_

Student Last Name \*

Your answer \_\_\_\_\_

Student ID Number (Lunch) \*

Your answer \_\_\_\_\_

Tuesday- Teacher Name \*

Choose ▾

Received a Pink Priority Pass

NI/Absent

AP Study Hall

Davis, J

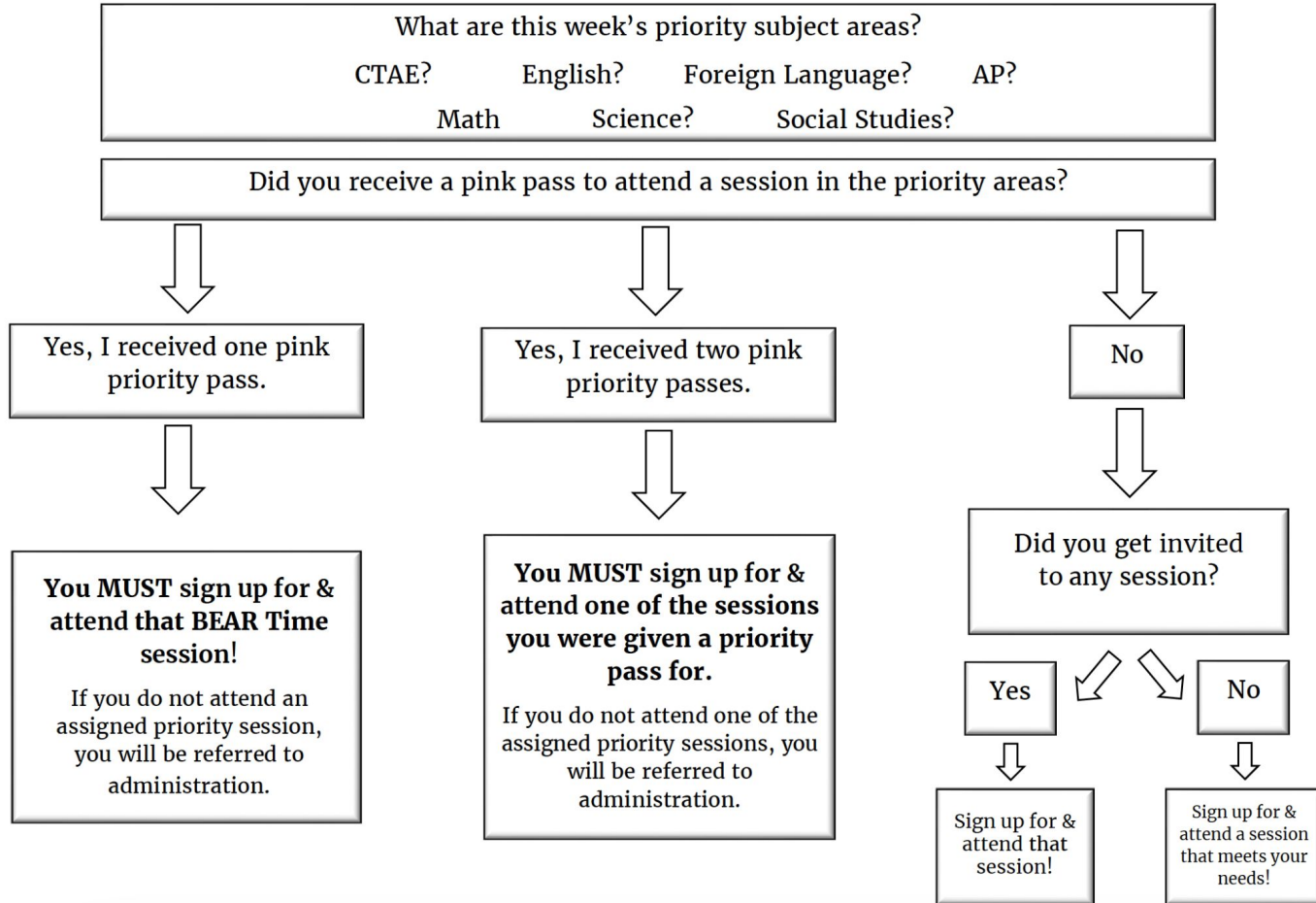
Smith, T

Taylor, B

Watkins, D

Wyatt

# BEAR Time Attendance



# BEAR Time Sessions



## When will you be able to see what sessions are offered?

Sessions will be posted online each Friday for the following week.



## Where do I find the online list of sessions?

A spreadsheet of all available sessions can be viewed at <https://hchs.hcbe.net/beartime>



## Can I use my phone to look up sessions?

You can scan the QR codes posted in the cafeteria during breakfast or lunch!



# What if you don't sign up for a session?

- Students who are in the hallway when the tardy bell rings, will be sent to the cafeteria for Bear Time to complete work in YouScience, IXL, or SAT/ACT prep.
  - This will not be a study hall for you to work!
- If this becomes a regular occurrence, your privilege of choosing a Bear Time session will be revoked, and administration/counselors will assign your sessions.
  - Skipping Bear Time = Skipping Class!

# BEAR Time QR Code

