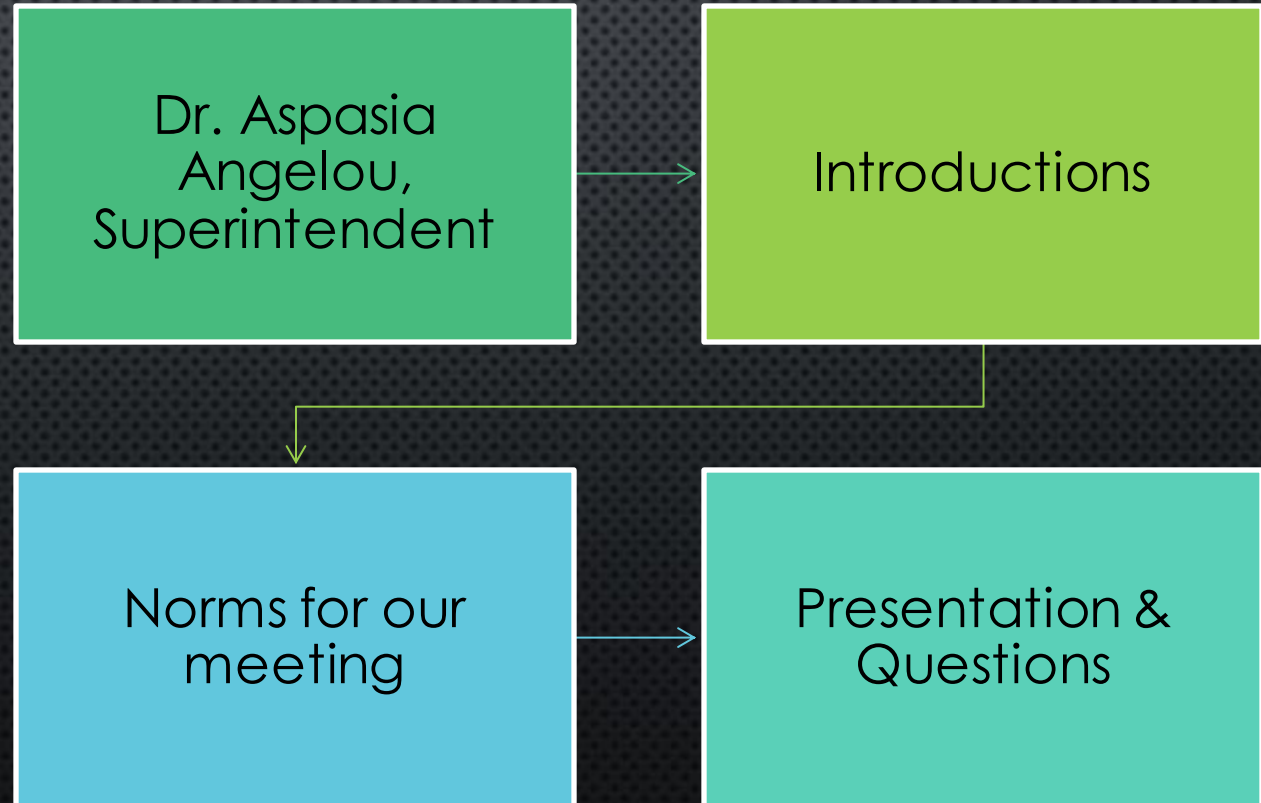


# NADABURG UNIFIED SCHOOL DISTRICT 81

BOND & MOUNTAINSIDE HIGH  
SCHOOL  
VIRTUAL TOWN HALL



# WELCOME, INTRODUCTIONS & NORMS

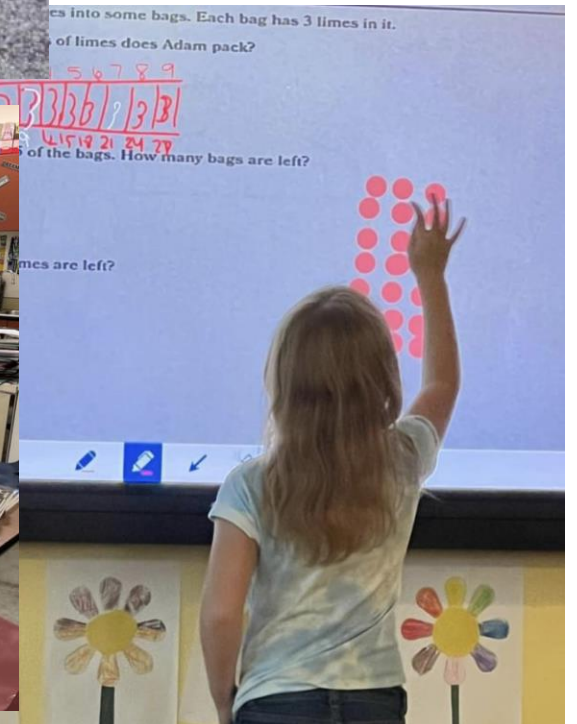


# NORMS

- PLEASE ALLOW FOR THE OPENING PRESENTATION TO BE COMPLETED
- DURING THE PRESENTATION, YOU MAY ADD NOTES OR QUESTIONS IN THE CHAT SO WE DON'T MISS ANYTHING IN Q&A
- PLEASE SPEAK COURTEOUSLY AS WE HAVE STUDENTS ATTENDING
- PLEASE STAY MUTED UNLESS YOU ARE SPEAKING
- NEXT MEETING WILL BE NOV. 1<sup>ST</sup>, 2022, @ 730 PM

# WHAT IS A BOND?

- BONDS ARE LOANS MADE TO THE SCHOOL DISTRICT USED TO PURCHASE CAPITAL ITEMS AND MAKE CAPITAL IMPROVEMENTS TO EXISTING FACILITIES, SUCH AS BUILDING OR RENOVATING A SCHOOL OR PURCHASING SCHOOL BUSES AND ADD TO THE MINIMUM FACILITIES FUNDED BY THE STATE TO MEET THE NEEDS OF TODAY'S STUDENTS.



# WHY IS NADABURG UNIFIED SCHOOL DISTRICT CALLING UPON LOCAL VOTERS FOR A BOND ELECTION?

- THE STATE'S SCHOOL FACILITIES BOARD HAS NOT PROVIDED FUNDING FOR BUILDING MAINTENANCE AND REPAIR TO KEEP FACILITIES UP-TO-STANDARD FOR OVER 8 YEARS.
- THE STATE BUDGET FOR CAPITAL PROJECTS HAS BEEN DRASTICALLY REDUCED – MORE THAN AN ESTIMATED \$18 MILLION TO THE DISTRICT IN THE PAST SIX YEARS. AS A RESULT, BOND FUNDING IS THE ONLY MECHANISM TO BEGIN TO RESTORE, REPAIR AND REFURBISH EXISTING FACILITIES. SCHOOL SECURITY IS A HIGH PRIORITY AND ALL SCHOOLS NEED SINGLE ENTRY POINTS WITH CONTROLS.
- UPGRADES AND SUSTAINABLE RENEWAL OF TECHNOLOGY FOR STUDENTS AND TEACHERS IS CRITICAL. LASTLY, WITH THE GROWTH IN ENROLLMENT IN THE DISTRICT, THE TEMPORARY RENOVATED HIGH SCHOOL WILL BECOME A MIDDLE SCHOOL.
- THE BULK OF THE BOND FUNDS WILL GO TO BUILD THE NEW COMPREHENSIVE HIGH SCHOOL CAMPUS BEYOND THE MINIMUM REQUIREMENTS, TO INCLUDE ATHLETIC FIELDS, AN ARCHERY RANGE AND FLEXIBLE STEM LEARNING SPACES.

# NUSD HISTORICAL TIMELINE TO MAKE THE HIGH SCHOOL DREAM A REALITY

2006-voters elect to be unified K12 district

2019-\$2.4m bond passed to renovate retired building for MHS

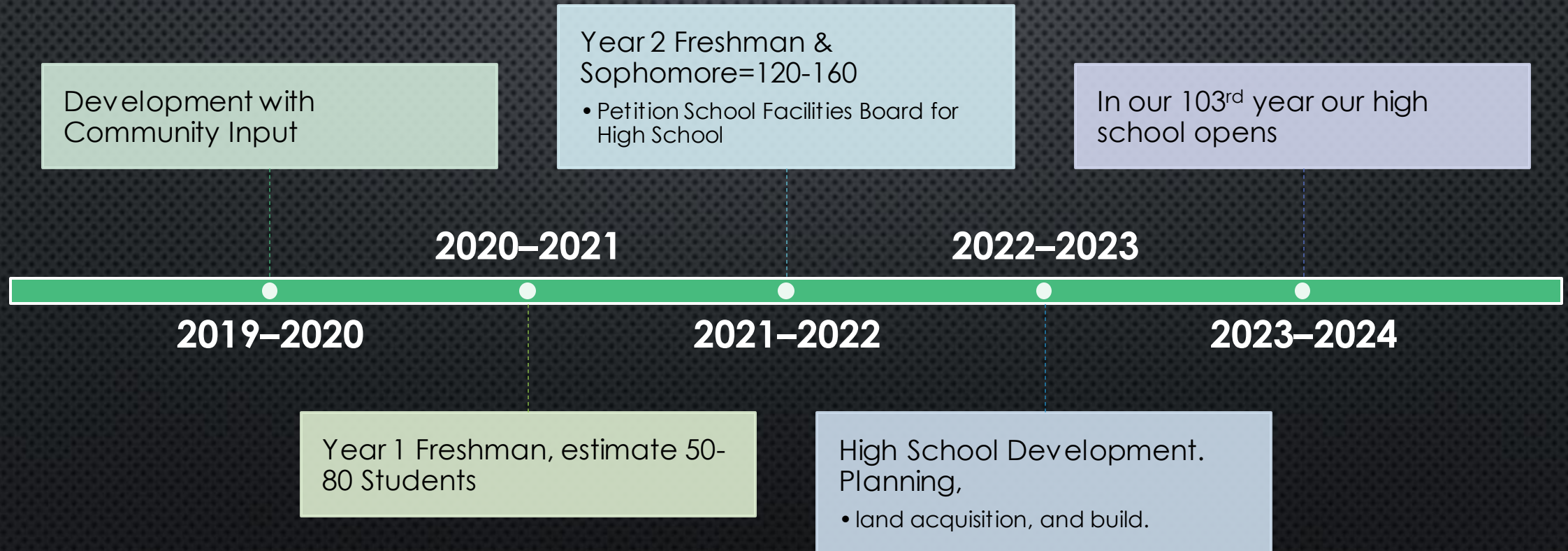
August 2019 MHS opens with goal of 50 students year one

August 17, 2020 Governor lifts EO; NUSD opens in person w/mitigation plan

Spring 2021 Mountainside hits SFOB goal of 121 students

May 2022 First graduating class from MHS; enrollment nears 300 for fall 2022

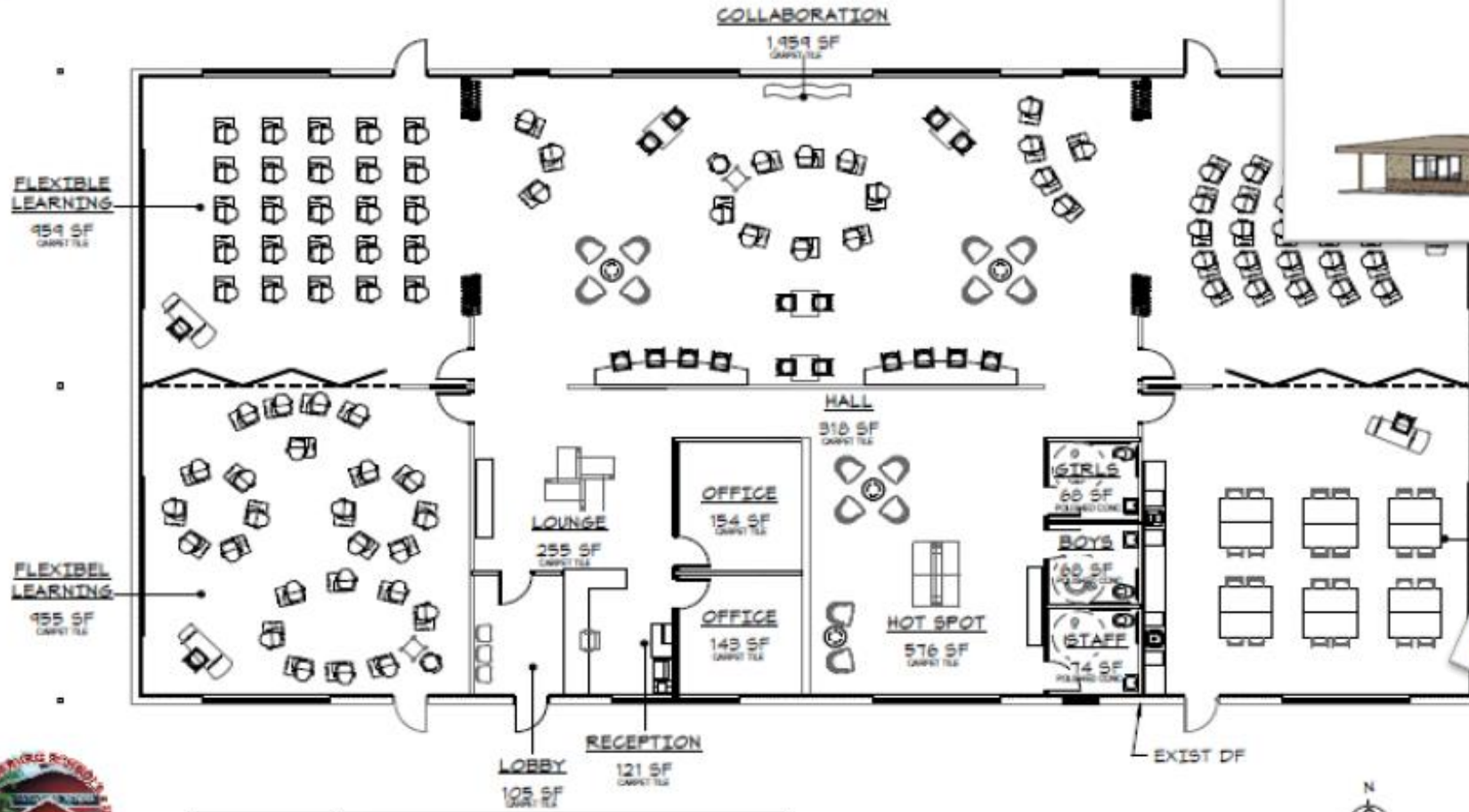
# PROJECTED TIMELINE IN 2019



March 13, 2020 COVID 19

# MHS Renovated Campus

Capacity 90



1	FLOOR PLAN
1" = 10'-0"	



Quality Education: Every Student! Every Day!

**NADABURG**  
Unified School District No. 81



- NEW CONSTRUCTION PROJECT TO ACCOMMODATE GROWTH IN HIGH SCHOOL STUDENT ENROLLMENT FOR MOUNTAINSIDE HIGH SCHOOL WITH ATHLETIC FIELDS AND MULTI-USE LEARNING SPACES BEYOND THE STATE-FUNDED MINIMUM REQUIREMENTS
- IMPROVEMENTS TO THE LEARNING ENVIRONMENT FOR STUDENTS, STAFF AND FAMILIES AT EVERY SCHOOL DISTRICT SITE.
- SUSTAINABILITY OF THE 1 TO 1 COMPUTER INITIATIVE FOR STUDENTS
- IMPROVEMENTS, REPLACEMENTS AND UPGRADES IN THE DISTRICT'S TECHNOLOGY INFRASTRUCTURE, INCLUDING SECURITY, NETWORK CAPABILITY, WIRELESS APPLICATIONS

**WHAT IS THE  
\$20 MILLION  
BOND  
GOING TO BE  
USED FOR?**

# WHAT IS THE \$20 MILLION BOND GOING TO BE USED FOR?

- THE DISTRICT IS RECOMMENDING THAT BOND FUNDS BE USED FOR SAFETY UPGRADES, MAINTENANCE, REPLACEMENTS, AND REFURBISHING OF SCHOOLS AND DISTRICT FACILITIES SUCH AS:
- SECURE SINGLE-ENTRY POINTS FOR ALL SCHOOL SITES
- REPLACEMENT OF AGING SCHOOL AIR-CONDITIONING/HEATING UNITS
- UPGRADING OF FIRE ALARMS AND SECURITY SYSTEMS
- IMPROVING ELEMENTARY PLAYGROUNDS
- TRANSPORTATION VEHICLES FOR STUDENTS
- RENOVATIONS AND IMPROVEMENTS OF DISTRICT FACILITIES
- REPLACEMENT OF OUTDATED FURNITURE AND EQUIPMENT

# WHAT WILL THE BOND BE USED FOR AT THE NEW MOUNTAINSIDE HIGH SCHOOL?

- STEM SPACES
- SINGLE USE RESTROOMS AND LOCKER ROOM RESTROOMS
- ARCHERY RANGE
- LIFE SKILLS CLASSROOM
- FOOTBALL FIELD WITH STADIUM LIGHTS AND BLEACHERS
- BASEBALL FIELD
- SOFTBALL FIELD
- TRACK AND CROSS COUNTRY COURSE
- POSSIBLE AGRICULTURE PROGRAM WITH WORKING FARM
- CAREER TECH SPACES TO COMPLEMENT WEST-MEC PROGRAMS (EX: FAMILY AND CONSUMER SCIENCES NOT OFFERED NEARBY)
- TRANSPORTATION BUSES/VANS FOR STUDENTS

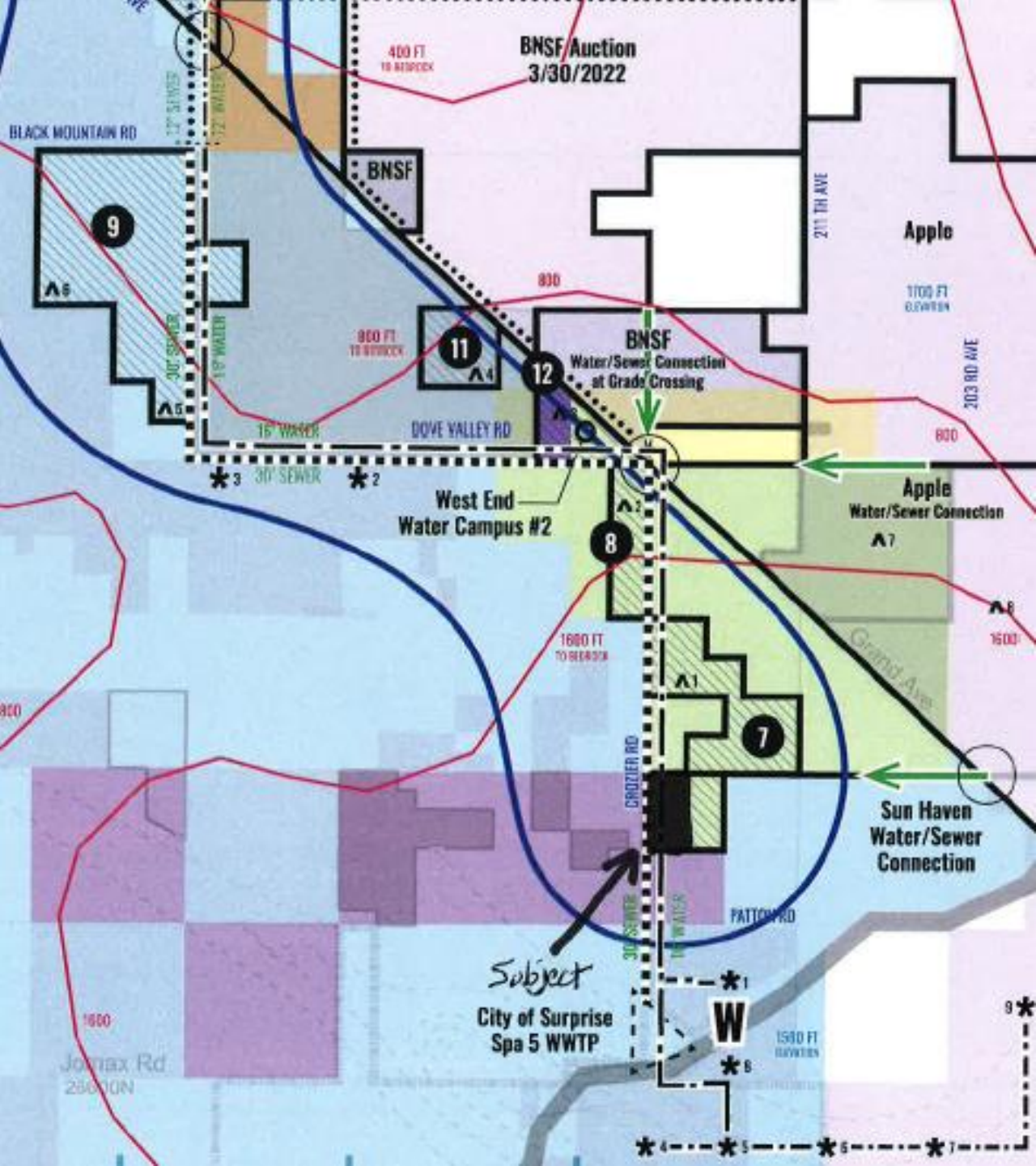
# WHAT WILL THE BOND BE USED FOR AT NADABURG AND DESERT OASIS ELEMENTARY SCHOOLS?

- SECURE SINGLE-ENTRY POINTS FOR ALL SCHOOL SITES
- RESISTANT FILM ON GLASS NEAR LOBBY/ENTRANCE
- HEIGHTENED PERIMETER FENCING
- KEY CARDS FOR ALL EXTERIOR DOORS
- REPLACEMENT OF AGING SCHOOL AIR-CONDITIONING/HEATING UNITS
- UPGRADING OF FIRE ALARMS AND SECURITY SYSTEMS
- IMPROVING ELEMENTARY PLAYGROUNDS
- TRANSPORTATION VEHICLES FOR STUDENTS
- RENOVATIONS AND IMPROVEMENTS OF DISTRICT FACILITIES
- REPLACEMENT OF OUTDATED FURNITURE AND EQUIPMENT

# SFOB NEW SCHOOL FUNDING

Funding Date:  
July 1, 2022:  
**\$22,130,100.00**

Arizona School Facilities Board				New Construction Project Sheet			
County Maricopa District Nadaburg Unified District			Print Date 11/10/2021 CTD 070381000				
Project Number	070381000-9999-007N		<b>Held for Consideration</b>				
School Name Not Assigned						CM At Risk <input type="checkbox"/>	
Project Type	Grade Config	Enrollment	Square Feet	Capacity Divisor	Campus Capacity	Original Cost/Sq. Ft.	Open FY
New School	9-12	500	67000	120	558	\$330.30	2022
School Site <input type="text"/>							
Projected Construction Schedule							
	Board Approval	Plan Review	Bid	Begin Construction	Subst. Completion	Final Completion	
Architect Name	Not Assigned			Contractor Name Not Assigned			
Funding Sources				Site Acquisition Not Included			
Original New Construction Funding					\$22,130,100.00		
Total NC Funding Adjustments					\$0.00		
Total New Construction Funding					\$22,130,100.00		
Deficiency Correction Funding					\$0.00		
Local Funding					\$0.00		
Total Project Cost					\$22,130,100.00		
Comments							



PROPOSED SITE #7

# WHAT FUNDING IS PROVIDED FOR THE NEW MOUNTAINSIDE HIGH SCHOOL FACILITY?

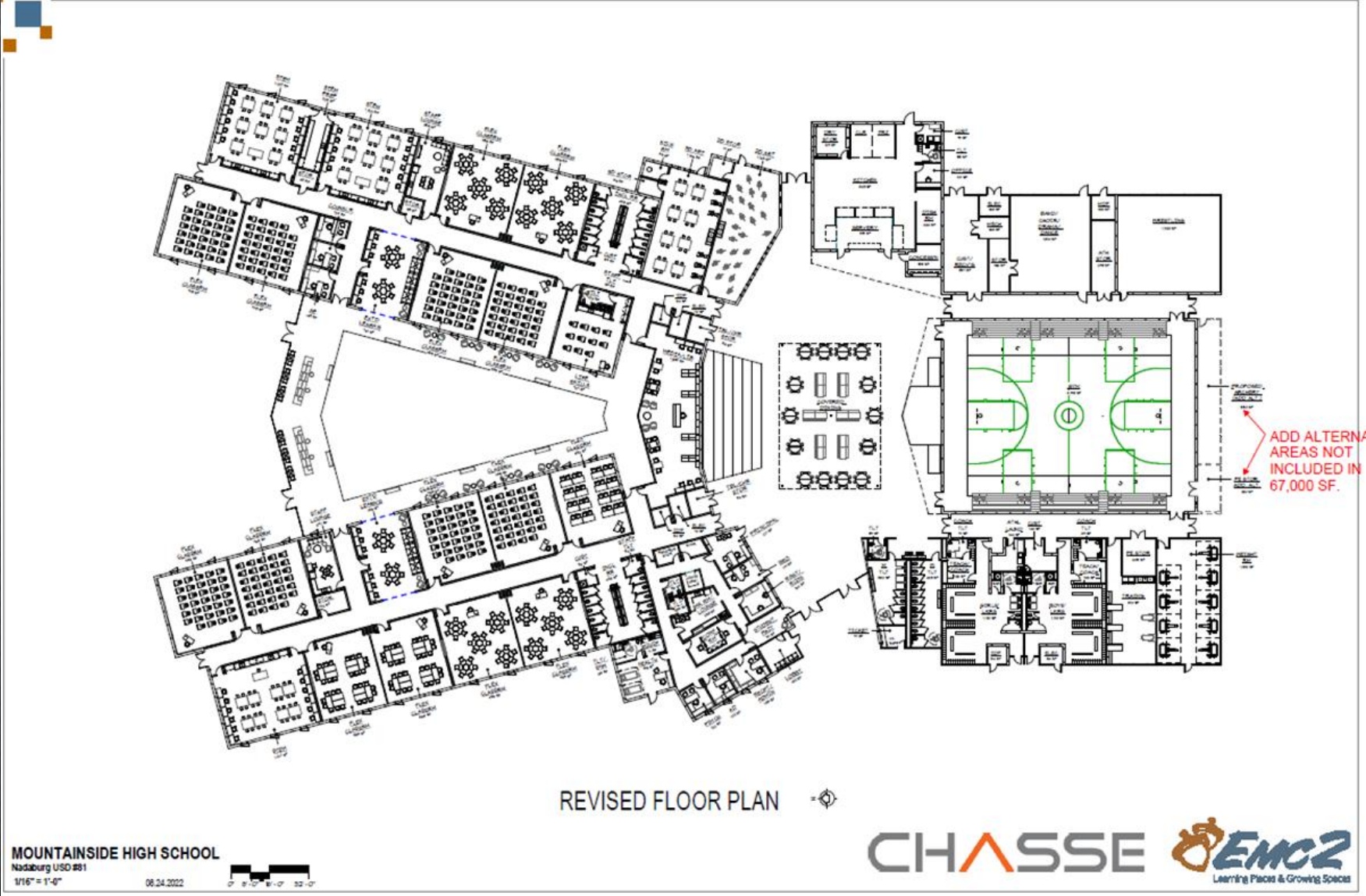
- ARIZONA SCHOOL FACILITIES BOARD ALLOCATING \$21M FOR MINIMUM REQUIREMENTS FOR FACILITY
- ARIZONA SCHOOL FACILITIES BOARD ALLOCATING \$10M FOR NEW MOUNTAINSIDE CAMPUS ON JULY 1, 2022

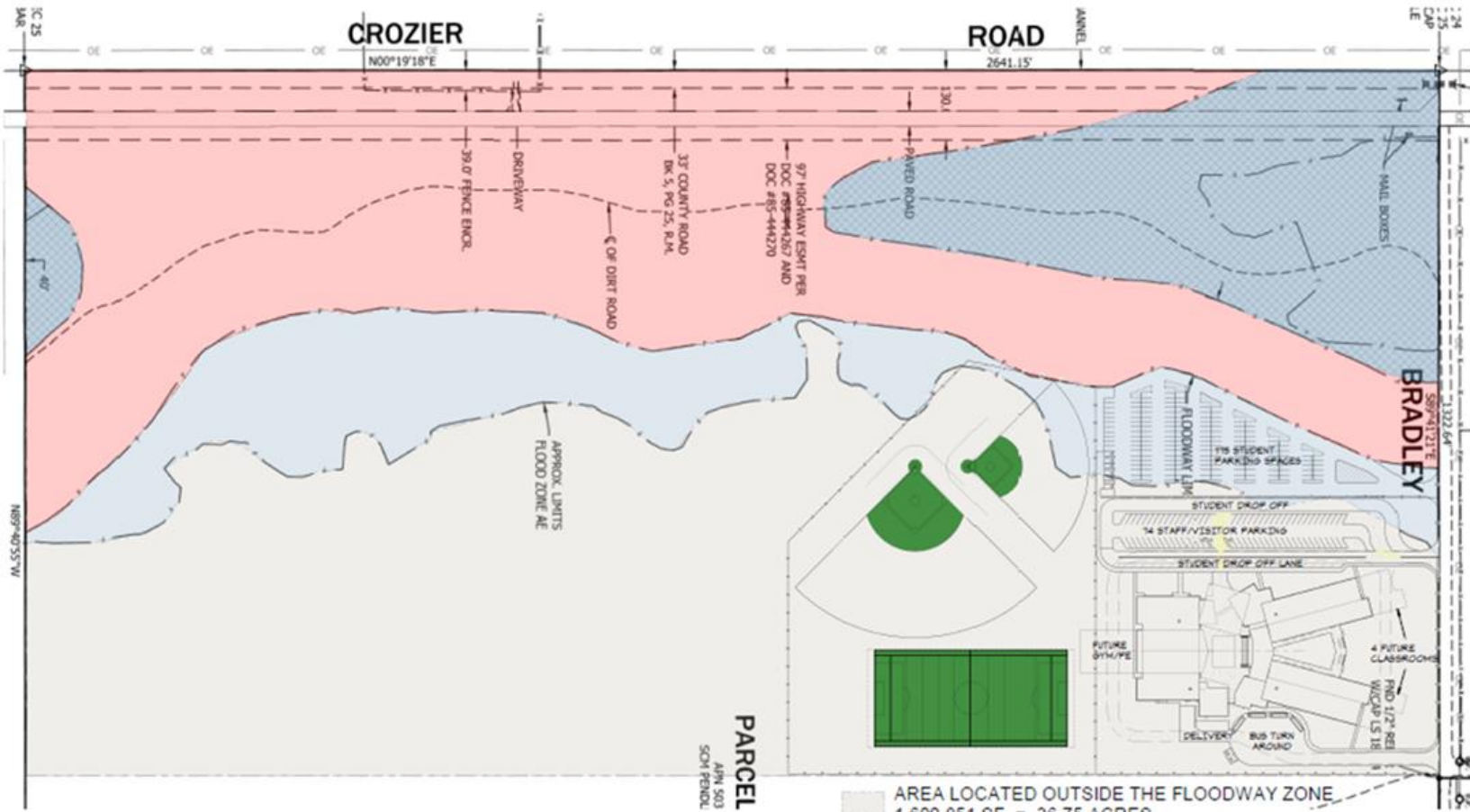


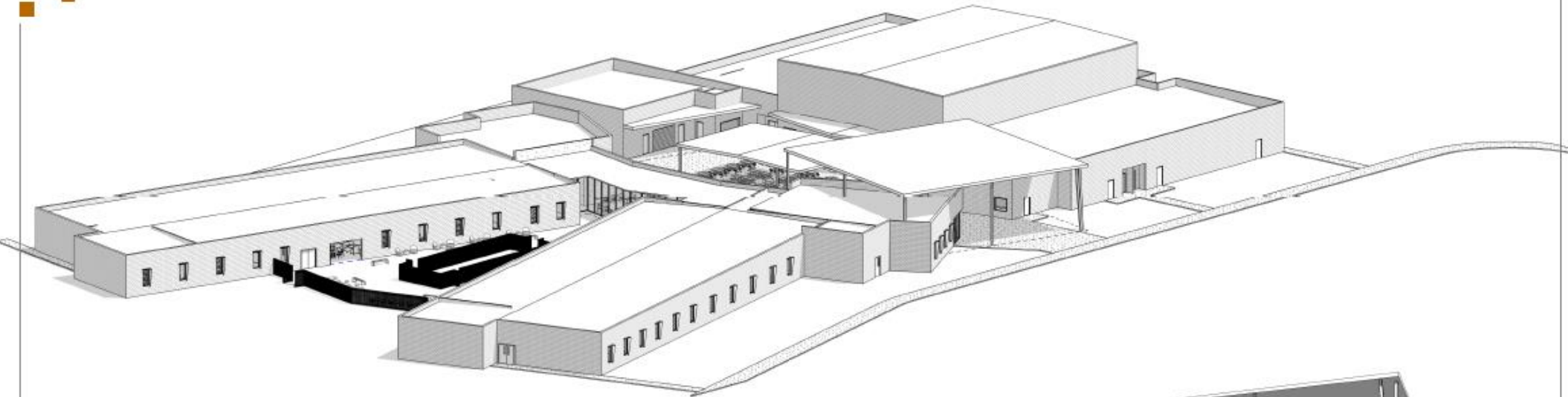
MHS DESIGNED OVER 2 YEARS



# FINAL MOUNTAINSIDE HIGH SCHOOL DESIGN







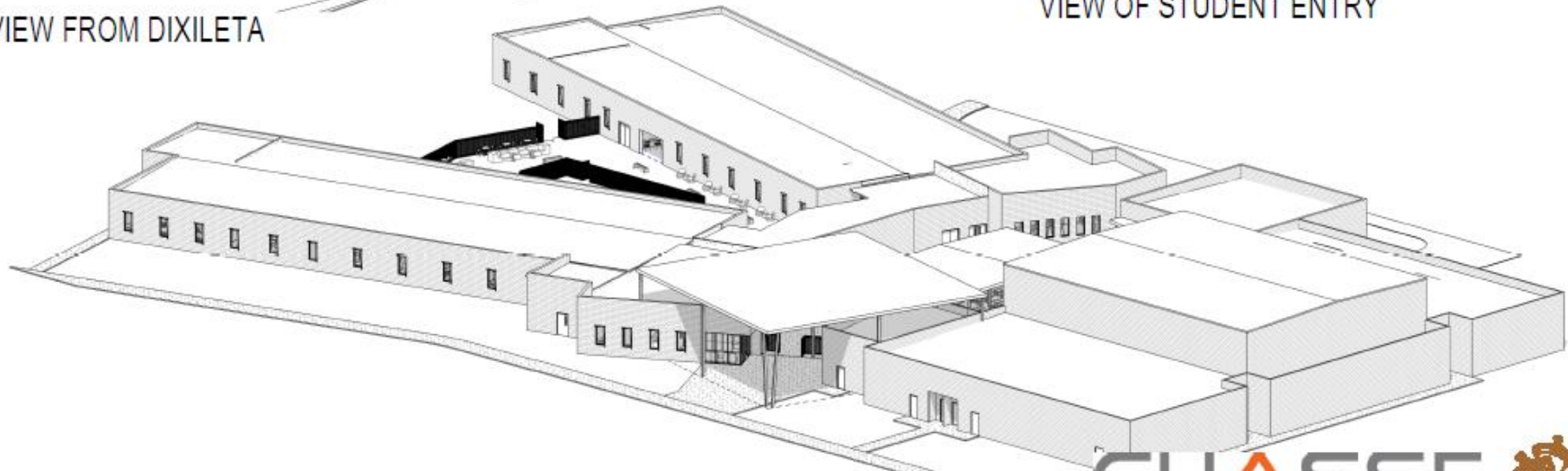
VIEW FROM NORTHWEST



VIEW FROM DIXILETA



VIEW OF STUDENT ENTRY



VIEW FROM SOUTHWEST

NUSD TEAM APPLIES FOR 80 ACRE PARCEL  
APPROVED BY SFOB ON OCT. 5, 2022



Future Site of  
**Mountainside High School**  
Proposed 80-Acre Campus at  
Crozier and Dixileta, Wittmann, AZ



# HOW DO WE KNOW WHEN THE BOND FUNDS ARE USED?

- THE NADABURG DISTRICT IS COMMITTED TO RESPONSIBLE STEWARDSHIP OF BOND FUNDS. ARIZONA LAW REQUIRES THE DISTRICT TO CLEARLY IDENTIFY HOW THE BONDS WILL BE SPENT IN THE VOTER INFORMATION PAMPHLET. ADDITIONALLY, SCHOOL DISTRICTS MUST HOLD PUBLIC HEARINGS ANNUALLY TO INFORM THE PUBLIC ON THE PROGRESS OF HOW THE BOND PROCEEDS ARE SPENT. COMMUNICATION ON THE BOND FUND USAGE WILL BE SHARED WITH STAKEHOLDERS ON A CONSISTENT BASIS ON THE NUSD WEBSITE LOCATED AT [WWW.NADABURGS.D.ORG](http://WWW.NADABURGS.D.ORG) AND THROUGH OTHER CHANNELS.

# HOW WILL THE BOND AFFECT MY TAXES?

- THERE WOULD BE **.86 TAX INCREASE PER \$100 VALUATION** AS A RESULT OF THE SUCCESSFUL PASSAGE OF THE BOND. THIS EQUATES TO \$86 ANNUALLY PER \$100K ASSESSED VALUE.

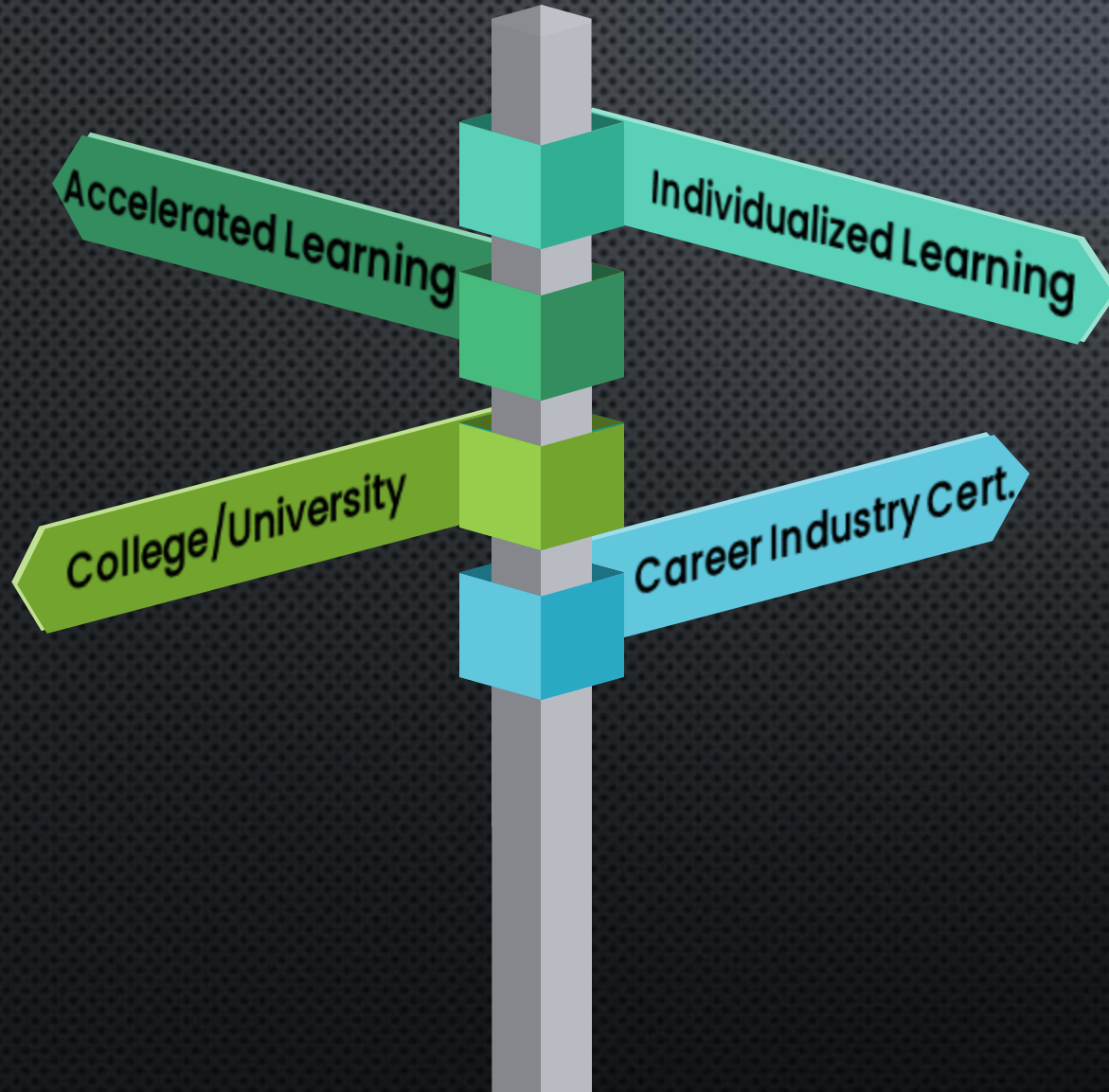
# JOINING WEST-MEC

WILL RESULT IN AN ADDITIONAL TAX TO NADABURG UNIFIED SCHOOL DISTRICT PROPERTY OWNERS IN THE AMOUNT OF \$7.81 FOR MAINTENANCE AND OPERATIONS AND \$17.19 FOR DEBT SERVICE FOR A TOTAL ANNUAL COST OF \$25 PER YEAR FOR THE AVERAGE VALUE HOME IN THE DISTRICT.

AS PART OF WEST-MEC DISTRICT, NADABURG UNIFIED SCHOOL DISTRICT WILL BE ABLE TO PARTICIPATE IN OFFERING ORIENTATION AND INTRODUCTION TO A MULTITUDE OF PROGRAMS INCLUDING:

- ACCOUNTING
- BUILDING TRADES, MACHINERY, WELDING AND AUTOMOTIVE TECH
- INFORMATION TECHNOLOGY, CYBER-SECURITY, CODING
- BIOMED SCIENCE, NURSING AND DENTAL ASSISTING
- VETERINARY ASSISTING
- SPORTS MEDICINE, COSMETOLOGY



# DUAL PATHWAY MODEL





# WHAT HAPPENS IF THE BOND ISN'T PASSED?

- IF THE BOND ISN'T PASSED ON NOVEMBER 8, 2022, THE MINIMUM REQUIREMENTS WILL BE BUILT AS PLANNED, WITHOUT ANY FIELDS, LANDSCAPING, ENHANCEMENTS

<u>Agua Fria High School</u>				<u>Tolleson High School</u>			
GMP -- 12/15/2016				GMP -- 7/19/2018			
							
2016 GMP		Q1 2023 COST (Escalated)		2018 GMP		Q1 2023 ROM (Escalated)	
Total Construction Costs	\$ 75,760,401	\$ 130,686,692	574.95 / SF	\$ 108,007,085	\$ 175,061,484	558.49 / SF	



STATE OF ARIZONA  
SCHOOL FACILITIES OVERSIGHT BOARD

Capital Plan Executive Summary

District Revised (Optional)

The 2023 capital plans are to be submitted to the School Facilities Oversight Board by September 1, 2022. Following is a summary of the revised plan the district is preparing for submittal at that time. The additional square footage is shown in the year in which the district will request the additional square footage to open.

FY 2023	FY 2024	FY 2025	FY 2026	FY 2027	FY 2028	FY 2029	FY 2030	FY 2031
		K-8 with capacity for 914 students						

New Construction Projects Approved or Held for Consideration by the School Facilities Oversight Board as of June 1, 2022

Identified below are the new facilities approved or held for consideration by the School Facilities Oversight Board as of June 1, 2022. **Projects held for consideration are not committed for funding**, but demonstrate the projected need for new facilities based on current demographic projections for the district. The additional square footage is shown in the year in which the School Facilities Oversight Board projects that the district will exceed capacity and will be eligible for the additional square footage to be awarded. Funding for new facilities becomes available in the fiscal year following the award, subject to legislative appropriation.

FY 2022	FY 2023	FY 2024	FY 2025	FY 2026	FY 2027	FY 2028	FY 2029	FY 2030
9-12 with capacity for 558 students (Approved)								

NUSD CAPITAL  
PLAN FOR SFOB

# MHS FOCUS: Combining Innovation with Tradition



## Academics

Individual Learning Plans (ILP), Blended Learning, ASU Prep Digital, Career Opportunity Partnerships, and Technology

## Technology

1:1 Devices, platform partnerships, and collaboration strengthening relevant learning connections.

## School Culture

Driven by student choice & voice, relationship building through mentorships, connections to school and community, and skills development

## Athletics & Extracurricular programs

AIA Membership, driven by student choice supported by faculty and staff

**Quality Education: Every Student! Every Day!**





# THANK

# YOU

LEARN MORE ABOUT THE BOND AT [YESFORNADABURG.COM](https://www.yesfornadaburg.com)

JOIN AND SHARE US ON FACEBOOK