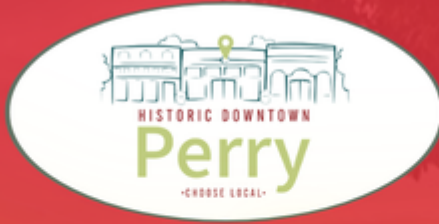


Panther Newsletter

December 2021





StoryWalk[®]

December
10-12



Walk through downtown Perry as you read a story in the shop windows! The first 100 kids to complete the walk and a short survey will be eligible for a FREE BOOK!



***MAPS Assessments: November 29-
December 17***

6th Grade:

ELA- As part of our English Language Arts (ELA) curriculum, we will finish a unit titled *Finding Courage*. In this unit, students will read and consider works about people who develop the courage to face their own fears. We will examine several ways that fear affects us, as well as how people overcome a variety of fears. The texts we will read center on the Essential Question "How do you find courage in the face of fear?" This open-ended question is intended to spark thoughtful discussion. You may wish to explore this question with your student at home as well.

Science- Students will explore the role of water and earth's processes. They will ask questions to determine where water is located on Earth's surface, identify and communicate using maps and graphs, and analyze and interpret data.

Math- We will start unit 4a and will be learning about ratios, rates, and proportions.

SS- The unit for this month is to help students identify political and physical locations in Latin America using map and globe skills introduced in prior grades. The intent of this unit is for students to make connections between culture, location, and natural resources.

7th Grade:

ELA-In Language Arts classes, we will be focusing on writing our argumentative essay. Students have been evaluating texts to determine if space exploration is necessary and if so, how risky is it? They will use these texts to write a final essay by the end of the semester. MAPS testing starts the week of December 6th.

Science- Will begin studying genetics throughout the month of December.

Math- Students in 7th grade math have just wrapped up Unit 2: Expressions and Equations and are currently beginning Unit 3: Ratios and Proportional Relationships which will take us through the end of the semester. By the end of the Unit students will be able to compute unit rates, recognize and represent proportional relationships between quantities, identify the constant of proportionality, as well as use this knowledge to solve multi-step ratio and percent problems through real world scenarios such as simple interest, tax, tips, commissions and fees.

SS-World Geography students will continue studying political geography throughout the month of December.

8th Grade:

ELA- As a part of our ELA curriculum, we will continue working in our unit titled *Places We Call Home*. In this unit, students will analyze plot, themes, characters, themes, and imagery. We will center our texts around the essential question-What are the places that shape who you are? This question will lead to our unit test before Christmas break and into our end of unit writing task.

Science- We will continue studying electromagnetic spectrum, sound, and light. 8th Honors physical science – We are finishing out unit on waves. We will be reviewing for finals after students take the unit test. Finals material will cover everything students have learned this semester. Games and study guides will be posted on Google Classroom for students to practice.

Math- Algebra will be studying Arithmetic & Geometric Sequences, MAP testing, and preparing for final exam.

SS- We will finish Unit 7 which looks at Georgia as it enters the 20th Century. In this unit we have been analyzing Georgia's participation in important events that occurred from World War I through the Great Depression.



Continue enjoying our interactive middle school game board. Click the link to play:

<https://www.thinglink.com/scene/1512163045864898563>

FCA:

FCA Morning Huddle on Wed, Dec 15 @ 7 am in the media center.

Perry Middle FFA:

Winter Pig Schedule for December:

JCYF Showring Showdown

Dec. 10-12, 2021

Students WILL NOT be TOT

Saturday, Dec 11:

9:30-11am: Check-in

11:30-12:30: Feed Clinic

3pm: Showmanship followed by Purebred Gilts

Sunday, Dec 12:

7:30am: Sunday School

8am: Market Show

Winter Pig Classic- Jan. 7-9, 2022

<https://winterpig.fairwire.com/>

NJSA Southeast Regional- Jan. 26-29, 2022

Register Online by December 30th

https://mail.nationalswine.com:8443/forms/southeast_information.asp

Miss Perry Middle Pageant

-Applications and Fees are due no later than December 10th. All girls participating must be in good standing in all of their academic classes, and have stellar behavior. Information and applications can be found at <https://pms.hcbe.net/pageant>. Late applications will not be accepted.

FBLA Christmas Party

12/14/2021 at 2:45- 3:45 PM

Pick-up in front of the gym.

Drama Club

Where? Cafeteria

When? 12/13/2021 at 3:00- 4:00 PM

Competition Cheer Lock in

Location: Gym

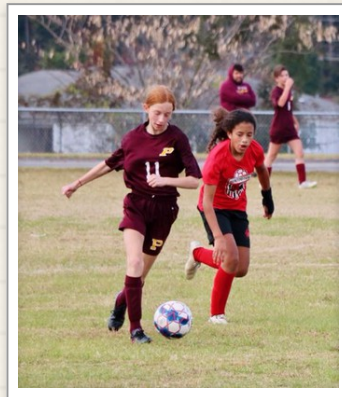
Start Time: 12/3/2021 at 8:00 PM

End Time: 12/4/2021 at 7:00 AM

SOCCKER SCHEDULE:

SOCCER SCHEDULE

Day	Date	Team	Girls	Boys
Wed.	Dec. 1	Feagin Mill	Freedom	Home
Thurs.	Dec. 2	Bonaire	Home	BMS
Tues.	Dec. 7	Mossy Creek	Home	MCMS





Basketball Tryout Information:

- Tryouts begin Tuesday, January 4 (more specific information to come).
 - 7th and 8th grade students only can tryout.
 - Students must have a physical (on file or in DragonFly Max) to tryout.
 - Students must have a DragonFly Max account with all 2021-2022 paperwork completed.
 - Students must pass 5 of 6 classes this current semester to tryout.
 - Physical forms and DragonFly Max information is on our Perry MS webpage under the Athletics tab.
- * If you are unsure of the status of your physical- please email Coach Mizell at randy.mizell@hcbe.net.

Chorus:

December 2nd- Choral Winter Concert (PHS Auditorium)

Band:

Perry Middle School Band

Today ◀ ▶ December 2021 ◻ Print Week Month Agenda ▾

Sun	Mon	Tue	Wed	Thu	Fri	Sat
28	29 2:45pm Honor Band	30	Dec 1 2:45pm Honor Band	2 2:45pm Honor band	3 3:30pm Hair with Ro:	4
5 6pm Band Concert	6	7	8	9	10	11
12	13	14	15	16	17	18
19	20	21	22	23	24	25
26	27	28	29	30	31	Jan 1

Events shown in time zone: Eastern Time - New York

+ Google Calendar

Media Center

Dear Families,

Our March Madness book challenge voting period is quickly approaching. Students can visit the Media Center, check out and read the 16 books on our list. The complete list can be found at pms.hcbe.net/mediacenter. We also have our monthly Scholastic Orders. Shop Our Class Page: <https://orders.scholastic.com/MMFQ7> with Class Code: MMFQ7. I would, also, like to encourage all students to join our 20 Book Challenge. All activities can be found in the Google Classroom with Code: yitzguz

Thanks,

Mrs. Quishawna Henderson




Words from our Principal, Dr. Burch:

 Facebook

Hello Perry Middle Families,
We only have a few weeks left in this semester. I know our students and teachers have worked extremely hard and I look forward to seeing the fruits of their labor on the final report card. Remember, class finals are **December 15th-17th**, and December 17th is a half day. In closing, I want to thank all of you for your support during the first semester. Perry Middle is blessed with great families, students, support staff members, and teachers! Have a blessed holiday season.

 495 Perry Parkway, Perry, GA, U...

 heath.burch@hcbe.net

 478-988-6285

 pms.hcbe.net

