



Make A Donation Today

November 2022 Newsletter

Hello Gene,

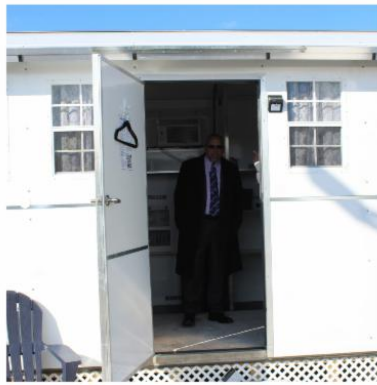
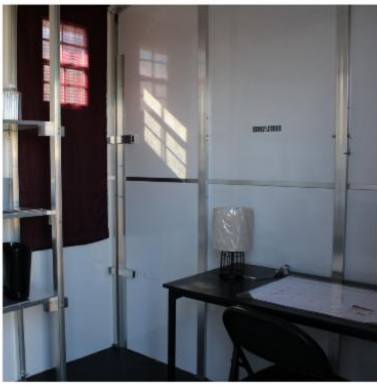
The name Gateway Community Action Partnership reflects our expanded coverage area, but more importantly, it signifies what we are all about. We are a gateway to success for individuals and families in our community and we achieve those results through actions done in partnership within that very community we serve. So please take a minute to read our newsletter and learn more about Gateway Community Action Partnership and our impact in our communities.

Agency Mission And CAP Promise

The agency's mission is to provide services that improve the quality of life and promote self-sufficiency.

CAP Promise: Community Action changes people's lives, embodies the spirit of hope, improves communities, and makes America a better place to live. We care about the entire community, and we are dedicated to helping people help themselves and each other.

Gateway and Partners Hold Ribbon Cutting Ceremony for "Village Of Hope" Transitional Housing



Gateway Community Action Partnership, The Kintok Group, and the Reentry Coalition of New Jersey held a ribbon-cutting ceremony for Village of Hope, a new transitional housing facility, on November 17. The site is made up of six 100-square-foot tiny houses and a community room, and was developed for individuals as they transition out of the criminal justice system. Individuals who participate in the program can stay in these units for up to six months as they receive reentry services such as assistance with employment, budgeting, referrals to health and social services, and help finding permanent housing.

“Homelessness is something that exists not only in the Great City of Bridgeton, but in municipalities across New Jersey and America,” said Albert B. Kelly, CCAP, President and CEO of Gateway Community Action Partnership and Mayor of Bridgeton. “We view the Village of Hope as an exciting and innovative pilot program here to help those reentering society have a safe place to call home. But it doesn’t end there. We will work with these individuals to assist them in finding work, permanent housing and other help they may need.”

"What we are doing here today is the model of that we need to follow in so many of the social issues we face," said Rev. Dr. Robin Weinstein, Pastor of Bethany Grace Community Church. "It is a model of innovation and collaboration, working together and breaking down the walls that divide us and addressing the common concerns we are facing. This is a human issue that affects us not only for our humanity and morality, but it impacts us fiscally as a society. Homelessness and reentry and the costs of people going back into our prison system and back into the hospital system is an exorbitant cost. When you have individuals reentering society and you house them, it saves money and it saves lives. I do hope this will serve as a pilot project for the community to see the benefits of this."

The event included tours of the housing units, as well as a lineup of speakers who were indispensable for the project’s success. Speakers included: Albert Kelly, Mayor of the “Great” City of Bridgeton, and President/CEO of Gateway Community Action Partnership; Edward Durr, New Jersey State Senator; Rev. Doctor Robin Weinstein, Pastor of Bethany Grace Community Church; Paul Taggines, Chief Operating Officer of The Kintok Group; Kevin McHugh, Executive Director of the Reentry Coalition of New Jersey; and David Wolfsgruber, Executive Director of the New Jersey State Parole Board.

The event was covered by three media outlets: NJ Spotlight News, NJ.com, and the Vineland Daily Journal. See the following links for each publication.

[NJ Spotlight News](#)

[NJ.com](#)

[Vineland Daily Journal](#)



National Head Start Association Visits Atlantic City Head Start



Malkia Payton-Jackson, the Director of Alumni Engagement with the National Head Start Association (NHTA), visited Gateway’s Head Start Center in Atlantic City as part of a series of Head Start site visits. Payton-Jackson expressed her excitement regarding the visit, and stated that the center is “a beautiful, safe environment full of light and warmth where [children] can explore and grow.”

Among those at the event were Edward Bethea, Gateway Executive Vice President and COO; Dr. Colleen Turner, Director of Operations, Gateway Head Start/Early Head Start, Atlantic and Cape May Counties; Miguel Maldonado, Director of Operations-North, Gateway Community Action Partnership - Early Head Start/Head Start; and Lucila Barrios, Assistant Director of Program Services, Head Start Education Manager.

Gateway Awarded \$10,000 Grant To Support Literacy Services



From left: Betsy Amoroso, United Way of Delaware; Laura Pistoia, Director of Literacy Services at Gateway; and Jennifer Martin, President of Literacy Volunteers of Salem and Cumberland Advisory Board.

United Way of Delaware awarded Gateway's Literacy Volunteers of Salem/Cumberland Counties a \$10,000 grant to support 2023 services. Gateway was one of 11 recipients serving Salem County. Laura Pistoia, Director of Literacy Services, attended an award ceremony and check presentation held by the grantor. This was an opportunity to hear remarks from the United Way President and CEO, Dr. Michelle A. Taylor, and meet fellow grantees positively impacting the Salem County community.

Hamilton 1 Head Start Children Enjoy Pajama Day In The Classroom



Head Start students at Hamilton 1 Head Start enjoyed a Pajama Day in their classrooms to celebrate Halloween. Teachers planned fun activities, arts and crafts, and story time, and Christine's Hope for Kids provided goody bags for the children.

Foster Grandparent Program Networks At Cape Atlantic Caregiver Coalition Resource Fair

Natalia Uribe, Foster Grandparent Program Lead Director, and Maria Velez, Foster Grandparent Director, attended the Cape Atlantic Caregiver Coalition Resource Fair at the Holy Trinity Greek Orthodox Church in EHT on November 1. They were able to network with other local caregiving and senior organizations in the area and introduce their program to potential new volunteers.



Hamilton 1 Head Start Students Participate in Grow NJ Kids Research Study



Four students in “Red Class” at Hamilton 1 Head Start were selected to participate in a randomized research study for Grow NJ Kids. The children were randomly selected by NIEER (the National Institute for Early Education Research), in partnership with the NJ Division of Human Services. The students were asked questions such as first and last name, date of birth, gender, IEP status, and home language. Teachers also filled out surveys for each student. NIEER explains that “the purpose of this study is to capture differences between programs enrolled in GNJK early on compared to those who have recently joined this program, as well as understand... child progress.”



You can support Gateway's mission "to provide services that improve the quality of life and promote self-sufficiency" while shopping at Amazon's "AmazonSmile." Please click on the link below the next time you shop. More information about the program follows the link. Thank you.

[Click Here To Donate To Gateway Through AmazonSmile!](#)

About AmazonSmile

What is AmazonSmile?

AmazonSmile is a simple and automatic way for you to support Gateway Community Action Partnership every time you shop, at no cost to you. When you shop at smile.amazon.com, you'll find the exact same low prices, vast selection and convenient shopping experience as Amazon.com, with the added bonus that Amazon will donate a portion of the purchase price to Gateway.

How do I shop at AmazonSmile?

To shop at AmazonSmile simply click on the link above or go to smile.amazon.com from the web browser on your computer or mobile device. You may also want to add a bookmark to smile.amazon.com to make it even easier to return and start your shopping at AmazonSmile.

Which products on AmazonSmile are eligible for charitable donations?

Tens of millions of products on AmazonSmile are eligible for donations. You will see eligible products marked "Eligible for AmazonSmile donation" on their product detail pages. Recurring Subscribe-and-Save purchases and subscription renewals are not currently eligible.

Can I use my existing Amazon.com account on AmazonSmile?

Yes, you use the same account on Amazon.com and AmazonSmile. Your shopping cart, Wish List, wedding or baby registry, and other account settings are also the same.

Welcome to Gateway CAP's New Hires!

Ulibo Klaas - Gateway Scholars

Leo Klaas - Gateway Scholars

Clarnayja Acevedo - Gateway Scholars

Kimberly Gollub - Buena Vista Head Start

Evelyn Monroy Romero - Buena Vista Head Start

Ernesto Perez - Coaching Boys Into Men

Harry Ayars - Code Blue

Tonya Allen Brown - Code Blue

Latanya Mack - Code Blue

James Suggs - Code Blue

Delry Williams - Code Blue

Donald Kwasnicki - Code Blue

Rejeana Perkins - EHS Germantown

Kimberly Wilkerson - EHS Germantown

Desarae Smalls - EHS Germantown

Brianna Howard - EHS Germantown

Markeya Thompson - EHS Philadelphia
Melissa Duque Correa - GHSEEC Head Start
Tionna White - GHSEEC Head Start
Angelica Lorenzo - Hammonton Head Start
Cherie Holloway - HS Paulsboro
Taylor Fox - HS Paulsboro
Mary Diaz - HS Rivers Edge Abbott
Vimery Ortiz - HS Rivers Edge Infant Toddler
Aylin Lopez Cruz - Linwood Head Start
Melanie Rodriguez - Wellness Center
Raquel Matias - Millville
Aurora Pena De Arias - Pleasantville Head Start

Gateway Community Action Partnership

110 Cohansey Street
Bridgeton, NJ 08302
Phone: (856) 451-6330

Contact Us Today



Gateway Community Action Partnership | 110 Cohansey Street, Bridgeton, NJ 08302

[Update Profile](#) | [Constant Contact Data Notice](#)

