



Hello, St. Anne Families.

Remember to re-register tuition must be up to date. Also, as of Monday, if extended care is not up to date, other arrangements must be made for before and after school care.

Included in this week's communication is a list of this summer's camps. Please submit camp forms as soon as possible; as space is limited.

All clubs and homework club will end in April 30, 2025.

Please be sure to read through this communication.

Thank you for all you do for your children and our school.

Have a blessed weekend.

Mrs. Karen Miklus



April 23, 2025

Dear St. Anne School Families,

Thank you for your patience as our principal search is nearing its final stages. We have had so much interest in St. Anne School that our interview process has been lengthy.

Additionally, as we begin planning for the next school year at St. Anne, we want to share an important update about our class structure for 2025-2026. This is within the context of what we are calling *Advancing St. Anne School*, an exciting initiative.

*Advancing St. Anne School* aims to accomplish three things:

1. Deepening learning opportunities for students by creating a new library and media center.
2. Expanding opportunities for prayer by installing a chapel in the school building.
3. Enriching opportunities for learning through appropriate class sizing.

Item #3 deserves more explanation. Due to a decrease in student enrollment across all grades, we are transitioning to one class per grade level for the next school year to ensure the most effective use of resources and to provide a more personalized learning experience for each student.

This means several grades will have one homeroom teacher, and class sizes will remain within our target range of 25-27 students to ensure every student continues to receive quality attention and support. Classes will be capped at these totals and, if necessary, waiting lists will be created. Classroom aides will be available to provide support within single classroom grades. An additional classroom will be added if existing or future enrollment reaches above 30 students.

We are working diligently to ensure a smooth transition and maintain our positive learning environment for each and every student. This transition allows us to provide a more cohesive learning environment, build stronger teacher-student relationships, and foster a greater sense of community within each grade.

While this is a significant shift to our school structure, please know that we will continue to nurture our students' God-given gifts through strong academics, commitment to prayer, service, and respect for others. Our dedication to strong teaching and learning remains unchanged. Class sizes will still allow for meaningful relationships and personalized instruction.

We will work closely with staff to ensure a smooth transition for students and families. We appreciate your understanding and cooperation as we work together to provide the best possible learning environment for our students at St. Anne School.

Rev. Anthony Mongiello  
Pastor

Dr. Michael St. Pierre  
Superintendent of Catholic Education  
Diocese of Allentown

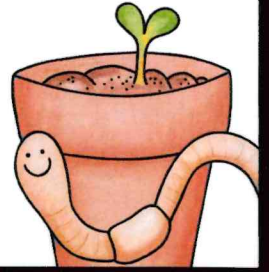
LEARN

SUCCEED

LEAD



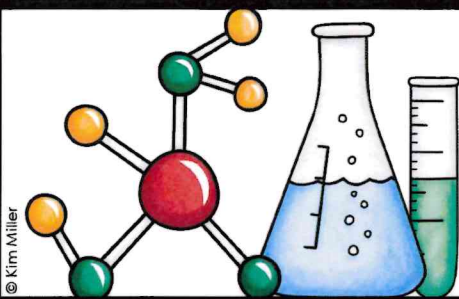
# MAY



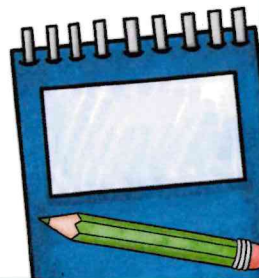
SUN MON TUE WED THUR FRI SAT

**Notes:** Please remember all after school clubs and meetings have ended for the school year.

			1	2 May Crowning Mass 8:45  Middle School Dance	3
4	5  Teacher Appreciation Week	6  Band Concert 6:30 in the Community Center	7  PSA Family night at the Iron Pigs 6:45	8  Art Show 6:00 Community Center	9  10
11	12	13  Talent Show Practice 3-4:30 NO BAND	14  Talent Show Practice 3-4:30  3 <sup>rd</sup> gr. Field trip 5 <sup>th</sup> gr. Field trip	15  Talent Show	16  8 <sup>th</sup> Gr. Class Trip
18	19  2 <sup>nd</sup> Gr. Field trip PSA Meeting 6:00 Coffee with the Principal following	20  IRON PIGS DAY!	21	22  1 <sup>st</sup> gr. Field trip	23  Safety Town Assembly Early Dismissal
25	26  NO School	27  Qdoba dine & donate 4-8 6 <sup>th</sup> & 7 <sup>th</sup> gr. Field trip Final Instrument Lessons. Instrumental Assembly K-2 Time TBD	28  KONA Ice Truck Kinder Closing Activities 6:00	29  Volunteer Mass	30  31



# JUNE



SUN MON TUE WED THUR FRI SAT

1	2 8 <sup>TH</sup> Gr. Graduation 6:00 Kindergarten Testing	3 OLYMPIC DAY Gr. 1-4 FULL DAY	4 OLYMPIC DAY Gr. 5-8 FULL DAY	5 LAST DAY OF SCHOOL!!!  10:00 DISMISSAL	6	7
8	9 Office Open 9-12	10 Office Open 9-12	11 Office Open 9-12	12 Office Open 9-12	13 Office Open 9-12	14
15	16 Office Closed	17 Office Open 9-12	18 Office Open 9-12	19 Office Open 9-12	20 Office Closed	21
22	23 Office Closed	24 Office Open 9-12	25 Office Open 9-12	26 Office Open 9-12	27 Office Closed	28
29	30 Office Closed	Notes:				



## **St. Anne Summer Camps**

### **Preschool Fun** with Miss Sherry

Students from Pre-K 3 & 4

May 19-23

Half-Day 8:30-11:00 \$130 per student

Full-Day 8:30-2:00 \$250 per student

\*Please provide a bagged lunch

### **GYM GAMES** with Mrs. Carbone

Students entering grades 2-6th

June 16-20; 9-12

\$130 per student

### **Art Camp: Reduce, Reuse, & Recycle** with Mrs. Boyle

Students entering grades 3-5th

June 16-20; 9-12

\$130 per student

### **SUMMER FUN** with Miss Heather and Miss Meghan

Students entering grades Prek -4

June 16-June 20; 9-12

\$130 per student

### **Arts and Crafts** with Miss Heather and Miss Meghann

Students entering grades Pre-K through 4th

June 23-June 27; 9-12

\$130 per student

# **The Wizarding World of Harry Potter** with Mrs. Estock

Students grades 3-8

July 21-25; 9-12

\$130 per student

## *Cooking and Baking* with Mrs. Costanbader and Mrs. Reichard

Students entering grades 3rd-8th

July 21-25; 12-3

\$130 per student

\*\*\*\*\*

\*Please make checks payable to St. Anne School

Student Name \_\_\_\_\_

Camp \_\_\_\_\_

\_\_\_\_\_

\_\_\_\_\_

Student Name \_\_\_\_\_

Camp \_\_\_\_\_

\_\_\_\_\_

\_\_\_\_\_

Student Name \_\_\_\_\_

Camp \_\_\_\_\_

\_\_\_\_\_

\_\_\_\_\_



# **St. Anne School 2024-2025 Yearbook On Sale now for 3 WEEKS**

**Orders due by  
Friday, May 2nd  
\$35.00**

**Please complete the order form and return to school by Friday, May 2nd.**

**Checks payable to: St. Anne School Yearbook. If you are ordering more than one yearbook, please specify each student and their homeroom to ensure correct delivery of books. If students are sharing one book, specify which student should receive it.**

---

## **2024-2025 YEARBOOK ORDER FORM**

**Parent Name:** \_\_\_\_\_

**Student Name** \_\_\_\_\_ **Homeroom:** \_\_\_\_\_

**Student Name** \_\_\_\_\_ **Homeroom:** \_\_\_\_\_

**Number of yearbook(s)** \_\_\_\_\_ **Total cost:** \_\_\_\_\_



St. Anne School "Where we lovingly teach students values and value every student"

# ATTENTION GOLFERS

(and friends of St. Anne's)

## **St. Anne School Golf Tournament Friday, August 8, 2025**

**IN SUPPORT OF ST. ANNE SCHOOL  
TO FUND REPLACEMENT OF THE FLOOR  
IN THE COMMUNITY CENTER**

**8:00 AM/Four Person Scramble  
Bethlehem Golf Club/400 Illicks Mill Rd. Bethlehem, PA**

**SPONSORSHIPS AVAILABLE!**

Register at <https://birdease.com/SASgolf2025>

OR contact Tom Green/ [biz555@ptd.net](mailto:biz555@ptd.net)/ 610-730-3224

**"PITCH IN TO  
FINISH FUNDING  
THE NEW FLOOR"**



# St. Anne School - Parent School Association (PSA)

## CALENDAR OF EVENTS 2024-2025

*(as of 4/24/25 – subject to change)*

Sunday, September 15 – Weds, September 18, 2024	Scholastic Book Fair
<b>Monday, September 16, 2024</b>	<b>PSA Meeting 6pm</b>
Friday, September 27, 2024	Dine & Donate – Panera
Monday, October 14 – Saturday, October 19, 2024	Casper PSA Theater support
<b>Monday, October 21, 2024</b>	<b>PSA Meeting 6pm</b>
Thursday, October 31, 2024	Family Pumpkin Carving Night
Thursday, November 7, 2024	Dine & Donate – Pat's Bistro
Thursday, November 14, 2024	Bayou Boys Pierogi pick up
Friday, November 15, 2024	Dance-A-Thon
<b>Monday, November 18, 2024</b>	<b>PSA Meeting 6pm</b>
Saturday, November 30, 2024	Phantoms Night
Thurs & Fri, December 5 & 6, 2024	Gertrude Hawk pick up – Christmas
Monday, December 9 – Weds, December 11, 2024	Santa Shop
<b>Monday, December 16, 2024</b>	<b>PSA Meeting 6pm</b>
Thursday, December 19, 2024	Family Gingerbread House Night
<b>Monday, January 13, 2025</b>	<b>PSA Meeting 6pm</b>
Sunday, January 26 – Weds, January 29, 2025	Scholastic Book Fair
Sunday, January 26 – Friday, January 31, 2025	Catholic Schools Week
<b>Monday, February 10, 2025</b>	<b>PSA Meeting 6pm</b>
Thursday, February 13, 2025	Mr. Pastie pick up
Wednesday, February 19, 2025	Dine & Donate – Martellucci's
Saturday, February 22, 2025	Middle School Dance – Valentine
Tuesday, March 4, 2025	Fastnacht Day – Fastnachts for all!
Friday, March 14 – Sunday, March 16, 2025	Tricky Tray
Wednesday, March 19 – Tuesday, April 2, 2025	Dine & Donate – Matey's Pizza
<b>Monday, March 24, 2025</b>	<b>PSA Meeting 6pm</b>
Monday, March 31, 2025	Gertrude Hawk pick up – Easter
Thursday, April 10, 2025	Matey's Pizza pick up 2-4pm
Sunday, April 13, 2025	Parish Egg Hunt
<b>Monday, April 14, 2025</b>	<b>PSA Meeting 6pm</b>
Friday, April 25, 2025	Pretzel Day – Pretzels for all!
Friday, May 2, 2025	Middle School Dance - Farewell
Monday, May 5 – Friday, May 9, 2025	Teacher Appreciation Week
Wednesday, May 7, 2025	Iron Pigs Night
Thursday, May 15, 2025	Talent Show
<b>Monday, May 19, 2025</b>	<b>PSA Meeting 6pm</b>
Tuesday, May 27, 2025	Dine & Donate – Qdoba 4-8pm
Wednesday, May 28, 2025	Kona Ice End of Year Ice Truck
Tuesday, June 3 & Wednesday, June 4, 2025	Olympic Days

*Join us for St. Anne School's 6<sup>th</sup>–8<sup>th</sup> Grade...*



## **Middle School Dance**

**Friday, May 2, 2025  
7-9 pm**

**Photo  
Booth!**

**Photo  
Booth!**

**School ID REQUIRED - \$5 Admission  
Food and Drink available for purchase**

**Dress Code: Plain tops (no slang, no inappropriate icons or symbols), fingertip length skirts/dresses, no hats**

**Enter through main gym doors**

***We'll be saying farewell to our 8<sup>th</sup> grade graduates and celebrating the end of the 2024-2025 school year!***

# **QDOBA IS BRINGING FLAVOR TO OUR COMMUNITY**



**FUNDRAISER FOR**

**ST ANNE SCHOOL**

**TUESDAY, MAY 27, 4PM-8PM**

**2417 SCHOENERSVILLE RD  
BETHLEHEM, PA 18017**

***25% of sales donated***

Order online with the digital coupon on this flyer, or show this flyer in restaurant. Also valid on Catering orders.

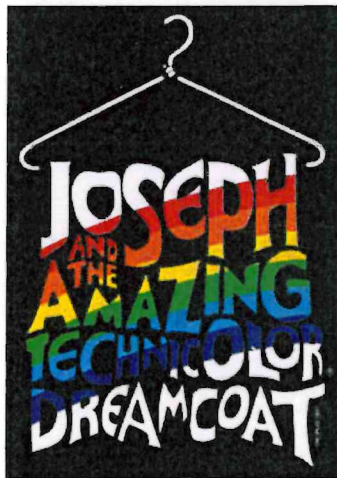
**SCAN THIS QR CODE  
IN RESTAURANT**



**OR ENTER THIS  
COUPON CODE ONLINE  
QDOBAGIVES**



QDOBA commits to donating 25% of product sales (excluding any tax, delivery, gift card purchases and alcohol purchases) made lawfully and in accordance with this agreement to your organization. In order to receive a donation, your organization must reach the minimum sales amount of \$150. If this amount is not reached, your organization will not receive a check for the fundraiser. QDOBA reserves the right to withhold donations if QDOBA's fundraiser guidelines are violated or if your fundraiser website is abused and/or used in a manner not in accordance with this agreement. QDOBA Mexican Eats is a registered trademark of QDOBA Restaurant Corporation. ©QDOBA Restaurant Corporation 2025.



FRI & SAT  
**APR 25 & 26** | TIME: **7 PM**

SUNDAY  
**APRIL 27** | TIME: **3 PM**

FRI & SAT  
**MAY 2 & 3** | TIME: **7 PM**

**STUDENTS MUST BE ACCOMPANIED BY AN ADULT**

**BECAHI THEATER PRESENTS...**

**PARTNER SCHOOL APPRECIATION**

**STUDENT NAME:**

**GRADE SCHOOL:**

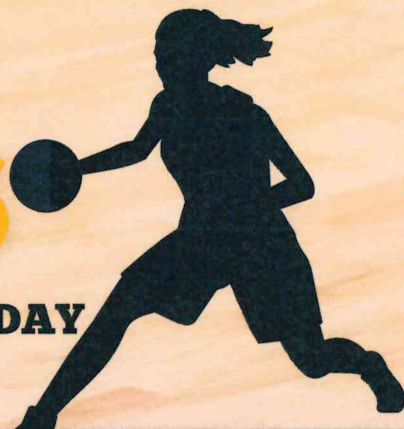
**USE THIS TICKET FOR 1 FREE CHILD ADMISSION**

# *Girls* **BLUE & GOLD** **BASKETBALL CAMP**

**OPEN TO GIRLS IN GRADES 4-8TH**

**JUNE**  
**23-26**

**MONDAY - THURSDAY**  
**12PM-5PM**



**ADMISSION**

**\$130**

**PER PERSON**


**JEFF DAILEY COURT AT NDGP**

**SIGN  
UP!**

**EMAIL:**

**Coach Kopp:**  
**[jkopp@ndcrusaders.org](mailto:jkopp@ndcrusaders.org)**





Promo Code - Summer25  
to Save \$30 (3/31)

All Campers  
will receive a  
camp T-Shirt  
(through 6/6)

# LOU CECALA

*Memorial Summer Baseball Camp*

**Early Drop off**  
available for additional Cost



Notre Dame High School  
3417 Church Road, Easton, Pa 18045



**Register here**



**June 16-19 9 am - 12:30 pm**

Ages 5-14

### About This Camp:

The 2025 Lou Cecala Youth Baseball Camp will be presented by the Notre Dame High School coaches and players. Other area high school coaches will assist as well. The camp will provide young athletes with knowledge of basic and advanced fundamentals through various skills and drills. The camp is held in an atmosphere of learning and having fun, while preparing players with new skills in a safe environment.

[https://www.eventbrite.com/e/2025-lou-cecala-memorial-baseball-camp-tickets-1153405519959?](https://www.eventbrite.com/e/2025-lou-cecala-memorial-baseball-camp-tickets-1153405519959?aff=oddtcreator)

[aff=oddtcreator](#)

More Information: [mbedics@ndcrusaders.org](mailto:mbedics@ndcrusaders.org)