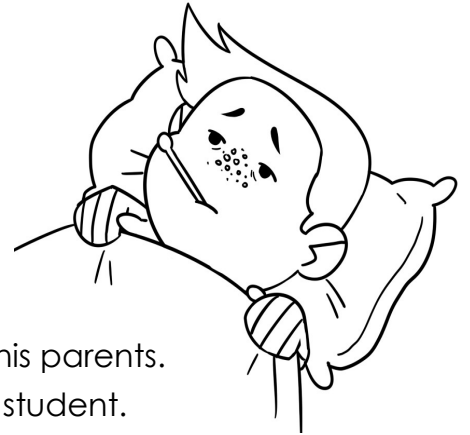


Name: _____

The Chocolate TOUGH

Chapters 1 - 2



1. What was John's one big fault?
 - a. He was mean.
 - b. He didn't listen to his parents.
 - c. He loved candy.
 - d. He wasn't a good student.

2. John loved all candy, but what was his favorite kind?
 - a. cotton candy
 - b. jelly beans
 - c. licorice
 - d. chocolate

3. After John saw the doctor, what did the doctor tell John to do?
 - a. get sleep
 - b. eat less candy
 - c. eat more candy
 - d. stay home

4. What was strange about the coin John found on the street?

5. Describe what John found when he opened his box of chocolates. Explain his reaction.

Name: _____

The Chocolate TOUGH

Chapters 3 - 4



1. How did Mrs. Midas react when Mary told on John for eating the toothpaste?

2. What was strange about John's morning?

a. He was in a good mood.

b. Everything was turning into chocolate.

c. He wanted to go to school.

d. Mary was being a tattletale.

3. What made John's schoolmate think that John had gone crazy?

4. Did Spider like the glove? Why or why not.

5. What did John do to make Susan upset with him?

a. embarrassed her

b. ruined her shoes

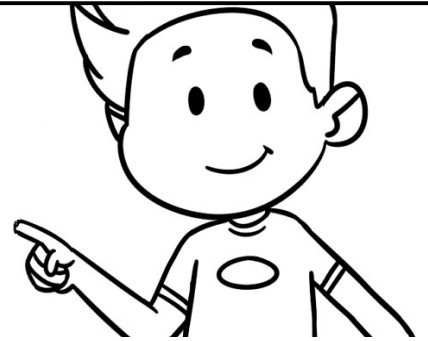
c. made fun of her

d. bit through her coin

Name: _____

The Chocolate TOUGH

Chapters 5 - 6



1. Why did John begin to panic towards the end of his test?
 - a. He was running out of time.
 - b. He didn't know the answers.
 - c. He needed more chocolate.
 - d. His pencil was turning into chocolate.

2. How did Miss Plimsole react when John spoke with her after class?

3. Yes or No. Was Susan ready to forgive John? _____
What from the story makes you think this?

4. What was John going to do to prove to Susan he wasn't lying about his magic power?
 - a. Show her the pencil.
 - b. Put the jump rope in his mouth.
 - c. Eat the rest of the coin.
 - d. Take her to the water fountain.

5. Explain how John was feeling by the end of Chapter 6.

Name: _____

The Chocolate TOUGH

Chapters 7 - 8



1. Explain how John felt about eating sensible things at lunch that day?

2. What did John do in hopes of not turning his food into chocolate? Did it work?

3. What did John notice that he hadn't noticed at breakfast?

- a.** His tongue was brown. **b.** His utensils were turning into chocolate.
c. He was able to taste cherries. **d.** He tasted different kinds of chocolate.

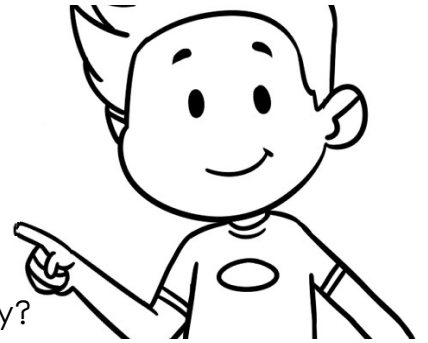
4. How was John's trumpet solo? What made it good or bad?

5. What did the other boy notice about John's trumpet?

- a.** It was new. **b.** It was old.
c. It was chocolate. **d.** It was out of tune.

Name: _____

The
**Chocolate
TOUGH**
Chapters 9 - 10



1. How do you think John really felt about going to Susan's party?

2. What happened to the water, and to John and Susan when John bobbed for apples?

3. What was strange about the candy store when John tried to take his father there?

- | | |
|-------------------------------|-----------------------------------|
| a. It wasn't there. | b. It was closed. |
| c. It sold vegetables. | d. Only John could see it. |

4. What events occurred after Dr. Cranium gave John Dr. Cranium's Elixir?

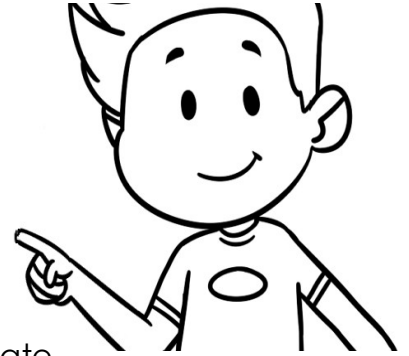
5. What name did Dr. Cranium give to John's sickness?

- | | |
|---------------------------|---------------------------|
| a. Chocolate Fever | b. John's Disease |
| c. Chocolate Touch | d. Cranium Disease |

Name: _____

The Chocolate TOUGH

Chapters 11 - 12



1. What did John accidentally do to his mother?
 - a. made her sick
 - b. turned her into chocolate
 - c. made her angry
 - d. ruined her food

2. When the chocolate store reappeared what was unusual about its windows?

3. Explain what gave John the ability to find the coin.

4. Part of John's sickness was cured when he started to show...
 - a. concern for others.
 - b. fear of the disease.
 - c. chocolatitus
 - d. a dislike for chocolate.

5. Do you think John will eat as much chocolate now? Why or why not?
