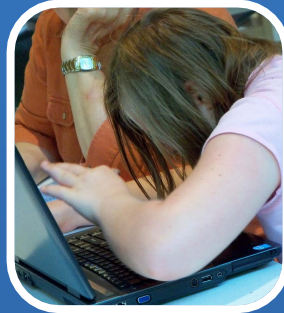


“All Children Can Meet High Standards”

“We are developing the DLM assessment where supporting instruction is in the very design of the assessment, not an afterthought, so that all children can meet high standards.”

Neal Kingston
DLM Project Director



Beliefs

Students with significant cognitive disabilities are a highly diverse group who learn through multiple pathways.

Students with significant cognitive disabilities need to be taught to challenging levels that will prepare them for the future.

A valid and reliable assessment system provides models for creating access and guiding instruction to challenging levels.



DYNAMIC™
LEARNING MAPS

Alternate Assessment





All children participate in state accountability assessments. The Dynamic Learning Maps™ Alternate Assessment System (DLM™) is an instructionally relevant system that supports student learning and measures what students with significant cognitive disabilities know and can do. The system uses the DLM Essential Elements to support the design of individualized experiences for each student by presenting questions and tasks that are appropriate for a student's needs and abilities.



DLM Supports Student Learning

What are DLM Essential Elements?

The DLM Essential Elements are:

- Specific statements of the content and skills students with significant cognitive disabilities are expected to know and be able to do
- Intended to provide links between the general education content standards and grade-specific expectations

What does an “instructionally relevant” assessment mean?

The DLM assessment system:

- Provides a student with similar instructional and assessment experiences
- Provides teachers, parents and other IEP members with information about a student's performance
- Is used to make appropriate instructional decisions

How will my child benefit from participating in the assessment?

The DLM instructionally relevant assessment:

- Enables a student's school to document academic growth
- Supplies the IEP team with information to celebrate successes
- Is used to gauge student progress in relation to state academic standards