



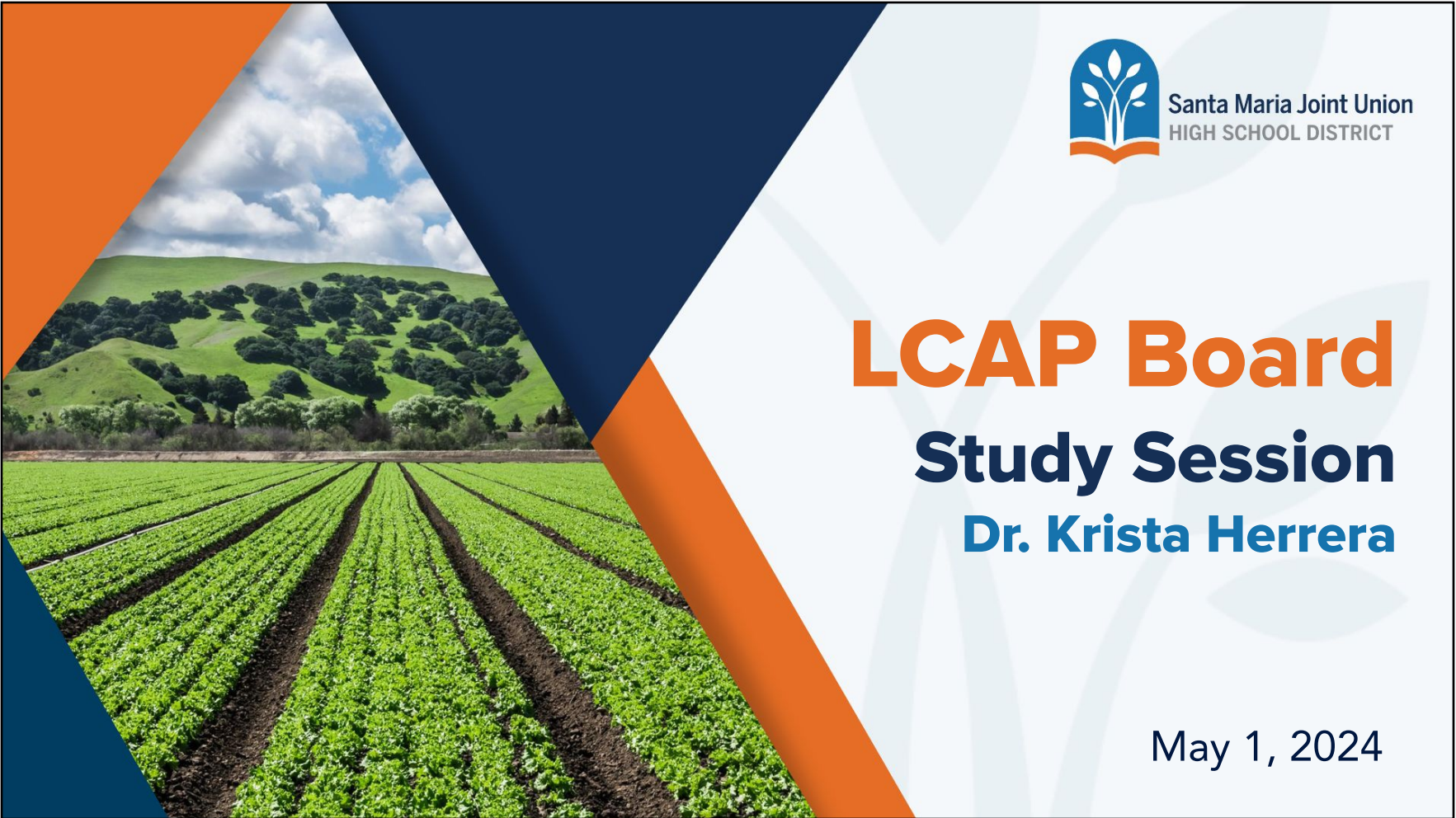
Santa Maria Joint Union
HIGH SCHOOL DISTRICT

LCAP Board

Study Session

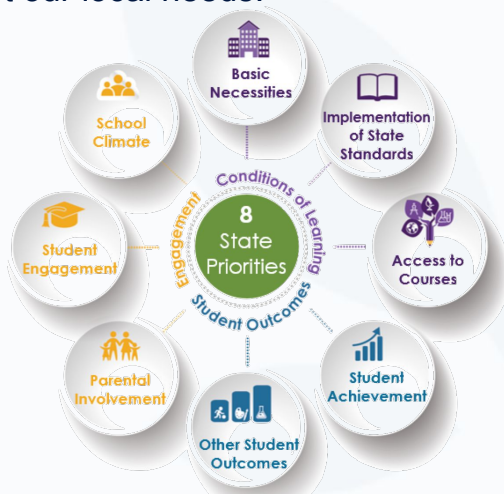
Dr. Krista Herrera

May 1, 2024



What is the LCAP

A three-year district-level plan that describes the goals, actions, services, and expenditures, to support positive student outcomes that address state and local priorities. It is our district's opportunity to share stories of how, what, and why programs and services are selected to meet our local needs.



8 STATE PRIORITIES – LCAP

Conditions of Learning



Basic Services – providing all students access to fully credentialed teachers, instructional materials that align with state standards, and facilities that are maintained in good repair.



Implementation of State Standards – implementing California's academic standards, including the Common Core State Standards in English language arts and math, Next Generation Science Standards, English language development, history social science, visual and performing arts, health education, and physical education standards.



Course Access – student enrollment in a broad course of study that includes all of the subject areas.

Pupil Outcomes



Pupil Achievement – improving student achievement and outcomes along multiple measures, including test scores, English proficiency and college and career preparedness.



Other Pupil Outcomes – includes the measurement of other important student outcomes related to required areas of study, including physical education and the arts.

Engagement



Parental Involvement – districts will seek parent input in decision-making and they will promote parent participation in the educational programs of all students.



Pupil Engagement – measured by school attendance rates, chronic absenteeism rates, dropout rates, and high school graduation rates.



School Climate – measured by student suspension and expulsion rates, and other locally identified means, such as surveys of pupils, parents, and teachers on the sense of school safety and connectedness.

LCAP Goal

1

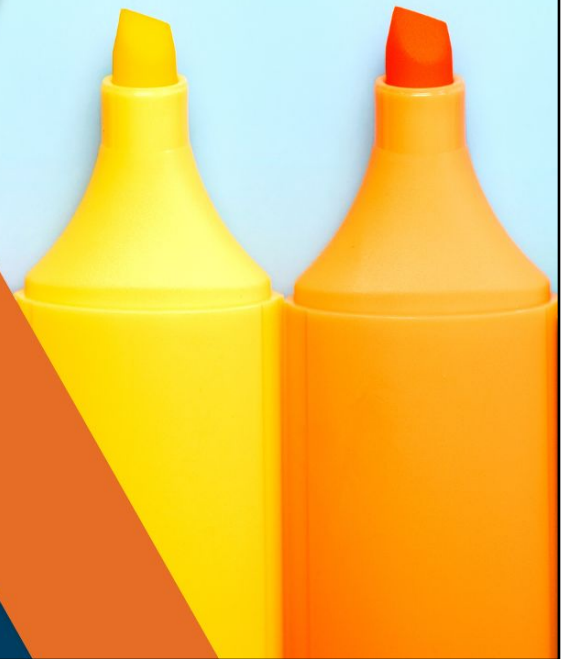
College and Career Readiness

Provide opportunities for every student to be involved and achieve College & Career Readiness through A-G & CTE completion, industry and academic certifications, and concurrent enrollment.



Highlights

- CTE
- Counselors
- AVID
- Co Teaching



Discussion

- What questions might you have?
- What excites you about what you've heard?



LCAP Goal

2

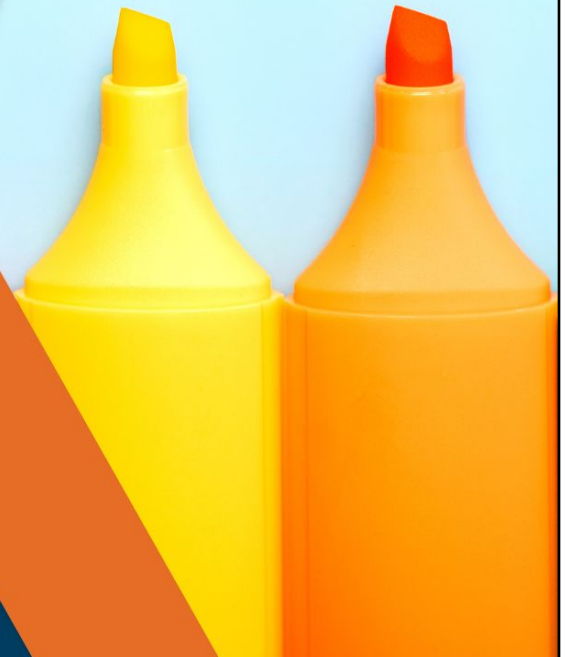
Access

Identify and address any inequities in current school and district systems, policies, and procedures to ensure every student has equitable access to educational programs and services to meet their academic, social, and emotional needs.



Highlights

- 1:1 Laptops and Support
- Instructional Software and Support
 - Access, Engagement, Collaboration
- Interpretation/Translation
- Community Day School/ County Community School



Discussion

- What questions might you have?
- What excites you about what you've heard?



LCAP Goal

3

School Climate

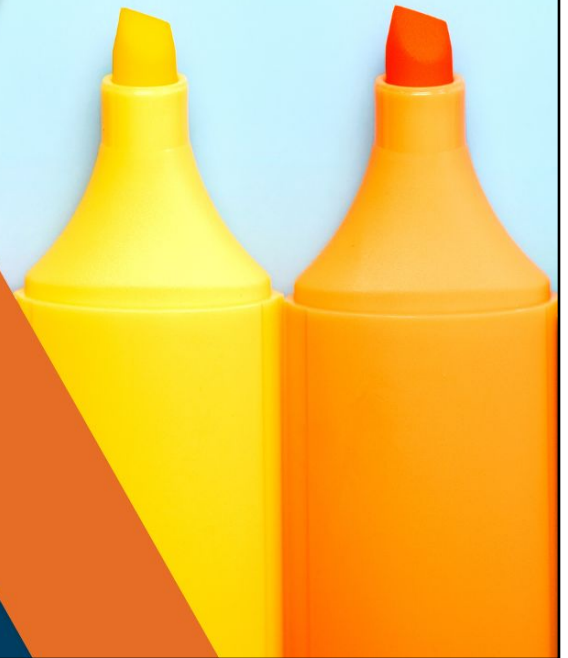
Establish environments that are supportive, secure, and promote well-being. These environments will encourage strong connections, a feeling of belonging, and a positive atmosphere for everyone involved, including staff, educational partners, parents, and students.



**CAREER
PATH
AHEAD**

Highlights

- Security System
 - District upgrade to cloud-based system
- School Safety and Preparedness
- Activities and Athletics



Discussion

- What questions might you have?
- What excites you about what you've heard?



LCAP Goal

4

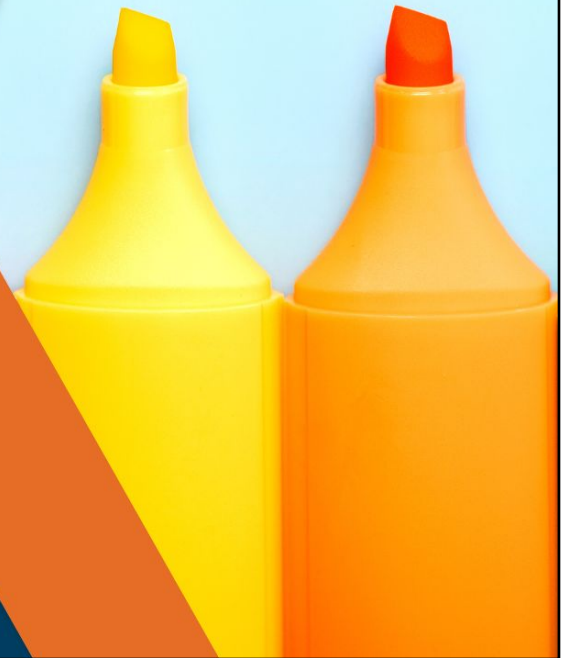
Academic Success

Students will show progress towards meeting or surpassing academic standards in core subjects including English Language Arts and Mathematics. Additionally, English learners will demonstrate advancement in acquiring English language skills.



Highlights

- Newcomer Pathway
- Bilingual Instructional Support
- Migrant and Multilingual Instructional Coaches
- Professional Learning



Discussion

- What questions might you have?
- What excites you about what you've heard?



LCAP Goal

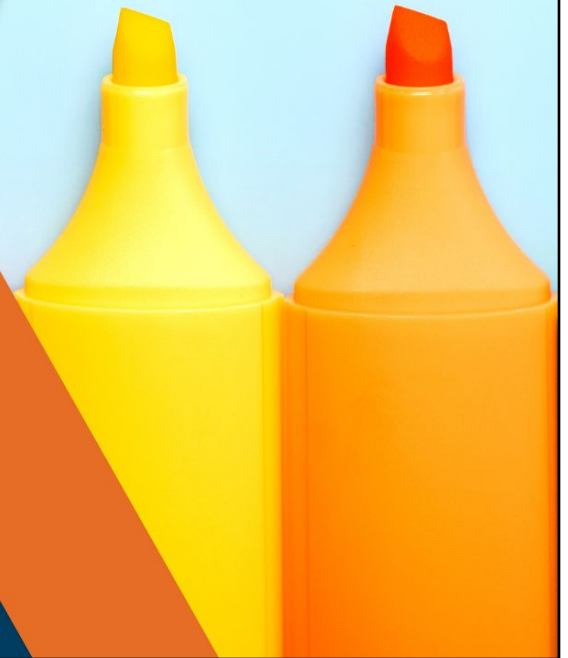
5

**Equity Multiplier:
Increase
resiliency,
engagement, and
academic
achievement for
continuation high
school students.**



Highlights

- Mental Health
- Student and family support
- School engagement



Discussion

- What questions might you have?
- What excites you about what you've heard?



The background is a dark blue rectangle with a subtle, repeating pattern of stylized leaves and stems in a slightly lighter shade of blue. The leaves are simple, rounded shapes, and the stems are thin lines that branch out.

Final Thoughts