

Local Literacy Plan  
for

(Bunkie Elementary Learning Academy/Avoyelles Parish)

(Sharice Sullivan)

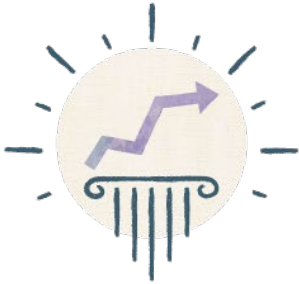
(Karen Tutor)

(June 6, 2023)





## LOUISIANA'S LITERACY PILLARS



**LITERACY GOALS**



**EXPLICIT INSTRUCTION, INTERVENTIONS, & EXTENSIONS**



**ONGOING PROFESSIONAL GROWTH**



**FAMILIES**

A foundation of **EQUITY** across all literacy practices ensures opportunities and access for every learner every day.

### Section 1a: Literacy Vision and Mission Statement

**Guiding Questions:**

1. What is your school/system's focus and mindset around literacy?
2. What is your primary, overarching goal and expected or intended outcomes for your school(s) around literacy?
3. Is your vision and mission statement inclusive of all leaders, teachers, students, and families?

<i>Literacy Vision</i>	BELA will ensure that all students entering 3rd grade will be reading ;on grade level with a focus on phonemic awareness, vocabulary, fluency , comprehension and writing, by partnering with families and all stakeholders
<i>Literacy Mission Statement</i>	<p>BELA Literacy Plan outcomes are to become a data driven school:</p> <ol style="list-style-type: none"> <li>1. Provide high quality Tier 1 Instruction</li> <li>2. Develop an enriching platform where students can experience high levels of success.</li> <li>3. Develop reading stamina for on grade level and above grade level texts.</li> <li>4. To promote a rich culture of reading within the school and across all grade levels.</li> </ol>



**Section 1b: Goals**

Guiding Questions:

1. What are your overall [literacy goals](#)?
2. Are you creating [SMART goals](#) for grade bands, subgroups, diverse learners, and teachers?
  - How are you measuring the performance of birth through grade 12?
  - What subgroups are most in need of literacy intervention?
  - How are you addressing the literacy and language needs of diverse learners?
  - How do you plan to measure teacher performance based on your literacy goals?

<i>Goal 1 (Student-Focused)</i>	By the end of the school year, 75% of students in K- 3 will benchmark on the Dibels Next literacy screener. By the end of the school year 75% of students 4-6 will score basic or above on the 2024 LEAP Assessment. By the end of the school year 70% of the students in Pre K will meet or exceed their benchmark score on letter naming fluency and first sound fluency using Dibels Next.
<i>Goal 2 (Teacher-Focused)</i>	By the end of the school year 100% of teachers in Pre K - 4 , Sped Teachers and paraprofessionals will be trained in the Science of Reading as measured by a certificate of completion in SOR. By the end of the school year in grades PreK - 4, 75% of students will meet growth goals on DIBELS and 4th -6th grade students will meet their growth to mastery goals in ELA
<i>Goal 3 (Program-Focused)</i>	By the end of the year BELA will improve literacy skills using the CKLA curriculum, intervention, Dibels, progress monitoring and Heggerty. Measured through Dibels 8th (BOY, MOY, EOY), progress monitoring, amplify intervention, BOOST, IReady ELA diagnostic (BOY, MOY, EOY).

**Section 1c: Literacy Team**

Guiding Questions:

1. Who will serve on the school/system literacy team?
2. What is the role of each member?
3. What is your plan for conducting regular meetings, including location, time, availability, and topics?
4. How are you monitoring the effectiveness of the plan?



<i>Member</i>	<i>Role</i>
<i>Sharice Sullivan</i>	Principal
<i>Ashley Ducote</i>	Asst. Principal
<i>Dannon Dauzat</i>	Instructional Coach
<a href="#">Lindsey Bertrand</a>	Teacher
<i>Ruby Hawkins</i>	Sped Teacher K-2

### Meeting Schedules

<i>Date &amp; Type of Meeting (Plan Review, Data Analysis, etc.)</i>	<i>Frequency of Meetings (Weekly, Monthly, etc.)</i>	<i>Topic(s)</i>
June 30 2023 ILT Meeting	2 days	Create Literacy Plan
August 2023	1 day Staff Development PD Open House	Discuss Plan with Faculty/Staff Discuss Plan with Parents
August 2023-May 2024	Progress Monitor every 10 days, Monthly Analysis of Data	weekly classroom observation Progress Monitor Data Analysis
August 2023-May 2024	Weekly Classroom Observation	Debrief/Feedback, Teacher Support, Staff Development
September 2023 - May 2024	Monthly	Discuss Professional Development needs from classroom observation, data analysis (DIBELS, Weekly Assessments, iREADY, and Mastery Connect)



August 2023 - May 2024	BOY, MOY, EOY	Evaluate Literacy Plan , Analysis of Data (DIBElS, IReady and Mastery Connect), Revise as Needed
July 2024	2 days	Evaluation of LEAP Scores

**Section 2: Explicit Instruction, Interventions, and Extensions**

**Guiding Questions:**

1. For each specific plan and activity around literacy, what is/are your:
  - action steps?
  - timeline?
  - person(s) responsible?
  - resources?
  - alignment to literacy goal(s)?
  - evidence of success?
2. When implementing literacy curriculum and assessments, how are you ensuring:
  - alignment to current research on foundations of reading and language and literacy?
  - cultural responsiveness?
  - connections across content areas?
3. When utilizing literacy screeners, what are your plans for:
  - deciding which components will be measured in each grade band or subgroup?
  - how often screeners are administered?
  - progress monitoring?
  - screening and supporting students in upper grades effectively?
4. When planning for and providing literacy interventions for struggling readers and writers, are you including specifications for:
  - students with dyslexia?
  - the EL population?
  - special education students?
  - cultural and dialectical sensitivity?

The action plan table on the next page can be used to plan out specific action steps related to literacy goals.



### Action Plan

<i>Goal</i>	<i>Timeline</i>	<i>Action Steps</i>	<i>Person(s) Responsible</i>	<i>Resources</i>	<i>Evidence of Success</i>
1	June 1 - June 30	Review prior year data to establish school system goals.	Data manager and Academics team	Literacy screeners; LEAP scores	Students and subgroups demonstrate growth in year-to-year data.
2. PreK - 6th grade students will use a Tier I curriculum that addresses the components of reading	Aug 2023- May 2024	Use of CKLA, Amplify Instruction, BOOST, Heggerty Programs, and Guidebook	Teachers	DIBELS iREADY Mastery Connect LEAP Scores	Student growth in Dibels, TS Gold, Literacy Benchmarks, and State Assessments
3. Initiate training for teachers and paras	August 2023- May 2024	Implementation of Heggerty Implementation of BOOST (RTI)	Teachers Admin Instructional Coach	Heggerty and BOOST CKLA (Skills, Amplify Instruction, Knowledge)	Heggerty Benchmark assessments progress monitoring every 10 days , DIBELS BOY, MOY and EOY assessments



Science of Reading		Teaching Tier 1 curriculum CKLA			
4. Data Analysis and student goal setting	BOY, MOY, EOY	Benchmark Window Instructional Leadership Team	Teachers Instructional Leadership Team	Mastery Connect iREADY Teacher DIBELS LEAP Scores	Students meeting individual growth targets
5. Students reading on or above grade level in 4-6 grade	August 2023-May 2024	Bridge the Gap and FIRE	Teachers/paras	Heggerty "Bridge the GAP"	Students meeting individual growth targets
6. Students will receive instruction in the usage of grammar and mechanics	August 2023-May 2024	Writings: Guidebook Rubrics LEAP Prep Books	Teachers	LEAP Scores	Students meeting individual growth targets



### Section 3: Ongoing Professional Growth

#### Guiding Questions:

1. On what are you basing your professional development needs? Are you considering:
  - teacher performance data
  - student performance data
  - observation cycles
  - teacher background knowledge and experience levels
2. When planning opportunities for [ongoing professional growth](#) for leaders and teachers, are you including plans for:
  - ongoing training and support?
  - coaching?
  - various types of PD offerings?
  - by whom, when, and how PD will be provided?
  - PD specific to foundations of reading and language and literacy?
  - PD on high-quality interactions (such as CLASS® for birth-grade 2)?
  - monitoring the implementation and effectiveness of professional development?
  - tailoring opportunities to individual needs of teachers?

#### Potential PD Planning

<b>Month/Date</b> <i>(When can PD be scheduled throughout the school year?)</i>	<b>Topics</b> <i>(What topics are most needed and should be covered and/or prioritized?)</i>	<b>Attendees</b> <i>(Who would benefit most from this PD? Consider also who can redeliver to other teachers/faculty.)</i>
August - May	CKLA PD	K-2 Teachers
August - May	Heggerty Training	Pre K - 4 Teachers
August - May	Science of Reading Training	Pre K- 4 Teachers
August - May	Mastery Connect PD	K-6
August - May	Coaching in Literacy	Pre K -6th (ELA teachers)
August - May	Monthly ILT	ILT team members





August - May	Accelerated Reader	All Teachers
August - May	Collaboration and Planning	All Teachers

**Section 4: Family Engagement Around Literacy**

**Guiding Questions:**

1. To improve [family engagement around literacy](#), how are you:
  - including families in focus groups and other discussions with teachers, students, and leaders around:
    - specific programs to address the school’s mission?
    - families’ concerns about literacy achievement?
    - students’ attitudes toward reading and writing?
    - teachers’ beliefs about student literacy and learning?
  - providing ongoing support and communication to families?
  - considering diverse families and their specific needs or challenges in regards to communication, technology, transportation, etc.?
  - using communication methods that accommodate all families?
2. How are you working directly with community partners to:
  - engage families and the community?
  - invest in the literacy of our youth?
  - improve access to resources?
3. What resources and tools are you sharing with families and community partners to enhance literacy?

<i>Month/Date</i>	<i>Activity</i>	<i>Accessibility Opportunities</i>	<i>Community Partners</i>
Fall	Literacy Night	Face to Face meetings and hand-outs	Parents, students, teachers
Fall	Reading Night	Face to Face meetings and hand-outs	Parents, students, teachers
August -May	Accelerated Reading Point Club	assign points and give prizes	teachers, students



Spring	Book Fair	face to face	Parents, students
Spring	Read Across America	Community members come in and read to students	parents, teachers, students, community leaders
Fall	Steve Carter Literacy Tutoring	Letters to parents	teachers, students
Aug- May	Fluency Folders	Red folders that go home each night concentration on fluency and comprehension	students and parents
Fall/Spring	Report Card Night	face to face	teachers, students, and parents
Spring	Testing Night	face to face handout	teachers, student and parents
Aug-May	Dibels letters	hand-outs	students and parents

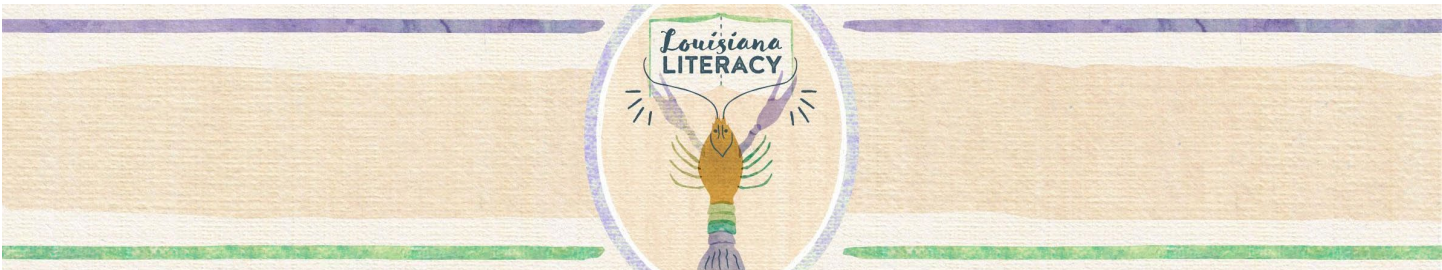
**Section 5: Alignment to other Initiatives**

**Guiding Questions:**

- To successfully implement, communicate, and monitor this literacy plan, what are some other district or school initiatives and plans to which you should be sure to connect? Consider:
  - School Improvement Plan
  - Early childhood programs
  - Cross-curricular connections
  - Community programs
  - Alignment across schools within the system

**Initiative Alignment**

<i>Other Programs/Initiatives</i>	<i>Connecting to Literacy</i>	<i>Plan to Monitor/Evidence of Success</i>
<i>Partner with Bunkie Library</i>	<i>Check out books on reading level</i>	<i>Every other month trips to library</i>
	<i>Align to district</i>	<i>B</i>



	<i>mission/vision plan</i>	



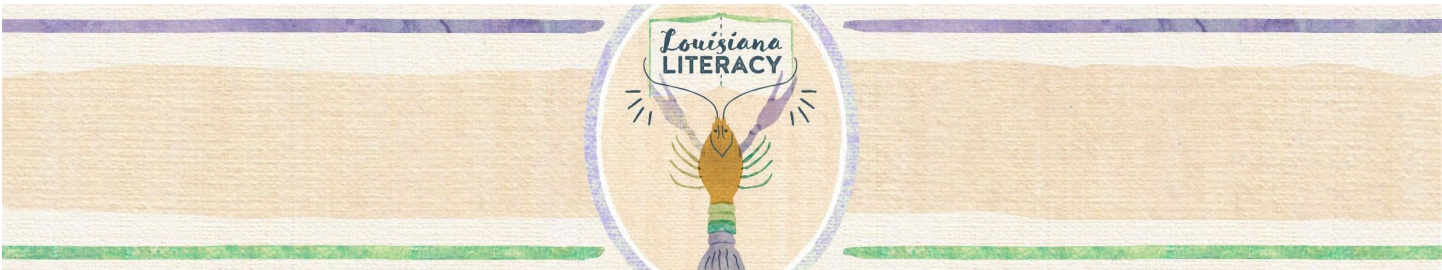
**Section 6: Communicating the Plan**

**Guiding Questions:**

1. What are the implementation expectations for schools?
  - Will schools have school-based literacy teams?
2. How will district-level personnel support schools in meeting those expectations?
3. How will you communicate the plan to families and community members?
4. How will you communicate the progress being made throughout the school year?
5. How will you ensure ongoing monitoring and implementation of this plan at the school-level?
  - Will you hold quarterly meetings?
  - Will you report on progress monitoring of the plan components and goals?

**Communication Plan**

<i>Stakeholder Group</i>	<i>Plan for Communicating</i>	<i>Timeline</i>
<i>Faculty and Staff</i>	<i>Collaboration and Planning, PD</i>	<i>August 2023 - May 2024</i>
<i>Parents and Community</i>	<i>Student Planners Social Media (Facebook and Website) Phone Calls Calendars Flyers Student Progress Center Jcampus Calls Open House Literacy Night Report Card Night LEAP Night</i>	<i>August 2023 - May 2024</i>
<i>Literacy Team</i>	<i>Quarterly in-person meetings to review and revise literacy plan as needed</i>	<i>August 2023 - May 2024</i>




Review the [School System Literacy Roadmap](#) for recommended timelines for action steps to promote literacy.

For additional guidance and resources, visit the [Louisiana Literacy's webpage](#), [Literacy Library](#), or email [louisianaliteracy@la.gov](mailto:louisianaliteracy@la.gov).

*Updated A 2022*