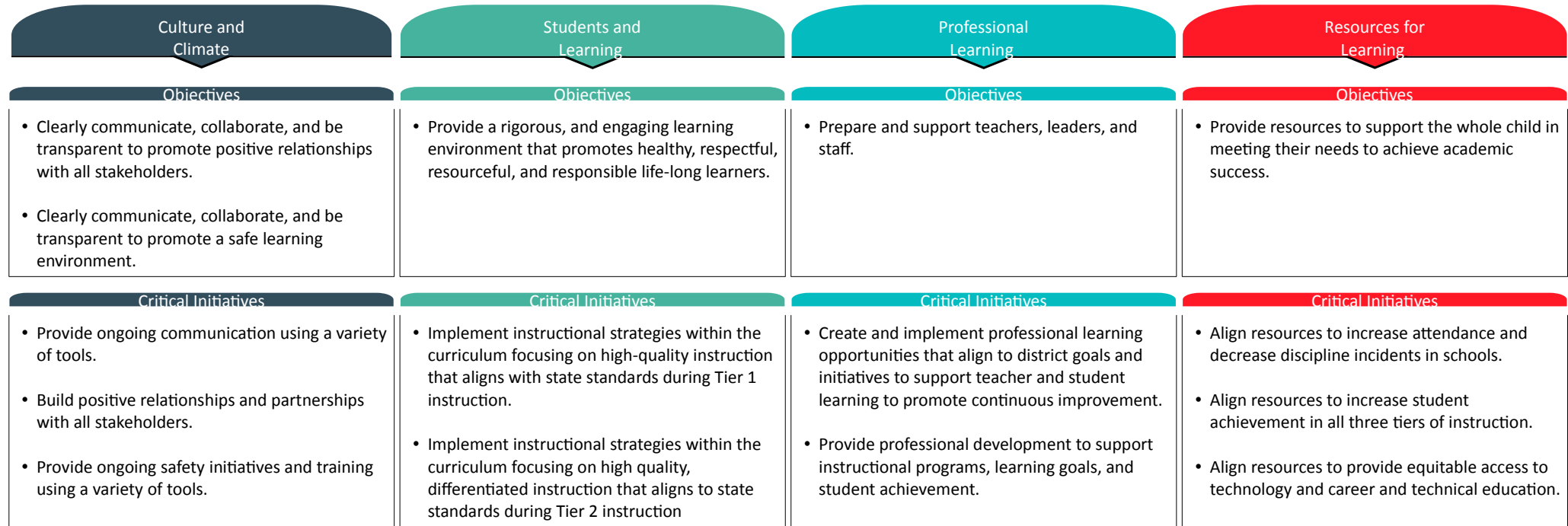
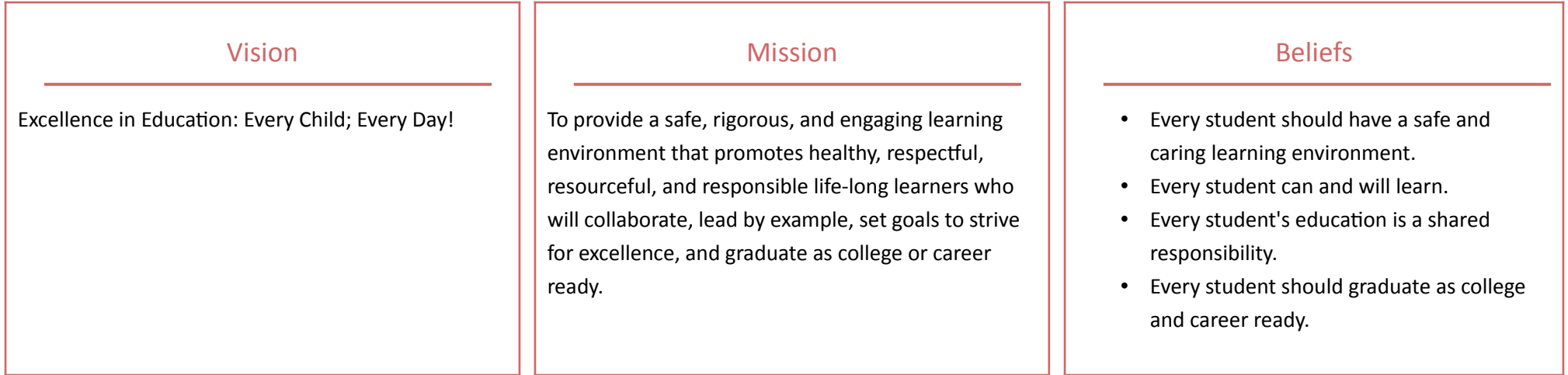


## W. S. Neal High School



Critical Initiatives	Critical Initiatives	Critical Initiatives	Critical Initiatives
	<ul style="list-style-type: none"> <li>Implement instructional strategies within the curriculum focusing on high quality, differentiated instruction that aligns to state standards during Tier 3 instruction.</li> </ul>	<ul style="list-style-type: none"> <li>Recruit and retain teachers, leaders and staff.</li> </ul>	<ul style="list-style-type: none"> <li>Align resources to support social emotional and behavioral needs of all learners.</li> </ul>
Key Measures	Key Measures	Key Measures	Key Measures
<ul style="list-style-type: none"> <li>Newsletters and Communications</li> <li>StreamVu, Social Media, Schoology</li> <li>Schoology Weekly Progress Reports</li> <li>Local School Parent/Community Events</li> <li>Centegix Usage Reports</li> <li>Blocksi</li> <li>School safety plans</li> </ul>	<ul style="list-style-type: none"> <li>Report Card Grades</li> <li>ACT online (prep)</li> <li>Pre-ACT, ACT, ACT WorkKeys, Credentials</li> <li>Use of Lesson Plans and Pacing Guides</li> </ul>	<ul style="list-style-type: none"> <li>Pre-ACT, ACT, ACT WorkKeys, Credentials</li> <li>Performance Matters Data</li> <li>PD Logs (True North Logic reports)</li> <li>PD Schedule</li> <li>Job Fair, Mentoring, and PD</li> </ul>	<ul style="list-style-type: none"> <li>Performance Matters and PowerSchool Reporting</li> <li>Pre-ACT, ACT, ACT WorkKeys, Credentials</li> <li>Performance Matters Data</li> <li>Library Circulation</li> <li>Technology Inventory</li> <li>Nearpod, Schoology</li> <li>Master Schedules</li> <li>Credentialing</li> <li>Rhithm</li> <li>Social Workers, SRO, Contracted Services</li> <li>Mentor/Mentee</li> <li>Kudor use and reporting</li> </ul>