

# PRE-KINDERGARTEN

# Parent Handbook

---

SMITH COUNTY SCHOOL DISTRICT



2024-  
2025



# SMITH COUNTY SCHOOL DISTRICT

## **MISSION STATEMENT**

---

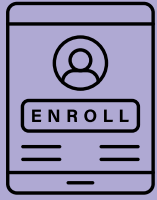
The mission of the Smith County School District is to provide high quality education and create a culture of care and support where every student feels valued, respected, and empowered to thrive academically and socially. Our goal is to prepare our students for the future through authentic, personalized, competency-based, inclusive and equitable experiences.

# SCSD & MDE PRE-K GOALS

---

- **improve their self-concept**
- **increase their intellectual growth**
- **enlarge their understanding of the world, people, experiences, ideas**
- **increase competencies and skills in oral language, literacy, writing, listening, and thinking**
- **increase their competencies and skills in mathematical reasoning and scientific exploration**
- **increase their skills involved in physical coordination and gross and fine motor skills**
- **increase their competence in dealing with emotions, feelings, and social situations**
- **increase their self-direction and independence**
- **develop cooperative, trusting relationships**
- **develop their natural curiosity and creative potential; and**
- **develop a love of learning**





# ENROLLMENT

---

## Requirements for Voluntary Enrollment

- A child is eligible for a three-year-old program if they reach three years of age on or before September 1. A child is eligible for enrollment in a four-year-old program if they reach four years of age on or before September 1 st .
- Required Documentation: A birth certificate and immunization record (Form 121) are required for all pre-kindergarten children and shall be presented to the proper school authority. If the pre-kindergarten (three- and/or four-year-old) program is located in a public school setting, the information in Section 1 of the Mississippi Cumulative Folders and Permanent Records document must be followed (Mississippi Code Ann. §37-15-1).
- Child must be completely potty-trained

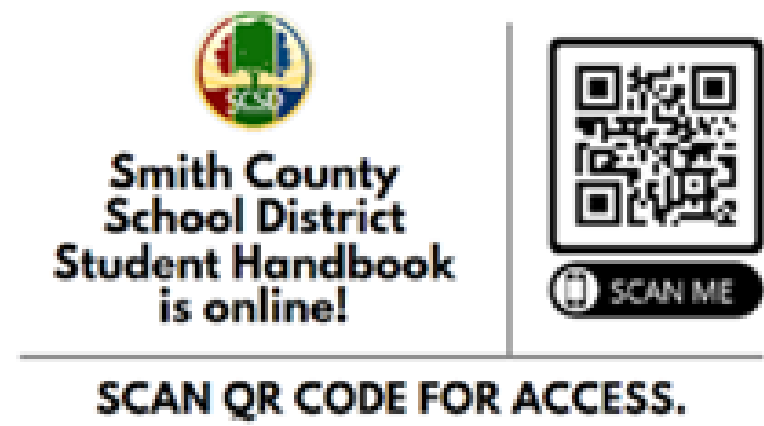
# Discipline

---

**This is an extension of the SCSD Student Handbook.**

All pre-K students will be required to follow all rules and policies in the SCSD Student Handbook. Non-compliance of the rules and policies outlined in the SCSD Student Handbook may result in dismissal from the program.

The SCSD Student handbook can be found:



<https://www.smithcountyschools.net/sys/content/newspost/2d2251f0d83448a28db536ad9f781a25>

# Attendance

---

Excessive absenteeism may result in dismissal from the program.

# TRANSPORTATION

---

**PRE-KINDERGARTEN STUDENTS MUST BE TRANSPORTED TO AND FROM SCHOOL BY A PARENT OR LEGAL GUARDIAN**

**NO PRE-KINDERGARTEN STUDENT IS ALLOWED TO BE TRANSPORTED BY A BUS. FAILURE TO ADHERE TO THIS PROTOCOL WILL RESULT IN EXPULSION FROM THE SCSD PRE-K PROGRAM.**



# FAMILY ENGAGEMENT

---



## Collaboration



- THREE MANDATORY MEETINGS TO DISCUSS CHILD'S PROGRESS
- FIRST PARENT CONFERENCE: Information gathering session from the parent.
- SECOND PARENT CONFERENCE (WINTER): Consist of a progress update to the parent. If documented attempts to meet with parents or other responsible persons fail, telephone conferences can be substituted.
- THIRD PARENT CONFERENCE (SPRING): Consist of a progress update to the parent



- Volunteers are not in the classroom without a teacher or assistant teacher present and are not used to meet the minimum adult-to-child ratio.
- Volunteers that serve in a school more than 120 hours per school year participate in an orientation session, sign a confidentiality agreement, and consent to a background check that is conducted by the district.

# Pre-K Curriculum

---



Pre-kindergarten programs use a research- and evidence-based comprehensive curriculum that is designed to prepare children to be ready for kindergarten, with emphasis in early literacy, and is aligned with the Mississippi Early Learning Standards for Classrooms Serving Three-Year-Old Children and the Mississippi Early Learning Standards for Classrooms Serving Four-Year-Old Children. Mississippi Code Annotated § 27-103-159 defines “evidence-based program” as “a program or practice that has had multiple site random controlled trials across heterogeneous populations demonstrating that the program is effective for the population.” Additionally, the curriculum contains thematic units of activities and ideas designed to provide children the opportunities and experiences needed to master the performance standards in the Mississippi Early Learning Standards for Classrooms Serving Three-Year-Old Children and the Mississippi Early Learning Standards for Classrooms Serving Four-Year-Old Children. Visit [www.mdek12.org/EC](http://www.mdek12.org/EC) for a current listing of approved curricula. Lesson planning documents should reflect Early Learning Standards that are targeted through each lesson and learning center activities that are used throughout the thematic unit.

***The Mississippi Early Learning Standards for Classrooms Serving Four-Year-Old Children is organized according to the following areas:***

- English Language Arts (ELA)
- Mathematics
- Approaches to Learning
- Social and Emotional Development
- Science
- Physical Development
- Social Studies
- Creative Expression

The English Language Arts and Mathematics Standards were developed to align with research-based best practices. The Approaches to Learning, Social and Emotional Development, Science, Physical Development, Social Studies and Creative Expression Standards were developed based on National Standards for Early Childhood Education.





# PRE-KINDERGARTEN ASSESSMENT

---

## KINDERGARTEN READINESS ASSESSMENT (KRA)

*KRA is a state assessment taken at the beginning & end of year to measure skills and determine the rate of readiness.*

- Our goal is for students to attain a scale score of 498 or grow 98 points
- Your child's teacher will discuss your child's score with you in a private over the phone meeting or conference

# This is an extension of the SCSD Student Handbook.

All pre-K students will be required to follow all rules and policies in the SCSD Student Handbook.

## 2024-2025 School Calendar

Smith County School District

212 Sylvarena Ave.  
601-782-4296  
Raleigh, MS 39153

July 29 - 31 Professional Development Days  
 Aug 1 First Day of School for Students  
 Sep 2 Labor Day  
 Oct 3 End of 1st Term  
 Oct 14-15 Fall Break - No School  
 Oct 15 Professional Development Day  
 Nov 25-29 Thanksgiving Break  
 Dec 16 End of 2nd Term  
 Dec 18- Jan 3 Winter break  
 Jan 6 Professional Development Day  
 Jan 20 Martin Luther King, Jr. Day  
 Feb 17 Professional Development Day  
 March 14 End of 3rd Term  
 March 17-21 Spring Break/ weather make-up  
 April 18 Good Friday  
 April 21 Good Monday/ weather make-up day  
 May 23 End of 4th Term



**Category of Events**

Progress Reports Sept 4th  
 Nov 12th  
 Feb 6th  
 April 28th

Report Cards Oct. 10th  
 Jan. 9th  
 March 27th  
 May 28th

Graduation Dates May 15th - 16th

July 2024						
S	M	T	W	T	F	S
	1	2	3	4	5	6
7	8	9	10	11	12	13
14	15	16	17	18	19	20
21	22	23	24	25	26	27
28	29	30	31			

August 2024						
S	M	T	W	T	F	S
				1	2	3
4	5	6	7	8	9	10
11	12	13	14	15	16	17
18	19	20	21	22	23	24
25	26	27	28	29	30	31

September 2024						
S	M	T	W	T	F	S
1	2	3	4	5	6	7
8	9	10	11	12	13	14
15	16	17	18	19	20	21
22	23	24	25	26	27	28
29	30					

October 2024						
S	M	T	W	T	F	S
		1	2	3	4	5
6	7	8	9	10	11	12
13	14	15	16	17	18	19
20	21	22	23	24	25	26
27	28	29	30	31		

November 2024						
S	M	T	W	T	F	S
					1	2
3	4	5	6	7	8	9
10	11	12	13	14	15	16
17	18	19	20	21	22	23
24	25	26	27	28	29	30

December 2024						
S	M	T	W	T	F	S
1	2	3	4	5	6	7
8	9	10	11	12	13	14
15	16	17	18	19	20	21
22	23	24	25	26	27	28
29	30	31				

January 2025						
S	M	T	W	T	F	S
			1	2	3	4
5	6	7	8	9	10	11
12	13	14	15	16	17	18
19	20	21	22	23	24	25
26	27	28	29	30	31	

February 2025						
S	M	T	W	T	F	S
						1
2	3	4	5	6	7	8
9	10	11	12	13	14	15
16	17	18	19	20	21	22
23	24	25	26	27	28	

March 2025						
S	M	T	W	T	F	S
						1
2	3	4	5	6	7	8
9	10	11	12	13	14	15
16	17	18	19	20	21	22
23	24	25	26	27	28	29
30	31					

April 2025						
S	M	T	W	T	F	S
		1	2	3	4	5
6	7	8	9	10	11	12
13	14	15	16	17	18	19
20	21	22	23	24	25	26
27	28	29	30			

May 2025						
S	M	T	W	T	F	S
					1	2
3	4	5	6	7	8	9
10	11	12	13	14	15	16
17	18	19	20	21	22	23
24	25	26	27	28	29	30
31						

June 2025						
S	M	T	W	T	F	S
1	2	3	4	5	6	7
8	9	10	11	12	13	14
15	16	17	18	19	20	21
22	23	24	25	26	27	28
29	30					

**Category of Events**

School Closed

Progress Report

**Category of Events**

EP Employee Planning (no school for students)

Report Cards

9 Wks Exams

**Category of Events**

60% Day

First & Last Day of School