



# Get Pumped Up for Success!

---

Grades 1–2



# What We Will Cover



Things to Know



What to Expect



Introduction Videos



Tips



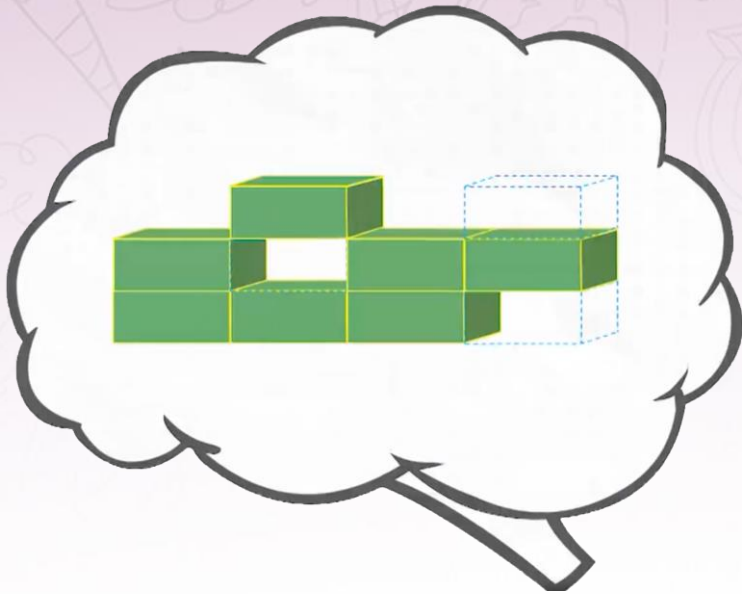
Let's Remember



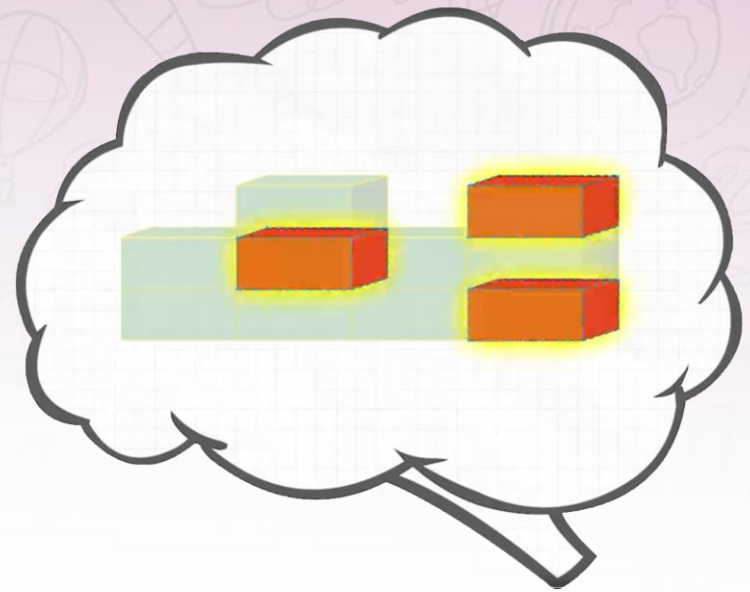
A blue cartoon character with a wide, toothy grin and dark sunglasses is positioned in the lower-left corner. A large, white speech bubble with a black outline extends from the character's mouth towards the upper-right. The background is a light purple color with a repeating pattern of various icons including a smiley face, a baseball, a mushroom, a number 1, a pizza slice, a hot air balloon, a pencil, a sun, an apple, a peace sign, and the word 'BOOM'.

***“Why are we taking the  
i-Ready Diagnostic?”***

# Remember, the Diagnostic Is Important Because It Helps You and Your Teachers . . .



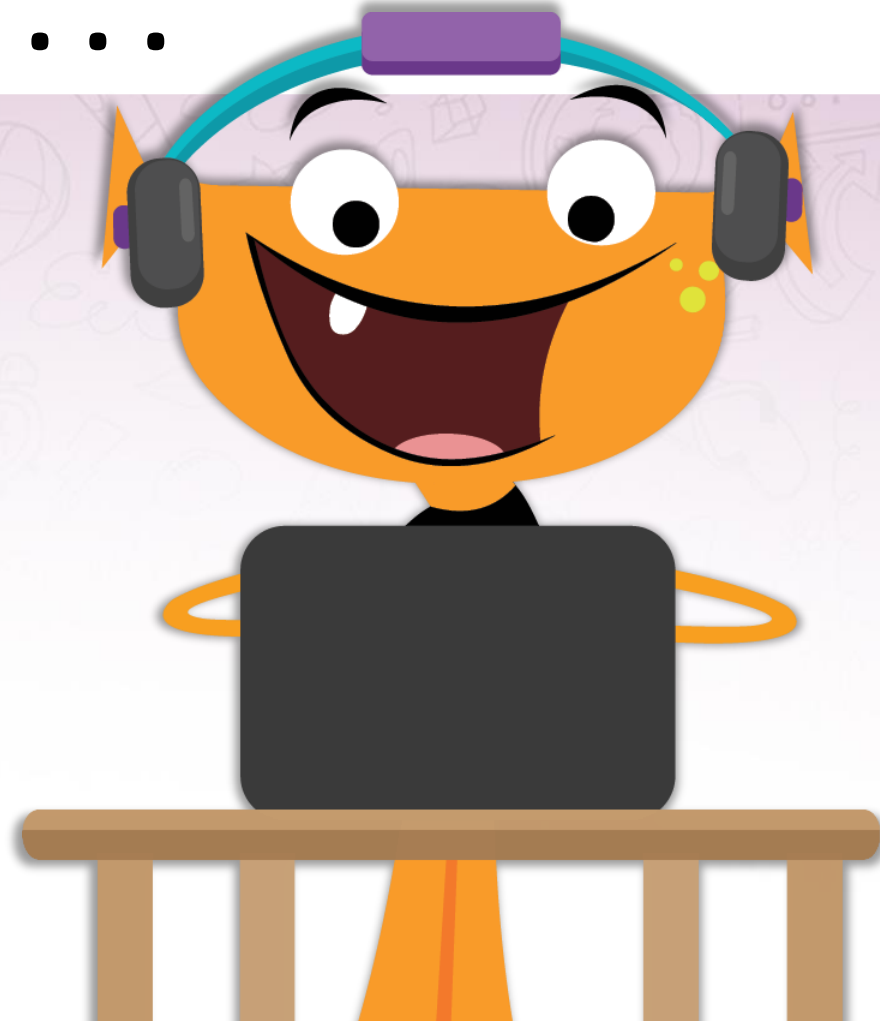
Understand what you  
**already know**



and what you  
**need to learn**

# Remember, the Diagnostic Is Important Because It Helps You and Your Teachers . . .

Make the best use of  
**your learning time**





# Remember, the Diagnostic Is Important Because It Helps You and Your Teachers . . .

**Show what you know!**

Try your best so you can show what you've learned.



# Online Lessons



If you try your best on the Diagnostic, lessons will **match what you need to learn.**

# How does the Diagnostic work?

*i-Ready* is an **adaptive test**. This means the questions change based on your answers.

**Some questions will be . . .**





# What should you do?



- Remember **this test is adaptive!** You should try your best, but know that you'll get questions you don't know how to answer.

# What should you do?



- **Try your best.**  
Do not rush, but do not spend too much time on any one question.



# What should you do?

- You will see questions **you won't know how to answer** because you haven't learned them yet. That is okay! **Choose the best answer** and move on.



Too Hard

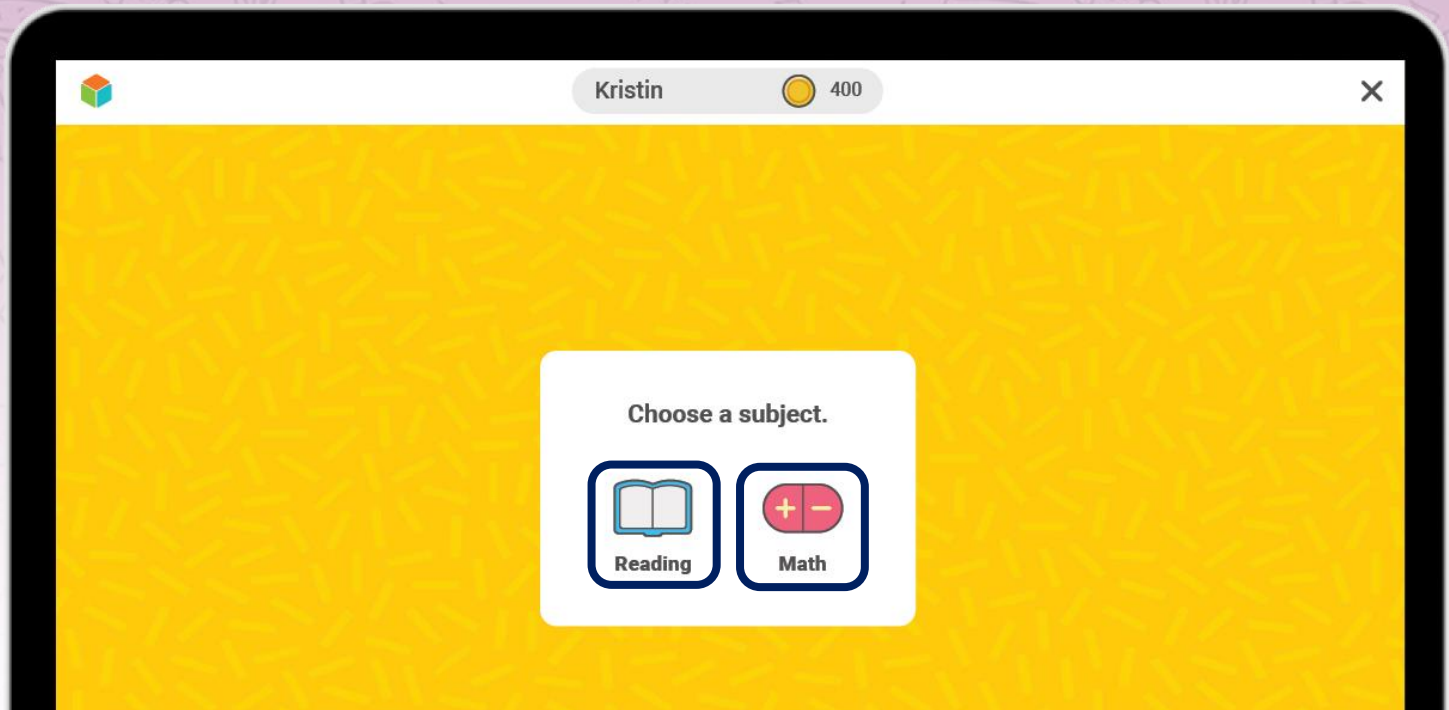


Too Easy



Just Right

# Once you log in, you will see this:



**Select the subject** your teacher tells you.

# Next, you will see a page like this:





# Next, you will:



**Watch a video.**

# Next, you will:



**Watch a video.**

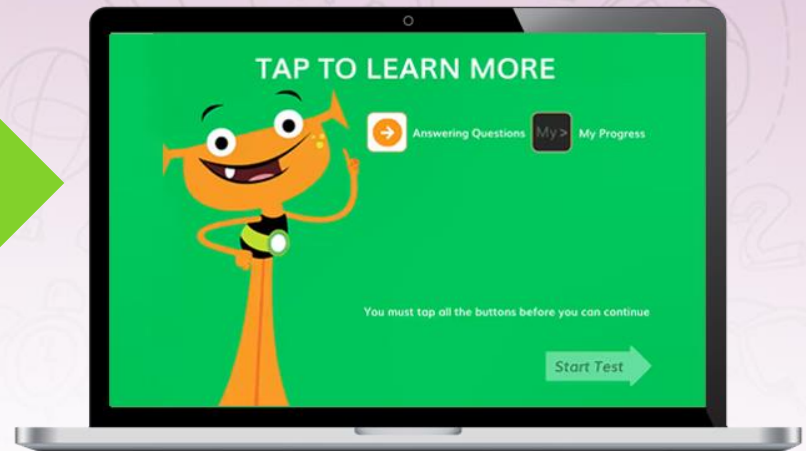


**Click on each button  
to watch a video  
about each tool.**

# Next, you will:



**Watch a video.**

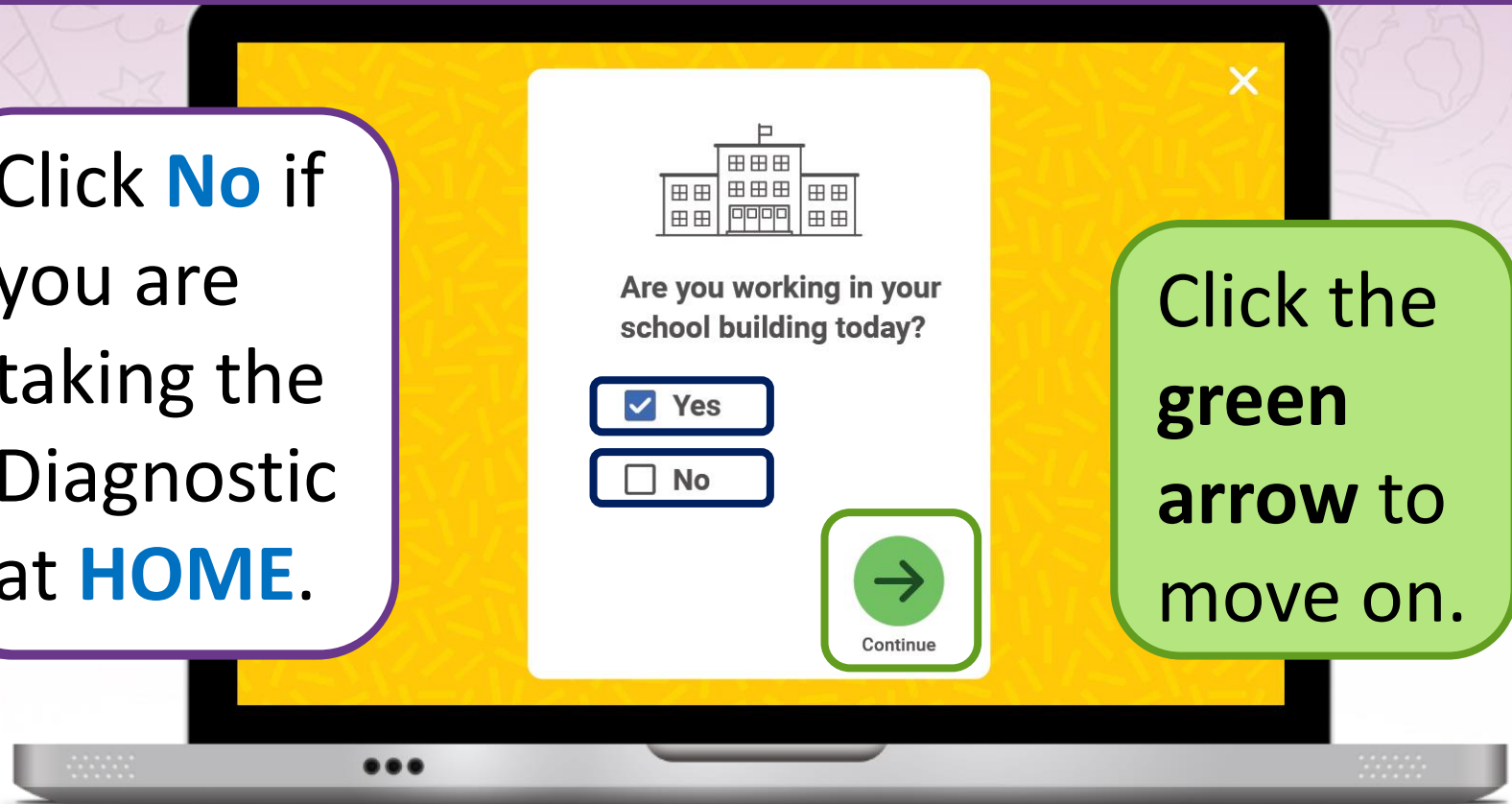


You must **click on all of them** before you can **press start**.

# Student Survey

Once you **START** or **RESUME** your Diagnostic, you will see this question pop up on your screen:

Click **No** if you are taking the Diagnostic at **HOME**.



Click the **green arrow** to move on.

# Introductory Demo Videos

You will get to try this on your own!

**MATH**



**READING**





# Helpful Tips



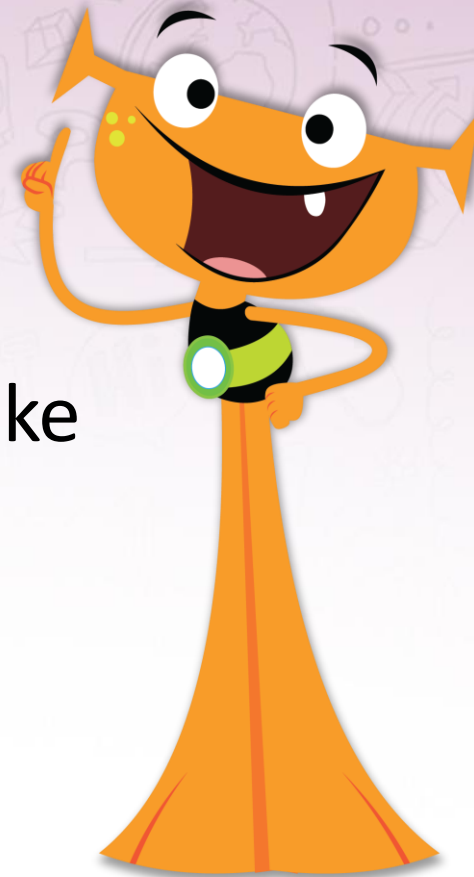
Take your time and **do not rush**.



Read each question and answer choice **carefully**.



**Try your best!** Remember: Just like when we are at school, your teacher and family cannot help!



# Helpful Tips



For Math—**Show your work.**



For Reading—**Read each passage carefully.**



**Check your work.**

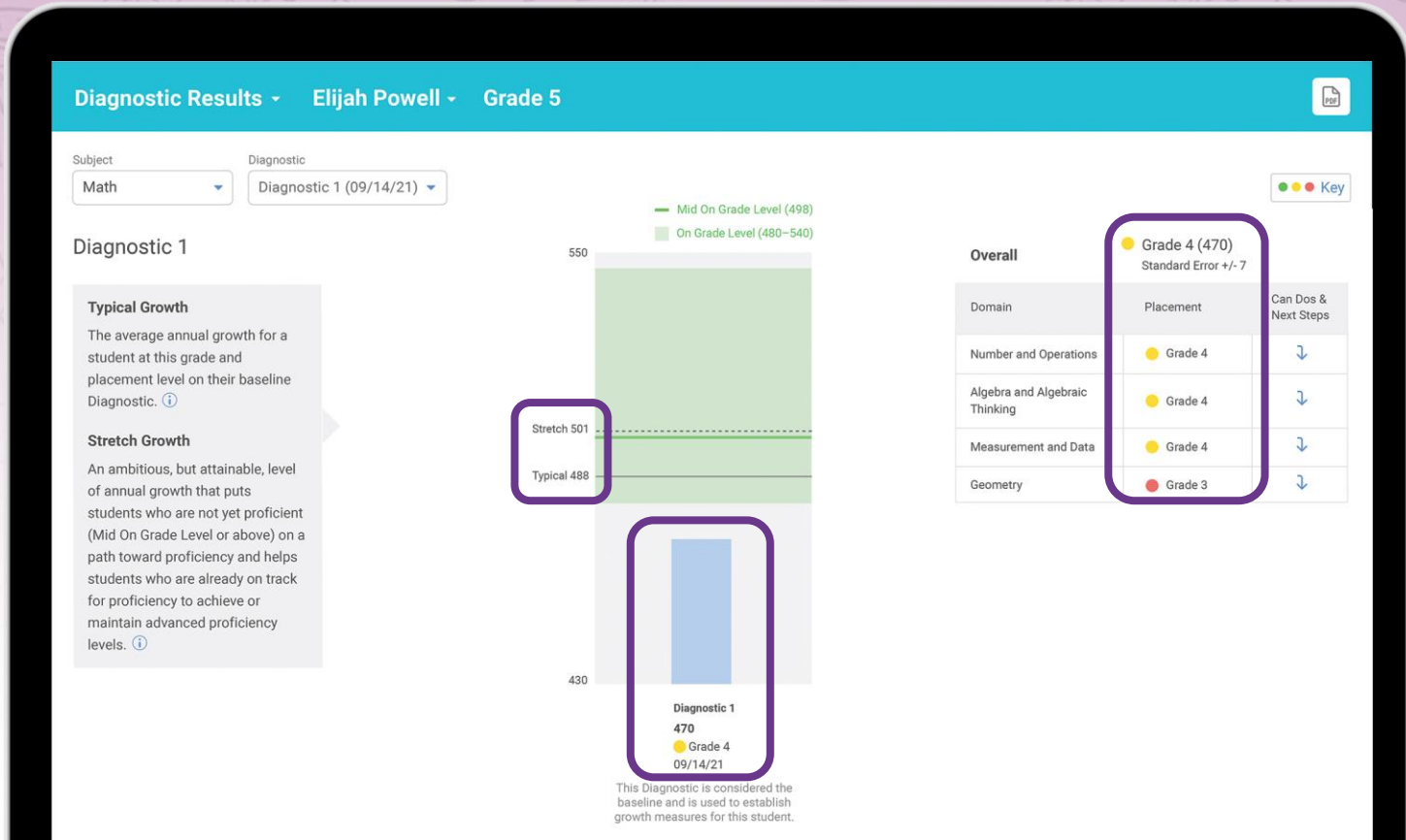


# Our Plan

After the Diagnostic, *i-Ready* creates a special report for you and your family.



# Our Plan



After the Diagnostic, we can review your results and goals.

# Our Incentives

- Class incentives
- Individual incentives





# Reflection

To do my best on *i-Ready*, I will . . .



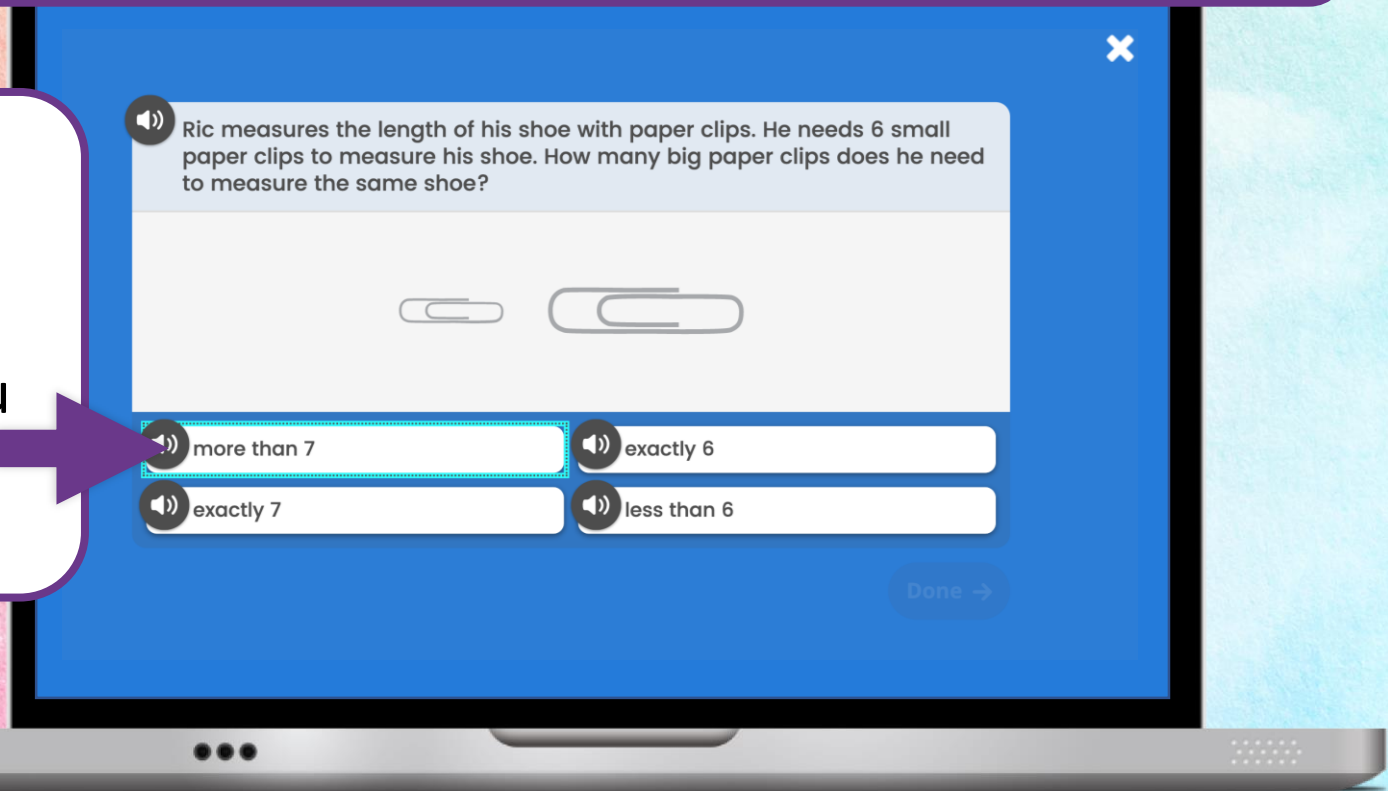
# You Will Rock It!



# Keyboard Navigation

**How:** Using specific keyboard selections:  
Tab, Shift + Tab, and Enter or Space

A box will appear showing where you are on the screen.





# Audio Support

**How:** Using the speaker icon, wherever it appears



**Josh**

Josh plays the piano. He hits the keys with his fingers.



**Sue**

Sue plays the guitar. She plucks the strings with her fingers.



What do Josh and Sue BOTH use to play?



They both use fingers.



They both use strings.



They both use keys.

Done →

# Closed Captioning

**How:** Using the CC box in the bottom left corner of the screen

Clicking the CC box allows you to view the text on screen.

