

Elmore County ARP Homeless II 2022 Revision: 2 Status: ALSDE Homeless Federal Programs Director Approved
 Wednesday, December 28, 2022 5:00 PM
 Allocations

	ARP-Homeless-II
Original Allocation	58,732.00 ▲
Incoming Carryover	0.00
Outgoing Carryover	0.00
Re-Allocated Funds	0.00
Additional Funds	0.00
Release Funds	0.00
Consortium	0.00
Forfeited Funds	0.00
Total Allocation	58,732.00
Adjusted Allocation	58,732.00
Budgeted	58,732.00

Elmore County ARP Homeless II 2022 Revision: 2 Status: ALSDE Homeless Federal Programs Director Approved
Wednesday, December 28, 2022 5:00 PM
LEA Superintendent Assurances Confirmation

LEA Superintendent Assurances Confirmation

Indicates LEA Superintendent Approval based on Assurances.

Homeless Assurances

- In reviewing and revising such policies, consideration shall be given to issues concerning transportation, immunization, residency, birth certificates, school records and other documentation, and guardianship.
- Policies and procedures will be reviewed and revised, if necessary, to ensure barriers to the enrollment of homeless children and youth have been eliminated.
- If the homeless child or youth's living arrangements in the area served by the LEA of origin terminate and the child or youth, though continuing his or her education in the school of origin, begins living in an area served by another LEA, the LEA in which the homeless child or youth is living shall agree upon a method to apportion the responsibility and costs for providing the child with transportation to and from the school of origin. If the LEAs are unable to agree upon such method, the responsibility and costs for transportation shall be shared equally.
- If the homeless child or youth continues to live in the area served by the local educational agency in which the school of origin is located, the child or youth's transportation to and from the school of origin shall be provided or arranged by the LEA in which the school of origin is located.
- Policies and practices will be adopted to ensure that transportation is provided, at the request of the parent or guardian (or in the case of an unaccompanied youth, the liaison), to and from the school or origin, as determined in Section 722(g)(3)(A), in accordance with the following, as applicable:
- An appropriate staff person will be designated, who may also be a coordinator for other federal programs, as an LEA liaison for homeless children and youth to carry out the duties described in Section 722(g).
- Policies and practices will be adopted to ensure that homeless children and youth are not stigmatized or segregated on the basis of their status as homeless.

The Local Education Agency (LEA) assures that:

Elmore County ARP Homeless II 2022 Revision: 2 Status: ALSDE Homeless Federal Programs Director Approved
Wednesday, December 28, 2022 5:00 PM
Substantially Approved Dates

Grant	Substantially Approved Date
ARP Homeless II	8/26/2022

	Salaries (010 - 199)	Employee Benefits (200 - 299)	Purchased Services (300 - 399)	Materials + Supplies (400 - 499)	Capital Outlay (500 - 599)	Other Objects (600 - 899)	Indirect Costs (910)	Fund Transfers (920 - 929)	Other Fund Uses (931 - 999)	Total
Instruction (1100)	0.00	0.00	0.00	9,000.00		4,000.00				13,000.00
Attendance Services (2110)	0.00	0.00	0.00	0.00		0.00				0.00
Guidance and Counseling Services (2120)	0.00	0.00	0.00	0.00		0.00				0.00
Testing Services (2130)	0.00	0.00	0.00	0.00		0.00				0.00
Health Services (2140)	0.00	0.00	2,500.00	0.00		0.00				2,500.00
Social Services (2150)	0.00	0.00	0.00	0.00		0.00				0.00
Work Study Services (2160)										0.00
Psychological Services (2170)	0.00	0.00	0.00	0.00		0.00				0.00
Speech Pathology and Audiology Services (2180)	0.00	0.00	0.00	0.00		0.00				0.00
Other Student Support Services (2190)	0.00	0.00	18,377.29	12,032.00		0.00	0.00			30,409.29
Instructional Improvement and Curriculum Development	0.00	0.00	0.00	0.00		0.00	0.00			0.00
Instructional Staff Development Services (2215)	0.00	0.00	7,000.00	1,200.00		0.00	0.00			8,200.00
Educational Media Services (2220)			0.00	0.00		0.00	0.00			0.00
Other Instructional Staff Services (2290)	0.00	0.00	0.00	0.00		0.00	0.00			0.00
School Administrative (2300-2399)	0.00	0.00	0.00	0.00		0.00	0.00			0.00
	Salaries (010 - 199)	Employee Benefits (200 - 299)	Purchased Services (300 - 399)	Materials + Supplies (400 - 499)	Capital Outlay (500 - 599)	Other Objects (600 - 899)	Indirect Costs (910)	Fund Transfers (920 - 929)	Other Fund Uses (931 - 999)	Total
Security Services (3100)										0.00
Operations and Maintenance				0.00	0.00					0.00

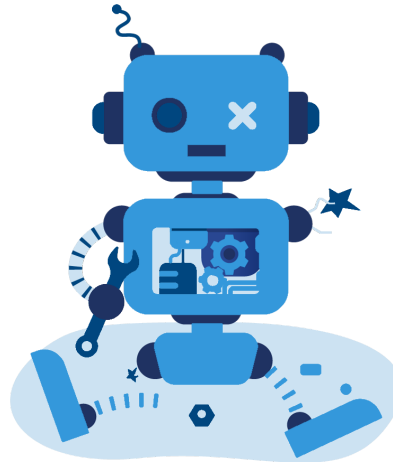
(3200-3900)																				(3200-3900)
Student Transportation (4100-4199)	0.00	0.00	0.00	3,000.00	0.00	0.00	0.00	0.00	0.00	0.00	0.00	0.00	0.00	0.00	0.00	0.00	0.00	0.00	0.00	Student Transportation (4100-4199)
Food Services (4200-4299)																				Food Services (4200-4299)
General Administrative (6000-6999)	0.00	0.00	0.00	0.00	0.00	0.00	0.00	0.00	0.00	0.00	0.00	0.00	0.00	0.00	0.00	0.00	0.00	0.00	0.00	General Administrative (6000-6999)
Capital Outlay - Real Property (7000-7999)																				Capital Outlay - Real Property (7000-7999)
Debt Service - Long Term (8000-8999)																				Debt Service - Long Term (8000-8999)
Adult Education (9110)	0.00	0.00	0.00	0.00	0.00	0.00	0.00	0.00	0.00	0.00	0.00	0.00	0.00	0.00	0.00	0.00	0.00	0.00	0.00	Adult Education (9110)
Community Education (9120)	0.00	0.00	0.00	0.00	0.00	0.00	0.00	0.00	0.00	0.00	0.00	0.00	0.00	0.00	0.00	0.00	0.00	0.00	0.00	Community Education (9120)
Extended Day/Dependent Care (9130)	0.00	0.00	0.00	0.00	0.00	0.00	0.00	0.00	0.00	0.00	0.00	0.00	0.00	0.00	0.00	0.00	0.00	0.00	0.00	Extended Day/Dependent Care (9130)
Preschool (9140)	0.00	0.00	0.00	0.00	0.00	0.00	0.00	0.00	0.00	0.00	0.00	0.00	0.00	0.00	0.00	0.00	0.00	0.00	0.00	Preschool (9140)
Other Adult/Continuing Education Programs (9150-9199)																				Other Adult/Continuing Education Programs (9150-9199)
NonPublic School Programs (9200)	0.00	0.00	0.00	0.00	0.00	0.00	0.00	0.00	0.00	0.00	0.00	0.00	0.00	0.00	0.00	0.00	0.00	0.00	0.00	NonPublic School Programs (9200)
Community Services (9300-9399)	0.00	0.00	0.00	0.00	0.00	0.00	0.00	0.00	0.00	0.00	0.00	0.00	0.00	0.00	0.00	0.00	0.00	0.00	0.00	Community Services (9300-9399)
Total	0.00	0.00	0.00	30,877.29	22,232.00	0.00	4,000.00	1,622.71	0.00	0.00	0.00	58,732.00	0.00	0.00	0.00	0.00	0.00	0.00	0.00	Total
																			Adjusted Allocation	
																			Remaining	



eGap Error





- [Home](#)
- [Search](#)
- [Document Library](#)
- [Contact ALSDE](#)
- [Help](#)

Oops! An unexpected error has occurred.



Please try again and if you continue to get this message contact your system administrator.

* = Required

Related Documents		
	Type	Document
 	*Program Evaluation Results	Homeless Program Planning 2021-2022
 	*Program Evaluation	Homeless Program Evaluation 2021-2022