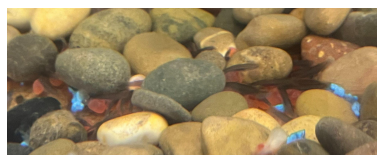


## Salmon Project

We have baby fish! Our salmon eggs are hatching! We are all so excited and enjoy watching the salmon babies hatch. We received our salmon eggs from the Cowlitz Fish Hatchery. We have been monitoring the pH, dissolved oxygen, and nitrate levels and making observations. We are eager to watch the salmon grow and then release our young fish this spring!



## 100th Day of School

Monday, February 13th is the 100th day!!! Students are invited to dress up as their hundred year old self, and/or can bring in 100 items such as a poster or bag of items. We will celebrate together as a school to see all items, and costumes in the morning. In addition students may take part in more 100th day related activities in their classroom.



## Valentine's Day Party Tuesday, February 14th

We will be celebrating Valentine's Day on Feb. 14th with a small party at the end of the school day. If your child is choosing to bring Valentine cards please make sure they bring enough for everyone in their classroom. Students may give Valentines to students outside of their classroom but this is not required. Valentines should be brought in on Valentine's Day, we will not be passing them out prior to this day. Students will open their Valentines and enjoy a treat as a school at the end of the day. **An updated student name list is attached to this newsletter, as we now have two new students!**

**Our awesome Booster Club will be providing our treat of strawberry milk, and fruit with dip.**  
**Thank you Booster Club!!**

## Evaline Blue T-Shirt

**The Booster Club has received a generous donation that has been set aside for the blue shirt fund. If your child is in need of a new blue shirt and you are financially unable to purchase one at this time, please contact the office.**



## Important Dates!!



### FEB.

Thurs. 9th: Report cards out

Mon. 13th: Our 100th Day of school!

Tues. 14th: Valentines Day Party

**\*Wed. 15th - Fri. 17th:**

**Spring Conferences - 11:30 dismissal each day\***

Thurs. 16th: 3rd/4th grade & HiCap - water testing on the Olequa creek

Fri. 17th: Lion Pride Day - 11:30 dismissal

Mon. 20th: No School - Presidents Day

Tues. 21st: School Board Meeting, 6:30

Wed. 22nd: State Capitol tour field trip, 3rd-6th grade

Wed. 22nd: Booster Club Meeting, 3:00

### MARCH.

Wed. 1st - Tues. 21st: All School Read-a-thon

Thurs. 2nd: Dr. Seuss Birthday

Thurs. 2nd: Lion Pride Day - 11:30 dismissal

Friday. 3rd: Mid-Winter Break - No School

Mon. 6th - Fri. 10th: Swimming Lessons at Thorbeckes, 1st-6th grade

Fri. 10th: Olympia Junior Programs (OJP) in Olympia, 3rd-6th grade.

Sun. 12th: Daylight Savings Time, move clocks ahead 1 hour

Tues. 21st: School Board Meeting, 6:30

Thurs. 23rd: 3rd/4th grade & HiCap - water conference at the Evergreen State College

Tues. 28th - Fri. 31st: Cispus, 6th graders

Fri. 31st: Lion Pride Day - 11:30 dismissal

## Attention Upcoming Kindergarteners!

As we prepare for next year's enrollment we would like to get an estimated count for our upcoming kindergarteners. If you have a child in your household that will be attending kindergarten in the upcoming school year please fill out the document attached to today's newsletter and return it to the Evaline School office. Thank you!!

## Proposition 1

**EVALINE REPLACEMENT  
EDUCATIONAL PROGRAMS  
AND OPERATIONS LEVY**

**Levy dollars = Learning!**



## NOT A NEW TAX

Every 2 years the district asks voters to **replace the previous expiring levy**. The district has asked for the same amount of \$190,000 per year since 2009, and is asking for the same amount for the upcoming levy cycle. The expiring local levy averaged a tax rate of \$1.06 per \$1,000 of assessed property value during the last levy cycle. The new levy rate is much lower at \$0.83 per \$1,000, due to the increase in assessed property values. This is the lowest levy rate in Lewis County. **The levy funds educational programs and operations not funded or not fully funded by the State, which includes, but is not limited to:**  
non high payments to other districts for Evaline 7-12 grade students, special education programs not funded through basic education, technology equipment and enhancements, security and emergency preparedness, curriculum replacement, staff professional development and training, field trips and field trip transportation, food service, maintenance and operations outside of basic education funding.

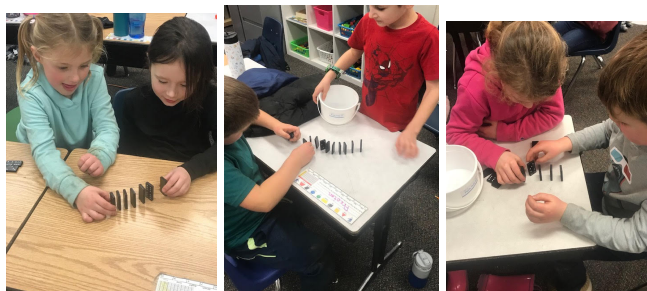
## Kindergarten

Mrs. Tinnin

This week we are learning how to sound out four letter words. Students are also reading short stories in our little readers. They are reading about a little girl named Kit.

Students are learning how to subtract numbers 1-10 using the terms take away and minus. We also started playing a game determining which one doesn't belong. Which One Doesn't Belong is fun because there are no wrong answers as long as the reason behind their answer makes sense.

We are gearing up for 100's day on Monday, February 13th. 100's day is a big day in kindergarten. We will have a day full of fun activities.



## First and Second Grade Explorers

Mrs. Mittge

Fish, salmon, sound, and cheers! These busy explorers had their first ever Critter Play Day with their closet critters. Closet critters are mini-erasers in the shape of critters that "live" in students' cubbies. They are given to students who complete work and who bring Boomerang Folders and Reading Logs back signed. Last Friday we brought our critters out for some pretend play! Boy, did we have fun telling stories!

Nearly all of our salmon are no longer eggs! It is so much fun to watch our young alevin zip around the bottom of the aquarium carrying their yolk sacs with them.



In science we worked with string and metal spoons to hear and see how sound can travel through different materials.

In math we are working on a new math cheer that goes something like this, "Mathematicians pro-blem solve. Mathematicians, dive in, pull out, and problem solve." (Please imagine rah, rahs and hopping).



## Third and Fourth Grade Classroom

Mrs. Mars

We have made it halfway through the school year! Students have just completed their midyear testing and I am pleased to say there was tons of growth. Your students are working hard and giving their best effort!

As a class we have made a goal for every student to reach Leap 6 by the end of the year. If your student is on Leap 3 or above they are on track to reach this goal. If they are not yet on Leap 3 please be reading with them and encouraging them towards this goal. **Now that we are halfway through the year students reading homework is increasing from 20 minutes per night to 30. This will start next Monday February 6th.**

Congratulations to Sasha for making it into the 100's Club!!!



## Fifth and Sixth Grade Classroom

Mr. Burlingame

We have started reading logs for 5th and 6th grade. These logs are sent home every Monday and need to be filled out nightly. Students will keep a log of the book title, time spent reading, and your initials/ signature so you know what they are reading. The requirement is 20 minutes a night, every night Monday through Friday. Please, no graphic novels unless cleared by me beforehand.



## **6th Grade Parents!**

Last week Cispus forms were sent home in your newsletter packet. Please return the permission slip as soon as you can even if your student will not be attending. We need to let the camp know our attendance numbers for food and housing. If you need a new set of forms, please let me know at [sburlingame@evalinesd.k12.wa.us](mailto:sburlingame@evalinesd.k12.wa.us) or give me a call at (360) 785-3460. Thank you!



## Special Education-Title1/LAP- Social Emotional Learning (SEL): Mrs. Duren

This week in SEL we have been wrapping up our work on the character trait of *Empathy* and beginning to examine what our next character trait of *Perseverance* is all about.

We have also asked all of our students, as it is the end of the first semester, to think back on the character traits we have covered so far and share how they connect with each other. We have asked them to think about which ones they feel they are excelling in, and which ones they have more work to do on.

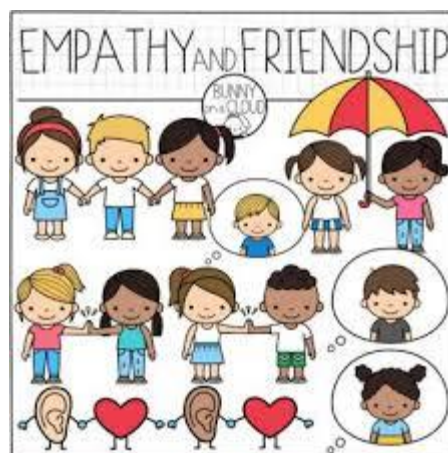
In our beloved Kindergarten class - the overwhelming response to all of the above can be summed up with one little phrase **"Be Nice"**. For some they feel they are doing pretty well at it, for others, not so much. But they all agree it is important, it is the connecting piece to all the character traits we have learned thus far, and it will help them be great in everything they do in the future.

With our 1st and 2nd Explorers, they are realizing how being a student of character will help them be better friends. However, some have also come to realize that this might take a lot of practice and effort... and to be brutally honest, as they are prone to be in these grades, this isn't always what they think they want to do all the time. Therefore, they have come to realize that being a person of character can include having to make tough choices and can result in both pleasant and unpleasant consequences depending on those choices. Together the class brainstormed and created a lovely written Empathy Meditation Exercise that sums this up nicely:

May you be responsible, respectful and healthy;  
May you be nice, peaceful and kind;  
May you be an awesome, positive and joyful friend;  
May you be all you ever wanted to be.

May I be responsible, respectful and healthy;  
May I be nice, peaceful and kind;  
May I be an awesome, positive and joyful friend;  
May I be all I ever wanted to be.

May we be responsible, respectful and healthy;  
May we be nice, peaceful and kind;  
May we be awesome, positive and joyful friends;  
May we be all we ever wanted to be.



**Our 3rd and 4th graders** have really stepped it up this first semester with both their willingness to participate, and their ability to apply what they have learned to their lives. Most recently they were asked to write a paragraph about how they have shown empathy lately and what it means to them, and every student was able to clearly demonstrate a knowledge of the trait and apply it to their life, acknowledging the value of being empathetic with others in both leadership and friendship scenarios. **This is perhaps my funnest class to work with this year, as at this age they are ready to focus and do the work on these social emotional life skills, and their effort is paying off.**

**Last but not least, our opinionated and creative 5th and 6th graders** have been challenged this year to apply the character traits they are reviewing to leadership skills and acts of service as part of their class each month, with this month being no exception. We also continually connect the character traits with each other since in life it is common to need to use multiple skills and qualities to best handle situations that come up. It has been a great class to work with, and a lot of growth has occurred, so much so in fact, that **we will be showcasing some of their work and observations specifically during the month of February - so be watching - it is bound to be a lot of fun!**