

SAMUEL MOREY ELEMENTARY SCHOOL
& WESTSHIRE ELEMENTARY SCHOOL
After School News



Register for *After the Bell*

All registration happens online via a program called EZ Child Track:

<https://www.ezchildtrack.com/parentportala/?c=afterthebell>

- You'll need to set up an account (if you haven't done so already).
- Once you've established an account, choose your child's school - either SME or WES.
- **The cost per child per day: \$12**
- Payments can be made online via EZ Child Track, or by check or cash.

Hours of Operation

SAMUEL MOREY SCHOOL:

- Monday - 3:00-5:30
- Tuesday - 3:00-5:30
- Wednesday - 3:00-5:30
- Thursday - 2:00-5:30
- Friday - 3:00-5:30

WESTSHIRE ELEMENTARY:

- Monday - 3:00-5:30
- Tuesday - 3:00-5:30
- Wednesday - 3:00-5:30
- Thursday - 2:00-5:30



How It Works

You'll sign your children up for the days of the week that you'd like them to attend. Once these days are established, your child's name will appear on our roster for those days each week.

Families are billed prior to each service period. A bill will be generated every two weeks. An autopay option can be set up on your account - and is recommended!

What We Do

There are so many possibilities!

Games

Cooking

Field Trips

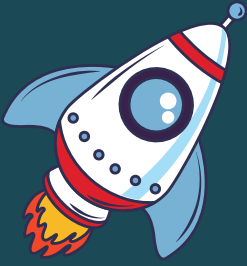
Relax with Friends

Arts & Crafts

Outdoor Fun

Fiber Arts

For more information, contact:
LBerger@RivendellSchool.org



SAMUEL MOREY ELEMENTARY SCHOOL
& WESTSHIRE ELEMENTARY SCHOOL

After School News



Financial Aid Information

As Rivendell is an interstate school district, the process of applying for financial aid is different for Vermont and New Hampshire residents. In both cases, assistance is available through state child-care subsidy programs.

Read the information below to get started. If you have questions, please reach out to Leslie Berger for further assistance: LBerger@RivendellSchool.org

For Vermont Residents

The subsidy, also known as the Child Care Financial Assistance Program (CCFAP), is managed by VT Child Development Division (CDD). We strongly encourage eligible families to apply! There is a registration process, and you won't hear back immediately about your application, but the agency is reliable and will provide financial assistance for anyone that is eligible. Additionally, if you are found eligible, your child care assistance will begin on the date that your completed application is received. This means that even if it takes a while to receive confirmation, submitting your application earlier is better, as you'll receive back coverage.

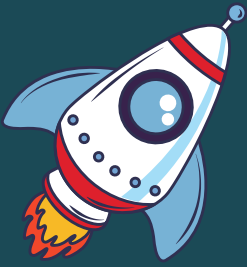
If your application is approved ~

- You'll hear how much CDD will pay, for how many hours, and for what period.
- They'll send authorized payments directly to Rivendell.
- You'll only pay the portion of the bill which is the parent's responsibility.

Income guidelines can be found at this link:

<https://outside.vermont.gov/dept/DCF/Shared%20Documents/Benefits/CCFAP-Income-Guidelines.pdf>

To apply for the subsidy: <https://dcf.vermont.gov/benefits/ccfap>



**SAMUEL MOREY ELEMENTARY SCHOOL
& WESTSHIRE ELEMENTARY SCHOOL**

After School News



For New Hampshire Residents

New Hampshire residents that qualify for financial assistance can receive help paying for their child's attendance at ATB.

The NH Child Care Scholarship provides assistance for NH residents:

- Receiving Financial Assistance (FANF)
- Participating in the FANF Work Program
- Working or looking for work and meeting income guidelines
- Going to school and meeting income guidelines

How to apply?

Go to: <https://www.nh-connections.org/families/child-care-scholarship/>

This webpage provides several links. From here you'll be able to determine if your family qualifies for financial assistance. If you're eligible, click on the box labeled See if you Qualify for Assistance >

This will take you to a new webpage for NH EASY GATEWAY TO SERVICES. Here you'll be able to enter your information and see right away if you qualify.

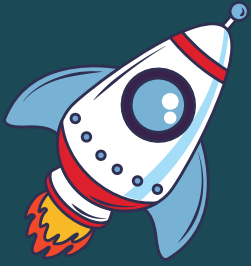
If your family does qualify, please be in touch with Leslie Berger. She will provide you with a Child Care Provider Verification Form to submit to DHHS.

Billing Info

EZ Child Track will bill ATB families on a bi-weekly schedule. Bills will be due on the Friday prior to each pay period. A schedule of billing dates will be made available to ATB families.

Absences/School Cancellations

If your child is absent from school and therefore absent from ATB, your account will be credited during the next billing cycle. In addition, families will be credited for school closures, snow days, and unplanned early releases



SAMUEL MOREY ELEMENTARY SCHOOL
& WESTSHIRE ELEMENTARY SCHOOL
After School News



What does *After The Bell* look like?



It looks like so many ways for
kids to have fun!

Have questions? Contact:
LBerger@RivendellSchool.org