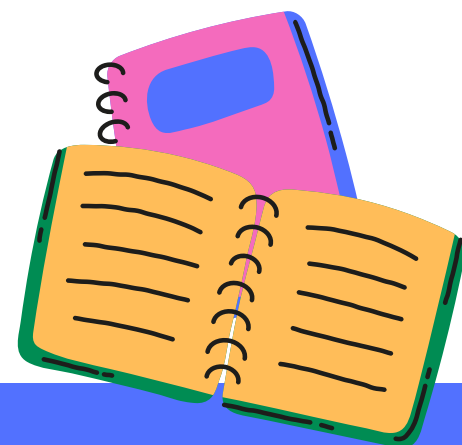


WELCOME BACK  
SES EAGLES



# FROM THE DESK OF MRS. FETNER...

DEAR PARENTS AND STUDENTS,

WELCOME BACK TO ANOTHER EXCITING SCHOOL YEAR AT SEMMES ELEMENTARY SCHOOL! I HOPE YOU ALL HAD A RESTFUL AND ENJOYABLE SUMMER BREAK. AS THE PRINCIPAL, I AM THRILLED TO WELCOME OUR RETURNING FAMILIES AND WE ARE VERY EXCITED TO WELCOME TO THOSE WHO ARE NEW TO OUR EAGLE COMMUNITY.

AT SEMMES ELEMENTARY, WE ARE COMMITTED TO PROVIDING A SAFE, NURTURING, AND ENGAGING LEARNING ENVIRONMENT WHERE EVERY STUDENT CAN SOAR TO NEW HEIGHTS. OUR DEDICATED TEACHERS AND STAFF HAVE BEEN WORKING DILIGENTLY TO PREPARE FOR THE UPCOMING YEAR, AND WE ARE EAGER TO SUPPORT OUR STUDENTS IN THEIR ACADEMIC AND PERSONAL GROWTH.

THIS YEAR, WE HAVE MANY EXCITING PLANS AND INITIATIVES TO ENHANCE OUR EDUCATIONAL PROGRAMS AND FOSTER A STRONG SENSE OF COMMUNITY. WE ENCOURAGE ALL PARENTS TO STAY INVOLVED AND CONNECTED THROUGH OUR VARIOUS SCHOOL EVENTS, VOLUNTEER OPPORTUNITIES, AND REGULAR COMMUNICATIONS.

TOGETHER, AS A TEAM, WE WILL MAKE THIS A FANTASTIC YEAR FILLED WITH LEARNING, GROWTH, AND MEMORABLE EXPERIENCES. LET'S WORK TOGETHER TO ENSURE THAT EVERY EAGLE AT SEMMES ELEMENTARY ACHIEVES THEIR FULLEST POTENTIAL.

THANK YOU FOR YOUR CONTINUED SUPPORT AND DEDICATION TO OUR SCHOOL. HERE'S TO A SUCCESSFUL AND INSPIRING SCHOOL YEAR!

MRS. FETNER



# LET'S MEET OUR NEW ASSISTANT PRINCIPAL, MRS. JANNA CORLEY



I'M JANNA CORLEY, YOUR NEW ASSISTANT PRINCIPAL, AND I COULDN'T BE MORE EXCITED TO JOIN SEMMES ELEMENTARY! WITH 22 YEARS OF EXPERIENCE WORKING WITH STUDENTS FROM PRE K3 TO 12TH GRADE, I'M PASSIONATE ABOUT TEACHING AND LEARNING. I ALSO TEACH GRADUATE COURSES IN THE AREA OF INSTRUCTIONAL DESIGN AND TECHNOLOGY AT THE UNIVERSITY OF MOBILE.

WHEN IM NOT WORKING, I LOVE TRAVELING, READING GREAT BOOKS, AND SPENDING TIME WITH MY FAMILY AND FRIENDS. I AM MARRIED TO CHRIS CORLEY AND WE HAVE TWO AMAZING DAUGHTERS. LILY ATTENDS TROY UNIVERSITY AND CAROLINE WILL BEGIN HER FIRST YEAR OF COLLEGE IN THE FALL AT AUBURN UNIVERSITY. I CAN'T WAIT TO SHARE MY LOVE OF LEARNING WITH ALL OF YOU. LET'S MAKE THIS SCHOOL YEAR AMAZING TOGETHER!"

WELCOME

# BACK TO SCHOOL

JUST A FEW REMINDERS AS WE  
KICK OFF THE 2024–2025 SCHOOL  
YEAR— PLEASE READ OVER EACH  
SLIDE CAREFULLY!



## ARRIVAL & DISMISSAL TIMES

**7:45 – TEACHERS ON DUTY – CAR LINE & BUS STUDENTS MAY ENTER THE BUILDING**

**8:10 – TARDY BELL RINGS – ANY STUDENTS THAT ARRIVE AFTER THIS TIME, MUST BE BROUGHT INTO THE OFFICE BY A PARENT AND SIGNED IN**

**3:00 – CAR RIDERS & WALKERS DISMISSED**

**3:05 – BUS DISMISSAL BEGINS**

**3:25 – DISMISSAL COMPLETED – CAR RIDERS NOT PICKED UP, WILL BE BROUGHT INTO THE OFFICE – PARENTS WILL HAVE TO COME IN AND SIGN STUDENTS OUT FROM THE OFFICE.**



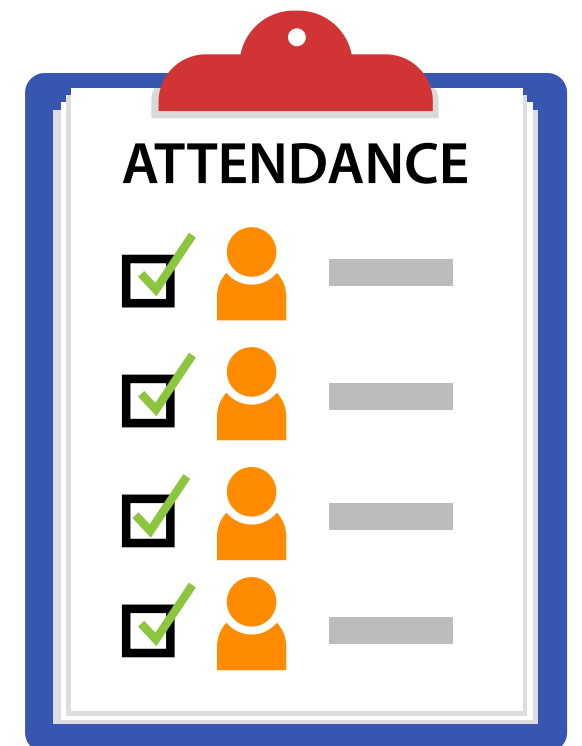
# ATTENDANCE IS VERY IMPORTANT



PLEASE BE SURE YOUR CHILD COMES TO SCHOOL EVERY DAY AND STAYS ALL DAY!

ATTENDANCE INCENTIVES WILL BEGIN SOON! PLEASE MAKE EVERY EFFORT TO BRING YOUR CHILD TO SCHOOL SO THAT THEY DON'T MISS ANY INSTRUCTIONAL TIME.

**\*\*NO EARLY DISMISSALS AFTER 2:30**



# PARENTS ENTERING THE BUILDING

\*Parents may walk their children to class on the FIRST day of school ONLY. After that all students must come through carline to enter the building. We will have paras on duty to assist students as needed.

\*Any parent entering the building MUST go to the front office and get a visitors pass. No one should be in the hallways if you haven't checked in at the office first

\*ID's are checked for everyone entering the building. You must be on a child's contact list in order to enter the building.



# CAR LINE PROCEDURES

**\*PLEASE BE PATIENT! IT TAKES A FEW WEEKS FOR STUDENTS TO LEARN THEIR CAR LINE NUMBERS. CAR LINE WILL MOVE QUICKER AFTER THE FIRST FEW WEEKS OF SCHOOL.**





# CAR LINE



\*Please pull all the way up as close to the car in front of you as possible.

\*Do NOT get out of your car for any reason. If you need to help your child into a car seat, etc. you will need to pull around to a parking space to do that. We cannot hold up carline.

\*Please make sure your car tag is hanging and visible. Students **MUST** learn their car tag number.



\*Do not walk up to the benches to get your child. This is a safety issue and we cannot allow this.

\*Keep your car in park at all times, until you are given the ok to pull forward.

\*Students **MUST** load on the passenger side of the car.

\*Please stay off of your cellphone while in car line.



# BUS ROUTE INFORMATION—

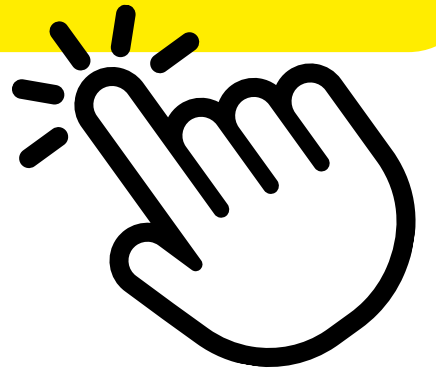
\*CLICK THE LINKS TO THE RIGHT TO VIEW YOUR BUS ROUTE. IF YOU NEED ASSISTANCE, CALL THE SCHOOL AT 221-1630

\*OUR BUSES ARE ALL ASSIGNED COLORS— PLEASE MAKE SURE YOUR CHILD KNOW WHAT COLOR BUS THEY RIDE!

\*STUDENTS WILL HAVE A COLORED BOOKBAG TAG ON THEIR BOOKBAG AND THIS MUST ALWAYS STAY ON THEIR BOOKBAG.

[SEMMES STOPS](#)

[MCPSS ROUTE FINDER](#)



# SNACKS & ICE CREAM

- Snacks and drinks are sold Monday–Thursday for \$1.00
- Students must visit the snack cart before they go to class each morning.
- Ice Cream is sold every Friday. All ice cream is \$1.00. **Ice cream will NOT be sold on Friday, August 9th.**



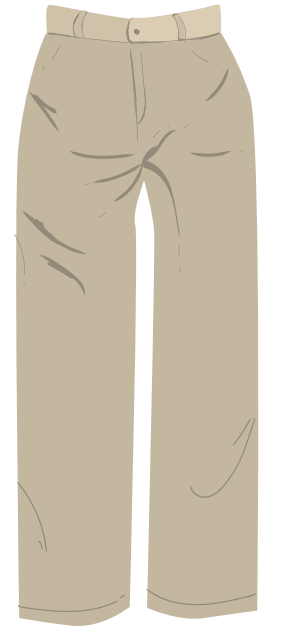
## UNIFORM POLICY

PLEASE SELECT THE LINK BELOW TO VIEW OUR UNIFORM POLICY. OUR UNIFORM POLICY WILL BE STRICTLY ENFORCED THIS YEAR. IF YOU NEED ASSISTANCE WITH UNIFORMS, PLEASE CONTACT THE SCHOOL.

LINK: [UNIFORM POLICY](#)

\*\*PLEASE NOTE THAT ALL WATER BOTTLES MUST BE CLEAR AND WATER IS THE ONLY DRINK ALLOWED AT SCHOOL IN THE WATER BOTTLES.

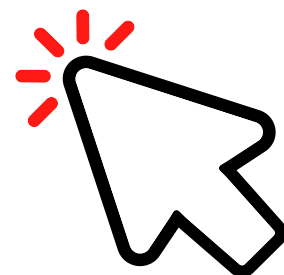
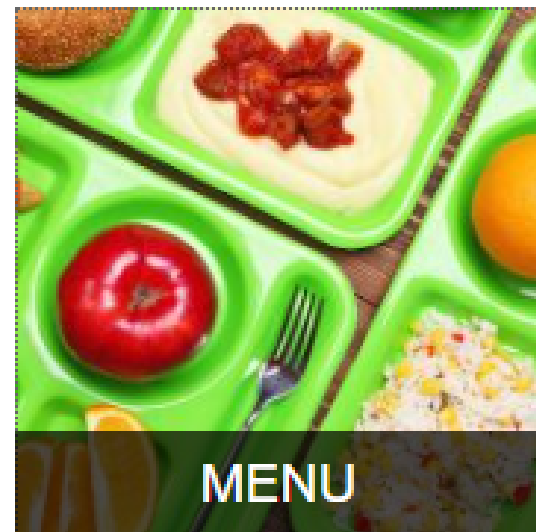
\*\*ALSO, THE NEW DISTRICT POLICY, DOES NOT ALLOW ANY CELL PHONES. IF STUDENTS BRING CELL PHONES TO SCHOOL, THEY WILL BE PUT IN A LOCKBOX UNTIL THE END OF THE DAY. CELL PHONES MAY NOT STAY IN PURSES OR BOOKBAGS.



# AUGUST BREAKFAST & LUNCH MENUS...

NOW ON OUR SCHOOL WEBPAGE AND APP!

\*ITEMS ARE SUBJECT TO CHANGE BASED ON AVAILABILITY



# HOW TO ACCESS SCHOOLOGY...

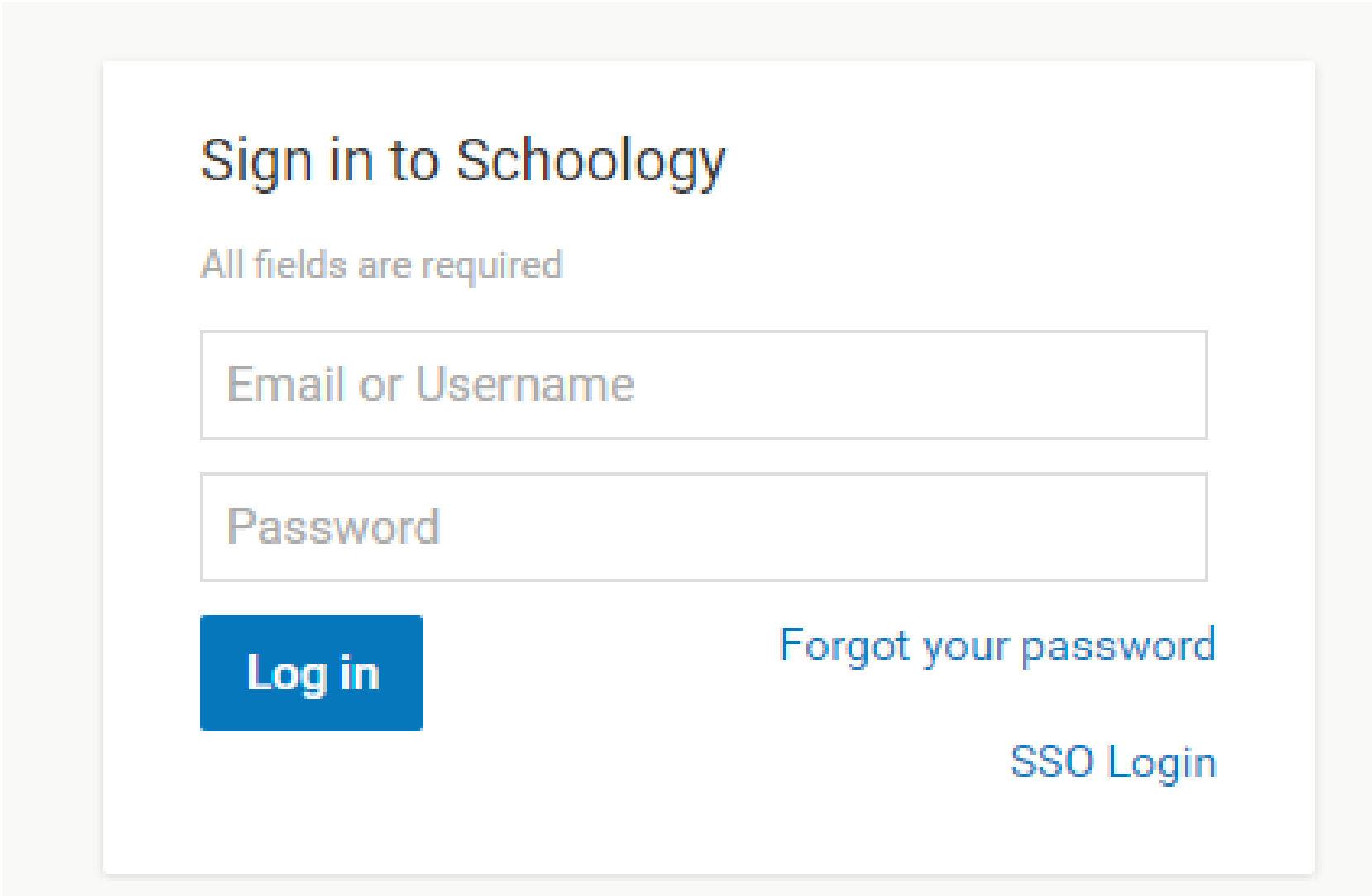
1. GO TO [HTTPS://APP.SCHOOLOGY.COM/LOGIN](https://app.schoology.com/login)  
(ALSO LINKED ON OUR SCHOOL WEBPAGE)

2. ENTER THE EMAIL YOU USED TO  
REGISTER YOUR CHILD

3. USE THE TROUBLE SHOOTING GUIDES  
BELOW

[Forgot my Schoology Password Guide](#)

[Schoology Help for Parents](#)



Sign in to Schoology

All fields are required

Email or Username

Password

Log in

[Forgot your password](#)

[SSO Login](#)

**4-Independence Day (System wide Holiday)**

July 2024						
S	M	T	W	Th	F	S
	1	2	3	4	5	6
7	8	9	10	11	12	13
14	15	16	17	18	19	20
21	22	23	24	25	26	27
28	29	30	31			

**JANUARY 2025**

S	M	T	W	Th	F	S
		1	2	3	4	
5	6	7	8	9	10	11
12	13	14	15	16	17	18
19	20	21	22	23	24	25
26	27	28	29	30	31	

1-New Year's Day (System Wide Holiday)  
2-Professional Deve.  
3-Teacher Work Day  
6-3rd QTR. Begins  
20-MLK Jr. Day (System wide Holiday)  
5-19/ T-21 Days

**1-Professional Development  
2-Teacher Work Day  
5-6-Professional Development  
7-First Day of School/ 1st QTR**

*Students-18 Days  
Teachers-22 Days*

August 2024						
S	M	T	W	Th	F	S
				1	2	3
4	5	6	7	8	9	10
11	12	13	14	15	16	17
18	19	20	21	22	23	24
25	26	27	28	29	30	31

**FEBRUARY 2025**

S	M	T	W	Th	F	S
						1
2	3	4	5	6	7	8
9	10	11	12	13	14	15
16	17	18	19	20	21	22
23	24	25	26	27	28	

3-Virtual / Distance Instruction  
S-20/ T-20 Days

**2-Labor Day (System wide Holiday)  
16-Professional Development  
No Class for Students  
30- Virtual/ Distance Learning**

*Students 19 Days  
Teachers 20 Days*

SEPTEMBER 2024						
S	M	T	W	Th	F	S
1	2	3	4	5	6	7
8	9	10	11	12	13	14
15	16	17	18	19	20	21
22	23	24	25	26	27	28
29	30					

**MARCH 2025**

S	M	T	W	Th	F	S
						1
2	3	4	5	6	7	8
9	10	11	12	13	14	15
16	17	18	19	20	21	22
23	24	25	26	27	28	29
30	31					

3-7-Presidents/ Fat Tuesday  
14- end of 3rd QTR. (44 Days)  
17- Teacher Work Day  
18- 4th QTR. Begins  
S-15/ T-16 Days

**11 -End of 1st QTR.( 48 DAYS)  
14- Teacher Work Day  
15-2nd Qtr. Begin**

*Students -22 Days  
Teachers-23 Days*

OCTOBER 2024						
S	M	T	W	Th	F	S
		1	2	3	4	5
6	7	8	9	10	11	12
13	14	15	16	17	18	19
20	21	22	23	24	25	26
27	28	29	30	31		

**APRIL 2025**

S	M	T	W	Th	F	S
		1	2	3	4	5
6	7	8	9	10	11	12
13	14	15	16	17	18	19
20	21	22	23	24	25	26
27	28	29	30			

21-25- Spring Break  
S-17/ T-17 Days

**5-Virtual/ Distance Instruction  
11-Veterans Day (System wide Holiday)  
25-29 Thanksgiving Break (School Holiday)**

*Students -15 Days  
Teachers -15 Days*

NOVEMBER 2024						
S	M	T	W	Th	F	S
					1	2
3	4	5	6	7	8	9
10	11	12	13	14	15	16
17	18	19	20	21	22	23
24	25	26	27	28	29	30

**MAY 2025**

S	M	T	W	Th	F	S
				1	2	3
4	5	6	7	8	9	10
11	12	13	14	15	16	17
18	19	20	21	22	23	24
25	26	27	28	29	30	31

21-End of 4th QTR.( 45 Days)  
22-Last Day for Students  
23-Teacher Work day  
26-Memorial Day (System wide Holiday)  
27-Teacher Work Day  
S-16/ T-18

**20-2nd QTR. Ends (43 Days)  
23-31 Christmas Break (School Holiday)**

*Students -15 Days  
Teachers-15 Days*

DECEMBER 2024						
S	M	T	W	Th	F	S
1	2	3	4	5	6	7
8	9	10	11	12	13	14
15	16	17	18	19	20	21
22	23	24	25	26	27	28
29	30	31				

**JUNE 2025**

S	M	T	W	Th	F	S
1	2	3	4	5	6	7
8	9	10	11	12	13	14
15	16	17	18	19	20	21
22	23	24	25	26	27	28
29	30					

12 Month Employee Holidays 2024-25  
July 4-Independence Day  
Sept.2-Labor Day  
Nov. 11-Veterans Day  
Nov.27-29 Thanksgiving  
Dec. 24-26-Christmas Break  
Dec.31 & Jan. 1 New Year's  
Jan.20 MLK Jr. Day  
March 3-5 Mardi Gras/ Pres. Day  
May 26- Memorial Day/June19-Juneteenth Day

# 2024-2025 CALENDAR

■ First and Last Day of Quarter    
 ■ Virtual/Distance Instruction    
 ■ Teacher Planning/Staff Development/Student Holiday    
 ■ 9-FLEX DAYS    
 ■ Student/Teacher Holidays

# UPCOMING EVENTS



August 7- First Day Back to School

August 7- First Day Pictures for Pre-K & Kindergarten (proofs will be sent home to order)

August 14-18- iReady Diagnostic Testing

September 2- Labor Day- No School

September 10- PTO Open House (tentative date- more information coming soon)

September 16- No School- Teacher Professional Development Day

September 30- Virtual Learning Day- Students will not be on campus



# SCHOOL SUPPLIES

All school supplies will be provided to students this year.

Wish list items can be found on the school website.



# EATING LUNCH WITH YOUR CHILD...

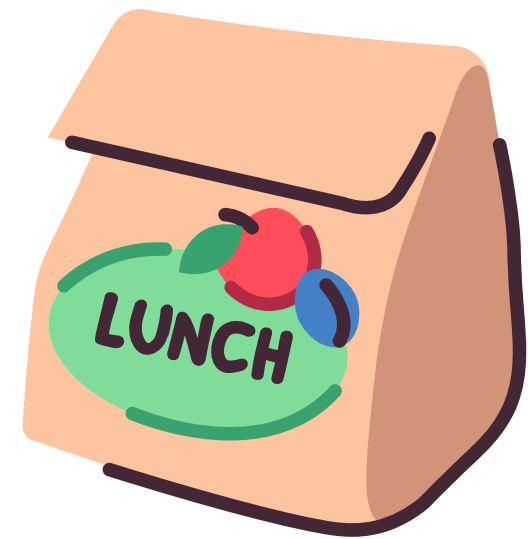
You are more than welcome to come and eat lunch with your child. However, we do ask that you follow the procedures listed below...

\*Kindergarten parents- please consider waiting a few weeks before you come to give your child time to adjust to being in school.

\*Please enter through the front doors, and sign in at the office.

\*You will then proceed to the cafeteria, where you will wait for your child's class to arrive.

\*When lunch is over, please tell your child goodbye from the cafeteria and exit through the front doors of the school. You are not allowed to return to the classroom for any reason.





**CONTACT US**

**Semmes Elementary: 251-221-1630**

**Mrs. Fetner (Principal): [jfetner@mcpss.com](mailto:jfetner@mcpss.com)**

**Website: [www.semmeelementary.com](http://www.semmeelementary.com)**

**Facebook: [www.facebook.com/SemmesElementaryEagles/](http://www.facebook.com/SemmesElementaryEagles/)**

**\*\*Please follow us on Facebook & check our website for updated information! School App coming soon...stay tuned!**

IT'S GOING TO BE A GREAT  
YEAR!

SEMME'S EAGLES ARE THE BEST!

LET'S GO!

