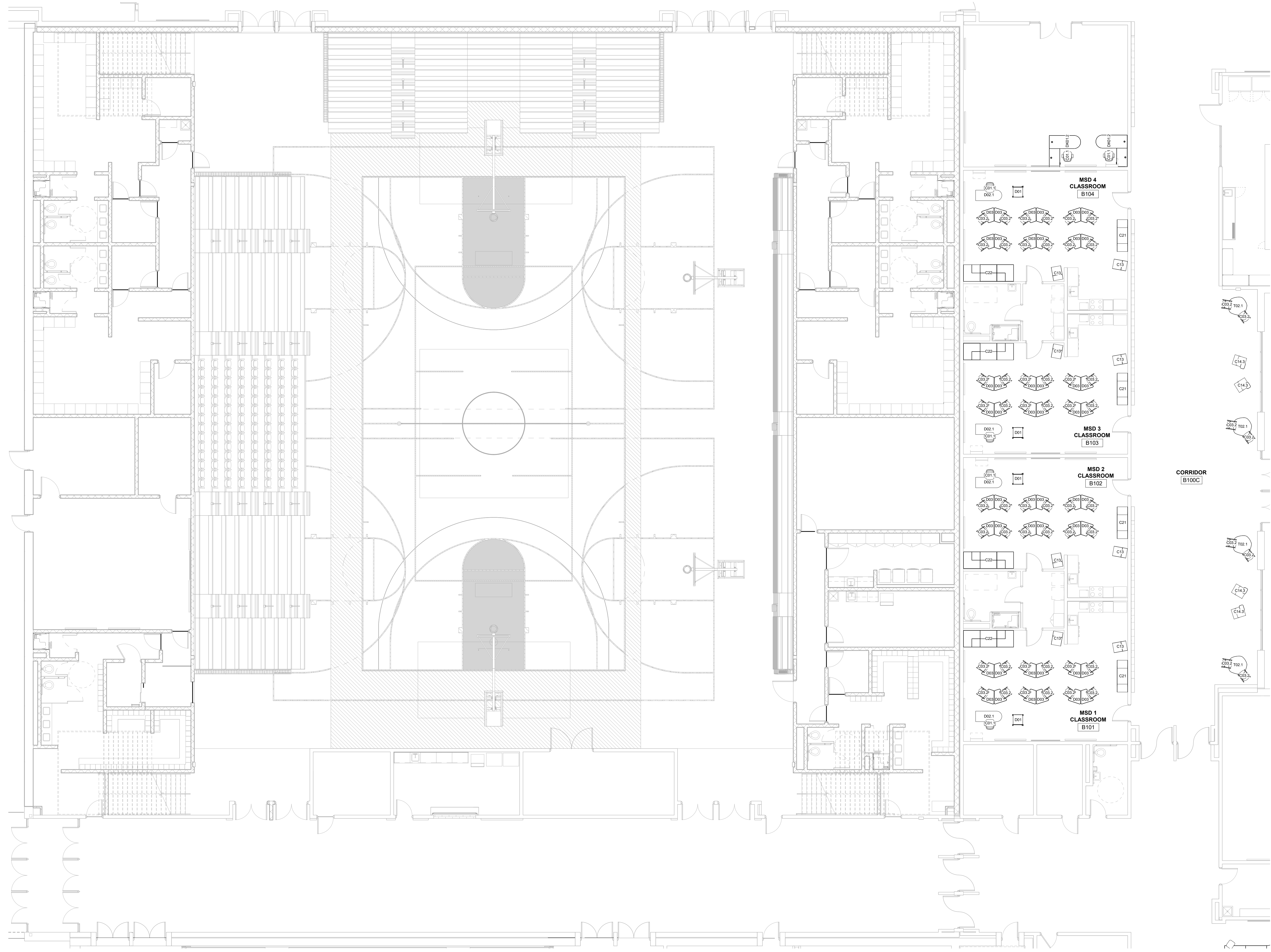
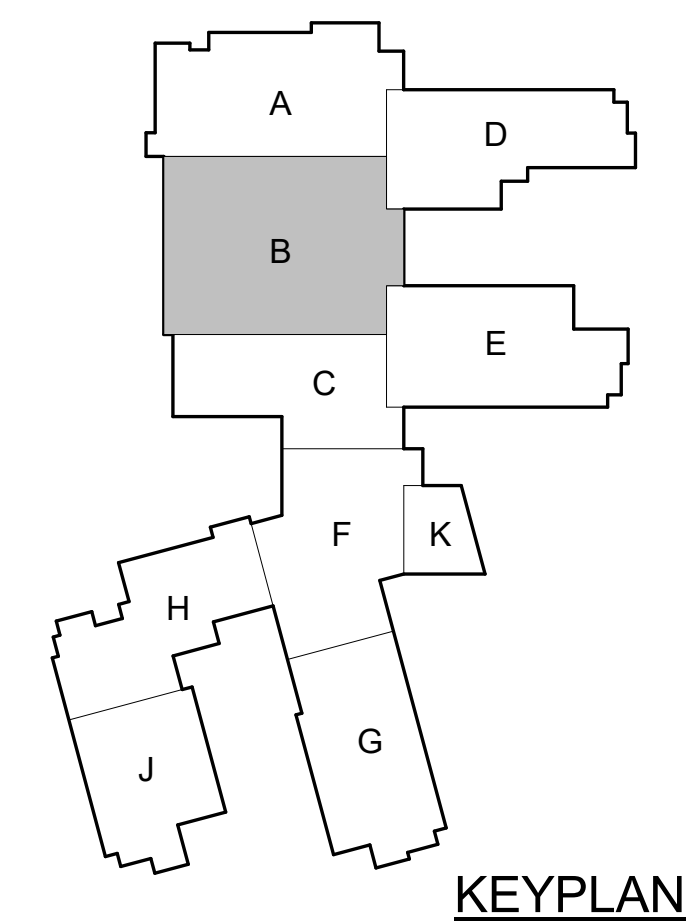






In association with:



**FIRST FLOOR FURNITURE PLAN - AREA B**  
1/8" = 1'-0"

Revisions:

#	Description	Date

Designed By: \_\_\_\_\_ Drawn By: \_\_\_\_\_ Checked By: \_\_\_\_\_

The drawings, specifications and other documents, including those in electronic form prepared by Haffer for this project are instruments of Service, and may be used solely with respect to this project. The documents may not be reproduced or modified by a third party without first obtaining the express written consent of Haffer. Authorized use of electronic media or file does not guarantee that these files contain complete and accurate information. In order to insure the accuracy of the information contained and that no changes or modifications have been made, these files must be compared to the project's contract documents with stamped and sealed certification and applicable approved modifications.

Sheet title:  
**FIRST FLOOR FURNITURE PLAN - AREA B**

Architect's Project No: \_\_\_\_\_ Date: \_\_\_\_\_  
Project Number \_\_\_\_\_ Issue Date \_\_\_\_\_  
Drawing No: \_\_\_\_\_

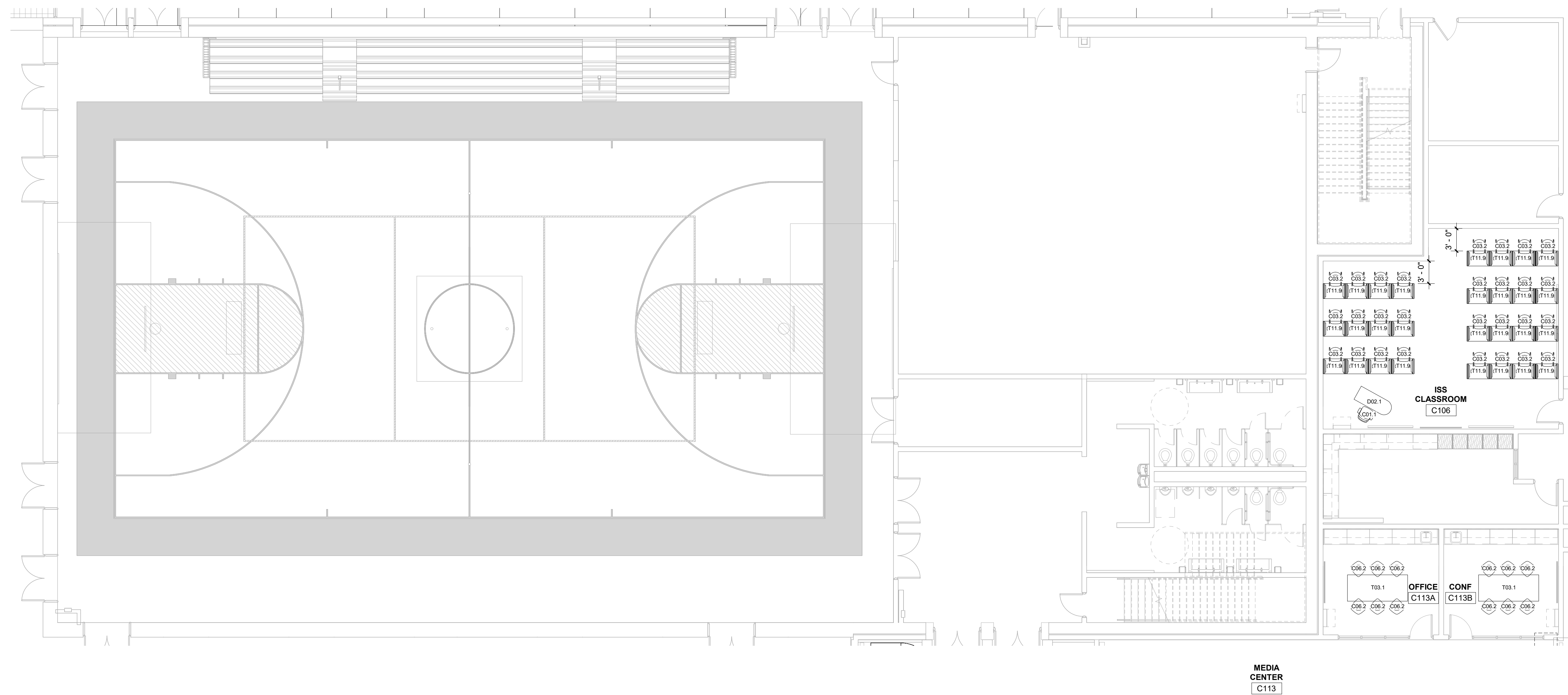


KDE # : BG 22-104

5185 FT. CAMPBELL BLVD  
HOPKINSVILLE, KY 42240

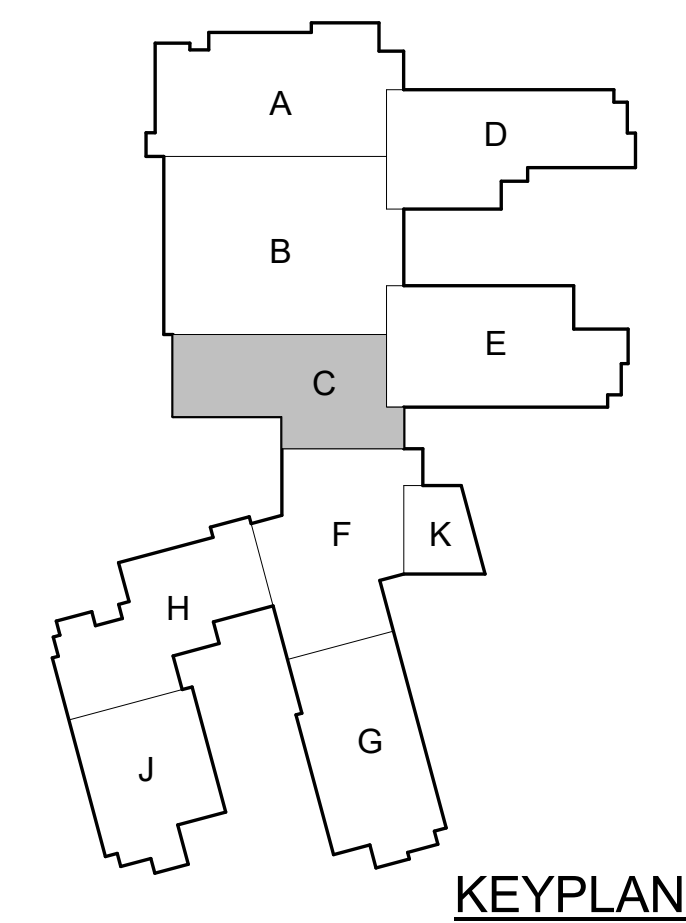
**HAFFER**  
architects • designers • engineers  
21 SE Third Street,  
Suite 800  
Evansville, IN 47708  
T: 812.422.4387  
F: 812.422.8776  
www.hafferdesign.com

In association with:



**FIRST FLOOR FURNITURE PLAN - AREA C**

1/8" = 1'-0"



**KEYPLAN**

Revisions:		
#	Description	Date

Designed By: \_\_\_\_\_ Drawn By: \_\_\_\_\_ Checked By: \_\_\_\_\_

The drawings, specifications and other documents, including those in electronic form prepared by Haffer for this project are instruments of service, and may be used solely with respect to this project. The documents may not be reproduced or modified by a third party without first obtaining the express written consent of Haffer. Authorized use of electronic media or file does not guarantee that these files contain complete and accurate information. In order to insure the accuracy of the information contained and that no changes or modifications have been made, these files must be compared to the project's contract documents with stamped and sealed certification and applicable approved modifications.

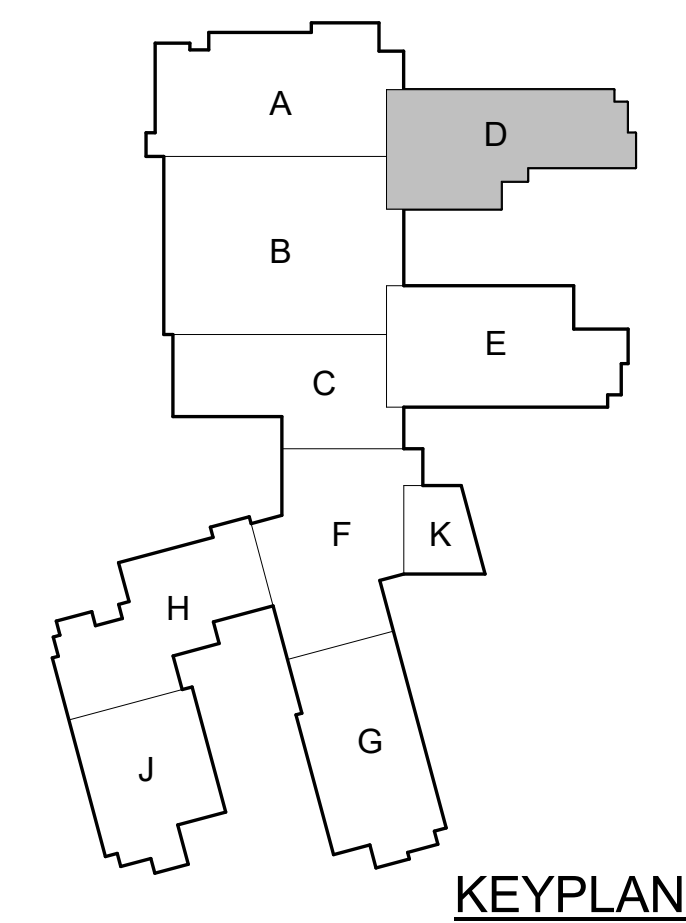
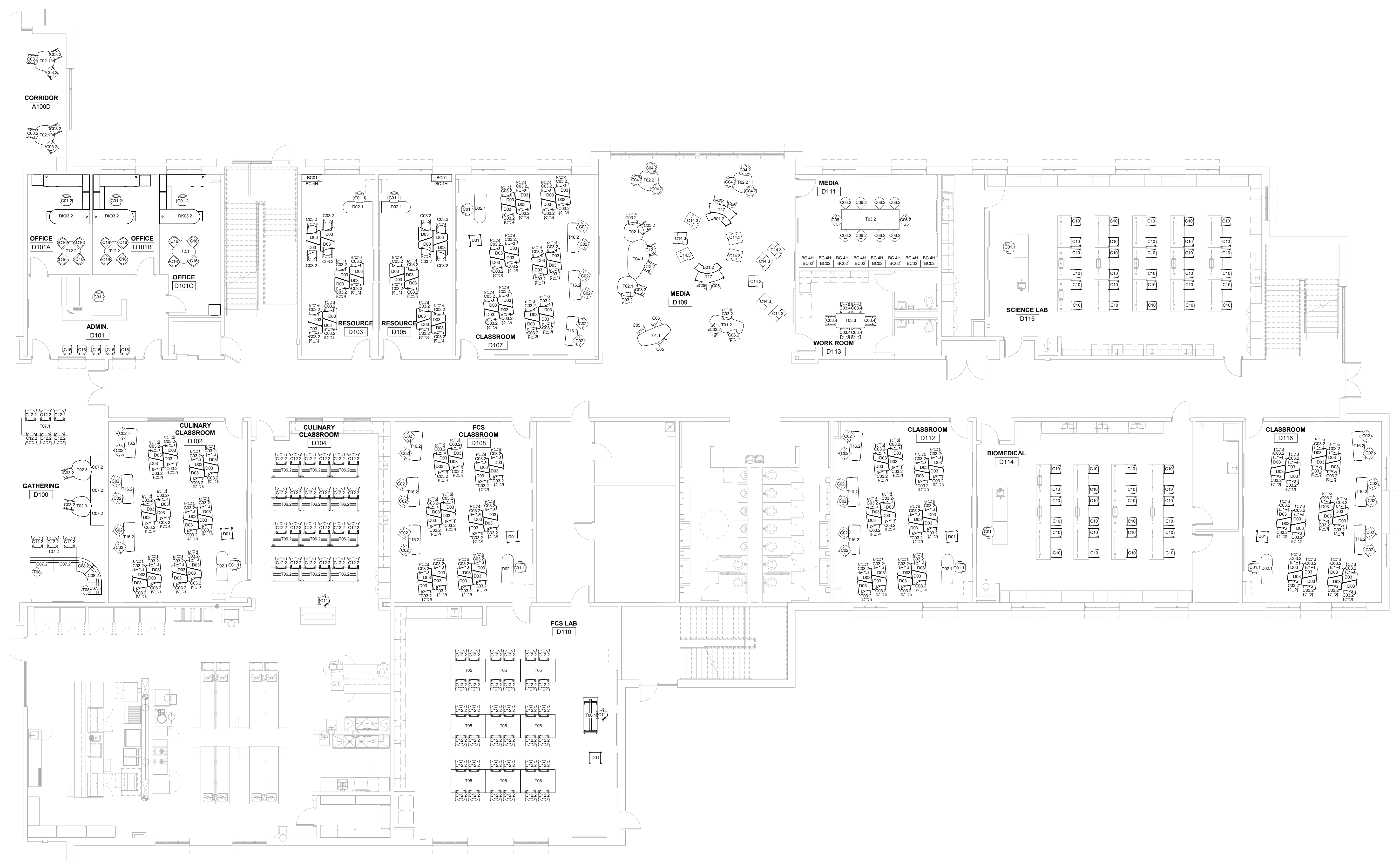
Sheet title:  
**FIRST FLOOR FURNITURE PLAN - AREA C**

Architect's Project No: \_\_\_\_\_ Date: \_\_\_\_\_  
Project Number \_\_\_\_\_ Issue Date \_\_\_\_\_

Drawing No:  
**F3.1**



In association with:



**FIRST FLOOR FURNITURE PLAN - AREA D**  
1/8" = 1'-0"

Revisions:		
#	Description	Date

Designed By: \_\_\_\_\_ Drawn By: \_\_\_\_\_ Checked By: \_\_\_\_\_

The drawings, specifications and other documents, including those in electronic form prepared by Haffer for this project are instruments of Service, and may be used solely with respect to this project. The documents may not be reproduced or modified by a third party without first obtaining the express written consent of Haffer. Authorized use of electronic media or file does not guarantee that these files contain complete and accurate information. In order to insure the accuracy of the information contained and that no changes or modifications have been made, these files must be compared to the project's contract documents with stamped and sealed certification and applicable approved modifications.

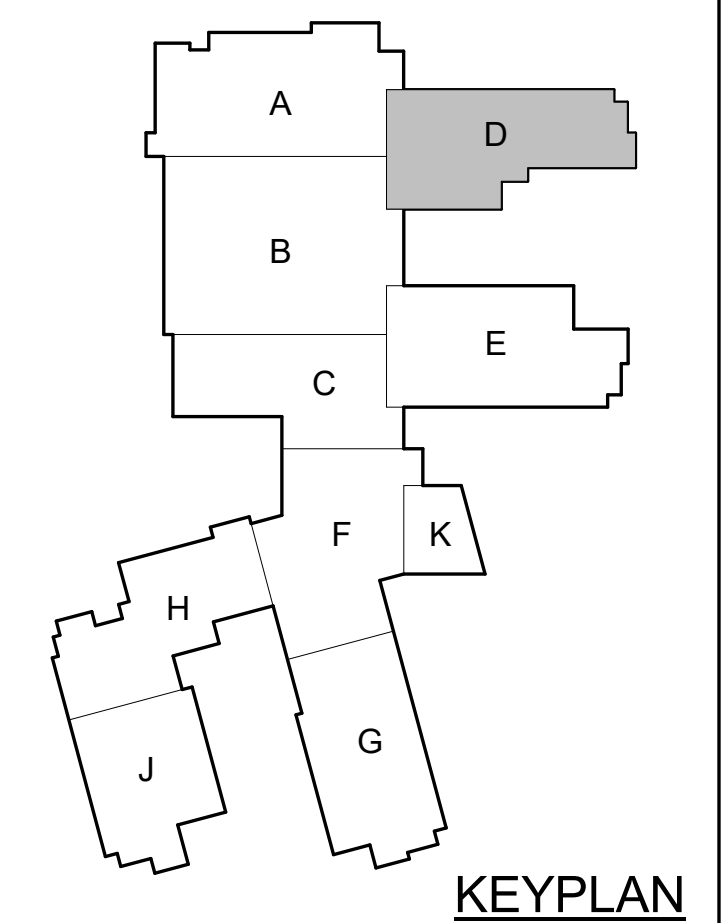
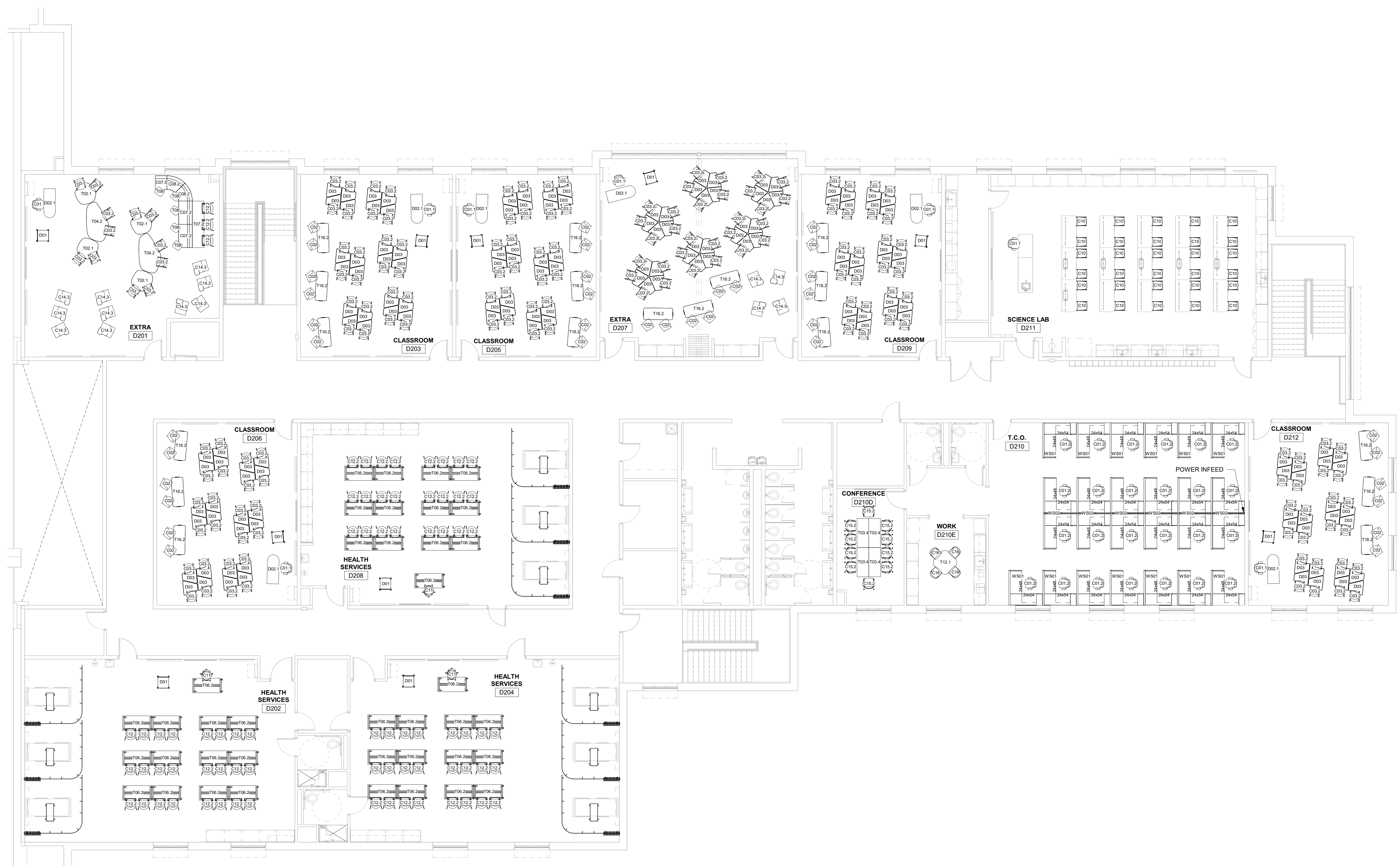
Sheet title:  
**FIRST FLOOR FURNITURE PLAN - AREA D**

Architect's Project No: \_\_\_\_\_ Date: \_\_\_\_\_  
Project Number \_\_\_\_\_ Issue Date \_\_\_\_\_  
Drawing No: \_\_\_\_\_

**F4.1**



In association with:



**SECOND FLOOR FURNITURE PLAN - AREA D**

1/8" = 1'-0"

Revisions:

#	Description	Date

Designed By: Drawn By: Checked By:

The drawings, specifications and other documents, including those in electronic form prepared by Haffer for this project are instruments of service, and may be used solely with respect to this project. The documents may not be reproduced or modified by a third party without first obtaining the express written consent of Haffer. Authorized use of electronic media or file does not guarantee that these files contain complete and accurate information. In order to insure the accuracy of the information contained and that no changes or modifications have been made, these files must be compared to the project's contract documents with stamped and sealed certification and applicable approved modifications.

Sheet title:

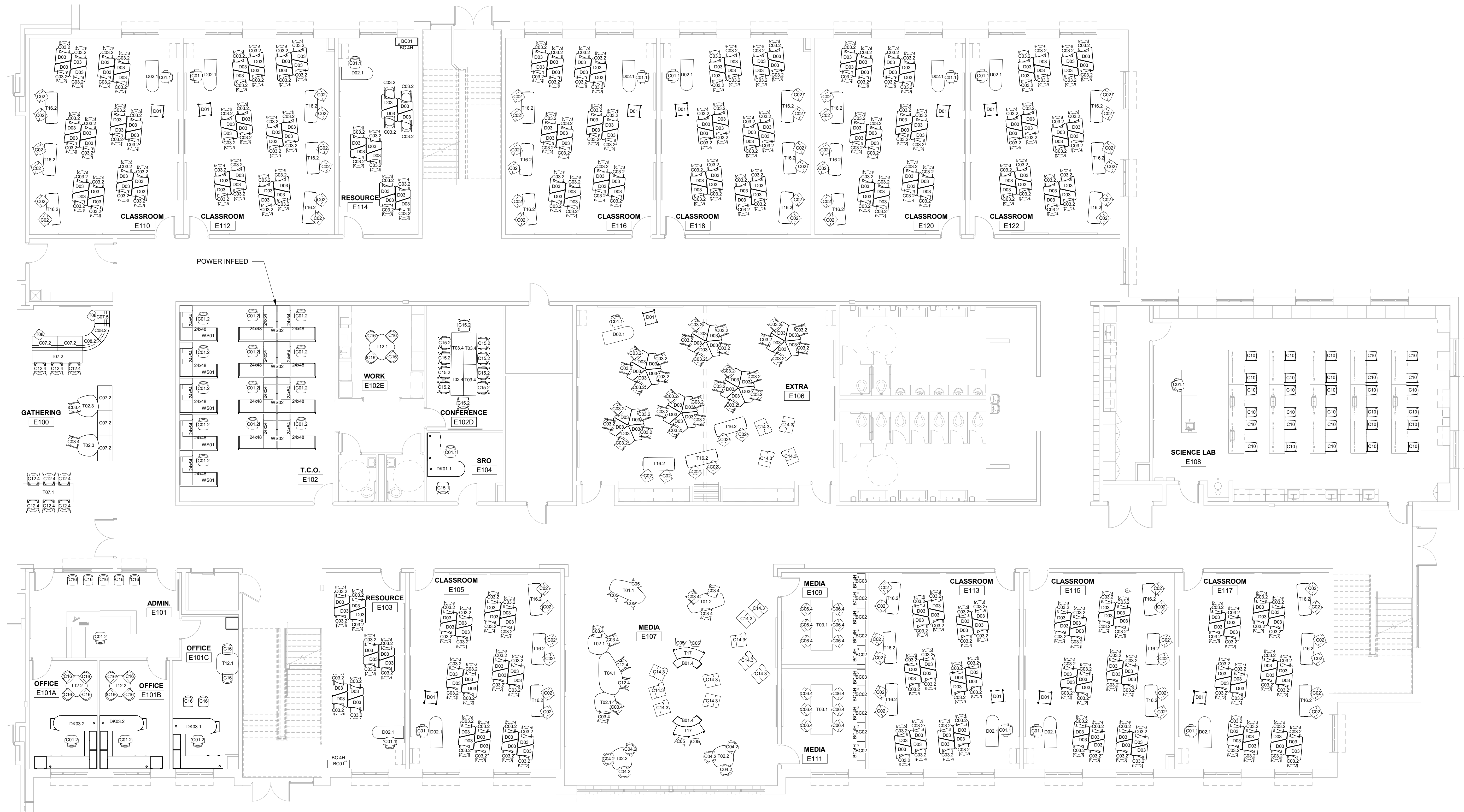
**SECOND FLOOR FURNITURE PLAN - AREA D**

Architect's Project No: Date:

Project Number Issue Date

Drawing No:

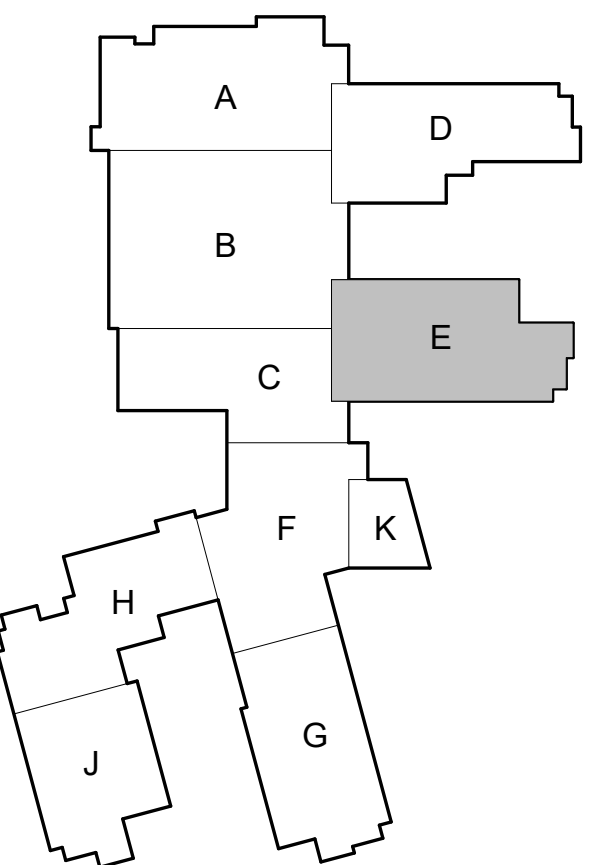
**F4.2**



**FIRST FLOOR FURNITURE PLAN - AREA E**  
 1/8" = 1'-0"



In association with:



KEYPLAN

Revisions:		
#	Description	Date

Designed By: \_\_\_\_\_ Drawn By: \_\_\_\_\_ Checked By: \_\_\_\_\_

The drawings, specifications and other documents, including those in electronic form prepared by Haffer for this project are instruments of service, and may be used solely with respect to this project. The documents may not be reproduced or modified by a third party without first obtaining the express written consent of Haffer. Authorized use of electronic media or file does not guarantee that these files contain complete and accurate information. In order to insure the accuracy of the information contained and that no changes or modifications have been made, these files must be compared to the project's contract documents with stamped and sealed certification and applicable approved modifications.

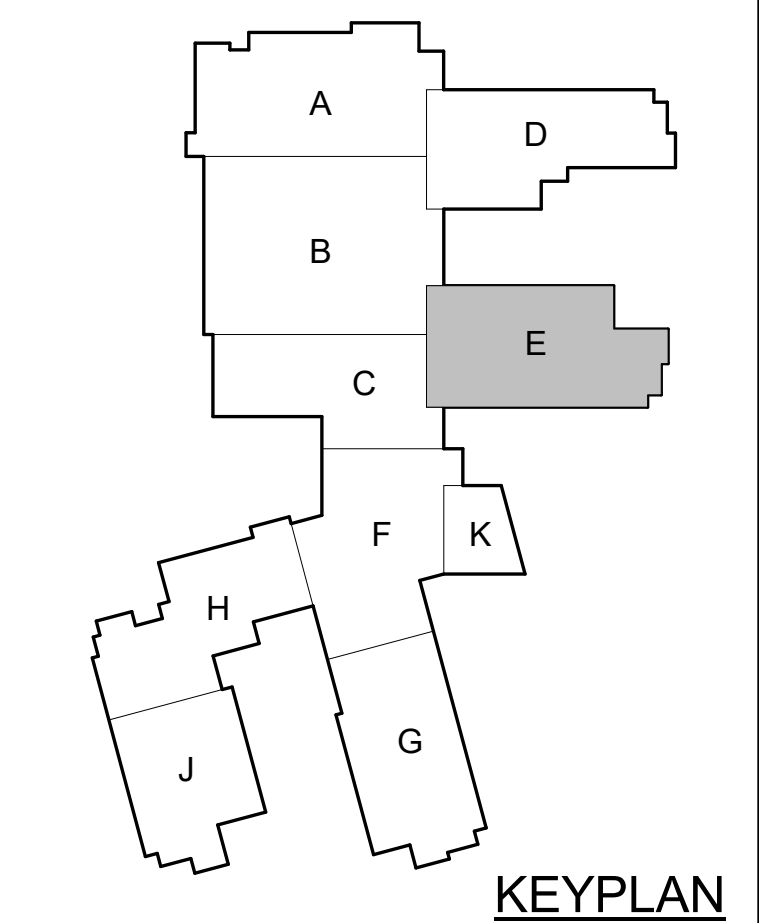
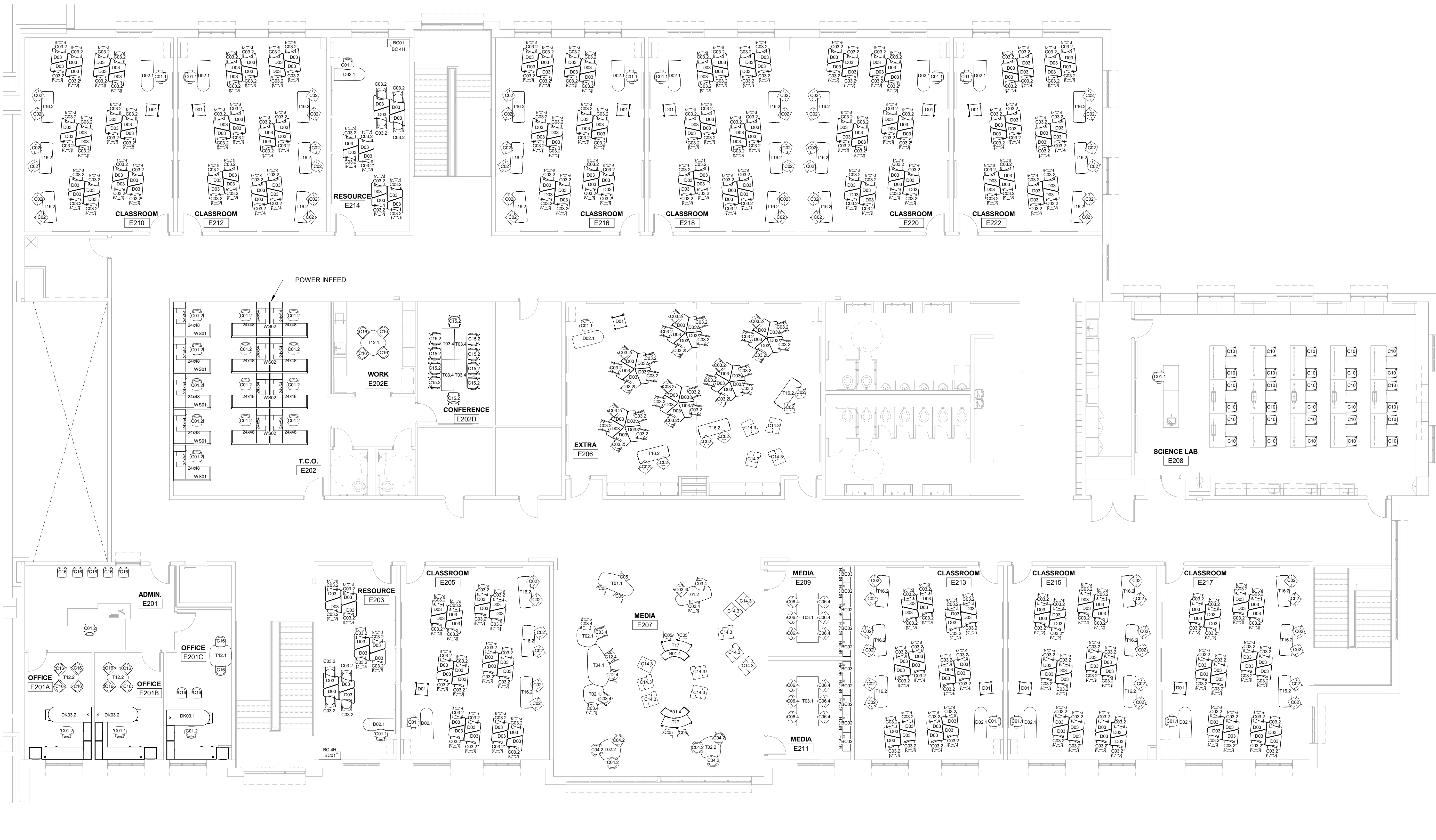
Sheet title:  
**FIRST FLOOR FURNITURE PLAN - AREA E**

Architect's Project No: \_\_\_\_\_ Date: \_\_\_\_\_  
 Project Number \_\_\_\_\_ Issue Date \_\_\_\_\_  
 Drawing No: \_\_\_\_\_

**F5.1**



In association with:



**SECOND FLOOR FURNITURE PLAN - AREA E**  
1/8" = 1'-0"

Revisions:

#	Description	Date

Designed By: \_\_\_\_\_ Drawn By: \_\_\_\_\_ Checked By: \_\_\_\_\_

The drawings, specifications and other documents, including those in electronic form prepared by Haffer for this project are instruments of service, and may be used solely with respect to this project. The documents may not be reproduced or modified by a third party without first obtaining the express written consent of Haffer. Authorized use of electronic media or file does not guarantee that these files contain complete and accurate information. In order to insure the accuracy of the information contained and that no changes or modifications have been made, these files must be compared to the project's contract documents with stamped and sealed certification and applicable approved modifications.

Sheet title:

**SECOND FLOOR FURNITURE PLAN - AREA E**

Architect's Project No: \_\_\_\_\_ Date: \_\_\_\_\_

Project Number \_\_\_\_\_ Issue Date \_\_\_\_\_

Drawing No:

**F5.2**

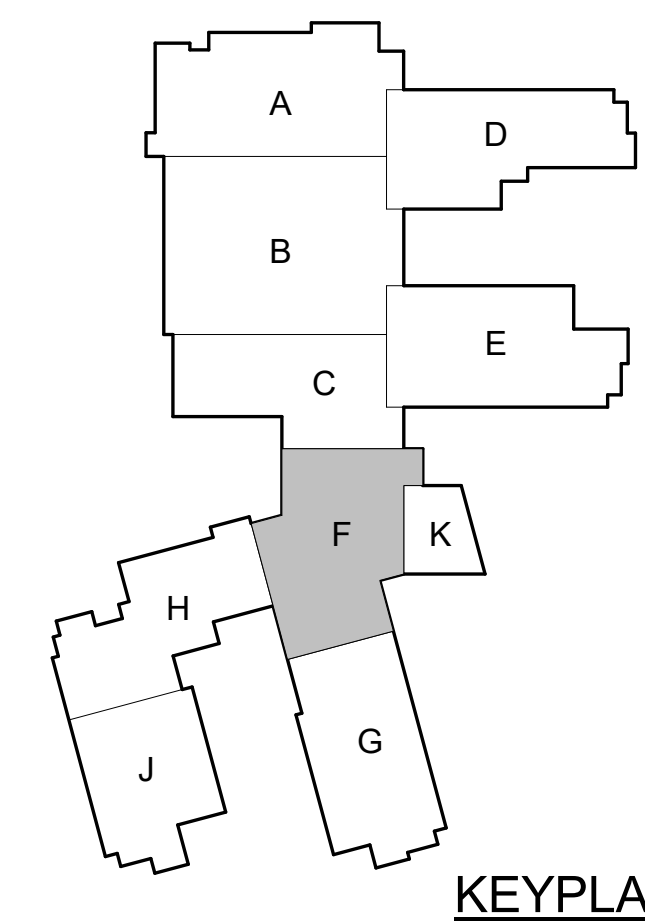
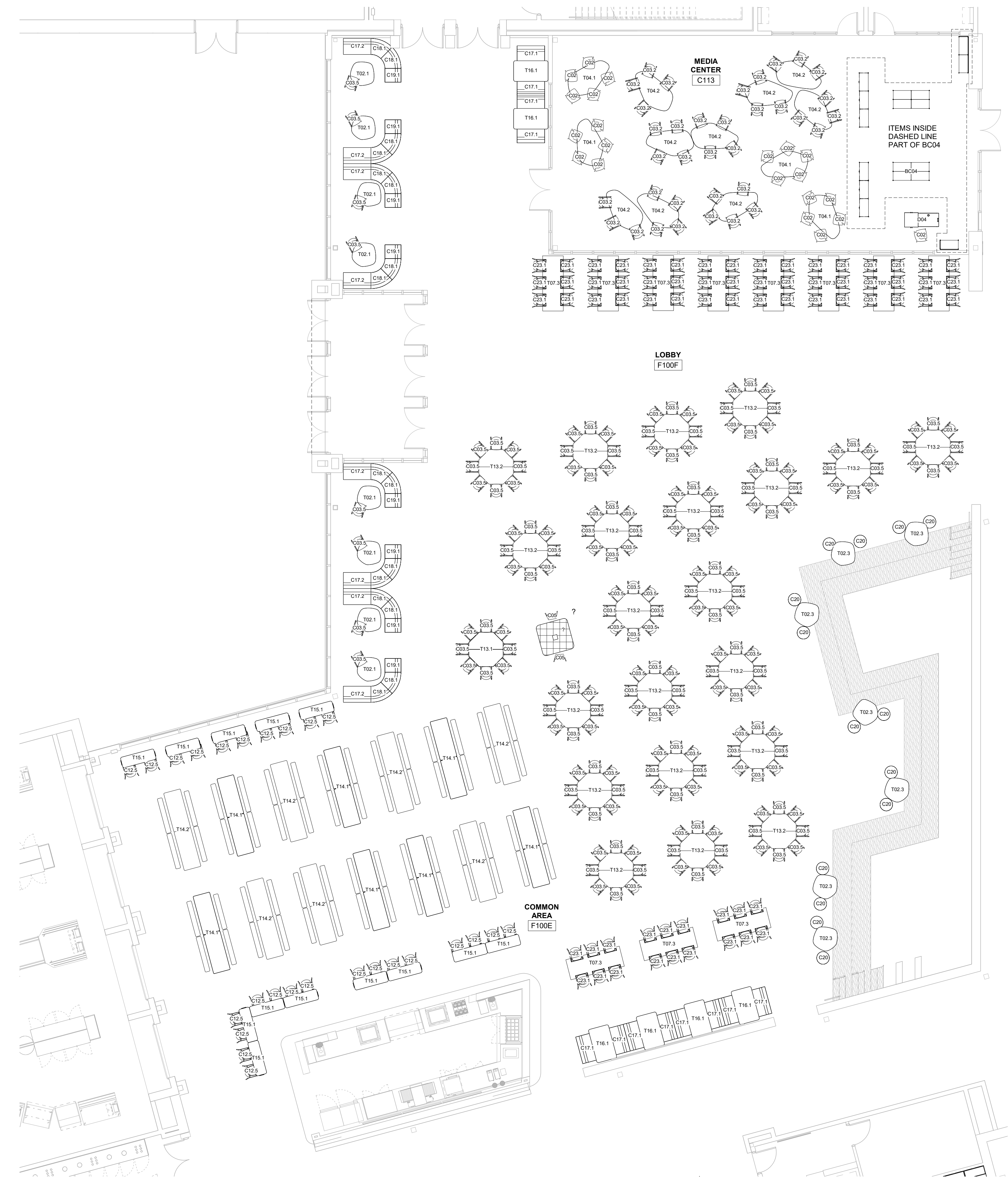


KDE # : BG 22-104

5185 FT. CAMPBELL BLVD  
HOPKINSVILLE, KY 42240

**HAFER**  
architects • designers • engineers  
21 SE Third Street,  
Suite 800  
Evansville, IN 47708  
T: 812.422.4387  
F: 812.422.8776  
www.hafersdesign.com

In association with:



KEYPLAN

Revisions:

#	Description	Date

Designed By: \_\_\_\_\_ Drawn By: \_\_\_\_\_ Checked By: \_\_\_\_\_

The drawings, specifications and other documents, including those in electronic form prepared by Hafer for this project are instruments of Service, and may be used solely with respect to this project. The documents may not be reproduced or modified by a third party without first obtaining the express written consent of Hafer. Authorized use of electronic media or file does not guarantee that these files contain complete and accurate information. In order to insure the accuracy of the information contained and that no changes or modifications have been made, these files must be compared to the project's contract documents with stamped and sealed certification and applicable approved modifications.

Sheet title:  
**FIRST FLOOR FURNITURE PLAN - AREA F**

Architect's Project No: \_\_\_\_\_ Date: \_\_\_\_\_  
Project Number \_\_\_\_\_ Issue Date \_\_\_\_\_  
Drawing No: \_\_\_\_\_

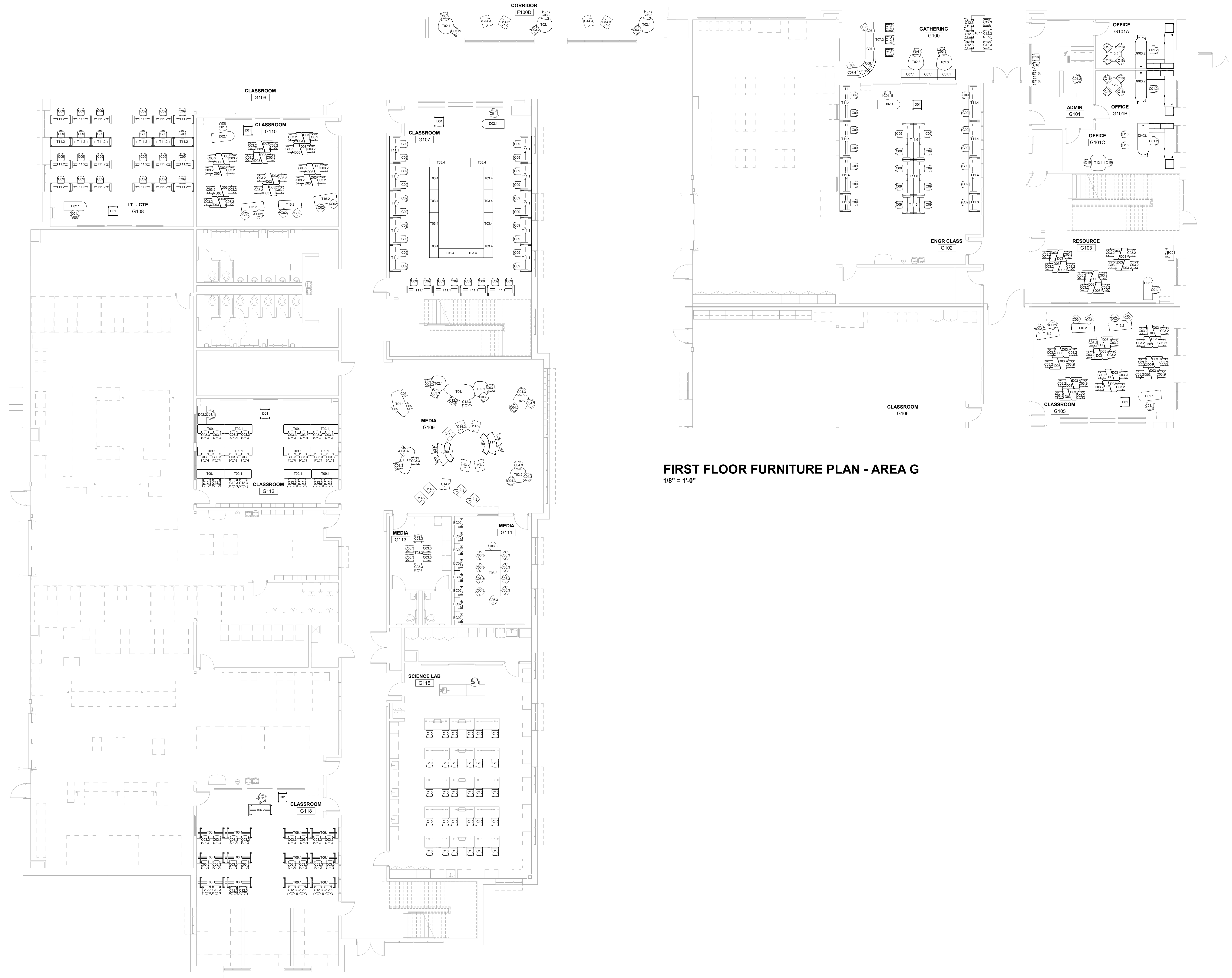
**F6.1**

**FIRST FLOOR FURNITURE PLAN - AREA F**  
1/8" = 1'-0"

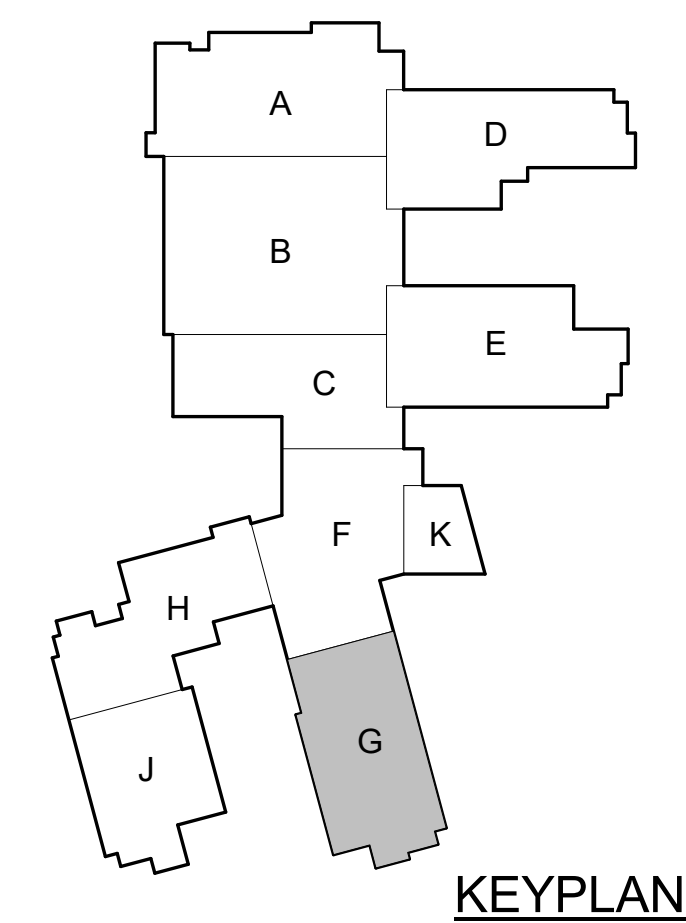




In association with:



**FIRST FLOOR FURNITURE PLAN - AREA G**  
1/8" = 1'-0"



**FIRST FLOOR FURNITURE PLAN - AREA G**  
1/8" = 1'-0"

Revisions:

#	Description	Date

Designed By: \_\_\_\_\_ Drawn By: \_\_\_\_\_ Checked By: \_\_\_\_\_

The drawings, specifications and other documents, including those in electronic form prepared by Haffer for this project are instruments of service, and may be used solely with respect to this project. The documents may not be reproduced or modified by a third party without first obtaining the express written consent of Haffer. Authorized use of electronic media or file does not guarantee that these files contain complete and accurate information. In order to insure the accuracy of the information contained and that no changes or modifications have been made, these files must be compared to the project's contract documents with stamped and sealed certification and applicable approved modifications.

Sheet title:

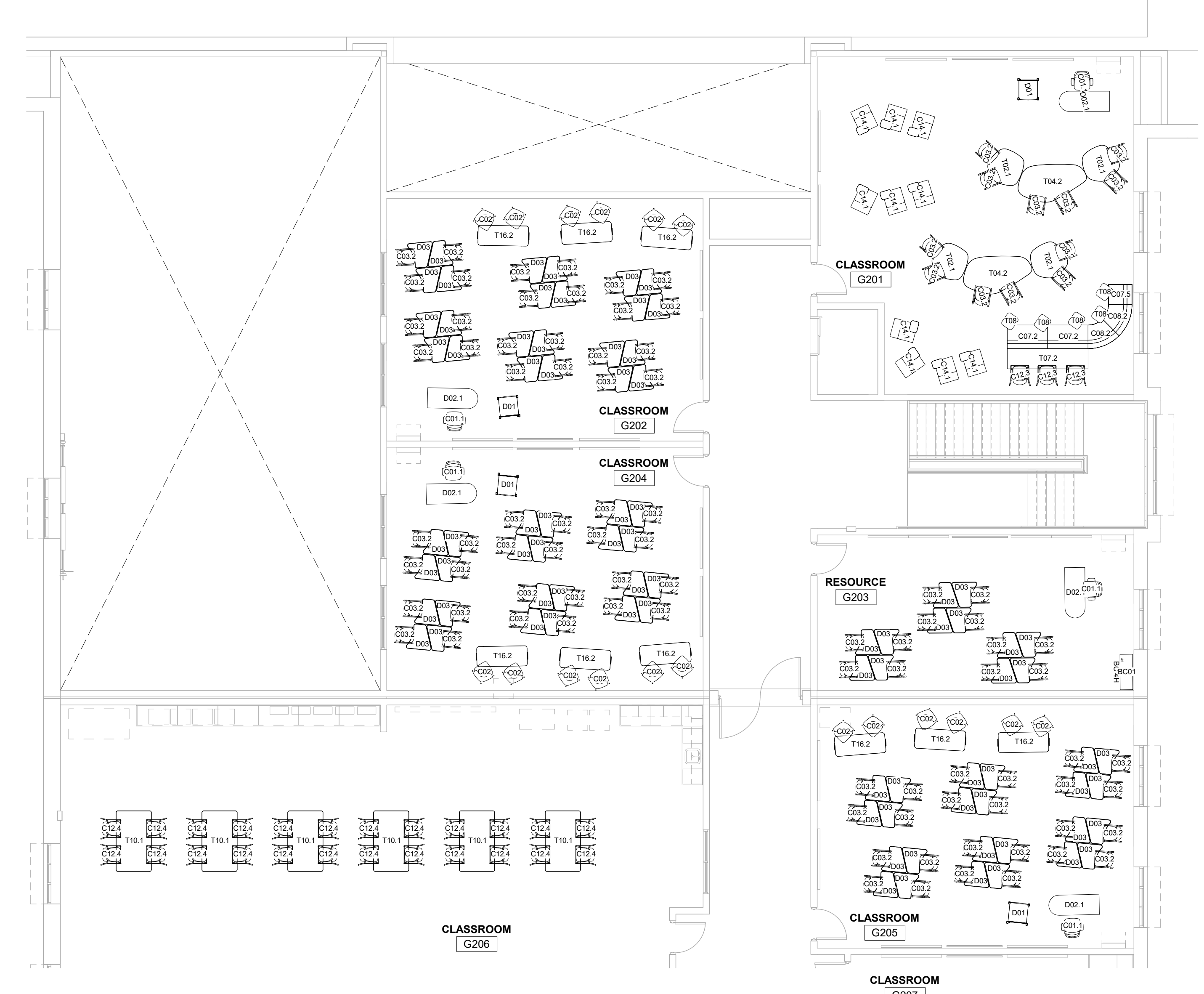
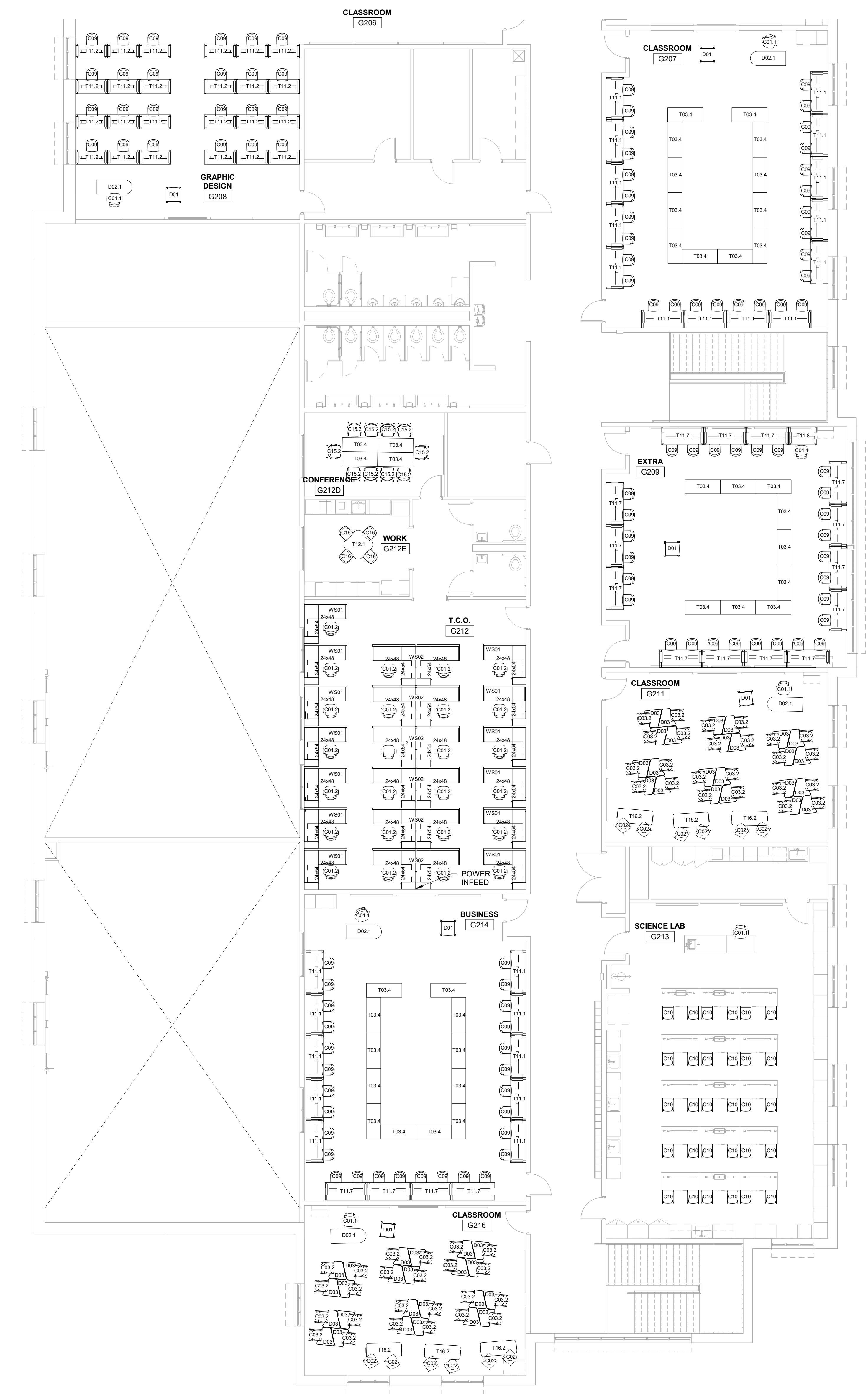
**FIRST FLOOR FURNITURE PLAN - AREA G**

Architect's Project No: \_\_\_\_\_ Date: \_\_\_\_\_

Project Number \_\_\_\_\_ Issue Date \_\_\_\_\_

Drawing No:

**F7.1**



**SECOND FLOOR FURNITURE PLAN - AREA G**  
1/8" = 1'-0"

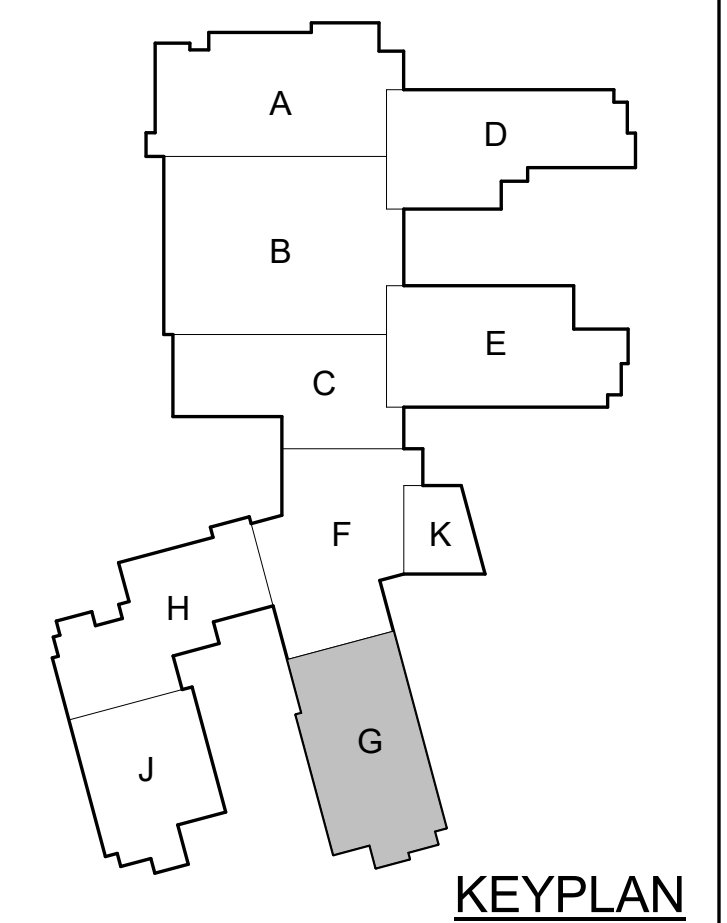


KDE # : BG 22-104

5185 FT. CAMPBELL BLVD  
HOPKINSVILLE, KY 42240

**HAFFER**  
architects • designers • engineers  
21 SE Third Street,  
Suite 800  
Evansville, IN 47708  
T: 812.422.4187  
F: 812.422.8776  
www.hafferdesign.com

In association with:



Revisions:

#	Description	Date

Designed By: Drawn By: Checked By:

The drawings, specifications and other documents, including those in electronic form prepared by Haffer for this project are instruments of Service, and may be used solely with respect to this project. The documents may not be reproduced or modified by a third party without first obtaining the express written consent of Haffer. Authorized use of electronic media or file does not guarantee that these files contain complete and accurate information. In order to insure the accuracy of the information contained and that no changes or modifications have been made, these files must be compared to the project's contract documents with stamped and sealed certification and applicable approved modifications.

Sheet title:

**SECOND FLOOR FURNITURE PLAN - AREA G**

Architect's Project No: Date:

Project Number Issue Date

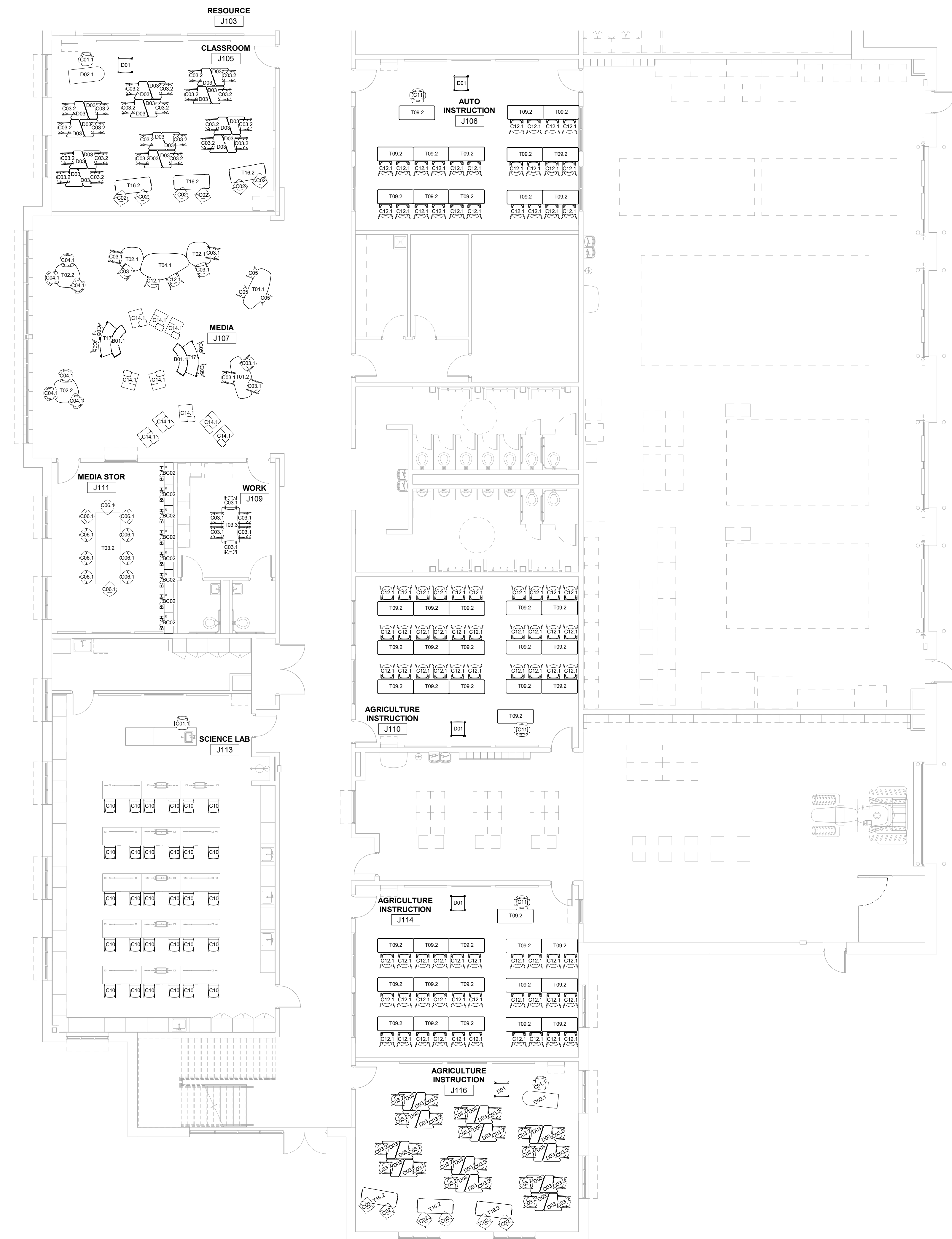
Drawing No:

**F7.2**

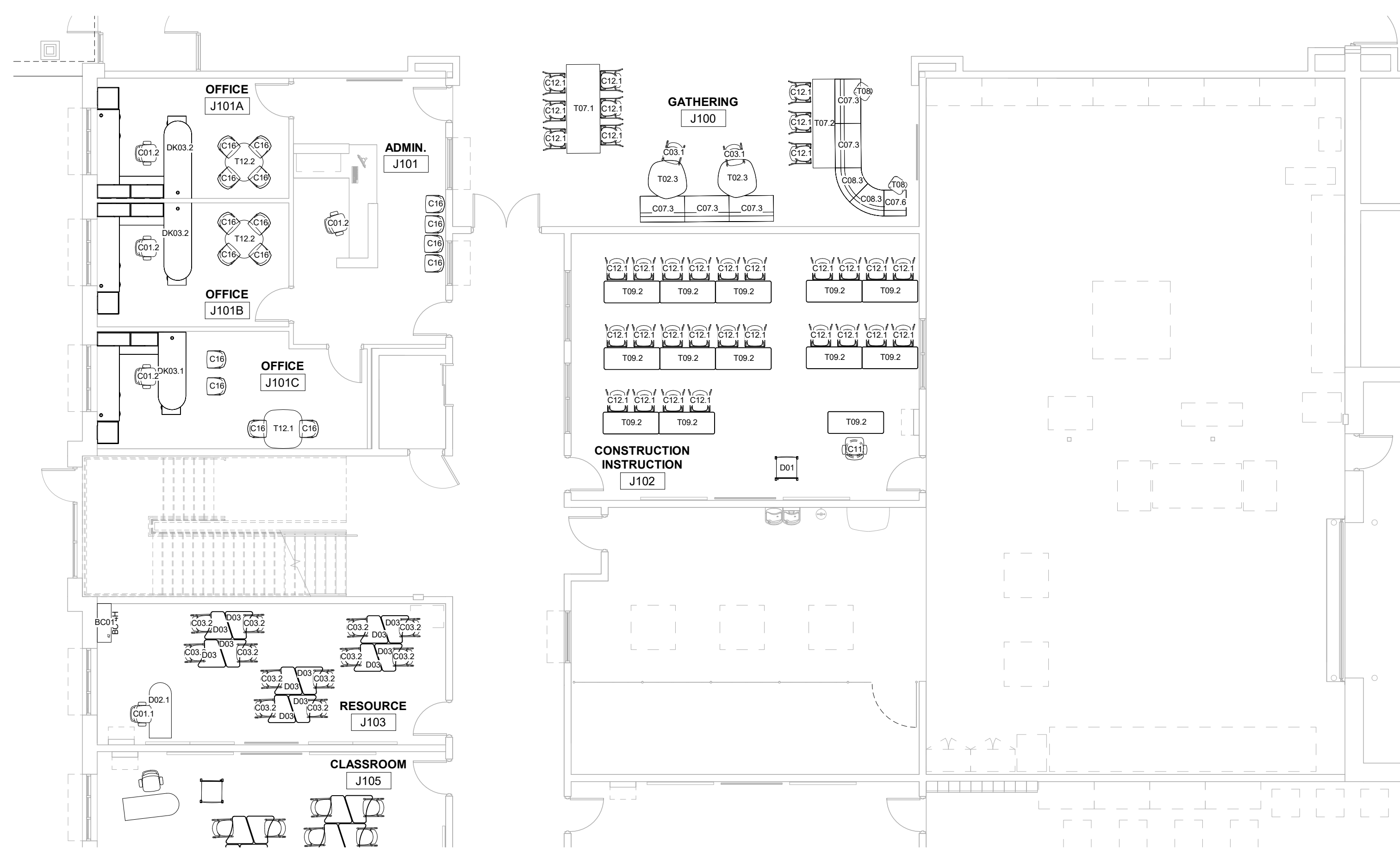
**SECOND FLOOR FURNITURE PLAN - AREA G**  
1/8" = 1'-0"



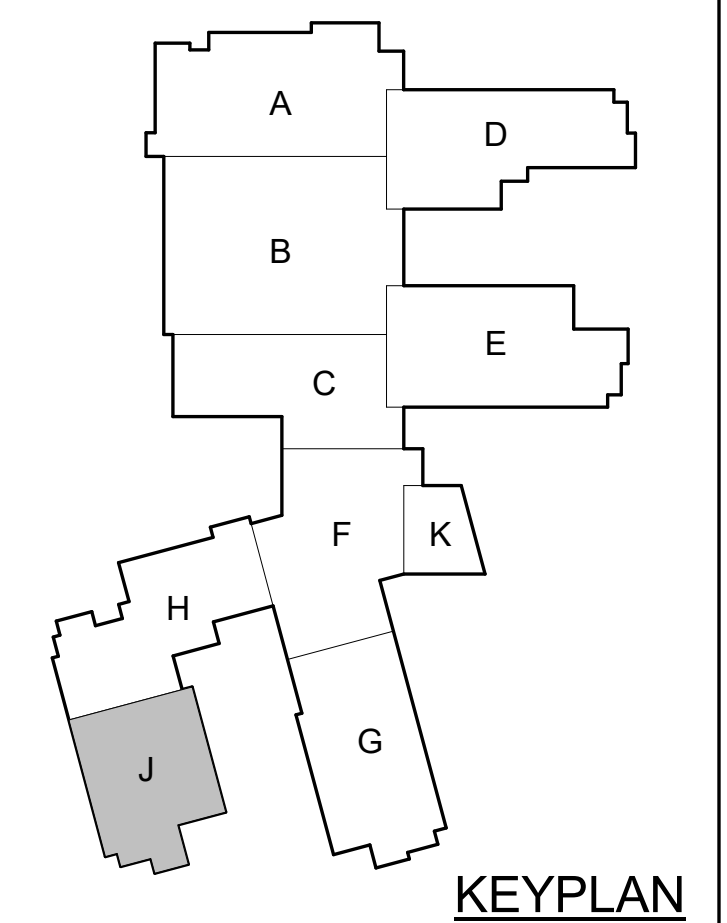
In association with:



**FIRST FLOOR FURNITURE PLAN - AREA J**  
1/8" = 1'-0"



**FIRST FLOOR FURNITURE PLAN - AREA J**  
1/8" = 1'-0"



**KEYPLAN**

Revisions:

#	Description	Date

Designed By: \_\_\_\_\_ Drawn By: \_\_\_\_\_ Checked By: \_\_\_\_\_

The drawings, specifications and other documents, including those in electronic form prepared by Haffer for this project are instruments of service, and may be used solely with respect to this project. The documents may not be reproduced or modified by a third party without first obtaining the express written consent of Haffer. Authorized use of electronic media or file does not guarantee that these files contain complete and accurate information. In order to insure the accuracy of the information contained and that no changes or modifications have been made, these files must be compared to the project's contract documents with stamped and sealed certification and applicable approved modifications.

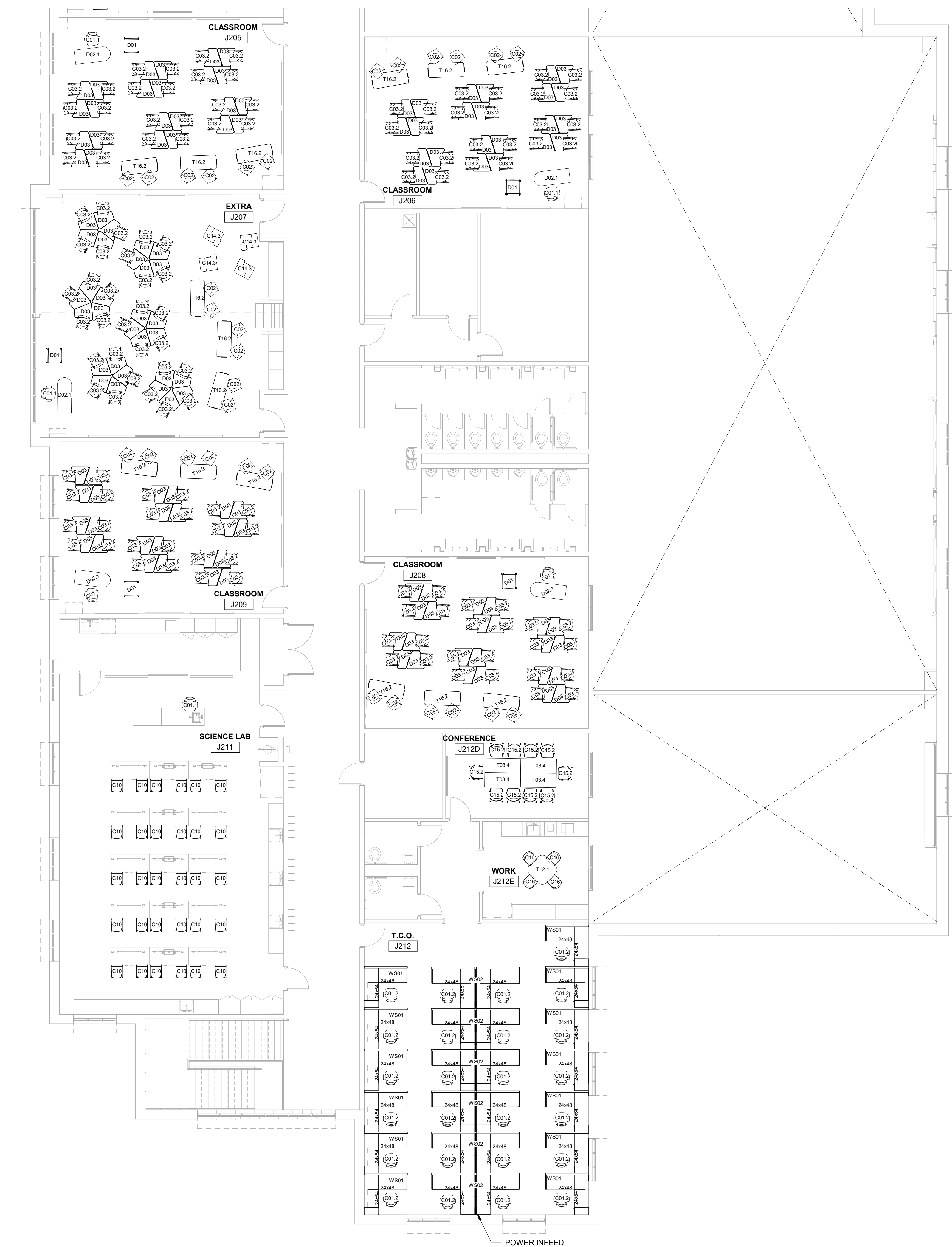
Sheet title:  
**FIRST FLOOR FURNITURE PLAN - AREA J**

Architect's Project No: \_\_\_\_\_ Date: \_\_\_\_\_  
Project Number \_\_\_\_\_ Issue Date \_\_\_\_\_  
Drawing No: \_\_\_\_\_

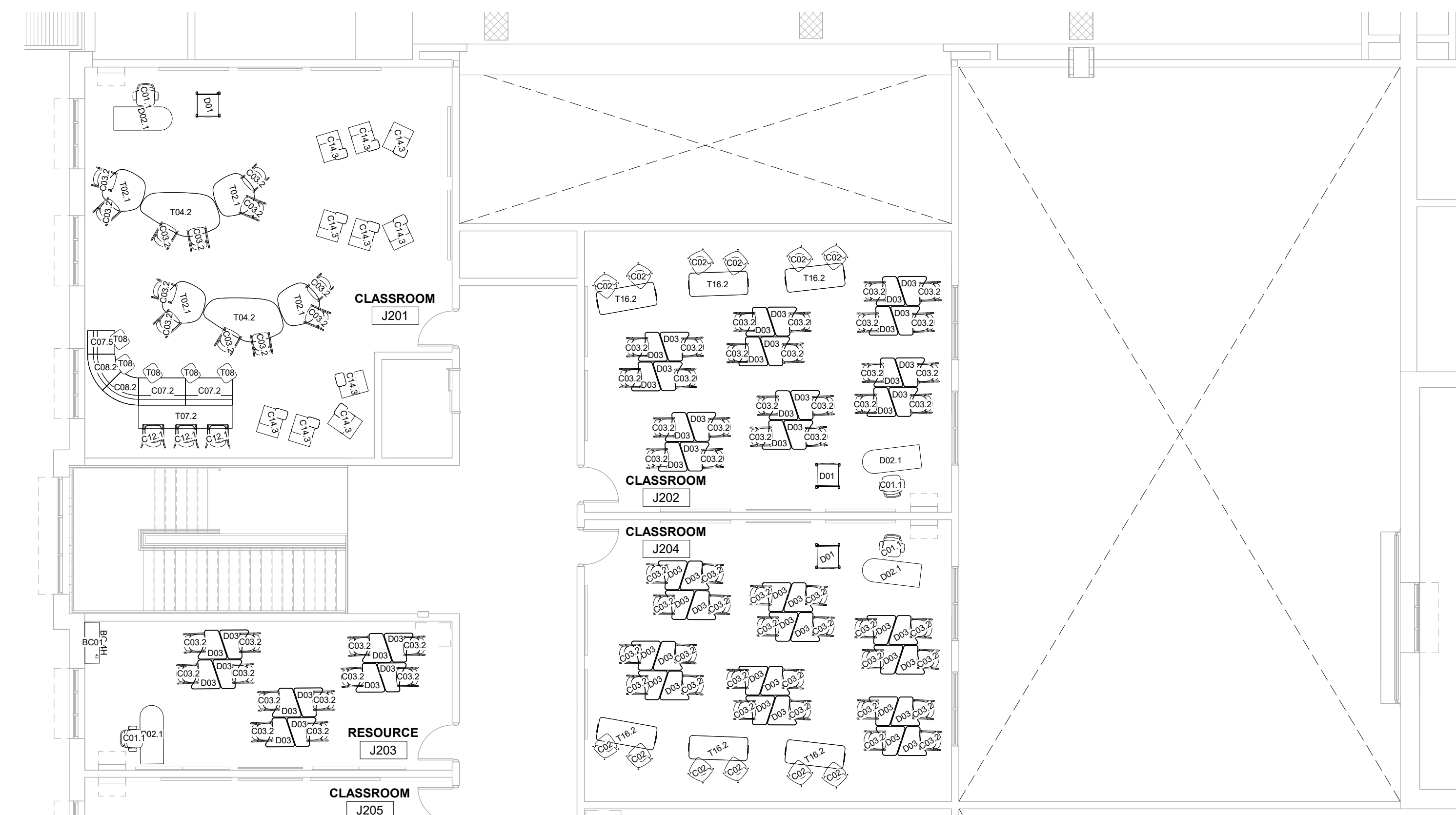
**F8.1**



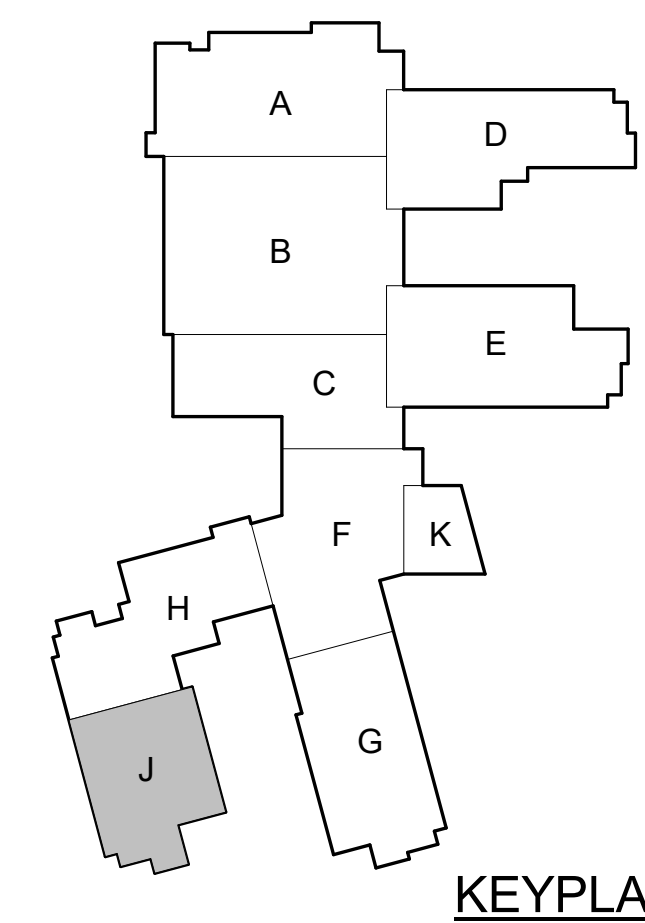
In association with:



**SECOND FLOOR FURNITURE PLAN - AREA J**  
1/8" = 1'-0"



**SECOND FLOOR FURNITURE PLAN - AREA J**  
1/8" = 1'-0"



**KEYPLAN**

Revisions:

#	Description	Date

Designed By: \_\_\_\_\_ Drawn By: \_\_\_\_\_ Checked By: \_\_\_\_\_

The drawings, specifications and other documents, including those in electronic form prepared by Haffer for this project are instruments of Service, and may be used solely with respect to this project. The documents may not be reproduced or modified by a third party without first obtaining the express written consent of Haffer. Authorized use of electronic media or file does not guarantee that these files contain complete and accurate information. In order to insure the accuracy of the information contained and that no changes or modifications have been made, these files must be compared to the project's contract documents with stamped and sealed certification and applicable approved modifications.

Sheet title:

**SECOND FLOOR FURNITURE PLAN - AREA J**

Architect's Project No: \_\_\_\_\_ Date: \_\_\_\_\_

**Project Number** \_\_\_\_\_ **Issue Date** \_\_\_\_\_

Drawing No:

**F8.2**

