

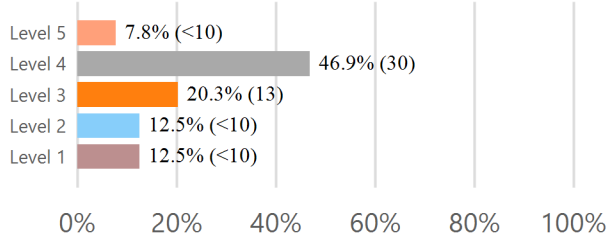


Literacy Based Promotion Act Annual Report of Performance and Student Retention

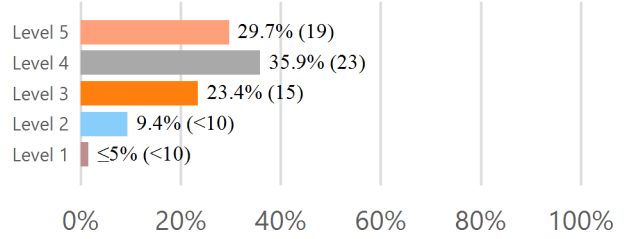
The Literacy Based Promotion Act (LBPA) was enacted to improve the reading skills of Kindergarten through Grade 3 students enrolled in public schools so that every student completing the 3rd grade is able to read at or above grade level. This report displays the components required under [MS Code 37-177-17](#) of the LBPA, which include the number and percentage of students: scoring at each performance level on the state assessment in reading and math, taking the alternative assessments (retest), being retained at each grade level Kindergarten through 8th grade, passing for good-cause exemptions; and any revised district policies for promotion and retention.

District: Amite County School District (0300) School Year : 2023-2024

State Assessment - 3rd Grade ELA

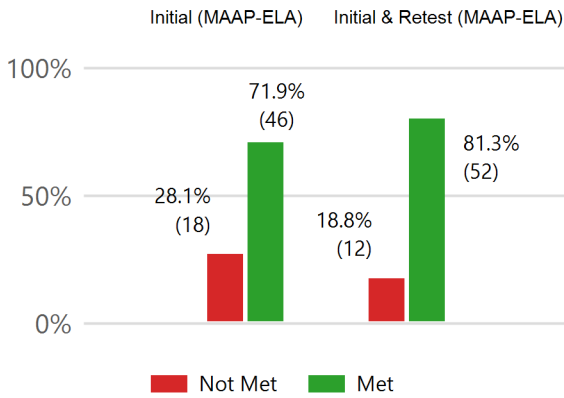


State Assessment - 3rd Grade Math

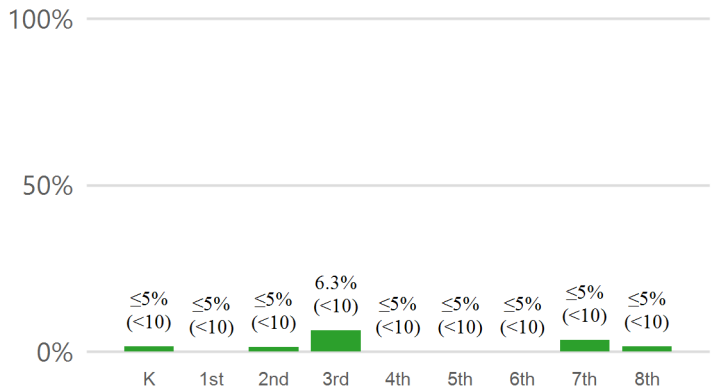


Level 4 and 5 indicate proficiency

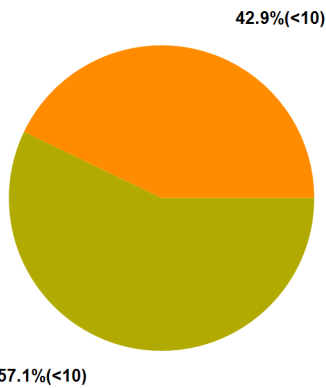
3rd Grade Reading Assessment for Promotion



Students Retained K-8th



Students Promoted by Good Cause Exemption



- ≤5%(<10) ■ A. Limited-English Proficiency with less than two Years in English Learner Program.
- ≤5%(<10) ■ B. Students with disabilities for whom participation in statewide accountability system is not appropriate.
- 57.1%(<10) ■ C. Students with disabilities receiving two years intensive remediation or previously retained.
- 42.9%(<10) ■ D. Students tested on an alternative assessment (for 2023-2024 this is an alternate form of the 3rd Grade MAAP-ELA).
- ≤5%(<10) ■ E. Students receiving two years intensive remediation and previously retained for two years.
- 100% (14) TOTAL**

Local School Board Promotion / Retention Policy:

<https://www.mdek12.org/sites/default/files/reports/LBPA/2024/0300.pdf>

Policy Revision Date : 10/08/2024