

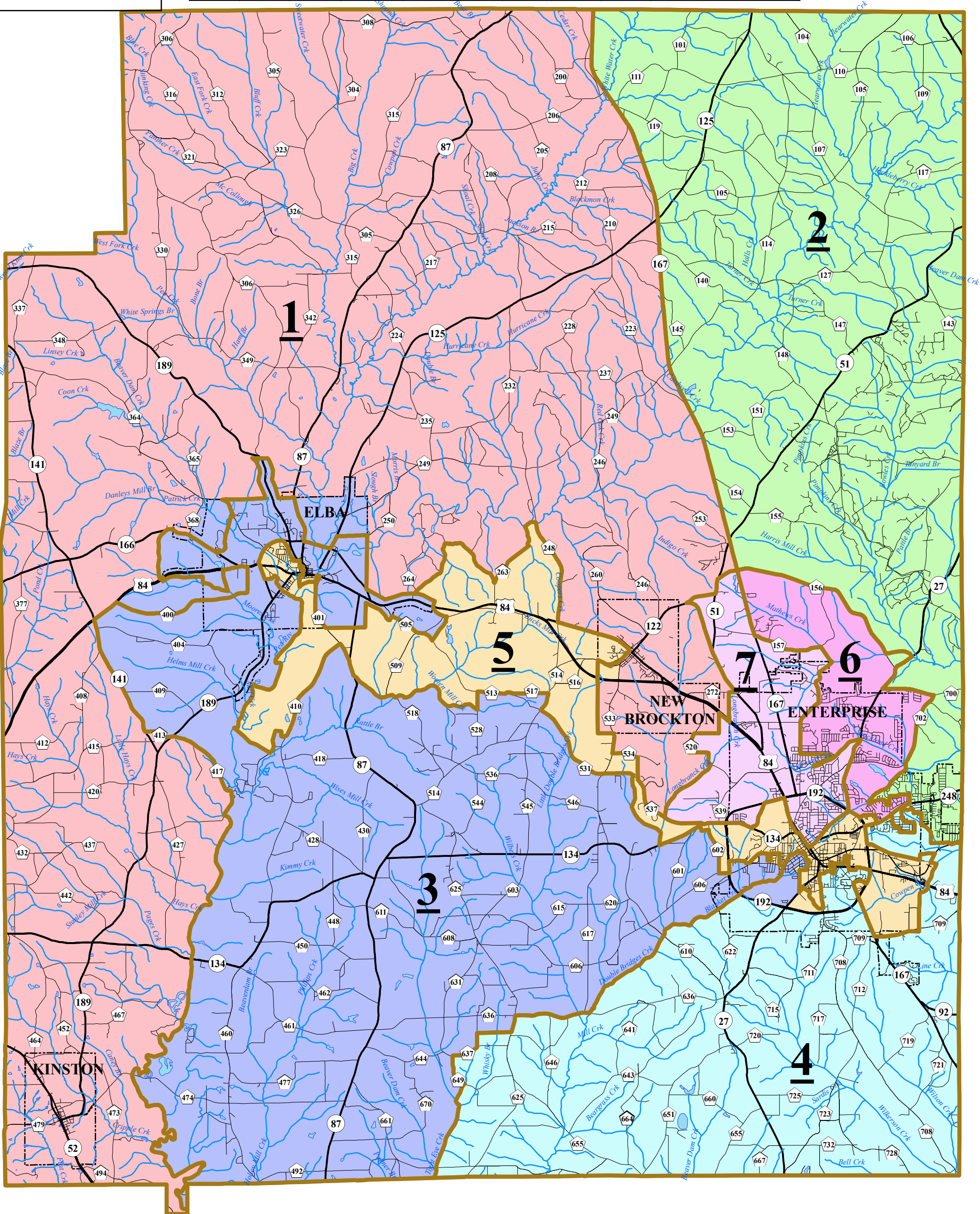
# Coffee County BOE Proposed Districts



## LEGEND

- Existing Districts
- District 1
- District 2
- District 3
- District 4
- District 5
- District 6
- District 7

District	Total Pop	Deviation	Deviation %	White	White %	Black	Black %	Other	Other %	Hispanic	Hisp %
1	7,620	(18)	-0.24%	6,496	85.25%	485	6.36%	639	8.39%	214	2.81%
2	7,480	(158)	-2.07%	5,157	68.94%	1,135	15.17%	1,188	15.88%	677	9.05%
3	7,334	(304)	-3.98%	5,840	79.63%	843	11.49%	651	8.88%	302	4.12%
4	8,019	381	4.99%	5,689	70.94%	1,114	13.89%	1,216	15.16%	938	11.70%
5	7,821	183	2.40%	3,021	38.63%	3,669	46.91%	1,131	14.46%	909	11.62%
6	7,912	274	3.59%	5,748	72.65%	764	9.66%	1,400	17.69%	884	11.17%
7	7,279	(359)	-4.70%	5,129	70.46%	750	10.30%	1,400	19.23%	963	13.23%
<b>Total</b>	<b>53,465</b>			<b>37,080</b>	<b>69.35%</b>	<b>8,760</b>	<b>16.38%</b>	<b>7,625</b>	<b>14.26%</b>	<b>4,887</b>	<b>9.14%</b>



0 4 8 Miles

