



Clarksdale Collegiate
PUBLIC CHARTER SCHOOL

Return to School Plan

Safely Creating a **Structured, Ambitious,**
and **Jubilant** Learning Community

2020-21 School Year

Return to School Plan updated 7/31/2020

SAFETY AND CONSISTENCY WILL DRIVE OUR SUCCESSFUL OPENING

Clarksdale Collegiate Families & Stakeholders,

Over the last few months, I've said the word "unprecedented" more times than I could possibly count. Our country, state, and community are facing the first global pandemic of our lifetime. Many of us have had family members affected by COVID-19, and we are all living with the stress of uncertainty.



School is an integral component of our community. Schools serve as centers of learning, places for scholars to socialize and interact with peers and adults, as well as resource spaces for socioemotional growth and support. Our team recognizes that many parents and guardians cannot return to work unless our campus is open for scholars. As you read our reopening plan, we hope you will find that it is grounded in safety, flexibility, and the latest scientific information available.

Above all, we value **safety**.

This plan has been carefully crafted with guidance from a number of official resources, such as the Centers for Disease Control and Prevention (CDC), the Mississippi State Department of Health (MSDH), and the Mississippi Department of Education (MDE). This guidance has evolved and will continue to evolve as more and more data is collected on COVID-19.

Our phased plan is built around **consistency**.

For all the ways that school and life will look different this year, the most important aspects have not changed and will be consistent from the first day we opened our doors. We will provide a structured, ambitious and jubilant learning experience for all scholars. We have ambitious academic goals, and we will work relentlessly alongside our scholars and you to achieve them. We will make learning fun and create space for jubilation, regardless of how we are gathering together. The commitment that we made to each other in the Clarksdale Collegiate Covenant is still strong and true.

Thank you for your patience, understanding, and trust.

With jubiliante,

A handwritten signature in black ink, appearing to read 'Amanda Johnson'.

Amanda Johnson

WHO WE ARE AND WHAT MATTERS

All scholars excel within **structured, ambitious, and jubilant** environments.

Whether our school structure is virtual or in-person, we will always prioritize creating a structured environment for our scholars to learn.

With the hard work and support of our staff and families, we believe that we can push our scholars to meet and achieve ambitious goals for the year in any learning format.

Learning is fun! We want our scholars to believe that learning can also be fun virtually.



DECISION-MAKING PRINCIPLES

Due to the ever changing nature of our country's health pandemic, our team developed a set of principles to support us in making strategic decisions regarding how we operate this school year. These principles were used in our planning for the start of the school year and will be used ongoing as we decide when to pivot to other learning experiences for the year.



- Follow national and state guidance regarding when to open the building and how to operate in the best ways to keep our scholars and staff safe including cleaning procedures, physical distancing, personal protective equipment, etc.
- Align virtual instruction with our curriculums and proven instructional playbook.
- Adapt and continue traditions and rituals that support in creating a structured, ambitious, and jubilant school environment.
- Provide scholars, families, and staff time to adjust to the changing school structure by planning in 4-6 week timeframes.
- Provide scholars and families with the tools and training they need in order to be successful with virtual learning.

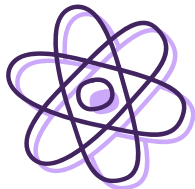
SCHOOL STRUCTURES

The Mississippi Department of Education (MDE) has provided the following school structures as guidance for schools to operate within for the 2020-21 school year. We are prioritizing the safety of our scholars, staff, and families and will continue to monitor COVID-19 throughout the year to help us determine when to pivot to a different structure.



Virtual:

All instruction will be provided online using online platforms. Assignments will be both virtual and using traditional paper/pen methods. There will be an in-person orientation and regular in-person check-ins required. Assessments will be given in-person.



Hybrid:

Most instruction will be provided online using online platforms. Assignments will be both virtual and using traditional paper/pen methods. The school will be open for scholars, but will operate under strict social distancing standards. Scholars who are in-person will have a safe place to work and will be supported and monitored by school staff. Depending on the safety guidance, the in-person support will either be for scholars who need the most support or will follow an alternating schedule to allow for all scholars to be in-person for a limited schedule.



In-Person:

All scholars will be able to return to school on the same schedule. Instruction will return to an in-person model, but scholars will continue to work on the online platforms to submit assignments.

VIRTUAL LEARNING PHASE DETAILS

Virtual learning is new for our scholars, families, and our staff. To ensure that learning is not disrupted for scholars this year, we began our year in a virtual format. While we know that in-person learning is the most ideal for



scholar learning, starting our school year virtually provides our scholars, families, and staff with the opportunity to learn the habits and practices that are needed to be successful virtually. It is our hope that our virtual start will provide us with the necessary foundation

needed to pivot when needed as we continue to monitor our ongoing pandemic.

The day includes live sessions that last for four hours in the morning and independent work sessions in the afternoon. The daily morning sessions include 240 instructional minutes and the daily afternoon sessions are designed to take the typical scholar about 150 minutes. The virtual day includes at least 390 minutes of instructional time.

Monday - Friday		
<p>AM</p> <p>Synchronous</p>	<p>Morning Chat Literacy Math Movement & Music Science/Social Studies</p>	<p>Scholars with an IEP, ELL plan and/or 504 plan receive push-in support during the morning sessions.</p>
<p>PM</p> <p>Asynchronous</p>	<p>Blended Learning Programs Independent Work Independent Reading Enrichment</p>	<p>Scholars with an IEP, ELL plan and/or 504 plan receive individual or small group sessions based on their plan.</p>

VIRTUAL LEARNING EXPECTATIONS

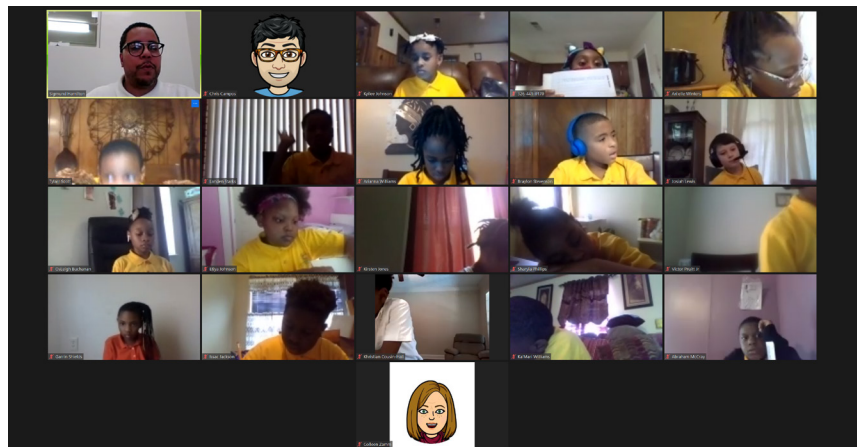
Scholars will receive approximately 4 hours of daily online direct instruction with their teacher through online platforms. During live online instruction scholars are required to adhere to the school's behavior expectations including dress code.

Independent work will be completed asynchronously in the afternoon. Scholars and families will check posts daily in Google Classroom. Expectations and daily assignments will be posted by 12:00 pm Monday through Friday.

Scholars will also be responsible to complete online assignments and independent practice daily. This includes but is not limited to, written assignments, online quizzes, or reading.

Daily assignments should be submitted by 4:00pm daily. If a teacher is extending work beyond the current day, s/he will specify when the work should be submitted.

Expectations for scholar behavior and interactions virtually is the same as the expectation as if in the classroom.



Attendance will be taken twice daily, AM and PM. Teachers will take attendance in the morning when scholars login for daily, live instruction. Afternoon attendance will be taken once daily assignments are submitted.

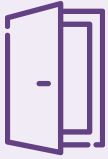
SCHOLAR CHECK-INS

Clarksdale Collegiate believes that nothing can replace in-person time with scholars. While we can't be with scholars every day, we do believe it is important to have regular in-person check-ins with each scholar. Clarksdale Collegiate will hold small group check-ins with scholars every 4 weeks. We are prioritizing the activities that are most important to happen in-person which are assessments, technology check-ups, and recognition of accomplishments.

In order to do check-ins safely, the check-in times will be for enrolled scholars only during their scheduled check-in time. Scholars will bring their laptop for check-ins.

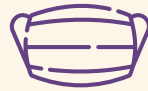


SAFETY MEASURES AND PRECAUTIONS



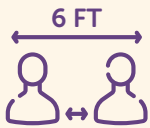
Entry Screening For Staff

We have daily temperature checks for all staff as they are entering the building each day.



Mandatory Masks

All staff are required to wear masks throughout the day while they are on our campus.



Social Distancing

Teachers are teaching alone in their classrooms

Staff-wide meetings occur virtually



Deep Cleaning of Facilities

Door knob and high touch areas disinfected every 90 minutes

Deep cleaning every night, including disinfectant fogging



Increased Hand-Washing

Per CDC recommended guidelines, we are encouraging our staff and visitors to wash their hands more frequently and for a duration of at least 30 seconds.



No Visitor Policy

Families can take advantage of curbside pick-up should they need to pick-up or drop off materials or tech equipment. This allows them to park outside, text our number to let us know they are here and their need, and for a staff member to bring their requests to their car safely.

FOOD SERVICE DISTRIBUTION

We have developed a process for ensuring our scholars continue to receive quality and nutritious meals throughout the school year. Each week, our scholars are able to pick up their meals for the week which includes breakfast, lunch, and snacks.

Preparation Process

- Our meals are cooked and prepared on campus, individually sealed, properly stored, and labeled with appropriate consumption dates.
- Families are also provided with storage and reheating instructions each week when they pick up their scholar's meals.



Pick-Up Process

- Weekly pick-ups
- All families are able to pick-up meals on Sunday between 12-3pm.
- Families who are unable to pick-up their scholar's meals on Sunday are able to take advantage of our curbside option on the following day.
- Contactless pick-up process



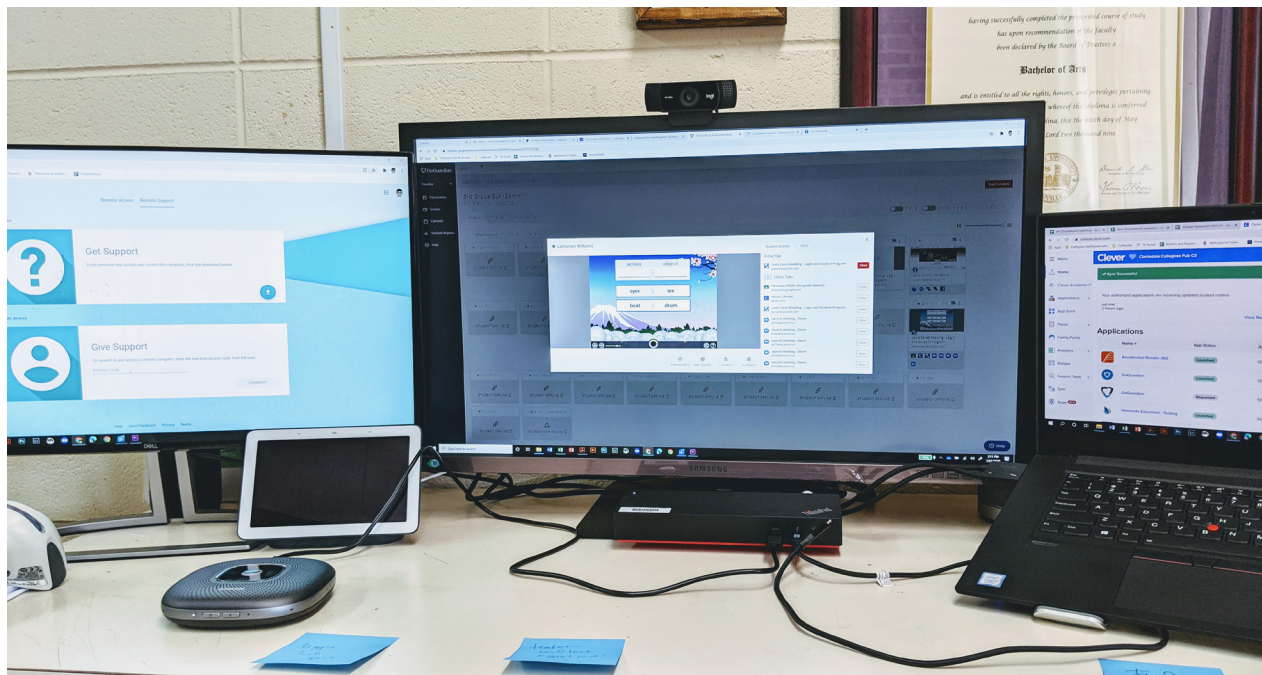
Video demonstrating the parent food pick-up process is available on YouTube. Click the video thumbnail to watch.

TECHNOLOGY AND SUPPORT

Our school took additional steps to make sure that every scholar and family has access to:

- A school-issued Chromebook
- Internet Access
- Headphones with Microphone
- Remote access to blended learning applications
- Supplemental instructional materials

We are also prioritizing our technical support of families, scholars, and staff. Through a dedicated number, families are able to call or text during our virtual learning day and speak to a member of our team. Each team member is equipped with all account credentials, access to viewing the screens of each device remotely, and the ability to initiate a remote control session to demonstrate the steps needed to login to and access various applications.



COMMUNICATION AND UPDATES

We believe that communication with families and key stakeholders is very important throughout this process. Our team is working hard to ensure that we send out regular communications to families through email and social media, that we communicate important information directly to scholars and families through our morning chat videos, and that our teachers have the most up-to-date information regarding our instructional models.

Throughout this process we are collecting information from our internal systems regarding device usage, attendance, family feedback, and staying updated on state and national news and guidelines so that we can keep our families, our board, and the community updated on our next steps.

Our website (clarksdalecollegiate.org) will always contain the most up-to-date information regarding the details of our school year. You can reach out to info@clarksdalcollegiate.org with any questions.



This page has been left blank intentionally

This page has been left blank intentionally



Clarksdale Collegiate
PUBLIC CHARTER SCHOOL

1012 West 2nd Street
Clarksdale, MS 38614
662-351-0106

info@clarksdalecollegiate.org
www.clarksdalecollegiate.org