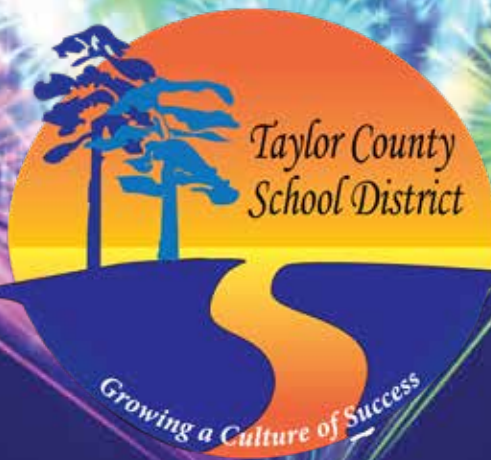


*Ignite the Spark!*



*Taylor County District Calendar  
2024-2025*

# GREETINGS



Welcome to the 2024- 2025 school year. This past year brought with it a lot of stress and financial uncertainty. Nevertheless, we were able to come together as a community and overcome the fallout of a major hurricane

AND the closure of one of our biggest employers. Although this last year was difficult, it highlighted our strength as a community and the ability to come together in times of need. After all, it is that resiliency that makes us who we are!

While coming together is a wonderful thing, it is the sticking together that can truly transform our climate, culture, and community at large. This requires us as educators, parents, staff, and community members to work towards common goals. I hope that you will join us in ensuring that our school system is one where everyone feels safe, knows they are valued, and knows they will be held to high expectations.

We strive to make our schools the best option for the students in Taylor County, a place where caregivers know their children are safe and cared for, and where they know their children will be expected to grow, not only academically, but socially and mentally as well. We also want our school system to be a place where employees want to come to work because they know they, and their work, are valued. Finally, we hope to have parents partner with us so that together we can make the best decisions for our students. We can accomplish so much more when we work together to reach each of these goals.

I look forward to working with you to reach these goals and to ensure Taylor County School District remains a source of pride for our community. Remember that together we can remain #TaylorCountystrong!

Sincerely,  
Alicia Beshears

# SCHOOL START TIMES

| SCHOOL                     | START      | END     |
|----------------------------|------------|---------|
| Steinhatchee School        | 7:55 AM    | 2:45 PM |
| Taylor County Primary      | 8:15 AM    | 2:45 PM |
| Taylor County Elementary   | 8:15 AM    | 2:45 PM |
| Taylor County Middle       | 8:20 AM    | 3:00 PM |
| Taylor County High         | 8:30 AM    | 3:15 PM |
| Big Bend Technical College | Times Vary |         |

# IMPORTANT NUMBERS

|                                 |              |
|---------------------------------|--------------|
| Taylor County School District   | 850-838-2500 |
| Steinhatchee School             | 352-498-3303 |
| Taylor County Primary School    | 850-838-2506 |
| Taylor County Elementary School | 850-838-2530 |
| Taylor County Middle School     | 850-838-2516 |
| Taylor County High School       | 850-838-2525 |
| Big Bend Technical College      | 850-838-2545 |

# BIG BEND TECHNICAL COLLEGE REGISTRATION WINDOWS

**Spring 24/25 Registration**  
Oct. 10, 2024 - Dec. 20, 2024

**Fall 25/26 Registration**  
Apr. 1, 2025 - Aug. 1, 2025

# TABLE OF CONTENTS

- IMPORTANT DATES
- PROGRESSION TO EACH GRADE
- MTSS
- ESE AND 504 INFORMATION
- OPPORTUNITIES FOR STUDENTS
- CAREGIVER INFORMATION AND RESOURCES
- WORDS YOU NEED TO KNOW
- WHAT IS TITLE I
- CAREGIVER SELF-ASSESSMENT
- DRESS CODE
- FOCUS PARENT PORTAL

# ENROLLING IN SCHOOL


Visit the school site of your child to enroll or call the district office at 850-838-2500 to identify your student's school.

### What you need:

- Birth Certificate
- Physical
- Shot Record (Form 680)
- Students must turn five on or before September 1st to be eligible to enter Kindergarten.
- By law, students must attend school to the age of 16, and caregivers or guardians may be prosecuted if students do not attend.



# AUGUST 2024

| SUNDAY  | MONDAY                        | TUESDAY | WEDNESDAY  | THURSDAY   | FRIDAY                       | SATURDAY |
|---|-------------------------------|---------|--|--|------------------------------|----------|
|  <p><b>AUGUST IS...<br/>BACK TO SCHOOL</b></p> |                               |         |  | 1  | 2<br><br>TEACHERS' FIRST DAY | 3        |
| 4   | 5                             | 6       | 7<br><br>BBTC FALL TERM BEGINS<br>TCHS UPPERCLASSMEN<br>SCHEDULE PICKUP/<br>PARKING PERMIT SALES | 8<br>STEINHATCHEE<br>SCHOOL ORIENTATION<br><br>TCHS FRESHMAN<br>ORIENTATION<br><br>TCPS PRE-K - 2<br>ORIENTATION 3:00-5:00<br>TCES ORIENTATION 1:00-3:00 | 9<br><br>TCMS ORIENTATION    | 10       |
| 11  | 12<br><br>STUDENTS' FIRST DAY | 13      | 14   | 15   | 16                           | 17       |
| 18  | 19                            | 20      | 21   | 22   | 23                           | 24       |
| 25  | 26                            | 27      | 28   | 29<br><br>STEINHATCHEE OPEN<br>HOUSE/TITLE I ANNUAL<br>MEETING   | 30                           | 31       |



# ASSESSMENT SCHEDULE

August 5-September 27, 2024

- FAST PM1
  - Grades K-2 ELA
  - Grades K-2 Mathematics

August 12-September 27, 2024

- FAST PM1
  - Grades 3-10 FAST ELA Reading
  - Grades 3-8 FAST Mathematics

September 9-October 4, 2024

- FAST Retake
  - Grade 10 ELA Reading Retake
- End-of-Course (EOC) Assessments
  - Algebra 1
  - Geometry
  - Biology 1
  - Civics
  - U.S. History

September 23-October 11, 2024

- Florida Alternate Assessment
  - Performance Task
  - Grade 10 ELA Makeup
  - Algebra 1 Makeup

December 2-20, 2024

- EOC Assessments
  - Algebra
  - Geometry
  - Biology 1
  - Civics
  - U.S. History
- FAST Retake
  - Grade 10 ELA Reading Retake



December 2, 2024-January 24, 2025

- FAST PM2
  - Grades K-2 FAST Reading & Mathematics
  - Grades 3-10 FAST ELA Reading
  - Grades 3-8 FAST Mathematics

February 24-April 11, 2025

- Florida Alternate Assessment
  - Performance Task
  - Grades 3-8 ELA & Mathematics
  - Grades 4-8 Writing
  - Grades 5 & 8 Science
  - EOC Assessment (Civics)

March 10-April 25, 2025

- Florida Alternate Assessment-Performance Task
  - Grades 9 & 10 ELA
  - Grades 9 & 10 Writing
  - EOC Assessments

March 31-April 11, 2025

- Writing
  - Grades 4-10

April 14-May 30, 2025

- FAST PM3
  - Grades K-2 ELA
  - Grades K-2 Mathematics

May 1-30, 2025

- FAST PM3
  - Grades 3-10 FAST ELA Reading
  - Grades 3-8 FAST Mathematics
  - Statewide Science Assessment
  - Grades 5 & 8 Science
- End-of-Course (EOC) Assessments
  - Algebra
  - Geometry
  - Biology 1
  - Civics
  - U.S. History
- FAST Retake
  - Grade 10 ELA Reading Retake



# IMPORTANT DATES

August

- 2 - First day for teachers
- 12 - First day for students

September

- 2 - Labor Day Holiday

October

- 11 - Last day of 1st nine weeks
- 14 - Students Holiday/Staff Professional Learning

November

- 11 - Veterans Day Holiday
- 25-29 - Thanksgiving Holiday

December

- 2 - Students Return
- 20 - Last day/Early Release of 2nd nine weeks
- 23-31 - Students/Staff Holidays

January

- 1-6 - Student Holiday
- 6 - Student Holiday/Staff Professional Learning
- 7 - First day back for students
- 20 - Dr. Martin Luther King Day Holiday

February

- 17 - President's Day Holiday

March

- 7 - Last day of 3rd nine weeks
- 10-14 - Spring Break
- 17 - Students Return

April

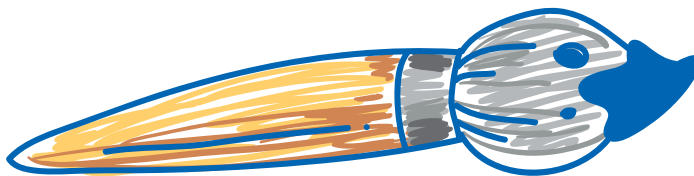
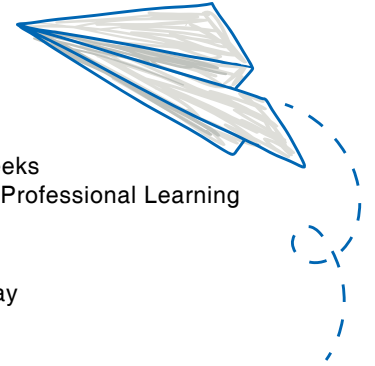
- 18 - Holiday/Good Friday
- 21 Holiday

May

- 26 - Memorial Day Holiday
- 29 - Early Release/Last day of 4th nine weeks
- 30 - Staff Planning Day


June

- 2 - Staff Planning Day





# SEPTEMBER 2024

| SUNDAY | MONDAY                 | TUESDAY   | WEDNESDAY                        | THURSDAY  | FRIDAY | SATURDAY |
|--------|------------------------|---|----------------------------------|---|--------|----------|
| 1      | 2<br>LABOR DAY         | 3   | 4                                | 5   | 6      | 7        |
| 8      | 9                      | 10  | 11<br>1ST 9 WEEKS MID-TERM       | 12  | 13     | 14       |
| 15     | 16<br>TCHS OPEN HOUSE  | 17<br>TCPS FAMILY ENGAGEMENT<br>TCPS PRE-K - 2 OPEN HOUSE 4:30-6:00   | 18                               | 19<br>TCES OPEN HOUSE 4:30-6:00<br>TCES FAMILY ENGAGEMENT<br>TCHS PICTURE MAKE UP DAY FOR SENIORS | 20     | 21       |
| 22     | 23<br>TCMS OPEN HOUSE  | 24<br>TCES PICTURE DAY  | 25<br>TCPS PICTURE DAY PRE-K - 2 | 26<br>STEINHATCHEE INDIVIDUAL PICTURES  | 27     | 28       |
| 29     | 30<br>TCMS PICTURE DAY | <p>September Is...<br/> <b>National Literacy Month &amp; School Attendance Month</b></p>  |                                  |   |        |          |

# EDUCATIONAL CHOICES

## Educational Choice Rights

Caregivers and students have access to the following educational choice options as outlined in Florida Statute:

1. May seek public educational choice options throughout the state and may qualify for private school choice under the FL Personal Learning Scholarship Accounts Program (FS 1002.31).
2. May request teacher change for student utilizing the approved district process (FS 1003.3101).
3. May request an in-field teacher (FS 1012.42).



# HOME EDUCATION

The Taylor County School District allows students to attend a home education program. Details of the program for students between the ages of 5-16 are available upon request from the Student Support Services at 850-838-2500. A student seeking to enter or re-enter Taylor County District Schools from a home education program must meet all entrance requirements that any other student must meet and shall be placed accordingly. Credit for students in grades 9 and above are awarded based upon the school board adopted plan. Home school students are eligible to take CTE courses at TCMS, TCHS and dual enroll at BBTC.



# FLORIDA VIRTUAL PROGRAM

Currently, the Taylor County School District provides two options for Taylor County Public School students to utilize virtual school programs, both of which are approved by the State of Florida. Available virtual school programs are: Florida Virtual School and Edmentum. There is a brief summary of each option listed below:


1. Florida Virtual School and PAEC Virtual School: The Florida Virtual School (FLVS) is an Internet-based school currently serving all 67 county districts throughout Florida and can provide virtual school services to students in grades K-12, as well as adults seeking GED® alternatives. FLVS curricula for grades K-12 are based on the Florida State Standards. FLVS can make instruction available at any time and in any place to Florida students. FLVS has very detailed step-by-step directions on registration, and students are encouraged to check with their guidance counselor to help them with the registration process.
2. Course Ware is an approved virtual program offered to TCHS students that may need to recover credit or require an alternative path to earn original credit. This program is designed for a select population and students must meet a specific criteria before being enrolled.

## Note:

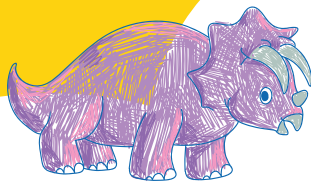
- All students enrolling in a virtual school must do so in conjunction with the Taylor County School District.
- Students who are dual enrolled in classes through FLVS in lieu of Taylor County High School courses must schedule the FLVS classes either at the beginning of the school day or at the end of the school day.
- On campus Internet access to students will be available on an as needed basis.



# OCTOBER 2024

| SUNDAY  | MONDAY   | TUESDAY  | WEDNESDAY                                    | THURSDAY  | FRIDAY  | SATURDAY |
|---|--|--|--|---|---|----------|
| October Is...<br>National Disabilities Awareness<br>Month & National Bullying<br>Prevention Month |  | 1<br><br>TCHS PICTURE DAY<br>FOR UNDERCLASSMEN                     | 2  | 3   | 4   | 5        |
| 6   | 7  | 8<br><br>TCHS PSAT/NMQST FOR<br>10TH AND 11TH                      | 9<br><br>TCHS FALL NCR SAT FOR<br>SENIORS    | 10<br><br>TCHS PSAT 9 FOR 9TH   | 11<br><br>END OF 1ST NINE WEEKS   | 12       |
| 13  | 14<br><br>STAFF DEVELOPMENT<br>DAY                                     | 15   | 16   | 17  | 18  | 19       |
| 20  | 21   | 22<br><br>TCHS FAMILY<br>ENGAGEMENT                                | 23<br><br>1ST 9 WEEKS REPORT<br>CARDS ISSUED | 24<br><br>STEINHATCHEE<br>INDIVIDUAL PICTURES -<br>RETAKES<br><br>STEINHATCHEE<br>ELEMENTARY FAMILY<br>ENGAGEMENT | 25  | 26       |
| 27  | 28<br><br>TCES MAKE-UP PICTURE<br>DAY<br><br>TCMS FAMILY<br>ENGAGEMENT | 29<br><br>TCES FAMILY<br>ENGAGEMENT<br><br>HOMECOMING PEP<br>RALLY | 30   | 31<br><br>HALLOWEEN   |  |          |



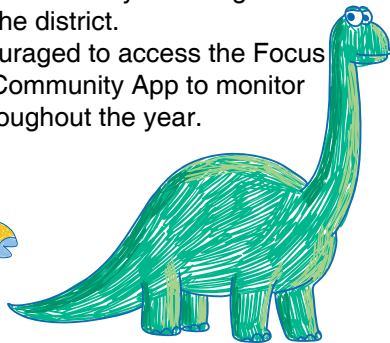
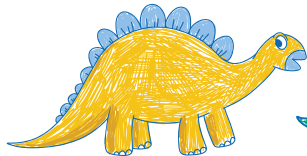


## STUDENT PROGRESSION TO EACH GRADE

Students progress from grade to grade is based upon rules adopted by the School Board in a document called the Student Progression Plan. This document is available for each school and on the district website for your review. We have listed a basic overview for you.

## REPORTING TO CAREGIVERS

- Report cards are issued each 9 weeks to provide an evaluation of a student’s academic progress and social and physical development. Even though the numerical grade of “60” is considered passing under Florida’s grading system, the numerical grade of “80” most accurately reflects on-grade-level academic performance and is more indicative that a student may likely achieve a passing score (Level 3 or higher) on All State Assessments for Math, Science, and English Language Arts. Caregivers of students with disabilities must be notified of progress toward IEP goals and objectives as often as their nondisabled peers are notified of progress.
- Caregivers are informed students in grades K-10 are administered the State’s standardized progress monitoring assessments and must successfully master course curricular standards, including English Language Arts, Math, and Science. The Taylor County School District will notify caregivers of student performance on State Assessments immediately following the receipt of scores to the district.
- Caregivers are encouraged to access the Focus Caregiver Portal or Community App to monitor student progress throughout the year.



## Primary K-2

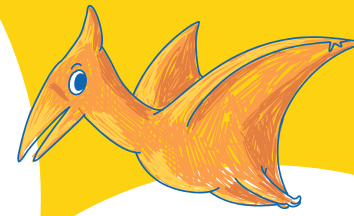
To pass a course in grades K-2, students must earn a grade of 60 or higher and show mastery of the benchmarks through proficiency demonstrated on STAR Reading and Math progress monitoring. A variety of classes where students exhibit their strengths through, music, media, and physical education, which are beneficial to the development of the whole child, are provided for all students in addition to core curriculum.

## Elementary 3-5

Florida law states third graders who score at Level 1 in Reading on the statewide Florida Assessment on Student Thinking-English Language Arts (FAST-ELA) must be retained (not promoted to fourth grade). However, students who demonstrate the required Reading level through a state-approved alternative standardized reading test can be granted a good cause exemption and be promoted to fourth grade. 3rd graders scoring a Level 1 on the FAST- ELA and unable to demonstrate the required reading level on the alternative standardized reading test will be given an opportunity to attend our Summer Reading Camp. 4th and 5th grade students may be retained based on teacher/administrator input, overall grades, and scores on the Florida Assessment of Student Thinking for Reading and Math.

## Middle 6-8

To pass a course in grades 6-8, students must earn a grade of 60 or higher and show mastery of the standards for the course. The student must pass the four core academics (language arts, math, science and social studies) or may be retained. Students scoring below grade level on FAST English Language Arts and/or Math may be required to receive remediation. Students who meet eligibility criteria will be given the opportunity to take Algebra I Honors and/or Business Education for High School Credit.



## High 9-12

### 24-Credit Standard Diploma Requirements

Available To All Students, Including Students With Disabilities

|   |
|---|
| <b>4 Credits ELA</b>  |
| <ul style="list-style-type: none"> <li>• ELA 1, 2, 3, 4</li> <li>• ELA honors, Advanced Placement (AP), AICE, IB and dual enrollment may satisfy this requirement</li> </ul>  |
| <b>4 Credits Mathematics*</b>   |
| <ul style="list-style-type: none"> <li>• One of which must be Algebra 1 and one of which must be Geometry</li> <li>• Industry Certifications that lead to college credit may substitute for up to two mathematics credits (except for Algebra 1 and Geometry) **</li> <li>• An identified computer science*** credit may substitute for up to one mathematics credit (except for Algebra 1 and Geometry)</li> </ul>   |
| <b>3 Credits Science*</b>   |
| <ul style="list-style-type: none"> <li>• One of which must be Biology, two of which must be equally rigorous science courses</li> <li>• Two of the three required course credits must have a laboratory component</li> <li>• Industry Certifications that lead to college credit may substitute for up to one science credit (except for Biology)**</li> <li>• An identified computer science*** credit may substitute for up to one science credit (except for Biology)</li> </ul> |
| <b>3 Credits Social Studies</b>   |
| <ul style="list-style-type: none"> <li>• 1 credit in World History</li> <li>• 1 credit in U.S. History</li> <li>• 0.5 credit in U.S. Government</li> <li>• 0.5 credit in Economics</li> </ul>   |
| <b>0.5 Credit in Personal Financial Literacy****</b>  |
| <b>1 Credit Fine and Performing Arts, Speech and Debate, Career and Technical Education, or Practical Arts*</b>   |
| <b>1 Credit Physical Education*</b>   |
| <ul style="list-style-type: none"> <li>• To include the integration of health</li> </ul>  |
| <b>7.5 Elective Credits</b>   |
| Students must earn a 2.0 unweighted grade-point average (GPA) on a 4.0 scale for all cohort years and pass statewide, standardized assessments.   |

# NOVEMBER 2024

| SUNDAY                       | MONDAY                          | TUESDAY  | WEDNESDAY                 | THURSDAY  | FRIDAY                                    | SATURDAY |
|------------------------------|---------------------------------|--|---------------------------|---|---|----------|
|                              |                                 |  |                           |   | 1<br>HOMECOMING PARADE<br>HOMECOMING GAME | 2        |
| 3                            | 4                               | 5<br>TCPS FAMILY ENGAGEMENT  | 6                         | 7<br>BBTC DINNER UNDER THE PINES SCHOLARSHIP DINNER & AUCTION<br>TCPS MAKE-UP PICTURE DAY PRE-K - 2 | 8   | 9        |
| 10                           | 11<br>VETERANS DAY<br>NO SCHOOL | 12<br>TCHS PICTURE MAKE UP DAY FOR UNDERCLASSMEN<br>TCMS PICTURE MAKE UP DAY<br>TCHS FAMILY ENGAGEMENT | 13<br>2ND 9 WEEKS MIDTERM | 14  | 15  | 16       |
| 17                           | 18                              | 19   | 20                        | 21  | 22  | 23       |
| 24                           | 25<br>                          | 26   | 27                        | 28  | 29<br>                                    | 30       |
| <b>THANKSGIVING HOLIDAYS</b> |                                 |  |                           |   |   |          |



## Taylor County School District is Committed to Providing a Multi-Tiered System of Supports Ensuring Strong Start and Promoting a Bright Future!

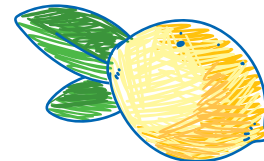
“Any person who has a physical or mental impairment which substantially limits one or more major life activities; has a record of such an impairment; or is regarded as having such an impairment.”

A determination is made if the student needs related aids, services, or accommodations for instruction and assessment, including the statewide assessments. A Section 504 plan may be developed to access accommodations. Even students with a temporary disability, such as a broken arm, may require accommodations for a limited period of time that is specified on the student’s plan. The student must use the specific accommodation regularly in the instructional setting. For example, the student with an injury that results in the inability to write will need an accommodation for writing in classroom activities as well as the statewide assessments (FDOE, 2015, January 15.)

Procedures for determining Section 504 eligibility are given in the “District Guide for Meeting the Needs of Students: Section 504 of the Rehabilitation Act of 1973” (Bureau of Exceptional Education and Student Services, 2011) Questions concerning these requirements should be directed to the district 504 coordinator at 838-2536. Additional assistance related to Section 504 eligibility may be obtained by contacting the Student Support Services Project at 850-245-7851 or the Office of Equal Education Opportunity at 850-245-0509.

### Establishing A Multi-Tiered System Of Support Includes:

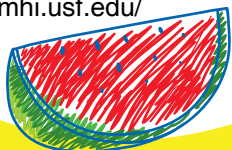
1. High quality, research-based instructional and behavioral supports in general education.
2. School-wide screening to determine which students need closer monitoring or additional interventions
3. Multiple tiers of increasingly intense, research- based interventions matched to the needs of the student(s)
4. Use of collaborative problem solving to develop, implement, and monitor interventions
5. Continuous monitoring of student progress to determine if instruction/interventions are effective in meeting the needs of the student(s)
6. Follow-up to ensure that the instruction/interventions were implemented as planned
7. Active caregiver involvement throughout the process of pursuing solutions that lead to success
8. Evaluation time line requirements are followed unless both the caregivers and the school team agree to a time extension to learn more about what works for the student
9. Adapted from the National Joint Committee on Learning Disabilities.



### HOW DOES POSITIVE BEHAVIOR SUPPORT (PBS) FIT INTO THE MULTI-TIERED SYSTEM OF STUDENT SUPPORT (MTSS) AND THE RESPONSE TO INTERVENTION (RTI) PROCESS?

It is an integral part of the process when students are having behavioral difficulties. Behavioral supports and services are incorporated into all three Tiers of the RtI process, with the level and intensity of behavioral interventions increasing in response to student need.

For more information on RtI or PBS, please visit these websites:  
<http://www.florida-rti.org/> <http://flpbs.fmhi.usf.edu/>








### What Is a Multi-Tiered System of Supports (MTSS)?

Caregivers long to see their child excel and can become very frustrated if the child falls behind in reading, math, writing, or other subjects or if he or she has difficulty getting along with others or making appropriate choices. Finding out what works best for your child is the key to helping him or her to have a successful school experience. When a student needs more help, a team of people use a problem-solving process to find ways to improve learning and find solutions. Caregivers are also part of this team and are encouraged to work with the school to find solutions.

During the problem-solving process, assessments are used to help the team find out what works best. The most important goal of any type of assessment is to help the school understand how to better help each child. Teams focus on achieving a shared goal: finding out what instruction your child responds positively to and then taking responsibility for providing that level of instruction for as long as your child needs it. This approach is referred to as a Multi-Tiered System of Supports (MTSS).



# DECEMBER 2024

| SUNDAY                    | MONDAY   | TUESDAY | WEDNESDAY  | THURSDAY | FRIDAY   | SATURDAY |
|---------------------------|--|---------|--|----------|--|----------|
| 1                         | 2  | 3       | 4  | 5        | 6<br>BBTC CHILI COOK OFF   | 7        |
| 8                         | 9  | 10      | 11   | 12       | 13   | 14       |
| 15                        | 16   | 17      | 18   | 19       | 20<br>BBTC FALL TERM ENDS<br>EARLY RELEASE<br>END OF 2ND NINE<br>WEEKS   | 21       |
| 22                        | 23<br><br> | 24      | 25   | 26       | 27<br><br> | 28       |
| <b>CHRISTMAS HOLIDAYS</b> |  |         |  |          |  |          |
| 29                        | 30<br><b>CHRISTMAS HOLIDAYS</b>  | 31      |  <p style="text-align: center;"><b>HAPPY HOLIDAYS</b><br/>FROM THE TAYLOR COUNTY SCHOOL DISTRICT</p> |          |  |          |
|                           |  |         |  |          |  |          |

## Participation Of Students With Disabilities In Statewide Assessment

The FDOE is accountable for the achievement of all students and schools, districts, and federal government. School grades and school improvement ratings include the scores and learning gains of all students assessed on the statewide assessments, including students with disabilities and students who are ELLs (FDOE, 2014, July-a; 2014, July-b). Federal legislation, including the Elementary and Secondary Education Act and the Individuals with Disabilities Education Act (IDEA), and Florida statutes require that students with disabilities participate in the statewide testing program and be afforded appropriate accommodations in instruction and assessment. All determinations regarding participation in the statewide assessment program and need for classroom & testing accommodations must be documented in the student's IEP or Section 504 plan. Students with disabilities working on general education standards who have an IEP or a Section 504 plan are assessed on the FAST and EOCs. This includes students who are enrolled in public schools through the McKay Scholarship Program and students who are placed in residential settings by a school district. Students with disabilities who attend a private school through a McKay Scholarship may be given the statewide assessment at their caregivers' request. Any student with a disability is expected to participate in the statewide assessment program with or without accommodations unless the student meets criteria for participation in the FSAA. The IEP team makes the decision to have a student with significant cognitive disability take the FSAA based on the guidelines in Rule GA- 1.0943(4), Florida Administrative Code (F.A.C.). A student with a disability may also request a waiver of the use of assessment results for the purpose of receiving a course grade or a standard diploma (ss.1008.22(3)(c)2 and 3 and 1003.4282(11)(e), F.S.).

## Equality Statement

The School Board of Taylor County, Florida does not discriminate in admission or access to, or treatment or employment in, its programs and activities on the basis of race, color, religion, age, sex, national origin, marital status, disability, genetic information, sexual orientation, gender identity or expression, or any other reason prohibited by law, regarding nondiscrimination. See 34 C.F.R.100.6(d); 34 C.F.R. 106.9; 34 C.F.R. 110.25. In addition, the School Board provides equal access to the Boy Scouts of America and other designated youth groups. This holds true for all students who are interested in participating in educational programs and/or extracurricular school activities. See 34 C.F.R.108.9. Disabled individuals needing reasonable accommodations to participate in and enjoy the benefits of services, programs, and activities of the School Board are required in advance to notify the administrator at the school/center at which the event or service is offered to request reasonable accommodations. The lack of English language skills will not be a barrier to any opportunity or event associated with Taylor County Schools. Questions, complaints, or requests for additional information regarding discrimination or harassment may be sent to: Kiki Puhl- Director of Personnel and Title IX Coordinator, 318 N. Clark St. Perry, FL. 32347: 850-838-2500/ kiki.puhl@taylor.k12.fl.us or Sabrina Bethea, Supervisor of ESE and Student Services and Section 504 Coordinator, 318 N. Clark St. Perry, FL. 32347: 850-838-2500/sabrina.bethea@taylor.k12.fl.us

## Students Classified As Disabled By Section 504

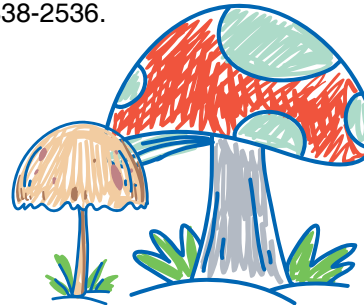
All qualified students with disabilities in Florida's public education system must be provided necessary related aids, services, or accommodations in classroom instruction, assessment, and the administration of statewide assessments. Districts must ensure that students with disabilities defined by Section 504 of the Rehabilitation Act of 1973 are considered for and provided with the same accommodations as students with disabilities who have an IEP. Students with disabilities who are not classified as exceptional students with an IEP under the IDEA may qualify as a person with a disability as defined in Rule 6A- 19.001(6), F.A.C.:

## Exceptional Student Education

Students with disabilities may be eligible for especially designed instruction and related services. Due to recent changes, the first steps of the evaluation may involve developing interventions and monitoring the student's progress toward grade level benchmarks at regular intervals as opposed to administering psychological and academic evaluations only. If eligible for exceptional student education (ESE), an individual educational plan or IEP is developed. This plan is developed by a team and describes the services the student is to receive. Caregivers must give permission for evaluation and for placement into ESE programs. For additional information, please refer to this website:


<http://www.florida-ti.org/EvaluationsSpecialEd.pdf>

For questions, accommodations, or concerns regarding services in your child's school, contact your child's principal. For district policies, practices and Exceptional Student Parent Services, please contact the District ESE Office at 850-838-2536.



# JANUARY 2025



| SUNDAY                    | MONDAY  | TUESDAY  | WEDNESDAY   | THURSDAY  | FRIDAY                                      | SATURDAY                  |
|---------------------------|---|--|---|---|---|---------------------------|
|                           |   |  | 1<br><br>NEW YEAR'S DAY | 2   | 3   | 4                         |
| <b>CHRISTMAS HOLIDAYS</b> |   |  |   |   |   |                           |
| 5                         | 6<br>TEACHERS RETURN/<br>STAFF DEVELOPMENT<br>DAY | 7<br>BBTC SPRING TERM<br>BEGINS<br>STUDENTS RETURN | 8   | 9   | 10  | 11                        |
| 12                        | 13  | 14   | 15<br>2ND 9 WEEKS REPORT<br>CARDS ISSUED  | 16<br>STEINHATCHEE<br>ELEMENTARY FAMILY<br>ENGAGEMENT | 17  | 18                        |
| 19                        | 20<br>MARTIN LUTHER KING<br>JR. DAY               | 21<br>TCES FAMILY<br>ENGAGEMENT                    | 22  | 23<br>TCHS SENIORS CAP AND<br>GOWN PICTURES           | 24<br>TCHS SENIORS CAP AND<br>GOWN PICTURES | 25                        |
| 26                        | 27  | 28<br>TCHS FAMILY<br>ENGAGEMENT                    | 29  | 30  | 31  | Happy<br>New year<br>2025 |



## OPPORTUNITIES FOR COLLEGE AND CAREER BOUND STUDENTS

The Taylor County School District recognizes the importance of preparing students for the transition from high school to college and career educational demands. As a result, Taylor County High School provides a variety of accelerated courses, articulated pathways to industry certifications, and preparation for the ACT and SAT. Students wishing to take any of the academic opportunities are required to meet eligibility criteria; therefore, students are encouraged to discuss their educational options with their guidance counselors.

**Taylor County High School and BBTC offer additional programs to assist students with achieving their educational goals:**

### CAREER TECHNICAL EDUCATION CERTIFICATE OPPORTUNITIES:

Big Bend Technical College is a postsecondary technical college that operates under the Taylor County School Board. CTE opportunities are offered to dual enrolled high school students that meet both district and state requirements. Programs offered at BBTC include Medical Coder/Biller, Millwright 1&2, Patient Care Technician, Welding Technology, Welding Technology Advanced programs, Public Safety Telecommunication, and Electrical & Instrumentation Technology 1 & 2.

### SCIENCE, TECHNOLOGY, ENGINEERING AND MATHEMATICS (STEM) CAREER COURSES:

STEM education programs like those offered at TCHS and BBTC engage students in activities, projects, and problem-based (APPB) learning, which provide hands-on classroom experiences. Students create, design, build, discover, collaborate, and solve problems while applying what they learn in math and science. They're also exposed to STEM fields through professionals from local industries who supplement the real-world aspect of the curriculum through mentorships and workplace experiences.

### BRIGHT FUTURES

What is the Florida Bright Futures Scholarship Program? In 1997, the Florida Legislature created the Florida Bright Futures Scholarship Program. This Florida Lottery-Funded scholarship rewards students for their academic and CTE achievements during high school by providing funding for them to pursue postsecondary educational and career goals in Florida. Contact your child's school counselor for eligibility information.

### INTRODUCTION TO LEADERSHIP:

This course, known as JROTC, enables students to develop knowledge of the history, customs, traditions, and purpose of the Army JROTC. The course includes development of basic leadership skills, appreciation for diversity, active learning skills in writing and oral communication, financial planning, physical fitness, healthy lifestyles, and basic first aid. An overview of the globe and geography and basic map reading skills are incorporated. A study of the United States Constitution, Bill of Rights, responsibilities of United States citizens, and the federal justice system is also provided. Taylor County High School's award-winning JROTC has established itself as one of the elite high school JROTC programs in the State.

### DIVERSIFIED COOPERATIVE TRAINING (DCT):

Students work while attending Taylor County High School and are provided occupational skills through employment-related instruction and concurrent, paid, on-the-job training, supervised by the employer and teacher/coordinator. The student may earn up to three (3) credits to include On-The-Job Training.

### ACADEMIC OPPORTUNITIES

- PSAT 9-11
- Honors Academic Track
- Dual Enrollment Courses through North Florida College
- Early Admissions at North Florida College and Big Bend Technical College

### DIDN'T EARN YOUR HIGH SCHOOL DIPLOMA?

GED® Preparation Classes are offered all year long at BBTC. Earn your GED® and successfully transition to a postsecondary Career and Technical Education (CTE) program at Big Bend Technical College. \*Financial Aid and scholarships available to those that qualify.




### ON THE JOB TRAINING (OJT):

This program provides students with selected occupational competencies through employment-related instruction and concurrent, paid, supervised on-the-job training. Supervised on-the-job training provides opportunities for selective placement based on the student's occupation and competency development and evaluation through planned instructional activities in a job setting. Students wishing to participate in DCT or OJT must apply with the DCT Coordinator and be approved prior to registration. This course offers one to three credit hours of on-the-job training, depending upon the coordinator's recommendation and the student's schedule.

### POSTSECONDARY CAREER TRAINING FOR ADULTS:

Big Bend Technical College offers a multitude of CTE Programs to serve the needs of all Taylor County residents wishing to upgrade their work skills and employability options. If you are interested in changing careers or learning new job skills, BBTC offers training in Aluminum Welding and Fabrication, Electrical and Instrumentation 1&2, Massage Therapy, Medical Coder/Biller, Millwright 1&2, Patient Care Technician, Practical Nursing, Professional Nursing LPN to RN, Public Safety Telecommunication, Welding Technology, and Welding Technology Advanced.

# FEBRUARY 2025

| SUNDAY   | MONDAY                           | TUESDAY | WEDNESDAY                      | THURSDAY                             | FRIDAY   | SATURDAY  |
|--|----------------------------------|---------|--------------------------------|--------------------------------------|--|---|
| <b>FEBRUARY IS...<br/>Career and<br/>Technical Education Month</b> |                                  |         |                                |                                      |  | 1   |
| 2  | 3                                | 4       | 5<br>3RD NINE WEEKS<br>MIDTERM | 6                                    | 7  | 8   |
| 9  | 10                               | 11      | 12                             | 13                                   | 14<br>TCPS SPRING CLASS<br>PICTURE DAY PRE-K-2 | 15  |
| 16   | 17<br>PRESIDENTS' DAY<br>HOLIDAY | 18      | 19                             | 20                                   | 21   | 22  |
| 23   | 24<br>TCMS FAMILY<br>ENGAGEMENT  | 25      | 26                             | 27<br>STEINHATCHEE GROUP<br>PICTURES | 28   |  |

## SERVICES AND OPPORTUNITIES AVAILABLE TO CAREGIVERS

Adult Basic Education & General Education Diploma (GED)® at Big Bend Technical College located in Perry (850) 838-2545.

Title I Parent Liaison Serves caregivers of children in Taylor County Title 1 Schools.

School Advisory Council a resource in each school and to the principal to provide direction and offer solutions to educational issues. Members are elected by their peers and include a strong representation of caregivers and community members.

Exceptional Student Parent Liaison serves caregivers of students with disabilities by offering resources, referral information, and training. The Parent Liaison also coordinates the ESE Parent Advisory Committee: (850) 838-2536.

Volunteer Program Parents and community members are invited and encouraged to become volunteers in the school system. Call the school of your choice for further information.

Child Find Information and free screenings are provided for children (birth to five years) who may have difficulty learning, playing, speaking, seeing, walking and hearing. For more information on Child Find and screening for developmental delays, contact Betsy Stephens at: (850) 838-2536.

### WHAT CAN I DO?

- Let your child know that you expect him/her to attend school every day. Explain that, just as you have a job, it's your child's job to go to school and learn.
- Set a time for doing homework each evening and a time to go to bed. Unfinished homework and too little sleep are common reasons why caregivers hear the words, "I don't feel good," on school mornings.
- If you see that your child is having academic difficulties, contact the school and check to see if your student qualifies for mentoring and/or tutoring opportunities provided through federal funding (Titles I, II, and V).

### VOLUNTEER OPPORTUNITIES FOR CAREGIVERS

- Caregivers who know what's happening at school can be a powerful force in their children's education. One of the simplest ways of becoming involved is to volunteer. The staff and administration of your child's school will welcome your efforts. Other ways to become involved in school activities are:
- Join the Parent Teacher Organization (PTO)
- Serve on the School Advisory Council (SAC)
- Become a mentor
- Volunteer as a chaperon for field trips
- Attend parent teacher conferences
- Volunteer time enables caregivers to get to know their children's teachers and administration and provides the perfect opportunity for caregivers to become more involved in their children's education.

## CAREGIVERS MAKE A DIFFERENCE

School performance improves significantly when caregivers are actively involved in their children's education. YOU can make a big difference just by being part of your child's everyday school experience.



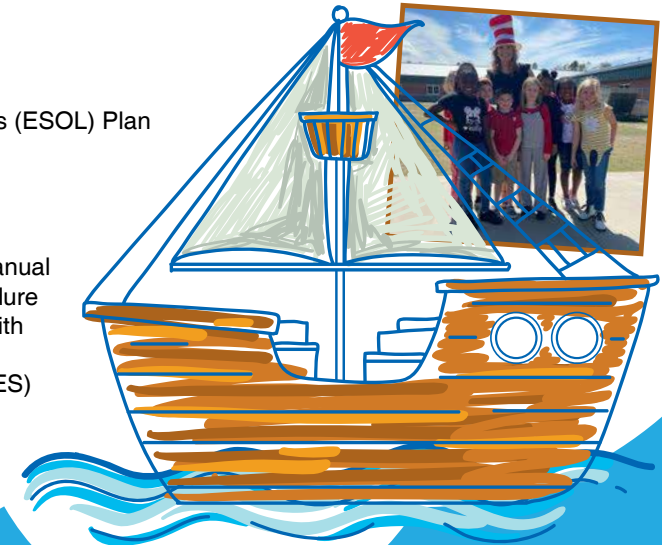
## RESOURCES FOR FAMILIES

- Florida Department of Education: [www.fldoe.org](http://www.fldoe.org)
- Office of Family Involvement: [www.fldoe.org/family](http://www.fldoe.org/family)
- Office of School Improvement: [www.osi.fsu.edu](http://www.osi.fsu.edu)
- Office Parent Choice Information: [www.floridaschoolchoice.org](http://www.floridaschoolchoice.org)
- Toll Free Number: 1-800-447-1636
- The Partnership for Family Involvement in Education National: [www.thefamilyworks.org](http://www.thefamilyworks.org)
- Florida: [www.fndfl.org/partnership](http://www.fndfl.org/partnership)
- National Parent Information Network: [www.npin.org](http://www.npin.org)
- Florida PTA: [www.floridapta.org](http://www.floridapta.org)
- Parents Place: [www.parentsplace.com](http://www.parentsplace.com)
- Family Education Network: [www.familyeducation.com](http://www.familyeducation.com)
- ParentSmart: [www.parentsmart.com](http://www.parentsmart.com)
- Helping Your Child Learn To Read: 1-800-USA-LEARN
- Taylor County School District: [www.taylor.k12.fl.us](http://www.taylor.k12.fl.us)





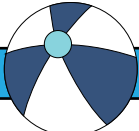

## OTHER INFORMATIONAL RESOURCES

- Available at each school or at the District Web Site [www.taylor.k12.fl.us](http://www.taylor.k12.fl.us)
- School Public Accountability Report (SPAR)
- School Improvement Plans
- Student Code of Conduct
- District Strategic Plan
- School Advisory Council Handbook
- English Speakers of Other Languages (ESOL) Plan
- School Technology Plan
- Title I Plan
- District Safety Plan
- Safe and Drug Free Plan
- Instructional Materials Procedures Manual
- Equity Statement – Grievance Procedure
- Information for Parents of Students with Disabilities
- Supplemental Education Services (SES)
- Free After School Tutoring

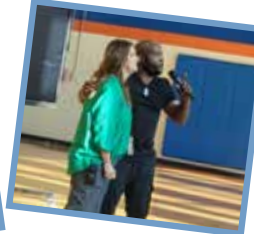
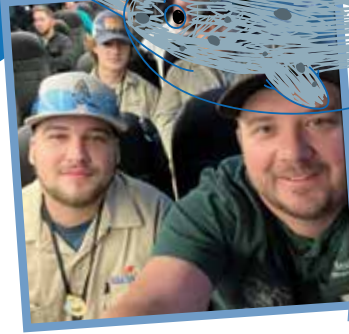
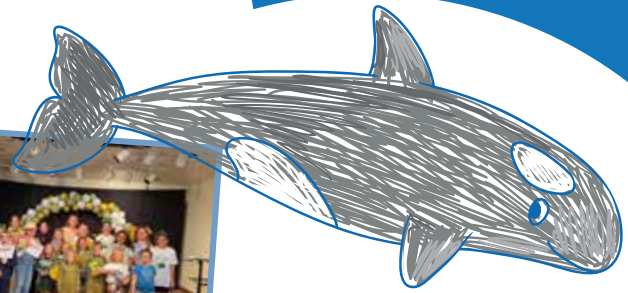




# MARCH 2025

| SUNDAY              | MONDAY   | TUESDAY   | WEDNESDAY                       | THURSDAY                                  | FRIDAY  | SATURDAY  |
|---------------------|--|---|---------------------------------|---|---|---|
|                     |  |   |                                 |   |   | 1   |
| 2                   | 3  | 4<br>TCES CLASS PICTURE DAY<br>TCMS FAMILY ENGAGEMENT<br>TCPS FAMILY ENGAGEMENT<br>TCHS FAMILY ENGAGEMENT | 5<br>TCHS SAT DAY (JUNIORS)     | 6   | 7<br>END OF 3RD NINE WEEKS  | 8   |
| 9                   | 10<br>  | 11  | 12                              | 13  | 14<br> | 15<br> |
| <b>SPRING BREAK</b> |  |   |                                 |   |   |   |
|                     | 16<br> |   |                                 |   |   |   |
| 16                  | 17<br>STUDENTS RETURN  | 18  | 19                              | 20  | 21  | 22  |
| 23                  | 24   | 25  | 26                              | 27  | 28  | 29  |
| 30                  | 31   |   | 3RD 9 WEEKS REPORT CARDS ISSUED | STEINHATCHEE ELEMENTARY FAMILY ENGAGEMENT |   |   |

# WORDS YOU NEED TO KNOW!



- **Community Eligibility Option (CEO):** All Taylor County Students are eligible for free breakfast and lunch.
- **Deficiency:** The student is unable to master academic requirements.
- **English Language Learners (ELL):** A program for students who do not speak or write English well. Each school in the district has an ELL program to help children learn English.
- **Every Student Succeeds (ESSA):** ESSA provides criteria for achievement.
- **Exceptional Student Education Program (ESE):** The purpose of Exceptional Student Education (ESE) is to help each child with an identified exceptionality under IDEA (Individuals with Disabilities Education Act) to progress in public school and prepare for life after school. ESE Services include specially designed instruction and related services to meet the unique needs of the exceptional student. There is no charge for these special services. For more information regarding determining child find, evaluation, and determining eligibility, please contact your school site principal or the Office of Exceptional Student Education at 850-838-2536.
- **Florida Assessment of Student Thinking (FAST):** Standards best assessment that will be administered as three shorter progress monitoring tests in the Fall, Winter, and Spring. These tests will provide real-time data that will inform students, teachers, and caregivers about individual student growth. Students in grades Pre-K through Grade 10 will take the FAST test.
- **Florida BEST Standards:** In Florida, these standards are what your child is expected to know at each grade level. Teachers are expected to cover this material. All report card grades are based on these standards. These standards are developed by the state and measured by a test given to every public-school student in grades 3 through 10. Go to [www.fldoe.org](http://www.fldoe.org) and click on Florida State Standards to read more about these standards.
- **Extracurricular Activities:** These are school-sanctioned activities like clubs or athletic teams that happen either before or after school.
- **Immediate Intensive Intervention (III):** Florida Department of Education instructional strategy that provides immediate intensive support to those students reading below grade level in an effort to improve reading proficiency before students fall too far behind.
- **Individual Education Plan (IEP):** An annually reviewed collective agreement between caregivers, school, and, in appropriate incidents, the students and/or other involved parties, that outlines educational and related services designed to benefit the student. These services are reasonably planned to ensure the student achieves academic expectations, functional performance levels, and is adequately prepared for post-secondary goals, including college and career readiness.
- **Positive Behavior Support (PBS):** Based on understanding why problem behaviors are occurring or the behavior's function, PBS is the application of evidence-based strategies and systems to assist schools in increasing academic performance, increasing safety, decreasing problem behavior, and establishing positive school cultures.
- **Proficiency:** The student has the skills, knowledge, and motivation to successfully master academic requirements and is performing at or above grade level.
- **Retention:** This refers to students who do not move on to the next grade level at the end of the school year due to poor academic performance. For example, a 4th grader who is unable to do 4th grade work at the end of the year is retained or kept in the 4th grade for another year.
- **Section 504 of the Rehabilitation Act of 1973:** Section 504 of the Rehabilitation Act states, in part, "No otherwise qualified individual with a disability in the United States as defined in this section shall, solely, by the reason of the disability, be excluded from the participation in, be denied the benefits of, or be subjected to discrimination under any program or activity." The underlying purpose of this act is to ensure equal access and, in the educational setting, determine appropriate accommodations in the general education classroom. Students with disabilities who do not qualify for ESE/IEPs may qualify for support under Section 504. For more information or assistance, please contact your school site principal or the Office of Student Services at 850-838-2536.
- **Student Progression Plan:** This is a technical document that provides guidance to school personnel regarding federal, state, and local rules concerning attendance, course of study, report cards, promotion and retention, testing, grading, academic standards, transfers, credits, honors, diplomas, scholarships, accelerated learning, and related topics. It is reviewed annually by the School Board and a committee of teachers, caregivers, students, and administrators to revise as needed. The full text is available in hard copy at every school and online at: [www.taylor.k12.fl.us](http://www.taylor.k12.fl.us)
- **Teacher Qualifications:** The district always makes an effort to hire teachers who are certified in the subject(s) that they are assigned to teach. Caregivers are notified in writing when this does not occur. Caregivers have the right to request and receive information regarding the professional qualifications of their student's classroom teachers.
- **Multi-Tiered System of Supports (MTSS):** A Multi-Tiered System of Supports (MTSS) is a term used to describe an evidence-based model of schooling that uses data-based problem-solving to integrate academic and behavioral instruction and intervention. The integrated instruction and intervention is delivered to students in varying intensities (multiple tiers) based on student need. "Need-driven" decision-making seeks to ensure that district and school resources reach the appropriate students (schools) at the appropriate levels to accelerate the performance of ALL students to achieve and/or exceed proficiency. By basing instructional delivery in increasing intensity based on student data, school personnel are able to provide more meaningful identification of student needs, improve instructional quality, and provide all students with the best opportunity to succeed in school.

# APRIL 2025

| SUNDAY  | MONDAY                       | TUESDAY | WEDNESDAY                 | THURSDAY  | FRIDAY                    | SATURDAY        |
|---|------------------------------|---------|---------------------------|---|---------------------------|-----------------|
|  <p>April is...<br/><b>Autism Awareness Month</b></p> |                              | 1       | 2                         | 3   | 4                         | 5               |
| 6   | 7                            | 8       | 9<br>BBTC CAREER SHOW     | 10<br>BBTC OPEN HOUSE   | 11<br>TCHS GRAD BASH      | 12              |
| 13  | 14<br>TCMS FAMILY ENGAGEMENT | 15      | 16                        | 17  | 18<br>GOOD FRIDAY/HOLIDAY | 19              |
| 20<br>EASTER  | 21<br>HOLIDAY                | 22      | 23<br>4TH 9 WEEKS MIDTERM | 24  | 25                        | 26<br>TCHS PROM |
| 27  | 28                           | 29      | 30                        |  <p><i>Happy Easter</i><br/>From the Taylor County School District</p> |                           |                 |

# WHAT IS TITLE I?

Title I is part of the Every Student Succeeds Act of 2015. This program's purpose is to ensure all children have a fair, equal, and significant opportunity to obtain a high-quality education. The services provided assist children in closing achievement gaps. Additional federal funds are provided to Taylor County School District to provide supplemental services to eligible participating schools. These services range from additional instructional staff, supplemental reading and math books, additional staff development, and activities for caregivers to assist their children to be successful. Taylor County serves three schools with Title I funding.

## Title I Goals

- Align services with academic standards to measure progress
- Meet the needs of low-achieving students in high-poverty schools
- Close the achievement gap
- Hold schools, school districts, and states accountable for improving student learning.
- Give access to more resources and academic services in high poverty schools.
- Make informed decisions based on student achievement
- Provide research-based programs
- Improve teacher quality
- Improve caregiver engagement
- Coordinate Services

## PROGRESS

- Meet the needs of low-achieving students in high-poverty schools.
- Close the achievement gap.
- Hold schools, school districts, and states accountable for improving students learning.
- Give access to more resources and academic services in high-poverty schools.
- Make informed decisions based on student achievement.
- Provide research-based programs.
- Improve teacher quality.
- Coordinate services.

## MAJOR ACTIVITIES FUNDED BY TITLE I

- Additional Teachers
- After-School tutoring
- Administrative Support to Title 1 Schools
- Supplemental Curriculum
- Florida Standards Implementation
- Professional Development
- Curriculum Development
- Family Engagement
- Computer-Assisted Instructional Programs
- 2nd Grade Summer Reading Camp, if funds are available



## Title I School Eligibility

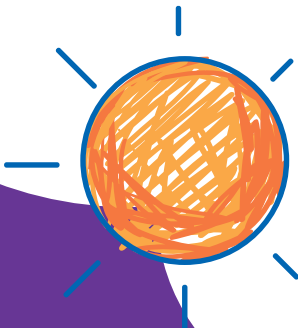
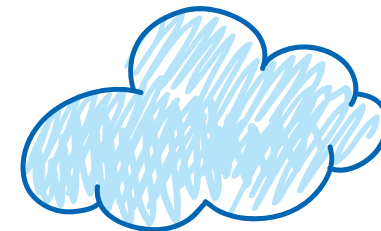
Title I eligibility is based on the number of children from low-income families. Schools with the highest percentage of children from low-income families receive funding.

## SUPPLEMENTAL SERVICES

This service is available to Level 1 and Level 2 students as measured by State Assessments. The Florida Department of Education approves providers for school districts to contract with for services. Instruction cannot take place during regular school hours. Caregivers of eligible students are notified by mail during the summer and the first week of school of the upcoming registration process. Transportation to or from the service is not provided.


## Components of Title 1 Family Engagement

- Taylor County District Title 1 Parent Advisory Council meets three times each school year. The council consists of district and school staff, caregivers, and community members.
- The council jointly develops a District Parent Involvement Policy along with an evaluation which is sent to all caregivers of students in Title 1 School each school year. The council is updated on Title 1 programs, status of Title 1 schools, and assessments.
- Each school has a Parent Involvement Council that meets quarterly to discuss the progress of school goals.





# MAY 2025

| SUNDAY  | MONDAY  | TUESDAY  | WEDNESDAY                             | THURSDAY   | FRIDAY   | SATURDAY |
|---|---|--|---------------------------------------|--|--|----------|
|  <p>CONGRATULATIONS ON...<br/><b>COMPLETING ANOTHER YEAR</b></p> |   |  |                                       | 1  | 2  | 3        |
| 4   | 5   | 6  | 7                                     | 8<br>BBTC AWARDS DAY   | 9  | 10       |
| 11  | 12  | 13<br>TCES FAMILY ENGAGEMENT   | 14                                    | 15   | 16<br>SENIOR PARADE TO SCHOOLS                     | 17       |
| 18  | 19<br>BBTC PRACTICAL NURSING PINNING CEREMONY | 20<br>TCHS SENIOR AWARDS NIGHT<br>TCPS FAMILY ENGAGEMENT   | 21                                    | 22<br>BBTC GRADUATION<br>STEINHATCHEE ELEMENTARY FAMILY ENGAGEMENT           | 23<br>BBTC SPRING TERM ENDS<br>TCHS GRADUATION 7PM | 24       |
| 25  | 26<br>MEMORIAL DAY                            | 27<br>TCES 5TH GRADE GRADUATION<br>STEINHATCHEE VPK GRADUATION<br>TCMS AWARDS NIGHT<br>TCPS VPK GRADUATION | 28<br>STEINHATCHEE END OF YEAR AWARDS | 29<br>END OF 4TH NINE WEEKS/EARLY RELEASE<br>4TH 9 WEEKS REPORT CARDS ISSUED | 30   | 31       |

## TAYLOR COUNTY CAREGIVER SELF-ASSESSMENT CHECKLIST

The Taylor County Caregiver Self-Assessment is designed to help caregivers determine how involved they are in promoting a positive education for their child. Please place a check by each response that you consider an area of need. This self-assessment is for your use and is not to be returned to your child's school.

## TAYLOR COUNTY CAREGIVER SELF-ASSESSMENT CHECKLIST

### FOCUS ON ATTITUDE

- I stress the importance of education and doing one's best in school to my child.
- I express my belief in my child's ability to be successful.
- I help my child set short- and long-term educational goals.
- I celebrate my child's academic accomplishments.

### FOCUS ON ACADEMICS

- I support reading with age-appropriate home activities.
- I ensure that our home has a consistent time and place to do homework.
- I ensure that my child has access to materials needed to complete assignments.
- I regularly discuss and ask to see work that my child is doing in school.
- I attend workshops on helping my children at home.

### FOCUS ON BEHAVIOR

- I monitor the television programs and videos viewed by my child.
- I monitor the internet, e-mail, chat sites, and computer games used by my child.
- I teach and reinforce positive behaviors such as respect for self and others, hard work, and responsibility.
- I am aware of and enforce school behavioral expectations.

### FOCUS ON BUILDING RESPONSIBILITY

- I ensure that my child has a regular routine.
- I encourage my child to accept responsibility for his/her actions.
- I ensure that my child is in attendance and on time to school each day.
- I monitor and promote my child's participation in extracurricular and after-school activities.

### FOCUS ON SCHOOL/HOME CONNECTIONS

- I communicate regularly with my child's teacher in person, on the phone, by email, or through writing.
- I prepare for and attend teacher conferences for Individualized Educational Plans, Academic Improvement Plans, or for other individualized student meetings. I attend open house, science fairs, plays, musical events, class trips, sporting events, curriculum nights, or other school activities at every opportunity.
- I volunteer in the school setting when possible.

**IF YOU WOULD LIKE ASSISTANCE, PLEASE CALL YOUR CHILD'S SCHOOL**




## HELPING YOUR CHILD SUCCEED

- Send your child to school every day.
- Read with your child every day.
- Show your values by your actions.
- Ask the teacher(s) for ideas on how you can support your child at home.
- Attend events, or volunteer
- Tell your child that you believe in their abilities.
- Establish a daily routine.
- Monitor your child's activities after school, in the evening, and on weekends.
- Show an interest in what is learned in school each day.
- If you need help with a school-related problem, contact your child's teacher(s), the school counselor, or the principal.
- Check report cards
- Utilize FOCUS & Parent Resource Center
- Set goals together
- Involve your child in a variety of activities
- Be sure that your student makes up work when absent
- Remind your child to listen and show kindness to others
- Make sure your student is mentally and physically ready for a school day
- Monitor TV & computer time
- Talk with your child



# JUNE 2025

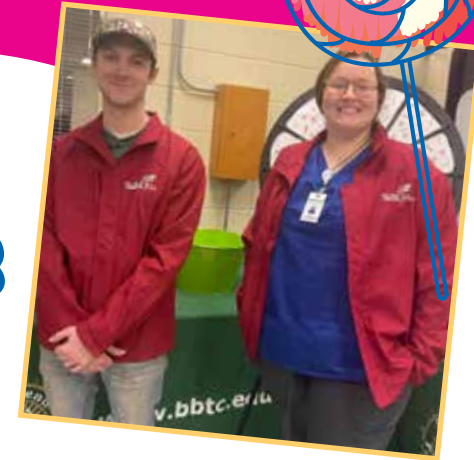
| SUNDAY | MONDAY                              | TUESDAY              | WEDNESDAY | THURSDAY | FRIDAY | SATURDAY |
|--------|-------------------------------------|----------------------|-----------|----------|--------|----------|
| 1      | 2<br>STAFF PLANNING DAY             | 3                    | 4         | 5        | 6      | 7        |
| 8      | 9<br>ADULT ED/SUMMER WELDING BEGINS | 10                   | 11        | 12       | 13     | 14       |
| 15     | 16                                  | 17                   | 18        | 19       | 20     | 21       |
| 22     | 23                                  | 24                   | 25        | 26       | 27     | 28       |
| 29     | 30                                  | Have a great summer! |           |          |        |          |

A decorative illustration at the bottom of the calendar depicts a sunny beach scene. It features a blue sky, a clear blue ocean, and a sandy beach with scattered seashells and two red stars. On the right side, there is a red and white striped beach chair, a red and white lifebuoy, and a beach ball. A green beach umbrella is partially visible in the background.

# DRESS CODE AND GROOMING

A student's apparel and grooming shall be the responsibility of the individual student and their caregivers/guardians. Each student is expected to dress appropriately in such a manner that is respectful to self and others. Dress and grooming shall be clean, healthy, and safe, and shall not be permitted to disrupt the teaching and learning environment. Items that when worn together are usually indicative of gang memberships or apparel that contains a message that is obscene or promotes illegal activities, drugs, discrimination, alcohol, or tobacco products shall not be permitted on school grounds or at school sponsored functions. Taylor County schools are designed to promote safety and good hygiene as well as allow students the convenience of dressing comfortably while at school. Encouraging students to dress appropriately for school will prepare them to be productive members of society. Administrative discretion will apply in some cases.

Any student wearing inappropriate clothing will be asked to change clothes. If no other clothing is available, a caregiver will be contacted to bring a change of clothing, and the discipline matrix will be followed. If a caregiver or guardian cannot bring appropriate clothing, the student will remain in ISS for the school day and the discipline matrix will be followed.





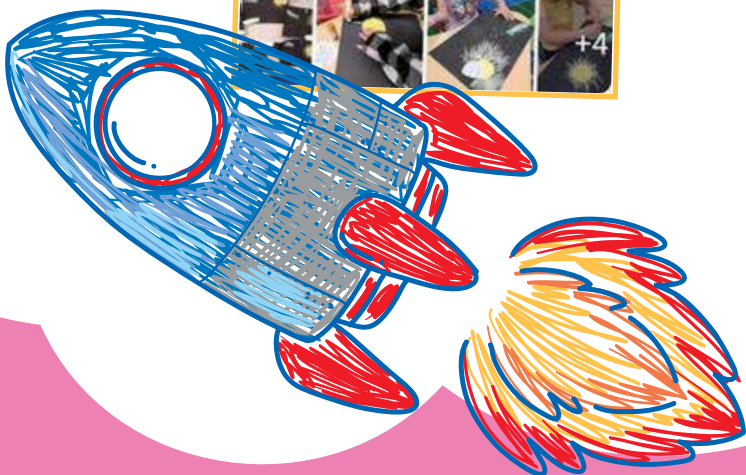
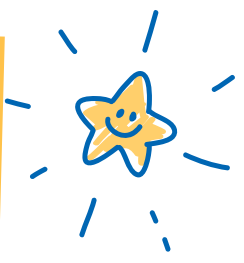
- Shorts, Skirts, Skorts and Dresses: Clothing should be an appropriate length (when standing), including slits and holes.
- Dresses and skirts should be loose fitting.
- Shirts: Shirts, tops, jackets, dresses, or blouses should cover all aspects of the bosom, chest, back, and sides.
- Cleavage should not be visible.
- Tank tops, tube tops, halters, or spaghetti straps are not permitted as a primary top.
- Sheer materials, extremely tight clothing, beachwear, and sleepwear/pajamas/bedroom clothes are not permitted.
- Undergarments should not be visible at any time.
- Pants: Pants should fit appropriately, without sagging, and hide all undergarments (e.g. underwear, boxers, and shorts).
- Any pants with holes or slits that are higher than an appropriate length (when standing) are not permitted.
- Yoga pants/ tights/form fitting pants should not be sheer or translucent.
- You are required to follow the standard of dress at all times while attending school. Refer to student handbook.





# JULY 2025

| SUNDAY   | MONDAY | TUESDAY | WEDNESDAY | THURSDAY | FRIDAY  | SATURDAY |
|--|--------|---------|-----------|----------|---|----------|
|  |        | 1       | 2         | 3        | 4   | 5        |
| 6  | 7      | 8       | 9         | 10       | 11  | 12       |
| 13   | 14     | 15      | 16        | 17       | 18  | 19       |
| 20   | 21     | 22      | 23        | 24       | 25  | 26       |
| 27   | 28     | 29      | 30        | 31       |  |          |



# AUGUST 2025

SUNDAY

MONDAY

TUESDAY

WEDNESDAY

THURSDAY

FRIDAY

SATURDAY

*Get Ready for...*

## Another School Year

3

4

5

6

7

8

9

10

11

12

13

14

15

16

17

18

19

20

21

22

23

24

25

26

27

28

29

30

31



TAYLOR COUNTY SCHOOL DISTRICT

# FOCUS PARENT PORTAL REGISTRATION

The Taylor County Schools Parent Portal, known as FOCUS, serves as a valuable resource for caregivers of students within the Taylor County School District. This online platform enables caregivers to conveniently monitor their children's academic progress. Through FOCUS, accessible via the internet, caregivers can easily track homework assignments, upcoming tests, and their children's performance across classes. Teachers consistently update FOCUS with the most recent grades and class-related information from their grade books. Accessible with unique usernames and passwords, both caregivers and students can log in to obtain relevant information.

Taylor County Schools utilizes FOCUS to efficiently distribute vital information to families promptly.



The Focus Parent Portal is a tool designed to enhance communication and involvement for you in your child's education.

### TO REGISTER, YOU WILL NEED:

- YOUR PERSONAL EMAIL ADDRESS**  
The email address used to create your Focus Portal Account should be the one you have on file at your child's school.
- YOUR CHILD'S STUDENT ID**
- YOUR CHILD'S DATE OF BIRTH**



**Have more than one student in the district?**  
Regardless of the number of students enrolled, you only need to create one Focus Parent Portal account.

➤➤➤ <https://www.taylor.k12.fl.us>



◀◀◀ From the home page, click FOCUS

➤➤➤ Login or use the buttons below to register for a new account, add a student, or if you have forgotten your login information



➤➤➤ You can also download the TCSD FOCUS Community App

