

hi



Algebra I 2025–2026

with Mrs. A. Smith

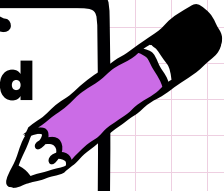


Description

Algebra I introduces students to variables, algebraic expressions, equations, inequalities, functions, and all their multiple representations. In this class, students will develop the ability to explore and solve real-world application problems, demonstrate the appropriate use of graphing calculators, and communicate mathematical ideas clearly. This course lays the foundation for mathematical literacy that will help students be successful in every subsequent course in mathematics
Website: Math Nation

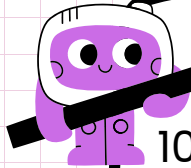
Materials Needed

- ☐ 3 ring binder or folder
- ☐ Notebook & graph paper
- ☐ Mechanical Pencils
- ☐ Casio TI FX 300ES Plus or 115 ES plus
- ☐ Earbuds (NOT wireless)



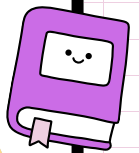
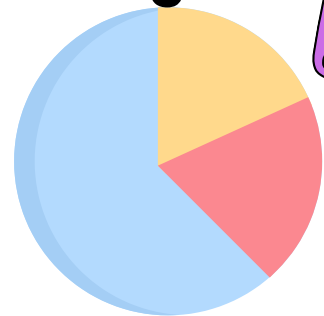
My Schedule

10 Algebra I 1st block
10 Algebra I 2nd block
10 H Algebra I 3rd block
Planning 4th block



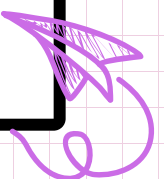
Grading

Daily 10%
Quiz 30%
Test 60%



Contact

asmith@dalecountyboe.org
or Remind app





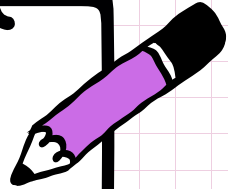
Food and Drink

No food or drinks are allowed in the classroom! I **DO NOT** want to see it. All backpacks will remain in the hallway. No gum or candy (unless I provide it for you)

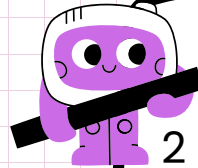


Test

Ask for additional help **BEFORE** the test.



Make up tests may be a different test and the format may change. If you are present the day of the test, you're responsible for taking it. Test will be on computer/paper. Test are announced in **ADVANCE**.



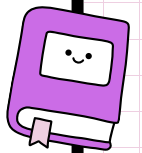
Bathroom Pass

2 bathroom passes per 9 weeks – for emergencies **ONLY**

Over the limit = detention

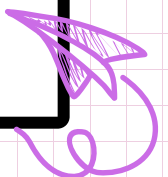
Consequences

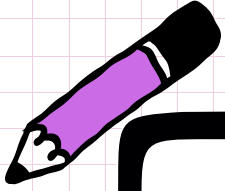
- 1.Warning
- 2.Break Detention
- 3.Parent contact/After School Detention
- 4.Office Referral



Extra Credit

I do **NOT** offer extra credit.





Signature

I have read and understand Mrs. Amy Smith's Algebra I syllabus.
This includes awareness of grading, make-up, and disciplinary policies.

Student: _____

Parent/Guardian: _____

The below information is used to contact parent(s) about concerns, grades, and/or behavior.

Parent Contact email: _____

OR parent's cell # _____

This form is due Wednesday, August 13.