



2024–2025 Professional Learning Calendar

The mission of the ESU 9 Professional Learning Team is to lead, inform, and provide customized professional learning experiences designed to strengthen and support continuous growth.



Professional Learning Team (left to right):

Kristen Slechta— Professional Learning Specialist

Katie Soto — Synergy Specialist, Data Steward & Instructional Coach

Amy Schultz— Professional Learning Director

LaRaesha Kugel — Professional Learning Specialist & Instructional Coach

Laura Ochsner — Professional Learning Coordinator

Educational Service Unit 9
5807 Osborne Drive West
Hastings, NE 68901
P: 402–463–5611

TABLE OF CONTENTS

REGISTRATION GUIDELINES.....	4
PL EVENTS LIST.....	5
PROFESSIONAL LEARNING MENU.....	6
EMPOWERING LEADERS SERIES.....	7
CONTENT AREA CADRES.....	8
YOUTH EVENTS.....	9
ADDITIONAL INFORMATION.....	10
GEER UP WITH PITSCO ROBOTICS.....	11
REGION 4 CONTINUOUS IMPROVEMENT DAYS.....	12
TEACHING & LEARNING COLLABORATION.....	13
INSTRUCTIONAL STRATEGIES FOR ENGLISH LEARNERS.....	14
STATEWIDE SUPPORT.....	15
PROFESSIONAL LEARNING SOCIAL MEDIA INFORMATION.....	16

REGISTRATION GUIDELINES

Registration Instructions:

1. Go to <http://www.esu9.org>
2. Click on "Event Registration" in the Events tab on the top menu bar.
3. If you have already created a Connect account, use your email address and the password you created to log in.
4. If you have NOT created a Connect account, click "Create a New Account". Fill in your information and create a password. At the bottom of the page, click "Create My Account". Once you receive email notification that your account is activated, you can use your email address and password you created to log in.
5. Once you have logged on to the Connect system, select "Section List" from the menu on the right. This is a chronological list of the events available to register for.
6. Click on the title of the event you wish to register for. This will give you more information about the event as well as the option to "Register Me for this Section".
7. You will be asked to verify you information, including payment information. Once you have verified your registration information, click "Register for this Workshop" at the bottom of the page.
8. You will receive email confirmation of your registration.

Registration Policy:

- Register online at <https://connect.esu9.org>
- Participants will be awarded stipends, substitute costs and materials based on consortium participation.
- All districts are welcome to participate regardless of consortium participation; however, a higher registration fee may be assessed. See individual registration costs for each workshop.
- Cancellation Policy: All registrations are non—refundable but fully transferable to another participant. Caterers require us to place food orders a week in advance. As a result, if a person cancels less than one week out, the person/district will be charged a \$20.00 fee.
- "No—shows" (individuals who have not contacted ESU 9 to cancel registrations) will be responsible for their registration fee and any other materials fees incurred.



PROFESSIONAL LEARNING EVENTS

2024–2025

August

27th – Andi McNair: Catch the Perfect Wave of Differentiated Learning!

28th – Empowering Leaders Day 1

September

17th – Pitsco Robotics Day

18th – Let's Get Cookin' New Teachers Day 3

25th – Future Problem Solvers #1

October

1st or 2nd – NDE CIP Training at ESU 10 (choose 1)

9th – HQIM Implementation Series Day 3

11th – HAL Day at Hastings Museum

17th – Empowering Leaders Zoom Session

21st – Teaching & Learning Collaboration (TLC)

29th – Title I Cadre

30th – Media Specialists Cadre

31st – Counselor's Cadre

November

5th – Instructional Strategies for English Learners with Anne Hubbell

20th – Future Problem Solvers #2

December

3rd – PE Cadre

January

15th – Future Problem Solvers #3

17th – Social Studies Cadre

23rd – Social Media Teams

28th – ESU 9/10/11 CTE Collaboration Day

30th – Empowering Leaders Day 2

February

4th, 5th, 6th – Quiz Bowl

10th – Music Cadre

13th, 14th, & 24th – District Meetings

March

3rd & 4th – District Meetings

21st – CTE Leadership Team Meeting

April

1st – Chess Tournament

3rd – Empowering Leaders Zoom Session

9th – Art Cadre

29th – Invention Convention

30th – State Quiz Bowl

ESU 9 PROFESSIONAL LEARNING MENU

5807 Osborne Drive West, Hastings NE, 402-463-5611, prodev@esu9.us

LARAESHA KUGEL LAURA OCHSNER AMY SCHULTZ KRISTEN SLECHTA KATIE SOTO

CONTINUOUS IMPROVEMENT / MTSS

Mission/Vision
Data Analysis Facilitation: Strengths, Challenges, & Implications
Goal Setting
Action Planning: MTSS Data-driven decision making, team support, tiered supports
Comprehensive Needs Assessment 2.0
Nebraska MTSS Self-Assessment

CURRICULUM

Adoption and Implementation of High Quality Instructional Materials (HQIM)
Design & Development: Standards Alignment, Implementation, Prioritization, Learning Targets & Success Criteria

INSTRUCTIONAL FRAMEWORK

Framework Prioritization
Professional Goal Setting
Collaborative Groups
Reflection Practices: Learning Walks, Instructional Rounds, and Video Recording

LEADERSHIP

Principal Support & Effective Feedback
High Reliability Schools Facilitation
Adaptive Schools
Principal/Teacher Evaluation
PLC's: What and How

ASSESSMENT LITERACY

Equitable Grading Practices
Formative/ Summative
NSCAS Growth
NWEA MAP Growth and Reading Fluency
Acadience Reading

TECHNOLOGY INTEGRATION

Canvas LMS
Google
Canva for EDU
Instructional Technology Tools
Artificial Intelligence (AI)

INSTRUCTION BEST PRACTICE

Content Specific Support (i.e. core, fine arts, and CTE)
Explicit Instruction
Vocabulary
Social/ Emotional Learning

YOUTH EVENTS

Quiz Bowl
Future Problem Solvers
Chess Tournament
Invention Convention
Social Media Teams
Student Art Exhibit
Science Olympiad

CONTRACTED SERVICES

DATA STEWARD

Data Collection and Analysis,
Dashboards & Infographics
Data-Driven Decisions
Synergy

INCLUSION

Creating a model, coaching and co-planning

INSTRUCTIONAL COACHING

Collaborative planning, observational feedback, modeling, analysis of student work, sharing of resources
Cognitive Coaching
Crucial Conversations
Restorative Practices

EDUCATION & TRAINING PROGRAM OF STUDY

Grow Your Own Educators with a 3 course program of study with Work Based Learning embedded.

INVEST IN YOUR STAFF - INVEST IN OUR SUPPORT

Empowering Leaders Series

The Empowering Leaders Series is designed for principals, curriculum directors and teacher leaders. Possible topics include:

- Featured Speakers
- Professional Learning Updates
- NDE Updates
- Teacher/Principal Evaluation
- Instructional Models
- Leadership Development
- Continuous Improvement



EMPOWERING LEADERS 24-25 Schedule

AUGUST

28

In Person

OCTOBER

17

Zoom

JANUARY

30

In Person

APRIL

3

Zoom

Content Area Cadres

2024–2025 Schedule

Ideas

Collaborations include time to share ideas, strategies and research about what is working in classrooms across the region. Sharing about success allows for professional growth, shared leadership and co–collaboration to make what works even more powerful.

Opportunity

Featured Speakers will provide the opportunity to experience new information and practices and the chance to infuse new understanding into a range of “best practice” tools.

Outcomes

Put it all together. Participate in ongoing conversations regarding the work of developing an engaged and enriched learning environment.

October 9 – HQIM Implementation (Language Arts, Math & Science)

October 17–19 – NATS Conference at UNK (in place of Science Cadre)

October 29 – Title I Cadre

October 30 –Media Specialists Cadre

October 31 – Counselor’s Cadre

December 3 – PE Cadre

January 17– Social Studies Cadre

February 10 – Music Cadre

March 21 – CTE Leadership Meeting

April 9 – Art Cadre

Date TBD – Athletic Director’s Cadre



Youth Events

Future Problem Solvers

September 25
November 20
January 15

Social Media Teams

January 23

Quiz Bowl

February 4 – Elementary
February 5 – High School
February 6 – Junior High

**Snow dates – February 18 & 19

***State High School Quiz Bowl – April 30

Chess Tournament

April 1

Invention Convention

April 29



Additional Information

On–Site Support

The Professional Learning Team is committed to supporting the individual needs of each district; therefore, we are scheduling on–going, on–site support for districts. These projects are designed to target specific needs of the many learners served by a school. Contact the PL Team (prodev@esu9.us) to schedule targeted professional learning events, technology integration, customized support and more for your classroom, program or district today.

District Meetings

February 13th, 14th, & 24th
March 3rd & 4th

Attention: Superintendents, Principals, and Curriculum Directors

These meetings will provide the opportunity for districts to collaborate with the Professional Learning staff in conducting a district–specific needs assessment regarding professional learning needs for the upcoming year. By collaborating with the PL Team, districts will have the opportunity to plan professional learning days and request specific on–site trainings.

Districts will have the opportunity to sign up for a specific time to meet with the PL Team over the course of these four days. Meetings will last approximately 75 minutes.

Contracted Services

Invest in your staff - Invest in our services



Instructional Coaching

- Collaborative planning, observational feedback, modeling, analysis of student work, sharing of resources
- Cognitive Coaching
- Crucial Conversations
- Restorative Practices



Data Steward

- Data Collection and Analysis,
- Dashboards & Infographics
- Data-Driven Decisions
- Synergy



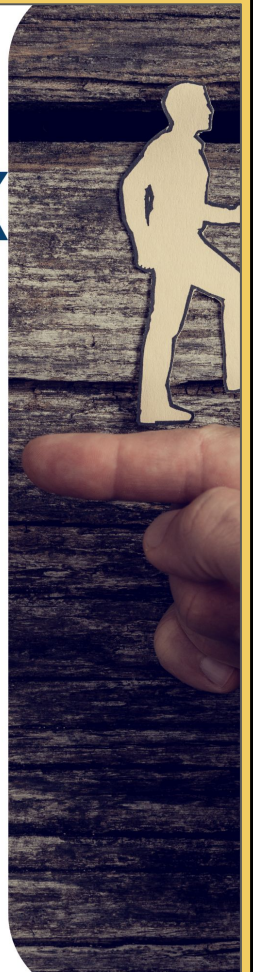
Inclusion

- Creating a model, coaching and co-planning



Education & Training Program of Study

- Grow Your Own Educators with a 3 course program of study with Work Based Learning embedded.





GEER UP WITH PITSCO ROBOTICS

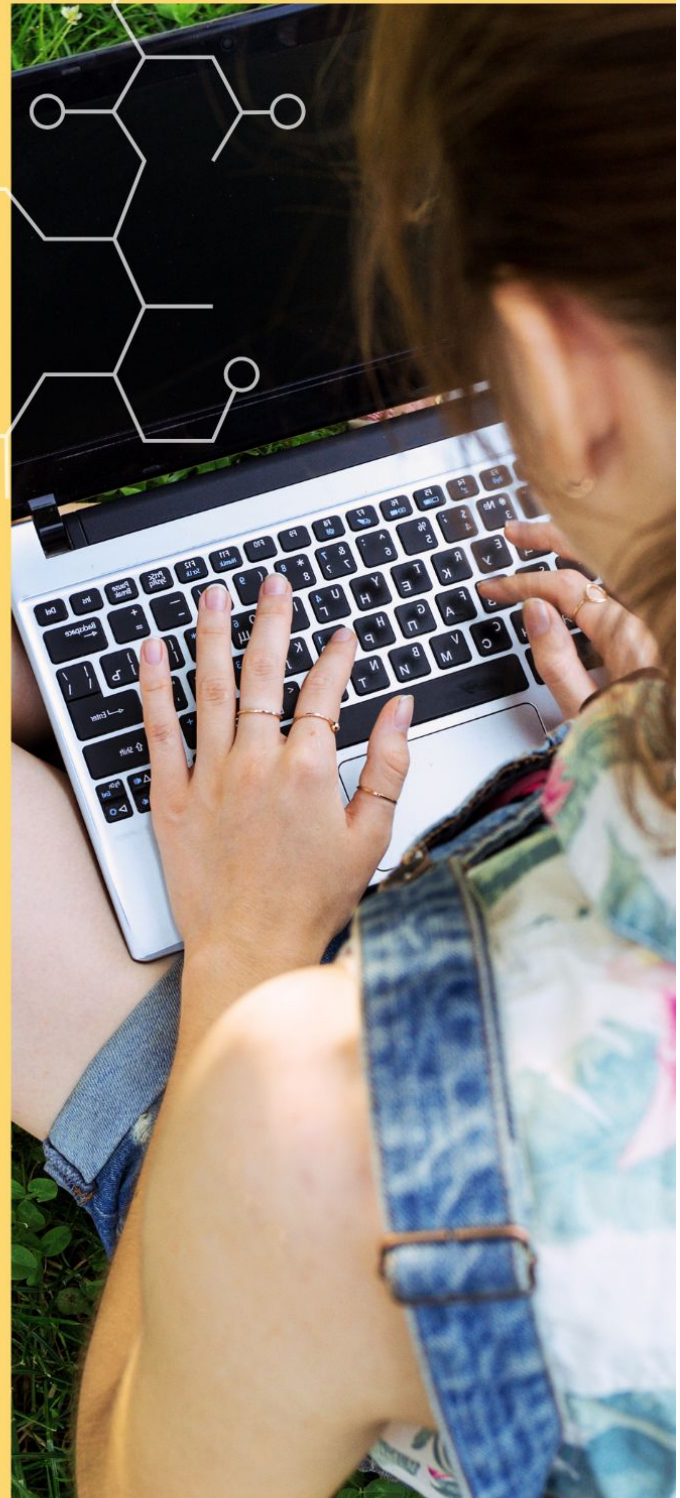
SEPTEMBER 17, 2024

PITSCO
EDUCATION



Join ESU 9 staff and Preston Frazier, Pitsco Education Advisor for a fun day of exploring all things Robotics and Coding that Pitsco has to offer!

This one day workshop will begin with a bang, introducing the Nebraska GEER Up Program Resources. Next, a whirlwind of activities from Bee-Bot to Code Cubes will keep participants buzzing until lunch. The afternoon will focus on Tetrix Prime building and coding, with a sprinkle of strategy talks. Wrapping it all up with a Q&A, the day will be a rollercoaster of learning and resource sharing!



bit.ly/ESU9GEERup



9:00 - 3:30



ESU 9, 5807 Osborne Drive
West, Hastings, NE 68901

Region # 4 Continuous Improvement Days

1 Day Workshops

Dates/Time:

Tues. Oct. 1st from 9 a.m.-3p.m.
or

Wed. Oct. 2nd from 9a.m.-3p.m.

Host Location: ESU 10

76 Plaza Blvd

Kearney NE, 68845

[Registration Link](#)

(Region based on NeMTSS Regional Assignments)



Continuous
Improvement

Coherence

Rule 10

Collaborative

Professional
Development

Student Centered

Data Driven

Mission/Vision

Communication

Supportive

AQuESTT

Procedures

Strategies

Goals

Demographics



Presented
by





Teaching & Learning Collaboration



Keynote Speaker: Tim Clue October 21, 2024



Long before he was an educator, professional speaker, comic, published playwright and father, Tim was an undiagnosed hyper-active dyslexic rug rat raised in a small rural town outside of Chicago.

By 24, Tim was an award-winning college professor and coach of a nationally-recognized speech team. By 30 he established himself as a nationally recognized comic opening for Jerry Seinfeld and performing for a former President, George Bush Senior. By 40 Tim was a published playwright. Now this transformative speaker, educator and writer is helping reshape the way educators build culture and connection for minds in the making.

Tim transformed his struggles in the classroom to become the teacher he never had and now mentors a nation into rethinking our 21st century education. "We must create lifelong curious learners more capable to light the path to their own journey."

Visit Tim's website to learn more:
<https://www.timclue.com/>

Time: 8:30 - 3:30

Location: Adams Central Jr-Sr High School

Register online at:
<https://connect.esu9.org/>

If you are interested in sending your entire staff, contact Laura Ochsner (laura.ochsner@esu9.us).

TLC will also feature breakout sessions from area educators and a closing Keynote from Scott Phillips, 2024 NE Teacher of the Year!



ESU 9 Presents



ANNE HUBBELL

INSTRUCTIONAL STRATEGIES FOR ENGLISH LEARNERS

Join Anne Hubbell, NDE Title III/ EL Specialist for a day of strategies for working with English Learners! Participants will explore ELPA21 assessments, our ELP standards and how they align to content area standards, and dig into evidence-based practices that enhance academic language.



**November
5, 2024**



**9:00 -
3:30**



**ESU 9
Hastings**

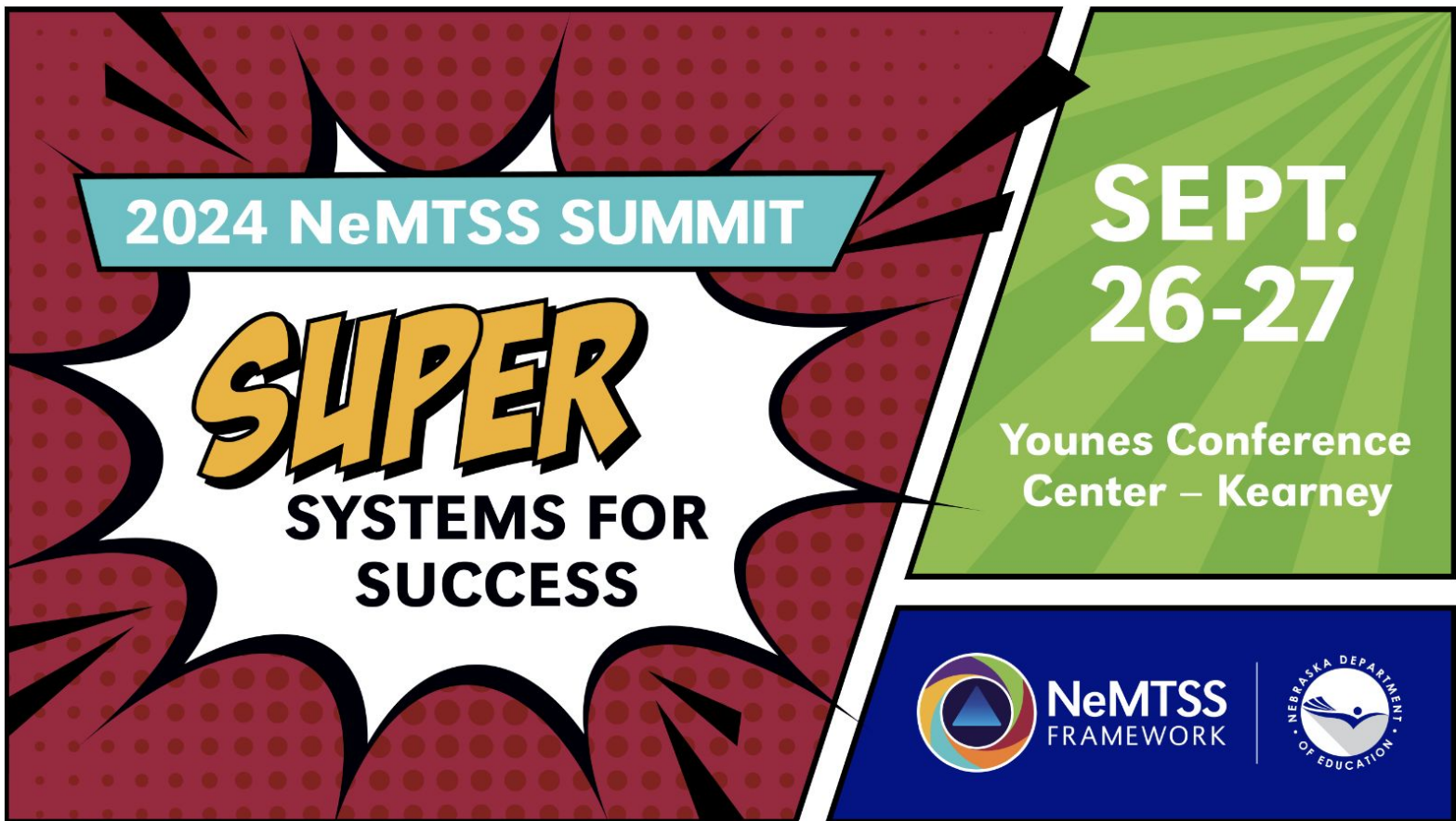
Register Now



bit.ly/3WOymsg



Statewide Support



2024 NeMTSS SUMMIT

SUPER
**SYSTEMS FOR
SUCCESS**

**SEPT.
26-27**

**Younes Conference
Center – Kearney**

 **NeMTSS
FRAMEWORK** | 



ELL NETWORK
Sharing Ideas. Building Futures.

2024-25 ELL Network Sessions

Register at www.esu4.org > Events > [Register](#)

(Contact [Megan](#) for registration support.)

Dates

- **September 20, 2024** (*NCSA, 440 S 13th Street, Lincoln), 9 am - 3 pm
- **January 24, 2024** (ESU 6, Milford), 9 am - 3 pm
- **April 14 or 23, 2024** (Tentative, Details Forthcoming)
- **May 29, 2025** EL Program Review Technical Assistance & Work Day (Location TBD), 9:30 am - 2:30 pm

Keeping you *connected*



Please complete our evaluation bit.ly/evalESU924-25 OR



Network: ESU9 Guest
Password: esuguest



@esu9pd
#esu9



esu9NE
#esu9



Professional Learning Team



@amyschultz77



@kristen_slechta



@ktmsoto



@laraeshakugel



@lochsner9

**Sign Up for
Listserv Emails
& Updates**



Questions regarding workshops, services or resources?
Contact us:



Amy Schultz – amy.schultz@esu9.us



Kristen Slechta – kristen.slechta@esu9.us



Laura Ochsner – laura.ochsner@esu9.us



LaRaesha Kugel – laraesha.kugel@esu9.us



Katie Soto – katie.soto@esu9.us