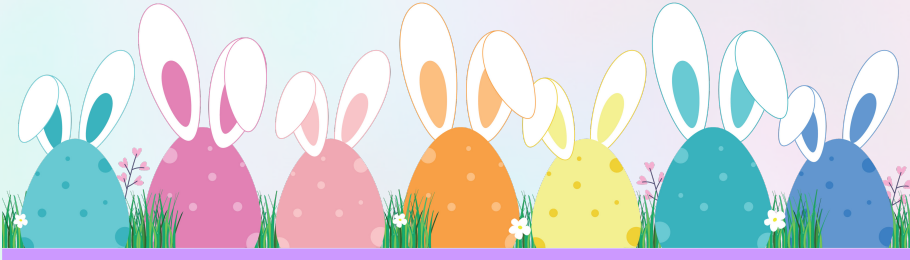


TECH TIMES

Monthly Newsletter



Inside this issue:

Spring Clean Your Tech	Pg. 1
Did You Know?	Pg. 1
The 5 M's of Education Technology	Pg. 2
International Women in Tech Day	Pg. 2
You Now Have Google Gemini!	Pg. 3



Did You Know?

The "404 Not Found" error message was named after Room 404 at CERN, where the World Wide Web (WWW) was created. It was the room where the first web server was housed.

SPRING CLEAN YOUR TECH:

- Before cleaning, always power down and unplug your devices.
- Use a clean, dry microfiber cloth to wipe down screens and surfaces.
- For stubborn grime, you can lightly dampen a microfiber cloth with a solution of 50/50 water and rubbing alcohol.
- Never use harsh chemicals or cleaners directly on your devices.
- Use a can of compressed air to remove dust from charging ports and speakers.
- Use a can of compressed air to remove dust from your keyboard and then wipe it down with a microfiber cloth.
- Use alcohol-based disinfectant wipes to clean your tech and tech accessories (avoiding any openings).



The "5 M's" of Educational Technology

Educational Technology is a system in which the 5 M's are interrelated and work together for the fulfillment of specific educational objectives. Educational technology must have all of these elements to function properly:

1. **Material** - Includes all the physical and digital resources used in teaching and learning, such as textbooks, worksheets, and online learning modules.
2. **Media** - Covers the various forms of communication used in education, including audio, video, and interactive simulations.
3. **Men** - Refers to the human element, including educators, learners, and anyone involved in the educational process.
4. **Machines** - Encompasses the hardware and technology used in education, such as computers, projectors, and interactive whiteboards.
5. **Methods** - Relates to the instructional strategies and techniques employed by educators, like lectures, discussions, or online learning platforms.

International Women in Tech Day (April 4th, 2025):



Ada Lovelace, a British mathematician, is considered the first computer programmer. In 1842 while as an associate of the inventor, Charles Babbage, she created a program for the Analytical Engine that he built. She programmed the first algorithm intended to be carried out by the machine and she is quoted as saying, "it weaves algebraic patterns, just as the jacquard-loom weaves flowers and leaves."



Her work on the Analytical Engine, particularly her notes, is considered a foundational contribution to computer science. The large-scale programming language Ada, was named in her honor. With an IQ of 160, it is no wonder that she was a gifted, perceptive and knowledgeable mathematician. Ada died in 1852 at just 36 years old.

You Now Have Google Gemini!

Introduction to Gemini for Google Workspace



Large Language Models

These skills were generated by AI. Do you agree this course teaches these skills?  



30 minutes



Introductory



No cost

Gemini for Google Workspace provides customers with generative AI features in Google Workspace. In this learning path, you learn about the key features of Gemini and how they can be used to improve productivity and efficiency in Google Workspace.

When you complete this course, you can earn the badge displayed here! View all the badges you have earned by visiting your profile page. Boost your cloud career by showing the world the skills you have developed!

Google Workspace

Introduction to Gemini
for Google Workspace



COMPLETION BADGE

[Click Here For More Information](#)

Just as a reminder, do not purchase any apps/learning programs for your classroom or let students sign into programs that have not been approved. Programs that our district currently has approval for can be found [here](#).