

OAK VALLEY UNION ELEMENTARY SCHOOL

Transportation Safety Plan

State of California Education code 39831.3.

(a) The county superintendent of schools, the superintendent of a school district, a charter school, or the owner or operator of a private school that provides transportation to or from a school or school activity shall prepare a transportation safety plan containing procedures for school personnel to follow to ensure the safe transport of pupils. The plan shall be revised as required. The plan shall address all of the following:

(1) Determining if pupils require escort pursuant to paragraph (1) of subdivision (d) of Section 22112 of the Vehicle Code.

(2) (A) Procedures for all pupils in prekindergarten, kindergarten, and grades 1 to 8, inclusive, to follow as they board and exit the appropriate school bus at each pupil's school bus stop.

(B) Nothing in this paragraph requires a county superintendent of schools, the superintendent of a school district, a charter school, or the owner or operator of a private school that provides transportation to or from a school or school activity, to use the services of an onboard school bus monitor, in addition to the driver, to carry out the purposes of this paragraph.

(3) Boarding and exiting a school bus at a school or other trip destination.

(4) Procedures to ensure that a pupil is not left unattended on a school bus, school pupil activity bus, or youth bus.

(5) Procedures and standards for designating an adult chaperone, other than the driver, to accompany pupils on a school pupil activity bus.

(b) A current copy of a plan prepared pursuant to subdivision (a) shall be retained by each school subject to the plan and made available upon request to an officer of the Department of the California Highway Patrol. *(Amended by Stats. 2016, Ch. 721, Sec. 2. (SB 1072) Effective January 1, 2017.)*

SCHOOL BUS SIGNAL AND SCHOOL BUS STOPS

Vehicle Code Section 22112

(a) On approach to a school bus stop where pupils are loading or unloading from a school bus, the school bus driver shall activate an approved amber warning light system, if the school bus is so equipped, beginning 200 feet before the school bus stop. The school bus driver shall deactivate the amber warning light system after reaching the school bus stop. The school bus driver shall operate the flashing red light signal system and stop signal arm, as required on the school bus, at all times when the school bus is stopped for the purpose of loading or unloading pupils. The flashing red light signal system, amber warning lights system, and stop signal arm shall not be operated at any place where traffic is controlled by a traffic officer or at any location identified in subdivision (e) of this section. The school bus flashing red light signal system, amber warning lights system, and stop signal arm shall not be operated at any other time.

(b) The school bus driver shall stop to load or unload pupils only at a school bus stop designated for pupils by the school district superintendent or authorized by the superintendent for school activity trips.

(c) When a school bus is stopped on a highway or private road for the purpose of loading or unloading pupils, at a location where traffic is not controlled by a traffic officer, the driver shall, before opening the door, ensure that the flashing red light signal system and stop signal arm are activated, and that it is safe to enter or exit the school bus.

(d) When a school bus is stopped on a highway or private road for the purpose of loading or unloading pupils, at a location where traffic is not controlled by a traffic officer or official traffic control signal, the school bus driver shall do all of the following:

(1) Escort all pupils in prekindergarten, kindergarten, or any of grades 1 to 8, inclusive, who need to cross the highway or private road upon which the school bus is stopped. The driver shall use an approved hand-held "STOP" sign while escorting all pupils.

(2) Require all pupils who need to cross the highway or private road upon which the school bus is stopped to walk in front of the bus as they cross.

(3) Ensure that all pupils who need to cross the highway or private road upon which the school bus is stopped have crossed safely, and that all other pupils and pedestrians are a safe distance from the school bus before setting the school bus in motion.

(e) Except at a location where pupils are loading or unloading from a school bus and must cross a highway or private road upon which the school bus is stopped, the school bus driver may not activate the amber warning light system, the flashing red light signal system and stop signal arm at any of the following locations:

(1) School bus loading zones on or adjacent to school grounds or during an activity trip, if the school bus is lawfully stopped or parked.

(2) Where the school bus is disabled due to mechanical breakdown. The driver of a relief bus that arrives at the scene to transport pupils from the disabled school bus shall not activate the amber warning light system, the flashing red light system, and stop signal arm.

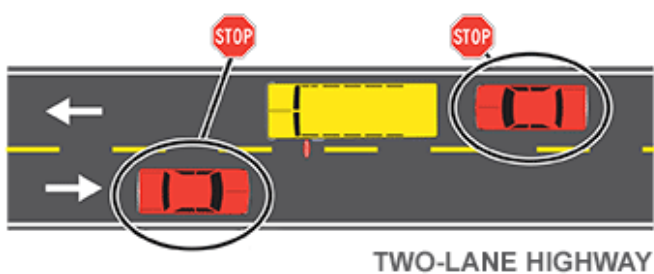
(3) Where a pupil requires physical assistance from the driver or authorized attendant to board or leave the school bus and providing the assistance extends the length of time the school bus is stopped beyond the time required to load or unload a pupil that does not require physical assistance.

(4) Where the roadway surface on which the bus is stopped is partially or completely covered by snow or ice and requiring traffic to stop would pose a safety hazard as determined by the school bus motor carrier.

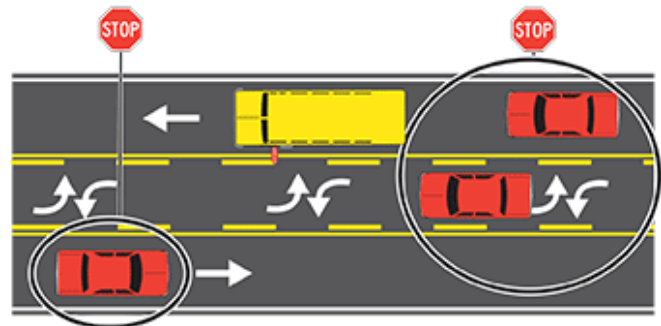
(5) On a state highway with a posted speed limit of 55 miles per hour or higher where the school bus is completely off the main traveled portion of the highway. (6) Any location determined by a school district, with the approval of the Department of the California Highway Patrol, to present a traffic or safety hazard.

(f) Notwithstanding subdivisions (a) to (d), inclusive, the Department of the California Highway Patrol may require the activation of an approved flashing amber warning light system, if the school bus is so equipped, or the flashing red light signal system and stop signal arm, as required on the school bus, at any location where the department determines that the activation is necessary for the safety of school pupils loading or unloading from a school bus.

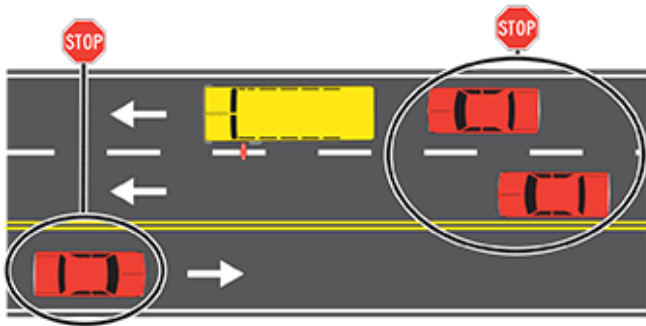
Whenever you see the alternating flashing red lights on a school bus, you **must** stop if you are on a **two-lane highway**...



TWO-LANE HIGHWAY

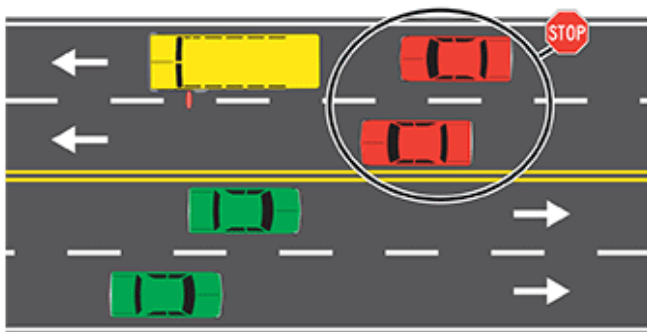


TWO-LANE HIGHWAY WITH CENTER TURN LANE

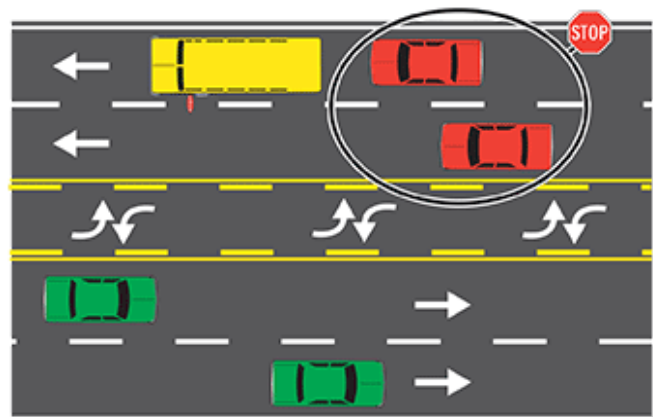


THREE-LANE HIGHWAY

...if you are on a **multiple-lane roadway** and you are traveling in the same direction as the bus you must stop behind the bus until the red lights have been deactivated. Vehicles that are traveling in the opposite direction of the bus are not required to stop.



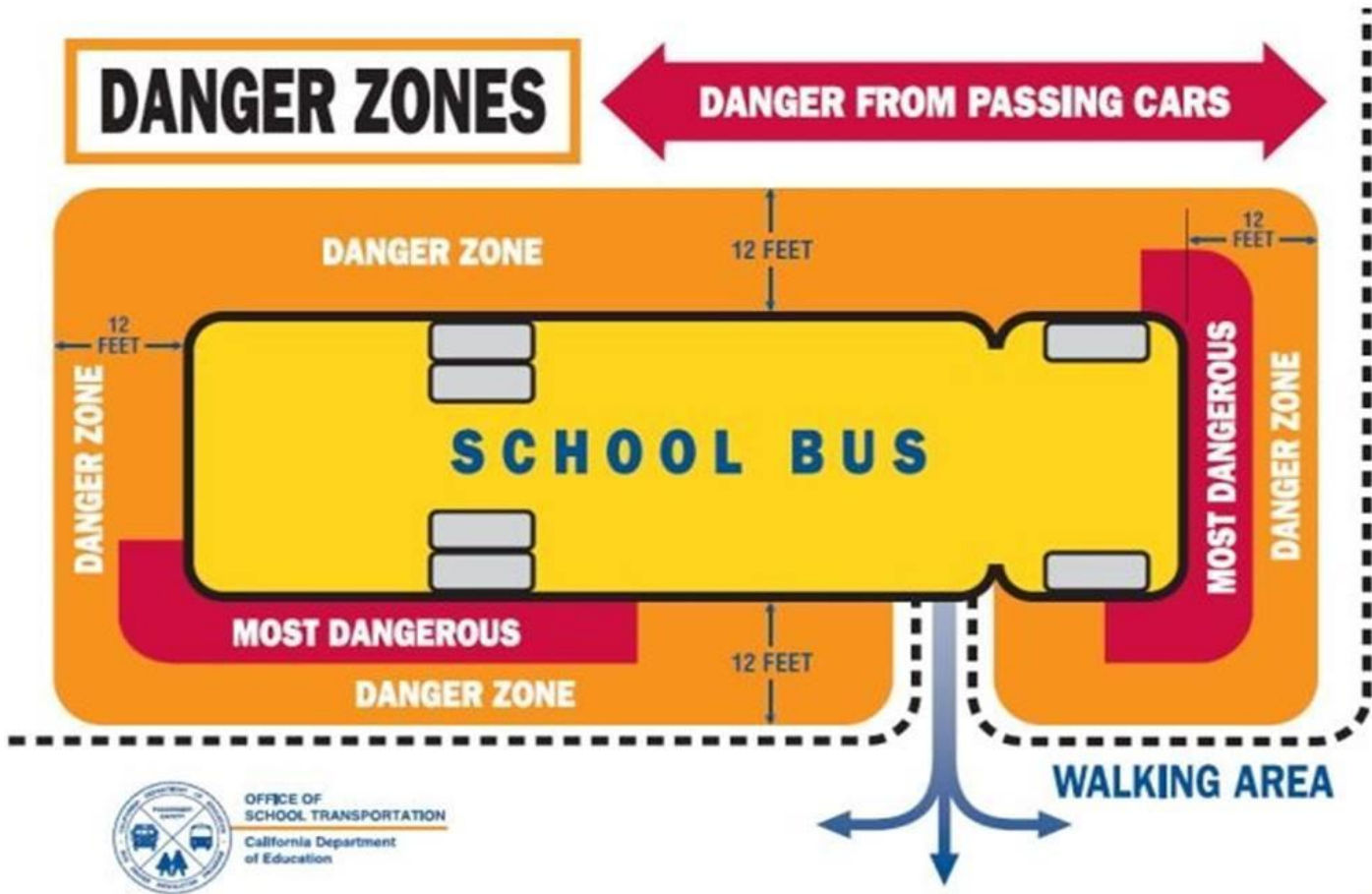
FOUR-LANE HIGHWAY



FOUR-LANE HIGHWAY WITH CENTER TURN LANE

SCHOOL BUS DANGER ZONE

We encourage all parents to remind their students about safety and the dangers that can be encountered by entering the Danger Zone, which is the area around and within twelve feet of the bus. Students need to follow the directions of the bus driver and to stay away from the danger zone areas. Students exiting the bus should remain in the clear view of the bus driver after they exit. Students are expected to travel directly home from the school bus stop



- BOARDING AND EXITING A SCHOOL BUS AT A SCHOOL OR OTHER TRIP DESTINATION

At schools or other trip destinations, students waiting to board are expected to observe the same standards of conduct, which they observe in the classroom. Students should form an orderly line no closer than twelve feet from the entrance door of the bus, then enter the bus without delay and take seats as instructed by the driver or school administrator.

Upon arrival at schools or other trip destinations, students are expected to remain quietly seated until instructed to exit by the driver. Students may cross in front of the bus when instructed to by the driver. Students must **never** cross behind the bus. Students are cautioned against entering the Danger Zone, which is the area around and within twelve feet of the bus. Students exiting the bus should remain in the clear view of the bus driver after they exit.

It is very important to remember California Code of Regulations, Title 5, Section (14103) Authority of Driver States: “Pupils transported in a school bus shall be under the authority of, and responsible directly to, the driver of the bus, and the driver shall be held responsible for the orderly conduct of the pupils while they are on the bus or being escorted across a street, highway or road. Continued disorderly conduct or persistent refusal to submit to the authority of the driver shall be sufficient reason for a pupil to be denied transportation”.

S.B. 1072

Procedures to Ensure a Pupil is Not Left Unattended on a School Bus or School Pupil Activity Bus (39831.3 EC)

In accordance with Education Code 39831.3(a) (4), the Transportation Department deploys the following departmental policy to ensure students are not left unattended on a school bus:

After each run all drivers will physically walk to the rear of the bus and check each row of seats to ensure that there are NO STUDENTS remaining on board. This bus check shall include looking under the bus seats. Upon returning to the Transportation facility drivers will once again physically walk to the rear of the bus and check each row of seats to ensure that there are NO STUDENTS still on board. This bus check shall include looking under the bus seats. No driver shall leave students unattended on the bus.

Drivers shall ensure that all students have been delivered to their proper destinations before leaving their bus.

Child Safety Alert System Vehicle Code section 28160 states that on or before January 1, 2018 the Department shall adopt regulations governing the specification, installation, and use of child safety alert systems. On or before the beginning of the 2018-2019 school year, each school bus, school pupil activity bus, youth bus, and child care motor vehicle, with a few specified exceptions, shall be equipped with an operational child safety alert system. Section 28160(c) defines a child safety alert system as a device located at the interior rear of the vehicle that requires the driver to either manually contact or scan the device before exiting the vehicle, thereby prompting the driver to inspect the entirety of the interior of the vehicle before exiting.

• BUS EMERGENCY PROCEDURES

In accordance with Education Code section 39831.5, all students Pre K - 8th grade will receive safety instructions once each year during a scheduled bus evacuation drill. Instruction on the use of passenger restraint systems, when a passenger restraint system is installed, shall include, but not be limited to all of the following:

- A. Proper fastening and release of the passenger restraint system;
- B. Acceptable placement of passenger restraint systems on pupils;
- C. Times at which the passenger restraint systems should be fastened and released;
- D. Acceptable placement of the passenger restraint systems when not in use.

Prior to departure on a school activity trip, all students riding on a school bus or school pupil activity bus shall receive safety instruction which includes, but is not limited to, location of emergency exits, and location and use of emergency equipment. Instruction also may include responsibilities of passengers seated next to an emergency exit.

BUS RIDER RULES

The following rules apply at all times when students are riding a school bus, including when on school activity trips:

1. Riders shall follow the instructions and directions of the bus driver at all times.
2. Riders should arrive at their designated bus stop **5-10 minutes** before and stand in a safe place at the stop.
3. Riders shall enter the bus in an orderly manner and go directly to their seats.
4. **Riders shall sit down and fasten any passenger restraint systems. Riders shall remain seated while the bus is in motion.**
5. Riders shall not block the aisle or emergency exit with their body or personal belongings.
6. Riders should be courteous to the driver and to fellow passengers.
7. Vulgarity, rude, or abusive behavior is prohibited.
8. Any noise or behavior that could distract the driver, such as loud talking, scuffling or fighting, throwing objects, or standing or changing seats, is prohibited and may lead to suspension of riding privileges.
9. Riders shall not use tobacco products, eat, or drink while riding the bus.
10. Riders shall not put any part of the body out of the window nor throw any item from the bus.
11. Riders shall help keep the bus clean. Riders shall not damage the bus or tamper with bus equipment.
12. Students will refrain from cell phone use when entering and exiting the bus.
13. Upon reaching their destination, riders shall remain seated until the bus comes to a complete stop and upon the signal from the driver, unfasten any restraint system, enter the aisle, and go directly to the exit.
14. Riders should be alert for traffic when leaving the bus and shall follow the transportation safety plan when crossing the road and exiting the bus.

REMINDER: The school bus is an extension of the school site. All rules and regulations pertaining to student conduct while in school shall be in effect at all times when a student is using school transportation.

• Disciplinary action for not cooperating with the school bus rules:

1. Warning
2. Writeup with seating in front seat for 3 days, with call home
3. Writeup with 1 day no bus privileges, with call home
4. Writeup with 2 weeks no bus privileges, with call home
5. Writeup no bus privileges for semester

Note: Depending on the seriousness of the act, the student may lose bus privileges for the remainder of the school year on the first or succeeding offense. Decisions regarding bus discipline will be a collaborative effort between the bus driver, the transportation supervisor and school principal.

FOGGY DAY PROCEDURES

In accordance with California Vehicle Code Section 34501.6, School buses shall not operate when atmospheric conditions reduce visibility to 200 feet or less. When a foggy day schedule is called, the decision will be made by 7:00 a.m. To find out if the District is on a foggy day schedule, please tune to Channel 18 or [18 Website](#).

Bus drivers are authorized to use their discretion to find a safe place to pull over until they determine it is safe to continue on route. At no time will bus drivers travel at a speed that is unsafe for conditions. This may cause a bus to run later than usual.