

**Tattnall County Schools
Annual Title I Parent Meeting
2024 - 2025**



South Tattnall Elementary School

In Person Meeting

August 27, 2024

4:00 p.m.



Presenters

Destiny Levant, Principal

Calysta DeLoach, Academic Coach

Jessica Dutton, Academic Coach

Vielka Flowers, Tattnall County Schools
Translator



Welcome

South Tattnall Elementary is proud to be a partner with parents in educating our community's children!



Title I Annual Parent Meeting Agenda

- ❖ What is a Title I School?
- ❖ How does our district/school spend Title I money? How is Title I Parent and Family Engagement money spent?
- ❖ What is required by law for Parent and Family Engagement?
- ❖ What are our school's Title I Schoolwide requirements?
- ❖ Schoolwide Program participation – Past and Present
 - What are our School Wide goals?
 - What programs/supports are in place to help students?
 - What is the state's grades report for our school?
- ❖ What curriculum does our school use?
- ❖ What tests will my child be taking?

Title I Annual Parent Meeting Agenda continued....

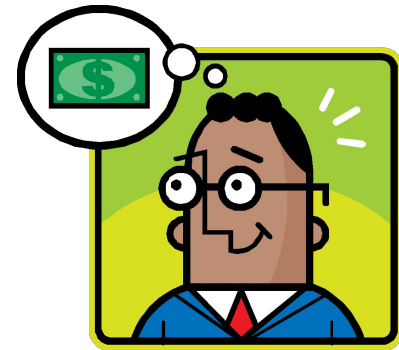
- ❖ Does my child's teacher meet professional qualifications and a parent's right to know?
- ❖ What opportunities does the school provide for family engagement?
- ❖ How responsive will the school be to my questions when staff is contacted?
- ❖ McKinney-Vento Education for Homeless Children and Youth
- ❖ Closing and evaluations
- ❖ BOE Contact Information

What is a Title I school?

- ❖ Title I is the largest federally funded program for elementary, middle, and high schools.
- ❖ The U.S. Department of Education provides each state with an allocation based on census poverty data.
- ❖ The focus of the Title I program is on helping all students meet the same high standards expected of all children.
- ❖ For more information visit Georgia Department of Education website at www.gadoe.org.
- ❖ **All** of Tattnall County schools are Title I schools.



Title I Funding



- ❖ Title I funds may only be used to supplement, not supplant existing services.
- ❖ Our district/school utilizes the 1% of our Title I funds for parent engagement – this pays for our student handbooks, agendas, printing, parent communication, parent newsletters, parent and family engagement activities, translations and interpretation, family resource centers, and other parent resources.
- ❖ Title I meeting supplies/materials.
- ❖ If you have any questions about the Title I budget for the county, please contact Dr. Tisha Holland at 557-4726.



Title I Parent and Family Engagement Requirements

- ❖ District Parent and Family Engagement Policy
 - (Available at www.tattnallschools.org under Departments tab then select Federal Programs from drop down.)
 - Available in the Student Handbook
- ❖ School Parent and Family Engagement Policy
- ❖ School-Parent Compact
- ❖ Annual Title I Parent Meeting (prior to November 1st)
- ❖ Annual Evaluation

While the ESSA has many requirements, there is a strong focus throughout the law on parent and family engagement notification and involvement.....

LEA Parent and Family Engagement Policy ESSA Section 1116 (a) (2)

Each Local Educational Agency (LEA) that receives Title I funds must jointly develop, and agree on with, and distribute to parents and family members of children receiving services a written parent and family engagement policy. The LEA parent and family engagement policy outlines how the district will implement programs, activities, and procedures for the engagement of parents in Title I programs. The policy will establish the district's expectations for parent and family engagement and how the district will carry out the parent and family engagement requirements.

School Parent and Family Engagement Policy

ESSA Section 1116 (b) and (c)

Each school that receives Title I funds must jointly develop, agree on with, and distribute to parents and family members of children receiving services a written parent and family engagement policy. The school parent and family engagement policy describes how the school will carry out the parent and family engagement requirements to ensure effective engagement of parents and to support a partnership among the school, parents, and the community to improve student academic achievement.

School-Parent Compact

ESSA Section 1116 (d)

Each school that receives Title I funds must jointly develop and revise with parents a school-parent compact as part of the school-level parent and family engagement policy. The school-parent compact is an agreement that outlines how parents, the entire school staff, and students will share the responsibility for improved student academic achievement and the means by which the school and parents will build and develop a partnership to help children achieve the state's high standards.

Annual Title I Parent Meeting

ESSA Section 1116 (c) (1)

- ❖ Convene an annual meeting, at a convenient time, to which all parents of participating children shall be invited and encouraged to attend, to inform parents of their school's participation under this part and to explain the requirements of this part, and the right of the parents to be involved.

Annual Evaluation

ESSA Section 1116 (a) (2) (D) & (E)

- ❖ Each Local Educational Agency (LEA) that receives Title I funds must conduct an annual evaluation of the content and effectiveness of the parent and family engagement policy in improving the academic quality of the Title I schools, including identifying possible barriers to greater participation of parents in activities and programs.

Title I Schoolwide Program requirements & participation

- ? A Title I Schoolwide Program (SWP) addresses the educational needs of **all students** with comprehensive strategies for improving the whole school so that every student achieves high levels of academic proficiency.
- ? SWP can improve academic achievement throughout a school so that **all students**, particularly the lowest-achieving students, demonstrate proficiency related to the state's academic content standards.
- ? SWP builds on schoolwide reform strategies, rather than separate, add-on services.
- ? The Title I Annual Schoolwide Plan is developed with input from various stakeholders.
- ? Title I districts and schools are required to conduct a comprehensive needs assessment to identify student and staff needs and to determine appropriate programs, services and activities.

STES' Schoolwide Goals

- During the 2024-2025 school year, staff will focus on direct instruction that will lead to an increase in achievement (scoring Proficient and above) in the areas of ELA and Math across all student subgroups by 3% on the Georgia Milestone State Assessment.
- By May of 2025, 75% of students in grades K-5 will be at or above grade level as determined by iReady Diagnostic 3, in the areas of ELA and Math.
- For the 2024-2025 school year, South Tattnall Elementary School will experience a 3% decrease in office referrals from the 2023-2024 school year.



Schoolwide Programs/Supports

- Amplify/CKLA
- 95% Phonics Core Program
 - Decodable Readers
- i-Ready
 - Reading and Math Personalized Instruction
 - i-Ready Teacher Toolbox
- Eureka Squared
- Response to Interventions (RTI)
- Early Intervention Program (EIP)
- Student Support Staff
 - Migrant Paraprofessional
 - ESOL Teachers
 - Interventionists
 - SPED Co-Teachers/Resource Teachers
- Growing Readers Initiative
- ESOL Program
- SPED Program

Schoolwide Programs/Supports

- Check and Connect Mentor Program
- Positive Behavior Intervention and Support (PBIS)
- Student School Day Extension
- Rosetta Stone
- Free Breakfast/Lunch Programs
- Pre-K-5th Grade Open House
- Transition Meetings
 - to Pre-K
 - Pre-K to Kindergarten
 - 5th to 6th Grade
- Parent/Family Engagement Night Activities
- School Council
- Parent Teacher Organization (PTO)

School State Report Card

Add the following link for the Georgia School Grades Report - can show parents how to access each school's state report card. Each school can add a snapshot of their grades report.

[https://schoolgrades.georgia.gov/school-search?f\[0\]=field_district:144](https://schoolgrades.georgia.gov/school-search?f[0]=field_district:144)

School's Curriculum and Testing

Georgia's academic content standards establish high expectations for all students. The Georgia Standards identify what your child needs to know and be able to do in all content areas by grade levels. The Georgia Standards form the framework of everything taught at school.

<https://inspire.gadoe.org/standards>

<https://www.georgiastandards.org/Georgia-Standards>

Amplify.

95



School's Curriculum and Testing

- **Georgia Milestones** is a comprehensive summative assessment program that measures how well students have learned the knowledge and skills outlined in the state-adopted content standards in English-Language Arts (3rd-5th), Mathematics (3rd-5th), and Science (5th grade only).
 - April 29-ELA Section 1
 - April 30-ELA Section 2
 - May 1-ELA Section 3
 - May 6-Math Section 1
 - May 7-Math Section 2
 - May 8-Science Sections 1 & 2
- **WIDA ACCESS** is administered annually (beginning in January) to English Learners in Georgia to measure English learners' social and academic proficiency in English. It determined the progress of ELs in the domains of speaking, listening, reading, and writing from Kindergarten through 12th grade
- **Georgia Alternative Assessment 2.0** is comprised of standardized performance tasks and is intended to provide tiered participation within the assessment for students working at various levels of complexity aligned to the state's curriculum for students with disabilities.



School's Curriculum and Testing

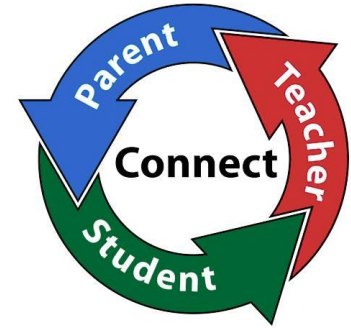
- **i-Ready Reading and Math Diagnostic**
 - Administered 3 times a year (fall, winter, spring) to Kindergarten-5th grades
- **Acadience** (Literacy)
 - Administered 3 times a year (fall, winter, spring) to Kindergarten-5th grades
- **MAP Reading** (Literacy)
 - Administered ??? to 3rd-5th grades
- **PELI** (Early Literacy Skills)
 - Administered 3 times a year (fall, winter, spring) to Pre-K students
- **PPVT** (Vocabulary/Language Development)
 - Administered 2 times a year (fall and spring) to Pre-K students



Student Academic Expectations

- What proficiency level is my child expected to meet?
 - **Georgia Milestones: Level 1-Beginning, Level 2-Developing, Level 3-Proficient, Level 4-Distinguished**
 - ACCESS: Levels 1-6 (Entering to Reaching)
 - GAA 2.0: Levels 1-4
- District-based assessments (i-Ready, Acadience, etc.) have grade level norms/expectations. Parent reports will be sent once all initial testing is completed.
- [Statewide Longitudinal Data System \(SLDS\)](#)
Login to your Powerschool account and click SLDS Portal button. You can look at performance/assessment, attendance, etc.

Parents' Right to Know



- ❖ In compliance with the requirements of the Every Student Succeeds Act, parents may request professional qualifications of student's teacher(s) and/or paraprofessional(s).
- ❖ A copy of notification can be viewed on Tattnall County Schools district page by selecting Departments and Federal Programs from drop down. Copy of notice is located under Parent and Community section.
- ❖ If you wish to request information concerning your child's teacher(s) and/ or paraprofessional's qualifications, please contact the principal at your child's school or Mrs. Gwenda Johnson at the Tattnall County Board of Education (912)-557-4726.

Family Engagement Opportunities

- Parent Portal
- SCHOOLinSITES & School Facebook Page
- Class Dojo
- School Council
- PTO
- Open House
- Grade Nights
- Literacy & Math/Science Nights
- Parents to Lunch
- Comprehensive Needs Assessment Meeting (Spring)
- Parent Newsletters
- Annual Surveys
- Transition Meetings
- Trunk-or-Treat
- Fall Festival
- Scholastic Book Fair (Fall and Spring)

STES' Contact Information

- Destiny Levan, Principal
- Dr. Claudia Martinez, Assistant Principal
- Dr. Angela Young, Assistant Principal
- Haley Nickell, Counselor
- Calysta DeLoach, Academic Coach
- Jessica Dutton, Academic Coach



102 Loves Chapel Rd.
Glennville, GA 30427
(912) 654-3931 (Phone)
(912) 654-4998 (Fax)
Staff Hours: 7:30-3:30 p.m.

School's Responsiveness

Parents can contact teachers through Class Dojo, e-mail (located on the school's website), or by phone at (912) 654-3931



McKinney-Vento Education for Homeless Children and Youth

Tattnall County Board Of Education
2024-2025



What is McKinney-Vento?

- ? The McKinney-Vento Education for Homeless Children and Youth (EHCY) is a program designed to address the problems that homeless children and youth have faced in enrolling, attending, and succeeding in school. Under this program, each homeless child and youth has equal access to the same free and appropriate public education, including preschool, as other students.

McKinney-Vento Law

- ❖ Definition of Homeless Students
- ❖ Individuals whose nighttime residence is NOT:
 - Fixed – stationary, permanent, and not subject to change
 - Regular – used on a predictable, routine, or consistent basis
 - Adequate – sufficient for meeting both the physical and psychological needs typically met in the home (42 U.S.C. § 11434A(2)(B)(i))

“Homeless” includes children who are:

- ❖ Sharing the housing of other persons due to loss of housing, economic hardship, or a similar reason
- ❖ Living in a motel, hotel, trailer park, or camping ground due to lack of alternative adequate accommodations
- ❖ Living in an emergency or transitional shelter
- ❖ Abandoned in hospitals

“Homeless” includes children who are:

- ❖ Living in a public or private place not designed for or ordinarily used as a regular sleeping accommodation
- ❖ Living in a car, park, public space, abandoned building, substandard housing, bus or train station, or similar setting
- ❖ Migratory children

McKinney-Vento Act

Unaccompanied Homeless Youth (UHY)

- ❖ Unaccompanied = not in the physical custody of a parent or guardian
- ❖ There is a 2-Step Process for determining
- ❖ Unaccompanied youth have the same rights as other students experiencing homelessness.

How many are there?

- ❖ **The number of students experiencing homelessness has decreased:** The number of identified students experiencing homelessness in Georgia increased every year from 2011-12 (34,379) to 2018-19 (40,337); however, the number identified in 2019-2020 has decreased (36,753). There was a 9% percent reduction from 2018-19 to 2019-20.
- ❖ According to HUD, the state's homeless population was 7,905 in 2022, including 2,784 people in families with children and 479 unaccompanied homeless youth.
- ❖ In Tattnall County we had the following number of homeless students:
 - ❖ **2018-2019 - 34**
 - ❖ **2019-2020 - 34**
 - ❖ **2020-2021 - 22**
 - ❖ **2021-2022 - 18**
 - ❖ **2022-2023 - 28**
 - ❖ **2023-2024 - 25**

Common Signs of Homelessness

- ❖ Lack of continuity in education
- ❖ Poor health/nutrition
- ❖ Transportation and attendance problems
- ❖ Poor hygiene
- ❖ Lack of personal space after school
- ❖ Social and behavioral concerns
- ❖ Reaction/statements by parent, guardian, or child

Who do I contact for help?

- ❖ The local Homeless Liaison is Dr. Tisha Holland. You can contact her at any time with questions or concerns.

(912) 557-4726

tholland@tattnall.k12.ga.us

146 West Brazell St. Reidsville, Ga
(Board of Education)



Help!

Questions/Evaluations

- ? Please complete the survey at the following link or use the QR Code.
- ? The results of this survey will be utilized to help in the development of the Title I School-Level Parent and Family Engagement Plan and future parent and family engagement activities and events.
- ? If you have a question or suggestions, please contact your child's school at the number previously provided.

https://docs.google.com/forms/d/e/1FAIpQLSd_FpwrDDmTy2HWO RK4h9pCzeqJ3Oz86jZNJ1wzblYl7uMv0w/viewform?usp=sf_link



THANK YOU FOR YOUR SUPPORT

Tattnall BOE Contact Information

Address:

146 West Brazell St.
Reidsville, GA 30453

557-4726
557-3036 (fax)

Central Office Hours:
Monday - Thursday
(8:00-4:30)
Friday
(8:00-4:00)

- ? Dr. Kristen Waters,
Superintendent
kwaters@tattnall.k12.ga.us
- ? Dr. Carla Waters,
Assistant Superintendent
cwaters@tattnall.k12.ga.us
- ? Dr. Tisha Holland,
Federal Programs Director
tholland@tattnall.k12.ga.us
- ? Ms. Tarsha Brown,
Family Engagement Coordinator
tarshabrown@tattnall.k12.ga.us



Tattnall County Schools	www.tattnallschools.org
North Tattnall Elementary School South Tattnall Elementary School	https://ntes.tattnallschools.org http://stes.tattnallschools.org
North Tattnall Middle School South Tattnall Middle School	ntms.tattnallschools.org stms.tattnallschools.org
Tattnall County High School	tchs.tattnallschools.org
Georgia Department of Education	www.gadoe.org
U.S. Department of Education	www.ed.gov
Georgia Standards	www.georgiastandards.org

“Whatever It Takes”



The Tattall County School District is committed to doing whatever it takes to ensure a quality education that affirms ALL students' value and worth and will lead to high school graduation and productive citizenship.