

LEA Name : New Brighton Area SD  
Address : 3225 43rd St  
New Brighton , PA 15066

County : Beaver  
AUN Number : 127045653  
LEA Type : SD

## Annual Financial Report Accuracy Certification Statement

For Fiscal Year Ending

6/30/2019

Pennsylvania Department of Education

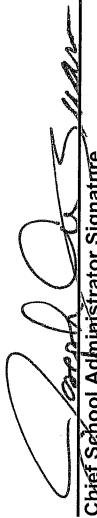
&

Office of Comptroller Operations

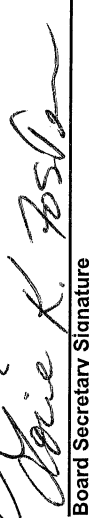
PDE-2056: Intermediate Unit

PDE-2057: School District, AVTS/CTC, Charter School,  
and Special Program Jointure

**CERTIFICATION:** By signing this page I agree that the electronic data submitted is a complete and accurate statement of the financial operations and status of the local education agency for the fiscal year. It has been prepared in accordance with generally accepted accounting principles and established Commonwealth of PA reporting guidelines.

  
Chief School Administrator Signature

12/10/19  
Date

  
Board Secretary Signature

12/10/2019  
Date

Marydenise M Feroce

(724)843-1795 Ext :404

Contact Person

Contact Person Telephone Number

mferoce@nbasd.org

(724)843-6144

Contact Person E-mail Address

Contact Person Fax Number

# Audit Certification

## Annual Financial Report:

For Fiscal Year Ending 6/30/2019

(Pursuant to PA School Code Section 218(b))

LEA Name : New Brighton Area SD

AUN Number : 127045653

County : Beaver

Audit Certification Due:  
12/31/2019

This certification is applicable to the Annual Financial Report data submitted through the Consolidated Financial Reporting System on: 12-10-19 Date

### Auditing Firm:

Mark C Turnley, CPA

CERTIFICATION: By signing this page I agree that the financial statements of the school have been properly audited as noted above pursuant to Article XXIV, and in the auditor's professional opinion, the Annual Financial Report (PDE-2057) submitted on the date referenced is materially consistent with the audited financial statements.

Chief School Administrator

[Signature]  
Signature

12/10/19  
Date

Board Secretary

[Signature]  
Signature

12/10/2019  
Date

Marydenise M Feroce

Contact Person

(724)843-1795

Contact Person Telephone Number

Ext :404

mferoce@nbasd.org

Contact Person E-mail Address

(724)843-6144

Contact Person Fax Number

# NEW BRIGHTON AREA SCHOOL DISTRICT

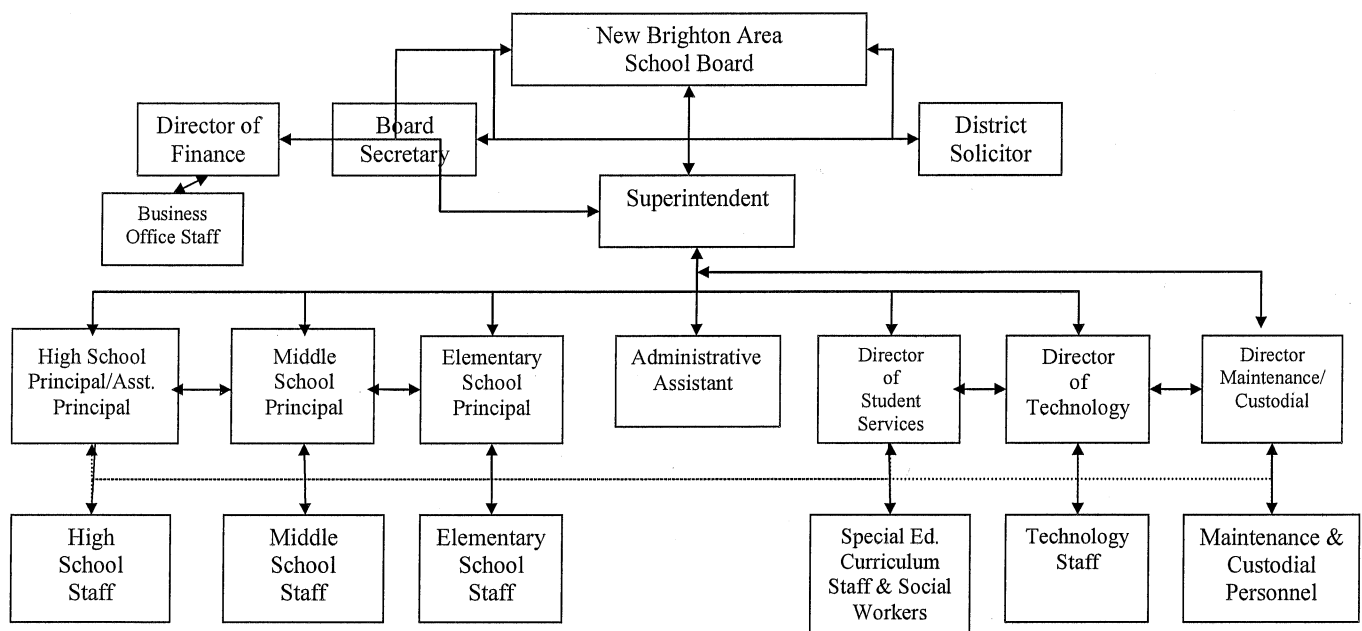
No. 008

SECTION: LOCAL BOARD PROCEDURES

TITLE: ORGANIZATIONAL CHART

ADOPTED: June 21, 1993

REVISED: October 28, 2013



<u>Val Number</u>	<u>Description</u>	<u>Justification</u>
12195	<p>REG: Current Year AFR Beginning Fund Balance must equal Prior Year AFR Ending Fund Balance. Justifications to this error must fully explain the situation that prompted a fund balance restatement. "Auditor Adjustment" is not a sufficient justification.</p> <p>Total Govt Funds, Beg Bal: \$6,093,738.00 PY Ending Bal, Govt Funds: \$6,107,750.00</p>	<p>An entry was made by district to record additional accounts payable. Copy of entry was given to auditor but they neglected to include it when they issued their financial statements in Feb 2019. Omission was not discovered until the draft of the 2019 stmts</p>
12196	<p>REG - Fund 10: Current Year AFR Beginning Fund Balance must equal Prior Year AFR Ending Fund Balance. Justifications to this error must fully explain the situation that prompted a fund balance restatement. "Auditor Adjustment" is not a sufficient justification.</p> <p>REG Fund 10, Beg Fund Bal: \$4,712,810.00 PY Ending Fund Balance: \$4,726,822.00</p>	<p>An entry was made by district to record additional accounts payable. Copy of entry was given to auditor but they neglected to include it when they issued their financial statements in Feb 2019. Omission was not discovered until the draft of the 2019 stmts</p>
40970	<p>There are no expenditures reported in 10-1200-322 representing special programs costs for IU professional educational services. All SDs are expected to report expenditures within this function. Please provide an explanation.</p>	<p>The District relies on the services of AOT, Inc. and onsite specialist. There were no other instructional services for which the IU was utilized</p>
50260	<p>SOIN: No ending long term liability has been reported for Governmental Fund - Compensated Absences. Correct data or verify that the LEA does not offer any type of Compensated Absences for employees.</p>	<p>District does not offer Compensated Absences</p>

Amounts Expressed in Whole Dollars		<u>General Fund</u> <u>(10)</u>	<u>Public Purpose Trust</u> <u>(27)</u>	<u>Other Compt Approved</u> <u>(28)</u>	<u>Athletic / Activity</u> <u>(29)</u>	<u>Capital Reserve (690.</u> <u>1850)</u> <u>(31)</u>
<b>Assets And Deferred Outflows Of Resources</b>						
<b>Assets</b>						
0100	Cash and Cash Equivalents	1,509,420				
0110	Investments	5,916,084				
0120	Taxes Receivable	1,109,456				
0130	Due From Other Funds					
0141	Due From Other Governments	1,948,409				
0142	State Revenue Receivable					
0143	Federal Revenue Receivable					
0145	Other Intergovernmental Revenue Receivable					
0146	Due from Primary Government					
0147	Due from Component Unit					
0150	Other Receivables	48,414				
0170	Inventories					
0180	Prepaid Expenses (Expenditures)	1,250				
0190	Other Current Assets					
<b>Total Assets</b>		<b>\$10,533,033</b>				
0910	Deferred Outflows of Resources					
<b>Total Assets And Deferred Outflows Of Resources</b>		<b>\$10,533,033</b>				

LEA : 127045653      New Brighton Area SD

Printed 1/23/2020 9:57:59 AM

Amounts Expressed in Whole Dollars		<u>Capital Reserve (1431</u> <u>(32)</u>	<u>Other Capital Projects</u> <u>Fund</u> <u>(39)</u>	<u>Debt Service</u> <u>(40)</u>	<u>Permanent</u> <u>(90)</u>	<u>Total Governmental</u> <u>Funds</u>
<b>Assets And Deferred Outflows Of Resources</b>						
<b>Assets</b>						
0100	Cash and Cash Equivalents					1,509,420
0110	Investments	465,525	207,207			6,588,816
0120	Taxes Receivable					1,109,456
0130	Due From Other Funds	862,396	260			862,656
0141	Due From Other Governments					1,948,409
0142	State Revenue Receivable					
0143	Federal Revenue Receivable					
0145	Other Intergovernmental Revenue Receivable					
0146	Due from Primary Government					
0147	Due from Component Unit					
0150	Other Receivables					48,414
0170	Inventories					
0180	Prepaid Expenses (Expenditures)					1,250
0190	Other Current Assets					
<b>Total Assets</b>		<b>\$1,327,921</b>	<b>\$207,467</b>			<b>\$12,068,421</b>
0910	Deferred Outflows of Resources					
<b>Total Assets And Deferred Outflows Of Resources</b>		<b>\$1,327,921</b>	<b>\$207,467</b>			<b>\$12,068,421</b>

Amounts Expressed in Whole Dollars		<u>General Fund</u> <u>(10)</u>	<u>Public Purpose Trust</u> <u>(27)</u>	<u>Other Compt Approved</u> <u>(28)</u>	<u>Athletic / Activity</u> <u>(29)</u>	<u>Capital Reserve (690.</u> <u>1850)</u> <u>(31)</u>
<b>Liabilities And Deferred Inflows Of Resources And Fund Balances</b>						
<b>Liabilities</b>						
0400	Due to Other Funds	969,233				
0411	Due to Other Governments	124,319				
0412	Due to Primary Government					
0413	Due to Component Unit					
0420	Accounts Payable	332,229				
0430	Contracts Payable					
0440	Current Portion of Long-Term Debt					
0450	Short-Term Payables					
0461	Accrued Salaries and Benefits	2,681,574				
0462	Payroll Deductions and Withholding	192,517				
0480	Unearned Revenues	3,996				
0490	Other Current Liabilities					
<b>Total Liabilities</b>		<b>\$4,303,868</b>				
0950	Deferred Inflows of Resources	824,937				
<b>Fund Balances</b>						
0810	Nonspendable Fund Balance	1,250				
0820	Restricted Fund Balance					
0830	Committed Fund Balance					
0840	Assigned Fund Balance	2,392,914				
0850	Unassigned Fund Balance	3,010,064				
<b>Total Fund Balances</b>		<b>\$5,404,228</b>				
<b>Total Liabilities, Deferred Inflows Of Resources And Fund Balances</b>		<b>\$10,533,033</b>				

LEA : 127045653      New Brighton Area SD

Printed 1/23/2020 9:57:59 AM

Amounts Expressed in Whole Dollars		<u>Capital Reserve (1431)</u> <u>(32)</u>	<u>Other Capital Projects</u> <u>Fund</u> <u>(39)</u>	<u>Debt Service</u> <u>(40)</u>	<u>Permanent</u> <u>(90)</u>	<u>Total Governmental</u> <u>Funds</u>
<b>Liabilities And Deferred Inflows Of Resources And Fund Balances</b>						
<b>Liabilities</b>						
0400	Due to Other Funds					969,233
0411	Due to Other Governments					124,319
0412	Due to Primary Government					
0413	Due to Component Unit					
0420	Accounts Payable					332,229
0430	Contracts Payable					
0440	Current Portion of Long-Term Debt					
0450	Short-Term Payables					
0461	Accrued Salaries and Benefits					2,681,574
0462	Payroll Deductions and Withholding					192,517
0480	Unearned Revenues					3,996
0490	Other Current Liabilities					
<b>Total Liabilities</b>						<b>\$4,303,868</b>
0950	Deferred Inflows of Resources					824,937
<b>Fund Balances</b>						
0810	Nonspendable Fund Balance					1,250
0820	Restricted Fund Balance	1,327,921				1,327,921
0830	Committed Fund Balance					
0840	Assigned Fund Balance		207,467			2,600,381
0850	Unassigned Fund Balance					3,010,064
<b>Total Fund Balances</b>		<b>\$1,327,921</b>	<b>\$207,467</b>			<b>\$6,939,616</b>
<b>Total Liabilities, Deferred Inflows Of Resources And Fund Balances</b>		<b>\$1,327,921</b>	<b>\$207,467</b>			<b>\$12,068,421</b>



Amounts Expressed in Whole Dollars		<u>General Fund</u> <u>(10)</u>	<u>Public Purpose Trust</u> <u>(27)</u>	<u>Other Compt Approved</u> <u>(28)</u>	<u>Athletic / Activity</u> <u>(29)</u>	<u>Capital Reserve (690.</u> <u>1850)</u> <u>(31)</u>
<b>Revenues</b>						
6000	Revenue from Local Sources	7,648,304				
7000	Revenue from State Sources	17,036,601				
8000	Revenue from Federal Sources	828,273				
<b>Total Revenues</b>		<b>\$25,513,178</b>				
<b>Expenditures</b>						
1000	Instruction	15,173,300				
2000	Support Services	7,198,256				
3000	Operation of Non-Instructional Services	695,354				
4000	Facilities Acquisition, Construction and Improvement Services	5,237				
5110	Debt Service	1,749,612				
5130	Refund of Prior Year Revenues / Receipts					
<b>Total Expenditures</b>		<b>\$24,821,759</b>				
<b>Excess (Deficiency) Of Revenues Over Expenditures</b>		<b>\$691,419</b>				
<b>Other Financing Sources (Uses)</b>						
9110	Face Value of Bonds Issued					
9120	Proceeds from Refunding of Bonds					
9130	Bond Premiums					
9200	Proceeds from Extended-Term Financing					
9300	Interfund Transfers - IN					
9400	Sale of or Compensation for Loss of Fixed Assets					
9710	Transfers from Component Units					
9720	Transfers from Primary Governments					
9910	Other Financing Sources Not Listed in the 9000 Series					
9990	Insurance Recoveries					
5120	Debt Service – Refunded Bonds					
5150	Bond Discounts					
5200	Interfund Transfers – Out					
5300	Transfers Out to Component Units/Primary Governments					
<b>Total Other Financing Sources (Uses)</b>						

LEA : 127045653      New Brighton Area SD

Printed 1/23/2020 9:58:07 AM

Amounts Expressed in Whole Dollars		<u>Capital Reserve (1431)</u> <u>(32)</u>	<u>Other Capital Projects</u> <u>Fund</u> <u>(39)</u>	<u>Debt Service</u> <u>(40)</u>	<u>Permanent</u> <u>(90)</u>	<u>Total Governmental</u> <u>Funds</u>
<b>Revenues</b>						
6000	Revenue from Local Sources	9,507	22,433			7,680,244
7000	Revenue from State Sources					17,036,601
8000	Revenue from Federal Sources					828,273
<b>Total Revenues</b>		<b>\$9,507</b>	<b>\$22,433</b>			<b>\$25,545,118</b>
<b>Expenditures</b>						
1000	Instruction					15,173,300
2000	Support Services					7,198,256
3000	Operation of Non-Instructional Services					695,354
4000	Facilities Acquisition, Construction and Improvement Services		2,258,268			2,263,505
5110	Debt Service		14,529			1,764,141
5130	Refund of Prior Year Revenues / Receipts					
<b>Total Expenditures</b>			<b>\$2,272,797</b>			<b>\$27,094,556</b>
<b>Excess (Deficiency) Of Revenues Over Expenditures</b>		<b>\$9,507</b>	<b>(\$2,250,364)</b>			<b>(\$1,549,438)</b>
<b>Other Financing Sources (Uses)</b>						
9110	Face Value of Bonds Issued		2,395,317			2,395,317
9120	Proceeds from Refunding of Bonds					
9130	Bond Premiums					
9200	Proceeds from Extended-Term Financing					
9300	Interfund Transfers - IN					
9400	Sale of or Compensation for Loss of Fixed Assets					
9710	Transfers from Component Units					
9720	Transfers from Primary Governments					
9910	Other Financing Sources Not Listed in the 9000 Series					
9990	Insurance Recoveries					
5120	Debt Service – Refunded Bonds					
5150	Bond Discounts					
5200	Interfund Transfers – Out					
5300	Transfers Out to Component Units/Primary Governments					
<b>Total Other Financing Sources (Uses)</b>			<b>\$2,395,317</b>			<b>\$2,395,317</b>

Amounts Expressed in Whole Dollars		<u>General Fund</u> <u>(10)</u>	<u>Public Purpose Trust</u> <u>(27)</u>	<u>Other Compt Approved</u> <u>(28)</u>	<u>Athletic / Activity</u> <u>(29)</u>	<u>Capital Reserve</u> <u>(690.</u> <u>1850)</u> <u>(31)</u>
<b>Special And Extraordinary Items</b>						
9920	Special Items – Gains					
9930	Extraordinary Items – Gains					
5520	Special Items – Losses					
5530	Extraordinary Items – Losses					
<b>Net Change In Fund Balances</b>		<b>\$691,419</b>				
<b>Fund Balance</b>						
0001	Fund Balance - Beginning of Fiscal Year	4,712,810				
<b>Fund Balance - End Of Year</b>		<b>\$5,404,229</b>				

Amounts Expressed in Whole Dollars		<u>Capital Reserve (1431)</u> <u>(32)</u>	<u>Other Capital Projects</u> <u>Fund</u> <u>(39)</u>	<u>Debt Service</u> <u>(40)</u>	<u>Permanent</u> <u>(90)</u>	<u>Total Governmental</u> <u>Funds</u>
<b>Special And Extraordinary Items</b>						
9920	Special Items – Gains					
9930	Extraordinary Items – Gains					
5520	Special Items – Losses					
5530	Extraordinary Items – Losses					
<b>Net Change In Fund Balances</b>		<b>\$9,507</b>	<b>\$144,953</b>			<b>\$845,879</b>
<b>Fund Balance</b>						
0001	Fund Balance - Beginning of Fiscal Year	1,318,414	62,514			6,093,738
<b>Fund Balance - End Of Year</b>		<b>\$1,327,921</b>	<b>\$207,467</b>			<b>\$6,939,617</b>

LEA : 127045653     New Brighton Area SD

Printed 1/23/2020 9:58:10 AM

Amounts Expressed in Whole Dollars		<u>Food Service</u> <u>(51)</u>	<u>Child Care</u> <u>Operations</u> <u>(52)</u>	<u>Other Enterprise</u> <u>(58)</u>	<u>TOTAL</u>	<u>Internal Service</u> <u>(60)</u>
<b>Assets And Deferred Outflows Of Resources</b>						
<b>Current Assets</b>						
0100	Cash and Cash Equivalents	116,867			116,867	
0110	Investments					
0130	Due From Other Funds	106,577			106,577	
0141	Due From Other Governments	95,612			95,612	
0142	State Revenue Receivable					
0143	Federal Revenue Receivable					
0146	Due from Primary Government					
0147	Due from Component Unit					
0150	Other Receivables	20,018			20,018	
0170	Inventories	10,465			10,465	
0180	Prepaid Expenses (Expenditures)					
0190	Other Current Assets					
<b>Total Current Assets</b>		<b>\$349,539</b>			<b>\$349,539</b>	
<b>Noncurrent Assets</b>						
0211	Land					
0212	Site Improvements (Net)					
0220	Buildings and Building Improvements (Net)					
0230	Machinery, Equipment and Furniture (Net)	30,035			30,035	
0250	Construction in Progress					
0260	Long Term Prepayments					
0290	Other Noncurrent Assets					
<b>Total Noncurrent Assets</b>		<b>\$30,035</b>			<b>\$30,035</b>	
0910	Deferred Outflows of Resources					
<b>Total Assets And Deferred Outflows Of Resources</b>		<b>\$379,574</b>			<b>\$379,574</b>	

Amounts Expressed in Whole Dollars	<u>Food Service</u> <u>(51)</u>	<u>Child Care</u> <u>Operations</u> <u>(52)</u>	<u>Other Enterprise</u> <u>(58)</u>	<u>TOTAL</u>	<u>Internal Service</u> <u>(60)</u>
<b>Liabilities And Deferred Inflows Of Resources And Net Position</b>					
<b>Current Liabilities</b>					
0400 Due to Other Funds					
0411 Due to Other Governments					
0413 Due to Component Unit					
0420 Accounts Payable	30,351			30,351	
0430 Contracts Payable					
0440 Current Portion of Long-Term Debt					
0450 Short-Term Payables					
0461 Accrued Salaries and Benefits					
0462 Payroll Deductions and Withholding					
0480 Unearned Revenues	2,519			2,519	
0490 Other Current Liabilities					
<b>Total Current Liabilities</b>	<b>\$32,870</b>			<b>\$32,870</b>	
<b>Noncurrent Liabilities</b>					
0510 Bonds Payable					
0520 Extended-Term Financing Agreements Payable					
0530 Lease-Purchase Obligations					
0540 Accumulated Compensated Absences					
0550 Authority Lease Obligations					
0560 Other Post-Employment Benefits (OPEB)					
0570 Net Pension Liability					
0599 Other Noncurrent Liabilities					
<b>Total Noncurrent Liabilities</b>					
<b>Total Liabilities</b>	<b>\$32,870</b>			<b>\$32,870</b>	
0950 Deferred Inflows of Resources					
<b>Net Position</b>					
0791 Net Investment in Capital Assets	30,035			30,035	
0008 Restricted Net Position (0792 – 0798)					
0799 Unrestricted Net Position	316,669			316,669	
<b>Total Net Position</b>	<b>\$346,704</b>			<b>\$346,704</b>	
<b>Total Liabilities And Deferred Inflows Of Resources And Net Position</b>	<b>\$379,574</b>			<b>\$379,574</b>	

Amounts Expressed in Whole Dollars	Food Service (51)	Child Care Operations (52)	Other Enterprise (58)	TOTAL	Internal Service (60)
<b>Operating Revenues</b>					
6600 Food Service Revenue	235,940			235,940	
0071 Charges for Services					
0072 Other Operating Revenue					
<b>Total Operating Revenues</b>	<b>\$235,940</b>			<b>\$235,940</b>	
<b>Operating Expenses</b>					
100 Personnel Services – Salaries					
200 Personnel Services – Employee Benefits					
300 Purchased Professional and Technical Services					
400 Purchased Property Services					
500 Other Purchased Services	878,605			878,605	
600 Supplies	69,422			69,422	
740 Depreciation	5,515			5,515	
810 Dues and Fees					
890 Miscellaneous Expenditures	3,071			3,071	
<b>Total Operating Expenses</b>	<b>\$956,613</b>			<b>\$956,613</b>	
<b>Operating Income (Loss)</b>	<b>(\$720,673)</b>			<b>(\$720,673)</b>	
<b>Non Operating Revenues (Expenses)</b>					
6500 Earnings on Investments					
6920 Contributions and Donations from Private Sources					
6930 Gains or Losses on Sale of Fixed Assets					
6991 Refunds of a Prior Year Expenditure					
7000 Revenue from State Sources	49,849			49,849	
8000 Revenue from Federal Sources	787,655			787,655	
9990 Insurance Recoveries					
820 Claims and Judgments Against the LEA					
830 Interest					
<b>TOTAL Non Operating Revenues (Expenses)</b>	<b>\$837,504</b>			<b>\$837,504</b>	
<b>Income (Loss) Before Contributions And Transfers</b>	<b>\$116,831</b>			<b>\$116,831</b>	

Amounts Expressed in Whole Dollars	<u>Food Service</u> <u>(51)</u>	<u>Child Care Operations</u> <u>(52)</u>	<u>Other Enterprise</u> <u>(58)</u>	<u>TOTAL</u>	<u>Internal Service</u> <u>(60)</u>
<b>Contributions, Transfers, and Special and Extraordinary Items</b>					
5200 Interfund Transfers – Out					
5300 Transfers Out to Component Units/Primary Governments					
5520 Special Items – Losses					
5530 Extraordinary Items – Losses					
9300 Interfund Transfers - IN					
9500 Capital Contributions					
9700 Transfers IN From Component Units/Primary Governments					
9920 Special Items – Gains					
9930 Extraordinary Items – Gains					
<b>Change In Net Position</b>	<b>\$116,831</b>			<b>\$116,831</b>	
0002 Net Position - Beginning of Fiscal Year	229,873			229,873	
0003 Accounting Changes / Residual Equity Transfers					
<b>Net Position - End Of Year</b>	<b>\$346,704</b>			<b>\$346,704</b>	



LEA : 127045653      New Brighton Area SD

Printed 1/23/2020 9:58:22 AM

Amounts Expressed in Whole Dollars		<u>Food Service</u> <u>(51)</u>	<u>Child Care Operations</u> <u>(52)</u>	<u>Other Enterprise</u> <u>(58)</u>	<u>TOTAL</u>	<u>Internal Service(60)</u>
<b>Cash Flows From Operating Activities</b>						
0011	Cash Receipts From Users	221,145			221,145	
0012	Cash Receipts From Assessments Made to Other Funds					
0013	Cash Receipts From Earnings on Investments					
0014	Cash Receipts From Other Operating Revenue					
0015	Cash Payments To Employees For Services					
0016	Cash Payments For Insurance Claims					
0017	Cash Payments To Suppliers For Goods and Services	1,047,883			1,047,883	
0018	Cash Payments For Other Operating Expenses					
<b>Net Cash Provided By (Used For) Operating Activities</b>		<b>(\$826,738)</b>			<b>(\$826,738)</b>	
<b>Cash Flows From Non-Capital Financing Activities</b>						
0021	Receipts From Local Sources - 6000					
0022	Receipts From State Sources - 7000	49,251			49,251	
0023	Receipts From Federal Sources -8000	716,745			716,745	
0024	Notes and Loans Received (Repaid)					
0025	Interest Paid on Notes/Loans - 5100-830					
0026	Operating Transfers In (Out)/Residual Equity Trans					
0027	Operating Transfers In (Out) Primary Government / Comp Unit					
0028	Receipts From Refund of Prior Year Expenditures - 6991					
0029	Special and Extraordinary Gains (losses)					
0030	Receipts from Insurance Recoveries -9990					
<b>Net Cash Prov By (Used for) Non-Capital Financing Activities</b>		<b>\$765,996</b>			<b>\$765,996</b>	
<b>Cash Flows From Capital and Related Financing Activities</b>						
0031	Payments For Fac Acq, Const, and Imp - 4000					
0032	Gain / (Loss) on Sale of Fixed Assets - 6930	(17,536)			(17,536)	
0033	Proceeds From Extended Term Financing - 9200					
0034	Principal Paid on Financing Agreements					
0035	Interest Paid on Financing Agreements - 5100-830					
0036	(Inc) Dec in Contributed Capital					
<b>Net Cash Prov By (Used for) Capital and Related Financing Activities</b>		<b>(\$17,536)</b>			<b>(\$17,536)</b>	
<b>Cash Flows From Investing Activities</b>						
0041	Earnings on Investments - 6500					
0042	Purchase of Inv Securities / Deposits to Inv Pools					
0043	Receipts From Investment Pool Withdrawals					
0044	Proceeds from Sale and Maturity of Inv Securities					

LEA : 127045653      New Brighton Area SD

Printed 1/23/2020 9:58:22 AM

0045   Loans Received (Paid)

**Net Cash Prov By (Used for) Investing Activities**

LEA : 127045653      New Brighton Area SD

Printed 1/23/2020 9:58:22 AM

	Food Service (51)	Child Care Operations (52)	Other Enterprise (58)	TOTAL	Internal Service (60)
<b>Net Increase (Decrease) in Cash Flows</b>	(78,278)			(78,278)	
0004 Cash and Cash Equivalents Beginning of Year	195,145			195,145	
<b>Cash and Cash Equivalents at Year End</b>	<b>\$116,867</b>			<b>\$116,867</b>	
<b>Reconciliation of Operating Income (Loss) To Net Cash Provided by (Used For) Operating Activities</b>					
0005 Operating Income (Loss) per REP	(720,673)			(720,673)	
<b>Adjustments</b>					
0051 Depreciation and Net Amortization	5,515			5,515	
0052 Provision for Uncollectible Accounts					
0053 Other Adjustments	61,103			61,103	
<b>Effect of Changes in Assets, Liabilities, Deferred Outflows and Deferred Inflows</b>					
0054 (Inc) Dec In Accounts Receivable (0120-0150)	(14,194)			(14,194)	
0055 Advances to Other Funds (0160)	(152,808)			(152,808)	
0056 (Inc) Dec in Inventories (0170)	4,746			4,746	
0057 (Inc) Dec in Prepaid Expenses (0180)					
0058 (Inc) Dec in Other Current or Noncurrent Assets					
0064 Deferred Outflows (0910)					
0059 Inc (Dec) in Accounts Payable (0400-0450)	(9,826)			(9,826)	
0060 Inc (Dec) in Accrued Salaries/Benefits (0461)					
0065 Inc (Dec) in Net Pension Liabilities (0570)					
0066 Inc (Dec) in Other Postemp Benefit Oblig (0560)					
0061 Inc (Dec) in Payroll Deductions/Withholding (0462)					
0062 Inc (Dec) in Unearned Revenue (0480)	(601)			(601)	
0063 Inc (Dec) in Other Current or Noncurrent Liabilities					
0067 Deferred Inflows (0950)					
<b>Total Adjustments</b>	<b>(\$106,065)</b>			<b>(\$106,065)</b>	
<b>Cash Provided By (Used for) Total</b>	<b>(\$826,738)</b>			<b>(\$826,738)</b>	

COMBINED STATEMENT OF CASH FLOWS  
SCHEDULE OF NONCASH INVESTING, CAPITAL, AND FINANCING ACTIVITIES

Explanation of Transaction and Balance Sheet Effect	Amount
Total	

LEA : 127045653     New Brighton Area SD

Printed 1/23/2020 9:58:24 AM

Amounts Expressed in Whole Dollars	<u>Private Purpose Trust</u> <u>(71)</u>	<u>Investment Trust</u> <u>(72)</u>	<u>Pension Trust</u> <u>(73)</u>	<u>Activity</u> <u>(81)</u>
<b>Assets And Deferred Outflows Of Resources</b>				
<b>Assets</b>				
0100 Cash and Cash Equivalents				81,299
0110 Investments				
0130 Due From Other Funds				
0147 Due from Component Unit				
0150 Other Receivables				56
0170 Inventories				
0180 Prepaid Expenses (Expenditures)				
0190 Other Current Assets				
0220 Buildings and Building Improvements (Net)				
0230 Machinery, Equipment and Furniture (Net)				
<b>Total Assets</b>				<b>\$81,355</b>
0910 Deferred Outflows of Resources				
<b>Total Assets And Deferred Outflows Of Resources</b>				<b>\$81,355</b>

LEA : 127045653     New Brighton Area SD

Printed 1/23/2020 9:58:24 AM

Amounts Expressed in Whole Dollars

	<u>Other Agency</u> <u>(89)</u>	<u>Discrete Component Units</u> <u>(98)</u>	<u>Discrete Component Units</u> <u>(99)</u>	<u>Total Fiduciary Funds</u>
<b>Assets And Deferred Outflows Of Resources</b>				
<b>Assets</b>				
0100 Cash and Cash Equivalents				81,299
0110 Investments				
0130 Due From Other Funds				
0147 Due from Component Unit				
0150 Other Receivables				56
0170 Inventories				
0180 Prepaid Expenses (Expenditures)				
0190 Other Current Assets				
0220 Buildings and Building Improvements (Net)				
0230 Machinery, Equipment and Furniture (Net)				
<b>Total Assets</b>				<b>\$81,355</b>
0910 Deferred Outflows of Resources				
<b>Total Assets And Deferred Outflows Of Resources</b>				<b>\$81,355</b>

LEA : 127045653     New Brighton Area SD

Printed 1/23/2020 9:58:24 AM

Amounts Expressed in Whole Dollars	<u>Private Purpose Trust</u> <u>(71)</u>	<u>Investment Trust</u> <u>(72)</u>	<u>Pension Trust</u> <u>(73)</u>	<u>Activity</u> <u>(81)</u>
<b>Liabilities, Deferred Inflows Of Resources And Net Position</b>				
<b>Liabilities</b>				
0400 Due to Other Funds				
0411 Due to Other Governments				
0412 Due to Primary Government				
0413 Due to Component Unit				
0420 Accounts Payable				
0430 Contracts Payable				
0450 Short-Term Payables				
0461 Accrued Salaries and Benefits				
0462 Payroll Deductions and Withholding				
0480 Unearned Revenues				
0490 Other Current Liabilities				81,355
<b>Total Liabilities</b>				<b>\$81,355</b>
0950 Deferred Inflows of Resources				
<b>Net Position</b>				
0791 Net Investment in Capital Assets				
0009 Restricted Net Position (0792 – 0798)				
0799 Unrestricted Net Position				
<b>Total Net Position</b>				
<b>Total Liabilities, Deferred Inflows Of Resources And Net Position</b>				<b>\$81,355</b>

LEA : 127045653     New Brighton Area SD

Printed 1/23/2020 9:58:24 AM

Amounts Expressed in Whole Dollars

<u>Other Agency</u> <u>(89)</u>	<u>Discrete Component Units</u> <u>(98)</u>	<u>Discrete Component Units</u> <u>(99)</u>	<u>Total Fiduciary Funds</u>
------------------------------------	--	--	------------------------------

Liabilities, Deferred Inflows Of Resources And Net Position

Liabilities

0400	Due to Other Funds			
0411	Due to Other Governments			
0412	Due to Primary Government			
0413	Due to Component Unit			
0420	Accounts Payable			
0430	Contracts Payable			
0450	Short-Term Payables			
0461	Accrued Salaries and Benefits			
0462	Payroll Deductions and Withholding			
0480	Unearned Revenues			
0490	Other Current Liabilities			81,355
Total Liabilities				\$81,355

0950 Deferred Inflows of Resources

Net Position

0791	Net Investment in Capital Assets			
0009	Restricted Net Position (0792 – 0798)			
0799	Unrestricted Net Position			
Total Net Position				
Total Liabilities, Deferred Inflows Of Resources And Net Position				\$81,355



	Revenue Reported In Current Year	Current Year Tax Accrual	Prior Year Tax Accrual	Taxes Collected In Current Year
<b>Revenue from Local Sources</b>				
6111 Current Real Estate Taxes	5,235,601.52			5,235,601.52
6113 Public Utility Realty Taxes	6,532.20			6,532.20
6114 Payments in Lieu of Current Taxes - State / Local	19,424.95			19,424.95
6120 Current Per Capita Taxes, Section 679	23,924.26			23,924.26
6141 Current Act 511 Per Capita Taxes	23,924.10			23,924.10
6143 Current Act 511 Local Services Taxes	11,779.28			11,779.28
6151 Current Act 511 Earned Income Taxes	1,026,903.77			1,026,903.77
6153 Current Act 511 Real Estate Transfer Taxes	81,946.34			81,946.34
6155 Current Act 511 Business Privilege Taxes	94,092.28			94,092.28
6411 Delinquent Real Estate Taxes	435,002.69			435,002.69
6420 Delinquent Per Capita Taxes, Section 679	12,377.53			12,377.53
6500 Earnings on Investments	139,895.52			
6829 State Revenue Received from Other Sources	5,898.00			
6832 Federal IDEA Revenue Received as Pass Through	189,267.00			
6941 Regular Day School Tuition	2,550.16			
6942 Summer School Tuition	(4,156.39)			
6961 Transportation Services Provided Other Pennsylvania LEAs	5,198.35			
6962 Other Services Provided Other Pennsylvania LEAs	381.14			
6980 Revenue from Community Services Activities	82,199.73			
6991 Refunds of a Prior Year Expenditure	1,885.42			
6992 Energy Efficiency Revenues and Incentives	188,074.04			
6999 Other Revenues Not Specified Above	65,602.01			
<b>TOTAL Revenue from Local Sources</b>	<b>\$7,648,303.90</b>			<b>\$6,971,508.92</b>

	Revenue Reported In Current Year			
<b>Revenue from State Sources</b>				
7110 Basic Education Funding	10,676,777.35			
7160 Tuition for Orphans Subsidy	13,055.39			
7271 Special Education funds for School-Aged Pupils	1,367,254.18			
7311 Pupil Transportation Subsidy	620,801.43			
7312 Nonpublic and Charter School Pupil Transportation Subsidy	21,945.00			
7320 Rental and Sinking Fund Payments / Building Reimbursement Subsidy	243,094.77			
7330 Health Services (Medical, Dental, Nurse, Act 25)	25,924.43			
7340 State Property Tax Reduction Allocation	671,548.91			
7361 School Safety and Security Grants	220,320.00			
7505 Ready to Learn Block Grant	331,589.00			
7810 State Share of Social Security and Medicare Taxes	523,134.48			
7820 State Share of Retirement Contributions	2,321,156.11			
<b>TOTAL Revenue from State Sources</b>	<b>\$17,036,601.05</b>			

	Revenue Reported In Current Year			
<b><u>Revenue from Federal Sources</u></b>				
8514 NCLB, Title I - Improving the Academic Achievement of the Disadvantaged	499,617.78			
8515 NCLB, Title II - Preparing, Training and Recruiting High Quality Teachers and Principals	62,056.33			
8517 NCLB, Title IV - 21St Century Schools	8,472.17			
8810 School-Based Access Medicaid Reimbursement Program (SBAP) Reimbursements (Access)	235,413.06			
8820 Medical Assistance Reimbursement for Administrative Claiming (Quarterly) Program	22,713.21			
<b>TOTAL Revenue from Federal Sources</b>	<b>\$828,272.55</b>			
<b>TOTAL FROM ALL SOURCES</b>	<b>\$25,513,177.50</b>			<b>\$6,971,508.92</b>

Revenue from Local Sources	7,648,303.90
Revenue from State Sources	17,036,601.05
Revenue from Federal Sources	828,272.55
Other Financing Sources	
<b>TOTAL FROM ALL SOURCES</b>	<b>\$25,513,177.50</b>

LEA : 127045653      New Brighton Area SD

Printed 1/23/2020 9:58:35 AM

<b>General Fund (10)</b>	
<b>1000 Instruction</b>	<b><u>Total</u></b>
<b>100 <u>Personnel Services – Salaries</u></b>	
100 Personnel Services – Salaries	7,464,409.72
<b>Total Personnel Services – Salaries</b>	<b>\$7,464,409.72</b>
<b>200 <u>Personnel Services – Employee Benefits</u></b>	
210 Group Insurance – Contracted Provider	1,565,933.72
220 Social Security Contributions	552,765.70
230 PSERS Retirement Contributions	2,448,161.11
250 Unemployment Compensation	(5,108.20)
260 Workers' Compensation	16,564.43
<b>Total Personnel Services – Employee Benefits</b>	<b>\$4,578,316.76</b>
<b>300 <u>Purchased Professional and Technical Services</u></b>	
322 Professional Educational Services – Ius	2,000.00
329 Professional Educational Services – Other	219,574.74
330 Other Professional Services	197,532.16
390 Other Purchased Professional and Technical Services	4,310.06
<b>Total Purchased Professional and Technical Services</b>	<b>\$423,416.96</b>
<b>400 <u>Purchased Property Services</u></b>	
430 Repairs and Maintenance Services	2,430.17
440 Rentals	34,364.19
<b>Total Purchased Property Services</b>	<b>\$36,794.36</b>
<b>500 <u>Other Purchased Services</u></b>	
530 Communications	12,794.20
561 Tuition To Other School Districts Within the State	76,121.92
562 Tuition To Pennsylvania Charter Schools	1,117,093.15
563 Tuition To Nonpublic Schools	206,055.93
564 Tuition To Career and Technology Centers	486,507.57
567 Tuition To Approved Private Schools (APS) and PA Chartered Schools for the Deaf and Blind	178,759.75
568 Tuition To Private Residential Rehabilitative Institutions (PRRI) [In-State] and Detention Centers	60,739.23
580 Travel	6,389.61
594 IU Payment By Withholding for Institutionalized Children's Programs – Special Classes	1,174.45
596 Direct Payments To Intermediate Units	233,430.70
<b>Total Other Purchased Services</b>	<b>\$2,379,066.51</b>
<b>600 <u>Supplies</u></b>	
610 General Supplies	238,569.54
630 Food	15,259.10
640 Books and Periodicals	8,334.62
<b>Total Supplies</b>	<b>\$262,163.26</b>
<b>700 <u>Property</u></b>	
758 Capitalized Technology Software - Original	17,640.00
<b>Total Property</b>	<b>\$17,640.00</b>
<b>800 <u>Other Objects</u></b>	

LEA : 127045653     New Brighton Area SD

Printed 1/23/2020 9:58:35 AM

General Fund (10)		
1000 Instruction		<u>Total</u>
800 <u>Other Objects</u>		
810 Dues and Fees		11,492.23
Total Other Objects		\$11,492.23
Total 1000 Instruction		\$15,173,299.80

LEA : 127045653     New Brighton Area SD

Printed 1/23/2020 9:58:35 AM

<b>General Fund (10)</b>				
<b>1100 Regular Programs – Elementary / Secondary</b>	<b><u>Elementary</u></b>	<b><u>Secondary</u></b>	<b><u>Federal</u></b>	<b><u>Total</u></b>
<b>100 <u>Personnel Services – Salaries</u></b>				
100 Personnel Services – Salaries	2,702,270.57	2,711,220.48	349,468.76	5,762,959.81
<b>Total Personnel Services – Salaries</b>	<b>\$2,702,270.57</b>	<b>\$2,711,220.48</b>	<b>\$349,468.76</b>	<b>\$5,762,959.81</b>
<b>200 <u>Personnel Services – Employee Benefits</u></b>				
210 Group Insurance – Contracted Provider	589,471.95	515,062.07	66,477.39	1,171,011.41
220 Social Security Contributions	200,820.15	201,112.71	26,343.12	428,275.98
230 PSERS Retirement Contributions	879,699.89	880,830.82	116,777.38	1,877,308.09
250 Unemployment Compensation	(4,487.00)	(4,437.91)	400.02	(8,524.89)
260 Workers' Compensation	1,580.31	1,653.24	2,270.71	5,504.26
<b>Total Personnel Services – Employee Benefits</b>	<b>\$1,667,085.30</b>	<b>\$1,594,220.93</b>	<b>\$212,268.62</b>	<b>\$3,473,574.85</b>
<b>300 <u>Purchased Professional and Technical Services</u></b>				
322 Professional Educational Services – lus	1,000.00	1,000.00		2,000.00
329 Professional Educational Services – Other	112,860.00	89,432.60		202,292.60
390 Other Purchased Professional and Technical Services	206.25	1,400.75	2,478.06	4,085.06
<b>Total Purchased Professional and Technical Services</b>	<b>\$114,066.25</b>	<b>\$91,833.35</b>	<b>\$2,478.06</b>	<b>\$208,377.66</b>
<b>400 <u>Purchased Property Services</u></b>				
430 Repairs and Maintenance Services	95.60	928.60		1,024.20
440 Rentals	15,619.97	18,744.22		34,364.19
<b>Total Purchased Property Services</b>	<b>\$15,715.57</b>	<b>\$19,672.82</b>		<b>\$35,388.39</b>
<b>500 <u>Other Purchased Services</u></b>				
530 Communications	6,397.10	6,397.10		12,794.20
562 Tuition To Pennsylvania Charter Schools	386,784.66	389,317.08		776,101.74
568 Tuition To Private Residential Rehabilitative Institutions (PRRI) [In-State] and Detention Centers	10.02	10.01		20.03
580 Travel	35.91	253.48	844.16	1,133.55
<b>Total Other Purchased Services</b>	<b>\$393,227.69</b>	<b>\$395,977.67</b>	<b>\$844.16</b>	<b>\$790,049.52</b>
<b>600 <u>Supplies</u></b>				
610 General Supplies	87,023.34	113,284.93	4,943.55	205,251.82
630 Food	7,629.55	7,629.55		15,259.10
640 Books and Periodicals	7,615.51			7,615.51
<b>Total Supplies</b>	<b>\$102,268.40</b>	<b>\$120,914.48</b>	<b>\$4,943.55</b>	<b>\$228,126.43</b>
<b>700 <u>Property</u></b>				
758 Capitalized Technology Software - Original	8,820.00	8,820.00		17,640.00
<b>Total Property</b>	<b>\$8,820.00</b>	<b>\$8,820.00</b>		<b>\$17,640.00</b>
<b>Total 1100 Regular Programs – Elementary / Secondary</b>	<b>\$5,003,453.78</b>	<b>\$4,942,659.73</b>	<b>\$570,003.15</b>	<b>\$10,516,116.66</b>

LEA : 127045653      New Brighton Area SD

Printed 1/23/2020 9:58:35 AM

General Fund (10)				
1110 Regular Programs	<u>Elementary</u>	<u>Secondary</u>	<u>Federal</u>	<u>Total</u>
100 <u>Personnel Services – Salaries</u>				
100 Personnel Services – Salaries	2,702,270.57	2,711,220.48		5,413,491.05
<b>Total Personnel Services – Salaries</b>	<b>\$2,702,270.57</b>	<b>\$2,711,220.48</b>		<b>\$5,413,491.05</b>
200 <u>Personnel Services – Employee Benefits</u>				
210 Group Insurance – Contracted Provider	589,471.95	515,062.07		1,104,534.02
220 Social Security Contributions	200,820.15	201,112.71		401,932.86
230 PSERS Retirement Contributions	879,699.89	880,830.82		1,760,530.71
250 Unemployment Compensation	(4,487.00)	(4,437.91)		(8,924.91)
260 Workers' Compensation	1,580.31	1,653.24		3,233.55
<b>Total Personnel Services – Employee Benefits</b>	<b>\$1,667,085.30</b>	<b>\$1,594,220.93</b>		<b>\$3,261,306.23</b>
300 <u>Purchased Professional and Technical Services</u>				
322 Professional Educational Services – lus	1,000.00	1,000.00		2,000.00
329 Professional Educational Services – Other	112,860.00	89,432.60		202,292.60
390 Other Purchased Professional and Technical Services	206.25	1,400.75		1,607.00
<b>Total Purchased Professional and Technical Services</b>	<b>\$114,066.25</b>	<b>\$91,833.35</b>		<b>\$205,899.60</b>
400 <u>Purchased Property Services</u>				
430 Repairs and Maintenance Services	95.60	928.60		1,024.20
440 Rentals	15,619.97	18,744.22		34,364.19
<b>Total Purchased Property Services</b>	<b>\$15,715.57</b>	<b>\$19,672.82</b>		<b>\$35,388.39</b>
500 <u>Other Purchased Services</u>				
530 Communications	6,397.10	6,397.10		12,794.20
562 Tuition To Pennsylvania Charter Schools	386,784.66	389,317.08		776,101.74
568 Tuition To Private Residential Rehabilitative Institutions (PRRI) [In-State] and Detention Centers	10.02	10.01		20.03
580 Travel	35.91	253.48		289.39
<b>Total Other Purchased Services</b>	<b>\$393,227.69</b>	<b>\$395,977.67</b>		<b>\$789,205.36</b>
600 <u>Supplies</u>				
610 General Supplies	87,023.34	113,284.93		200,308.27
630 Food	7,629.55	7,629.55		15,259.10
640 Books and Periodicals	7,615.51			7,615.51
<b>Total Supplies</b>	<b>\$102,268.40</b>	<b>\$120,914.48</b>		<b>\$223,182.88</b>
700 <u>Property</u>				
758 Capitalized Technology Software - Original	8,820.00	8,820.00		17,640.00
<b>Total Property</b>	<b>\$8,820.00</b>	<b>\$8,820.00</b>		<b>\$17,640.00</b>
<b>Total 1110 Regular Programs</b>	<b>\$5,003,453.78</b>	<b>\$4,942,659.73</b>		<b>\$9,946,113.51</b>



LEA : 127045653     New Brighton Area SD

Printed 1/23/2020 9:58:35 AM

General Fund (10)

1140 Early Intervening Services	<u>Elementary</u>	<u>Secondary</u>	<u>Federal</u>	<u>Total</u>
100 <u>Personnel Services – Salaries</u>				
100 Personnel Services – Salaries			3,188.76	3,188.76
<b>Total Personnel Services – Salaries</b>			<b>\$3,188.76</b>	<b>\$3,188.76</b>
200 <u>Personnel Services – Employee Benefits</u>				
220 Social Security Contributions			230.66	230.66
230 PSERS Retirement Contributions			1,015.81	1,015.81
260 Workers’ Compensation			19.77	19.77
<b>Total Personnel Services – Employee Benefits</b>			<b>\$1,266.24</b>	<b>\$1,266.24</b>
<b>Total 1140 Early Intervening Services</b>			<b>\$4,455.00</b>	<b>\$4,455.00</b>

LEA : 127045653      New Brighton Area SD

Printed 1/23/2020 9:58:35 AM

General Fund (10)

1190 Federally-Funded Regular Programs

	<u>Elementary</u>	<u>Secondary</u>	<u>Federal</u>	<u>Total</u>
<b>100 <u>Personnel Services – Salaries</u></b>				
100 Personnel Services – Salaries			346,280.00	346,280.00
<b>Total Personnel Services – Salaries</b>			<b>\$346,280.00</b>	<b>\$346,280.00</b>
<b>200 <u>Personnel Services – Employee Benefits</u></b>				
210 Group Insurance – Contracted Provider			66,477.39	66,477.39
220 Social Security Contributions			26,112.46	26,112.46
230 PSERS Retirement Contributions			115,761.57	115,761.57
250 Unemployment Compensation			400.02	400.02
260 Workers' Compensation			2,250.94	2,250.94
<b>Total Personnel Services – Employee Benefits</b>			<b>\$211,002.38</b>	<b>\$211,002.38</b>
<b>300 <u>Purchased Professional and Technical Services</u></b>				
390 Other Purchased Professional and Technical Services			2,478.06	2,478.06
<b>Total Purchased Professional and Technical Services</b>			<b>\$2,478.06</b>	<b>\$2,478.06</b>
<b>500 <u>Other Purchased Services</u></b>				
580 Travel			844.16	844.16
<b>Total Other Purchased Services</b>			<b>\$844.16</b>	<b>\$844.16</b>
<b>600 <u>Supplies</u></b>				
610 General Supplies			4,943.55	4,943.55
<b>Total Supplies</b>			<b>\$4,943.55</b>	<b>\$4,943.55</b>
<b>Total 1190 Federally-Funded Regular Programs</b>			<b>\$565,548.15</b>	<b>\$565,548.15</b>

LEA : 127045653     New Brighton Area SD

Printed 1/23/2020 9:58:35 AM

<b>General Fund (10)</b>				
<b>1200 Special Programs – Elementary / Secondary</b>	<b><u>Elementary</u></b>	<b><u>Secondary</u></b>	<b><u>Federal</u></b>	<b><u>Total</u></b>
<b>100 <u>Personnel Services – Salaries</u></b>				
100 Personnel Services – Salaries	673,547.63	528,992.38		1,202,540.01
<b>Total Personnel Services – Salaries</b>	<b>\$673,547.63</b>	<b>\$528,992.38</b>		<b>\$1,202,540.01</b>
<b>200 <u>Personnel Services – Employee Benefits</u></b>				
210 Group Insurance – Contracted Provider	160,299.25	140,245.70		300,544.95
220 Social Security Contributions	50,525.73	39,560.74		90,086.47
230 PSERS Retirement Contributions	224,276.98	176,478.50		400,755.48
250 Unemployment Compensation	1,722.32	1,085.88		2,808.20
260 Workers' Compensation	4,378.73	3,438.67		7,817.40
<b>Total Personnel Services – Employee Benefits</b>	<b>\$441,203.01</b>	<b>\$360,809.49</b>		<b>\$802,012.50</b>
<b>300 <u>Purchased Professional and Technical Services</u></b>				
329 Professional Educational Services – Other	8,992.79	8,289.35		17,282.14
330 Other Professional Services	618.75	618.75	174,250.47	175,487.97
390 Other Purchased Professional and Technical Services			225.00	225.00
<b>Total Purchased Professional and Technical Services</b>	<b>\$9,611.54</b>	<b>\$8,908.10</b>	<b>\$174,475.47</b>	<b>\$192,995.11</b>
<b>500 <u>Other Purchased Services</u></b>				
561 Tuition To Other School Districts Within the State	57,931.42			57,931.42
562 Tuition To Pennsylvania Charter Schools	170,495.71	170,495.70		340,991.41
563 Tuition To Nonpublic Schools			206,055.93	206,055.93
567 Tuition To Approved Private Schools (APS) and PA Chartered Schools for the Deaf and Blind	89,379.88	89,379.87		178,759.75
580 Travel	2,628.03	2,628.03		5,256.06
594 IU Payment By Withholding for Institutionalized Children's Programs – Special Classes	1,174.45			1,174.45
596 Direct Payments To Intermediate Units	117,302.58	116,128.12		233,430.70
<b>Total Other Purchased Services</b>	<b>\$438,912.07</b>	<b>\$378,631.72</b>	<b>\$206,055.93</b>	<b>\$1,023,599.72</b>
<b>600 <u>Supplies</u></b>				
610 General Supplies	4,912.94	3,819.07	1,901.88	10,633.89
640 Books and Periodicals	490.73	228.38		719.11
<b>Total Supplies</b>	<b>\$5,403.67</b>	<b>\$4,047.45</b>	<b>\$1,901.88</b>	<b>\$11,353.00</b>
<b>800 <u>Other Objects</u></b>				
810 Dues and Fees	4,841.60	6,650.63		11,492.23
<b>Total Other Objects</b>	<b>\$4,841.60</b>	<b>\$6,650.63</b>		<b>\$11,492.23</b>
<b>Total 1200 Special Programs – Elementary / Secondary</b>	<b>\$1,573,519.52</b>	<b>\$1,288,039.77</b>	<b>\$382,433.28</b>	<b>\$3,243,992.57</b>

LEA : 127045653     New Brighton Area SD

Printed 1/23/2020 9:58:35 AM

<b>General Fund (10)</b>				
<b>1240 Academic Support</b>	<u>Elementary</u>	<u>Secondary</u>	<u>Federal</u>	<u>Total</u>
<b>100 <u>Personnel Services – Salaries</u></b>				
100 Personnel Services – Salaries	673,547.63	528,992.38		1,202,540.01
<b>Total Personnel Services – Salaries</b>	<b>\$673,547.63</b>	<b>\$528,992.38</b>		<b>\$1,202,540.01</b>
<b>200 <u>Personnel Services – Employee Benefits</u></b>				
210 Group Insurance – Contracted Provider	160,299.25	140,245.70		300,544.95
220 Social Security Contributions	50,525.73	39,560.74		90,086.47
230 PSERS Retirement Contributions	224,276.98	176,478.50		400,755.48
250 Unemployment Compensation	1,722.32	1,085.88		2,808.20
260 Workers' Compensation	4,378.73	3,438.67		7,817.40
<b>Total Personnel Services – Employee Benefits</b>	<b>\$441,203.01</b>	<b>\$360,809.49</b>		<b>\$802,012.50</b>
<b>300 <u>Purchased Professional and Technical Services</u></b>				
329 Professional Educational Services – Other	8,992.79	8,289.35		17,282.14
330 Other Professional Services	618.75	618.75	174,250.47	175,487.97
390 Other Purchased Professional and Technical Services			225.00	225.00
<b>Total Purchased Professional and Technical Services</b>	<b>\$9,611.54</b>	<b>\$8,908.10</b>	<b>\$174,475.47</b>	<b>\$192,995.11</b>
<b>500 <u>Other Purchased Services</u></b>				
561 Tuition To Other School Districts Within the State	57,931.42			57,931.42
562 Tuition To Pennsylvania Charter Schools	170,495.71	170,495.70		340,991.41
563 Tuition To Nonpublic Schools			206,055.93	206,055.93
580 Travel	2,628.03	2,628.03		5,256.06
596 Direct Payments To Intermediate Units	117,302.58	116,128.12		233,430.70
<b>Total Other Purchased Services</b>	<b>\$348,357.74</b>	<b>\$289,251.85</b>	<b>\$206,055.93</b>	<b>\$843,665.52</b>
<b>600 <u>Supplies</u></b>				
610 General Supplies	4,912.94	3,819.07	1,901.88	10,633.89
640 Books and Periodicals	490.73	228.38		719.11
<b>Total Supplies</b>	<b>\$5,403.67</b>	<b>\$4,047.45</b>	<b>\$1,901.88</b>	<b>\$11,353.00</b>
<b>800 <u>Other Objects</u></b>				
810 Dues and Fees	4,841.60	6,650.63		11,492.23
<b>Total Other Objects</b>	<b>\$4,841.60</b>	<b>\$6,650.63</b>		<b>\$11,492.23</b>
<b>Total 1240 Academic Support</b>	<b>\$1,482,965.19</b>	<b>\$1,198,659.90</b>	<b>\$382,433.28</b>	<b>\$3,064,058.37</b>

LEA : 127045653      New Brighton Area SD

Printed 1/23/2020 9:58:35 AM

General Fund (10)

1241 Learning Support – Public	Elementary	Secondary	Federal	Total
100 <u>Personnel Services – Salaries</u>				
100 Personnel Services – Salaries	664,638.82	480,051.83		1,144,690.65
<b>Total Personnel Services – Salaries</b>	<b>\$664,638.82</b>	<b>\$480,051.83</b>		<b>\$1,144,690.65</b>
200 <u>Personnel Services – Employee Benefits</u>				
210 Group Insurance – Contracted Provider	155,921.28	128,970.01		284,891.29
220 Social Security Contributions	49,896.61	36,105.26		86,001.87
230 PSERS Retirement Contributions	221,298.75	160,117.56		381,416.31
250 Unemployment Compensation	1,713.20	1,035.77		2,748.97
260 Workers' Compensation	4,320.83	3,120.50		7,441.33
<b>Total Personnel Services – Employee Benefits</b>	<b>\$433,150.67</b>	<b>\$329,349.10</b>		<b>\$762,499.77</b>
300 <u>Purchased Professional and Technical Services</u>				
329 Professional Educational Services – Other	8,992.79	8,289.35		17,282.14
330 Other Professional Services			174,250.47	174,250.47
390 Other Purchased Professional and Technical Services			225.00	225.00
<b>Total Purchased Professional and Technical Services</b>	<b>\$8,992.79</b>	<b>\$8,289.35</b>	<b>\$174,475.47</b>	<b>\$191,757.61</b>
500 <u>Other Purchased Services</u>				
561 Tuition To Other School Districts Within the State	57,931.42			57,931.42
562 Tuition To Pennsylvania Charter Schools	170,495.71	170,495.70		340,991.41
563 Tuition To Nonpublic Schools			203,555.93	203,555.93
580 Travel	368.33	368.33		736.66
596 Direct Payments To Intermediate Units	117,302.58	116,128.12		233,430.70
<b>Total Other Purchased Services</b>	<b>\$346,098.04</b>	<b>\$286,992.15</b>	<b>\$203,555.93</b>	<b>\$836,646.12</b>
600 <u>Supplies</u>				
610 General Supplies	4,312.21	3,294.71	1,901.88	9,508.80
<b>Total Supplies</b>	<b>\$4,312.21</b>	<b>\$3,294.71</b>	<b>\$1,901.88</b>	<b>\$9,508.80</b>
<b>Total 1241 Learning Support – Public</b>	<b>\$1,457,192.53</b>	<b>\$1,107,977.14</b>	<b>\$379,933.28</b>	<b>\$2,945,102.95</b>

LEA : 127045653     New Brighton Area SD

Printed 1/23/2020 9:58:35 AM

General Fund (10)

1242 Learning Support – PRRI

<u>Elementary</u>	<u>Secondary</u>	<u>Federal</u>	<u>Total</u>
-------------------	------------------	----------------	--------------

500 Other Purchased Services

563 Tuition To Nonpublic Schools		2,500.00	2,500.00
----------------------------------	--	----------	----------

<b>Total Other Purchased Services</b>		<b>\$2,500.00</b>	<b>\$2,500.00</b>
---------------------------------------	--	-------------------	-------------------

<b>Total 1242 Learning Support – PRRI</b>		<b>\$2,500.00</b>	<b>\$2,500.00</b>
---	--	-------------------	-------------------

LEA : 127045653      New Brighton Area SD

Printed 1/23/2020 9:58:35 AM

General Fund (10)				
1243 Gifted Support				
	<u>Elementary</u>	<u>Secondary</u>	<u>Federal</u>	<u>Total</u>
100 <u>Personnel Services – Salaries</u>				
100 Personnel Services – Salaries	8,908.81	48,940.55		57,849.36
Total Personnel Services – Salaries	\$8,908.81	\$48,940.55		\$57,849.36
200 <u>Personnel Services – Employee Benefits</u>				
210 Group Insurance – Contracted Provider	4,377.97	11,275.69		15,653.66
220 Social Security Contributions	629.12	3,455.48		4,084.60
230 PSERS Retirement Contributions	2,978.23	16,360.94		19,339.17
250 Unemployment Compensation	9.12	50.11		59.23
260 Workers' Compensation	57.90	318.17		376.07
Total Personnel Services – Employee Benefits	\$8,052.34	\$31,460.39		\$39,512.73
300 <u>Purchased Professional and Technical Services</u>				
330 Other Professional Services	618.75	618.75		1,237.50
Total Purchased Professional and Technical Services	\$618.75	\$618.75		\$1,237.50
500 <u>Other Purchased Services</u>				
580 Travel	2,259.70	2,259.70		4,519.40
Total Other Purchased Services	\$2,259.70	\$2,259.70		\$4,519.40
600 <u>Supplies</u>				
610 General Supplies	600.73	524.36		1,125.09
640 Books and Periodicals	490.73	228.38		719.11
Total Supplies	\$1,091.46	\$752.74		\$1,844.20
800 <u>Other Objects</u>				
810 Dues and Fees	4,841.60	6,650.63		11,492.23
Total Other Objects	\$4,841.60	\$6,650.63		\$11,492.23
Total 1243 Gifted Support	\$25,772.66	\$90,682.76		\$116,455.42

LEA : 127045653     New Brighton Area SD

Printed 1/23/2020 9:58:35 AM

General Fund (10)

1280 Early Intervention Support	<u>Elementary</u>	<u>Secondary</u>	<u>Federal</u>	<u>Total</u>
500 <u>Other Purchased Services</u>				
594 IU Payment By Withholding for Institutionalized Children's Programs – Special Classes	1,174.45			1,174.45
Total Other Purchased Services	\$1,174.45			\$1,174.45
Total 1280 Early Intervention Support	\$1,174.45			\$1,174.45



LEA : 127045653     New Brighton Area SD

Printed 1/23/2020 9:58:35 AM

General Fund (10)

1290 Special Programs - Other Support	<u>Elementary</u>	<u>Secondary</u>	<u>Federal</u>	<u>Total</u>
500 <u>Other Purchased Services</u>				
567 Tuition To Approved Private Schools (APS) and PA Chartered Schools for the Deaf and Blind	89,379.88	89,379.87		178,759.75
Total Other Purchased Services	\$89,379.88	\$89,379.87		\$178,759.75
Total 1290 Special Programs - Other Support	\$89,379.88	\$89,379.87		\$178,759.75

LEA : 127045653      New Brighton Area SD

Printed 1/23/2020 9:58:35 AM

General Fund (10)				
1300 Vocational Education				
	<u>Elementary</u>	<u>Secondary</u>	<u>Federal</u>	<u>Total</u>
100 <u>Personnel Services – Salaries</u>				
100 Personnel Services – Salaries		480,547.40		480,547.40
Total Personnel Services – Salaries		\$480,547.40		\$480,547.40
200 <u>Personnel Services – Employee Benefits</u>				
210 Group Insurance – Contracted Provider		94,377.36		94,377.36
220 Social Security Contributions		32,998.42		32,998.42
230 PSERS Retirement Contributions		163,958.91		163,958.91
250 Unemployment Compensation		598.89		598.89
260 Workers' Compensation		3,123.39		3,123.39
Total Personnel Services – Employee Benefits		\$295,056.97		\$295,056.97
400 <u>Purchased Property Services</u>				
430 Repairs and Maintenance Services		1,405.97		1,405.97
Total Purchased Property Services		\$1,405.97		\$1,405.97
500 <u>Other Purchased Services</u>				
564 Tuition To Career and Technology Centers		486,507.57		486,507.57
Total Other Purchased Services		\$486,507.57		\$486,507.57
600 <u>Supplies</u>				
610 General Supplies		22,477.43		22,477.43
Total Supplies		\$22,477.43		\$22,477.43
Total 1300 Vocational Education		\$1,285,995.34		\$1,285,995.34

LEA : 127045653     New Brighton Area SD

Printed 1/23/2020 9:58:35 AM

General Fund (10)

1400 Other Instructional Programs – Elementary / Secondary	<u>Elementary</u>	<u>Secondary</u>	<u>Federal</u>	<u>Total</u>
<b>100 <u>Personnel Services – Salaries</u></b>				
100 Personnel Services – Salaries	8,362.50	10,000.00		18,362.50
<b>Total Personnel Services – Salaries</b>	<b>\$8,362.50</b>	<b>\$10,000.00</b>		<b>\$18,362.50</b>
<b>200 <u>Personnel Services – Employee Benefits</u></b>				
220 Social Security Contributions	639.78	765.05		1,404.83
230 PSERS Retirement Contributions	2,795.61	3,343.02		6,138.63
250 Unemployment Compensation	3.20	6.40		9.60
260 Workers' Compensation	54.38	65.00		119.38
<b>Total Personnel Services – Employee Benefits</b>	<b>\$3,492.97</b>	<b>\$4,179.47</b>		<b>\$7,672.44</b>
<b>300 <u>Purchased Professional and Technical Services</u></b>				
330 Other Professional Services	7,602.78	7,602.78		15,205.56
<b>Total Purchased Professional and Technical Services</b>	<b>\$7,602.78</b>	<b>\$7,602.78</b>		<b>\$15,205.56</b>
<b>500 <u>Other Purchased Services</u></b>				
561 Tuition To Other School Districts Within the State		18,190.50		18,190.50
568 Tuition To Private Residential Rehabilitative Institutions (PRRI) [In-State] and Detention Centers	30,359.60	30,359.60		60,719.20
<b>Total Other Purchased Services</b>	<b>\$30,359.60</b>	<b>\$48,550.10</b>		<b>\$78,909.70</b>
<b>Total 1400 Other Instructional Programs – Elementary / Secondary</b>	<b>\$49,817.85</b>	<b>\$70,332.35</b>		<b>\$120,150.20</b>

LEA : 127045653     New Brighton Area SD

Printed 1/23/2020 9:58:35 AM

General Fund (10)

1420 Summer School	<u>Elementary</u>	<u>Secondary</u>	<u>Federal</u>	<u>Total</u>
<b>100 <u>Personnel Services – Salaries</u></b>				
100 Personnel Services – Salaries	5,612.50	5,612.50		11,225.00
<b>Total Personnel Services – Salaries</b>	<b>\$5,612.50</b>	<b>\$5,612.50</b>		<b>\$11,225.00</b>
<b>200 <u>Personnel Services – Employee Benefits</u></b>				
220 Social Security Contributions	429.37	429.36		858.73
230 PSERS Retirement Contributions	1,876.27	1,876.26		3,752.53
250 Unemployment Compensation	0.40	0.40		0.80
260 Workers' Compensation	36.49	36.48		72.97
<b>Total Personnel Services – Employee Benefits</b>	<b>\$2,342.53</b>	<b>\$2,342.50</b>		<b>\$4,685.03</b>
<b>Total 1420 Summer School</b>	<b>\$7,955.03</b>	<b>\$7,955.00</b>		<b>\$15,910.03</b>

LEA : 127045653      New Brighton Area SD

Printed 1/23/2020 9:58:35 AM

General Fund (10)

1430 Homebound Instruction	<u>Elementary</u>	<u>Secondary</u>	<u>Federal</u>	<u>Total</u>
<b>100 <u>Personnel Services – Salaries</u></b>				
100 Personnel Services – Salaries		1,637.50		1,637.50
<b>Total Personnel Services – Salaries</b>		<b>\$1,637.50</b>		<b>\$1,637.50</b>
<b>200 <u>Personnel Services – Employee Benefits</u></b>				
220 Social Security Contributions		125.29		125.29
230 PSERS Retirement Contributions		547.42		547.42
250 Unemployment Compensation		3.20		3.20
260 Workers' Compensation		10.64		10.64
<b>Total Personnel Services – Employee Benefits</b>		<b>\$686.55</b>		<b>\$686.55</b>
<b>Total 1430 Homebound Instruction</b>		<b>\$2,324.05</b>		<b>\$2,324.05</b>

LEA : 127045653     New Brighton Area SD

Printed 1/23/2020 9:58:35 AM

General Fund (10)

1440 Alternative Regular Education Programs	<u>Elementary</u>	<u>Secondary</u>	<u>Federal</u>	<u>Total</u>
300 <u>Purchased Professional and Technical Services</u>				
330 Other Professional Services	7,602.78	7,602.78		15,205.56
Total Purchased Professional and Technical Services	\$7,602.78	\$7,602.78		\$15,205.56
500 <u>Other Purchased Services</u>				
561 Tuition To Other School Districts Within the State		18,190.50		18,190.50
568 Tuition To Private Residential Rehabilitative Institutions (PRRI) [In-State] and Detention Centers	30,359.60	30,359.60		60,719.20
Total Other Purchased Services	\$30,359.60	\$48,550.10		\$78,909.70
Total 1440 Alternative Regular Education Programs	\$37,962.38	\$56,152.88		\$94,115.26

LEA : 127045653     New Brighton Area SD

Printed 1/23/2020 9:58:35 AM

General Fund (10)

1442 Alternative Education Programs	<u>Elementary</u>	<u>Secondary</u>	<u>Federal</u>	<u>Total</u>
300 <u>Purchased Professional and Technical Services</u>				
330 Other Professional Services	7,602.78	7,602.78		15,205.56
<b>Total Purchased Professional and Technical Services</b>	<b>\$7,602.78</b>	<b>\$7,602.78</b>		<b>\$15,205.56</b>
500 <u>Other Purchased Services</u>				
561 Tuition To Other School Districts Within the State		18,190.50		18,190.50
568 Tuition To Private Residential Rehabilitative Institutions (PRRI) [In-State] and Detention Centers	30,359.60	30,359.60		60,719.20
<b>Total Other Purchased Services</b>	<b>\$30,359.60</b>	<b>\$48,550.10</b>		<b>\$78,909.70</b>
<b>Total 1442 Alternative Education Programs</b>	<b>\$37,962.38</b>	<b>\$56,152.88</b>		<b>\$94,115.26</b>

LEA : 127045653     New Brighton Area SD

Printed 1/23/2020 9:58:35 AM

General Fund (10)

1490 Additional Other Instructional Programs	<u>Elementary</u>	<u>Secondary</u>	<u>Federal</u>	<u>Total</u>
100 <u>Personnel Services – Salaries</u>				
100 Personnel Services – Salaries	2,750.00	2,750.00		5,500.00
<b>Total Personnel Services – Salaries</b>	<b>\$2,750.00</b>	<b>\$2,750.00</b>		<b>\$5,500.00</b>
200 <u>Personnel Services – Employee Benefits</u>				
220 Social Security Contributions	210.41	210.40		420.81
230 PSERS Retirement Contributions	919.34	919.34		1,838.68
250 Unemployment Compensation	2.80	2.80		5.60
260 Workers' Compensation	17.89	17.88		35.77
<b>Total Personnel Services – Employee Benefits</b>	<b>\$1,150.44</b>	<b>\$1,150.42</b>		<b>\$2,300.86</b>
<b>Total 1490 Additional Other Instructional Programs</b>	<b>\$3,900.44</b>	<b>\$3,900.42</b>		<b>\$7,800.86</b>



LEA : 127045653     New Brighton Area SD

Printed 1/23/2020 9:58:35 AM

General Fund (10)				
1500 Nonpublic School Programs	<u>Elementary</u>	<u>Secondary</u>	<u>Federal</u>	<u>Total</u>
300 <u>Purchased Professional and Technical Services</u>				
330 Other Professional Services			6,838.63	6,838.63
Total Purchased Professional and Technical Services			\$6,838.63	\$6,838.63
600 <u>Supplies</u>				
610 General Supplies			206.40	206.40
Total Supplies			\$206.40	\$206.40
Total 1500 Nonpublic School Programs			\$7,045.03	\$7,045.03

LEA : 127045653      New Brighton Area SD

Printed 1/23/2020 9:58:41 AM

General Fund (10)

2000 Support Services

Total

100	<u>Personnel Services – Salaries</u>	
100	Personnel Services – Salaries	2,647,237.34
Total Personnel Services – Salaries		\$2,647,237.34
200	<u>Personnel Services – Employee Benefits</u>	
210	Group Insurance – Contracted Provider	667,395.65
220	Social Security Contributions	198,646.06
230	PSERS Retirement Contributions	875,592.90
240	Tuition Reimbursement	21,276.00
250	Unemployment Compensation	4,130.97
260	Workers' Compensation	17,006.71
Total Personnel Services – Employee Benefits		\$1,784,048.29
300	<u>Purchased Professional and Technical Services</u>	
310	Official / Administrative Services	17,483.40
329	Professional Educational Services – Other	10,142.49
330	Other Professional Services	182,009.61
340	Technical Services	118,511.47
360	Employee Training and Development Services	804.20
390	Other Purchased Professional and Technical Services	90,196.91
Total Purchased Professional and Technical Services		\$419,148.08
400	<u>Purchased Property Services</u>	
410	Cleaning Services	16,586.21
420	Utility Services	293,401.29
430	Repairs and Maintenance Services	82,215.13
440	Rentals	13,978.65
Total Purchased Property Services		\$406,181.28
500	<u>Other Purchased Services</u>	
513	Contracted Carriers	1,123,173.86
516	Student Transportation Services From the IU	1,843.60
520	Insurance – General	4,184.00
523	General Property and Liability Insurance	105,407.00
530	Communications	49,824.28
549	Other Advertising/Public Relations	5,453.40
580	Travel	5,759.45
595	IU Payments By Withholding	6,954.53
Total Other Purchased Services		\$1,302,600.12
600	<u>Supplies</u>	
610	General Supplies	327,468.35
620	Energy	165,254.05
640	Books and Periodicals	13,341.65
Total Supplies		\$506,064.05
700	<u>Property</u>	
758	Capitalized Technology Software - Original	8,719.90
762	Capitalized Equipment - Replacement	75,677.45

LEA : 127045653     New Brighton Area SD

Printed 1/23/2020 9:58:41 AM

General Fund (10)	
2000 Support Services	<u>Total</u>
700 <u>Property</u>	
790 Other Property	20,450.00
Total Property	\$104,847.35
800 <u>Other Objects</u>	
810 Dues and Fees	18,533.84
899 Pass-Through Funds	9,595.68
Total Other Objects	\$28,129.52
Total 2000 Support Services	\$7,198,256.03

LEA : 127045653      New Brighton Area SD

Printed 1/23/2020 9:58:41 AM

General Fund (10)				
2100 Support Services – Students	<u>Elementary</u>	<u>Secondary</u>	<u>Federal</u>	<u>Total</u>
100 <u>Personnel Services – Salaries</u>				
100 Personnel Services – Salaries	149,002.64	202,245.38		457,417.02
<b>Total Personnel Services – Salaries</b>	<b>\$149,002.64</b>	<b>\$202,245.38</b>		<b>\$457,417.02</b>
200 <u>Personnel Services – Employee Benefits</u>				
210 Group Insurance – Contracted Provider	42,774.53	25,896.19		87,177.96
220 Social Security Contributions	11,225.22	15,235.88		34,502.03
230 PSERS Retirement Contributions	49,811.56	67,610.53		152,914.39
250 Unemployment Compensation	255.69	293.60		709.26
260 Workers' Compensation	968.39	1,314.62		2,973.22
<b>Total Personnel Services – Employee Benefits</b>	<b>\$105,035.39</b>	<b>\$110,350.82</b>		<b>\$278,276.86</b>
300 <u>Purchased Professional and Technical Services</u>				
330 Other Professional Services	48,183.40	48,183.40		96,366.80
390 Other Purchased Professional and Technical Services	105.87	214.96		320.83
<b>Total Purchased Professional and Technical Services</b>	<b>\$48,289.27</b>	<b>\$48,398.36</b>		<b>\$96,687.63</b>
500 <u>Other Purchased Services</u>				
580 Travel	170.13	230.10		474.51
<b>Total Other Purchased Services</b>	<b>\$170.13</b>	<b>\$230.10</b>		<b>\$474.51</b>
600 <u>Supplies</u>				
610 General Supplies	1,435.63	3,808.41		5,330.50
<b>Total Supplies</b>	<b>\$1,435.63</b>	<b>\$3,808.41</b>		<b>\$5,330.50</b>
800 <u>Other Objects</u>				
810 Dues and Fees	39.90	275.10		315.00
<b>Total Other Objects</b>	<b>\$39.90</b>	<b>\$275.10</b>		<b>\$315.00</b>
<b>Total 2100 Support Services – Students</b>	<b>\$303,972.96</b>	<b>\$365,308.17</b>		<b>\$838,501.52</b>

LEA : 127045653      New Brighton Area SD

Printed 1/23/2020 9:58:41 AM

General Fund (10)				
2120 Guidance Services	<u>Elementary</u>	<u>Secondary</u>	<u>Federal</u>	<u>Total</u>
100 <u>Personnel Services – Salaries</u>				
100 Personnel Services – Salaries	90,365.56	202,245.38		292,610.94
<b>Total Personnel Services – Salaries</b>	<b>\$90,365.56</b>	<b>\$202,245.38</b>		<b>\$292,610.94</b>
200 <u>Personnel Services – Employee Benefits</u>				
210 Group Insurance – Contracted Provider	24,319.49	25,896.19		50,215.68
220 Social Security Contributions	6,815.97	15,235.88		22,051.85
230 PSERS Retirement Contributions	30,209.21	67,610.53		97,819.74
250 Unemployment Compensation	106.41	293.60		400.01
260 Workers' Compensation	587.37	1,314.62		1,901.99
<b>Total Personnel Services – Employee Benefits</b>	<b>\$62,038.45</b>	<b>\$110,350.82</b>		<b>\$172,389.27</b>
300 <u>Purchased Professional and Technical Services</u>				
390 Other Purchased Professional and Technical Services	105.87	214.96		320.83
<b>Total Purchased Professional and Technical Services</b>	<b>\$105.87</b>	<b>\$214.96</b>		<b>\$320.83</b>
500 <u>Other Purchased Services</u>				
580 Travel	170.13	230.10		400.23
<b>Total Other Purchased Services</b>	<b>\$170.13</b>	<b>\$230.10</b>		<b>\$400.23</b>
600 <u>Supplies</u>				
610 General Supplies	891.67	3,264.46		4,156.13
<b>Total Supplies</b>	<b>\$891.67</b>	<b>\$3,264.46</b>		<b>\$4,156.13</b>
800 <u>Other Objects</u>				
810 Dues and Fees	39.90	275.10		315.00
<b>Total Other Objects</b>	<b>\$39.90</b>	<b>\$275.10</b>		<b>\$315.00</b>
<b>Total 2120 Guidance Services</b>	<b>\$153,611.58</b>	<b>\$316,580.82</b>		<b>\$470,192.40</b>

LEA : 127045653     New Brighton Area SD

Printed 1/23/2020 9:58:41 AM

General Fund (10)

2140 Psychological Services

300 Purchased Professional and Technical Services

	<u>Elementary</u>	<u>Secondary</u>	<u>Federal</u>	<u>Total</u>
330 Other Professional Services	48,183.40	48,183.40		96,366.80
<b>Total Purchased Professional and Technical Services</b>	<b>\$48,183.40</b>	<b>\$48,183.40</b>		<b>\$96,366.80</b>
<b>Total 2140 Psychological Services</b>	<b>\$48,183.40</b>	<b>\$48,183.40</b>		<b>\$96,366.80</b>

LEA : 127045653      New Brighton Area SD

Printed 1/23/2020 9:58:41 AM

General Fund (10)

2150 Speech Pathology and Audiology Services	<u>Elementary</u>	<u>Secondary</u>	<u>Federal</u>	<u>Total</u>
<b>100 <u>Personnel Services – Salaries</u></b>				
100 Personnel Services – Salaries	58,637.08			58,637.08
<b>Total Personnel Services – Salaries</b>	<b>\$58,637.08</b>			<b>\$58,637.08</b>
<b>200 <u>Personnel Services – Employee Benefits</u></b>				
210 Group Insurance – Contracted Provider	18,455.04			18,455.04
220 Social Security Contributions	4,409.25			4,409.25
230 PSERS Retirement Contributions	19,602.35			19,602.35
250 Unemployment Compensation	149.28			149.28
260 Workers' Compensation	381.02			381.02
<b>Total Personnel Services – Employee Benefits</b>	<b>\$42,996.94</b>			<b>\$42,996.94</b>
<b>600 <u>Supplies</u></b>				
610 General Supplies	543.96	543.95		1,087.91
<b>Total Supplies</b>	<b>\$543.96</b>	<b>\$543.95</b>		<b>\$1,087.91</b>
<b>Total 2150 Speech Pathology and Audiology Services</b>	<b>\$102,177.98</b>	<b>\$543.95</b>		<b>\$102,721.93</b>

LEA : 127045653      New Brighton Area SD

Printed 1/23/2020 9:58:41 AM

General Fund (10)

2160 Social Work Services

	<u>Elementary</u>	<u>Secondary</u>	<u>Federal</u>	<u>Total</u>
<b>100 <u>Personnel Services – Salaries</u></b>				
100 Personnel Services – Salaries				106,169.00
<b>Total Personnel Services – Salaries</b>				<b>\$106,169.00</b>
<b>200 <u>Personnel Services – Employee Benefits</u></b>				
210 Group Insurance – Contracted Provider				18,507.24
220 Social Security Contributions				8,040.93
230 PSERS Retirement Contributions				35,492.30
250 Unemployment Compensation				159.97
260 Workers' Compensation				690.21
<b>Total Personnel Services – Employee Benefits</b>				<b>\$62,890.65</b>
<b>500 <u>Other Purchased Services</u></b>				
580 Travel				74.28
<b>Total Other Purchased Services</b>				<b>\$74.28</b>
<b>600 <u>Supplies</u></b>				
610 General Supplies				86.46
<b>Total Supplies</b>				<b>\$86.46</b>
<b>Total 2160 Social Work Services</b>				<b>\$169,220.39</b>



LEA : 127045653      New Brighton Area SD

Printed 1/23/2020 9:58:41 AM

<b>General Fund (10)</b>				
<b>2200 Support Services – Instructional Staff</b>	<b><u>Elementary</u></b>	<b><u>Secondary</u></b>	<b><u>Federal</u></b>	<b><u>Total</u></b>
<b>100 <u>Personnel Services – Salaries</u></b>				
100 Personnel Services – Salaries	149,305.52	135,427.10		284,732.62
<b>Total Personnel Services – Salaries</b>	<b>\$149,305.52</b>	<b>\$135,427.10</b>		<b>\$284,732.62</b>
<b>200 <u>Personnel Services – Employee Benefits</u></b>				
210 Group Insurance – Contracted Provider	29,826.62	26,631.80		56,458.42
220 Social Security Contributions	11,227.71	10,234.24		21,461.95
230 PSERS Retirement Contributions	49,912.69	45,273.14		95,185.83
240 Tuition Reimbursement	2,400.00	18,876.00		21,276.00
250 Unemployment Compensation	243.12	217.05		460.17
260 Workers' Compensation	970.50	880.34		1,850.84
<b>Total Personnel Services – Employee Benefits</b>	<b>\$94,580.64</b>	<b>\$102,112.57</b>		<b>\$196,693.21</b>
<b>300 <u>Purchased Professional and Technical Services</u></b>				
360 Employee Training and Development Services	402.10	402.10		804.20
390 Other Purchased Professional and Technical Services	343.14	991.69		1,334.83
<b>Total Purchased Professional and Technical Services</b>	<b>\$745.24</b>	<b>\$1,393.79</b>		<b>\$2,139.03</b>
<b>500 <u>Other Purchased Services</u></b>				
580 Travel	580.03	340.01		920.04
<b>Total Other Purchased Services</b>	<b>\$580.03</b>	<b>\$340.01</b>		<b>\$920.04</b>
<b>600 <u>Supplies</u></b>				
610 General Supplies	2,932.77	3,696.19		6,628.96
640 Books and Periodicals	5,434.66	7,656.99		13,091.65
<b>Total Supplies</b>	<b>\$8,367.43</b>	<b>\$11,353.18</b>		<b>\$19,720.61</b>
<b>800 <u>Other Objects</u></b>				
810 Dues and Fees	5.00	5.00		10.00
<b>Total Other Objects</b>	<b>\$5.00</b>	<b>\$5.00</b>		<b>\$10.00</b>
<b>Total 2200 Support Services – Instructional Staff</b>	<b>\$253,583.86</b>	<b>\$250,631.65</b>		<b>\$504,215.51</b>

LEA : 127045653      New Brighton Area SD

Printed 1/23/2020 9:58:41 AM

General Fund (10)

2250 School Library Services	Elementary	Secondary	Federal	Total
<b>100 Personnel Services – Salaries</b>				
100 Personnel Services – Salaries	62,145.39	49,003.61		111,149.00
<b>Total Personnel Services – Salaries</b>	<b>\$62,145.39</b>	<b>\$49,003.61</b>		<b>\$111,149.00</b>
<b>200 Personnel Services – Employee Benefits</b>				
210 Group Insurance – Contracted Provider	18,604.72	15,409.92		34,014.64
220 Social Security Contributions	4,607.60	3,672.11		8,279.71
230 PSERS Retirement Contributions	20,775.13	16,381.85		37,156.98
250 Unemployment Compensation	93.21	66.80		160.01
260 Workers' Compensation	403.99	318.62		722.61
<b>Total Personnel Services – Employee Benefits</b>	<b>\$44,484.65</b>	<b>\$35,849.30</b>		<b>\$80,333.95</b>
<b>300 Purchased Professional and Technical Services</b>				
390 Other Purchased Professional and Technical Services	343.14	991.69		1,334.83
<b>Total Purchased Professional and Technical Services</b>	<b>\$343.14</b>	<b>\$991.69</b>		<b>\$1,334.83</b>
<b>600 Supplies</b>				
610 General Supplies	1,672.92	2,892.10		4,565.02
640 Books and Periodicals	5,434.66	7,656.99		13,091.65
<b>Total Supplies</b>	<b>\$7,107.58</b>	<b>\$10,549.09</b>		<b>\$17,656.67</b>
<b>Total 2250 School Library Services</b>	<b>\$114,080.76</b>	<b>\$96,393.69</b>		<b>\$210,474.45</b>

LEA : 127045653      New Brighton Area SD

Printed 1/23/2020 9:58:41 AM

General Fund (10)				
2260 Instruction and Curriculum Development Services	<u>Elementary</u>	<u>Secondary</u>	<u>Federal</u>	<u>Total</u>
100 <u>Personnel Services – Salaries</u>				
100 Personnel Services – Salaries	87,160.13	86,423.49		173,583.62
<b>Total Personnel Services – Salaries</b>	<b>\$87,160.13</b>	<b>\$86,423.49</b>		<b>\$173,583.62</b>
200 <u>Personnel Services – Employee Benefits</u>				
210 Group Insurance – Contracted Provider	11,221.90	11,221.88		22,443.78
220 Social Security Contributions	6,620.11	6,562.13		13,182.24
230 PSERS Retirement Contributions	29,137.56	28,891.29		58,028.85
250 Unemployment Compensation	149.91	150.25		300.16
260 Workers' Compensation	566.51	561.72		1,128.23
<b>Total Personnel Services – Employee Benefits</b>	<b>\$47,695.99</b>	<b>\$47,387.27</b>		<b>\$95,083.26</b>
500 <u>Other Purchased Services</u>				
580 Travel	185.58	185.58		371.16
<b>Total Other Purchased Services</b>	<b>\$185.58</b>	<b>\$185.58</b>		<b>\$371.16</b>
600 <u>Supplies</u>				
610 General Supplies	667.92	667.91		1,335.83
<b>Total Supplies</b>	<b>\$667.92</b>	<b>\$667.91</b>		<b>\$1,335.83</b>
800 <u>Other Objects</u>				
810 Dues and Fees	5.00	5.00		10.00
<b>Total Other Objects</b>	<b>\$5.00</b>	<b>\$5.00</b>		<b>\$10.00</b>
<b>Total 2260 Instruction and Curriculum Development Services</b>	<b>\$135,714.62</b>	<b>\$134,669.25</b>		<b>\$270,383.87</b>

LEA : 127045653      New Brighton Area SD

Printed 1/23/2020 9:58:41 AM

General Fund (10)				
2270 Instructional Staff Professional Development Services	<u>Elementary</u>	<u>Secondary</u>	<u>Federal</u>	<u>Total</u>
200 <u>Personnel Services – Employee Benefits</u>				
240 Tuition Reimbursement	2,400.00	18,876.00		21,276.00
Total Personnel Services – Employee Benefits	\$2,400.00	\$18,876.00		\$21,276.00
300 <u>Purchased Professional and Technical Services</u>				
360 Employee Training and Development Services	402.10	402.10		804.20
Total Purchased Professional and Technical Services	\$402.10	\$402.10		\$804.20
500 <u>Other Purchased Services</u>				
580 Travel	394.45	154.43		548.88
Total Other Purchased Services	\$394.45	\$154.43		\$548.88
600 <u>Supplies</u>				
610 General Supplies	591.93	136.18		728.11
Total Supplies	\$591.93	\$136.18		\$728.11
Total 2270 Instructional Staff Professional Development Services	\$3,788.48	\$19,568.71		\$23,357.19

LEA : 127045653      New Brighton Area SD

Printed 1/23/2020 9:58:41 AM

<b>General Fund (10)</b>				
<b>2300 Support Services – Administration</b>	<u><b>Elementary</b></u>	<u><b>Secondary</b></u>	<u><b>Federal</b></u>	<u><b>Total</b></u>
<b>100 <u>Personnel Services – Salaries</u></b>				
100 Personnel Services – Salaries	225,881.40	336,859.64		776,500.48
<b>Total Personnel Services – Salaries</b>	<b>\$225,881.40</b>	<b>\$336,859.64</b>		<b>\$776,500.48</b>
<b>200 <u>Personnel Services – Employee Benefits</u></b>				
210 Group Insurance – Contracted Provider	57,440.57	67,320.93		162,885.42
220 Social Security Contributions	16,992.99	25,424.48		58,528.92
230 PSERS Retirement Contributions	75,512.18	112,612.20		248,485.26
250 Unemployment Compensation	298.91	392.21		851.10
260 Workers' Compensation	1,468.12	2,189.44		4,831.20
<b>Total Personnel Services – Employee Benefits</b>	<b>\$151,712.77</b>	<b>\$207,939.26</b>		<b>\$475,581.90</b>
<b>300 <u>Purchased Professional and Technical Services</u></b>				
310 Official / Administrative Services				17,483.40
329 Professional Educational Services – Other	890.19	3,261.51		4,151.70
330 Other Professional Services				38,948.50
390 Other Purchased Professional and Technical Services				4,992.50
<b>Total Purchased Professional and Technical Services</b>	<b>\$890.19</b>	<b>\$3,261.51</b>		<b>\$65,576.10</b>
<b>400 <u>Purchased Property Services</u></b>				
430 Repairs and Maintenance Services	40.89			40.89
440 Rentals				9,238.39
<b>Total Purchased Property Services</b>	<b>\$40.89</b>			<b>\$9,279.28</b>
<b>500 <u>Other Purchased Services</u></b>				
520 Insurance – General				4,184.00
530 Communications	4,130.06	7,837.48		11,967.54
549 Other Advertising/Public Relations				5,453.40
580 Travel	526.28	1,417.84		3,508.05
<b>Total Other Purchased Services</b>	<b>\$4,656.34</b>	<b>\$9,255.32</b>		<b>\$25,112.99</b>
<b>600 <u>Supplies</u></b>				
610 General Supplies	2,864.91	3,708.77		27,764.33
<b>Total Supplies</b>	<b>\$2,864.91</b>	<b>\$3,708.77</b>		<b>\$27,764.33</b>
<b>800 <u>Other Objects</u></b>				
810 Dues and Fees	731.61	872.37		14,304.54
<b>Total Other Objects</b>	<b>\$731.61</b>	<b>\$872.37</b>		<b>\$14,304.54</b>
<b>Total 2300 Support Services – Administration</b>	<b>\$386,778.11</b>	<b>\$561,896.87</b>		<b>\$1,394,119.62</b>

LEA : 127045653      New Brighton Area SD

Printed 1/23/2020 9:58:41 AM

General Fund (10)				
2310 Board Services	<u>Elementary</u>	<u>Secondary</u>	<u>Federal</u>	<u>Total</u>
100 <u>Personnel Services – Salaries</u>				
100 Personnel Services – Salaries				2,500.08
Total Personnel Services – Salaries				\$2,500.08
200 <u>Personnel Services – Employee Benefits</u>				
220 Social Security Contributions				187.04
230 PSERS Retirement Contributions				835.68
250 Unemployment Compensation				3.95
260 Workers' Compensation				16.32
Total Personnel Services – Employee Benefits				\$1,042.99
300 <u>Purchased Professional and Technical Services</u>				
330 Other Professional Services				12,958.00
Total Purchased Professional and Technical Services				\$12,958.00
500 <u>Other Purchased Services</u>				
549 Other Advertising/Public Relations				5,084.20
580 Travel				153.00
Total Other Purchased Services				\$5,237.20
600 <u>Supplies</u>				
610 General Supplies				425.70
Total Supplies				\$425.70
800 <u>Other Objects</u>				
810 Dues and Fees				1,200.00
Total Other Objects				\$1,200.00
Total 2310 Board Services				\$23,363.97

LEA : 127045653      New Brighton Area SD

Printed 1/23/2020 9:58:41 AM

General Fund (10)

2330 Tax Assessment and Collection Services	<u>Elementary</u>	<u>Secondary</u>	<u>Federal</u>	<u>Total</u>
100 <u>Personnel Services – Salaries</u>				
100 Personnel Services – Salaries				33,200.08
Total Personnel Services – Salaries				\$33,200.08
200 <u>Personnel Services – Employee Benefits</u>				
220 Social Security Contributions				2,539.89
Total Personnel Services – Employee Benefits				\$2,539.89
300 <u>Purchased Professional and Technical Services</u>				
310 Official / Administrative Services				17,483.40
Total Purchased Professional and Technical Services				\$17,483.40
500 <u>Other Purchased Services</u>				
520 Insurance – General				4,184.00
Total Other Purchased Services				\$4,184.00
600 <u>Supplies</u>				
610 General Supplies				15,665.16
Total Supplies				\$15,665.16
Total 2330 Tax Assessment and Collection Services				\$73,072.53

LEA : 127045653     New Brighton Area SD

Printed 1/23/2020 9:58:41 AM

General Fund (10)

2340 Staff Relations and Negotiations Services	<u>Elementary</u>	<u>Secondary</u>	<u>Federal</u>	<u>Total</u>
100 <u>Personnel Services – Salaries</u>				
100 Personnel Services – Salaries				854.28
Total Personnel Services – Salaries				\$854.28
200 <u>Personnel Services – Employee Benefits</u>				
220 Social Security Contributions				65.36
230 PSERS Retirement Contributions				285.59
260 Workers’ Compensation				5.56
Total Personnel Services – Employee Benefits				\$356.51
Total 2340 Staff Relations and Negotiations Services				\$1,210.79



LEA : 127045653     New Brighton Area SD

Printed 1/23/2020 9:58:41 AM

General Fund (10)

2350 Legal and Accounting Services	<u>Elementary</u>	<u>Secondary</u>	<u>Federal</u>	<u>Total</u>
300 <u>Purchased Professional and Technical Services</u>				
330 Other Professional Services				25,990.50
<b>Total Purchased Professional and Technical Services</b>				<b>\$25,990.50</b>
<b>Total 2350 Legal and Accounting Services</b>				<b>\$25,990.50</b>

LEA : 127045653      New Brighton Area SD

Printed 1/23/2020 9:58:41 AM

General Fund (10)				
2360 Office of the Superintendent / Executive Director Services	<u>Elementary</u>	<u>Secondary</u>	<u>Federal</u>	<u>Total</u>
100 <u>Personnel Services – Salaries</u>				
100 Personnel Services – Salaries				177,205.00
Total Personnel Services – Salaries				\$177,205.00
200 <u>Personnel Services – Employee Benefits</u>				
210 Group Insurance – Contracted Provider				38,123.92
220 Social Security Contributions				13,319.16
230 PSERS Retirement Contributions				59,239.61
250 Unemployment Compensation				156.03
260 Workers' Compensation				1,151.76
Total Personnel Services – Employee Benefits				\$111,990.48
300 <u>Purchased Professional and Technical Services</u>				
390 Other Purchased Professional and Technical Services				4,992.50
Total Purchased Professional and Technical Services				\$4,992.50
400 <u>Purchased Property Services</u>				
440 Rentals				9,238.39
Total Purchased Property Services				\$9,238.39
500 <u>Other Purchased Services</u>				
530 Communications	1,209.51	1,209.51		2,419.02
580 Travel				1,410.93
Total Other Purchased Services	\$1,209.51	\$1,209.51		\$3,829.95
600 <u>Supplies</u>				
610 General Supplies				3,911.40
Total Supplies				\$3,911.40
800 <u>Other Objects</u>				
810 Dues and Fees				11,500.56
Total Other Objects				\$11,500.56
Total 2360 Office of the Superintendent / Executive Director Services	\$1,209.51	\$1,209.51		\$322,668.28

LEA : 127045653     New Brighton Area SD

Printed 1/23/2020 9:58:41 AM

General Fund (10)

2370 Community Relations Services	<u>Elementary</u>	<u>Secondary</u>	<u>Federal</u>	<u>Total</u>
500 <u>Other Purchased Services</u>				
549 Other Advertising/Public Relations				369.20
Total Other Purchased Services				\$369.20
600 <u>Supplies</u>				
610 General Supplies				1,188.39
Total Supplies				\$1,188.39
Total 2370 Community Relations Services				\$1,557.59

LEA : 127045653      New Brighton Area SD

Printed 1/23/2020 9:58:41 AM

General Fund (10)				
2380 Office of the Principal Services	<u>Elementary</u>	<u>Secondary</u>	<u>Federal</u>	<u>Total</u>
100 <u>Personnel Services – Salaries</u>				
100 Personnel Services – Salaries	225,881.40	336,859.64		562,741.04
<b>Total Personnel Services – Salaries</b>	<b>\$225,881.40</b>	<b>\$336,859.64</b>		<b>\$562,741.04</b>
200 <u>Personnel Services – Employee Benefits</u>				
210 Group Insurance – Contracted Provider	57,440.57	67,320.93		124,761.50
220 Social Security Contributions	16,992.99	25,424.48		42,417.47
230 PSERS Retirement Contributions	75,512.18	112,612.20		188,124.38
250 Unemployment Compensation	298.91	392.21		691.12
260 Workers' Compensation	1,468.12	2,189.44		3,657.56
<b>Total Personnel Services – Employee Benefits</b>	<b>\$151,712.77</b>	<b>\$207,939.26</b>		<b>\$359,652.03</b>
300 <u>Purchased Professional and Technical Services</u>				
329 Professional Educational Services – Other	890.19	3,261.51		4,151.70
<b>Total Purchased Professional and Technical Services</b>	<b>\$890.19</b>	<b>\$3,261.51</b>		<b>\$4,151.70</b>
400 <u>Purchased Property Services</u>				
430 Repairs and Maintenance Services	40.89			40.89
<b>Total Purchased Property Services</b>	<b>\$40.89</b>			<b>\$40.89</b>
500 <u>Other Purchased Services</u>				
530 Communications	2,920.55	6,627.97		9,548.52
580 Travel	526.28	1,417.84		1,944.12
<b>Total Other Purchased Services</b>	<b>\$3,446.83</b>	<b>\$8,045.81</b>		<b>\$11,492.64</b>
600 <u>Supplies</u>				
610 General Supplies	2,864.91	3,708.77		6,573.68
<b>Total Supplies</b>	<b>\$2,864.91</b>	<b>\$3,708.77</b>		<b>\$6,573.68</b>
800 <u>Other Objects</u>				
810 Dues and Fees	731.61	872.37		1,603.98
<b>Total Other Objects</b>	<b>\$731.61</b>	<b>\$872.37</b>		<b>\$1,603.98</b>
<b>Total 2380 Office of the Principal Services</b>	<b>\$385,568.60</b>	<b>\$560,687.36</b>		<b>\$946,255.96</b>

LEA : 127045653      New Brighton Area SD

Printed 1/23/2020 9:58:41 AM

General Fund (10)				
2400 Support Services – Pupil Health	<u>Elementary</u>	<u>Secondary</u>	<u>Federal</u>	<u>Total</u>
100 <u>Personnel Services – Salaries</u>				
100 Personnel Services – Salaries				137,364.42
Total Personnel Services – Salaries				\$137,364.42
200 <u>Personnel Services – Employee Benefits</u>				
210 Group Insurance – Contracted Provider				25,259.76
220 Social Security Contributions				10,141.58
230 PSERS Retirement Contributions				45,920.72
250 Unemployment Compensation				244.29
260 Workers' Compensation				892.75
Total Personnel Services – Employee Benefits				\$82,459.10
300 <u>Purchased Professional and Technical Services</u>				
329 Professional Educational Services – Other				5,990.79
330 Other Professional Services				29,121.11
Total Purchased Professional and Technical Services				\$35,111.90
600 <u>Supplies</u>				
610 General Supplies				3,692.38
Total Supplies				\$3,692.38
700 <u>Property</u>				
762 Capitalized Equipment - Replacement				3,343.45
Total Property				\$3,343.45
Total 2400 Support Services – Pupil Health				\$261,971.25

LEA : 127045653      New Brighton Area SD

Printed 1/23/2020 9:58:41 AM

General Fund (10)				
2420 Medical Services	<u>Elementary</u>	<u>Secondary</u>	<u>Federal</u>	<u>Total</u>
100 <u>Personnel Services – Salaries</u>				
100 Personnel Services – Salaries				137,364.42
Total Personnel Services – Salaries				\$137,364.42
200 <u>Personnel Services – Employee Benefits</u>				
210 Group Insurance – Contracted Provider				25,259.76
220 Social Security Contributions				10,141.58
230 PSERS Retirement Contributions				45,920.72
250 Unemployment Compensation				244.29
260 Workers' Compensation				892.75
Total Personnel Services – Employee Benefits				\$82,459.10
300 <u>Purchased Professional and Technical Services</u>				
329 Professional Educational Services – Other				5,990.79
330 Other Professional Services				27,141.11
Total Purchased Professional and Technical Services				\$33,131.90
600 <u>Supplies</u>				
610 General Supplies				3,692.38
Total Supplies				\$3,692.38
700 <u>Property</u>				
762 Capitalized Equipment - Replacement				3,343.45
Total Property				\$3,343.45
Total 2420 Medical Services				\$259,991.25

Page 71

LEA : 127045653      New Brighton Area SD

Printed 1/23/2020 9:58:41 AM

General Fund (10)				
2500 Support Services – Business	<u>Elementary</u>	<u>Secondary</u>	<u>Federal</u>	<u>Total</u>
100 <u>Personnel Services – Salaries</u>				
100 Personnel Services – Salaries				173,418.32
Total Personnel Services – Salaries				\$173,418.32
200 <u>Personnel Services – Employee Benefits</u>				
210 Group Insurance – Contracted Provider				43,245.52
220 Social Security Contributions				12,933.06
230 PSERS Retirement Contributions				59,233.52
250 Unemployment Compensation				240.01
260 Workers' Compensation				1,127.07
Total Personnel Services – Employee Benefits				\$116,779.18
300 <u>Purchased Professional and Technical Services</u>				
330 Other Professional Services				17,573.20
Total Purchased Professional and Technical Services				\$17,573.20
500 <u>Other Purchased Services</u>				
580 Travel				845.45
Total Other Purchased Services				\$845.45
600 <u>Supplies</u>				
610 General Supplies				1,936.74
640 Books and Periodicals				250.00
Total Supplies				\$2,186.74
800 <u>Other Objects</u>				
810 Dues and Fees				3,795.72
Total Other Objects				\$3,795.72
Total 2500 Support Services – Business				\$314,598.61



LEA : 127045653      New Brighton Area SD

Printed 1/23/2020 9:58:41 AM

General Fund (10)				
2510 Fiscal Services	<u>Elementary</u>	<u>Secondary</u>	<u>Federal</u>	<u>Total</u>
100 <u>Personnel Services – Salaries</u>				
100 Personnel Services – Salaries				173,418.32
Total Personnel Services – Salaries				\$173,418.32
200 <u>Personnel Services – Employee Benefits</u>				
210 Group Insurance – Contracted Provider				43,245.52
220 Social Security Contributions				12,933.06
230 PSERS Retirement Contributions				59,233.52
250 Unemployment Compensation				240.01
260 Workers' Compensation				1,127.07
Total Personnel Services – Employee Benefits				\$116,779.18
300 <u>Purchased Professional and Technical Services</u>				
330 Other Professional Services				17,573.20
Total Purchased Professional and Technical Services				\$17,573.20
500 <u>Other Purchased Services</u>				
580 Travel				845.45
Total Other Purchased Services				\$845.45
600 <u>Supplies</u>				
610 General Supplies				1,936.74
640 Books and Periodicals				250.00
Total Supplies				\$2,186.74
800 <u>Other Objects</u>				
810 Dues and Fees				3,795.72
Total Other Objects				\$3,795.72
Total 2510 Fiscal Services				\$314,598.61

LEA : 127045653      New Brighton Area SD

Printed 1/23/2020 9:58:41 AM

General Fund (10)				
2511 Supervision of Fiscal Services - Head of Component	<u>Elementary</u>	<u>Secondary</u>	<u>Federal</u>	<u>Total</u>
100 <u>Personnel Services – Salaries</u>				
100 Personnel Services – Salaries				173,418.32
Total Personnel Services – Salaries				\$173,418.32
200 <u>Personnel Services – Employee Benefits</u>				
210 Group Insurance – Contracted Provider				43,245.52
220 Social Security Contributions				12,933.06
230 PSERS Retirement Contributions				59,233.52
250 Unemployment Compensation				240.01
260 Workers' Compensation				1,127.07
Total Personnel Services – Employee Benefits				\$116,779.18
300 <u>Purchased Professional and Technical Services</u>				
330 Other Professional Services				17,573.20
Total Purchased Professional and Technical Services				\$17,573.20
500 <u>Other Purchased Services</u>				
580 Travel				845.45
Total Other Purchased Services				\$845.45
600 <u>Supplies</u>				
610 General Supplies				1,936.74
640 Books and Periodicals				250.00
Total Supplies				\$2,186.74
800 <u>Other Objects</u>				
810 Dues and Fees				2,071.28
Total Other Objects				\$2,071.28
Total 2511 Supervision of Fiscal Services - Head of Component				\$312,874.17

LEA : 127045653     New Brighton Area SD

Printed 1/23/2020 9:58:41 AM

General Fund (10)				
2519 Other Fiscal Services	<u>Elementary</u>	<u>Secondary</u>	<u>Federal</u>	<u>Total</u>
800 <u>Other Objects</u>				
810 Dues and Fees				1,724.44
Total Other Objects				\$1,724.44
Total 2519 Other Fiscal Services				\$1,724.44

LEA : 127045653      New Brighton Area SD

Printed 1/23/2020 9:58:41 AM

General Fund (10)				
2600 Operation and Maintenance of Plant Services	<u>Elementary</u>	<u>Secondary</u>	<u>Federal</u>	<u>Total</u>
100 <u>Personnel Services – Salaries</u>				
100 Personnel Services – Salaries				719,242.24
Total Personnel Services – Salaries				\$719,242.24
200 <u>Personnel Services – Employee Benefits</u>				
210 Group Insurance – Contracted Provider				256,256.49
220 Social Security Contributions				53,619.42
230 PSERS Retirement Contributions				240,903.76
250 Unemployment Compensation				1,466.14
260 Workers' Compensation				4,690.94
Total Personnel Services – Employee Benefits				\$556,936.75
300 <u>Purchased Professional and Technical Services</u>				
390 Other Purchased Professional and Technical Services				80,148.75
Total Purchased Professional and Technical Services				\$80,148.75
400 <u>Purchased Property Services</u>				
410 Cleaning Services				16,586.21
420 Utility Services				293,401.29
430 Repairs and Maintenance Services				75,768.44
440 Rentals				4,740.26
Total Purchased Property Services				\$390,496.20
500 <u>Other Purchased Services</u>				
523 General Property and Liability Insurance				105,407.00
530 Communications				37,856.74
580 Travel				11.40
Total Other Purchased Services				\$143,275.14
600 <u>Supplies</u>				
610 General Supplies	85,077.20	85,077.19		170,154.39
620 Energy				165,254.05
Total Supplies	\$85,077.20	\$85,077.19		\$335,408.44
700 <u>Property</u>				
762 Capitalized Equipment - Replacement				72,334.00
790 Other Property				20,450.00
Total Property				\$92,784.00
800 <u>Other Objects</u>				
810 Dues and Fees				108.58
Total Other Objects				\$108.58
Total 2600 Operation and Maintenance of Plant Services	\$85,077.20	\$85,077.19		\$2,318,400.10

LEA : 127045653     New Brighton Area SD

Printed 1/23/2020 9:58:41 AM

General Fund (10)

2610 Supervision of Operation and Maintenance of Plant Services	<u>Elementary</u>	<u>Secondary</u>	<u>Federal</u>	<u>Total</u>
100 <u>Personnel Services – Salaries</u>				
100 Personnel Services – Salaries				78,162.23
Total Personnel Services – Salaries				\$78,162.23
200 <u>Personnel Services – Employee Benefits</u>				
210 Group Insurance – Contracted Provider				20,181.78
220 Social Security Contributions				5,798.10
230 PSERS Retirement Contributions				26,129.69
250 Unemployment Compensation				113.85
260 Workers' Compensation				507.99
Total Personnel Services – Employee Benefits				\$52,731.41
Total 2610 Supervision of Operation and Maintenance of Plant Services				\$130,893.64

LEA : 127045653     New Brighton Area SD

Printed 1/23/2020 9:58:41 AM

General Fund (10)

2611 Supervision of Operation and Maintenance of Plant Services – Head of Component	<u>Elementary</u>	<u>Secondary</u>	<u>Federal</u>	<u>Total</u>
100 <u>Personnel Services – Salaries</u>				
100 Personnel Services – Salaries				78,162.23
Total Personnel Services – Salaries				\$78,162.23
200 <u>Personnel Services – Employee Benefits</u>				
210 Group Insurance – Contracted Provider				20,181.78
220 Social Security Contributions				5,798.10
230 PSERS Retirement Contributions				26,129.69
250 Unemployment Compensation				113.85
260 Workers' Compensation				507.99
Total Personnel Services – Employee Benefits				\$52,731.41
Total 2611 Supervision of Operation and Maintenance of Plant Services – Head of Component				\$130,893.64

LEA : 127045653      New Brighton Area SD

Printed 1/23/2020 9:58:41 AM

General Fund (10)				
2620 Operation of Buildings Services	<u>Elementary</u>	<u>Secondary</u>	<u>Federal</u>	<u>Total</u>
100 <u>Personnel Services – Salaries</u>				
100 Personnel Services – Salaries				570,451.31
Total Personnel Services – Salaries				\$570,451.31
200 <u>Personnel Services – Employee Benefits</u>				
210 Group Insurance – Contracted Provider				200,303.47
220 Social Security Contributions				42,555.18
230 PSERS Retirement Contributions				191,163.01
250 Unemployment Compensation				1,221.54
260 Workers' Compensation				3,723.66
Total Personnel Services – Employee Benefits				\$438,966.86
300 <u>Purchased Professional and Technical Services</u>				
390 Other Purchased Professional and Technical Services				80,148.75
Total Purchased Professional and Technical Services				\$80,148.75
400 <u>Purchased Property Services</u>				
410 Cleaning Services				16,586.21
420 Utility Services				293,401.29
430 Repairs and Maintenance Services				71,101.19
440 Rentals				4,740.26
Total Purchased Property Services				\$385,828.95
500 <u>Other Purchased Services</u>				
523 General Property and Liability Insurance				105,407.00
530 Communications				37,856.74
580 Travel				11.40
Total Other Purchased Services				\$143,275.14
600 <u>Supplies</u>				
610 General Supplies	71,765.09	71,765.09		143,530.18
620 Energy				161,738.11
Total Supplies	\$71,765.09	\$71,765.09		\$305,268.29
800 <u>Other Objects</u>				
810 Dues and Fees				108.58
Total Other Objects				\$108.58
Total 2620 Operation of Buildings Services	\$71,765.09	\$71,765.09		\$1,924,047.88

LEA : 127045653      New Brighton Area SD

Printed 1/23/2020 9:58:41 AM

General Fund (10)				
2630 Care and Upkeep of Grounds Services	<u>Elementary</u>	<u>Secondary</u>	<u>Federal</u>	<u>Total</u>
100 <u>Personnel Services – Salaries</u>				
100 Personnel Services – Salaries				70,628.70
Total Personnel Services – Salaries				\$70,628.70
200 <u>Personnel Services – Employee Benefits</u>				
210 Group Insurance – Contracted Provider				35,771.24
220 Social Security Contributions				5,266.14
230 PSERS Retirement Contributions				23,611.06
250 Unemployment Compensation				130.75
260 Workers' Compensation				459.29
Total Personnel Services – Employee Benefits				\$65,238.48
400 <u>Purchased Property Services</u>				
430 Repairs and Maintenance Services				3,682.08
Total Purchased Property Services				\$3,682.08
600 <u>Supplies</u>				
610 General Supplies	12,110.35	12,110.35		24,220.70
Total Supplies	\$12,110.35	\$12,110.35		\$24,220.70
Total 2630 Care and Upkeep of Grounds Services	\$12,110.35	\$12,110.35		\$163,769.96



LEA : 127045653     New Brighton Area SD

Printed 1/23/2020 9:58:41 AM

General Fund (10)

2650 Vehicle Operation and Maintenance Services (Other Than Student Transportation Vehicles)	<u>Elementary</u>	<u>Secondary</u>	<u>Federal</u>	<u>Total</u>
400 <u>Purchased Property Services</u>				
430 Repairs and Maintenance Services				985.17
Total Purchased Property Services				\$985.17
600 <u>Supplies</u>				
610 General Supplies	1,201.76	1,201.75		2,403.51
620 Energy				3,515.94
Total Supplies	\$1,201.76	\$1,201.75		\$5,919.45
Total 2650 Vehicle Operation and Maintenance Services (Other Than Student Transportation Vehicles)	\$1,201.76	\$1,201.75		\$6,904.62

LEA : 127045653     New Brighton Area SD

Printed 1/23/2020 9:58:41 AM

General Fund (10)

2690 Other Operation and Maintenance of Plant Services

Elementary                      Secondary                      Federal                      Total

700 <u>Property</u>				
762 Capitalized Equipment - Replacement				72,334.00
790 Other Property				20,450.00
<b>Total Property</b>				<b>\$92,784.00</b>
<b>Total 2690 Other Operation and Maintenance of Plant Services</b>				<b>\$92,784.00</b>

LEA : 127045653     New Brighton Area SD

Printed 1/23/2020 9:58:41 AM

General Fund (10)

2700 Student Transportation Services	<u>Elementary</u>	<u>Secondary</u>	<u>Federal</u>	<u>Total</u>
500 <u>Other Purchased Services</u>				
513 Contracted Carriers				1,123,173.86
516 Student Transportation Services From the IU				1,843.60
Total Other Purchased Services				\$1,125,017.46
Total 2700 Student Transportation Services				\$1,125,017.46

LEA : 127045653      New Brighton Area SD

Printed 1/23/2020 9:58:41 AM

General Fund (10)				
2720 Vehicle Operation Services	<u>Elementary</u>	<u>Secondary</u>	<u>Federal</u>	<u>Total</u>
500 <u>Other Purchased Services</u>				
513 Contracted Carriers				1,101,228.86
516 Student Transportation Services From the IU				1,843.60
Total Other Purchased Services				\$1,103,072.46
Total 2720 Vehicle Operation Services				\$1,103,072.46

LEA : 127045653     New Brighton Area SD

Printed 1/23/2020 9:58:41 AM

General Fund (10)

2750 Nonpublic Transportation	<u>Elementary</u>	<u>Secondary</u>	<u>Federal</u>	<u>Total</u>
500 <u>Other Purchased Services</u>				
513 Contracted Carriers				21,945.00
Total Other Purchased Services				\$21,945.00
Total 2750 Nonpublic Transportation				\$21,945.00

LEA : 127045653      New Brighton Area SD

Printed 1/23/2020 9:58:41 AM

General Fund (10)				
2800 Support Services – Central	<u>Elementary</u>	<u>Secondary</u>	<u>Federal</u>	<u>Total</u>
100 <u>Personnel Services – Salaries</u>				
100 Personnel Services – Salaries				98,562.24
Total Personnel Services – Salaries				\$98,562.24
200 <u>Personnel Services – Employee Benefits</u>				
210 Group Insurance – Contracted Provider				36,112.08
220 Social Security Contributions				7,459.10
230 PSERS Retirement Contributions				32,949.42
250 Unemployment Compensation				160.00
260 Workers' Compensation				640.69
Total Personnel Services – Employee Benefits				\$77,321.29
300 <u>Purchased Professional and Technical Services</u>				
340 Technical Services				118,511.47
390 Other Purchased Professional and Technical Services				3,400.00
Total Purchased Professional and Technical Services				\$121,911.47
400 <u>Purchased Property Services</u>				
430 Repairs and Maintenance Services				6,405.80
Total Purchased Property Services				\$6,405.80
600 <u>Supplies</u>				
610 General Supplies				111,961.05
Total Supplies				\$111,961.05
700 <u>Property</u>				
758 Capitalized Technology Software - Original				8,719.90
Total Property				\$8,719.90
Total 2800 Support Services – Central				\$424,881.75

LEA : 127045653      New Brighton Area SD

Printed 1/23/2020 9:58:41 AM

General Fund (10)				
2840 Data Processing Services	<u>Elementary</u>	<u>Secondary</u>	<u>Federal</u>	<u>Total</u>
100 <u>Personnel Services – Salaries</u>				
100 Personnel Services – Salaries				98,562.24
Total Personnel Services – Salaries				\$98,562.24
200 <u>Personnel Services – Employee Benefits</u>				
210 Group Insurance – Contracted Provider				36,112.08
220 Social Security Contributions				7,459.10
230 PSERS Retirement Contributions				32,949.42
250 Unemployment Compensation				160.00
260 Workers' Compensation				640.69
Total Personnel Services – Employee Benefits				\$77,321.29
300 <u>Purchased Professional and Technical Services</u>				
340 Technical Services				118,511.47
390 Other Purchased Professional and Technical Services				3,400.00
Total Purchased Professional and Technical Services				\$121,911.47
400 <u>Purchased Property Services</u>				
430 Repairs and Maintenance Services				6,405.80
Total Purchased Property Services				\$6,405.80
600 <u>Supplies</u>				
610 General Supplies				111,961.05
Total Supplies				\$111,961.05
700 <u>Property</u>				
758 Capitalized Technology Software - Original				8,719.90
Total Property				\$8,719.90
Total 2840 Data Processing Services				\$424,881.75

LEA : 127045653     New Brighton Area SD

Printed 1/23/2020 9:58:41 AM

General Fund (10)

2900 Other Support Services	<u>Elementary</u>	<u>Secondary</u>	<u>Federal</u>	<u>Total</u>
500 <u>Other Purchased Services</u>				
595 IU Payments By Withholding				6,954.53
Total Other Purchased Services				\$6,954.53
800 <u>Other Objects</u>				
899 Pass-Through Funds				9,595.68
Total Other Objects				\$9,595.68
Total 2900 Other Support Services				\$16,550.21



LEA : 127045653     New Brighton Area SD

Printed 1/23/2020 9:58:41 AM

General Fund (10)

2910 Support Services Not Listed Elsewhere In the 2000 Series

Elementary                      Secondary                      Federal                      Total

500 <u>Other Purchased Services</u>				
595 IU Payments By Withholding				6,954.53
Total Other Purchased Services				\$6,954.53
Total 2910 Support Services Not Listed Elsewhere In the 2000 Series				\$6,954.53

LEA : 127045653     New Brighton Area SD

Printed 1/23/2020 9:58:41 AM

General Fund (10)				
2990 Pass-Through Funds	<u>Elementary</u>	<u>Secondary</u>	<u>Federal</u>	<u>Total</u>
800 <u>Other Objects</u>				
899 Pass-Through Funds				9,595.68
Total Other Objects				\$9,595.68
Total 2990 Pass-Through Funds				\$9,595.68

LEA : 127045653      New Brighton Area SD

Printed 1/23/2020 9:58:47 AM

<b>General Fund (10)</b>	
<b>3000 Operation of Non-Instructional Services</b>	<b><u>Total</u></b>
<b>100 <u>Personnel Services – Salaries</u></b>	
100 Personnel Services – Salaries	303,401.10
<b>Total Personnel Services – Salaries</b>	<b>\$303,401.10</b>
<b>200 <u>Personnel Services – Employee Benefits</u></b>	
210 Group Insurance – Contracted Provider	962.88
220 Social Security Contributions	22,707.51
230 PSERS Retirement Contributions	84,017.55
250 Unemployment Compensation	1,196.87
260 Workers' Compensation	1,981.90
<b>Total Personnel Services – Employee Benefits</b>	<b>\$110,866.71</b>
<b>300 <u>Purchased Professional and Technical Services</u></b>	
310 Official / Administrative Services	500.00
330 Other Professional Services	47,175.00
350 Security / Safety Services	12,562.50
390 Other Purchased Professional and Technical Services	12,784.01
<b>Total Purchased Professional and Technical Services</b>	<b>\$73,021.51</b>
<b>400 <u>Purchased Property Services</u></b>	
430 Repairs and Maintenance Services	35,780.15
440 Rentals	2,675.40
490 Other Purchased Property Services	7,803.43
<b>Total Purchased Property Services</b>	<b>\$46,258.98</b>
<b>500 <u>Other Purchased Services</u></b>	
510 Student Transportation Services	37,706.95
520 Insurance – General	11,300.00
580 Travel	(884.50)
<b>Total Other Purchased Services</b>	<b>\$48,122.45</b>
<b>600 <u>Supplies</u></b>	
610 General Supplies	80,409.07
<b>Total Supplies</b>	<b>\$80,409.07</b>
<b>800 <u>Other Objects</u></b>	
810 Dues and Fees	9,374.00
860 Grants To Municipal and Community Service Organizations	20,000.00
890 Miscellaneous Expenditures	3,900.09
<b>Total Other Objects</b>	<b>\$33,274.09</b>
<b>Total 3000 Operation of Non-Instructional Services</b>	<b>\$695,353.91</b>

LEA : 127045653      New Brighton Area SD

Printed 1/23/2020 9:58:47 AM

General Fund (10)				
3200 Student Activities	<u>Elementary</u>	<u>Secondary</u>	<u>Federal</u>	<u>Total</u>
100 <u>Personnel Services – Salaries</u>				
100 Personnel Services – Salaries				221,423.61
Total Personnel Services – Salaries				\$221,423.61
200 <u>Personnel Services – Employee Benefits</u>				
220 Social Security Contributions				17,053.72
230 PSERS Retirement Contributions				66,034.39
250 Unemployment Compensation				807.65
260 Workers' Compensation				1,449.12
Total Personnel Services – Employee Benefits				\$85,344.88
300 <u>Purchased Professional and Technical Services</u>				
310 Official / Administrative Services				500.00
330 Other Professional Services				47,175.00
350 Security / Safety Services				12,562.50
390 Other Purchased Professional and Technical Services				7,700.00
Total Purchased Professional and Technical Services				\$67,937.50
400 <u>Purchased Property Services</u>				
430 Repairs and Maintenance Services				16,621.74
440 Rentals				2,675.40
Total Purchased Property Services				\$19,297.14
500 <u>Other Purchased Services</u>				
510 Student Transportation Services				37,706.95
520 Insurance – General				11,300.00
580 Travel				(884.50)
Total Other Purchased Services				\$48,122.45
600 <u>Supplies</u>				
610 General Supplies				76,414.98
Total Supplies				\$76,414.98
800 <u>Other Objects</u>				
810 Dues and Fees				9,374.00
890 Miscellaneous Expenditures				3,900.09
Total Other Objects				\$13,274.09
Total 3200 Student Activities				\$531,814.65

LEA : 127045653      New Brighton Area SD

Printed 1/23/2020 9:58:47 AM

<b>General Fund (10)</b>				
<b>3300 Community Services</b>	<b><u>Elementary</u></b>	<b><u>Secondary</u></b>	<b><u>Federal</u></b>	<b><u>Total</u></b>
<b>100 <u>Personnel Services – Salaries</u></b>				
100 Personnel Services – Salaries				81,977.49
<b>Total Personnel Services – Salaries</b>				<b>\$81,977.49</b>
<b>200 <u>Personnel Services – Employee Benefits</u></b>				
210 Group Insurance – Contracted Provider				962.88
220 Social Security Contributions				5,653.79
230 PSERS Retirement Contributions				17,983.16
250 Unemployment Compensation				389.22
260 Workers' Compensation				532.78
<b>Total Personnel Services – Employee Benefits</b>				<b>\$25,521.83</b>
<b>300 <u>Purchased Professional and Technical Services</u></b>				
390 Other Purchased Professional and Technical Services				5,084.01
<b>Total Purchased Professional and Technical Services</b>				<b>\$5,084.01</b>
<b>400 <u>Purchased Property Services</u></b>				
430 Repairs and Maintenance Services				19,158.41
490 Other Purchased Property Services				7,803.43
<b>Total Purchased Property Services</b>				<b>\$26,961.84</b>
<b>600 <u>Supplies</u></b>				
610 General Supplies			500.00	3,994.09
<b>Total Supplies</b>			<b>\$500.00</b>	<b>\$3,994.09</b>
<b>800 <u>Other Objects</u></b>				
860 Grants To Municipal and Community Service Organizations				20,000.00
<b>Total Other Objects</b>				<b>\$20,000.00</b>
<b>Total 3300 Community Services</b>			<b>\$500.00</b>	<b>\$163,539.26</b>

General Fund (10)

4000 Facilities Acquisition, Construction and Improvement Services		<u>Total</u>
700 <u>Property</u>		
752 Capital Equipment – Original and Additional	5,237.00	
Total Property	\$5,237.00	
Total 4000 Facilities Acquisition, Construction and Improvement Services	\$5,237.00	

LEA : 127045653     New Brighton Area SD

Printed 1/23/2020 9:58:52 AM

General Fund (10)

4600 Existing Building Improvement Services	<u>Elementary</u>	<u>Secondary</u>	<u>Federal</u>	<u>Total</u>
700 <u>Property</u>				
752 Capital Equipment – Original and Additional				5,237.00
Total Property				\$5,237.00
Total 4600 Existing Building Improvement Services				\$5,237.00

LEA : 127045653     New Brighton Area SD

Printed 1/23/2020 9:58:58 AM

General Fund (10)	
5000 Other Expenditures and Financing Uses	<u>Total</u>
800 <u>Other Objects</u>	
830 Interest	101,272.69
Total Other Objects	\$101,272.69
900 <u>Other Uses of Funds</u>	
910 Redemption of Principal	1,648,339.73
Total Other Uses of Funds	\$1,648,339.73
Total 5000 Other Expenditures and Financing Uses	\$1,749,612.42



General Fund (10)

5100 Debt Service / Other Expenditures and Financing Uses	<u>Elementary</u>	<u>Secondary</u>	<u>Federal</u>	<u>Total</u>
800 <u>Other Objects</u>				
830 Interest				101,272.69
Total Other Objects				\$101,272.69
900 <u>Other Uses of Funds</u>				
910 Redemption of Principal				1,648,339.73
Total Other Uses of Funds				\$1,648,339.73
Total 5100 Debt Service / Other Expenditures and Financing Uses				\$1,749,612.42

General Fund (10)				
5110 Debt Service	<u>Elementary</u>	<u>Secondary</u>	<u>Federal</u>	<u>Total</u>
800 <u>Other Objects</u>				
830 Interest				101,272.69
Total Other Objects				\$101,272.69
900 <u>Other Uses of Funds</u>				
910 Redemption of Principal				1,648,339.73
Total Other Uses of Funds				\$1,648,339.73
Total 5110 Debt Service				\$1,749,612.42

Other Capital Projects Fund (39)

4000 Facilities Acquisition, Construction and Improvement Services

Total

300 Purchased Professional and Technical Services

390 Other Purchased Professional and Technical Services	2,258,268.00
---	--------------

<b>Total Purchased Professional and Technical Services</b>	<b>\$2,258,268.00</b>
--	-----------------------

<b>Total 4000 Facilities Acquisition, Construction and Improvement Services</b>	<b>\$2,258,268.00</b>
---	-----------------------

LEA : 127045653     New Brighton Area SD

Printed 1/23/2020 9:58:54 AM

Other Capital Projects Fund (39)

4600 Existing Building Improvement Services

<u>Elementary</u>	<u>Secondary</u>	<u>Federal</u>	<u>Total</u>
-------------------	------------------	----------------	--------------

300 Purchased Professional and Technical Services

390 Other Purchased Professional and Technical Services			2,258,268.00
---	--	--	--------------

<b>Total Purchased Professional and Technical Services</b>			<b>\$2,258,268.00</b>
--	--	--	-----------------------

<b>Total 4600 Existing Building Improvement Services</b>			<b>\$2,258,268.00</b>
--	--	--	-----------------------

LEA : 127045653     New Brighton Area SD

Printed 1/23/2020 9:58:59 AM

Other Capital Projects Fund (39)

5000 Other Expenditures and Financing Uses

Total

800 <u>Other Objects</u>	
830 Interest	14,529.00
Total Other Objects	\$14,529.00
Total 5000 Other Expenditures and Financing Uses	\$14,529.00

Other Capital Projects Fund (39)

5100 Debt Service / Other Expenditures and Financing Uses

Elementary

Secondary

Federal

Total

800 Other Objects

830 Interest				14,529.00
--------------	--	--	--	-----------

Total Other Objects				\$14,529.00
---------------------	--	--	--	-------------

Total 5100 Debt Service / Other Expenditures and Financing Uses				\$14,529.00
---	--	--	--	-------------

LEA : 127045653    New Brighton Area SD

Printed 1/23/2020 9:58:59 AM

Other Capital Projects Fund (39)

5110 Debt Service	<u>Elementary</u>	<u>Secondary</u>	<u>Federal</u>	<u>Total</u>
800 <u>Other Objects</u>				
830 Interest				14,529.00
Total Other Objects				\$14,529.00
Total 5110 Debt Service				\$14,529.00

	<u>General Fund(10)</u>	<u>Public Purpose Trust(27)</u>	<u>Other Compt Approved (28)</u>	<u>Athletic / Activity(29)</u>	<u>Capital Reserve (690. 1850)(31)</u>
<b>1000 <u>Instruction</u></b>					
1100 Regular Programs - Elementary / Secondary	10,516,116.66				
1200 Special Programs - Elementary / Secondary	3,243,992.57				
1300 Vocational Education	1,285,995.34				
1400 Other Instructional Programs - Elementary / Secondary	120,150.20				
1500 Nonpublic School Programs	7,045.03				
<b>Total Instruction</b>	<b>\$15,173,299.80</b>				
<b>2000 <u>Support Services</u></b>					
2100 Support Services - Students	838,501.52				
2200 Support Services - Instructional Staff	504,215.51				
2300 Support Services - Administration	1,394,119.62				
2400 Support Services - Pupil Health	261,971.25				
2500 Support Services - Business	314,598.61				
2600 Operation and Maintenance of Plant Services	2,318,400.10				
2700 Student Transportation Services	1,125,017.46				
2800 Support Services - Central	424,881.75				
2900 Other Support Services	16,550.21				
<b>Total Support Services</b>	<b>\$7,198,256.03</b>				
<b>3000 <u>Operation of Non-Instructional Services</u></b>					
3200 Student Activities	531,814.65				
3300 Community Services	163,539.26				
<b>Total Operation of Non-Instructional Services</b>	<b>\$695,353.91</b>				
<b>4000 <u>Facilities Acquisition, Construction and Improvement Services</u></b>					
4600 Existing Building Improvement Services	5,237.00				
<b>Total Facilities Acquisition, Construction and Improvement</b>	<b>\$5,237.00</b>				
<b>5000 <u>Other Expenditures and Financing Uses</u></b>					
5100 Debt Service / Other Expenditures and Financing Uses	1,749,612.42				
<b>Total Other Expenditures and Financing Uses</b>	<b>\$1,749,612.42</b>				
<b>TOTAL ACTUAL EXPENDITURES &amp; OTHER FINANCING USES</b>	<b>\$24,821,759.16</b>				



LEA : 127045653     New Brighton Area SD

Printed 1/23/2020 9:59:14 AM

	<u>Capital Reserve (1431)(32)</u>	<u>Other Capital Projects Fund(39)</u>	<u>Debt Service(40)</u>	<u>Permanent(90)</u>	<u>Total</u>
<b>1000 <u>Instruction</u></b>					
1100 Regular Programs - Elementary / Secondary					10,516,116.66
1200 Special Programs - Elementary / Secondary					3,243,992.57
1300 Vocational Education					1,285,995.34
1400 Other Instructional Programs - Elementary / Secondary					120,150.20
1500 Nonpublic School Programs					7,045.03
<b>Total Instruction</b>					<b>\$15,173,299.80</b>
<b>2000 <u>Support Services</u></b>					
2100 Support Services - Students					838,501.52
2200 Support Services - Instructional Staff					504,215.51
2300 Support Services - Administration					1,394,119.62
2400 Support Services - Pupil Health					261,971.25
2500 Support Services - Business					314,598.61
2600 Operation and Maintenance of Plant Services					2,318,400.10
2700 Student Transportation Services					1,125,017.46
2800 Support Services - Central					424,881.75
2900 Other Support Services					16,550.21
<b>Total Support Services</b>					<b>\$7,198,256.03</b>
<b>3000 <u>Operation of Non-Instructional Services</u></b>					
3200 Student Activities					531,814.65
3300 Community Services					163,539.26
<b>Total Operation of Non-Instructional Services</b>					<b>\$695,353.91</b>
<b>4000 <u>Facilities Acquisition, Construction and Improvement Services</u></b>					
4600 Existing Building Improvement Services		2,258,268.00			2,263,505.00
<b>Total Facilities Acquisition, Construction and Improvement</b>		<b>\$2,258,268.00</b>			<b>\$2,263,505.00</b>
<b>5000 <u>Other Expenditures and Financing Uses</u></b>					
5100 Debt Service / Other Expenditures and Financing Uses		14,529.00			1,764,141.42
<b>Total Other Expenditures and Financing Uses</b>		<b>\$14,529.00</b>			<b>\$1,764,141.42</b>
<b>TOTAL ACTUAL EXPENDITURES &amp; OTHER FINANCING USES</b>		<b>\$2,272,797.00</b>			<b>\$27,094,556.16</b>

LEA : 127045653     New Brighton Area SD

Printed 1/23/2020 9:59:23 AM

PSERS Salary Data (Salary Data should relate to the General Fund only)

Amount	Description	Amount
	Total Salary Base for salaries subject to PSERS withholding	10,336,884.85
	Total Federally Funded salaries subject to PSERS withholding	346,280.00

Title I Expenditure Data

Amount	Description	Amount
	Expenditures Funded with Current Title I Funds	499,617.78
	Expenditures Funded with Carry over Title I Funds	
Total	Title I Expenditure Data	\$499,617.78

Benefits for Staff Relative to Collective Bargaining Agreements

	OBJECT	COVERED	NOT COVERED	TOTAL
10 General Fund	No Self Insurance data to report			
	211 Medical Insurance	2,043,754.00	75,326.00	2,119,080.00
	212 Dental Insurance	81,353.77	1,888.68	83,242.45
	215 Eye Care Insurance	19,085.91	600.00	19,685.91
	216 Prescription Insurance			
	271 Self-Insurance Medical Benefits			
	272 Self-Insurance Dental Benefits			
	275 Self-Insurance Eye Care Benefits			
	276 Self-Insurance Prescription Benefits			
	FUND TOTAL	\$2,144,193.68	\$77,814.68	\$2,222,008.36
50 Enterprise Fund	No Self Insurance data to report			
	211 Medical Insurance			
	212 Dental Insurance			
	215 Eye Care Insurance			
	216 Prescription Insurance			
	271 Self-Insurance Medical Benefits			
	272 Self-Insurance Dental Benefits			
	275 Self-Insurance Eye Care Benefits			
	276 Self-Insurance Prescription Benefits			
	FUND TOTAL			
60 Internal Service Fund	No Self Insurance data to report			
	211 Medical Insurance			
	212 Dental Insurance			
	215 Eye Care Insurance			
	216 Prescription Insurance			
	271 Self-Insurance Medical Benefits			
	272 Self-Insurance Dental Benefits			
	275 Self-Insurance Eye Care Benefits			
	276 Self-Insurance Prescription Benefits			
	FUND TOTAL			
Total of All Funds		\$2,144,193.68	\$77,814.68	\$2,222,008.36

LEA : 127045653     New Brighton Area SD

Printed 1/23/2020 9:59:29 AM

Function	Special Education (Prior Year)	Nonspecial Education (Prior Year)	Total (Prior Year)	Special Education (Current Year)	Nonspecial Education (Current Year)	Total (Current Year)
2120 Guidance Services	46,296.00	416,663.98	462,959.98	47,019.21	423,173.19	470,192.40
2140 Psychological Services	71,866.65	7,985.18	79,851.83	86,730.12	9,636.68	96,366.80
2150 Speech Pathology and Audiology Services	78,961.30	19,740.32	98,701.62	82,177.55	20,544.38	102,721.93
2160 Social Work Services	16,572.42	149,151.72	165,724.14	16,922.04	152,298.35	169,220.39
2260 Instruction and Curriculum Development Services	177,057.83	118,038.55	295,096.38	162,230.33	108,153.54	270,383.87
2350 Legal and Accounting Services	4,997.28	19,989.12	24,986.40	5,198.10	20,792.40	25,990.50
2420 Medical Services	54,460.50	163,381.50	217,842.00	64,997.82	194,993.43	259,991.25
2440 Nursing Services						
2700 Student Transportation Services	444,505.20	613,840.51	1,058,345.71	425,609.66	699,407.80	1,125,017.46
Total	\$894,717.18	\$1,508,790.88	\$2,403,508.06	\$890,884.83	\$1,628,999.77	\$2,519,884.60

LEA : 127045653     New Brighton Area SD

Printed 1/23/2020 9:59:31 AM

(PRINCIPAL AMOUNTS ONLY)

**GOVERNMENTAL FUNDS/ ACTIVITIES**

	Short-Term Borrowing	General Obligation Bonds/Notes	Authority Building Obligations	Other Long-Term Debt	Other Post- Employment Benefits (OPEB)	Compensated Absences	Net Pension Liability	Total
1. Debt at Beginning of Fiscal Year		2,851,000.00		2,241,064.45	1,220,308.00		36,399,000.00	42,711,372.45
2. Additional Debt Incurred During Year		2,405,000.00						2,405,000.00
3. Retirements and Repayments		1,494,000.00		142,080.35	71,268.00		1,499,000.00	3,206,348.35
4. Debt at End of Fiscal Year		3,762,000.00		2,098,984.10	1,149,040.00		34,900,000.00	41,910,024.10
5. Accreted Interest at End Of Fiscal Year								
6. Total Debt and Accreted Interest		3,762,000.00		2,098,984.10	1,149,040.00		34,900,000.00	41,910,024.10
7. Current Portion P&I - Due within 1 year		1,494,106.86		212,556.00				1,706,662.86
8. Interest Paid during current fiscal year		44,195.56		66,281.65				110,477.21

(PRINCIPAL AMOUNTS ONLY)

**PROPRIETARY FUNDS**

- 1. Debt at Beginning of Fiscal Year
- 2. Additional Debt Incurred During Year
- 3. Retirements and Repayments
- 4. Debt at End of Fiscal Year
- 5. Accreted Interest at End Of Fiscal Year
- 6. Total Debt and Accreted Interest
- 7. Current Portion P&I - Due within 1 year
- 8. Interest Paid during current fiscal year

LEA : 127045653    New Brighton Area SD

Total Principal and Interest Payments Made by Your School - All Funds

Function	Fund		Principal (910)	Principal (920)	Interest (830)	Total (Principal +Interest)	Misc Other Uses (990)
5110	10	General Fund	1,648,339.73		101,272.69	1,749,612.42	
5110	20	Special Revenue Funds					
5110	30	Capital Projects Funds			14,529.00	14,529.00	
5110	40	Debt Service Fund					
5110	90	Permanent Fund					
5120	10	General Fund					
5120	20	Special Revenue Funds					
5120	30	Capital Projects Funds					
5120	40	Debt Service Fund					
Total Debt Payments - Governmental Funds			\$1,648,339.73		\$115,801.69	\$1,764,141.42	

Function	Fund		Principal (910)	Principal (920)	Interest (830)	Total (Principal +Interest)
5110	50	Enterprise Fund				
5110	60	Internal Service Fund				
5120	50	Enterprise Fund				
5120	60	Internal Service Fund				
Total Debt Payments - Proprietary Funds						

LEA : 127045653     New Brighton Area SD

Printed 1/23/2020 9:59:31 AM

**Debt Details**  
**Governmental Funds/ Activities**

Debt Category	Debt Issue Date (MM/YYYY)	Principal Amounts Only				Current Portion Due Within One Year (Principal and Interest)	Interest Paid During Fiscal Year
		Debt at Beginning of Fiscal Year	Additions	Reductions / Repayments	Debt at End of Fiscal Year		
General Obligation Bonds/Notes – CIB	11/2018		2,405,000.00		2,405,000.00	127,540.01	14,529.16
General Obligation Bonds/Notes – CIB	08/2016	2,851,000.00		1,494,000.00	1,357,000.00	1,366,566.85	29,666.40
Extended Term Financing Agreements		2,241,064.45		142,080.35	2,098,984.10	212,556.00	66,281.65
Other Post-Employment Benefits (OPEB)		1,220,308.00		71,268.00	1,149,040.00		
Net Pension Liability		36,399,000.00		1,499,000.00	34,900,000.00		
<b>Totals for Debt Entered:</b>		<b>\$42,711,372.45</b>	<b>\$2,405,000.00</b>	<b>\$3,206,348.35</b>	<b>\$41,910,024.10</b>	<b>\$1,706,662.86</b>	<b>\$110,477.21</b>

LEA : 127045653     New Brighton Area SD

Printed 1/23/2020 9:59:34 AM

**General Fund (10)**

Section 1: Tuition/Purchased Services as Reported within Expenditure Detail	Amount
Tuition Reported in General Fund Expenditures 1000-560	2,125,277.55
Purchased Services in General Fund Expenditures 1000-594 and 1000-597	1,174.45
<b>Section 1 Total</b>	<b>\$2,126,452.00</b>

Section 2: Tuition Paid to Institution Types During Fiscal Year	Tuition Paid For Nonspecial Education	Tuition Paid For Special Education	Total
1 1306 Institutions			
2 Institutionalized Children's Programs		1,174.45	1,174.45
3 Juveniles Incarcerated in Adult Facilities			
4 Residential Treatment Facilities			
5 Other Local Education Agencies	60,719.20	57,931.42	118,650.62
6 Brick and Mortar Charter Schools	450,911.74	99,453.08	550,364.82
7 Cyber Charter Schools	325,190.00	241,538.33	566,728.33
8 Career and Technology Centers	486,507.04		486,507.04
9 Approved Private Schools		136,218.59	136,218.59
10 PA Chartered Schools for the Deaf and Blind		41,366.51	41,366.51
11 Private Residential Rehabilitative Institutions			
12 Juvenile Detention Centers			
13 Special Program Jointures			
14 Other Tuition Not Included Elsewhere In This Section	6,008.86	219,432.78	225,441.64
<b>Section 2 Total</b>	<b>\$1,329,336.84</b>	<b>\$797,115.16</b>	<b>\$2,126,452.00</b>



LEA : 127045653      New Brighton Area SD

Printed 1/23/2020 9:59:36 AM

Food Service / Cafeteria Operations Fund (51)

3000 Operation of Non-Instructional Services

Total

500	<u>Other Purchased Services</u>	
570	Food Service Management	878,605.10
Total Other Purchased Services		\$878,605.10
600	<u>Supplies</u>	
610	General Supplies	8,319.15
630	Food	61,102.71
Total Supplies		\$69,421.86
700	<u>Property</u>	
740	Depreciation	5,515.00
Total Property		\$5,515.00
800	<u>Other Objects</u>	
810	Dues and Fees	296.16
820	Claims and Judgments Against the LEA	2,775.00
Total Other Objects		\$3,071.16
Total 3000 Operation of Non-Instructional Services		\$956,613.12

LEA : 127045653     New Brighton Area SD

Printed 1/23/2020 9:59:36 AM

Food Service / Cafeteria Operations Fund (51)

3100 Food Services	<u>Elementary</u>	<u>Secondary</u>	<u>Federal</u>	<u>Total</u>
500 <u>Other Purchased Services</u>				
570 Food Service Management				878,605.10
Total Other Purchased Services				\$878,605.10
600 <u>Supplies</u>				
610 General Supplies				8,319.15
630 Food				61,102.71
Total Supplies				\$69,421.86
700 <u>Property</u>				
740 Depreciation				5,515.00
Total Property				\$5,515.00
800 <u>Other Objects</u>				
810 Dues and Fees				296.16
820 Claims and Judgments Against the LEA				2,775.00
Total Other Objects				\$3,071.16
Total 3100 Food Services				\$956,613.12

	<u>Food Service(51)</u>	<u>Child Care Operations(52)</u>	<u>Other Enterprise(58)</u>	<u>Internal Service(60)</u>	<u>Total</u>
<b>3000 <u>Operation of Non-Instructional Services</u></b>					
3100 Food Services	956,613.12				956,613.12
<b>Total Operation of Non-Instructional Services</b>	<b>\$956,613.12</b>				<b>\$956,613.12</b>
<b>TOTAL ACTUAL EXPENDITURES &amp; OTHER FINANCING USES</b>	<b>\$956,613.12</b>				<b>\$956,613.12</b>

LEA : 127045653    New Brighton Area SD

Printed 1/23/2020 9:59:48 AM

Fund	School	School Number	Local Personnel	Local Nonpersonnel	State Personnel	State Nonpersonnel	Federal Personnel	Federal Nonpersonnel	Total	Explanation
10										
	New Brighton Area El Sch	6720	1,988,943.00	1,185,847.00	4,038,157.00	3,282,537.00	577,282.00	181,834.00	11,254,600.00	
	New Brighton Area HS	695	1,696,681.00	858,826.00	3,789,255.00	1,311,515.00		80,310.00	7,736,587.00	
	New Brighton Area MS	694	1,167,092.00	498,840.00	2,606,505.00	1,443,259.00		114,729.00	5,830,425.00	
Total			4,852,716.00	2,543,513.00	10,433,917.00	6,037,311.00	577,282.00	376,873.00	24,821,612.00	