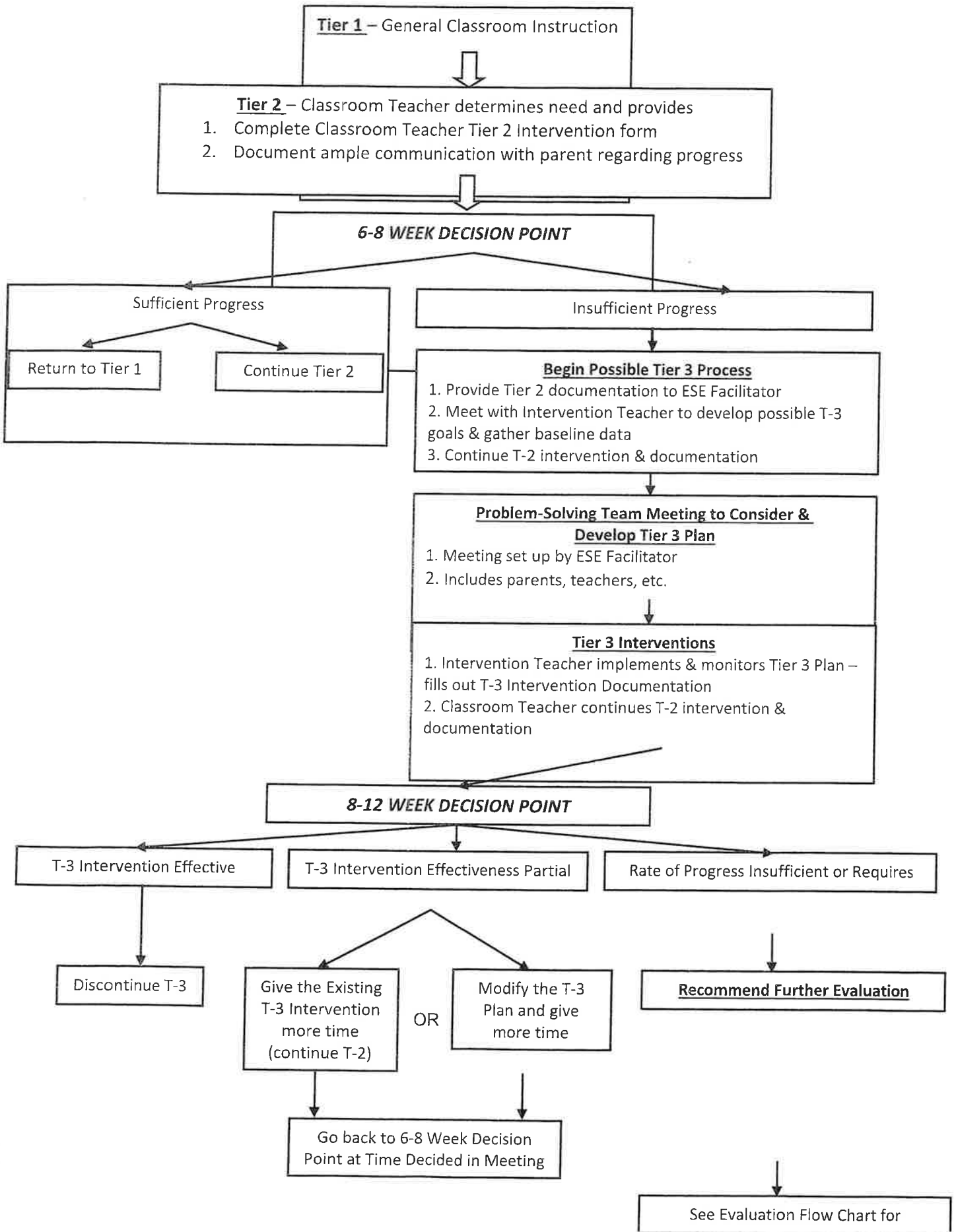


LWCS MTSS Flow Chart for Classroom Teachers



LWCS Evaluation Flow Chart

Tier 3 Intervention has been implemented with fidelity and the problem-solving team has determined the rate of

Recommend Further Evaluation

1. Continue T-2 and T-3 interventions & documentation
2. Parent signs consent for evaluation
3. School Psychologist conducts further evaluation & writes report
4. ESE Facilitator gathers information & documentation

Eligibility Meeting for ESE Services

1. ESE Facilitator sets up the meeting – all members of problem-solving team attend along with ESE Director
2. If determined eligible, ESE teacher writes initial IEP at the meeting

Student Begins Receiving ESE Services

1. Classroom Teacher continues Tier 2 Interventions (form no longer required) and maintains primary responsibility for student learning for inclusion students
2. Intervention Teacher discontinues T-3 Interventions