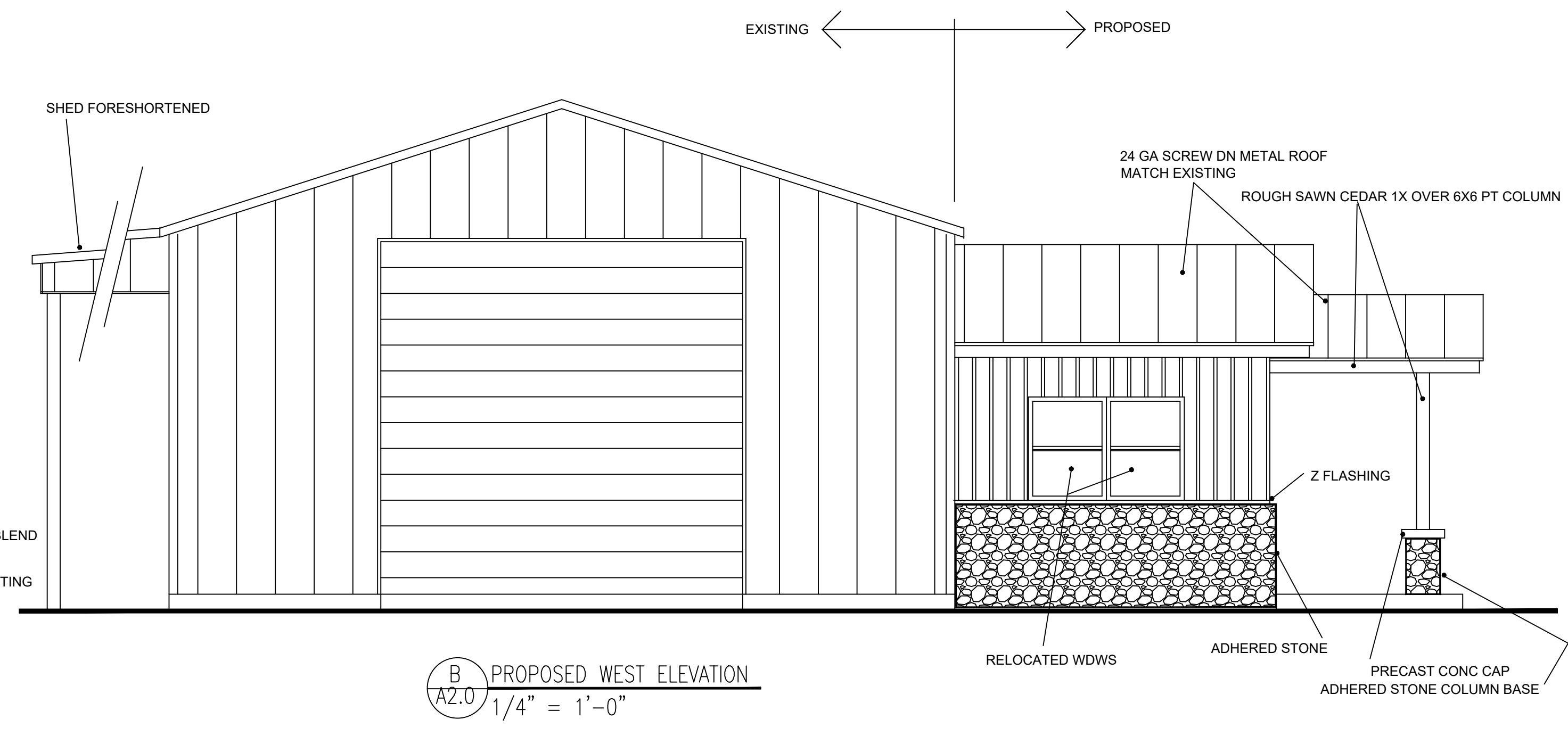
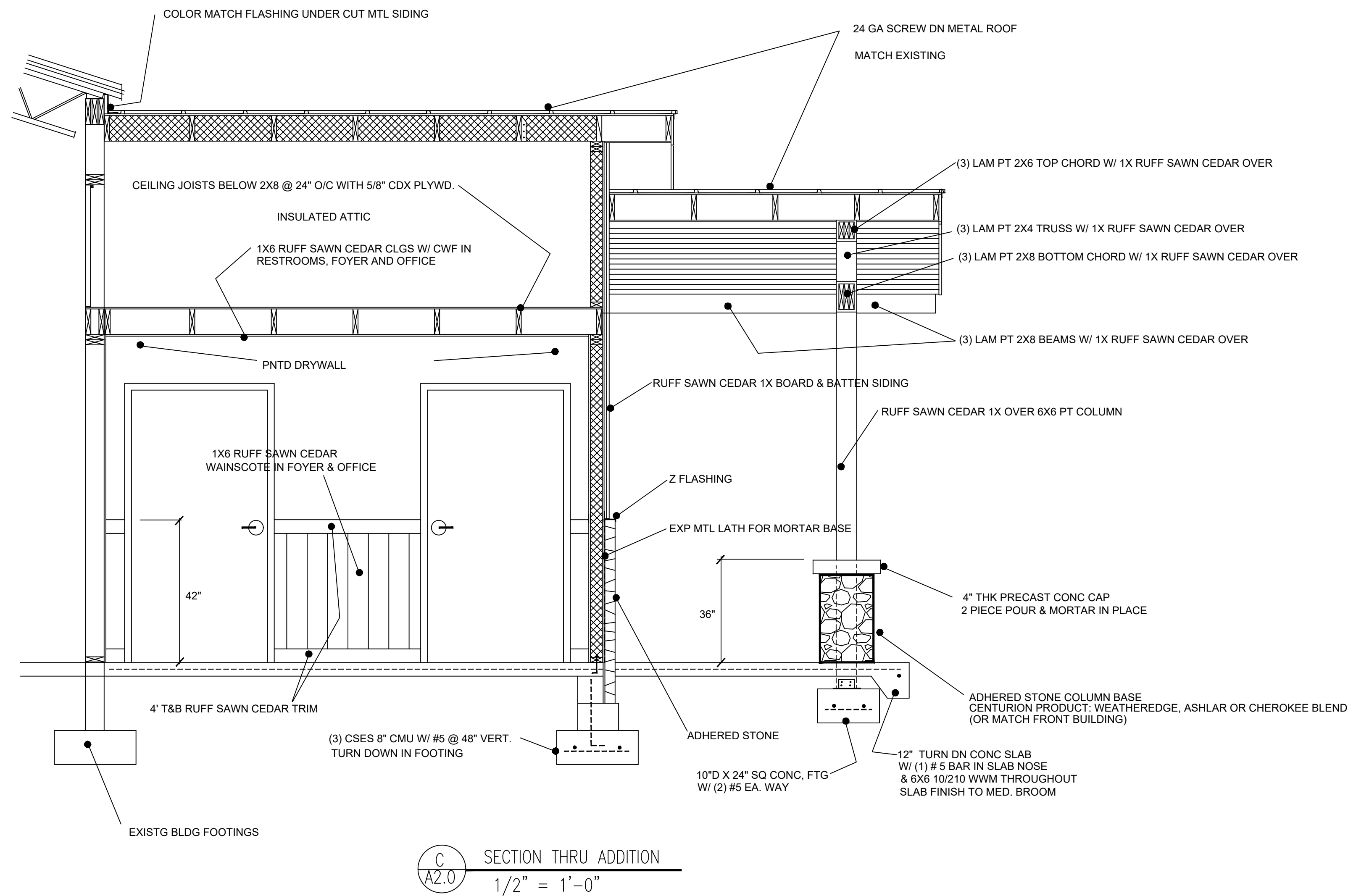


A
A2.0
PROPOSED SOUTH ELEVATION
1/4" = 1'-0"



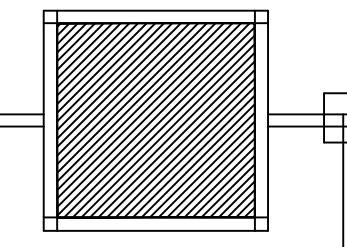
B
A2.0
PROPOSED WEST ELEVATION
1/4" = 1'-0"



C
A2.0
SECTION THRU ADDITION
1/2" = 1'-0"

STATE OF TN ADOPTED CODES:

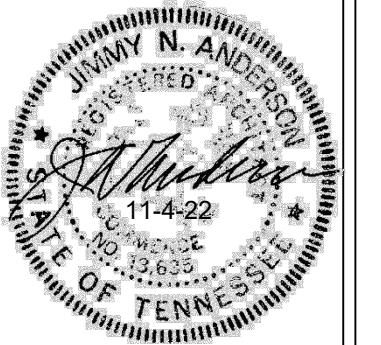
- 2018 INTERNATIONAL BUILDING CODE
- 2018 INTERNATIONAL FUEL GAS CODE
- 2018 INTERNATIONAL MECHANICAL CODE
- 2018 NATIONAL ELECTRICAL CODE NFPA 70
- 2009 INTERNATIONAL ENERGY CONSERVATION CODE
- 2018 INTERNATIONAL FIRE CODE
- 2012 INTERNATIONAL EXISTING BUILDING CODE
- 2010 ADA STANDARDS FOR ACCESSIBLE DESIGN



JIMMY NEIL ANDERSON ARCHITECT

1 ANDERSON TRAIL
CLIFTON, TN 38425
(731) 394-6655
JIMA656@HOTMAIL.COM

THIS DRAWING AND THE DESIGN SHOWN IS THE PROPERTY OF THE ARCHITECT. THE REPRODUCTION OR USE OF THIS DRAWING WITHOUT THE ARCHITECT'S WRITTEN CONSENT IS PROHIBITED AND ANY INFRINGEMENT IS SUBJECT TO LEGAL ACTION.



REVISED

WAYNE COUNTY EXTENDED LEARNING FACILITY
1 PARK LANE; COLLINWOOD, TN 38450

A2.0