

RADON INSPECTION
The Clatskanie Elementary School
815 S. Nehalem Street
Clatskanie, Oregon 97016

Prepared For:

Paul Simmons, Facilities Manager
Clatskanie SD 6J
815 S. Nehalem Street
Clatskanie, Oregon 97016

EIS Job No. 2019087.Clatskanie Elementary school radon

Prepared By:

Charles A. Spear
Environmental Professional
AHERA Certification #IR-19-2439A
Environmental Inspection Services
11981 Fargo Road
Aurora, Oregon 97002
Cell # (503) 680-6398
E MAIL: charles_a_spear@yahoo.com

Charles A. Spear

Charles A. Spear, Environmental Professional

October 15, 2019



EIS
ENVIRONMENTAL INSPECTION SERVICES



TABLE OF CONTENTS

<u>DESCRIPTION</u>	<u>PAGE NO.</u>
1.0 EXECUTIVE SUMMARY.....	1-2
2.0 RADON ENVIRONMENTAL RISK	3
3.0 RADON DESCRIPTION	3
4.0 RADON CHARACTERISTICS	4
5.0 RADON TESTING ACTIVITY	4-5
6.0 RADON TEST RESULT TABLE	5-6
7.0 RADON MEASUREMENT RISK ASSESSMENT	6
8.0 RADON LABORATORY ANALYSIS	7
9.0 QUALITY ASSURANCE/QUALITY CONTROL	7-8
10.0 RECOMMENDATIONS & CONCLUSIONS	9
11.0 LIMITATIONS	10

APPENDIX 1.0
RADON ANALYTICAL TEST RESULTS

APPENDIX 2.0
CHAIN'S OF CUSTODY (COC'S)

APPENDIX 3.0
SCHOOL SAMPLING FLOOR PLAN

APPENDIX 4.0
RADON REGULATION

APPENDIX 5.0
CONSULTANT RESUME

1.0 EXECUTIVE SUMMARY

October 15, 2019

EIS JOB No. 2019087.Clatskanie Elementary School radon

Paul Simmons, Facilities Manager
Clatskanie SD 6J
815 S. Nehalem Street
Clatskanie, Oregon 97016

RE: Short term radon testing of The Clatskanie Elementary school
Buildings located at 815 S. Nehalem Street in Clatskanie,
Oregon 97016

Dear Mr. Simmons,

This letter summarizes the finding of a short term (48-72 hour) radon sampling test episode conducted at the subject school property known as the Clatskanie Elementary School buildings to include the Cardiff Building located at 815 S. Nehalem Street in Clatskanie, Oregon between Friday, October 4, 2019 and Monday, October 7, 2019. The samples were received by PRO-LAB on Friday, October 11, 2019, analyzed by PRO-LAB laboratory on Friday, October 11, 2019, and results were reported to EIS on Tuesday, October 15, 2019. The radon sampling episode was conducted by Charles A. Spear, field representative of Environmental Inspection Services (EIS) with a total custodian escort by Paul Simmons through the entire Clatskanie Elementary school buildings. No elevated radon considerations were noted for the Clatskanie Elementary School buildings based on the short term simultaneous test results of the forty-five (45) detached samplers.

All radon measurements were below the action limit of 4 pCi/L and all radon measurements varied between a low reading of 0.2 pCi/l at one (1) test sampler locations to five (5) Elementary school radon measurements greater than or equal to 2.0 pCi/L and less than 4.0 pCi/L. No elevated radon concentrations at or greater than 4 pCi/L were measured in the radon test units. The radon test results for the Clatskanie Elementary School buildings are based on these satisfactory short term simultaneous test results.

The subject school improvements are collectively referred to as the Clatskanie Elementary School Building and Cardiff building located at 815 S. Nehalem street in Clatskanie, Oregon. All short term radon test results were below the USEPA action limit of 4 pCi/L.

No elevated radon considerations were noted for the Clatskanie Elementary School buildings based on the short term simultaneous test results of the forty-five (45) samplers placed throughout the building. The average building radon concentration level was 1.16 pCi/L. The average outdoor radon concentration is 0.21 pCi/L and the average indoor radon concentration is 1.3 pCi/L. The EPA notes there is no safe level of radon. If there are questions concerning the radon testing at the district please initially contact the Clatskanie School District administration authority at (503) 728-0587.

Charles Arthur Spear
Environmental Professional

No elevated radon considerations were noted for the Clatskanie Elementary School buildings based on the short term simultaneous test results of the forty-five (45) samplers placed throughout the building. The average building radon concentration level was 1.16 pCi/L. The average outdoor radon concentration is 0.21 pCi/L and the average indoor radon concentration is 1.3 pCi/L. The EPA notes there is no safe level of radon. If there are questions concerning the radon testing at the district please initially contact the Clatskanie School District administration authority at (503) 728-0587.

Charles Arthur Spear
Charles Arthur Spear
Environmental Professional

2.0 RADON ENVIRONMENTAL RISK

The U.S Environmental Protection Agency (EPA) and other major national and international scientific organizations have concluded that radon is a human carcinogen and poses a serious environmental health problem. The EPA recommends that schools take action to reduce the level of radon concentration levels are 4 pCi/L or higher.

The U.S Surgeon General has warned about the health risk from the exposure to radon in indoor air. The surgeon general has urged Americans to test their homes because radon is the leading cause of lung cancer for non-smokers in the United States and breathing in radon over prolonged periods can present a significant health risk. The USEPA has estimated that approximately 21,000 lung cancer-related deaths occur annually with an estimated 275 lung cancer deaths annually in Oregon.

The US EPA has states that "Any exposure has some risk of causing lung cancer. The lower the radon risk level in your home, the lower your family's risk of lung cancer." The EPA has noted that depending on your geographic location the radon levels of air you breathe outside the home may be as Elementary as 0.74 pCi./L. The national average of outside radon levels are 0.4 pCi/L and it has been estimated by The National Academy of Sciences that outdoor radon levels cause approximately 800 of the 21,000 radon induced lung cancer deaths in the US each year.

Radon Act 51 passed by Congress set the national outdoor level of radon gas (0.4pCi/L) as the target radon level for indoor radon levels. Unfortunately, two-thirds of all homes exceeded this level. The USEPA was tasked with setting practical guidelines and recommendations for the nation. The USEPA thereby set a practical level of 4pCi/L as an action level for radon.

3.0 RADON DESCRIPTION

Radon gas is an extremely toxic, chemically inert, odorless, colorless, and tasteless naturally-occurring radioactive element having the symbol Rn. Radon has the atomic number 86; an atomic weight of 222; a melting point of -71 degrees Celsius; a boiling point of -62 degrees; and 18 radioactive isotopes. It is derived from the radioactive decay of radium and is used in cancer treatment; as a tracer in leak detection; and in radiology.

4.0 RADON CHARACTERISTICS

The concentrations of radon in a building are dependent on factors to include the concentration of uranium and radium in the soil; the type of underlying geology; soil permeability; available migration pathways such as subsurface utilities; foundation openings; air temperature and pressure differentials and building ventilation.

Radon may migrate into a study area by either a pressure driven transport or no pressure differentials. The subject Elementary School Buildings were built on concrete foundation and slab on slab foundations. Radon may migrate through foundations by the availability of expansion joints and cracks in the foundation. Radon may also migrate into a building through basements, utility trenches, pipe runs, HVAC systems, and other building ventilation systems. Radon contributions from building materials off-gassing are not often the source of measurable radon.

5.0 RADON TESTING ACTIVITY

EPA recommends that initial measurements be performed by the utilization of short term testers placed in the lowest section of the subject buildings and performed under closed door conditions. An initial short term test ensures that school students and workers may be informed quickly if radon measurements reveal elevated radon test levels. If the short term measurement is greater than 4 picoCuries per liter (pCi/L) or 0.02 working levels (WL), a followup measurement is recommended. The purpose of the follow up measurement is to determine whether or not radon mitigation is necessary for the measurement area.

A total of forty-five (45) short term radon test units were placed throughout the Clatskanie Elementary and Cardiff school buildings frequently occupied areas to include all the classrooms, gymnasium, offices, staff lounges, library, kitchen, commons rooms, work rooms, and cafeteria. All radon measurements varied between one (1) low radon concentration measurement of 0.2 pCi/L and seven (7) higher Elementary school radon concentration measurements between 2.0 pCi/L and 3.1 pCi/L. No radon measurements were elevated and one reading of 3.1 pCi/L approached 4 pCi/L. These low concentration sampler test results are summarized in Appendix 1.0.

The radon samplers were opened on Friday, October 4, 2019 and capped on Monday, October 7, 2019. The capped radon samplers were packaged; logged on a chain of custody form; and shipped to ProLab Laboratories. Radon test results were reported to EIS on Tuesday, October 15, 2019. All radon measurement levels were at low concentrations varying between low measurements of 0.2 pCi/L and a single high reading of 3.1 pCi/L. No elevated radon concentrations at or exceeding 4 pCi/L were detected in the Clatskanie Elementary School building samplers.

6.0 RADON TEST RESULTS SUMMARY TABLE

A total of forty-five (45) short term radon test units were placed throughout the Clatskanie Elementary and Cardiff school buildings frequently occupied areas to include the classrooms, cafeteria, library, offices, gymnasium, work rooms, and common rooms. The radon samplers were opened on Friday, October 4, 2019 and capped on Monday, October 7, 2019. Radon test results were reported to EIS on Tuesday, October 15, 2019. Twenty-three (23) radon measurements were low with concentrations less than or equal to 2.0 pCi/L and no radon concentration considerations at or greater than 4 pCi/L were noted for the Clatskanie Elementary school buildings based on these analytical test results.

The highest radon measurements greater than or equal to 2.0 pCi/L were confirmed in five (5) radon samplers. The five (5) high Elementary radon tester measurements greater than or equal to 2.0 pCi/L and less than 4 pCi/L are summarized as follows:

<u>Sample serial No.</u>	<u>Sample location</u>	<u>Sample test result</u>
4841294	Gym	2.2 pCi/L
4866056	Gym	2.2 pCi/L
4866031	Gym	2.2 pCi/L
4865928	Gym	2.7 pCi/L
4841310	Sped A	3.1 pCi/L

The lowest radon measurements of 0.2 pCi/L was confirmed in a total of one (1) radon sampler. Eight (8) radon test measurements were less than or equal to 0.5 pCi/L and are summarized as follows:

<u>Sample serial No.</u>	<u>Sample location</u>	<u>Sample test result</u>
4866062	Room 204	0.5 pCi/L
4866014	Room 204	0.3 pCi/L
4866292	Room 206	0.3 pCi/L
4590538	Room 18 duplicate	0.6 pCi/L
4813927	Speech	0.5 pCi/L
4814099	Cafeteria	0.5 pCi/L
4866060	Room 205	0.5 pCi/L
4841371	Room 207	0.2 pCi/L

All sampler test results are summarized in Appendix 1.0. No elevated radon considerations were noted for the radon test results for the Clatskanie Elementary and Cardiff School buildings based on these short term simultaneous test results. Radon concentration levels have been noted to vary from school to school and also from room to room. All frequently occupied rooms in contact with the ground require testing.

This radon sampling episode noted the following;

Total number of testers - forty-five(45)
high readings (>2.0 pCi/L - five(5)
Low readings (<1.0 pCi/L) - 23
Average reading - 1.16 pCi/L

7.0 RADON MEASUREMENT RISK ASSESSMENT

The average Clatskanie Elementary School building reading was 1.16 pCi/L with slight analytical test results variances between 0.2 pCi/L and 3.1 pCi/L. No additional short term test radon testing is recommended for the Clatskanie Elementary School buildings at this time based on these favorable radon short term analytical test results.

The U.S surgeon general has warned about the health risk from the exposure to radon in indoor air. The surgeon general has urged Americans to test their homes because radon is the leading cause of lung cancer for non-smokers in the United States and breathing in radon over prolonged periods can present a significant health risk. The USEPA has estimated that approximately 21,000 lung cancer-related deaths occur annually with an estimated 275 lung cancer deaths annually in Oregon.

8.0 RADON LABORATORY ANALYSIS

The radon in test samplers was measured at the Pro-Lab Laboratory located at 1675 North Commerce Parkway in Weston, Florida using the liquid scintillation Method (EPA 402-R-92-004). The selected radon sampler devices utilized at the Clatskanie SD 97J Elementary school building are described as passive activated charcoal adsorption devices (AC).

The short term testers utilize activated carbon to absorb the radon gas in the air. The test unit has activated carbon with a perforation screen to filter out radon decay products. The absorber is resealed by EIS and shipped to Pro-Lab for processing and evaluation. The selected passive radon tester devices do not uniformly adsorb radon during the testing episode and are not described as integrating devices.

The total of forty-five (45) radon test units supplied by a certified laboratory known as Pro-Lab were utilized at the Elementary school building. The testers were placed within functional frequently occupied Clatskanie Elementary School and Cardiff school building areas between Friday, October 4, 2019 and Monday, October 7, 2019. The total of forty-five (45) short term samplers were capped and submitted to Pro-lab laboratories for radon analysis on Friday, October 11, 2019 and received by the Pro-Lab laboratories on Friday, October 11, 2019. Radon test results were reported to EIS on Tuesday, October 15, 2019. No elevated radon concentrations were detected in the radon samplers.

9.0 QUALITY ASSURANCE/QUALITY CONTROL

Quality Assurance measurements were conducted during the initial testing episode. Minimum acceptable standards of precision and accuracy were maintained during the entire course of the radon testing period. The Quality Assurance protocol included the inclusion of side by side detectors (duplicates) and unexposed control detectors (Blanks). The duplicates were placed as pairs of detectors deployed in the same location side by side during the identical testing periods. Duplicate placements were at least ten percent of the measurement locations. The duplicates were placed, shipped, and manifested with chains of custody to Pro-lab for analysis in the same manner as the other devices so that processing at the laboratory could not distinguish the testers.

8.0 RADON LABORATORY ANALYSIS

The radon in test samplers was measured at the Pro-Lab Laboratory located at 1675 North Commerce Parkway in Weston, Florida using the liquid scintillation Method (EPA 402-R-92-004). The selected radon sampler devices utilized at the Clatskanie SD 97J Elementary school building are described as passive activated charcoal adsorption devices (AC).

The short term testers utilize activated carbon to absorb the radon gas in the air. The test unit has activated carbon with a perforation screen to filter out radon decay products. The absorber is resealed by EIS and shipped to Pro-Lab for processing and evaluation. The selected passive radon tester devices do not uniformly adsorb radon during the testing episode and are not described as integrating devices.

The total of forty-five (45) radon test units supplied by a certified laboratory known as Pro-Lab were utilized at the Elementary school building. The testers were placed within functional frequently occupied Clatskanie Elementary School and Cardiff school building areas between Friday, October 4, 2019 and Monday, October 7, 2019. The total of forty-five (45) short term samplers were capped and submitted to Pro-lab laboratories for radon analysis on Friday, October 11, 2019 and received by the Pro-Lab laboratories on Friday, October 11, 2019. Radon test results were reported to EIS on Tuesday, October 15, 2019. No elevated radon concentrations were detected in the radon samplers.

9.0 QUALITY ASSURANCE/QUALITY CONTROL

Quality Assurance measurements were conducted during the initial testing episode. Minimum acceptable standards of precision and accuracy were maintained during the entire course of the radon testing period. The Quality Assurance protocol included the inclusion of side by side detectors (duplicates) and unexposed control detectors (Blanks). The duplicates were placed as pairs of detectors deployed in the same location side by side during the identical testing periods. Duplicate placements were at least ten percent of the measurement locations. The duplicates were placed, shipped, and manifested with chains of custody to Pro-lab for analysis in the same manner as the other devices so that processing at the laboratory could not distinguish the testers.

Duplicate and blank samplers are listed as follows;

<u>Sample serial No.</u>	<u>Sample location</u>	<u>Sample test result</u>
4841327	Room 17 duplicate	0.9 pCi/L
4590538	Room 18 duplicate	0.5 pCi/L
4866261	Art room duplicate	1.6 pCi/L
4866010	Copy room duplicate	1.8 pCi/L
4590781	Library duplicate	0.9 pCi/L

Spike samples are handled and spiked by the PRO-LAB laboratory and results remain as internal tests and confidential per regulation. Spike samples are routinely conducted per the laboratory proficiency requirements.

10.0 RECOMMENDATIONS & CONCLUSIONS

Radon measurement levels were low with average concentrations of 1.16 pCi/L with slight concentration variances between 0.2 and 3.1 pCi/L. No elevated radon concentrations were detected in the samplers.

In the opinion of EIS, no additional short term radon retesting is required at the Clatskanie Elementary School and Cardiff Buildings. In the opinion of EIS, the satisfactory radon test results are generally indicative of generally satisfactory radon conditions in the functional classrooms, gymnasium, library, common rooms, offices, cafeteria, and offices and all the frequently occupied rooms and no additional short-term radon testing is required at the Clatskanie Elementary and Cardiff School Building based on these radon measurement test results at this time. The sample analytical position and result tables are listed in Appendix 1.0 of this report.

In the opinion of EIS, no significant data gaps remain concerning radon risk at the subject property based on current analytical radon test results. Actual radon analytical test results are included as listed in Appendix 1.0 of this report.

In the opinion of EIS, based on actual extensive passive radon testing at the subject building no additional limited short term radon retesting is recommended at the Clatskanie Elementary School and Cardiff School Buildings at this time. In the opinion of EIS, the satisfactory radon test results are generally indicative of satisfactory radon conditions at the Clatskanie Elementary School Building. If there are questions concerning the radon testing at the district please initially contact the Clatskanie School District administration authority at (503) 728-0587.

Respectfully,



Charles A. Spear
Environmental Professional

11.0 LIMITATIONS

This report was prepared in accordance with generally accepted ASTM standards of environmental practice at the time this investigation was performed. Evaluations of the conditions at the site for the purpose of this investigation are made from a limited number of observation and sample points and may be subjective in some cases. The client is solely responsible for providing any notices or disclosures to concerned public agencies or to the public.

Environmental Inspection Services has prepared this report based on information collected from available analytical test results. The scope of this investigation is limited and did include a limited number of radon testers and no subsurface or sub-slab radon screening of soil and groundwater. No radon mitigation was performed on the subject property.

This report is not a substitution for a formal radon mitigation and/or radon mitigation effort. The findings and conclusions are not to be regarded as scientific certainties. Findings are based on professional judgement concerning independent laboratory data significance. This report is an expression of professional opinion and is not a warranty expressed or implied.

APPENDIX 1.0
RADON ANALYTICAL TEST RESULTS

ENVIRONMENTAL INSPECTION SERVICES

11981 FARGO RD NE
AURORA, OR 97002
503.680.6398

Catskanie Elementary School
815 S Nehalem St, Catskanie, OR 97016

charles_a_spear@yahoo.com

Vial #	Location	Start Date	Start Time	End Date	End Time	LEVEL
4866062	RM 204	10/4/2019	3:13 PM	10/7/2019	2:57 PM	0.5
4866014	RM 204	10/4/2019	3:13 PM	10/7/2019	2:57 PM	0.3
4866292	RM 206	10/4/2019	3:14 PM	10/7/2019	2:57 PM	0.3
4841374	CARD RM 14	10/4/2019	3:17 PM	10/7/2019	3:00 PM	0.8
4841421	CARD RM 15	10/4/2019	3:20 PM	10/7/2019	3:00 PM	1.1
4841411	RM 16	10/4/2019	3:22 PM	10/7/2019	3:03 PM	0.8
4865941	RM 17	10/4/2019	3:23 PM	10/7/2019	3:02 PM	0.7
4841327	RM 17 DUP	10/4/2019	3:23 PM	10/7/2019	3:04 PM	0.9
4866204	Staff	10/4/2019	3:25 PM	10/7/2019	3:04 PM	1
4841294	Gym	10/4/2019	3:30 PM	10/7/2019	3:03 PM	2.2
4866056	Gym	10/4/2019	3:30 PM	10/7/2019	3:02 PM	2.2
4866031	Gym	10/4/2019	3:30 PM	10/7/2019	3:03 PM	2.2
4865928	Gym	10/4/2019	3:30 PM	10/7/2019	3:05 PM	2.7
4841445	RM 22	10/4/2019	3:33 PM	10/7/2019	3:05 PM	1.5
4841313	RM 21	10/4/2019	3:35 PM	10/7/2019	3:05 PM	1.5
4769046	RM 20	10/4/2019	3:37 PM	10/7/2019	3:05 PM	1.2
4866157	RM 19	10/4/2019	3:40 PM	10/7/2019	3:05 PM	1.3
4841461	RM 18	10/4/2019	3:42 PM	10/7/2019	3:05 PM	0.6
4590538	RM 18 DUP	10/4/2019	3:42 PM	10/7/2019	3:05 PM	0.5
4841323	SPED	10/4/2019	2:25 PM	10/7/2019	2:40 PM	1.9
4813927	Speech	10/4/2019	2:27 PM	10/7/2019	2:41 PM	0.5
4841310	SPED A	10/4/2019	2:29 PM	10/7/2019	2:41 PM	3.1
4866068	Art (Main)	10/4/2019	2:30 PM	10/7/2019	2:45 PM	1.1
4866105	Art (Rear)	10/4/2019	2:32 PM	10/7/2019	2:45 PM	1.6
4866207	Art (Rear)	10/4/2019	2:32 PM	10/7/2019	2:45 PM	1.6
4866261	Art DUP	10/4/2019	2:35 PM	10/7/2019	2:45 PM	1.6
4866135	Copy	10/4/2019	2:40 PM	10/7/2019	2:45 PM	1.7
4866010	Copy DUP	10/4/2019	2:40 PM	10/7/2019	2:45 PM	1.8
4866315	Gym	10/4/2019	2:33 PM	10/7/2019	2:44 PM	1.4
4841459	Gym	10/4/2019	2:33 PM	10/7/2019	2:44 PM	1.3
4590716	Gym	10/4/2019	2:33 PM	10/7/2019	2:44 PM	1.2
4865904	Gym	10/4/2019	2:33 PM	10/7/2019	2:44 PM	1.6
4866065	Kitchen	10/4/2019	2:38 PM	10/7/2019	2:50 PM	0.6
4866186	Café	10/4/2019	2:40 PM	10/7/2019	2:50 PM	0.7
4841409	Café	10/4/2019	2:40 PM	10/7/2019	2:50 PM	0.5
4866168	Staff	10/4/2019	2:55 PM	10/7/2019	2:50 PM	0.7
4866101	RM 121	10/4/2019	2:56 PM	10/7/2019	2:51 PM	0.8
4865990	Lib (Rear)	10/4/2019	2:58 PM	10/7/2019	2:52 PM	1.4
4866009	Lib (Front)	10/4/2019	3:00 PM	10/7/2019	2:52 PM	0.9
4865938	Lib (Front)	10/4/2019	3:00 PM	10/7/2019	2:52 PM	1
4590781	Lib DUP	10/4/2019	3:00 PM	10/7/2019	2:52 PM	0.9
4866060	RM 205	10/4/2019	3:05 PM	10/7/2019	2:54 PM	0.5
4865988	RM 201	10/4/2019	3:10 PM	10/7/2019	2:55 PM	0.6
4841371	RM 207	10/4/2019	3:10 PM	10/7/2019	2:55 PM	0.2
4865946	RM 203	10/4/2019	3:10 PM	10/7/2019	2:56 PM	0.6

TOTAL TESTS - 45
 LOW TESTS - 23
 (≤1.0 PCIL) - 23
 HIGH TESTS - 22
 (≥2.0 PCIL) - 22
 (≤0.5 PCIL) - 7
 AVG RADON CONCENTRATION - 1.16 PCIL

TEST ID NUMBER: 1259375
DATE RECEIVED: 10/11/2019
REPORT DATE: 10/15/2019

ENVIRONMENTAL INSPECTION SERVICE, INC.
 11981 FARGO ROAD NORTHEAST,
 AURORA, OR 97002

TEST LOCATION

Clatskanie Elementary School
 815 S NEHALEM ST
 COLUMBIA COUNTY
 Clatskanie, OR 97016

This is a confidential report of the radon samples that were submitted to our laboratory for measurements of radon-222 levels. The results represent the amount of radon that was present in the air during the time of sampling. The radon is measured in our laboratory using the liquid scintillation method (EPA 402-R-92-004). This report will not be released to anyone without your permission except as required by individual state laws and guidelines.

HERE ARE YOUR TEST RESULTS

<u>VIAL #</u>	<u>ROOM TESTED</u>	<u>DATE OPENED</u>	<u>DATE CAPPED</u>	<u>DATE ANALYZED</u>	<u>RADON LEVEL</u>
4590538	1ST FLOOR RM 18 DUP	Oct 04, 2019 3:42 PM	Oct 07, 2019 3:05 PM	Oct 12, 2019 1:00 AM	0.5 pCi/L

THE EPA RECOMMENDS THAT YOU FIX YOUR HOME IF THE RADON LEVEL IS 4 PICOCURIES (PCi/L) OR HIGHER. Please read the EPA Citizen's Guide to Radon at www.epa.gov/radon/pubs/citguide.html. Residents of New Jersey should read "Radon Testing and Mitigation: The Basics" at <http://njradon.org/download/mitbas.pdf>. Radon levels less than 4 pCi/L still pose a risk. You may want to take additional measurements because radon levels can vary with the seasons. You may also want to consider doing a long term test to determine the average radon concentrations over a longer period of time. If the radon level is 4.0 pCi/L or higher you should perform either a long-term test or a second short-term test. If the radon level is higher than 10 pCi/L you should perform a second short-term test immediately. **If you would like to learn how to lower your radon levels, or have other questions, please contact your state radon office at (971) 673-0490.**

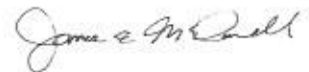
LIMITATIONS OF DATA AND PRODUCT LIABILITY

PRO-LAB expressly disclaims any and all liability for any special, incidental, or consequential damages resulting directly or indirectly from the improper use of or improper interpretation of the radon product or its results. Any delays in receipt of the test sample by PRO-LAB shall be the sole responsibility of the purchaser and their legal remedy shall be limited to recourse with their chosen carrier. Additionally, PRO-LAB shall not be responsible for the improper placement of the test canister nor shall PRO-LAB be liable for results derived directly or indirectly from the improper placement of said test canister. PRO-LAB, its agents, its retailers, its distributors, and the manufacturers' sole liability are limited to the cost for the replacement of the test canister itself only.



Jose Figueroa, RMS
 NRPP CERT# 109347 RT
 NRSB CERT # 18SS007

PRO-LAB NRSB # ARL0028
 PRO-LAB NEHA ID # 101461AL



James E. McDonnell IV

TEST ID NUMBER: 1259374
DATE RECEIVED: 10/11/2019
REPORT DATE: 10/15/2019

ENVIRONMENTAL INSPECTION SERVICE, INC.
11981 FARGO ROAD NORTHEAST,
AURORA, OR 97002

TEST LOCATION

Clatskanie Elementary School
815 S NEHALEM ST
COLUMBIA COUNTY
Clatskanie, OR 97016

This is a confidential report of the radon samples that were submitted to our laboratory for measurements of radon-222 levels. The results represent the amount of radon that was present in the air during the time of sampling. The radon is measured in our laboratory using the liquid scintillation method (EPA 402-R-92-004). This report will not be released to anyone without your permission except as required by individual state laws and guidelines.

HERE ARE YOUR TEST RESULTS

<u>VIAL #</u>	<u>ROOM TESTED</u>	<u>DATE OPENED</u>	<u>DATE CAPPED</u>	<u>DATE ANALYZED</u>	<u>RADON LEVEL</u>
4841461	1ST FLOOR RM 18	Oct 04, 2019 3:42 PM	Oct 07, 2019 3:05 PM	Oct 12, 2019 12:49 AM	0.6 pCi/L

THE EPA RECOMMENDS THAT YOU FIX YOUR HOME IF THE RADON LEVEL IS 4 PICOCURIES (PCi/L) OR HIGHER. Please read the EPA Citizen's Guide to Radon at www.epa.gov/radon/pubs/citguide.html. Residents of New Jersey should read "Radon Testing and Mitigation: The Basics" at <http://njradon.org/download/mitbas.pdf>. Radon levels less than 4 pCi/L still pose a risk. You may want to take additional measurements because radon levels can vary with the seasons. You may also want to consider doing a long term test to determine the average radon concentrations over a longer period of time. If the radon level is 4.0 pCi/L or higher you should perform either a long-term test or a second short-term test. If the radon level is higher than 10 pCi/L you should perform a second short-term test immediately. **If you would like to learn how to lower your radon levels, or have other questions, please contact your state radon office at (971) 673-0490.**

LIMITATIONS OF DATA AND PRODUCT LIABILITY

PRO-LAB expressly disclaims any and all liability for any special, incidental, or consequential damages resulting directly or indirectly from the improper use of or improper interpretation of the radon product or its results. Any delays in receipt of the test sample by PRO-LAB shall be the sole responsibility of the purchaser and their legal remedy shall be limited to recourse with their chosen carrier. Additionally, PRO-LAB shall not be responsible for the improper placement of the test canister nor shall PRO-LAB be liable for results derived directly or indirectly from the improper placement of said test canister. PRO-LAB, its agents, its retailers, its distributors, and the manufacturers' sole liability are limited to the cost for the replacement of the test canister itself only.



Jose Figueroa, RMS

NRPP CERT# 109347 RT
NRSB CERT # 18SS007

PRO-LAB NRSB # ARL0028
PRO-LAB NEHA ID # 101461AL



James E. McDonnell IV

TEST ID NUMBER: 1259372
DATE RECEIVED: 10/11/2019
REPORT DATE: 10/15/2019

ENVIRONMENTAL INSPECTION SERVICE, INC.
 11981 FARGO ROAD NORTHEAST,
 AURORA, OR 97002

TEST LOCATION

Clatskanie Elementary School
 815 S NEHALEM ST
 COLUMBIA COUNTY
 Clatskanie, OR 97016

This is a confidential report of the radon samples that were submitted to our laboratory for measurements of radon-222 levels. The results represent the amount of radon that was present in the air during the time of sampling. The radon is measured in our laboratory using the liquid scintillation method (EPA 402-R-92-004). This report will not be released to anyone without your permission except as required by individual state laws and guidelines.

HERE ARE YOUR TEST RESULTS

<u>VIAL #</u>	<u>ROOM TESTED</u>	<u>DATE OPENED</u>	<u>DATE CAPPED</u>	<u>DATE ANALYZED</u>	<u>RADON LEVEL</u>
4866157	1ST FLOOR RM 19	Oct 04, 2019 3:40 PM	Oct 07, 2019 3:05 PM	Oct 12, 2019 12:38 AM	1.3 pCi/L

THE EPA RECOMMENDS THAT YOU FIX YOUR HOME IF THE RADON LEVEL IS 4 PICOCURIES (PCi/L) OR HIGHER. Please read the EPA Citizen's Guide to Radon at www.epa.gov/radon/pubs/citguide.html. Residents of New Jersey should read "Radon Testing and Mitigation: The Basics" at <http://njradon.org/download/mitbas.pdf>. Radon levels less than 4 pCi/L still pose a risk. You may want to take additional measurements because radon levels can vary with the seasons. You may also want to consider doing a long term test to determine the average radon concentrations over a longer period of time. If the radon level is 4.0 pCi/L or higher you should perform either a long-term test or a second short-term test. If the radon level is higher than 10 pCi/L you should perform a second short-term test immediately. **If you would like to learn how to lower your radon levels, or have other questions, please contact your state radon office at (971) 673-0490.**

LIMITATIONS OF DATA AND PRODUCT LIABILITY

PRO-LAB expressly disclaims any and all liability for any special, incidental, or consequential damages resulting directly or indirectly from the improper use of or improper interpretation of the radon product or its results. Any delays in receipt of the test sample by PRO-LAB shall be the sole responsibility of the purchaser and their legal remedy shall be limited to recourse with their chosen carrier. Additionally, PRO-LAB shall not be responsible for the improper placement of the test canister nor shall PRO-LAB be liable for results derived directly or indirectly from the improper placement of said test canister. PRO-LAB, its agents, its retailers, its distributors, and the manufacturers' sole liability are limited to the cost for the replacement of the test canister itself only.



Jose Figueroa, RMS
 NRPP CERT# 109347 RT
 NRSB CERT # 18SS007

PRO-LAB NRSB # ARI0028
 PRO-LAB NEHA ID # 101461AL



James E. McDonnell IV

TEST ID NUMBER: 1259371
DATE RECEIVED: 10/11/2019
REPORT DATE: 10/15/2019ENVIRONMENTAL INSPECTION SERVICE, INC.
11981 FARGO ROAD NORTHEAST,
AURORA, OR 97002**TEST LOCATION**
Clatskanie Elementary School
815 S NEHALEM ST
COLUMBIA COUNTY
Clatskanie, OR 97016

This is a confidential report of the radon samples that were submitted to our laboratory for measurements of radon-222 levels. The results represent the amount of radon that was present in the air during the time of sampling. The radon is measured in our laboratory using the liquid scintillation method (EPA 402-R-92-004). This report will not be released to anyone without your permission except as required by individual state laws and guidelines.

HERE ARE YOUR TEST RESULTS

<u>VIAL #</u>	<u>ROOM TESTED</u>	<u>DATE OPENED</u>	<u>DATE CAPPED</u>	<u>DATE ANALYZED</u>	<u>RADON LEVEL</u>
4769046	1ST FLOOR RM 20	Oct 04, 2019 3:37 PM	Oct 07, 2019 3:05 PM	Oct 12, 2019 12:28 AM	1.2 pCi/L

THE EPA RECOMMENDS THAT YOU FIX YOUR HOME IF THE RADON LEVEL IS 4 PICOCURIES (PCi/L) OR HIGHER. Please read the EPA Citizen's Guide to Radon at www.epa.gov/radon/pubs/citguide.html. Residents of New Jersey should read "Radon Testing and Mitigation: The Basics" at <http://njradon.org/download/mitbas.pdf>. Radon levels less than 4 pCi/L still pose a risk. You may want to take additional measurements because radon levels can vary with the seasons. You may also want to consider doing a long term test to determine the average radon concentrations over a longer period of time. If the radon level is 4.0 pCi/L or higher you should perform either a long-term test or a second short-term test. If the radon level is higher than 10 pCi/L you should perform a second short-term test immediately. **If you would like to learn how to lower your radon levels, or have other questions, please contact your state radon office at (971) 673-0490.**

LIMITATIONS OF DATA AND PRODUCT LIABILITY

PRO-LAB expressly disclaims any and all liability for any special, incidental, or consequential damages resulting directly or indirectly from the improper use of or improper interpretation of the radon product or its results. Any delays in receipt of the test sample by PRO-LAB shall be the sole responsibility of the purchaser and their legal remedy shall be limited to recourse with their chosen carrier. Additionally, PRO-LAB shall not be responsible for the improper placement of the test canister nor shall PRO-LAB be liable for results derived directly or indirectly from the improper placement of said test canister. PRO-LAB, its agents, its retailers, its distributors, and the manufacturers' sole liability are limited to the cost for the replacement of the test canister itself only.

Jose Figueroa, RMS
NRPP CERT# 109347 RT
NRSB CERT # 18SS007PRO-LAB NRSB # ARL0028
PRO-LAB NEHA ID # 101461AL

James E. McDonnell IV

TEST ID NUMBER: 1259370
DATE RECEIVED: 10/11/2019
REPORT DATE: 10/15/2019ENVIRONMENTAL INSPECTION SERVICE, INC.
11981 FARGO ROAD NORTHEAST,
AURORA, OR 97002**TEST LOCATION**Clatskanie Elementary School
815 S NEHALEM ST
COLUMBIA COUNTY
Clatskanie, OR 97016

This is a confidential report of the radon samples that were submitted to our laboratory for measurements of radon-222 levels. The results represent the amount of radon that was present in the air during the time of sampling. The radon is measured in our laboratory using the liquid scintillation method (EPA 402-R-92-004). This report will not be released to anyone without your permission except as required by individual state laws and guidelines.

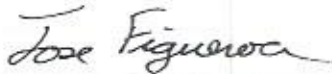
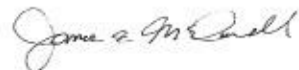
HERE ARE YOUR TEST RESULTS

<u>VIAL #</u>	<u>ROOM TESTED</u>	<u>DATE OPENED</u>	<u>DATE CAPPED</u>	<u>DATE ANALYZED</u>	<u>RADON LEVEL</u>
4841313	1ST FLOOR RM 21	Oct 04, 2019 3:35 PM	Oct 07, 2019 3:05 AM	Oct 12, 2019 12:17 AM	1.5 pCi/L

THE EPA RECOMMENDS THAT YOU FIX YOUR HOME IF THE RADON LEVEL IS 4 PICOCURIES (PCi/L) OR HIGHER. Please read the EPA Citizen's Guide to Radon at www.epa.gov/radon/pubs/citguide.html. Residents of New Jersey should read "Radon Testing and Mitigation: The Basics" at <http://njradon.org/download/mitbas.pdf>. Radon levels less than 4 pCi/L still pose a risk. You may want to take additional measurements because radon levels can vary with the seasons. You may also want to consider doing a long term test to determine the average radon concentrations over a longer period of time. If the radon level is 4.0 pCi/L or higher you should perform either a long-term test or a second short-term test. If the radon level is higher than 10 pCi/L you should perform a second short-term test immediately. **If you would like to learn how to lower your radon levels, or have other questions, please contact your state radon office at (971) 673-0490.**

LIMITATIONS OF DATA AND PRODUCT LIABILITY

PRO-LAB expressly disclaims any and all liability for any special, incidental, or consequential damages resulting directly or indirectly from the improper use of or improper interpretation of the radon product or its results. Any delays in receipt of the test sample by PRO-LAB shall be the sole responsibility of the purchaser and their legal remedy shall be limited to recourse with their chosen carrier. Additionally, PRO-LAB shall not be responsible for the improper placement of the test canister nor shall PRO-LAB be liable for results derived directly or indirectly from the improper placement of said test canister. PRO-LAB, its agents, its retailers, its distributors, and the manufacturers' sole liability are limited to the cost for the replacement of the test canister itself only.

Jose Figueroa, RMS
NRPP CERT# 109347 RT
NRSB CERT # 18SS007PRO-LAB NRSB # ARL0028
PRO-LAB NEHA ID # 101461AL

James E. McDonnell IV

TEST ID NUMBER: 1259369
DATE RECEIVED: 10/11/2019
REPORT DATE: 10/15/2019

ENVIRONMENTAL INSPECTION SERVICE, INC.
11981 FARGO ROAD NORTHEAST,
AURORA, OR 97002

TEST LOCATION

Clatskanie Elementary School
815 S NEHALEM ST
COLUMBIA COUNTY
Clatskanie, OR 97016

This is a confidential report of the radon samples that were submitted to our laboratory for measurements of radon-222 levels. The results represent the amount of radon that was present in the air during the time of sampling. The radon is measured in our laboratory using the liquid scintillation method (EPA 402-R-92-004). This report will not be released to anyone without your permission except as required by individual state laws and guidelines.

HERE ARE YOUR TEST RESULTS

<u>VIAL #</u>	<u>ROOM TESTED</u>	<u>DATE OPENED</u>	<u>DATE CAPPED</u>	<u>DATE ANALYZED</u>	<u>RADON LEVEL</u>
4841445	1ST FLOOR RM 22	Oct 04, 2019 3:33 PM	Oct 07, 2019 3:05 PM	Oct 12, 2019 12:06 AM	1.5 pCi/L

THE EPA RECOMMENDS THAT YOU FIX YOUR HOME IF THE RADON LEVEL IS 4 PICOCURIES (PCi/L) OR HIGHER. Please read the EPA Citizen's Guide to Radon at www.epa.gov/radon/pubs/citguide.html. Residents of New Jersey should read "Radon Testing and Mitigation: The Basics" at <http://njradon.org/download/mitbas.pdf>. Radon levels less than 4 pCi/L still pose a risk. You may want to take additional measurements because radon levels can vary with the seasons. You may also want to consider doing a long term test to determine the average radon concentrations over a longer period of time. If the radon level is 4.0 pCi/L or higher you should perform either a long-term test or a second short-term test. If the radon level is higher than 10 pCi/L you should perform a second short-term test immediately. **If you would like to learn how to lower your radon levels, or have other questions, please contact your state radon office at (971) 673-0490.**

LIMITATIONS OF DATA AND PRODUCT LIABILITY

PRO-LAB expressly disclaims any and all liability for any special, incidental, or consequential damages resulting directly or indirectly from the improper use of or improper interpretation of the radon product or its results. Any delays in receipt of the test sample by PRO-LAB shall be the sole responsibility of the purchaser and their legal remedy shall be limited to recourse with their chosen carrier. Additionally, PRO-LAB shall not be responsible for the improper placement of the test canister nor shall PRO-LAB be liable for results derived directly or indirectly from the improper placement of said test canister. PRO-LAB, its agents, its retailers, its distributors, and the manufacturers' sole liability are limited to the cost for the replacement of the test canister itself only.



Jose Figueroa, RMS
NRPP CERT# 109347 RT
NRSB CERT # 18SS007



James E. McDonnell IV

PRO-LAB NRSB # ARI.0028
PRO-LAB NEHA ID # 101461AL

TEST ID NUMBER: 1259367
DATE RECEIVED: 10/11/2019
REPORT DATE: 10/15/2019

ENVIRONMENTAL INSPECTION SERVICE, INC.
 11981 FARGO ROAD NORTHEAST,
 AURORA, OR 97002

TEST LOCATION

Clatskanie Elementary School
 815 S NEHALEM ST
 COLUMBIA COUNTY
 Clatskanie, OR 97016

This is a confidential report of the radon samples that were submitted to our laboratory for measurements of radon-222 levels. The results represent the amount of radon that was present in the air during the time of sampling. The radon is measured in our laboratory using the liquid scintillation method (EPA 402-R-92-004). This report will not be released to anyone without your permission except as required by individual state laws and guidelines.

HERE ARE YOUR TEST RESULTS

<u>VIAL #</u>	<u>ROOM TESTED</u>	<u>DATE OPENED</u>	<u>DATE CAPPED</u>	<u>DATE ANALYZED</u>	<u>RADON LEVEL</u>
4865928	1ST FLOOR GYM	Oct 04, 2019 3:30 PM	Oct 07, 2019 3:03 PM	Oct 11, 2019 11:55 PM	2.7 pCi/L

THE EPA RECOMMENDS THAT YOU FIX YOUR HOME IF THE RADON LEVEL IS 4 PICOCURIES (PCi/L) OR HIGHER.

Please read the EPA Citizen's Guide to Radon at www.epa.gov/radon/pubs/citguide.html. Residents of New Jersey should read "Radon Testing and Mitigation: The Basics" at <http://njradon.org/download/mitbas.pdf>. Radon levels less than 4 pCi/L still pose a risk. You may want to take additional measurements because radon levels can vary with the seasons. You may also want to consider doing a long term test to determine the average radon concentrations over a longer period of time. If the radon level is 4.0 pCi/L or higher you should perform either a long-term test or a second short-term test. If the radon level is higher than 10 pCi/L, you should perform a second short-term test immediately. **If you would like to learn how to lower your radon levels, or have other questions, please contact your state radon office at (971) 673-0490.**

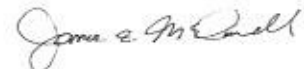
LIMITATIONS OF DATA AND PRODUCT LIABILITY

PRO-LAB expressly disclaims any and all liability for any special, incidental, or consequential damages resulting directly or indirectly from the improper use of or improper interpretation of the radon product or its results. Any delays in receipt of the test sample by PRO-LAB shall be the sole responsibility of the purchaser and their legal remedy shall be limited to recourse with their chosen carrier. Additionally, PRO-LAB shall not be responsible for the improper placement of the test canister nor shall PRO-LAB be liable for results derived directly or indirectly from the improper placement of said test canister. PRO-LAB, its agents, its retailers, its distributors, and the manufacturers' sole liability are limited to the cost for the replacement of the test canister itself only.



Jose Figueroa, RMS
 NRPP CERT# 109347 RT
 NRSB CERT # 18SS007

PRO-LAB NRSB # ARL0028
 PRO-LAB NEHA ID # 101461AL



James E. McDonnell IV

TEST ID NUMBER: 1259366
DATE RECEIVED: 10/11/2019
REPORT DATE: 10/15/2019ENVIRONMENTAL INSPECTION SERVICE, INC.
11981 FARGO ROAD NORTHEAST,
AURORA, OR 97002**TEST LOCATION**Clatskanie Elementary School
815 S NEHALEM ST
COLUMBIA COUNTY
Clatskanie, OR 97016

This is a confidential report of the radon samples that were submitted to our laboratory for measurements of radon-222 levels. The results represent the amount of radon that was present in the air during the time of sampling. The radon is measured in our laboratory using the liquid scintillation method (EPA 402-R-92-004). This report will not be released to anyone without your permission except as required by individual state laws and guidelines.

HERE ARE YOUR TEST RESULTS

<u>VIAL #</u>	<u>ROOM TESTED</u>	<u>DATE OPENED</u>	<u>DATE CAPPED</u>	<u>DATE ANALYZED</u>	<u>RADON LEVEL</u>
4866031	1ST FLOOR GYM	Oct 04, 2019 3:30 PM	Oct 07, 2019 3:03 PM	Oct 12, 2019 2:58 AM	2.2 pCi/L

THE EPA RECOMMENDS THAT YOU FIX YOUR HOME IF THE RADON LEVEL IS 4 PICOCURIES (PCi/L) OR HIGHER. Please read the EPA Citizen's Guide to Radon at www.epa.gov/radon/pubs/citguide.html. Residents of New Jersey should read "Radon Testing and Mitigation: The Basics" at <http://njradon.org/download/mitbas.pdf>. Radon levels less than 4 pCi/L still pose a risk. You may want to take additional measurements because radon levels can vary with the seasons. You may also want to consider doing a long term test to determine the average radon concentrations over a longer period of time. If the radon level is 4.0 pCi/L or higher you should perform either a long-term test or a second short-term test. If the radon level is higher than 10 pCi/L you should perform a second short-term test immediately. **If you would like to learn how to lower your radon levels, or have other questions, please contact your state radon office at (971) 673-0490.**

LIMITATIONS OF DATA AND PRODUCT LIABILITY

PRO-LAB expressly disclaims any and all liability for any special, incidental, or consequential damages resulting directly or indirectly from the improper use of or improper interpretation of the radon product or its results. Any delays in receipt of the test sample by PRO-LAB shall be the sole responsibility of the purchaser and their legal remedy shall be limited to recourse with their chosen carrier. Additionally, PRO-LAB shall not be responsible for the improper placement of the test canister nor shall PRO-LAB be liable for results derived directly or indirectly from the improper placement of said test canister. PRO-LAB, its agents, its retailers, its distributors, and the manufacturers' sole liability are limited to the cost for the replacement of the test canister itself only.

Jose Figueroa, RMS
NRPP CERT# 109347 RT
NRSB CERT # 18SS007PRO-LAB NRSB # ARI.0028
PRO-LAB NEHA ID # 101461AL

James E. McDonnell IV

TEST ID NUMBER: 1259364
DATE RECEIVED: 10/11/2019
REPORT DATE: 10/15/2019ENVIRONMENTAL INSPECTION SERVICE, INC.
11981 FARGO ROAD NORTHEAST,
AURORA, OR 97002**TEST LOCATION**Clatskanie Elementary School
815 S NEHALEM ST
COLUMBIA COUNTY
Clatskanie, OR 97016

This is a confidential report of the radon samples that were submitted to our laboratory for measurements of radon-222 levels. The results represent the amount of radon that was present in the air during the time of sampling. The radon is measured in our laboratory using the liquid scintillation method (EPA 402-R-92-004). This report will not be released to anyone without your permission except as required by individual state laws and guidelines.

HERE ARE YOUR TEST RESULTS

<u>VIAL #</u>	<u>ROOM TESTED</u>	<u>DATE OPENED</u>	<u>DATE CAPPED</u>	<u>DATE ANALYZED</u>	<u>RADON LEVEL</u>
4866056	1ST FLOOR GYM	Oct 04, 2019 3:30 PM	Oct 07, 2019 3:02 PM	Oct 12, 2019 2:47 AM	2.2 pCi/L

THE EPA RECOMMENDS THAT YOU FIX YOUR HOME IF THE RADON LEVEL IS 4 PICOCURIES (PC/L) OR HIGHER. Please read the EPA Citizen's Guide to Radon at www.epa.gov/radon/pubs/citguide.html. Residents of New Jersey should read "Radon Testing and Mitigation: The Basics" at <http://njradon.org/download/mitbas.pdf>. Radon levels less than 4 pCi/L still pose a risk. You may want to take additional measurements because radon levels can vary with the seasons. You may also want to consider doing a long term test to determine the average radon concentrations over a longer period of time. If the radon level is 4.0 pCi/L or higher you should perform either a long-term test or a second short-term test. If the radon level is higher than 10 pCi/L you should perform a second short-term test immediately. **If you would like to learn how to lower your radon levels, or have other questions, please contact your state radon office at (971) 673-0490.**

LIMITATIONS OF DATA AND PRODUCT LIABILITY

PRO-LAB expressly disclaims any and all liability for any special, incidental, or consequential damages resulting directly or indirectly from the improper use of or improper interpretation of the radon product or its results. Any delays in receipt of the test sample by PRO-LAB shall be the sole responsibility of the purchaser and their legal remedy shall be limited to recourse with their chosen carrier. Additionally, PRO-LAB shall not be responsible for the improper placement of the test canister nor shall PRO-LAB be liable for results derived directly or indirectly from the improper placement of said test canister. PRO-LAB, its agents, its retailers, its distributors, and the manufacturers' sole liability are limited to the cost for the replacement of the test canister itself only.

Jose Figueroa, RMS
NRPP CERT# 109347 RT
NRSB CERT # 18SS007PRO-LAB NRSB # ARL0028
PRO-LAB NEHA ID # 101461AL

James E. McDonnell IV

TEST ID NUMBER: 1259360
DATE RECEIVED: 10/11/2019
REPORT DATE: 10/15/2019

ENVIRONMENTAL INSPECTION SERVICE, INC.
11981 FARGO ROAD NORTHEAST,
AURORA, OR 97002

TEST LOCATION

Clatskanie Elementary School
815 S NEHALEM ST
COLUMBIA COUNTY
Clatskanie, OR 97016

This is a confidential report of the radon samples that were submitted to our laboratory for measurements of radon-222 levels. The results represent the amount of radon that was present in the air during the time of sampling. The radon is measured in our laboratory using the liquid scintillation method (EPA 402-R-92-004). This report will not be released to anyone without your permission except as required by individual state laws and guidelines.

HERE ARE YOUR TEST RESULTS

<u>VIAL #</u>	<u>ROOM TESTED</u>	<u>DATE OPENED</u>	<u>DATE CAPPED</u>	<u>DATE ANALYZED</u>	<u>RADON LEVEL</u>
4841327	1ST FLOOR RM 17 DUP	Oct 04, 2019 3:23 PM	Oct 07, 2019 3:04 PM	Oct 12, 2019 2:15 AM	0.9 pCi/L

THE EPA RECOMMENDS THAT YOU FIX YOUR HOME IF THE RADON LEVEL IS 4 PICOCURIES (PCi/L) OR HIGHER. Please read the EPA Citizen's Guide to Radon at www.epa.gov/radon/pubs/citguide.html. Residents of New Jersey should read "Radon Testing and Mitigation: The Basics" at <http://njradon.org/download/mitbas.pdf>. Radon levels less than 4 pCi/L still pose a risk. You may want to take additional measurements because radon levels can vary with the seasons. You may also want to consider doing a long term test to determine the average radon concentrations over a longer period of time. If the radon level is 4.0 pCi/L or higher you should perform either a long-term test or a second short-term test. If the radon level is higher than 10 pCi/L you should perform a second short-term test immediately. **If you would like to learn how to lower your radon levels, or have other questions, please contact your state radon office at (971) 673-0490.**

LIMITATIONS OF DATA AND PRODUCT LIABILITY

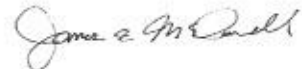
PRO-LAB expressly disclaims any and all liability for any special, incidental, or consequential damages resulting directly or indirectly from the improper use of or improper interpretation of the radon product or its results. Any delays in receipt of the test sample by PRO-LAB shall be the sole responsibility of the purchaser and their legal remedy shall be limited to recourse with their chosen carrier. Additionally, PRO-LAB shall not be responsible for the improper placement of the test canister nor shall PRO-LAB be liable for results derived directly or indirectly from the improper placement of said test canister. PRO-LAB, its agents, its retailers, its distributors, and the manufacturers' sole liability are limited to the cost for the replacement of the test canister itself only.



Jose Figueroa, RMS

NRPP CERT# 109347 RT
NRSB CERT # 18SS007

PRO-LAB NRSB # ARL0028
PRO-LAB NEHA ID # 101461AL



James E. McDonnell IV

TEST ID NUMBER: 1259358
DATE RECEIVED: 10/11/2019
REPORT DATE: 10/15/2019ENVIRONMENTAL INSPECTION SERVICE, INC.
11981 FARGO ROAD NORTHEAST,
AURORA, OR 97002**TEST LOCATION**Clatskanie Elementary School
815 S NEHALEM ST
COLUMBIA COUNTY
Clatskanie, OR 97016

This is a confidential report of the radon samples that were submitted to our laboratory for measurements of radon-222 levels. The results represent the amount of radon that was present in the air during the time of sampling. The radon is measured in our laboratory using the liquid scintillation method (EPA 402-R-92-004). This report will not be released to anyone without your permission except as required by individual state laws and guidelines.

HERE ARE YOUR TEST RESULTS

<u>VIAL #</u>	<u>ROOM TESTED</u>	<u>DATE OPENED</u>	<u>DATE CAPPED</u>	<u>DATE ANALYZED</u>	<u>RADON LEVEL</u>
4865841	1ST FLOOR RM 17	Oct 04, 2019 3:23 PM	Oct 07, 2019 3:02 PM	Oct 12, 2019 2:04 AM	0.7 pCi/L

THE EPA RECOMMENDS THAT YOU FIX YOUR HOME IF THE RADON LEVEL IS 4 PICOCURIES (PCi/L) OR HIGHER. Please read the EPA Citizen's Guide to Radon at www.epa.gov/radon/pubs/citguide.html. Residents of New Jersey should read "Radon Testing and Mitigation: The Basics" at <http://njradon.org/download/mitbas.pdf>. Radon levels less than 4 pCi/L still pose a risk. You may want to take additional measurements because radon levels can vary with the seasons. You may also want to consider doing a long term test to determine the average radon concentrations over a longer period of time. If the radon level is 4.0 pCi/L or higher you should perform either a long-term test or a second short-term test. If the radon level is higher than 10 pCi/L you should perform a second short-term test immediately. **If you would like to learn how to lower your radon levels, or have other questions, please contact your state radon office at (971) 673-0490.**

LIMITATIONS OF DATA AND PRODUCT LIABILITY

PRO-LAB expressly disclaims any and all liability for any special, incidental, or consequential damages resulting directly or indirectly from the improper use of or improper interpretation of the radon product or its results. Any delays in receipt of the test sample by PRO-LAB shall be the sole responsibility of the purchaser and their legal remedy shall be limited to recourse with their chosen carrier. Additionally, PRO-LAB shall not be responsible for the improper placement of the test canister nor shall PRO-LAB be liable for results derived directly or indirectly from the improper placement of said test canister. PRO-LAB, its agents, its retailers, its distributors, and the manufacturers' sole liability are limited to the cost for the replacement of the test canister itself only.



Jose Figueroa, RMS

NRPP CERT# 109347 RT
NRSB CERT # 18SS007PRO-LAB NRSB # ARI.0028
PRO-LAB NEHA ID # 101461AL

James E. McDonnell IV

TEST ID NUMBER: 1259357
DATE RECEIVED: 10/11/2019
REPORT DATE: 10/15/2019

ENVIRONMENTAL INSPECTION SERVICE, INC.
11981 FARGO ROAD NORTHEAST,
AURORA, OR 97002

TEST LOCATION

Clatskanie Elementary School
815 S NEHALEM ST
COLUMBIA COUNTY
Clatskanie, OR 97016

This is a confidential report of the radon samples that were submitted to our laboratory for measurements of radon-222 levels. The results represent the amount of radon that was present in the air during the time of sampling. The radon is measured in our laboratory using the liquid scintillation method (EPA 402-R-92-004). This report will not be released to anyone without your permission except as required by individual state laws and guidelines.

HERE ARE YOUR TEST RESULTS

<u>VIAL #</u>	<u>ROOM TESTED</u>	<u>DATE OPENED</u>	<u>DATE CAPPED</u>	<u>DATE ANALYZED</u>	<u>RADON LEVEL</u>
4841411	1ST FLOOR RM 16	Oct 04, 2019 3:22 PM	Oct 07, 2019 3:03 PM	Oct 12, 2019 3:48 AM	0.8 pCi/L

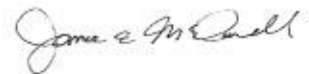
THE EPA RECOMMENDS THAT YOU FIX YOUR HOME IF THE RADON LEVEL IS 4 PICOCURIES (PCi/L) OR HIGHER. Please read the EPA Citizen's Guide to Radon at www.epa.gov/radon/pubs/citguide.html. Residents of New Jersey should read "Radon Testing and Mitigation: The Basics" at <http://njradon.org/download/mitbas.pdf>. Radon levels less than 4 pCi/L still pose a risk. You may want to take additional measurements because radon levels can vary with the seasons. You may also want to consider doing a long term test to determine the average radon concentrations over a longer period of time. If the radon level is 4.0 pCi/L or higher you should perform either a long-term test or a second short-term test. If the radon level is higher than 10 pCi/L you should perform a second short-term test immediately. **If you would like to learn how to lower your radon levels, or have other questions, please contact your state radon office at (971) 673-0490.**

LIMITATIONS OF DATA AND PRODUCT LIABILITY

PRO-LAB expressly disclaims any and all liability for any special, incidental, or consequential damages resulting directly or indirectly from the improper use of or improper interpretation of the radon product or its results. Any delays in receipt of the test sample by PRO-LAB shall be the sole responsibility of the purchaser and their legal remedy shall be limited to recourse with their chosen carrier. Additionally, PRO-LAB shall not be responsible for the improper placement of the test canister nor shall PRO-LAB be liable for results derived directly or indirectly from the improper placement of said test canister. PRO-LAB, its agents, its retailers, its distributors, and the manufacturers' sole liability are limited to the cost for the replacement of the test canister itself only.



Jose Figueroa, RMS
NRPP CERT# 109347 RT
NRSB CERT # 18SS007



James E. McDonnell IV

PRO-LAB NRSB # ARL0028
PRO-LAB NEHA ID # 101461AL

TEST ID NUMBER: 1259468
DATE RECEIVED: 10/11/2019
REPORT DATE: 10/15/2019ENVIRONMENTAL INSPECTION SERVICE, INC.
11981 FARGO ROAD NORTHEAST,
AURORA, OR 97002**TEST LOCATION**Clatskanie Elementary School
815 S NEHALEM ST
COLUMBIA COUNTY
Clatskanie, OR 97016

This is a confidential report of the radon samples that were submitted to our laboratory for measurements of radon-222 levels. The results represent the amount of radon that was present in the air during the time of sampling. The radon is measured in our laboratory using the liquid scintillation method (EPA 402-R-92-004). This report will not be released to anyone without your permission except as required by individual state laws and guidelines.

HERE ARE YOUR TEST RESULTS

<u>VIAL #</u>	<u>ROOM TESTED</u>	<u>DATE OPENED</u>	<u>DATE CAPPED</u>	<u>DATE ANALYZED</u>	<u>RADON LEVEL</u>
4865804	1ST FLOOR GYM	Oct 04, 2019 2:33 PM	Oct 07, 2019 2:44 PM	Oct 12, 2019 10:16 PM	1.6 pCi/L

THE EPA RECOMMENDS THAT YOU FIX YOUR HOME IF THE RADON LEVEL IS 4 PICOCURIES (PCi/L) OR HIGHER. Please read the EPA Citizen's Guide to Radon at www.epa.gov/radon/pubs/citguide.html. Residents of New Jersey should read "Radon Testing and Mitigation: The Basics" at <http://njradon.org/download/mitbas.pdf>. Radon levels less than 4 pCi/L still pose a risk. You may want to take additional measurements because radon levels can vary with the seasons. You may also want to consider doing a long term test to determine the average radon concentrations over a longer period of time. If the radon level is 4.0 pCi/L or higher you should perform either a long-term test or a second short-term test. If the radon level is higher than 10 pCi/L you should perform a second short-term test immediately. **If you would like to learn how to lower your radon levels, or have other questions, please contact your state radon office at (971) 673-0490.**

LIMITATIONS OF DATA AND PRODUCT LIABILITY

PRO-LAB expressly disclaims any and all liability for any special, incidental, or consequential damages resulting directly or indirectly from the improper use of or improper interpretation of the radon product or its results. Any delays in receipt of the test sample by PRO-LAB shall be the sole responsibility of the purchaser and their legal remedy shall be limited to recourse with their chosen carrier. Additionally, PRO-LAB shall not be responsible for the improper placement of the test canister nor shall PRO-LAB be liable for results derived directly or indirectly from the improper placement of said test canister. PRO-LAB, its agents, its retailers, its distributors, and the manufacturers' sole liability are limited to the cost for the replacement of the test canister itself only.



Jose Figueroa, RMS

NRPP CERT# 109347 RT
NRSB CERT # 18SS007PRO-LAB NRSB # ARL0028
PRO-LAB NEHA ID # 101461AL

James E. McDonnell IV

TEST ID NUMBER: 1259449
DATE RECEIVED: 10/11/2019
REPORT DATE: 10/15/2019ENVIRONMENTAL INSPECTION SERVICE, INC.
11981 FARGO ROAD NORTHEAST,
AURORA, OR 97002**TEST LOCATION**Clatskanie Elementary School
815 S NEHALEM ST
COLUMBIA COUNTY
Clatskanie, OR 97016

This is a confidential report of the radon samples that were submitted to our laboratory for measurements of radon-222 levels. The results represent the amount of radon that was present in the air during the time of sampling. The radon is measured in our laboratory using the liquid scintillation method (EPA 402-R-92-004). This report will not be released to anyone without your permission except as required by individual state laws and guidelines.

HERE ARE YOUR TEST RESULTS

<u>VIAL #</u>	<u>ROOM TESTED</u>	<u>DATE OPENED</u>	<u>DATE CAPPED</u>	<u>DATE ANALYZED</u>	<u>RADON LEVEL</u>
4866068	1ST FLOOR ART (MAIN)	Oct 04, 2019 2:30 PM	Oct 07, 2019 2:45 PM	Oct 13, 2019 12:46 AM	1.1 pCi/L

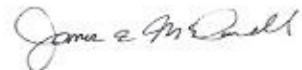
THE EPA RECOMMENDS THAT YOU FIX YOUR HOME IF THE RADON LEVEL IS 4 PICOCURIES (PC/L) OR HIGHER. Please read the EPA Citizen's Guide to Radon at www.epa.gov/radon/pubs/citguide.html. Residents of New Jersey should read "Radon Testing and Mitigation: The Basics" at <http://njradon.org/download/mitbas.pdf>. Radon levels less than 4 pCi/L still pose a risk. You may want to take additional measurements because radon levels can vary with the seasons. You may also want to consider doing a long term test to determine the average radon concentrations over a longer period of time. If the radon level is 4.0 pCi/L or higher you should perform either a long-term test or a second short-term test. If the radon level is higher than 10 pCi/L you should perform a second short-term test immediately. **If you would like to learn how to lower your radon levels, or have other questions, please contact your state radon office at (971) 673-0490.**

LIMITATIONS OF DATA AND PRODUCT LIABILITY

PRO-LAB expressly disclaims any and all liability for any special, incidental, or consequential damages resulting directly or indirectly from the improper use of or improper interpretation of the radon product or its results. Any delays in receipt of the test sample by PRO-LAB shall be the sole responsibility of the purchaser and their legal remedy shall be limited to recourse with their chosen carrier. Additionally, PRO-LAB shall not be responsible for the improper placement of the test canister nor shall PRO-LAB be liable for results derived directly or indirectly from the improper placement of said test canister. PRO-LAB, its agents, its retailers, its distributors, and the manufacturers' sole liability are limited to the cost for the replacement of the test canister itself only.



Jose Figueroa, RMS

NRPP CERT# 109347 RT
NRSB CERT # 18SS007PRO-LAB NRSB # ARL0028
PRO-LAB NEHA ID # 101461AL

James E. McDonnell IV

TEST ID NUMBER: 1259448
DATE RECEIVED: 10/11/2019
REPORT DATE: 10/15/2019ENVIRONMENTAL INSPECTION SERVICE, INC.
11981 FARGO ROAD NORTHEAST,
AURORA, OR 97002**TEST LOCATION**Clatskanie Elementary School
815 S NEHALEM ST
COLUMBIA COUNTY
Clatskanie, OR 97016

This is a confidential report of the radon samples that were submitted to our laboratory for measurements of radon-222 levels. The results represent the amount of radon that was present in the air during the time of sampling. The radon is measured in our laboratory using the liquid scintillation method (EPA 402-R-92-004). This report will not be released to anyone without your permission except as required by individual state laws and guidelines.

HERE ARE YOUR TEST RESULTS

<u>VIAL #</u>	<u>ROOM TESTED</u>	<u>DATE OPENED</u>	<u>DATE CAPPED</u>	<u>DATE ANALYZED</u>	<u>RADON LEVEL</u>
4841310	1ST FLOOR SPED A	Oct 04, 2019 2:29 PM	Oct 07, 2019 2:41 PM	Oct 13, 2019 12:35 AM	3.1 pCi/L

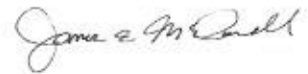
THE EPA RECOMMENDS THAT YOU FIX YOUR HOME IF THE RADON LEVEL IS 4 PICOCURIES (PC/L) OR HIGHER. Please read the EPA Citizen's Guide to Radon at www.epa.gov/radon/pubs/citguide.html. Residents of New Jersey should read "Radon Testing and Mitigation: The Basics" at <http://njradon.org/download/mitbas.pdf>. Radon levels less than 4 pCi/L still pose a risk. You may want to take additional measurements because radon levels can vary with the seasons. You may also want to consider doing a long term test to determine the average radon concentrations over a longer period of time. If the radon level is 4.0 pCi/L or higher you should perform either a long-term test or a second short-term test. If the radon level is higher than 10 pCi/L you should perform a second short-term test immediately. **If you would like to learn how to lower your radon levels, or have other questions, please contact your state radon office at (971) 673-0490.**

LIMITATIONS OF DATA AND PRODUCT LIABILITY

PRO-LAB expressly disclaims any and all liability for any special, incidental, or consequential damages resulting directly or indirectly from the improper use of or improper interpretation of the radon product or its results. Any delays in receipt of the test sample by PRO-LAB shall be the sole responsibility of the purchaser and their legal remedy shall be limited to recourse with their chosen carrier. Additionally, PRO-LAB shall not be responsible for the improper placement of the test canister nor shall PRO-LAB be liable for results derived directly or indirectly from the improper placement of said test canister. PRO-LAB, its agents, its retailers, its distributors, and the manufacturers' sole liability are limited to the cost for the replacement of the test canister itself only.



Jose Figueroa, RMS

NRPP CERT# 109347 RT
NRSB CERT # 18SS007PRO-LAB NRSB # ARL0028
PRO-LAB NEHA ID # 101461AL

James E. McDonnell IV

TEST ID NUMBER: 1259446
DATE RECEIVED: 10/11/2019
REPORT DATE: 10/15/2019

ENVIRONMENTAL INSPECTION SERVICE, INC.
11981 FARGO ROAD NORTHEAST,
AURORA, OR 97002

TEST LOCATION

Clatskanie Elementary School
815 S NEHALEM ST
COLUMBIA COUNTY
Clatskanie, OR 97076

This is a confidential report of the radon samples that were submitted to our laboratory for measurements of radon-222 levels. The results represent the amount of radon that was present in the air during the time of sampling. The radon is measured in our laboratory using the liquid scintillation method (EPA 402-R-92-004). This report will not be released to anyone without your permission except as required by individual state laws and guidelines.

HERE ARE YOUR TEST RESULTS

<u>VIAL #</u>	<u>ROOM TESTED</u>	<u>DATE OPENED</u>	<u>DATE CAPPED</u>	<u>DATE ANALYZED</u>	<u>RADON LEVEL</u>
4813927	1ST FLOOR SPEECH	Oct 04, 2019 2:41 PM	Oct 07, 2019 2:40 PM	Oct 13, 2019 12:24 AM	0.5 pCi/L

THE EPA RECOMMENDS THAT YOU FIX YOUR HOME IF THE RADON LEVEL IS 4 PICOCURIES (PC/L) OR HIGHER. Please read the EPA Citizen's Guide to Radon at www.epa.gov/radon/pubs/citguide.html. Residents of New Jersey should read "Radon Testing and Mitigation: The Basics" at <http://njradon.org/download/mitbas.pdf>. Radon levels less than 4 pCi/L still pose a risk. You may want to take additional measurements because radon levels can vary with the seasons. You may also want to consider doing a long term test to determine the average radon concentrations over a longer period of time. If the radon level is 4.0 pCi/L or higher you should perform either a long-term test or a second short-term test. If the radon level is higher than 10 pCi/L you should perform a second short-term test immediately. **If you would like to learn how to lower your radon levels, or have other questions, please contact your state radon office at (971) 673-0490.**

LIMITATIONS OF DATA AND PRODUCT LIABILITY

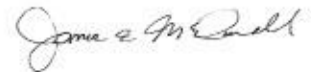
PRO-LAB expressly disclaims any and all liability for any special, incidental, or consequential damages resulting directly or indirectly from the improper use of or improper interpretation of the radon product or its results. Any delays in receipt of the test sample by PRO-LAB shall be the sole responsibility of the purchaser and their legal remedy shall be limited to recourse with their chosen carrier. Additionally, PRO-LAB shall not be responsible for the improper placement of the test canister nor shall PRO-LAB be liable for results derived directly or indirectly from the improper placement of said test canister. PRO-LAB, its agents, its retailers, its distributors, and the manufacturers' sole liability are limited to the cost for the replacement of the test canister itself only.



Jose Figueroa, RMS

NRPP CERT# 109347 RT
NRSB CERT # 18SS007

PRO-LAB NRSB # ARI.0028
PRO-LAB NEHA ID # 101461AL



James E. McDonnell IV

TEST ID NUMBER: 1259445
DATE RECEIVED: 10/11/2019
REPORT DATE: 10/15/2019ENVIRONMENTAL INSPECTION SERVICE, INC.
11981 FARGO ROAD NORTHEAST,
AURORA, OR 97002**TEST LOCATION**Clatskanie Elementary School
815 S NEHALEM ST
COLUMBIA COUNTY
Clatskanie, OR 97016

This is a confidential report of the radon samples that were submitted to our laboratory for measurements of radon-222 levels. The results represent the amount of radon that was present in the air during the time of sampling. The radon is measured in our laboratory using the liquid scintillation method (EPA 402-R-92-004). This report will not be released to anyone without your permission except as required by individual state laws and guidelines.

HERE ARE YOUR TEST RESULTS

<u>VIAL #</u>	<u>ROOM TESTED</u>	<u>DATE OPENED</u>	<u>DATE CAPPED</u>	<u>DATE ANALYZED</u>	<u>RADON LEVEL</u>
4841323	1ST FLOOR SPED	Oct 04, 2019 2:25 PM	Oct 07, 2019 2:40 PM	Oct 13, 2019 12:14 AM	1.9 pCi/L

THE EPA RECOMMENDS THAT YOU FIX YOUR HOME IF THE RADON LEVEL IS 4 PICOCURIES (PCi/L) OR HIGHER.

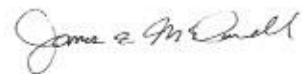
Please read the EPA Citizen's Guide to Radon at www.epa.gov/radon/pubs/citguide.html. Residents of New Jersey should read "Radon Testing and Mitigation: The Basics" at <http://njradon.org/download/mitbas.pdf>. Radon levels less than 4 pCi/L still pose a risk. You may want to take additional measurements because radon levels can vary with the seasons. You may also want to consider doing a long term test to determine the average radon concentrations over a longer period of time. If the radon level is 4.0 pCi/L or higher you should perform either a long-term test or a second short-term test. If the radon level is higher than 10 pCi/L you should perform a second short-term test immediately. **If you would like to learn how to lower your radon levels, or have other questions, please contact your state radon office at (971) 673-0490.**

LIMITATIONS OF DATA AND PRODUCT LIABILITY

PRO-LAB expressly disclaims any and all liability for any special, incidental, or consequential damages resulting directly or indirectly from the improper use of or improper interpretation of the radon product or its results. Any delays in receipt of the test sample by PRO-LAB shall be the sole responsibility of the purchaser and their legal remedy shall be limited to recourse with their chosen carrier. Additionally, PRO-LAB shall not be responsible for the improper placement of the test canister nor shall PRO-LAB be liable for results derived directly or indirectly from the improper placement of said test canister. PRO-LAB, its agents, its retailers, its distributors, and the manufacturers' sole liability are limited to the cost for the replacement of the test canister itself only.



Jose Figueroa, RMS

NRPP CERT# 109347 RT
NRSB CERT # 18SS007PRO-LAB NRSB # ARL0028
PRO-LAB NEHA ID # 101461AL

James E. McDonnell IV

TEST ID NUMBER: 1259439
DATE RECEIVED: 10/11/2019
REPORT DATE: 10/15/2019ENVIRONMENTAL INSPECTION SERVICE, INC.
11981 FARGO ROAD NORTHEAST,
AURORA, OR 97002**TEST LOCATION**Clatskanie Middle & High School
471 BEL AIR DR
COLUMBIA COUNTY
Clatskanie, OR 97016

This is a confidential report of the radon samples that were submitted to our laboratory for measurements of radon-222 levels. The results represent the amount of radon that was present in the air during the time of sampling. The radon is measured in our laboratory using the liquid scintillation method (EPA 402-R-92-004). This report will not be released to anyone without your permission except as required by individual state laws and guidelines.

HERE ARE YOUR TEST RESULTS

<u>VIAL #</u>	<u>ROOM TESTED</u>	<u>DATE OPENED</u>	<u>DATE CAPPED</u>	<u>DATE ANALYZED</u>	<u>RADON LEVEL</u>
4865925	1ST FLOOR RM 114	Oct 04, 2019 6:00 PM	Oct 07, 2019 4:15 PM	Oct 12, 2019 1:53 AM	0.4 pCi/L

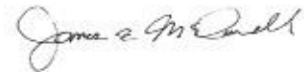
THE EPA RECOMMENDS THAT YOU FIX YOUR HOME IF THE RADON LEVEL IS 4 PICOCURIES (PC/L) OR HIGHER. Please read the EPA Citizen's Guide to Radon at www.epa.gov/radon/pubs/citguide.html. Residents of New Jersey should read "Radon Testing and Mitigation: The Basics" at <http://njradon.org/download/mitbas.pdf>. Radon levels less than 4 pCi/L still pose a risk. You may want to take additional measurements because radon levels can vary with the seasons. You may also want to consider doing a long term test to determine the average radon concentrations over a longer period of time. If the radon level is 4.0 pCi/L or higher you should perform either a long-term test or a second short-term test. If the radon level is higher than 10 pCi/L you should perform a second short-term test immediately. **If you would like to learn how to lower your radon levels, or have other questions, please contact your state radon office at (971) 673-0490.**

LIMITATIONS OF DATA AND PRODUCT LIABILITY

PRO-LAB expressly disclaims any and all liability for any special, incidental, or consequential damages resulting directly or indirectly from the improper use of or improper interpretation of the radon product or its results. Any delays in receipt of the test sample by PRO-LAB shall be the sole responsibility of the purchaser and their legal remedy shall be limited to recourse with their chosen carrier. Additionally, PRO-LAB shall not be responsible for the improper placement of the test canister nor shall PRO-LAB be liable for results derived directly or indirectly from the improper placement of said test canister. PRO-LAB, its agents, its retailers, its distributors, and the manufacturers' sole liability are limited to the cost for the replacement of the test canister itself only.



Jose Figueroa, RMS

NRPP CERT# 109347 RT
NRSB CERT # 18SS007PRO-LAB NRSB # ARL0028
PRO-LAB NEHA ID # 101461AL

James E. McDonnell IV

TEST ID NUMBER: 1259472
DATE RECEIVED: 10/11/2019
REPORT DATE: 10/15/2019

ENVIRONMENTAL INSPECTION SERVICE, INC.
 11981 FARGO ROAD NORTHEAST,
 AURORA, OR 97002

TEST LOCATION

Clatskanie Elementary School
 815 S NEHALEM ST
 COLUMBIA COUNTY
 Clatskanie, OR 97016

This is a confidential report of the radon samples that were submitted to our laboratory for measurements of radon-222 levels. The results represent the amount of radon that was present in the air during the time of sampling. The radon is measured in our laboratory using the liquid scintillation method (EPA 402-R-92-004). This report will not be released to anyone without your permission except as required by individual state laws and guidelines.

HERE ARE YOUR TEST RESULTS

<u>VIAL #</u>	<u>ROOM TESTED</u>	<u>DATE OPENED</u>	<u>DATE CAPPED</u>	<u>DATE ANALYZED</u>	<u>RADON LEVEL</u>
4866065	1ST FLOOR KITCHEN	Oct 04, 2019 2:38 PM	Oct 07, 2019 2:50 PM	Oct 12, 2019 10:05 PM	0.6 pCi/L

THE EPA RECOMMENDS THAT YOU FIX YOUR HOME IF THE RADON LEVEL IS 4 PICOCURIES (PCi/L) OR HIGHER. Please read the EPA Citizen's Guide to Radon at www.epa.gov/radon/pubs/citguide.html. Residents of New Jersey should read "Radon Testing and Mitigation: The Basics" at <http://njradon.org/download/mitbas.pdf>. Radon levels less than 4 pCi/L still pose a risk. You may want to take additional measurements because radon levels can vary with the seasons. You may also want to consider doing a long term test to determine the average radon concentrations over a longer period of time. If the radon level is 4.0 pCi/L or higher you should perform either a long-term test or a second short-term test. If the radon level is higher than 10 pCi/L you should perform a second short-term test immediately. **If you would like to learn how to lower your radon levels, or have other questions, please contact your state radon office at (971) 673-0490.**

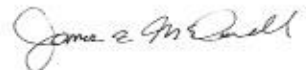
LIMITATIONS OF DATA AND PRODUCT LIABILITY

PRO-LAB expressly disclaims any and all liability for any special, incidental, or consequential damages resulting directly or indirectly from the improper use of or improper interpretation of the radon product or its results. Any delays in receipt of the test sample by PRO-LAB shall be the sole responsibility of the purchaser and their legal remedy shall be limited to recourse with their chosen carrier. Additionally, PRO-LAB shall not be responsible for the improper placement of the test canister nor shall PRO-LAB be liable for results derived directly or indirectly from the improper placement of said test canister. PRO-LAB, its agents, its retailers, its distributors, and the manufacturers' sole liability are limited to the cost for the replacement of the test canister itself only.



Jose Figueroa, RMS
 NRPP CERT# 109347 RT
 NRSB CERT # 18SS007

PRO-LAB NRSB # ARL0028
 PRO-LAB NEHA ID # 101461AI.



James E. McDonnell IV

TEST ID NUMBER: 1259474
DATE RECEIVED: 10/11/2019
REPORT DATE: 10/15/2019ENVIRONMENTAL INSPECTION SERVICE, INC.
11981 FARGO ROAD NORTHEAST,
AURORA, OR 97002**TEST LOCATION**Clatskanie Elementary School
815 S NEHALEM ST
COLUMBIA COUNTY
Clatskanie, OR 97016

This is a confidential report of the radon samples that were submitted to our laboratory for measurements of radon-222 levels. The results represent the amount of radon that was present in the air during the time of sampling. The radon is measured in our laboratory using the liquid scintillation method (EPA 402-R-92-004). This report will not be released to anyone without your permission except as required by individual state laws and guidelines.

HERE ARE YOUR TEST RESULTS

<u>VIAL #</u>	<u>ROOM TESTED</u>	<u>DATE OPENED</u>	<u>DATE CAPPED</u>	<u>DATE ANALYZED</u>	<u>RADON LEVEL</u>
4866186	1ST FLOOR CAFE	Oct 04, 2019 2:40 PM	Oct 07, 2019 2:50 PM	Oct 12, 2019 10:27 PM	0.7 pCi/L

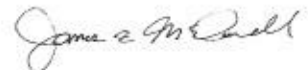
THE EPA RECOMMENDS THAT YOU FIX YOUR HOME IF THE RADON LEVEL IS 4 PICOCURIES (PCi/L) OR HIGHER. Please read the EPA Citizen's Guide to Radon at www.epa.gov/radon/pubs/citguide.html. Residents of New Jersey should read "Radon Testing and Mitigation: The Basics" at <http://njradon.org/download/mitbas.pdf>. Radon levels less than 4 pCi/L still pose a risk. You may want to take additional measurements because radon levels can vary with the seasons. You may also want to consider doing a long term test to determine the average radon concentrations over a longer period of time. If the radon level is 4.0 pCi/L or higher you should perform either a long-term test or a second short-term test. If the radon level is higher than 10 pCi/L you should perform a second short-term test immediately. **If you would like to learn how to lower your radon levels, or have other questions, please contact your state radon office at (971) 673-0490.**

LIMITATIONS OF DATA AND PRODUCT LIABILITY

PRO-LAB expressly disclaims any and all liability for any special, incidental, or consequential damages resulting directly or indirectly from the improper use of or improper interpretation of the radon product or its results. Any delays in receipt of the test sample by PRO-LAB shall be the sole responsibility of the purchaser and their legal remedy shall be limited to recourse with their chosen carrier. Additionally, PRO-LAB shall not be responsible for the improper placement of the test canister nor shall PRO-LAB be liable for results derived directly or indirectly from the improper placement of said test canister. PRO-LAB, its agents, its retailers, its distributors, and the manufacturers' sole liability are limited to the cost for the replacement of the test canister itself only.



Jose Figueroa, RMS

NRPP CERT# 109347 RT
NRSB CERT # 18SS007PRO-LAB NRSB # ARL0028
PRO-LAB NEHA ID # 101461AL

James E. McDonnell IV

TEST ID NUMBER: 1259476
DATE RECEIVED: 10/11/2019
REPORT DATE: 10/15/2019

ENVIRONMENTAL INSPECTION SERVICE, INC.
 11981 FARGO ROAD NORTHEAST,
 AURORA, OR 97002

TEST LOCATION

Clatskanie Elementary School
 815 S NEHALEM ST
 COLUMBIA COUNTY
 Clatskanie, OR 97016

This is a confidential report of the radon samples that were submitted to our laboratory for measurements of radon-222 levels. The results represent the amount of radon that was present in the air during the time of sampling. The radon is measured in our laboratory using the liquid scintillation method (EPA 402-R-92-004). This report will not be released to anyone without your permission except as required by individual state laws and guidelines.

HERE ARE YOUR TEST RESULTS

<u>VIAL #</u>	<u>ROOM TESTED</u>	<u>DATE OPENED</u>	<u>DATE CAPPED</u>	<u>DATE ANALYZED</u>	<u>RADON LEVEL</u>
4814099	1ST FLOOR CAFE	Oct 04, 2019 2:40 PM	Oct 07, 2019 2:50 PM	Oct 12, 2019 10:37 PM	0.5 pCi/L

THE EPA RECOMMENDS THAT YOU FIX YOUR HOME IF THE RADON LEVEL IS 4 PICOCURIES (PCi/L) OR HIGHER. Please read the EPA Citizen's Guide to Radon at www.epa.gov/radon/pubs/citguide.html. Residents of New Jersey should read "Radon Testing and Mitigation: The Basics" at <http://njradon.org/download/mitbas.pdf>. Radon levels less than 4 pCi/L still pose a risk. You may want to take additional measurements because radon levels can vary with the seasons. You may also want to consider doing a long term test to determine the average radon concentrations over a longer period of time. If the radon level is 4.0 pCi/L or higher you should perform either a long-term test or a second short-term test. If the radon level is higher than 10 pCi/L you should perform a second short-term test immediately. **If you would like to learn how to lower your radon levels, or have other questions, please contact your state radon office at (971) 673-0490.**

LIMITATIONS OF DATA AND PRODUCT LIABILITY

PRO-LAB expressly disclaims any and all liability for any special, incidental, or consequential damages resulting directly or indirectly from the improper use of or improper interpretation of the radon product or its results. Any delays in receipt of the test sample by PRO-LAB shall be the sole responsibility of the purchaser and their legal remedy shall be limited to recourse with their chosen carrier. Additionally, PRO-LAB shall not be responsible for the improper placement of the test canister nor shall PRO-LAB be liable for results derived directly or indirectly from the improper placement of said test canister. PRO-LAB, its agents, its retailers, its distributors, and the manufacturers' sole liability are limited to the cost for the replacement of the test canister itself only.



Jose Figueroa, RMS
 NRPP CERT# 109347 RT
 NRSB CERT # 18SS007

PRO-LAB NRSB # ARL0028
 PRO-LAB NEHA ID # 101461AL



James E. McDonnell IV

TEST ID NUMBER: 1259479
DATE RECEIVED: 10/11/2019
REPORT DATE: 10/15/2019ENVIRONMENTAL INSPECTION SERVICE, INC.
11981 FARGO ROAD NORTHEAST,
AURORA, OR 97002**TEST LOCATION**Clatskanie Elementary School
815 S NEHALEM ST
COLUMBIA COUNTY
Clatskanie, OR 97016

This is a confidential report of the radon samples that were submitted to our laboratory for measurements of radon-222 levels. The results represent the amount of radon that was present in the air during the time of sampling. The radon is measured in our laboratory using the liquid scintillation method (EPA 402-R-92-004). This report will not be released to anyone without your permission except as required by individual state laws and guidelines.

HERE ARE YOUR TEST RESULTS

<u>VIAL #</u>	<u>ROOM TESTED</u>	<u>DATE OPENED</u>	<u>DATE CAPPED</u>	<u>DATE ANALYZED</u>	<u>RADON LEVEL</u>
4866101	1ST FLOOR RM 121	Oct 04, 2019 2:56 PM	Oct 07, 2019 2:51 PM	Oct 12, 2019 10:59 PM	0.8 pCi/L


THE EPA RECOMMENDS THAT YOU FIX YOUR HOME IF THE RADON LEVEL IS 4 PICOCURIES (PC/L) OR HIGHER. Please read the EPA Citizen's Guide to Radon at www.epa.gov/radon/pubs/citguide.html. Residents of New Jersey should read "Radon Testing and Mitigation: The Basics" at <http://njradon.org/download/mitbas.pdf>. Radon levels less than 4 pCi/L still pose a risk. You may want to take additional measurements because radon levels can vary with the seasons. You may also want to consider doing a long term test to determine the average radon concentrations over a longer period of time. If the radon level is 4.0 pCi/L or higher you should perform either a long-term test or a second short-term test. If the radon level is higher than 10 pCi/L you should perform a second short-term test immediately. **If you would like to learn how to lower your radon levels, or have other questions, please contact your state radon office at (971) 673-0490.**

LIMITATIONS OF DATA AND PRODUCT LIABILITY

PRO-LAB expressly disclaims any and all liability for any special, incidental, or consequential damages resulting directly or indirectly from the improper use of or improper interpretation of the radon product or its results. Any delays in receipt of the test sample by PRO-LAB shall be the sole responsibility of the purchaser and their legal remedy shall be limited to recourse with their chosen carrier. Additionally, PRO-LAB shall not be responsible for the improper placement of the test canister nor shall PRO-LAB be liable for results derived directly or indirectly from the improper placement of said test canister. PRO-LAB, its agents, its retailers, its distributors, and the manufacturers' sole liability are limited to the cost for the replacement of the test canister itself only.



Jose Figueroa, RMS

NRPP CERT# 109347 RT
NRSB CERT # 18SS007PRO-LAB NRSB # ARL0028
PRO-LAB NEHA ID # 101461AL

James E. McDonnell IV

TEST ID NUMBER: 1259478
DATE RECEIVED: 10/11/2019
REPORT DATE: 10/15/2019

ENVIRONMENTAL INSPECTION SERVICE, INC.
11981 FARGO ROAD NORTHEAST,
AURORA, OR 97002

TEST LOCATION

Clatskanie Elementary School
815 S NEHALEM ST
COLUMBIA COUNTY
Clatskanie, OR 97016

This is a confidential report of the radon samples that were submitted to our laboratory for measurements of radon-222 levels. The results represent the amount of radon that was present in the air during the time of sampling. The radon is measured in our laboratory using the liquid scintillation method (EPA 402-R-92-004). This report will not be released to anyone without your permission except as required by individual state laws and guidelines.

HERE ARE YOUR TEST RESULTS

<u>VIAL #</u>	<u>ROOM TESTED</u>	<u>DATE OPENED</u>	<u>DATE CAPPED</u>	<u>DATE ANALYZED</u>	<u>RADON LEVEL</u>
4866168	1ST FLOOR STAFF	Oct 04, 2019 2:55 PM	Oct 07, 2019 2:50 PM	Oct 12, 2019 10:48 PM	0.7 pCi/L

THE EPA RECOMMENDS THAT YOU FIX YOUR HOME IF THE RADON LEVEL IS 4 PICOCURIES (PC/L) OR HIGHER. Please read the EPA Citizen's Guide to Radon at www.epa.gov/radon/pubs/citguide.html. Residents of New Jersey should read "Radon Testing and Mitigation: The Basics" at <http://njradon.org/download/mitbas.pdf>. Radon levels less than 4 pCi/L still pose a risk. You may want to take additional measurements because radon levels can vary with the seasons. You may also want to consider doing a long term test to determine the average radon concentrations over a longer period of time. If the radon level is 4.0 pCi/L or higher you should perform either a long-term test or a second short-term test. If the radon level is higher than 10 pCi/L you should perform a second short-term test immediately. **If you would like to learn how to lower your radon levels, or have other questions, please contact your state radon office at (971) 673-0490.**

LIMITATIONS OF DATA AND PRODUCT LIABILITY

PRO-LAB expressly disclaims any and all liability for any special, incidental, or consequential damages resulting directly or indirectly from the improper use of or improper interpretation of the radon product or its results. Any delays in receipt of the test sample by PRO-LAB shall be the sole responsibility of the purchaser and their legal remedy shall be limited to recourse with their chosen carrier. Additionally, PRO-LAB shall not be responsible for the improper placement of the test canister nor shall PRO-LAB be liable for results derived directly or indirectly from the improper placement of said test canister. PRO-LAB, its agents, its retailers, its distributors, and the manufacturers' sole liability are limited to the cost for the replacement of the test canister itself only.



Jose Figueroa, RMS

NRPP CERT# 109347 RT
NRSB CERT # 18SS007

PRO-LAB NRSB # ARI.0028
PRO-LAB NEHA ID # 101461AL



James E. McDonnell IV

TEST ID NUMBER: 1259481
DATE RECEIVED: 10/11/2019
REPORT DATE: 10/15/2019ENVIRONMENTAL INSPECTION SERVICE, INC.
11981 FARGO ROAD NORTHEAST,
AURORA, OR 97002**TEST LOCATION**Clatskanie Elementary School
815 S NEHALEM ST
COLUMBIA COUNTY
Clatskanie, OR 97016

This is a confidential report of the radon samples that were submitted to our laboratory for measurements of radon-222 levels. The results represent the amount of radon that was present in the air during the time of sampling. The radon is measured in our laboratory using the liquid scintillation method (EPA 402-R-92-004). This report will not be released to anyone without your permission except as required by individual state laws and guidelines.

HERE ARE YOUR TEST RESULTS

<u>VIAL #</u>	<u>ROOM TESTED</u>	<u>DATE OPENED</u>	<u>DATE CAPPED</u>	<u>DATE ANALYZED</u>	<u>RADON LEVEL</u>
4865990	1ST FLOOR LIB (REAR)	Oct 04, 2019 2:58 PM	Oct 07, 2019 2:52 PM	Oct 12, 2019 11:10 PM	1.4 pCi/L

THE EPA RECOMMENDS THAT YOU FIX YOUR HOME IF THE RADON LEVEL IS 4 PICOCURIES (PCi/L) OR HIGHER.


Please read the EPA Citizen's Guide to Radon at www.epa.gov/radon/pubs/citguide.html. Residents of New Jersey should read "Radon Testing and Mitigation: The Basics" at <http://njradon.org/download/mitbas.pdf>. Radon levels less than 4 pCi/L still pose a risk. You may want to take additional measurements because radon levels can vary with the seasons. You may also want to consider doing a long term test to determine the average radon concentrations over a longer period of time. If the radon level is 4.0 pCi/L or higher you should perform either a long-term test or a second short-term test. If the radon level is higher than 10 pCi/L you should perform a second short-term test immediately. **If you would like to learn how to lower your radon levels, or have other questions, please contact your state radon office at (971) 673-0490.**

LIMITATIONS OF DATA AND PRODUCT LIABILITY

PRO-LAB expressly disclaims any and all liability for any special, incidental, or consequential damages resulting directly or indirectly from the improper use of or improper interpretation of the radon product or its results. Any delays in receipt of the test sample by PRO-LAB shall be the sole responsibility of the purchaser and their legal remedy shall be limited to recourse with their chosen carrier. Additionally, PRO-LAB shall not be responsible for the improper placement of the test canister nor shall PRO-LAB be liable for results derived directly or indirectly from the improper placement of said test canister. PRO-LAB, its agents, its retailers, its distributors, and the manufacturers' sole liability are limited to the cost for the replacement of the test canister itself only.



Jose Figueroa, RMS

NRPP CERT# 109347 RT
NRSB CERT # 18SS007PRO-LAB NRSB # ARI.0028
PRO-LAB NEHA ID # 101461AL

James E. McDonnell IV

TEST ID NUMBER: 1259485
DATE RECEIVED: 10/11/2019
REPORT DATE: 10/15/2019ENVIRONMENTAL INSPECTION SERVICE, INC.
11981 FARGO ROAD NORTHEAST,
AURORA, OR 97002**TEST LOCATION**
Clatskanie Elementary School
815 S NEHALEM ST
COLUMBIA COUNTY
Clatskanie, OR 97016

This is a confidential report of the radon samples that were submitted to our laboratory for measurements of radon-222 levels. The results represent the amount of radon that was present in the air during the time of sampling. The radon is measured in our laboratory using the liquid scintillation method (EPA 402-R-92-004). This report will not be released to anyone without your permission except as required by individual state laws and guidelines.

HERE ARE YOUR TEST RESULTS

<u>VIAL #</u>	<u>ROOM TESTED</u>	<u>DATE OPENED</u>	<u>DATE CAPPED</u>	<u>DATE ANALYZED</u>	<u>RADON LEVEL</u>
4865938	1ST FLOOR LIB (FRONT)	Oct 04, 2019 3:00 PM	Oct 07, 2019 2:52 PM	Oct 12, 2019 11:31 PM	1.0 pCi/L

THE EPA RECOMMENDS THAT YOU FIX YOUR HOME IF THE RADON LEVEL IS 4 PICOCURIES (PCi/L) OR HIGHER. Please read the EPA Citizen's Guide to Radon at www.epa.gov/radon/pubs/citguide.html. Residents of New Jersey should read "Radon Testing and Mitigation: The Basics" at <http://njradon.org/download/mitbas.pdf>. Radon levels less than 4 pCi/L still pose a risk. You may want to take additional measurements because radon levels can vary with the seasons. You may also want to consider doing a long term test to determine the average radon concentrations over a longer period of time. If the radon level is 4.0 pCi/L or higher you should perform either a long-term test or a second short-term test. If the radon level is higher than 10 pCi/L you should perform a second short-term test immediately. **If you would like to learn how to lower your radon levels, or have other questions, please contact your state radon office at (971) 673-0490.**

LIMITATIONS OF DATA AND PRODUCT LIABILITY

PRO-LAB expressly disclaims any and all liability for any special, incidental, or consequential damages resulting directly or indirectly from the improper use of or improper interpretation of the radon product or its results. Any delays in receipt of the test sample by PRO-LAB shall be the sole responsibility of the purchaser and their legal remedy shall be limited to recourse with their chosen carrier. Additionally, PRO-LAB shall not be responsible for the improper placement of the test canister nor shall PRO-LAB be liable for results derived directly or indirectly from the improper placement of said test canister. PRO-LAB, its agents, its retailers, its distributors, and the manufacturers' sole liability are limited to the cost for the replacement of the test canister itself only.

Jose Figueroa, RMS
NRPP CERT# 109347 RT
NRSB CERT # 18SS007PRO-LAB NRSB # ARI.0028
PRO-LAB NEHA ID # 101461AL

James E. McDonnell IV

TEST ID NUMBER: 1259483
DATE RECEIVED: 10/11/2019
REPORT DATE: 10/15/2019ENVIRONMENTAL INSPECTION SERVICE, INC.
11981 FARGO ROAD NORTHEAST,
AURORA, OR 97002**TEST LOCATION**Clatskanie Elementary School
815 S NEHALEM ST
COLUMBIA COUNTY
Clatskanie, OR 97016

This is a confidential report of the radon samples that were submitted to our laboratory for measurements of radon-222 levels. The results represent the amount of radon that was present in the air during the time of sampling. The radon is measured in our laboratory using the liquid scintillation method (EPA 402-R-92-004). This report will not be released to anyone without your permission except as required by individual state laws and guidelines.

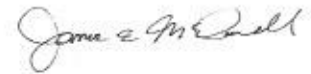
HERE ARE YOUR TEST RESULTS

<u>VIAL #</u>	<u>ROOM TESTED</u>	<u>DATE OPENED</u>	<u>DATE CAPPED</u>	<u>DATE ANALYZED</u>	<u>RADON LEVEL</u>
4866009	1ST FLOOR LIB (FRONT)	Oct 04, 2019 3:00 PM	Oct 07, 2019 2:52 PM	Oct 12, 2019 11:20 PM	0.9 pCi/L

THE EPA RECOMMENDS THAT YOU FIX YOUR HOME IF THE RADON LEVEL IS 4 PICOCURIES (PC/L) OR HIGHER. Please read the EPA Citizen's Guide to Radon at www.epa.gov/radon/pubs/citguide.html. Residents of New Jersey should read "Radon Testing and Mitigation: The Basics" at <http://njradon.org/download/mitbas.pdf>. Radon levels less than 4 pCi/L still pose a risk. You may want to take additional measurements because radon levels can vary with the seasons. You may also want to consider doing a long term test to determine the average radon concentrations over a longer period of time. If the radon level is 4.0 pCi/L or higher you should perform either a long-term test or a second short-term test. If the radon level is higher than 10 pCi/L you should perform a second short-term test immediately. **If you would like to learn how to lower your radon levels, or have other questions, please contact your state radon office at (971) 673-0490.**

LIMITATIONS OF DATA AND PRODUCT LIABILITY

PRO-LAB expressly disclaims any and all liability for any special, incidental, or consequential damages resulting directly or indirectly from the improper use of or improper interpretation of the radon product or its results. Any delays in receipt of the test sample by PRO-LAB shall be the sole responsibility of the purchaser and their legal remedy shall be limited to recourse with their chosen carrier. Additionally, PRO-LAB shall not be responsible for the improper placement of the test canister nor shall PRO-LAB be liable for results derived directly or indirectly from the improper placement of said test canister. PRO-LAB, its agents, its retailers, its distributors, and the manufacturers' sole liability are limited to the cost for the replacement of the test canister itself only.

Jose Figueroa, RMS
NRPP CERT# 109347 RT
NRSB CERT # 18SS007

James E. McDonnell IV

PRO-LAB NRSB # ARL0028
PRO-LAB NEHA ID # 101461AL

TEST ID NUMBER: 1259489
DATE RECEIVED: 10/11/2019
REPORT DATE: 10/15/2019

ENVIRONMENTAL INSPECTION SERVICE, INC.
 11981 FARGO ROAD NORTHEAST,
 AURORA, OR 97002

TEST LOCATION

Clatskanie Elementary School
 815 S NEHALEM ST
 COLUMBIA COUNTY
 Clatskanie, OR 97016

This is a confidential report of the radon samples that were submitted to our laboratory for measurements of radon-222 levels. The results represent the amount of radon that was present in the air during the time of sampling. The radon is measured in our laboratory using the liquid scintillation method (EPA 402-R-92-004). This report will not be released to anyone without your permission except as required by individual state laws and guidelines.

HERE ARE YOUR TEST RESULTS

<u>VIAL #</u>	<u>ROOM TESTED</u>	<u>DATE OPENED</u>	<u>DATE CAPPED</u>	<u>DATE ANALYZED</u>	<u>RADON LEVEL</u>
4866060	1ST FLOOR RM 209	Oct 04, 2019 3:05 PM	Oct 07, 2019 2:54 PM	Oct 12, 2019 11:52 PM	0.5 pCi/L

THE EPA RECOMMENDS THAT YOU FIX YOUR HOME IF THE RADON LEVEL IS 4 PICOCURIES (PCi/L) OR HIGHER. Please read the EPA Citizen's Guide to Radon at www.epa.gov/radon/pubs/citguide.html. Residents of New Jersey should read "Radon Testing and Mitigation: The Basics" at <http://njradon.org/download/mitbas.pdf>. Radon levels less than 4 pCi/L still pose a risk. You may want to take additional measurements because radon levels can vary with the seasons. You may also want to consider doing a long term test to determine the average radon concentrations over a longer period of time. If the radon level is 4.0 pCi/L or higher you should perform either a long-term test or a second short-term test. If the radon level is higher than 10 pCi/L you should perform a second short-term test immediately. **If you would like to learn how to lower your radon levels, or have other questions, please contact your state radon office at (971) 673-0490.**

LIMITATIONS OF DATA AND PRODUCT LIABILITY

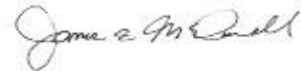
PRO-LAB expressly disclaims any and all liability for any special, incidental, or consequential damages resulting directly or indirectly from the improper use of or improper interpretation of the radon product or its results. Any delays in receipt of the test sample by PRO-LAB shall be the sole responsibility of the purchaser and their legal remedy shall be limited to recourse with their chosen carrier. Additionally, PRO-LAB shall not be responsible for the improper placement of the test canister nor shall PRO-LAB be liable for results derived directly or indirectly from the improper placement of said test canister. PRO-LAB, its agents, its retailers, its distributors, and the manufacturers' sole liability are limited to the cost for the replacement of the test canister itself only.



Jose Figueroa, RMS

NRPP CERT# 109347 RT
 NRSB CERT # 18SS007

PRO-LAB NRSB # ARI.0028
 PRO-LAB NEHA ID # 101461AL



James E. McDonnell IV

TEST ID NUMBER: 1259488
DATE RECEIVED: 10/11/2019
REPORT DATE: 10/15/2019

ENVIRONMENTAL INSPECTION SERVICE, INC.
 11981 FARGO ROAD NORTHEAST,
 AURORA, OR 97002

TEST LOCATION

Clatskanie Elementary School
 815 S NEHALEM ST
 COLUMBIA COUNTY
 Clatskanie, OR 97016

This is a confidential report of the radon samples that were submitted to our laboratory for measurements of radon-222 levels. The results represent the amount of radon that was present in the air during the time of sampling. The radon is measured in our laboratory using the liquid scintillation method (EPA 402-R-92-004). This report will not be released to anyone without your permission except as required by individual state laws and guidelines.

HERE ARE YOUR TEST RESULTS

<u>VIAL #</u>	<u>ROOM TESTED</u>	<u>DATE OPENED</u>	<u>DATE CAPPED</u>	<u>DATE ANALYZED</u>	<u>RADON LEVEL</u>
4590781	1ST FLOOR LIB DUP	Oct 04, 2019 3:00 PM	Oct 07, 2019 2:52 PM	Oct 12, 2019 11:42 PM	0.9 pCi/L

THE EPA RECOMMENDS THAT YOU FIX YOUR HOME IF THE RADON LEVEL IS 4 PICOCURIES (PCi/L) OR HIGHER. Please read the EPA Citizen's Guide to Radon at www.epa.gov/radon/pubs/citguide.html. Residents of New Jersey should read "Radon Testing and Mitigation: The Basics" at <http://njradon.org/download/mitbas.pdf>. Radon levels less than 4 pCi/L still pose a risk. You may want to take additional measurements because radon levels can vary with the seasons. You may also want to consider doing a long term test to determine the average radon concentrations over a longer period of time. If the radon level is 4.0 pCi/L or higher you should perform either a long-term test or a second short-term test. If the radon level is higher than 10 pCi/L, you should perform a second short-term test immediately. **If you would like to learn how to lower your radon levels, or have other questions, please contact your state radon office at (971) 673-0490.**

LIMITATIONS OF DATA AND PRODUCT LIABILITY

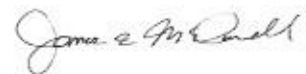
PRO-LAB expressly disclaims any and all liability for any special, incidental, or consequential damages resulting directly or indirectly from the improper use of or improper interpretation of the radon product or its results. Any delays in receipt of the test sample by PRO-LAB shall be the sole responsibility of the purchaser and their legal remedy shall be limited to recourse with their chosen carrier. Additionally, PRO-LAB shall not be responsible for the improper placement of the test canister nor shall PRO-LAB be liable for results derived directly or indirectly from the improper placement of said test canister. PRO-LAB, its agents, its retailers, its distributors, and the manufacturers' sole liability are limited to the cost for the replacement of the test canister itself only.



Jose Figueroa, RMS

NRPP CERT# 109347 RT
 NRSB CERT # 18SS007

PRO-LAB NRSB # ARI.0028
 PRO-LAB NEHA ID # 101461AL



James E. McDonnell IV

TEST ID NUMBER: 1259491
DATE RECEIVED: 10/11/2019
REPORT DATE: 10/15/2019

ENVIRONMENTAL INSPECTION SERVICE, INC.
11981 FARGO ROAD NORTHEAST,
AURORA, OR 97002

TEST LOCATION

Clatskanie Elementary School
815 S NEHALEM ST
COLUMBIA COUNTY
Clatskanie, OR 97016

This is a confidential report of the radon samples that were submitted to our laboratory for measurements of radon-222 levels. The results represent the amount of radon that was present in the air during the time of sampling. The radon is measured in our laboratory using the liquid scintillation method (EPA 402-R-92-004). This report will not be released to anyone without your permission except as required by individual state laws and guidelines.

HERE ARE YOUR TEST RESULTS

<u>VIAL #</u>	<u>ROOM TESTED</u>	<u>DATE OPENED</u>	<u>DATE CAPPED</u>	<u>DATE ANALYZED</u>	<u>RADON LEVEL</u>
4865968	1ST FLOOR RM 201	Oct 04, 2019 3:10 PM	Oct 07, 2019 2:55 PM	Oct 13, 2019 12:03 AM	0.6 pCi/L

THE EPA RECOMMENDS THAT YOU FIX YOUR HOME IF THE RADON LEVEL IS 4 PICOCURIES (PCi/L) OR HIGHER. Please read the EPA Citizen's Guide to Radon at www.epa.gov/radon/pubs/citguide.html. Residents of New Jersey should read "Radon Testing and Mitigation: The Basics" at <http://njradon.org/download/mitbas.pdf>. Radon levels less than 4 pCi/L still pose a risk. You may want to take additional measurements because radon levels can vary with the seasons. You may also want to consider doing a long term test to determine the average radon concentrations over a longer period of time. If the radon level is 4.0 pCi/L or higher you should perform either a long-term test or a second short-term test. If the radon level is higher than 10 pCi/L you should perform a second short-term test immediately. **If you would like to learn how to lower your radon levels, or have other questions, please contact your state radon office at (971) 673-0490.**

LIMITATIONS OF DATA AND PRODUCT LIABILITY

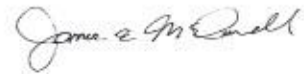
PRO-LAB expressly disclaims any and all liability for any special, incidental, or consequential damages resulting directly or indirectly from the improper use of or improper interpretation of the radon product or its results. Any delays in receipt of the test sample by PRO-LAB shall be the sole responsibility of the purchaser and their legal remedy shall be limited to recourse with their chosen carrier. Additionally, PRO-LAB shall not be responsible for the improper placement of the test canister nor shall PRO-LAB be liable for results derived directly or indirectly from the improper placement of said test canister. PRO-LAB, its agents, its retailers, its distributors, and the manufacturers' sole liability are limited to the cost for the replacement of the test canister itself only.



Jose Figueroa, RMS

NRPP CERT# 109347 RT
NRSB CERT # 18SS007

PRO-LAB NRSB # ARL0028
PRO-LAB NEHA ID # 101461AL



James E. McDonnell IV

TEST ID NUMBER: 1259456
DATE RECEIVED: 10/11/2019
REPORT DATE: 10/15/2019

ENVIRONMENTAL INSPECTION SERVICE, INC.
 11981 FARGO ROAD NORTHEAST,
 AURORA, OR 97002

TEST LOCATION

Clatskanie Elementary School
 815 S NEHALEM ST
 COLUMBIA COUNTY
 Clatskanie, OR 97016

This is a confidential report of the radon samples that were submitted to our laboratory for measurements of radon-222 levels. The results represent the amount of radon that was present in the air during the time of sampling. The radon is measured in our laboratory using the liquid scintillation method (EPA 402-R-92-004). This report will not be released to anyone without your permission except as required by individual state laws and guidelines.

HERE ARE YOUR TEST RESULTS

<u>VIAL #</u>	<u>ROOM TESTED</u>	<u>DATE OPENED</u>	<u>DATE CAPPED</u>	<u>DATE ANALYZED</u>	<u>RADON LEVEL</u>
4866135	1ST FLOOR COPY	Oct 04, 2019 2:40 PM	Oct 07, 2019 2:45 PM	Oct 13, 2019 1:29 AM	1.7 pCi/L

THE EPA RECOMMENDS THAT YOU FIX YOUR HOME IF THE RADON LEVEL IS 4 PICOCURIES (PC/L) OR HIGHER.

Please read the EPA Citizen's Guide to Radon at www.epa.gov/radon/pubs/citguide.html. Residents of New Jersey should read "Radon Testing and Mitigation: The Basics" at <http://njradon.org/download/mitbas.pdf>. Radon levels less than 4 pCi/L still pose a risk. You may want to take additional measurements because radon levels can vary with the seasons. You may also want to consider doing a long term test to determine the average radon concentrations over a longer period of time. If the radon level is 4.0 pCi/L or higher you should perform either a long-term test or a second short-term test. If the radon level is higher than 10 pCi/L you should perform a second short-term test immediately. **If you would like to learn how to lower your radon levels, or have other questions, please contact your state radon office at (971) 673-0490.**

LIMITATIONS OF DATA AND PRODUCT LIABILITY

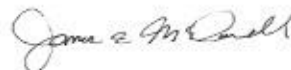
PRO-LAB expressly disclaims any and all liability for any special, incidental, or consequential damages resulting directly or indirectly from the improper use of or improper interpretation of the radon product or its results. Any delays in receipt of the test sample by PRO-LAB shall be the sole responsibility of the purchaser and their legal remedy shall be limited to recourse with their chosen carrier. Additionally, PRO-LAB shall not be responsible for the improper placement of the test canister nor shall PRO-LAB be liable for results derived directly or indirectly from the improper placement of said test canister. PRO-LAB, its agents, its retailers, its distributors, and the manufacturers' sole liability are limited to the cost for the replacement of the test canister itself only.



Jose Figueroa, RMS

NRPP CERT# 109347 RT
 NRSB CERT # 18SS007

PRO-LAB NRSB # ARL0028
 PRO-LAB NEHA ID # 101461AL



James E. McDonnell IV

TEST ID NUMBER: 1259493
DATE RECEIVED: 10/11/2019
REPORT DATE: 10/15/2019

ENVIRONMENTAL INSPECTION SERVICE, INC.
 11981 FARGO ROAD NORTHEAST,
 AURORA, OR 97002

TEST LOCATION

Clatskanie Elementary School
 815 S NEHALEM ST
 COLUMBIA COUNTY
 Clatskanie, OR 97016

This is a confidential report of the radon samples that were submitted to our laboratory for measurements of radon-222 levels. The results represent the amount of radon that was present in the air during the time of sampling. The radon is measured in our laboratory using the liquid scintillation method (EPA 402-R-92-004). This report will not be released to anyone without your permission except as required by individual state laws and guidelines.

HERE ARE YOUR TEST RESULTS

<u>VIAL #</u>	<u>ROOM TESTED</u>	<u>DATE OPENED</u>	<u>DATE CAPPED</u>	<u>DATE ANALYZED</u>	<u>RADON LEVEL</u>
4841371	1ST FLOOR RM 207	Oct 04, 2019 3:10 PM	Oct 07, 2019 2:55 PM	Oct 13, 2019 6:50 AM	0.2 pCi/L

THE EPA RECOMMENDS THAT YOU FIX YOUR HOME IF THE RADON LEVEL IS 4 PICOCURIES (PC/L) OR HIGHER. Please read the EPA Citizen's Guide to Radon at www.epa.gov/radon/pubs/citguide.html. Residents of New Jersey should read "Radon Testing and Mitigation: The Basics" at <http://njradon.org/download/mitbas.pdf>. Radon levels less than 4 pCi/L still pose a risk. You may want to take additional measurements because radon levels can vary with the seasons. You may also want to consider doing a long term test to determine the average radon concentrations over a longer period of time. If the radon level is 4.0 pCi/L or higher you should perform either a long-term test or a second short-term test. If the radon level is higher than 10 pCi/L you should perform a second short-term test immediately. **If you would like to learn how to lower your radon levels, or have other questions, please contact your state radon office at (971) 673-0490.**

LIMITATIONS OF DATA AND PRODUCT LIABILITY


PRO-LAB expressly disclaims any and all liability for any special, incidental, or consequential damages resulting directly or indirectly from the improper use of or improper interpretation of the radon product or its results. Any delays in receipt of the test sample by PRO-LAB shall be the sole responsibility of the purchaser and their legal remedy shall be limited to recourse with their chosen carrier. Additionally, PRO-LAB shall not be responsible for the improper placement of the test canister nor shall PRO-LAB be liable for results derived directly or indirectly from the improper placement of said test canister. PRO-LAB, its agents, its retailers, its distributors, and the manufacturers' sole liability are limited to the cost for the replacement of the test canister itself only.



Jose Figueroa, RMS

NRPP CERT# 109347 RT
 NRSB CERT # 18SS007

PRO-LAB NRSB # ARI.0028
 PRO-LAB NEHA ID # 101461AL



James E. McDonnell IV

APPENDIX 2.0

CHAIN'S OF CUSTODY (COC'S)

RADON TEST CHAIN OF CUSTODY

CLIENT (ADDRESS) Environmental Inspection Services
1581 Fargo Road
Axton, Oregon 97004

TEST ADDRESS Clatskanie Elementary School
815 S. Nehalem Street
Clatskanie, Oregon 97016

Serial No. Location Cap off time Date Cap on time Date Results

Lower
Level

Serial No.	Location	Cap off time	Date	Cap on time	Date	Results
4841323	Spch	2:25	10/19	2:40	10/19	
4841327	Spach	2:27		2:41		
4841310	Spn A	2:29		2:41		
4866068	RT (room)	2:30		2:45		
4866105	RT (near)	2:32		2:45		
4866207	RT (room)	2:32		2:45		
4866261	Art dup	2:35		2:45		
4866135	copy	2:40		2:45		
4866010	copy (dup)	2:40		2:45		
4866315	gym	2:33		2:44		
4841459		2:33		2:44		
4590716		2:33		2:44		
4865804		2:33		2:44		
4866065	Kitchen ^{copy}	2:38		2:50		
4866186	cafe	2:30		2:50		
4814095	cafe	2:40		2:50		
4866168	stair	2:55		2:50		
4866101	RM 21	2:56		2:51		
4865990	Lib (room)	2:58		2:52		
4866009	Lib (ART)	3:00		2:52		
4865938	Lib (ART)	3:00		2:52		
4590781	Lib dup	3:00		2:52		
4866260	Rm 205	3:05		2:54		
4865988	RM 201	3:10		2:51		
4841371	RM 207	3:10		2:55		
4865946	Rm 203	3:10		2:56		

RADON TEST CHAIN OF CUSTODY

CLIENT (ADDRESS) Environmental Inspection Services
11821 Farago Road
Amveta, Oregon 97002

TEST ADDRESS Clatskanie Elementary School
815 S. Nehalem Street
Clatskanie, Oregon 97016

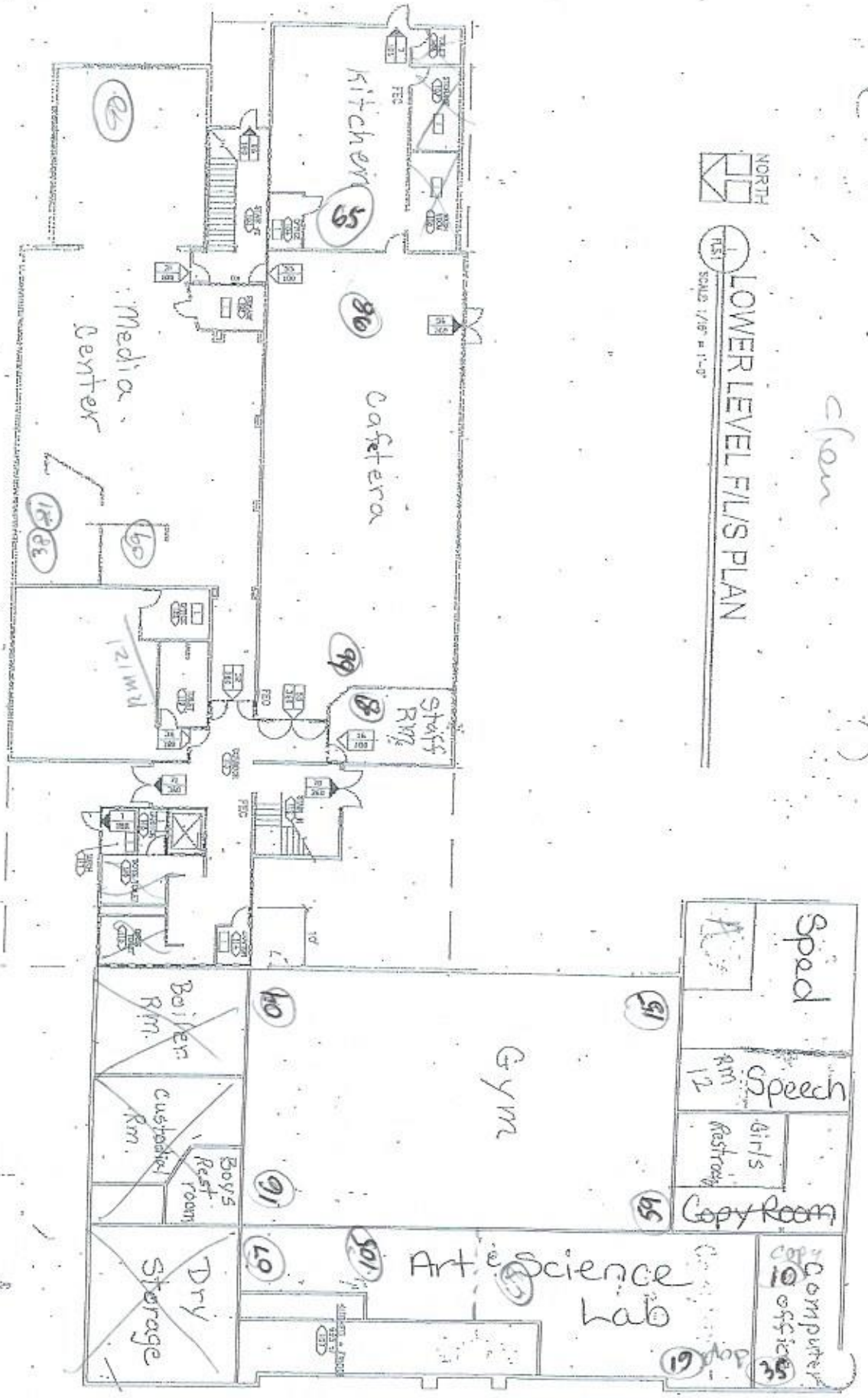
Serial No. Location Cap off time Date Cap on time Date Results

Serial No.	Location	Cap off time	Date	Cap on time	Date	Results
4866000	RM 204	3:13	10/4/08	3:57		
4866014	RM 204	3:13		3:57		
4866292	RM 206	3:14		3:57		
4841374	CARD RM14	3:17		3:00		
4841421	CARD RM15	3:20		3:00		
4841411	RM 16	3:22		3:03		
4865894	RM 17	3:23		3:02		
4841327	RM 17 dup	3:23		3:04		
4866204	Stoff	3:25		3:04		
4841294	gym	3:30		3:03		
4866030	gym	3:30		3:02		
4866031	gym	3:30		3:03		
4865908	gym	3:30		3:03		
4841445	RM 22	3:33		3:05		
4841313	RM 21	3:35		3:06		
4769046	RM 20	3:37		3:05		
4866157	RM 19	3:40		3:05		
4841461	RM 18	3:42		3:05		
4590538	RM 18 dup	3:42		3:05		



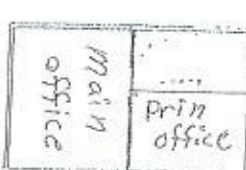
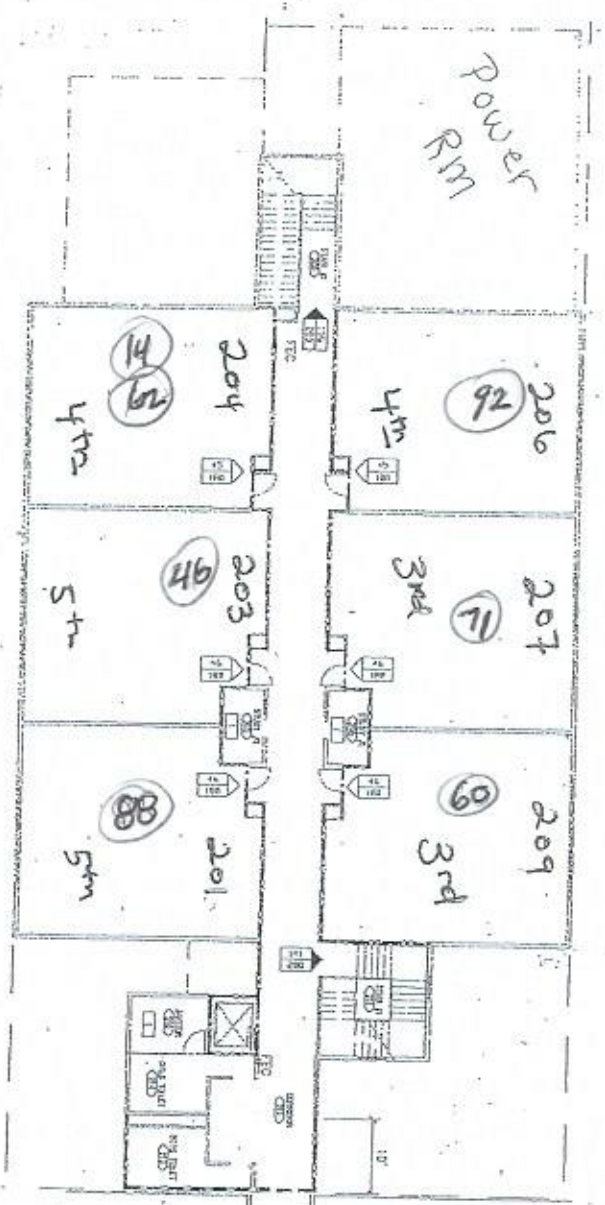
LOWER LEVEL FILLS PLAN

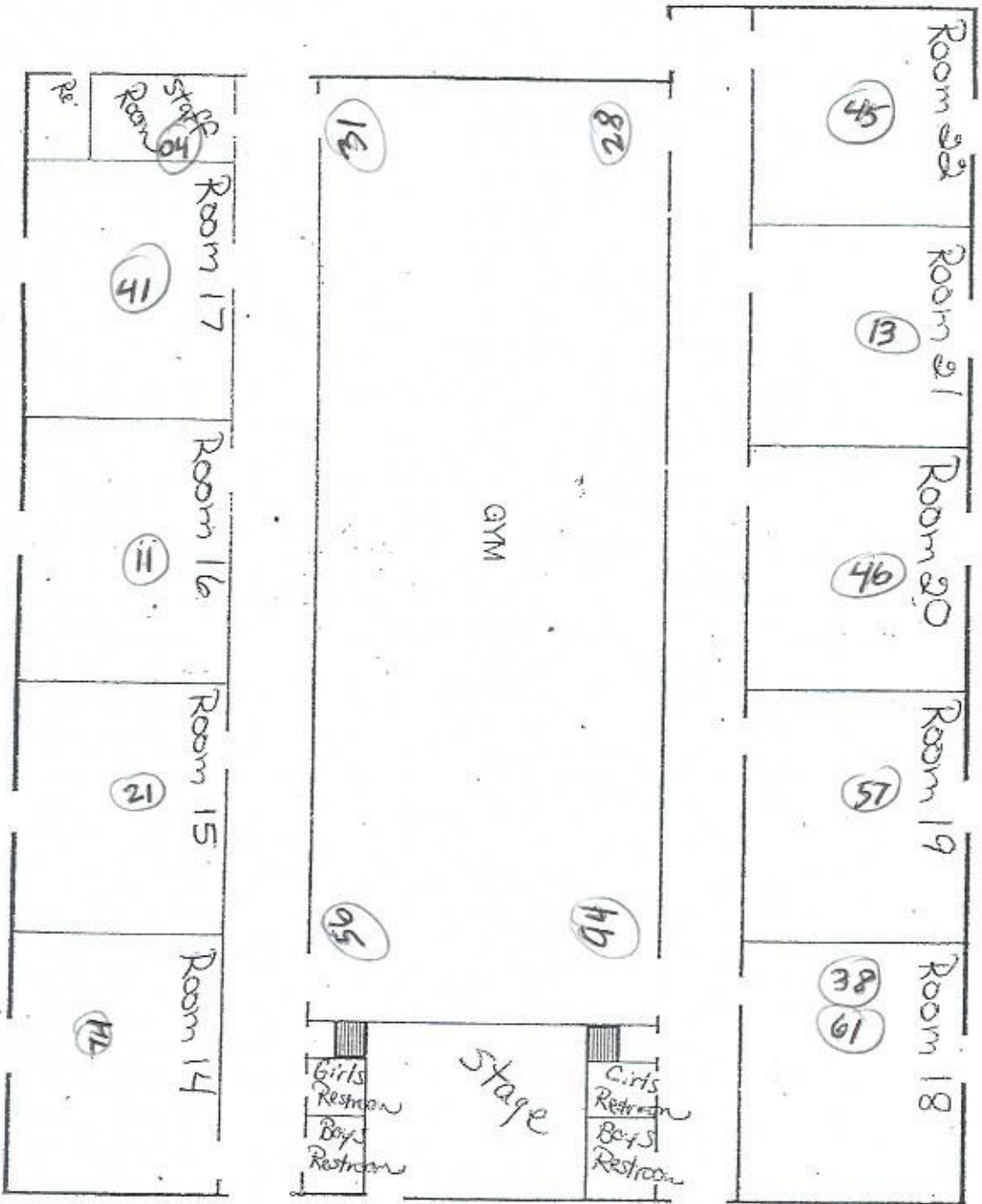
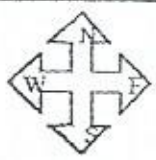
Chon



Chen

NORTH
UPPER LEVEL FILLS PLAN
SCALE 1/8" = 1'-0"





Clatskanie Elem. School-Cardiff Bldg.

APPENDIX 4.0
RADON REGULATION

2017 ORS 332.345¹

Tests of schools for elevated levels of radon

- plan
- results

- (1) A school district shall develop a plan for testing schools for elevated levels of radon. At a minimum, plans developed under this subsection must:
 - (a) Provide for the testing of radon in any frequently occupied room in contact with the ground or located above a basement or a crawlspace; **and**
 - (b) Provide for the testing of radon in a school at least once every 10 years.
- (2) The Oregon Health Authority shall develop model plans for school districts to follow in implementing the requirements of this section. The authority shall seek the input of the Oregon School Boards Association in developing the model plans.
- (3) Results of a test performed under this section must be:
 - (a) Provided to the district school board;
 - (b) Provided to the authority in a manner prescribed by the authority; **and**
 - (c) Made readily available to parents, guardians, students, school employees, school volunteers, administrators and community representatives at the school's office or school district's office or on a website for the school or school district.
- (4) Information provided and made available under subsection (3) of this section must include the level of radon at which the United States Environmental Protection Agency recommends schools take action to reduce indoor radon concentrations. [Formerly 332.167]

Note: Section 3, chapter 729, Oregon Laws 2015, provides:

Sec. 3. (1) A school district shall submit the plan developed under section 2 of this 2015 Act [332.345 (Tests of schools for elevated levels of radon)] to the Oregon Health Authority on or before September 1, 2016.

(2) Notwithstanding section 2 (1)(b) of this 2015 Act, plans developed under section 2 of this 2015 Act shall require initial testing of schools for elevated levels of radon on or before January 1, 2021.

(2) c.729 §3]

Note: See note under 332.341 (Provision of information to school districts about elevated levels of radon).

¹ Legislative Counsel Committee, *CHAPTER 332—Local Administration of Education*, https://www.oregonlegislature.gov/bills_laws/ors/ors332.html (2017) (last accessed Mar. 30, 2018).

APPENDIX 5.0
CONSULTANT RESUME

RESUME

CHARLES ARTHUR SPEAR

**CENTER FOR ENVIRONMENTAL RESEARCH
& TECHNOLOGY RADON TRAINING**

**CERTIFIED ENVIRONMENTAL CONSULTANT (CEC)
ENVIRONMENTAL ASSESSMENT ASSOCIATION**

**REGISTERED ENVIRONMENTAL ASSESSOR
(Former) REA - 01241**

AHERA INSPECTOR (EPA CERTIFICATION NO. IR-19-2439A)

**CERTIFIED ENVIRONMENTAL INSPECTOR
CEI - 10364**

Professional Background

Charles A. Spear, President and founder of Environmental Inspection Services has over 30 years technical experience ranging from facility and school district radon testing to site remediation. Technical employment included food technologist to hazardous waste site remediation at Federal SUPERFUND sites from California to Maryland. Mr. Spear has successfully performed over 3,000 Phase One, Phase Two, and Phase Three Environmental Site Assessment inspections and multiple radon inspections and surveys on properties from California to Alaska and east to Maryland.

Mr. Spear has managed such projects as spilled mustard gas and organophosphate demilitarization and remediation as a decontamination sergeant of the U.S. Army Chemical Corps Technical Escort Unit Drill & Transfer Unit at Umatilla Army Depot and removal of leaking solvent underground storage tanks in California and Oregon. Additional experience included supervision as a USARMY NBC Specialist of focused remediation at the Federal Superfund site known as Aberdeen Proving Grounds, Maryland (Michaelsville Landfill). EIS does not conduct or perform geological work. Geologic work is referred to a state registered geologist.

Specifically, Mr. Spear has worked with clients such as: numerous school districts, Housing & Urban Development, the International Fabric Care Industry (IFI), the U.S. Environmental Protection Agency, The U.S. Department of Defense, The Oregon Department of Environmental Quality (ODEQ), The Oregon Department of Forestry, INTEL, Sun Microsystems, IBM, Rohm & Haas, General Electric, AT&T, Texaco, Unocal, BP, Lockheed Missile and Space Center, FMC Corporation, Oregon Department of Fish & Wildlife, Washington Department of Fish & Wildlife, City of Beaverton, City of Hillsboro, City of Corvallis, Housing Authority of Portland, Northwest Oregon Housing Authority, Washington County Department of Housing, Housing & Urban Development, numerous lenders and mortgage companies, many private development and site remedial site projects, and many attorneys and investors.

Mr. Spear managed complex solvent tank farm removals at Xidex Corporation in Sunnyvale, California and was the site cleanup manager at the Rose City Plating Site currently developed as the Oregon Convention Center. Mr. Spear is a certified hazardous waste professional who has coupled military experience as a Nuclear, Biological and Chemical Specialist (U.S. Army MOS 54E20) with experience as a professional industrial and process research engineer in both the corrugated paper and petroleum industries.

Mr. Spear has managed food industry quality control as an inplant food technologist and prepared cost reduction programs as a corrugated boxboard industrial engineer in Dallas, Texas. He is currently registered with the states of California, Washington, and Oregon and is an active member of the national respected Environmental Assessment Association. Due diligence projects have been performed throughout the United States from Fairbanks, Alaska to San Diego, California.

Professional experience includes the following:

Professional Experience

- * Dry Cleaner Inspections
- * Environmental Consultation
- * Waste Reduction Audits
- * Regulatory Compliance Audits
- * Drum Yard Clearances
- * Tank Farm Removals/Replacements
- * Lab Packaging & Supervision
- * Environmental Site Assessments
- * Superfund Site Remediation
- * Hazardous Waste site Project Design & Management
- * Habitat/Wetlands Restoration
- * AHERA asbestos inspections for school districts
- * Landfill Remediation
- * Agricultural assessments
- * Indoor air quality inspections

Professional Employment/Consultation

- * C.F.S. Continental Coffee, Inc., Food technologist, Chicago, Illinois
- * Holiday Industries, Research Engineer, Grand Prairie, Texas
- * Alton Packaging Corporation, Industrial Engineer, Dallas, Texas
- * U.S. Army Chemical Corps., Nuclear, Biological, Chemical Specialist - Special assignment - Umatilla Army Depot (DATS)
- * Oregon and permanent assignment U.S. Army Chemical Corps. Technical Escort Unit in Edgewood, Maryland
- * Rollins Environmental Services, Remedial Project Manager
- * Crown Environmental Services, Technical Director, Redmond, California
- * Dames & Moore, Remedial design Engineer, Portland, Oregon
- * Pegasus Environmental Management Services, Director of Technical Services
- * Pacific Tank & Construction, Manager of Estimation, Portland, Oregon
- * Enviro-Logic Inc., Director of Environmental Site Assessment Division
- * Environmental Inspection Services Founder / President

Professional Education

- * Environmental Research & Technology radon training
- * American Standard for Testing & Materials ASTM E1527-13 Training
- * Bachelor of Science, Chemistry, Northeastern Illinois University, 1978
- * U.S. Army Chemical School, Ft. McClellan, Alabama, 1983
- * U.S. Army Technical Escort Unit, Accident / Incident Response Training Center 1983
- * Registered Environmental Assessor REA - 01241 (Former classification)
- * Certified environmental Inspector CEI - 10364
- * AHERA Certified Asbestos Inspector IR-19-2439A
- * ODEQ Soil Matrix Assessor & UST Decommission Supervisor ID No. 10305
- * Washington DOE Registered Environmental Assessor
- * Wetland Specialist - Training Wetlands Institute 1997
- * EPA / HUD Lead-Based Paint (LBP) Certified Inspector & Risk Assessor

Additional Education

- * Joint Military Material Packaging & Transportation
- * Asbestos Abatement Seminar attendance 1987
- * Thin Layer Chromatography, 1989
- * Oregon Registered Underground storage Tank Supervisor, 1998
- * Oregon Registered Soil Matrix Assessor, 1998
- * Washington Registered Assessor, 1991
- * Washington Registered Underground Storage Tank Supervisor, 1991
- * Wetland Training Institute Delineation Course Study University of Portland 1997
- * 40-Hour HAZMAT Certified
- * AHERA-Certified Inspector

Special Skills

- * School District radon surveys and radon control planning
- * Facility Environmental Compliance Audits
- * ASTM standard Environmental Site Assessments
- * Computer Programming
- * Organic surfactant chemical synthesis and analysis
- * Hazardous Waste Site remediation/ estimating/ standards development
- * Design of filtration systems, batch and continuous process optimization studies
- * QA/QC Procedures
- * SUPERFUND Site Management
- * Industrial/ Research Engineering
- * Hazardous Waste Site Remediation/ Consultation
- * Wetlands Delineation and Habitat Restoration

Certification

- * U.S. Army MOS 54E20 - U.S. Army Chemical Corps.
- * International Fire Code Institute (IFCI) Certified UST Supervisor
- * International Fire Code Institute (IFCI) Certified Soil Matrix Assessor
- * Certified Hazardous Waste Manager
- * 40-hour OSHA Training
- * 40-hour OSHA Supervisor Training
- * Registered Environmental Assessor (DOE)
- * DEQ Registered UST Supervisor
- * DEQ Registered Soil Matrix Assessor
- * Resolution Trust Corporation (RTC) approved Environmental Assessor
- * California Registered Environmental Assessor (REA-01241)- program discontinued
- * Department of Ecology (DOE) Registered Environmental Assessor
- * Environmental Assessment Association, Certified Environmental Inspector & Transaction Specialist (CEI-10364)
- * Environmental Assessment Association, Certified Environmental Consultant (CEC)
- * AHERA Certified Asbestos Inspector
- * Wetland Delineator Graduate Wetland Training Institute, University of Portland 1997
- * EPA / HUD LBP Inspector & Risk Assessor
- * ASTM Training class, May, 2004