



# Bunavola '52







L

Leodocia Pope





*The*

# BUNAVOLA

*Bunkie High School*

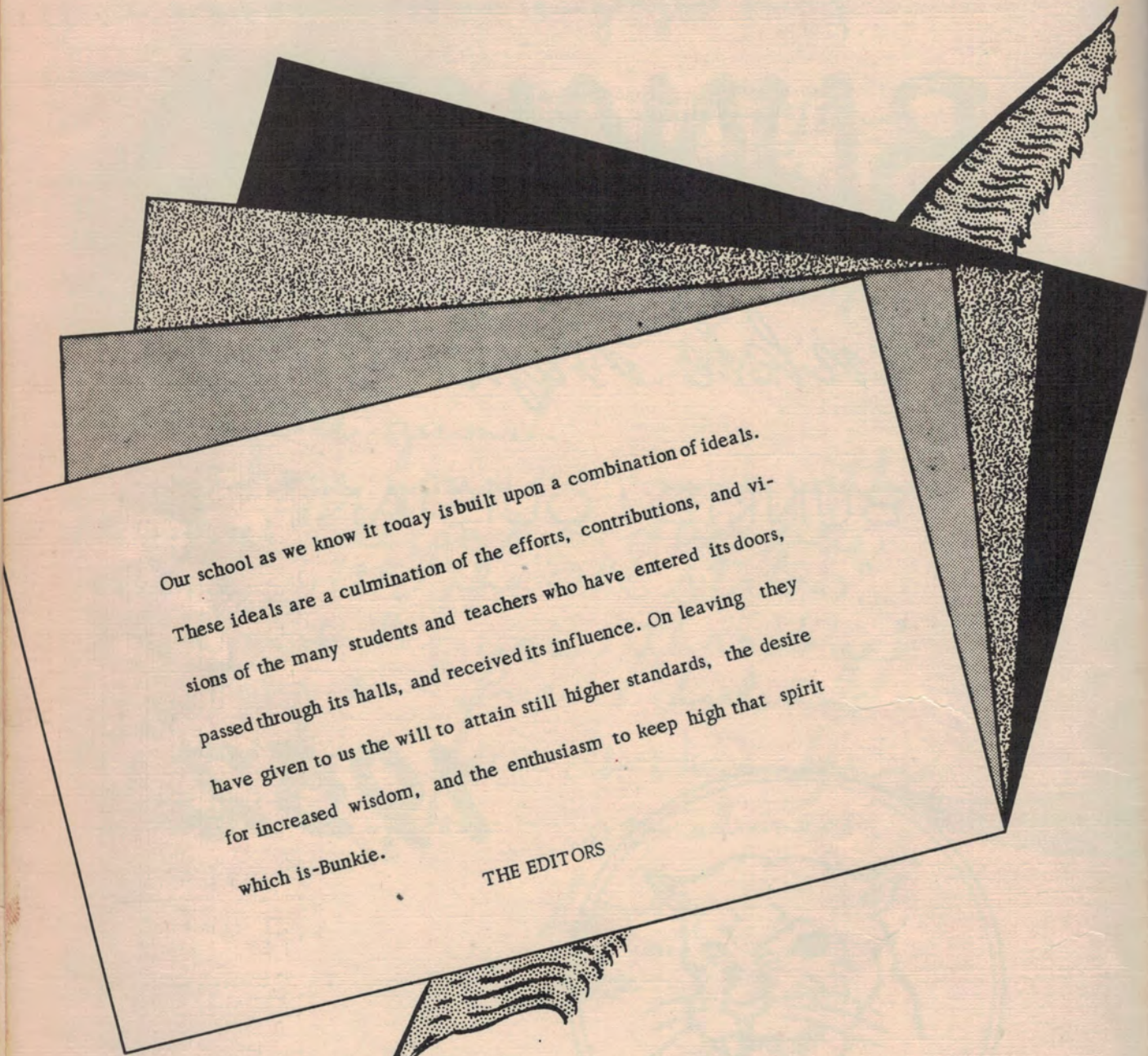
BUNKIE, LOUISIANA

**1952**





# Foreword



Our school as we know it today is built upon a combination of ideals. These ideals are a culmination of the efforts, contributions, and visions of the many students and teachers who have entered its doors, passed through its halls, and received its influence. On leaving they have given to us the will to attain still higher standards, the desire for increased wisdom, and the enthusiasm to keep high that spirit which is-Bunkie.

THE EDITORS





# Contents

TITLE PAGE

FOREWORD

DEDICATION

PRINCIPAL'S MESSAGE

STAFF

FACULTY

CLASSES

ORGANIZATIONS

FEATURES

ATHLETICS

ACTIVITIES

SNAPSHOTS

ADVERTISEMENTS



# Dedication

To Mr. Snoddy, the outgoing Principal

We, the students of Bunkie High School, wish to dedicate this, our yearbook, to you for your untiring efforts, considerations, and advice given us through the years. We wish you much success in years to come as principal of the Bunkie Elementary School.



NSELLE & B  
1957  
JANUARY  
1 2 3 4  
5 6 7 8 9 10 11  
12 13 14 15 16 17 18  
19 20 21 22 23 24 25  
26 27 28 29 30 31

210



# Dedication

To Mr. Massey, the incoming Principal

We also wish to dedicate our yearbook to you. Though this is your first year among the students of Bunkie High, we have grown to admire and appreciate your service, leadership, and willingness to help. For these and many other reasons we will stand behind you in future years and with you in all of your undertakings toward making our school, yours.

W. J. MASSEY & BRO.  
STATIONERY AND SUPPLIES  
NEW ORLEANS, LA.

JANUARY 1952						
2	3	4	5	6	7	8
9	10	11	12	13	14	15
16	17	18	19	20	21	22
23	24	25	26	27	28	29
30	31					



*W. J. Massey*



A  
n  
n  
u  
a  
l



PATSY BRISTER  
Co-Editor



KEITH GUILLORY  
Co-Editor

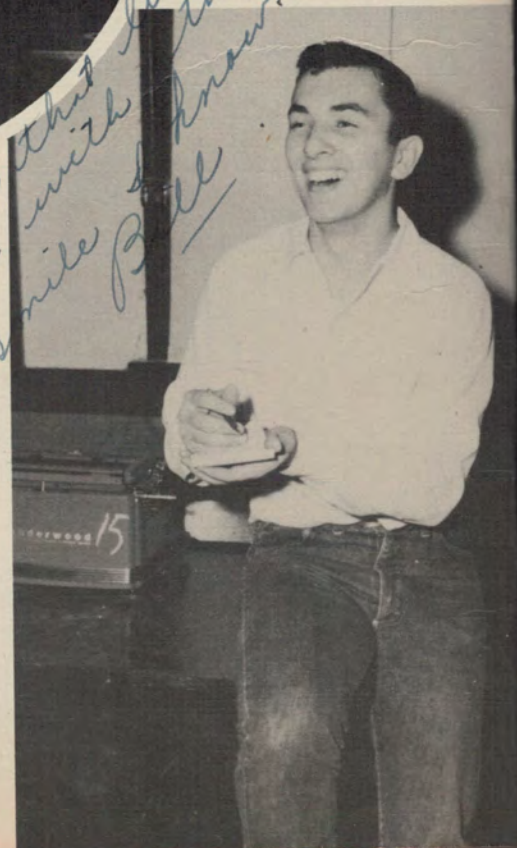


ELAINE BARRON  
Business Manager

KATHLEEN HYDE  
Assistant Editor

BILL HUNT  
Assistant Business Manager

*To get that little ol' smile  
give with a little sweetness  
a mile & know.*



S  
t  
a  
f  
f





MRS. JOHN FINLAY  
MR. STANLY CATHA  
Annual Sponsors



Marlene Calcote, Jackie Rachal,  
Charles Bordelon, Barbara Kelley,  
and Jerry Crouch

GULLORY  
-Editor

*Gullory*

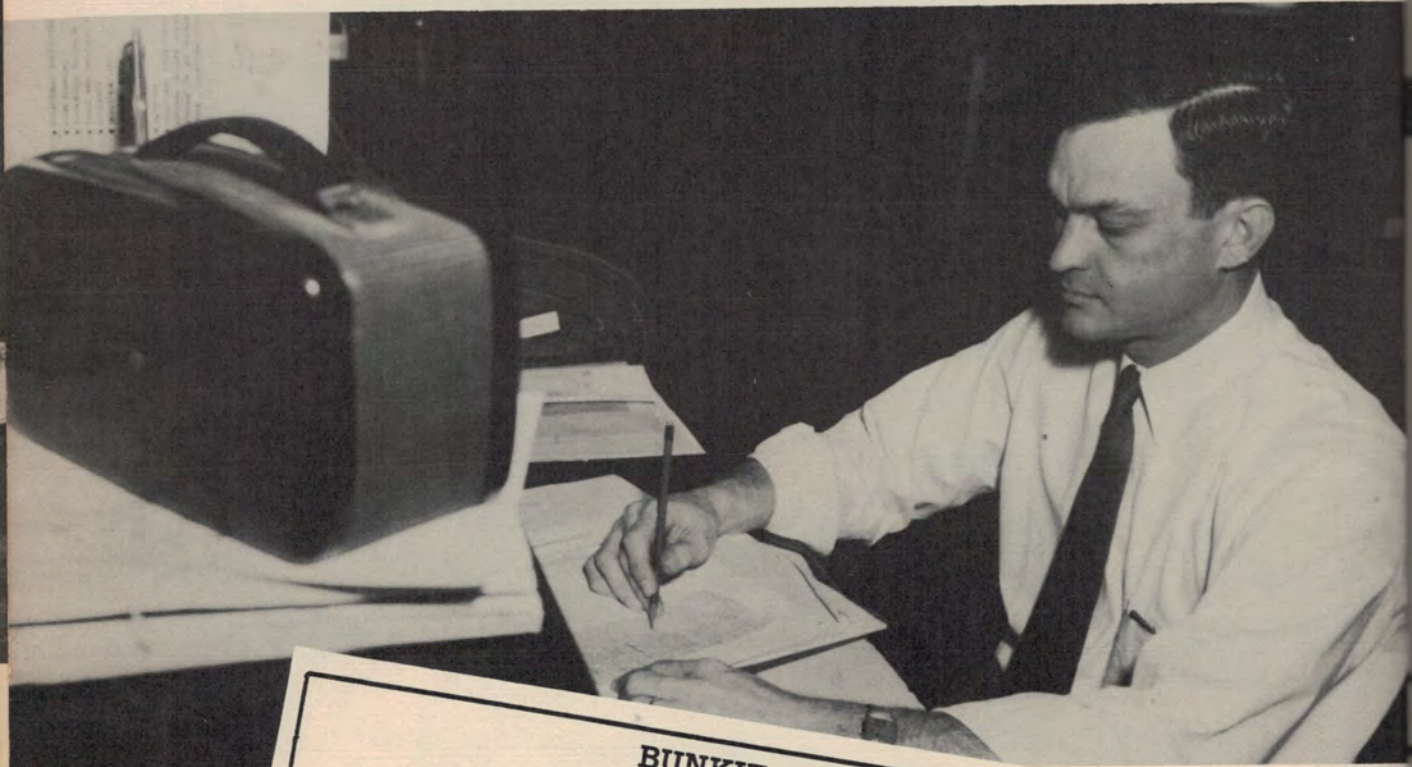
L. HUNT  
Business Manager



# Staff At Work



# PRINCIPAL'S MESSAGE



## BUNKIE HIGH SCHOOL

W. J. MASSEY, Principal

BUNKIE, LA

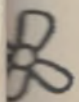
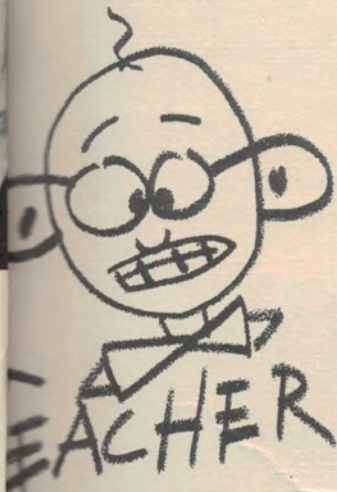
Dear Student:

It has been said that the mark of an educated individual is his ability to determine how far to go with anything. In our cooperative planning and execution of the process of education, we have tried to balance the purely academic phase of the learning experiences of our students with the co-curricular aspects which include athletics, music and dramatics, student publications, clubs, and the Student Council, and educational field trips. We realize that each student is an individual developing physically, mentally, emotionally, socially and morally at his own rate. This belief causes me to think that our students, by living democratically in our school and engaging in varied experiences in which they must consider the rights of others, will leave Bunkie High School prepared to live wisely and well in this the greatest civilization that the world has yet produced. And they will always be proud to say, "I am an American."

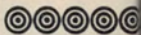
*W. J. Massey*



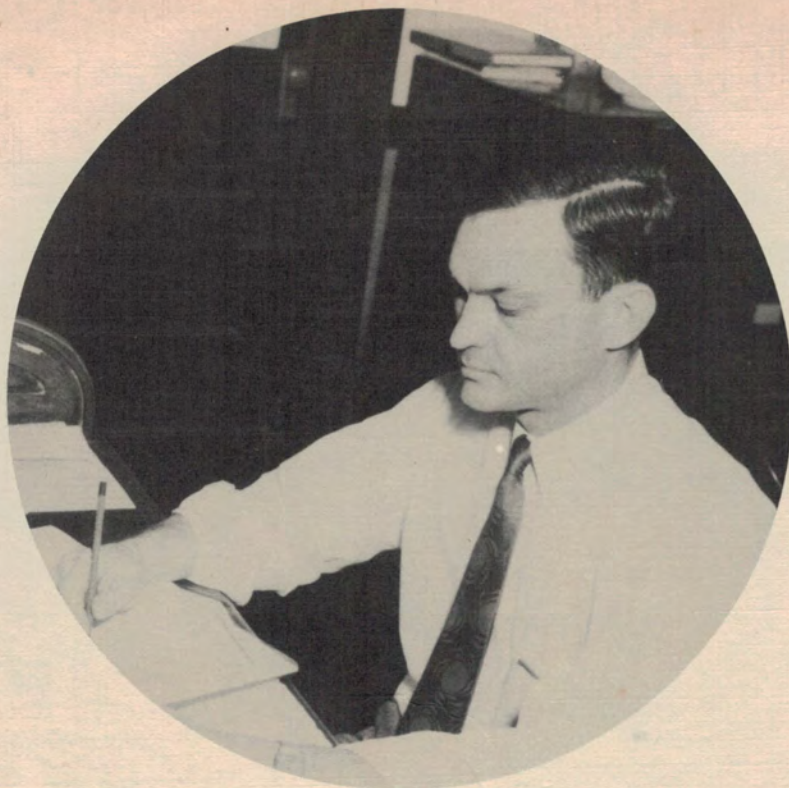
# Faculty



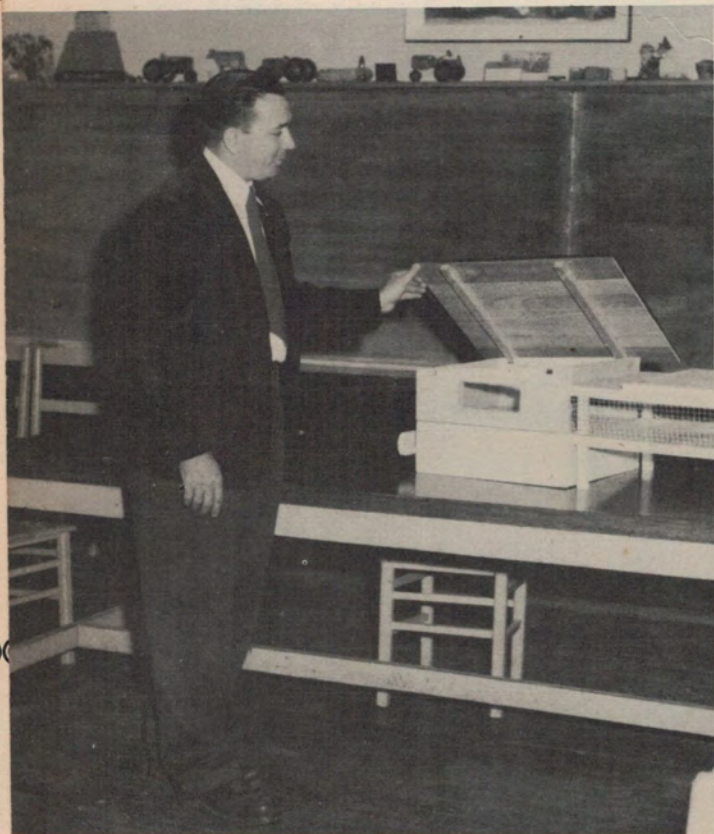
ted  
to  
nd  
ve  
he  
o-  
c  
,  
e







W. J. MASSEY  
Principal



MR. B. G. ST. ROMAIN  
Agriculture



MRS. LOLA ST. ROMAIN  
Home Economics





Coaches RALPH EDWARDS and STANLY CATHA  
Social Studies, Physical Education



MR. KIRBY TYRONE

English  
*Kirby Tyrone*

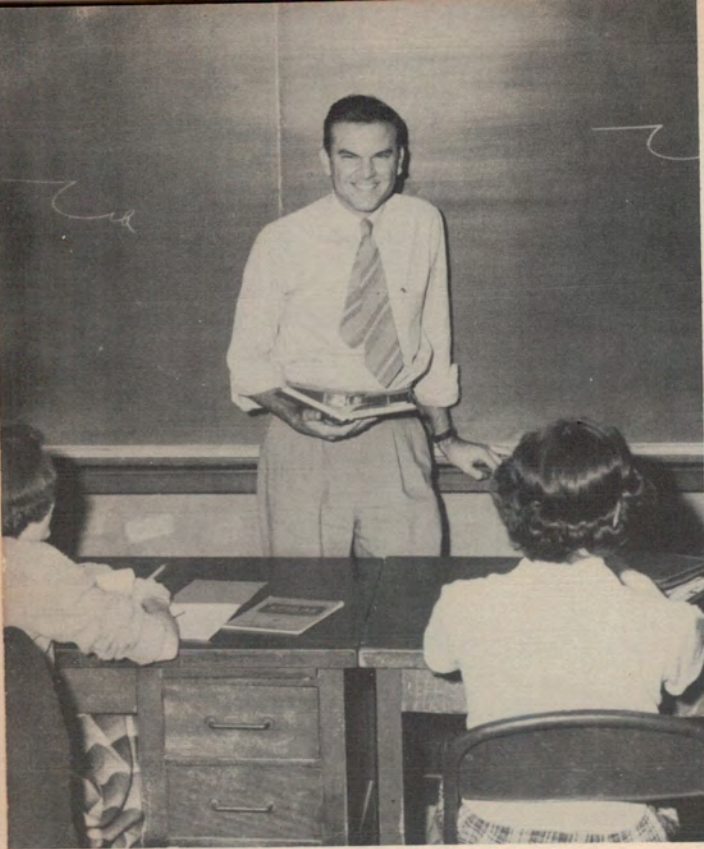


MISS BEVERLY STAFFORD  
Biology, Physical Education



MRS. MARGARET FINLAY  
English





MR. MELVIN SHARPE  
Commerce



MR. MARVIN TANNER  
Librarian



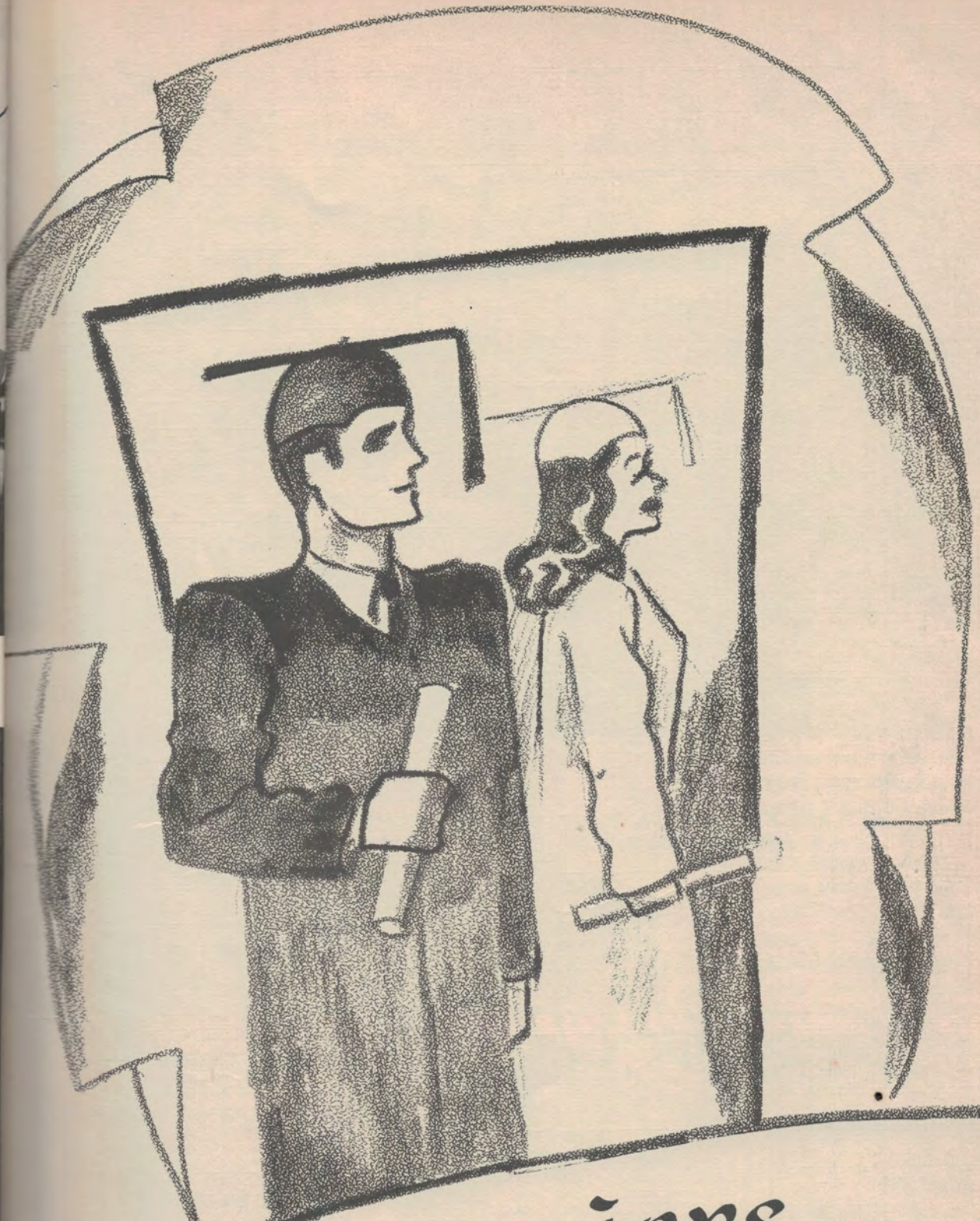
MR. ERNEST HATLEY  
Music



MRS. MARY HATLEY  
Mathematics



Marion  
Janner



Seniors

NER

EY





Left to right: PATSY BRISTER, reporter; M. C. LUTZ, vice president; MARY LEE ARMAND, secretary; ELAINE BARRON, treasurer; JACKIE LEMOINE RACHEL, president.

## *Senior Class Officers*

CHARLES B  
 Class Club  
 U. S. Tiler  
 Assistant B  
 U. S. S. G  
 U. S. J. S. T  
 MARY LEE  
 Treasurer  
 Secretary  
 Political Sta  
 Team 2: D  
 Senior Cla  
 U. S. S. G  
 Lake  
 MATTIA NEL  
 Band 1, 2, 3,  
 Home Econ  
 Plays 1, 4.  
 MATTY AND  
 Basketball 1  
 Band 1, 2, 3,  
 Team 1, 2, 3, 4  
 Freshette  
 Home Econ  
 Banquet Se  
 Parish Fair  
 Court 1: FF  
 Central Lou  
 wards, In  
 wards 2: C  
 Reporter 4:  
 1, 2, 3, 4.



CHARLES RUSSELL ALLOR "T Russ"

Class Clubs 1, 2, 3, 4; Bunavola Staff 3, 4; Usher for Graduation 3; Central Louisiana Rally 1, 2, 3, 4; State Rally 1, 2, 3, 4; Glee Club 1, 2; Debate Club 3; Debate Team 3; Honor Roll 1, 2, 3, 4.



*Russell Allor*

MARY LEE ARMAND "Baby Doll"

Trumpet Staff 4; Assistant Editor; Boosters 4; Class Clubs 1, 2, 3, 4; Home-Economics 1, 2, 3, 4; Student Council 4; Secretary; Usher for Graduation 3; Pelican State 3; Glee Club 1, 2; Debate Team 3; Debate Club 3; Secretary, Senior Class 4; Plays 1; Honor Roll 1, 2, 3, 4.

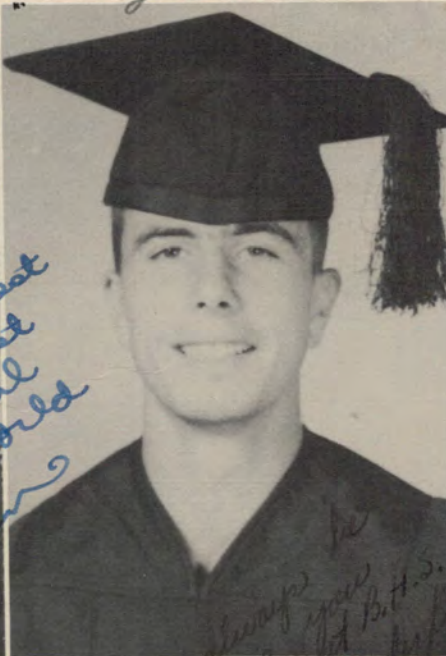
*Dear "Dodo": Lotsa make Pam behave herself while I'm gone.*



*Part of her name maybe*



*Jo the sweetest and the spirit and the girl in the field E. Lane*



JO ELAINE BARRON "Peppy"

Basketball, 1, 3, 4; Volleyball 1, 2, 3; Softball 1, 2; "B" Club 3, 4; Trumpet Staff 1, 2; Editor 4; Boosters 1, 2, 3; President 4; Pantherettes 3; Class Clubs 1, 2, 3, 4; Home Economics 1, 2, 3; Secretary 3; President 4; Majorette 3, 4; Bunavola Staff 3, Business Manager 4; Usher for graduation 3; Central Louisiana Rally 1, 2, 3, 4; State Rally 1, 2, 3, 4; 1st Home Economics 2; Pelican State 3; Glee Club 1; Class Officer 4; Plays 1, 2, 3, 4; FHA Parish Fair Award 2; Honor Roll 1, 2, 3, 4;

CHARLES BORDELON "Chas"

Football 3, 4; Volleyball 2, 3, 4; Softball 3, 4; "B" Club 3, 4; Trumpet Staff 1, 2, 3; Band 1, 2; Class Clubs 1, 2, 3, 4; FFA 4; Officer 4; Bunavola Staff 3, 4; Glee Club 1, Debate Club 3; Plays 4; Homecoming Game, Captain 3, 4;

MYRA NELWYN BORDELON "Mice"

Band 1, 2, 3, 4; Class Clubs 1, 2, 3; Home Economics 1, 2, 3; Glee Club 1; Plays 3, 4.

PATSY ANN BRISTER "Bris"

Basketball 1, 2, 3, 4; Captain 4; Volleyball 1, 2, 3, 4; "B" Club 1, 2, 3, 4; Boosters 1, 2, 3, 4; Trumpet Staff 1, 2, 4; Pantherettes 3; Class Clubs 1, 2, 3, 4; Home Economics 1; Majorette 1, 2, 3, 4; Bunavola Staff 3, 4; Co-Editor 4; Parish Fair Queen 4; May Festival Court 1; FFA Queen 1, Maid 2, 3; Central Louisiana Rally 2; Tournament Awards, Invitational and All Parish Awards 2; Class Officer, President 1, 2; Reporter 4; Plays 1, 2, 3, 4; Honor Roll 1, 2, 3, 4.



*May you always be as happy as you seemed to be at B.H.S. Keep your wonderful personality with you!*





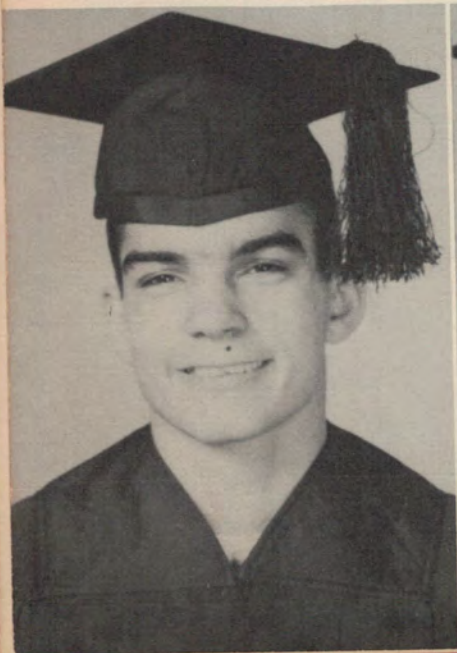


MARLINE T. CALCOTE "Pod"  
 Volleyball 2; Trumpet Staff 4; Boosters  
 1, 2, 3, 4; Class Clubs 1, 2, 3, 4; Bunavola  
 Staff 3, 4; Usher for Graduation 3; Cen-  
 tral Louisiana Rally 3; Bookkeeping  
 State Rally 3; Glee Club 2; Debate C  
 3; Debate Team 3; Plays 1; Honor Ro  
 1, 2, 3, 4.

BILLIE JEAN CLARKE "Bill"  
 Boosters 1; Class Clubs 1, 2, 3; Home  
 Economics 1, 3, 4; Glee Club 1; De-  
 bate Club 2.

LUCILLE CARTER COUVILLION "Tillie"  
 Basketball 1, 2, 3, 4; Co-Captain 4;  
 Volleyball 2, 3, 4; Softball 1, 2; "B"  
 Club 2, 3, 4; Boosters 1, 2, 3, 4; Class  
 Clubs 1, 2, 3, 4; Home Economics 1, 2,  
 3, 4; Bunavola Staff 3, 4; Glee Club 1;  
 Plays 3, 4.

ROBERT M. DESELLE "Moe"  
 Football 4; "B" Club 4; Class Clubs  
 1, 2, 3, 4; FFA 2, 3, 4; Plays 3; Parish  
 Fair FFA Awards 2; Honor Roll 3.



*Best of luck always  
 to a great  
 "Joe"*

*So Roadblock a good  
 friend and swell job  
 "Moe"*

RALPH DEVILLIER "Boo"  
 Basketball 2, 3, 4; Football 3, 4; Volle  
 ball 2, 3, 4; Softball 2, 3, 4; Track 2,  
 4; "B" Club 1, 2, 3, 4; Class Clubs 1, 2,  
 3, 4; FFA 1; Parish Fair King 4; Vice  
 President 2; Plays 4.

JOSEPH GILBERT DOPSON "Joe"  
 Football 3; "B" Club 4; Band 1, 2, 3, 4  
 Class Clubs 1, 2, 3, 4; FFA 1, 2; Centra  
 Louisiana Rally 2, 3; State Rally 2, 3;  
 Debate Team 3; Plays 4; Parish Fair  
 FFA Awards 1; Parliamentary Law Te  
 1, 2; Public Speaking 1.



ALCOTE "Pod" VERLY ANN DUPLECHIN "Bev"  
 Trumpet Staff 4; Boosters 1, 2, 3, 4; Class Clubs 1, 2, 3, 4; Bunavola Staff 4; Parish Fair Queen  
 for Graduation 3; Bookkeeping 8th grade; Glee Club 1, 2; Debate  
 Club 2; Debate Club 3; Plays 1, 2; Honor Roll 3, 4.  
 3; Plays 1; Honor Roll

ATRICIA DAWN FEAZEL "Pat"  
 Boosters 1, 2, 3, 4; Class Clubs 1, 2, 3, 4;  
 Home Economics 1, 2, 3; Cheerleader  
 Clubs 1, 2, 3; Home Economics 1, 2, 3; FFA Queen 2;  
 4; Glee Club 1; De-FA Maid 1; Honor Roll 3, 4.

ARKE "Bill"  
 Clubs 1, 2, 3; Home Economics 1, 2, 3; FFA Queen 2;  
 4; Glee Club 1; De-FA Maid 1; Honor Roll 3, 4.



*girl  
 the  
 sweetest personality  
 & kid don't you  
 any want because  
 the boys will prefer,  
 love you right  
 H. A. F.*

*block a good  
 and sweet girl  
 "Moe"*

HILDA ANN FIRMIN "Haf"  
 Transferred from Cottonport 2; Soft-  
 ball 2, 3, 4; B Club 2, 3; Boosters 2, 3,  
 4; Class Clubs 2, 3, 4; Home Economics  
 2, 3, 4; Plays 3; Honor Roll 3

CHARLES WILLIAM FORD "Charley"  
 Graduated in three years; Track 2;  
 Band 1, 2, 3; Class Clubs 1, 2, 3;  
 Bunavola Staff 3; Usher for Graduation  
 3; Debate Club 3; Honor Roll 1, 2, 3.

"Boo"  
 Football 3, 4; Volleyball 3, 4; Trumpet Staff 4;  
 Boosters 3, 4; Class Clubs 1, 2, 3, 4;  
 French Club 3; Plays 3, 4; Honor Roll  
 1, 2, 3, 4.

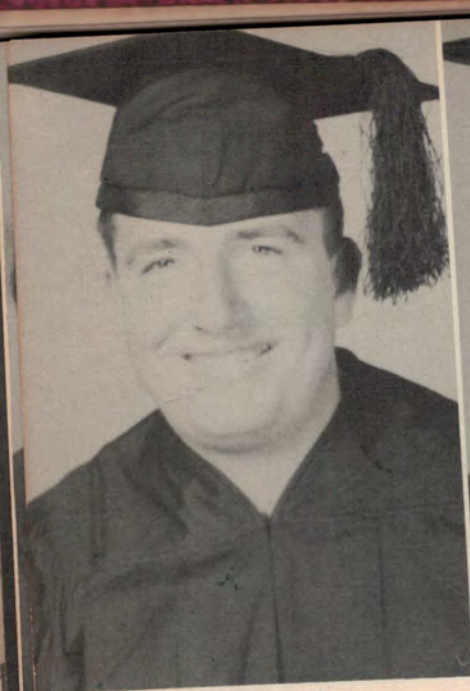
SILVIA JEAN FRANKS "Jean"  
 Volleyball 3, 4; Trumpet Staff 4;  
 Boosters 3, 4; Class Clubs 1, 2, 3, 4;  
 French Club 3; Plays 3, 4; Honor Roll  
 1, 2, 3, 4.

OPSON "Joe"  
 Band 1, 2, 3, 4;  
 FFA 1, 2; Central  
 State Rally 2, 3;  
 Plays 4; Parish Fair  
 Elementary Law Team  
 1.

JAMES GATES "Lil Spike"  
 Class Clubs 1, 2, 3, 4; FFA 2, 3, 4; Plays  
 2.



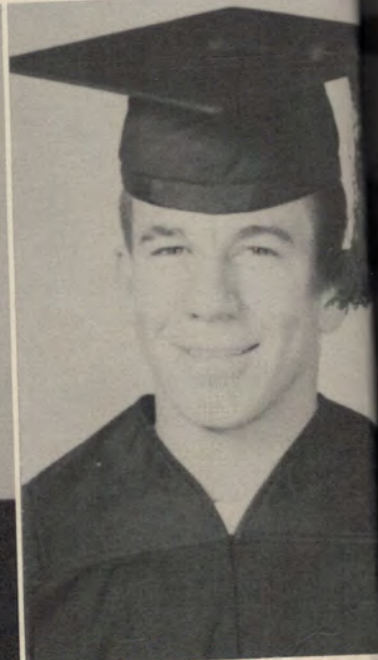
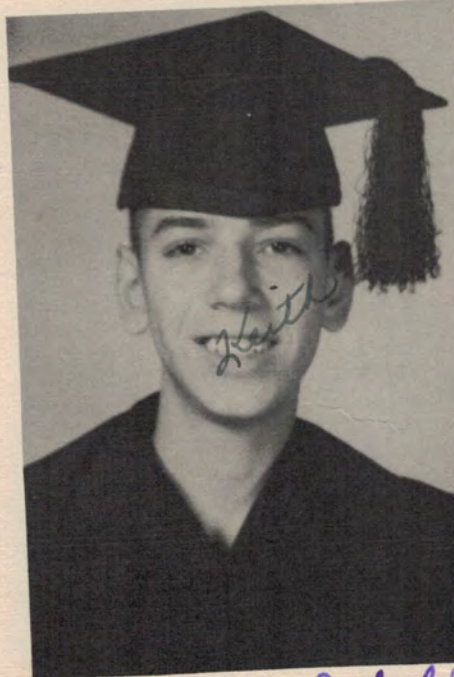




**JOHN GATES "Spike"**  
 Class Clubs 1, 2, 3, 4; FFA 1, 2, 3;  
 Plays 3.

**HERBERT GOUDEAU "Tooney"**  
 Class Clubs 1, 2, 3, 4; FFA 1, 2, 3, 4;  
 Plays 3; Parish Fair FFA Awards 2, 3;  
 Honor Roll 3.

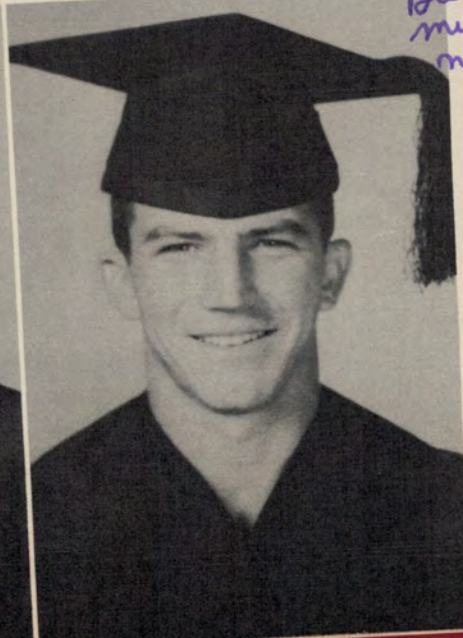
**JAMES KEITH GUILLORY "Buddy"**  
 Band 1, 2, 3, 4; Class Clubs 1, 2, 3, 4;  
 Student Council 4, Representative;  
 Bunavola Staff 3, 4, Co-Editor; Usher  
 for Graduation 3; Central Louisiana  
 Rally 1, 3; French Club 4; Debate  
 Club 3; Debate Team 3; Plays 1, 4;  
 Honor Roll 1, 2, 3, 4.



**STEVEN GUILLORY "Steve"**  
 Transferred from New Orleans 2; Foot-  
 ball 3, 4; Volleyball 2, 3, 4; "B" Club  
 3, 4, Secretary; Class Clubs 2, 3, 4;  
 FFA 2; Bunavola Staff 4; Class Officer  
 3, President; Plays 3, 4.

*To a girl with  
 a great personality  
 Good Luck,  
 Bobbie*

*Best of luck to  
 my next door  
 neighbor.  
 Don Hines*



**BOBBIE JEAN HARPER "Bobbie"**  
 Boosters 1, 2, 3, 4; Class Clubs 1, 2, 3, 4;  
 Home Economics 1, 2, 3; Cheerleader  
 4; Homecoming Maid 4; Spring Festi-  
 val 1; Honor Roll 3, 4.

**DONALD E. HINES "Don"**  
 Transferred from Metairie (New Orleans)

Transferred from Metairie (New Orleans)  
 3; Football 4; Softball 3, 4; "B" Club  
 4; Trumpet Staff 4; Class Clubs 3, 4;  
 FFA 3, 4; Student Council 4, Vice  
 President; Bunavola Staff 4; Plays 4.



MES OTIS HOWARD "Tape"  
 Basketball 2, 3, 4; Football 3, 4; Volley-  
 ball 2, 3, 4; Softball 1, 2, 3; "B" Club 4;  
 and 1, 2; Class Clubs 1, 2, 3, 4; FFA 1, 2,  
 4, officer; Usher for Graduation 3;  
 Central Louisiana Rally 1, 2, 3, 4; State  
 Rally 1, 2, 3; Class Officer 1, 2, 3; Plays  
 2, 3; Public Speaker 1, 2, 3, 4; Parlia-  
 mentary Law Team 1, 2, 3, 4.



ABIA MARIE JUNEAU "Sabe"  
 Trumpet Staff 4; Band 1, 2, 3, 4; Class  
 Clubs 1, 2, 3, 4; Home Economics 1, 2, 4;  
 Bee Club 1, 2; Central Louisiana Rally  
 Debate Team 3; Debate Club 3; Plays  
 Honor Roll 3, 4.



*To a very  
 sweet person  
 I know.  
 Salvia*

ke"  
 4: FFA 1, 2, 3;  
 U "Tooney"  
 4: FFA 1, 2, 3, 4;  
 FFA Awards 2, 3;



*To Mabel  
 From Mabel  
 Barb*

MARTHA ANN KAVANAUGH "Kavy"  
 Basketball 1; Volleyball 3, 4; Trumpet  
 Staff 1; Boosters 1, 3, 4; Class Clubs 1, 2,  
 3, 4; Home Economics 1, 2, 3, 4; Bunavola  
 Staff 4; Homecoming Queen 4; Class  
 reporter 1; Plays 3, 4; Honor Roll 1, 2, 3, 4.

BARBARA JOY KELLY "Kelly Mae"  
 Basketball 1, 2, 3; Softball 1; "B" Club  
 1, 2, 3; Class Clubs 1, 2, 3, 4; Home Eco-  
 nomics 1, 2, 3; Cheerleader 4; Bunavola  
 Staff 4; Honor Roll 3, 4.

*May God bless you  
 lit neighbor, and  
 keep you as sweet  
 as you are.  
 love*

es)  
 "Bobbie"  
 ss Clubs 1, 2, 3, 4;  
 3; Cheerleader  
 4; Spring Festi-  
 on"  
 errie (New Orles  
 errie (New Orleans)  
 3, 4; "B" Club  
 ss Clubs 3, 4;  
 acil 4, Vice  
 aff 4; Plays 4.

MATHEW CHARLES LUTZ "M.C."  
 Basketball 2, 3, 4; Volleyball 3, 4; Soft-  
 ball 1, 2, 3, 4; Track 3, 4; "B" Club 4;  
 Class Clubs 1, 2, 3, 4; Cheerleader 3;  
 Class Officer 4, Vice President.



DENNIS E. MATIRNE "Den"  
 Band 1, 2, 3, 4; Class Clubs 1, 2, 3, 4;  
 FFA 1, 2, 3.







JOHN RAY MELLA "John"  
Softball 1, 2, 3; "B" Club 1, 2, 3; Band  
4; Class Clubs 1, 2, 3, 4; FFA 1, 2.



JOSIE MAE MELLA "Jo"  
Softball 2; Boosters 1, 2, 3, 4; Class  
Clubs 1, 2, 3, 4; Home Economics 1, 3;  
Glee Club 2; Parish Fair Court 4; Home  
coming Maid 3; Debate Club 3; Plays  
2, 4; Honor Roll 3, 4.

*The best of everything to the  
friendest girl I know. It  
that way.  
Always Josie*

EMMA JEAN McDONALD "Jean"  
Boosters 4; Class Clubs 1, 2, 3, 4; Home  
Economics 4; Glee Club 1, 2; Debate  
Club 3; Debate Team 3; Honor Roll 1.

BURTON S. NEWTON "Burt"  
Class Clubs 1, 2, 3, 4; FFA 1, 2; Class  
Officer 3, Vice President; Parish Fair  
Award 1, 2, FFA; Plays 4.



*You will always  
stand out in my  
memories as a sweet  
friend  
Emma Jean*



LLOYD A. NEWTON "Screw"  
Football 3, 4; Track 1, 2, 3, 4; "B" Club  
1, 2, 3, 4; Class Clubs 1, 2, 3, 4; FFA 1,  
2, 3, 4; Student Council 4, Parliamentar-  
ian; Plays 3, 4.

JACQUELINE LEMOINE RACHAL "Jackie"  
Transferred from Denison, Texas 2;  
Basketball 2; Trumpet Staff 2, 3, 4;  
Boosters 2, 3, 4; Class Clubs 2, 3, 4; Home  
Economics 2; Cheerleader 3, 4, Head  
Cheerleader; Bunavola 3, 4; Parish Fair  
Queen 2; FFA Maid 3; Booster Queen 3;  
Usher for Graduation 3; Central Louisi-  
ana Rally 2, 3, 1st typing, State Rally  
3, 4th typing; Pelican State 3; Class  
Officer 2, 3, Secretary, 4 President;  
Plays 2, 3, 4; Honor Roll 2, 3, 4.





ELLA "John"  
 3; "B" Club 1, 2, 3; Band  
 1, 2, 3, 4; FFA 1, 2.

ELLA "Jo"  
 1, 2, 3, 4; Class  
 1; Home Economics 1, 3;  
 Parish Fair Court 4; Home  
 Debate Club 3; Plays  
 1, 2, 3, 4.

*Everything to the  
 girl I know. She  
 always joshes*

JAMES ROBERTS "Slim"  
 Track 1, 2, 3; "B" Club 4; Class Clubs  
 1, 2, 3, 4; Glee Club 1, 2, 3; Debate  
 Club 3; Honor Roll 4.

JERRY RANDOLPH RYAN "Jerry"  
 Basketball 1, 2, 3, 4; Football 3, 4;  
 Volleyball 2, 3, 4; Softball 1, 2, 3, 4;  
 Track 3, 4; "B" Club 1, 2, 3, 4; Trumpet  
 Staff 4; Class Clubs 1, 2, 3, 4; FFA 1, 2;  
 Student Council, President 4; Usher for  
 Graduation 3; Pelican State 4; French  
 Club 3; Tournament Award, Track 3;  
 Debate Club 3; Debate Team 3; Class  
 Officer 1, 2; Parish Fair Award, FFA 1, 2;  
 Honor Roll 1, 2, 3, 4; Football Captain 4;  
 Most Valuable Player 4.



ELA SIMPSON KITE "Simp"  
 Booster 2; Class Clubs 1, 2, 3, 4; Home  
 Economics 1, 3, 4; Parish Fair Queen  
 Central Louisiana Rally 3, 4; Glee Club  
 1, 2; Debate Club 3; Plays 4; Honor  
 Roll 4.

MARIE TAGLIARINO "Marie"  
 Class Clubs 1, 2, 3, 4; Home Economics  
 1, 3, 4; Debate Club 3.

TON "Screw"  
 1, 2, 3, 4; "B" Club  
 1, 2, 3, 4; FFA 1,  
 Council 4, Parliamentar-

INE RACHAL "Jackie"  
 1, 2, 3, 4; Home  
 Economics 1, 3, 4; Parish Fair  
 Queen 3, 4; Central Louisi-  
 ana Rally 3; Class  
 Officer 4 President;  
 1, 2, 3, 4.

DORIS RAY TOWNSEND  
 Class Clubs 1, 2, 3, 4; Home Economics 1;  
 Debate Club 3; Plays 4.

MARION BELMONT TOWNSEND  
 "Lil Abner"  
 Football 3, 4; Track 1, 2, 3, 4; "B" Club  
 1, 2, 3, 4; FFA 1, 2; Football Co-Captain  
 4; Debate Club 3; Class Clubs 1, 2, 3, 4.

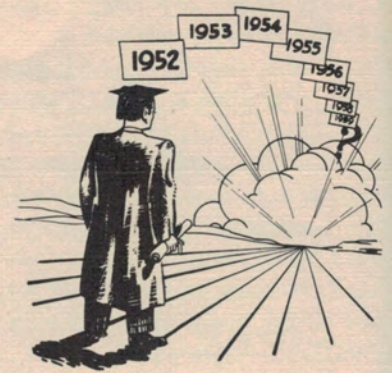
*Best subject  
 always to  
 a girl who is  
 really tops,  
 always,  
 she's*







GENEVIEVE WHITE "Genny"  
Boosters 3; Freshman Club 1; Home  
Economics 1, 2, 4; Glee Club 3; Debate  
Club 3; Commerce Club 4; Plays 4.



## *Honor Roll*

The following seniors had a four-year average of 90 or above:

RUSSELL ALLOR

MARY LEE ARMAND

ELAINE BARRON

PATSY BRISTER

MARLINE CALCOTE

CHARLES FORD

SYLVIA FRANKS

KEITH GUILLORY

MARTHA KAVANAUGH

JERRY RYAN

JACKIE L. RACHAL





Juniors





## *Junior Class Officers*

President - - - - -	ANDREW VIDRINE
Vice President - - - - -	MARILYN SCOTT
Secretary - - - - -	MUREL ELISE BILES
Treasurer - - - - -	HAROLD BROWN
Reporter - - - - -	KATHLEEN HYDE



NEDRA ABNEY

BARBARA ARMAND

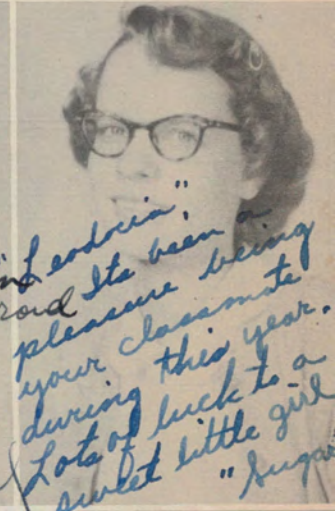
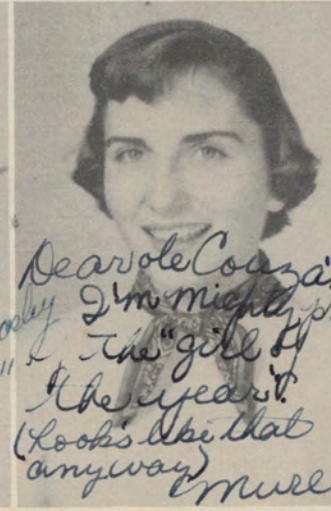
EDGAR BARONNE



BARBARA BEASLEY

MUREL ELISE BILES

EUNICE BOURG



HAROLD BROWN

MARGARET BRYAN

JERRY CROUCH

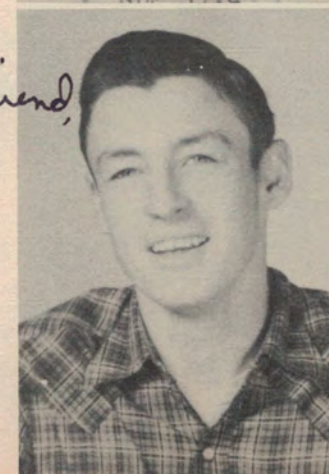


To my girlfriend,  
Boutzie

MURRAY DAVIS

SHIRLEY DUBROC

BARBARA DUCOTE



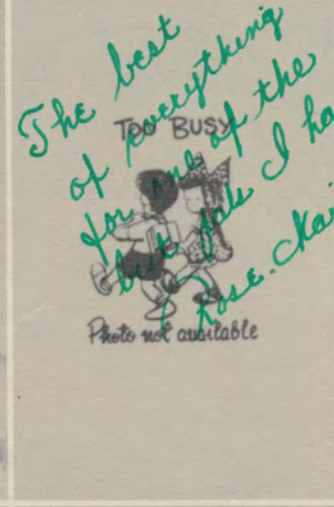
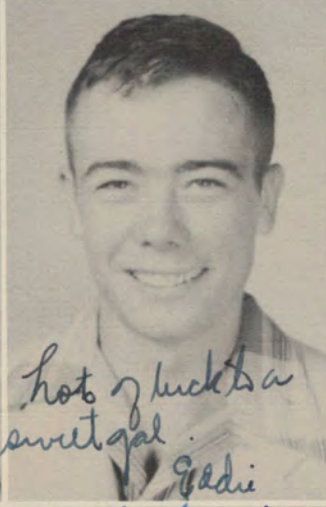




SHIRLEY DUCOTE  
HAROLD DUPREE  
AMY RUTH ELLIOTT

Best of luck to  
the sweetest girl in  
the future  
Friday

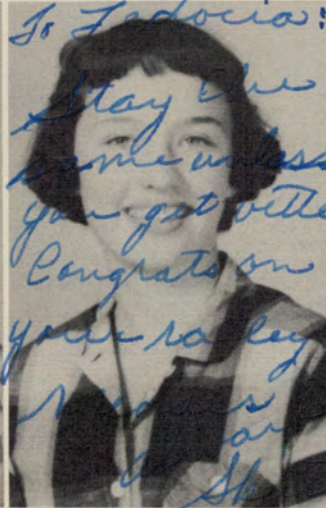
Do not  
forget  
to get  
all  
the  
days  
of  
the  
week  
with  
me  
and  
my  
family



BARBARA FRANK  
EDDIE GRIMSHAW  
ROSE MARIE GUILLOT

The best  
of everything  
too busy  
to take  
a photo  
Photo not available  
Rose Marie

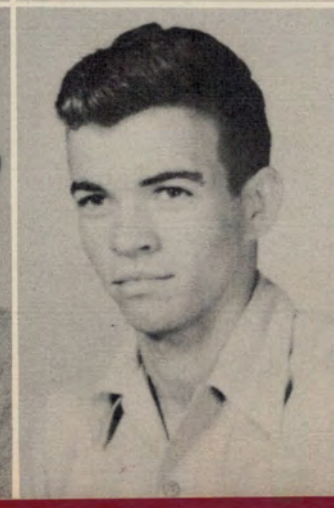
lots of luck to a  
sweet gal  
Eddie



BILL HUNT  
KATHLEEN HYDE  
BETTY JEANSONNE

To Fidocia:  
Stay the  
same unless  
you get better  
Congrats on  
your baby  
Mama  
Daddy

To a very  
nice  
girl. If  
you  
will always  
be in my  
memory  
of your  
mom  
Love  
Betty



Best of Luck to  
a nice girl  
Kelley

M. J. JEANSONNE  
DIANE JONES  
KELLY LAFLEUR

To a very  
sweet  
girl.  
Diane



HIRLEY DUCOTE  
HAROLD DUPREE  
MY RUTH ELLIOTT

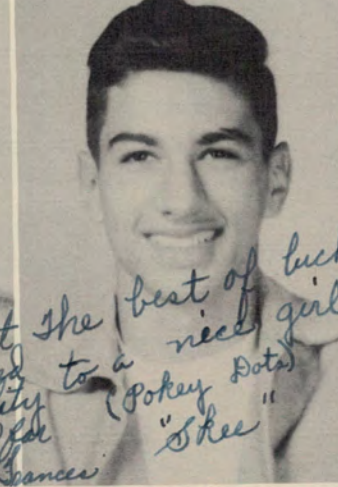
*the best of luck to the  
best girl. I know you  
will really be a great  
person.  
Alice*

ALICE LADNIE  
STELLA LANDRY  
JAROD LEMOINE



BARBARA FRANK  
DIE GRIMSHAW  
ROSE MARIE GUILLOT

ROSE LENA  
VINCENT LENA  
MARIE LIPOMA



HILL HUNT  
KATHLEEN HYDE  
BETTY JEANSONNE

BARBARA MICHEL  
CATHERINE NETTLES  
JANET NORMAND



*Best of Luck to  
nice girl  
Belley*

M. J. JEANSONNE  
DIANE JONES  
KELLY LAFLEUR

JACK OUBRE  
PATTY JO RICHARDSON  
CECILIA PIAZZA







*Forget  
Pam*



*To the best girl in  
the world and B.H.S.  
Harry*

BONNIE ROBERTS  
MARILYN SCOTT  
HARRY SOUTHALL



*To a girl that's  
2 sweet  
2 be  
4 gotten  
Best Always,  
Andrew*

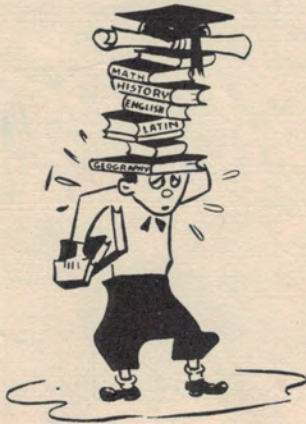


*Best of luck  
to the sweetest  
girl I know.  
Always,  
Pam*



ANDREW VIDRINE  
PROVELA WILSON  
CONSTANCE ZIMMER

*Do  
I can't think of any thing  
to say in French so the  
signature will do.  
Au Revoir,  
Connie*





ROBERTS  
N SCOTT  
OUTHALL

BETTY DUCOTE  
JAMES KELLEY



*Betty Ducote  
Lunch 1st year*



*Lunchie*

VIDRINE  
WILSON  
NCE ZIMMER

FLORENCE MOREAU  
PATSY TURNER



*Best of Everything  
with Jack always  
blouse*

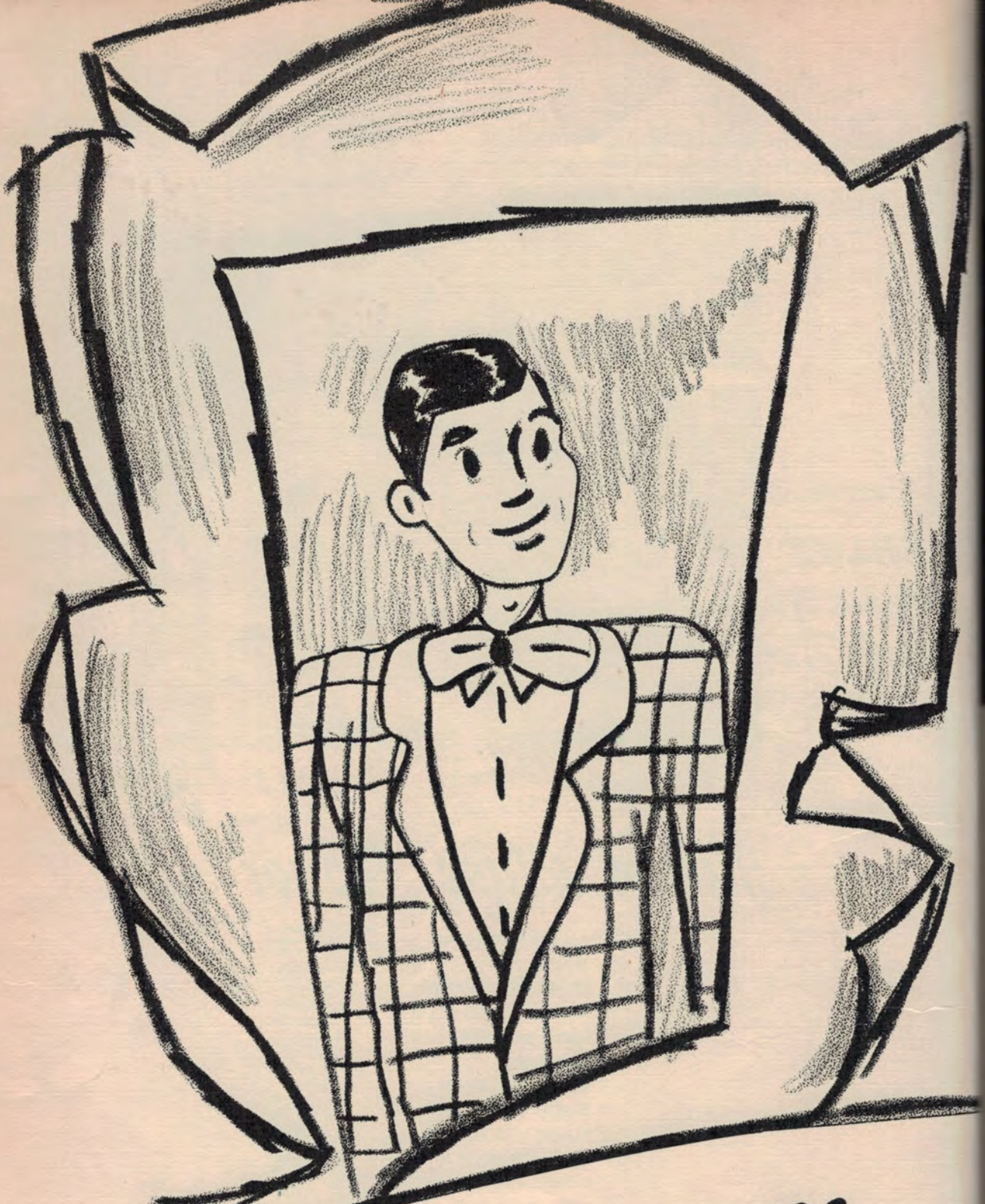


# Junior Class Honor

first semester

- MUREL ELISE BILES
- AMY RUTH ELLIOTT
- BARBARA FRANK
- BILL HUNT
- KATHLEEN HYDE
- JAROD LEMOINE
- MARIE LIPOMA
- MARILYN SCOTT
- CONSTANCE ZIMMER





Sophomore





## *Sophomore Class Officers*

President - - - - - NANCY JO LaPRAIRIE  
Vice President - - - - - GAIL LANDRY  
Secretary - - - - - LEODOCIA POPE  
Treasurer - - - - - JOHNNY HAYDEL  
Reporter - - - - - PAM BILES



Patricia Allums

E. J. Andrus

Dave Aymond



Jesse Baker

Hilda Belanger

Alvin Bernard



*Best of luck  
w/ Billeaud  
B.O.*

William Billeaud

Pam Biles

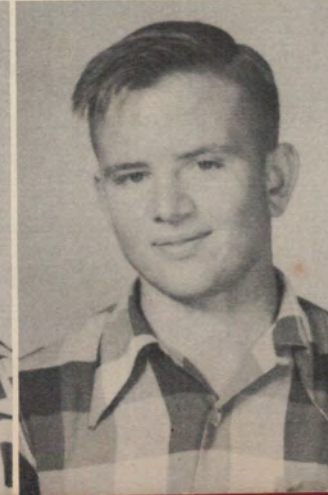
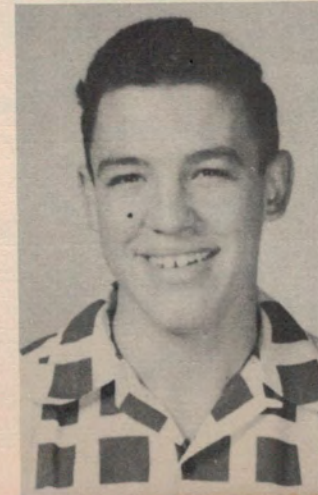
Glenda Boone



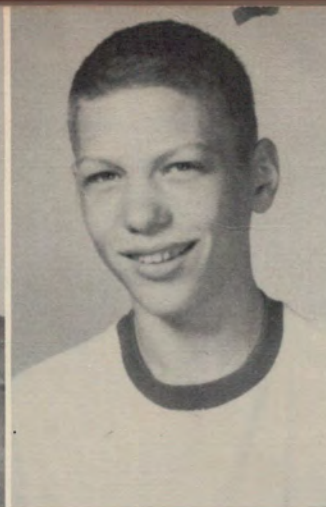
Marcus Bordelon

Stanley Bordelon

Ralph Bernard





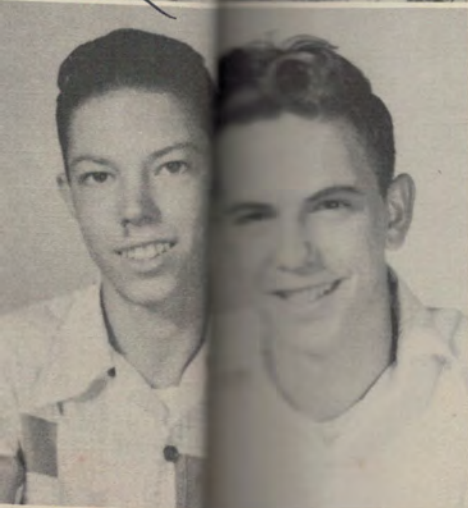


*Good luck all your life - Ralph Crouch*

Len Brown

U. L. Couvillion

Ralph Crouch



Charles Deshotel

Lois Devillier

Joseph Didier



Carl Escude

Eura Mae Firmin

Shirley Franks



Walter Franks

Gene Gage

Clarabell Guillory



Yvonne Hairford



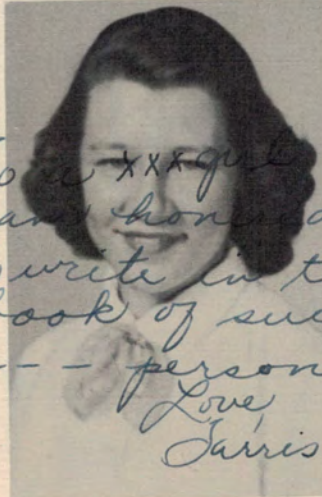
Johnny Haydel



Mary Hyde



Terry Jeansonne



Betty Johnson



Levonina Johnson



*John xxxxxx  
I am honored  
to write in the  
book of such  
a --- person.  
Love,  
Jarris*

W. J. Juneau



Barbara Kojis



Clyde Lacour

Photo not  
AVAILABLE

*Stay as sweet as  
you are.  
Good Luck!  
Barbara K.*

*Remember when  
I come to your house  
about a year ago, you  
were pretty then but  
you are even prettier  
now.*

Jerry LaFleur



Gail Landry

Larry Lanier

*"O girl"  
Jerry LaFleur  
Gail Landry*

SWEETS

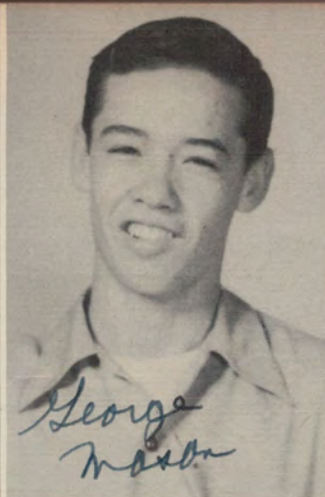


NO PHOTO

No Photo  
AVAILABLE







Nancy Jo LaPrairie

George Mason

Elaine McCoy



Shirley McLemore

Mona Mitchell

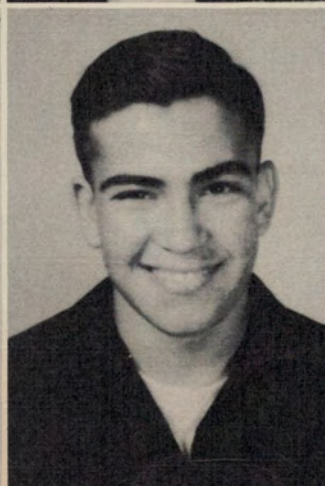
Marguerite Mutz



Paul Plaisance

Leodocia Pope

Marlene Mutz



*Best of luck to a nice girl  
Ronald Sawyer*

Bobby Richardson

Jerry Sanders

Ronald Sawyer



Dale Spence

Louis Witty

R. L. Laborde



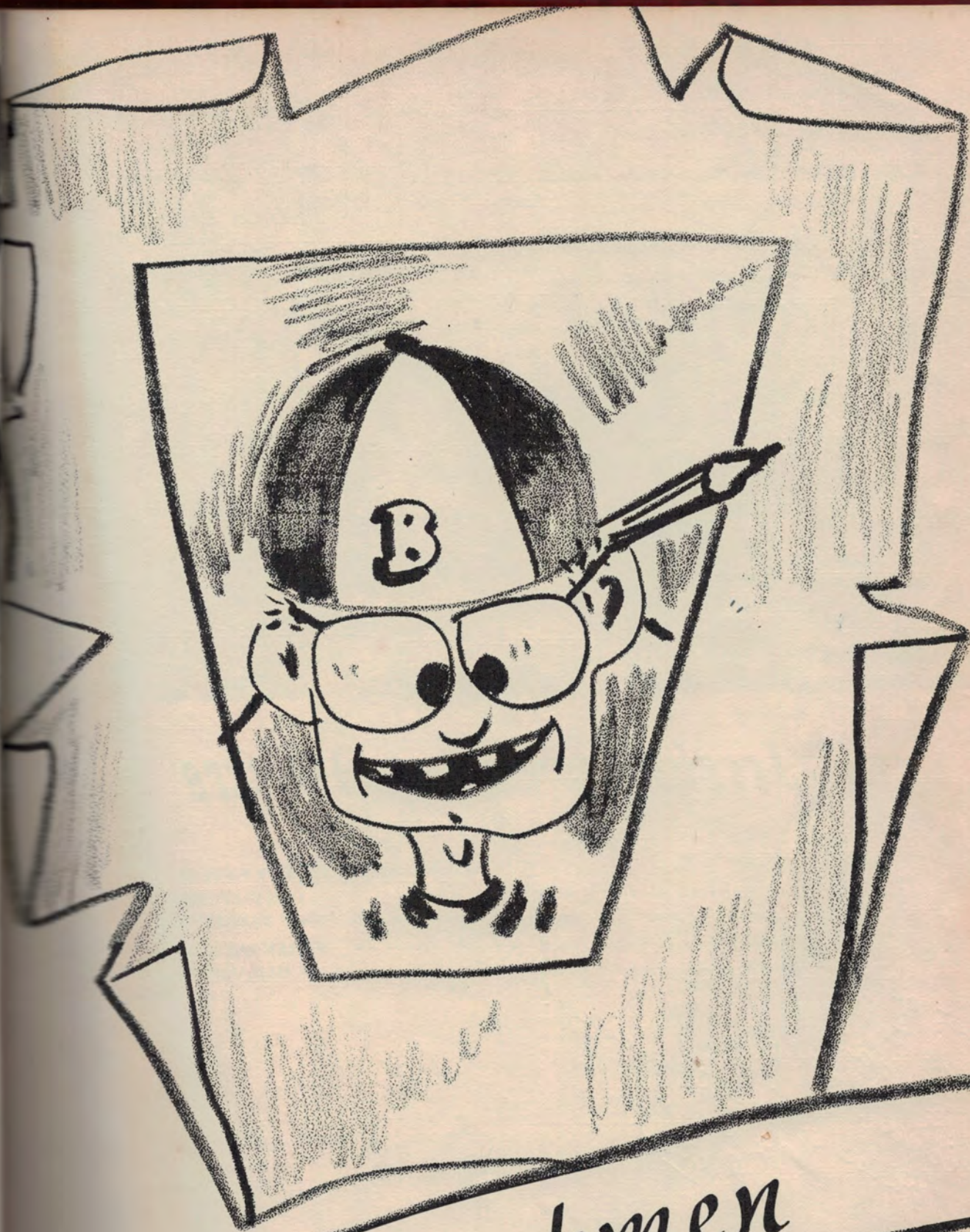
Johnny Tagliarino

Nickie Glaviano

*Best of luck,  
"Poker Dots"  
Johnny "Jag"  
Glaviano*







Freshmen





## Freshmen Class Officers

President	-----	PATSY JOHNSTON
Vice President	-----	DON FLETCHER
Secretary	-----	PEGGY VANCHIERE
Treasurer	-----	VIVIAN RAE LENA
Reporter	-----	GAIL GLOVER

Best of  
 luck to a  
 swell gal  
 and wonderful  
 friend.  
 Je vous aime toujours!  
 Love,  
 Patsy





Sherlin Abney  
 Emma Lou Aymond  
 Donald Baronne



Roslyn Baronne  
 Deanna Beaubouef  
 Carol Bordelon



Irma Bordelon  
 Betty Brou  
 Patsy Brown



Lionel Burke  
 S. L. Campbell  
 Paul Charrier



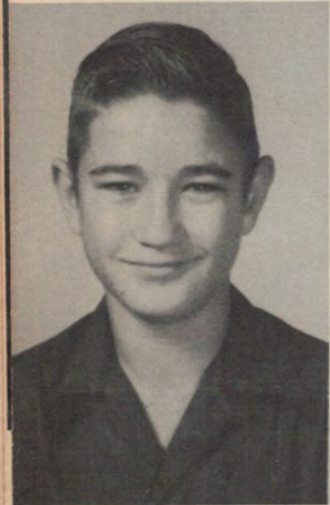




Errol Chatelain

Harold Cullen

John Clark



Robert Deglandon

Dorothy Delafasse

Gerald Dubroc



Ann Ducote

Floyd Ducote

J. N. Dufour



C. J. Dupont

Barbara Dupree

Don Fletcher



Chatelain

Evelyn Franks



d Cullen

Gail Glover



Clark

Genevieve Goudeau



Deglandon

Lloyd Guillot



y Delafasse

Sammie Guillot



Dubroc

Floyd Havard



cote

Barbara Hines



ucote

Jeannette Jeansonne



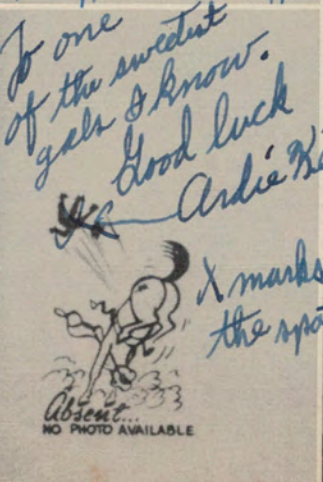
ufour

Patsy Johnston



pont

Ardie Keller



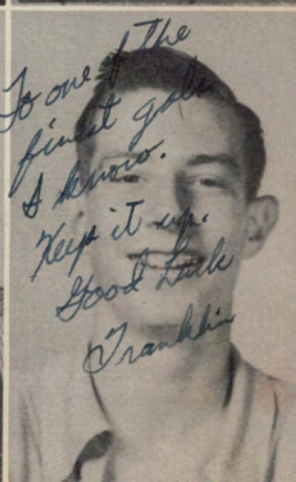
Dupree

Henrietta Kelley



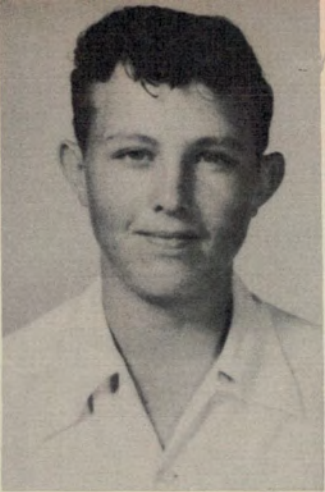
cher

Franklin Kyle



NO PHOTO AVAILABLE





Vivian Rae Lena

Aldridge Lutz

Fern Lutz



Bernard Malone

Louise Mayeaux

Margaret Mayeaux



*Lots of luck  
Donna*

Bertha Maxwell

Docksy McCoy

Donna Mulhearn



John Nash

Ray Nettles

Mary Ann Nicholson



Vivian Rae Lena

Aldridge Lutz

Fern Lutz

Bernard Malone

Louise Mayeaux

Margaret Mayeaux

*lots of luck  
K.anna*

Bertha Maxwell

Docksy McCoy

Donna Mulhearn

John Nash

Y Nettles

Mary Ann Nicholson

Raymond Nicholson

Anthony Palermo

Clayton Palermo

Grace Perkins

Anthony Rabalais

Freddie Rabalais

Jo Ann Reynolds

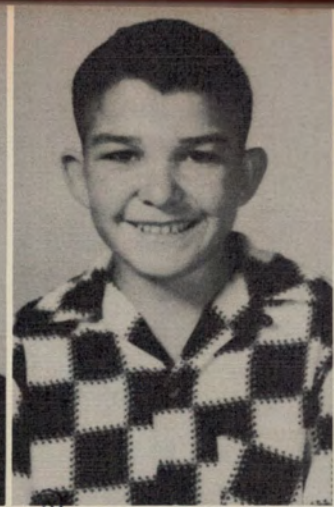
Willie Glynn Reynolds

Jean Rox

Floyd Roy

Richard Roy

Irwin Scallan







Lynette Stokes

Norma Jean Tubre

Loraine Turner



Peggy Vancheire

Fred Vollman

R. J. Dupuy





Stokes

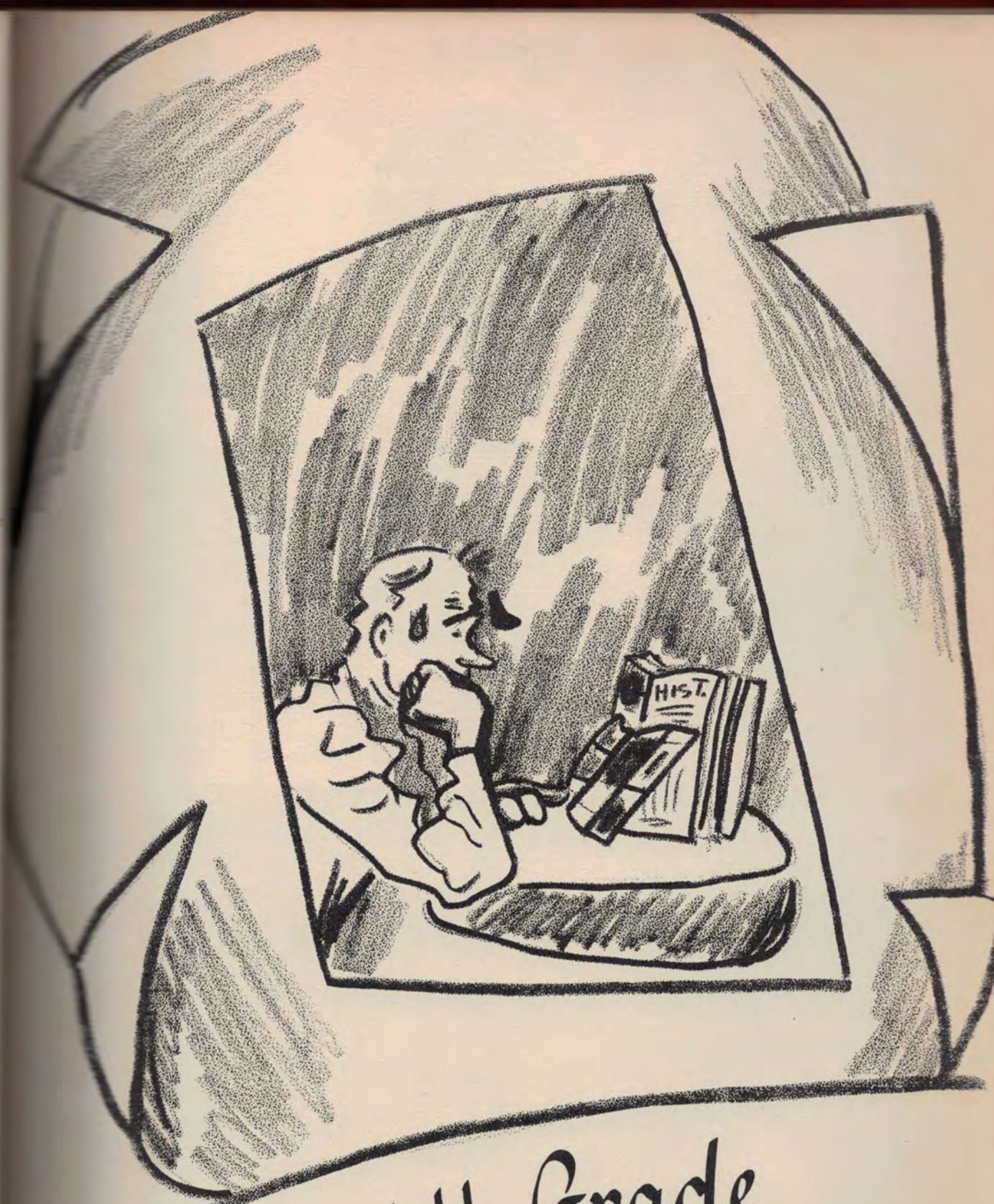
ean Tubre

Turner

ancheire

lman

puy



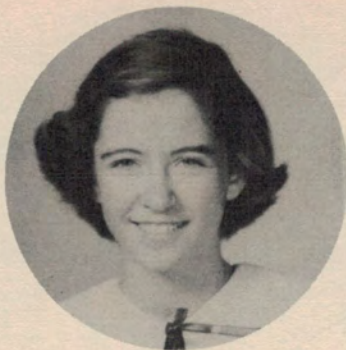
# Eighth Grade



# 8-A

CLASS COLORS  
Green and White

CLASS FLOWER  
Violets



President  
Suzanne Swann



Secretary  
Carol Brister



Vice President  
Terry Brown



Treasurer  
Merrie Ann Woods





# S-B

CLASS COLORS  
Pink and Green

CLASS FLOWER  
Camelia



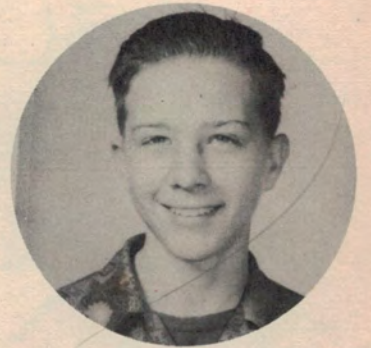
President  
Gregory St Romain



Secretary  
Jane Durand



Vice President  
Elaine Blalock



Treasurer  
Dickie Biles



er  
Woods







8 - B CLASS MEETING

TRUMPET STAFF



8 - A BOOK CLUB

8 - B PLAY



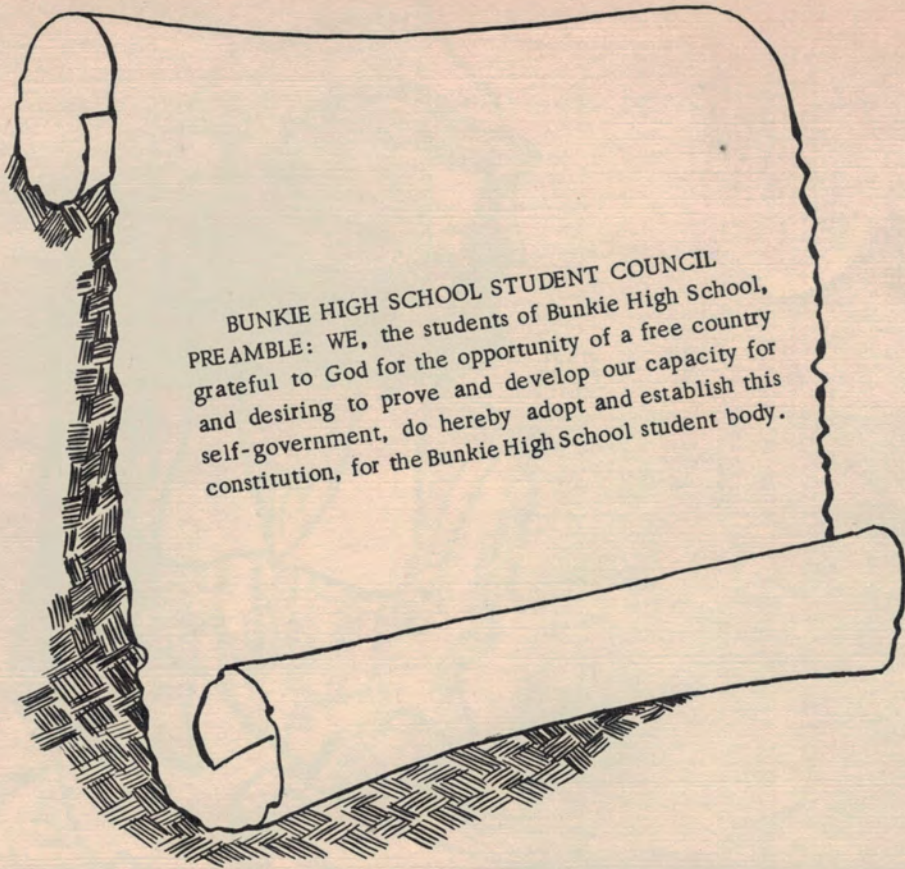




# Organizations







**BUNKIE HIGH SCHOOL STUDENT COUNCIL**  
PREAMBLE: WE, the students of Bunkie High School,  
grateful to God for the opportunity of a free country  
and desiring to prove and develop our capacity for  
self-government, do hereby adopt and establish this  
constitution, for the Bunkie High School student body.



ADVISOR





ELAINE BARRON  
Editor

TRUMPET

STAFF

- Elaine Barron - - - - - Editor
- Mary Lee Armand - - - - - Assistant Editor
- Jackie Rachal - - - - - Business Manager
- Johnny Haydel - - - - - Assistant Business Manager
- Charles Bordelon - - - - - Artist
- Jerry Ryan - - - - - Boy's Sports
- Patsy Brister - - - - - Girl's Sports
- Mr. Kirby Tyrone - - - - - Advisor

NEWS

FEATURES

- Marilyn Scott - - - - - Sabia Jeneau
- Pam Biles - - - - - Sylvia Franks
- Gail Glover - - - - - Don Hines
- Beverley Duplechin - - - - - Constance Zimmer
- Murel E. Biles - - - - - Marline Calcote
- Amy R. Elliott - - - - - Kathleen Hyde







BAND ON STAGE

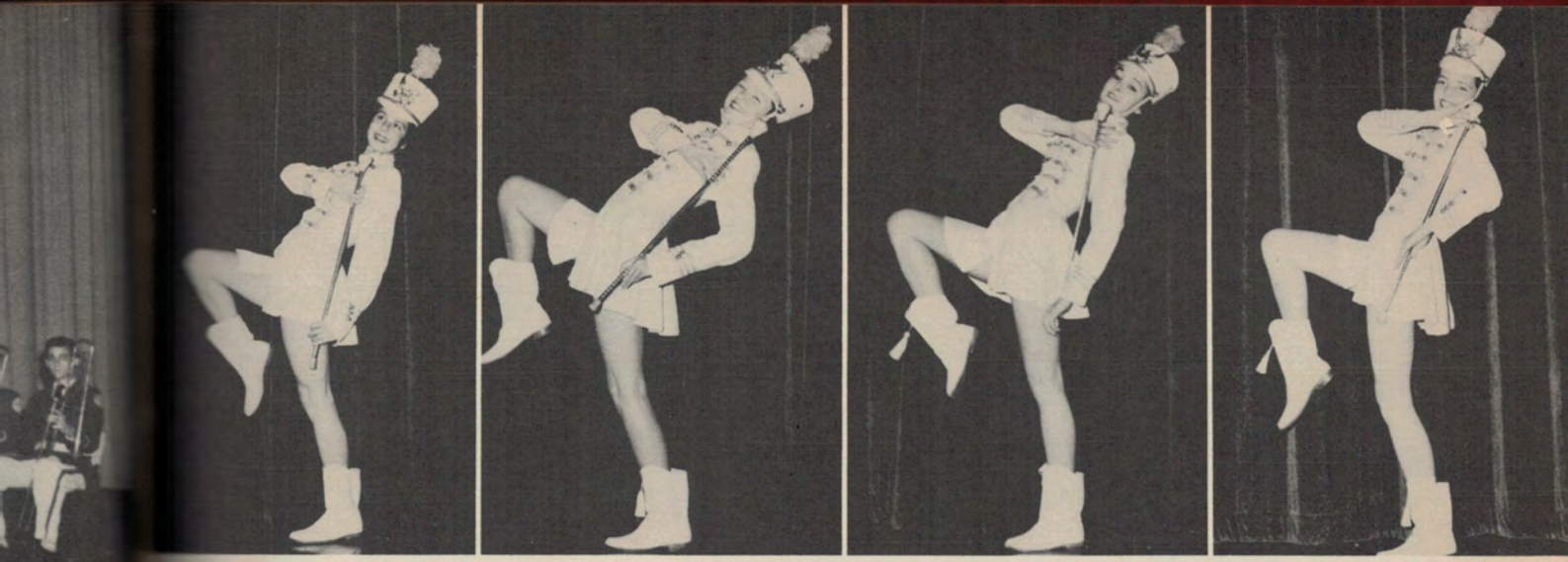


BAND ON PARADE

BAND PLAYING AT FOOTBALL GAME







ELAINE BARRON

PATTY RICHARDSON

LOIS DEVILLIER

ALICE RACHAL



PATSY BRISTER

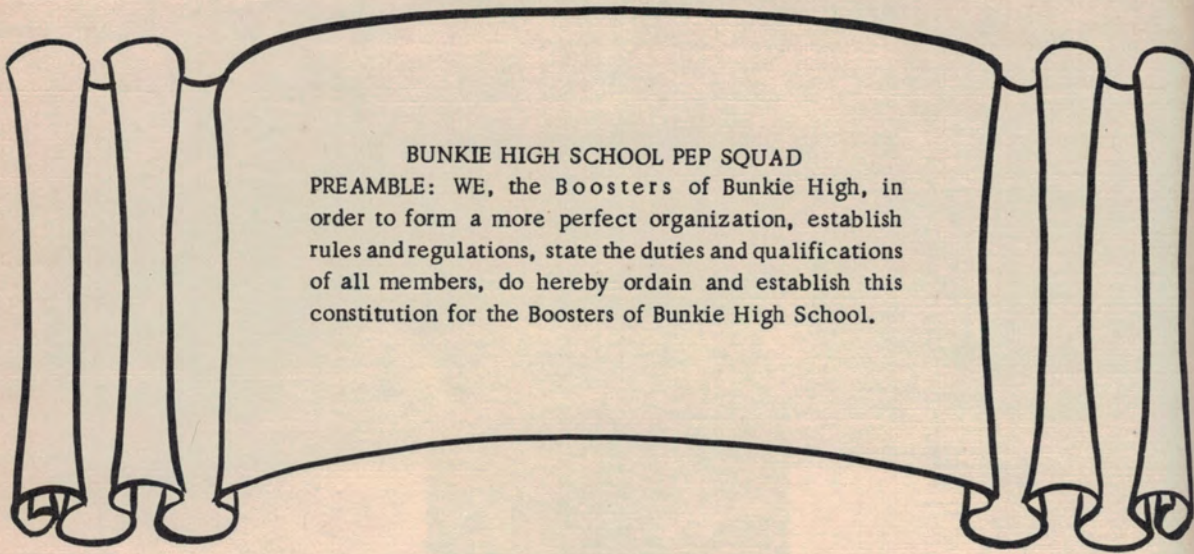
HEAD MAJORETTE

BAND PRACTICE



GAME









Airplane honoring the Pilot Club. Half-time Breaux Bridge.



"L" for Lions Club, also at Breaux Bridge-Bunkie game.



Ushers for the Bunkie Yambilee Contest. Left to right: Hilda Firmin, Nancy LaPrairie, Diane Jones, Constance Zimmer and Amy Ruth Elliott.



Officers of Pep Squad; Bottom Row, left to right: Constance Zimmer, secretary; Elaine Barron, president; Diane Jones, vice president; Nancy LaPrairie, squad captain; Murel Biles, reporter; Hilda Firmin, squad captain; Amy Elliott, assistant squad captain.



T H B



CLUB





Bottom Row, left to right: Coach R. Edwards, J. Crouch, L. Newton, L. Brown, E. Baronne, J. Ryan, H. Southall, Coach S. Catha. Second Row, left to right: B. Hunt, E. Andrus, D. Hines, R. Desselle, C. Bordelon. Third Row, left to right: G. Mason, M. Townsend, M. Lutz, S. Lena, B. Richardson. Fourth Row, left to right: K. LaFleu, O. Howard, R. Devillier, J. Roberts, A. Keller. Fifth Row, left to right: S. Guillory and W. Juneau.

#### FOOTBALL SCORES

Bunkie - - - - -	-32	A I C (Opelousas) - - - -	-12
Bunkie - - - - -	6	Baker - - - - -	7
Bunkie - - - - -	-49	Churchpoint - - - - -	0
Bunkie - - - - -	-34	LaSalle - - - - -	-12
Bunkie - - - - -	-46	Breaux Bridge - - - - -	7
Bunkie - - - - -	-53	Redemptorist - - - - -	0
Bunkie - - - - -	-38	Menard - - - - -	6
Bunkie - - - - -	-43	Leesville - - - - -	6
Bunkie - - - - -	-39	Marion - - - - -	-25
Bunkie - - - - -	7	Marksville - - - - -	13
Bunkie - - - - -	-20	West Lake - - - - -	12
Bunkie - - - - -	0	Delhi - - - - -	-24
Bunkie - - - - -	-26		0

Southwest District Playoff  
State quarter finals







F H A CLUB MEMBERS



F H A CLUB MEETING



ASSEMBLY PROGRAM



DEMONSTRATION ON CHILD CARE



F H A OFFICERS









BUNKIE CHAPTER FUTURE FARMERS OF AMERICA



Mr. St. Rom  
quality demo







BARBARA DUCOTE  
FFA Queen



ANDREW VIDRENE  
Rotary Club Award Winner



Mr. St. Romain  
gives poultry demonstration.



Grass Judging and  
Pasture Team



Public  
Speaking  
Team



Officers



Parliamentary Law Team  
Contestants.



# Cheer Leaders



Top, left to right: Terry Jeansonne, Bobbie Jean Harper and Jackie Rachal.  
Bottom, left to right: Barbara Kelly, Pat Feazel and Bonnie Roberts.

# Pantherettes



Top, left to right: Patsy Brown, Donna Lou Mulhern, Gail Glover and Ann Ducote.  
Bottom, left to right: Catherine Nettles, Patty Richardson and Sharon Richardson, Mascot.





*Senior English Club*



*Junior English Club*





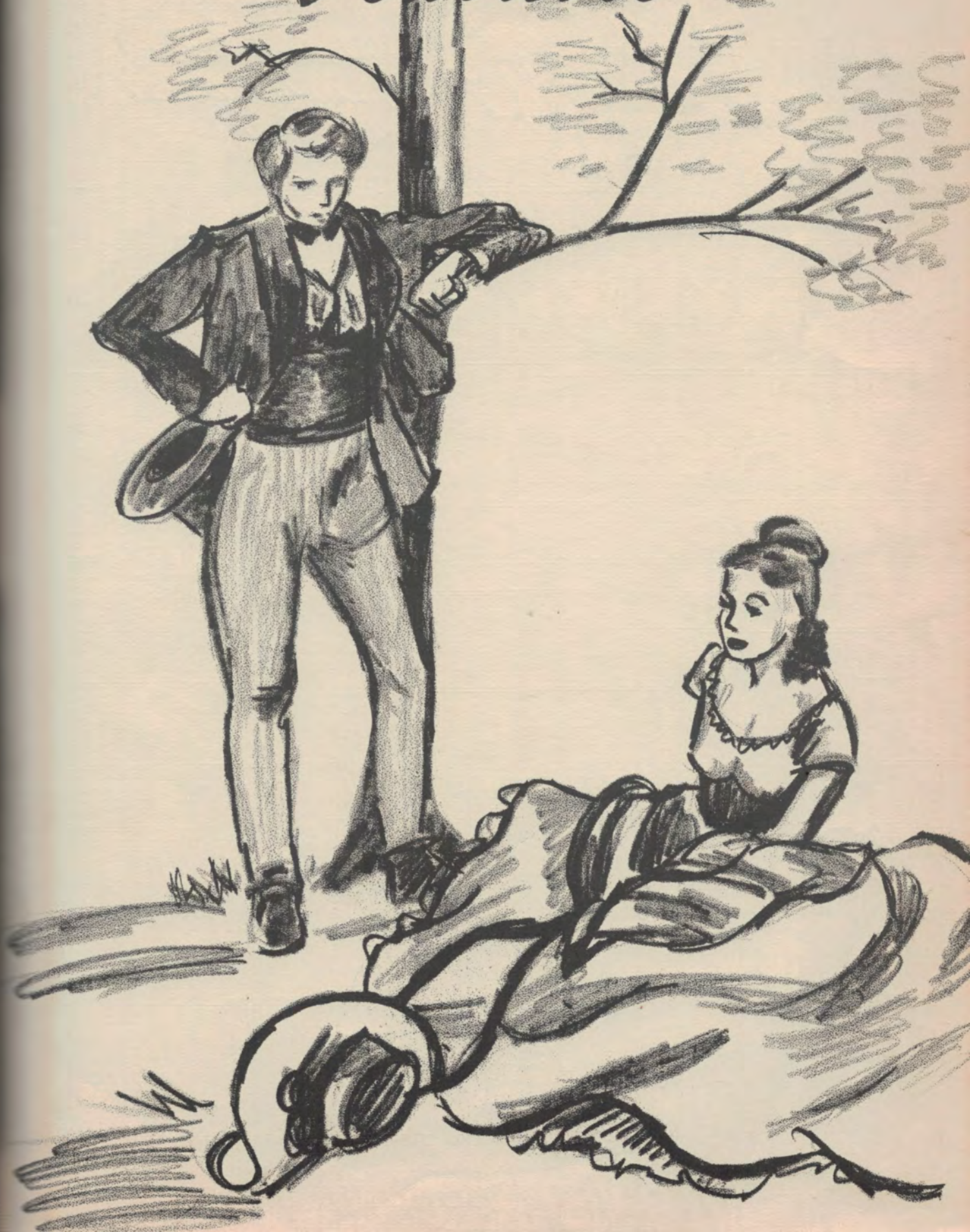
*Sophomore English Club*



*Freshman English Club*



# Features

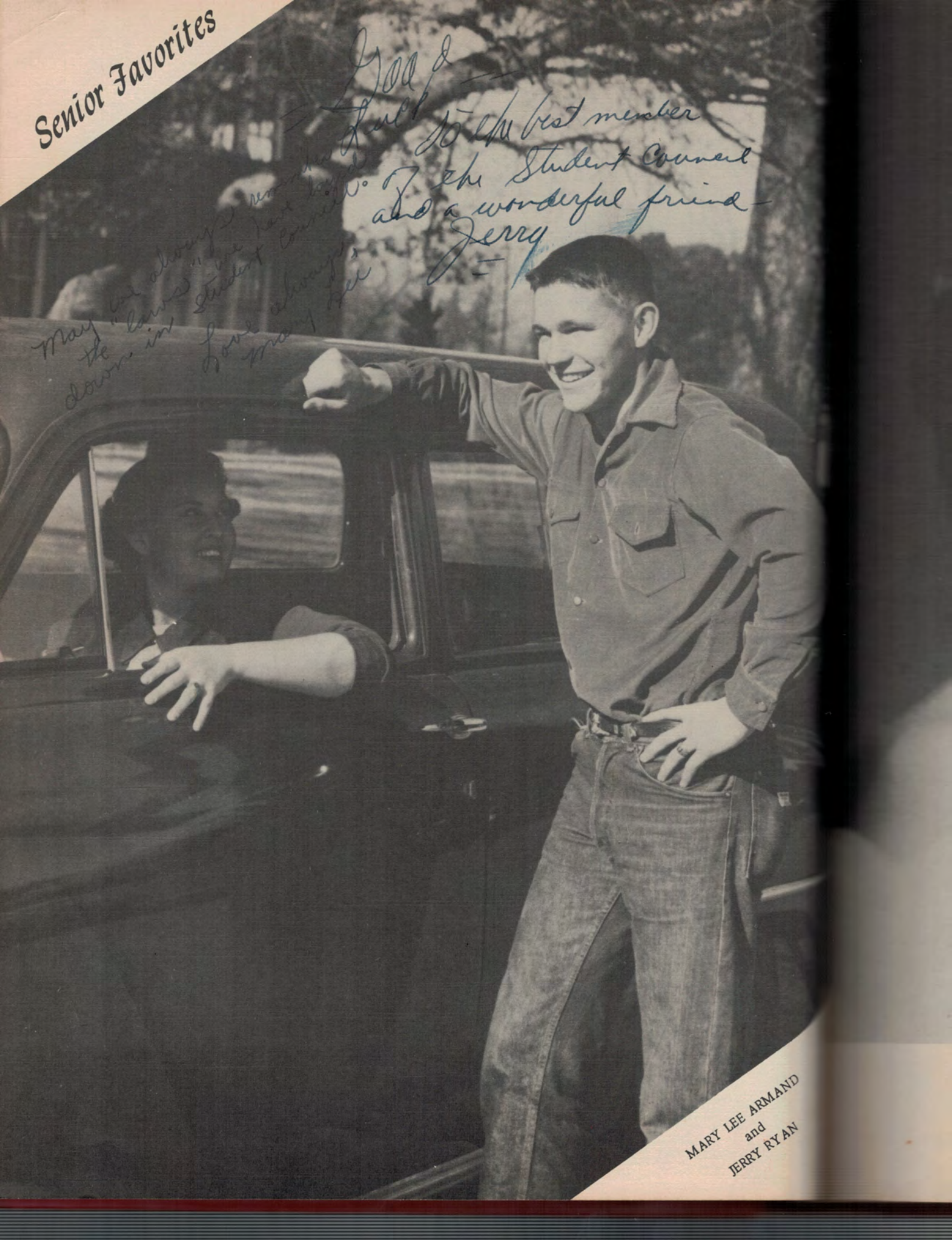




Senior Favorites

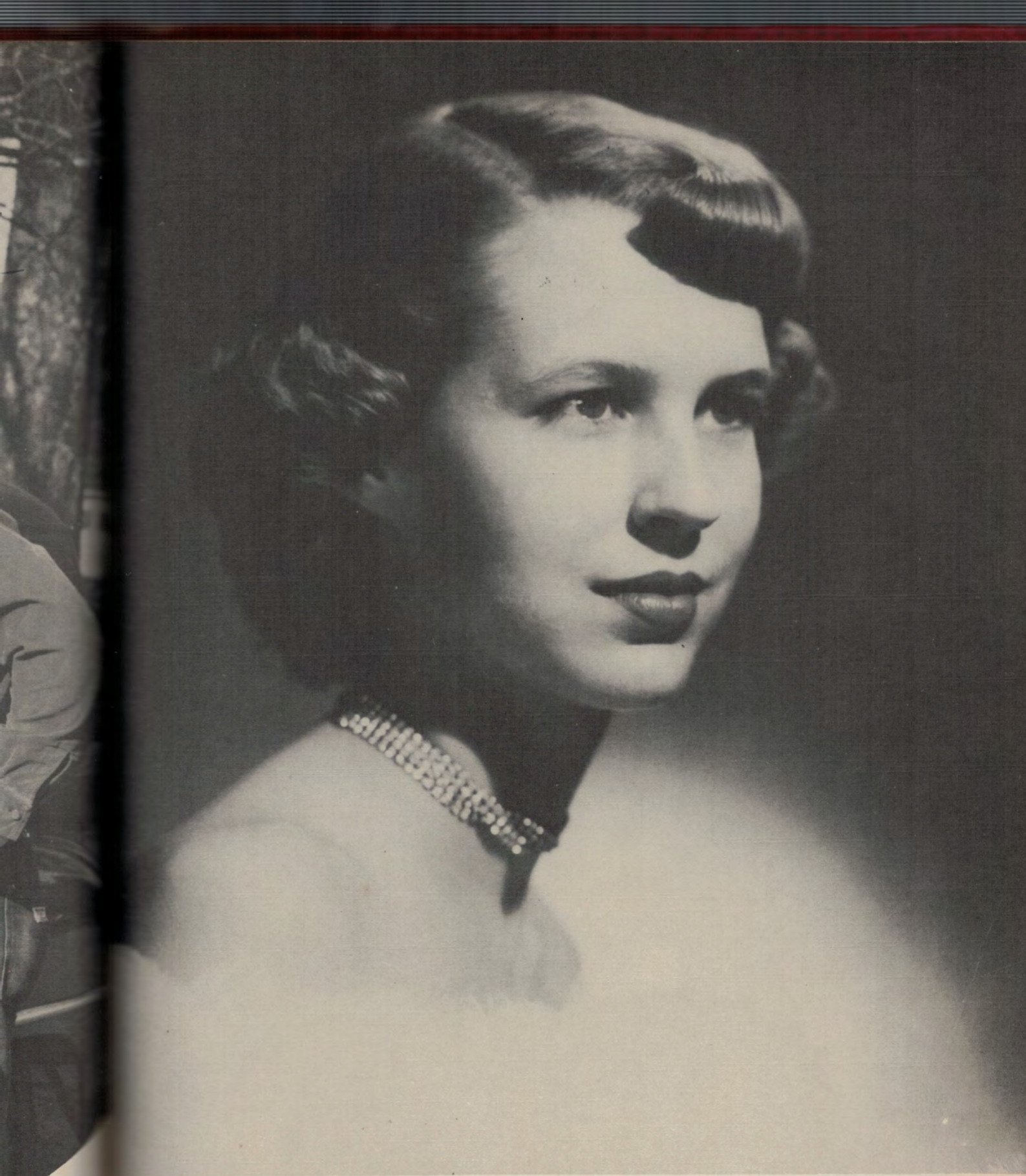
May we always remember  
the "laws" we have laid  
down in Student Council.  
Love always,  
Mary Lee

God &  
I will be the best member  
of the Student Council  
and a wonderful friend  
Jerry



MARY LEE ARMAND  
and  
JERRY RYAN





*Senior Beauty*

PATSY BRISTER

ARMAND  
and  
ERRY RYAN





*Junior Favorites*

MARILYN SCOTT  
and  
BILL HUNT





*Junior Beauty*

MARILYN SCOTT

SCOTT  
and  
L HUNT



Sophomore Favorite

TERRY JEANSONNE  
and  
GEORGE MASON

*Good luck honey!!  
George Mason*





HEANSONNE  
ad  
MASON



Lots of love to  
a Schmoov!  
Nancy Jo

# *Sophomore Beauty*

NANCY JO LA PRAIRIE



Freshman Favorites



To a real  
sweet  
nig boy +  
friend  
Barbara

BARBARA HINES  
and  
DON FLETCHER





*So a swell  
Gal.  
Lots of Luck  
Always  
-Bertha-*

# *Freshman Beauty*

BERTHA MAXWELL

MINES  
LETCHER



# Who's Who At



Humor

BARBARA HINES-HARRY SOUTHALL

*Remember la vache and le veau.  
Remember student council,  
But most of all, remember me,  
Keith*



Character

ELAINE BARRON-BILL HUNT



Intelligence

ELAINE BARRON-KEITH GUILLORY



Thoughtfulness

MARY LEE ARMAND-BILL HUNT



# Bunkie High



Ambition  
ELAINE BARRON-RUSSELL ALLOR



Athletic Ability  
TERRY JEANSONNE-JACK OUBRE



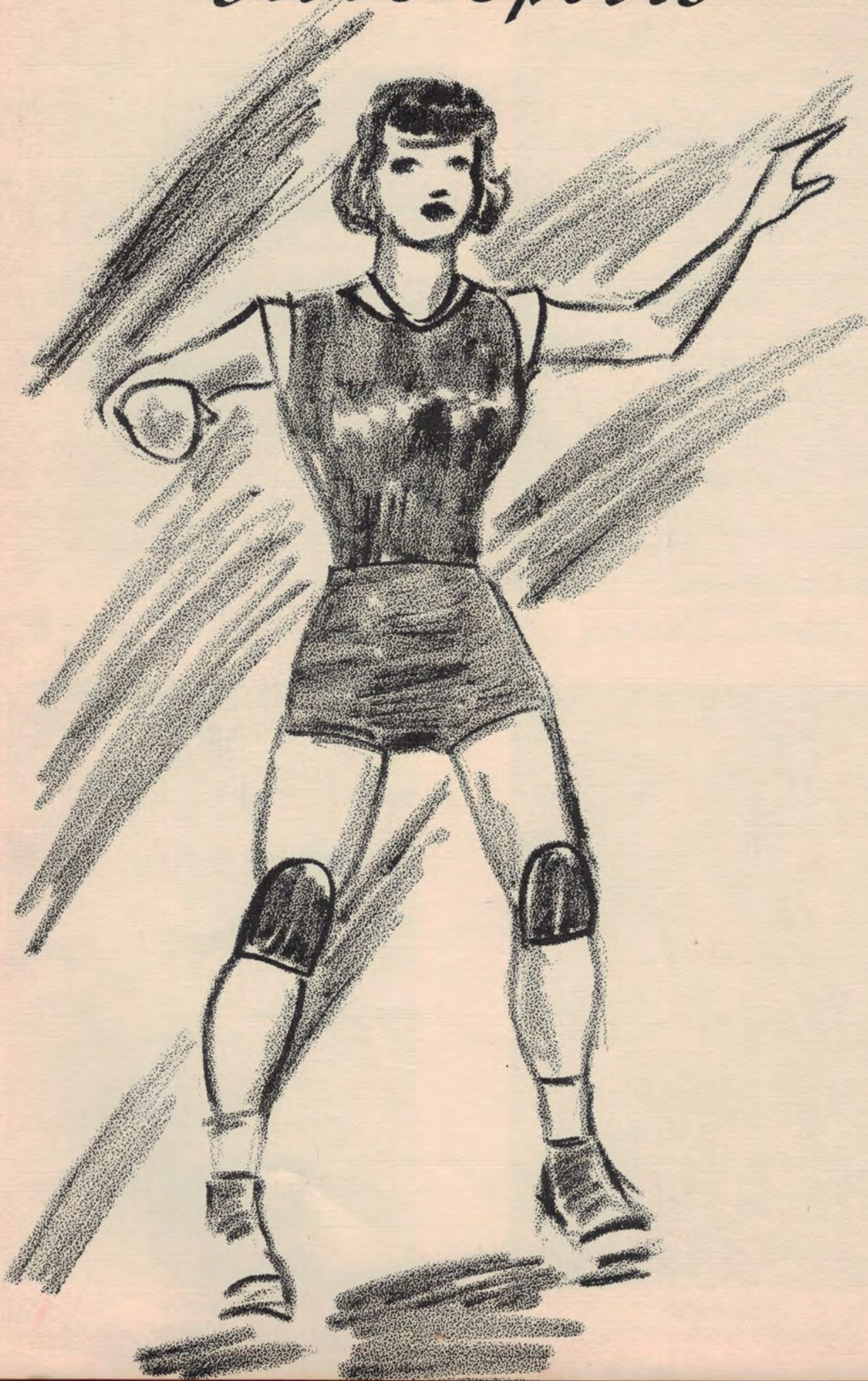
Personality  
LEODOCIA POPE-JERRY RYAN



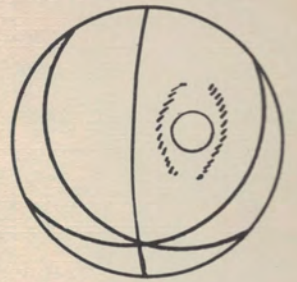
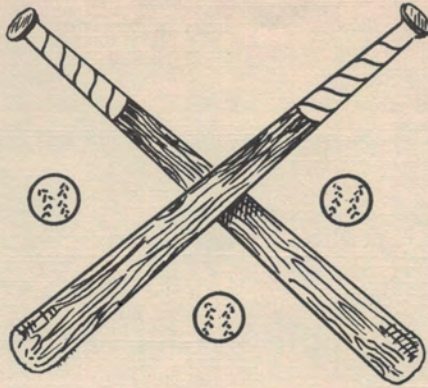
Leadership  
ELAINE BARRON-JERRY RYAN



# Girl's Sports







*To old efficiency  
Beverly Stafford*

BEVERLEY STAFFORD  
Coach



CAROL BRISTOR  
Manager



LEODOCIA POPE  
Assistant Manager





Left to right: P. Brister, E. Barron, N. LaPrairie, T. Jeansonne, T. Couvillion, L. Devillier, C. Bordelon, P. Biles, P. Allums, V. Lena, M. Mitchell, G. Glover.



Forward  
Letter--  
TILLIE C. COU



Captain  
PATSY BRISTER

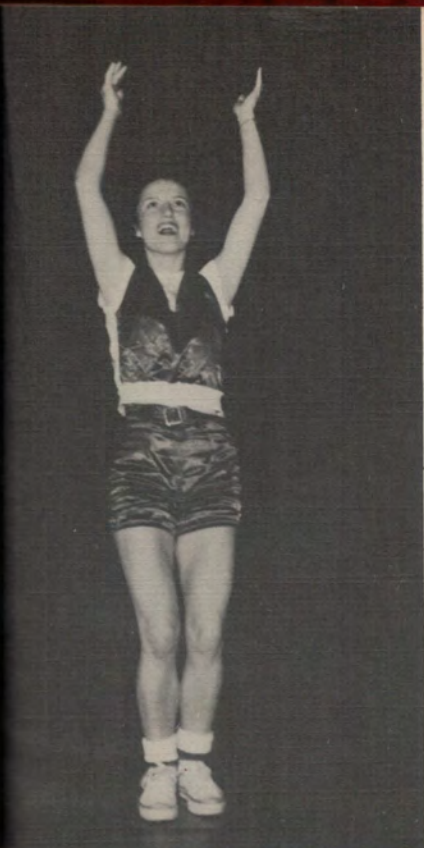


Co-Captain  
TILLIE C. COUVILLION



Guard  
Letter--4  
PATSY BRIST





Forward  
Letter--4  
TILLIE C. COUVILLION



Forward  
Letter--2  
TERRY JEANSONNE



Forward  
Letter--1  
LOIS DEVILLIER

*Best Manager  
to the Coast  
of the  
Year*



Guard  
Letter--4  
PATSY BRISTER



Guard  
Letter--4  
ELAINE BARRON

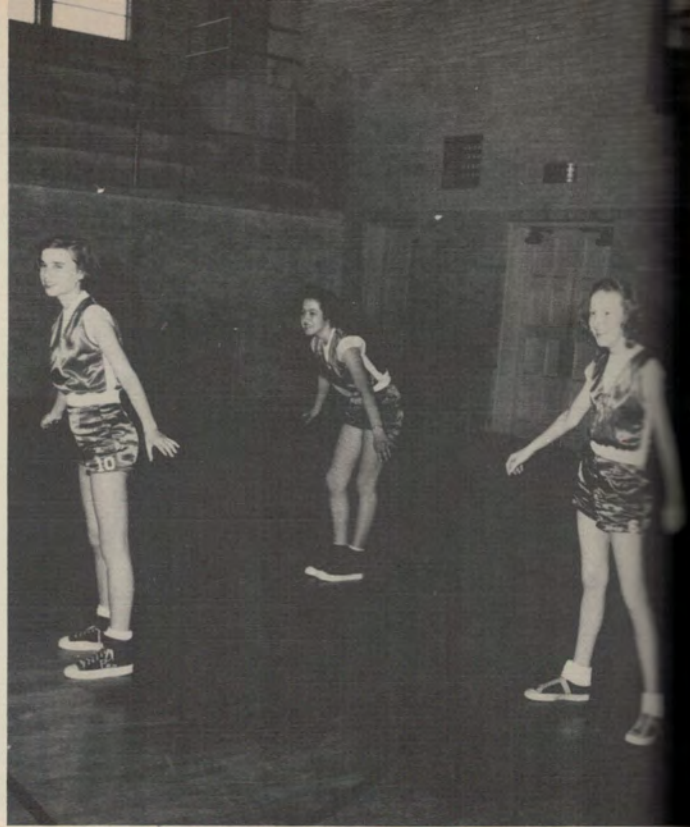


Guard  
Letter--2  
NANCY LAPRAIRIE





First String Guards  
NANCY LaPRAIRIE, PATSY BRISTER,  
ELAINE BARRON.



Second String Guards  
PAM BILES, MONA RAE MITCHELL,  
PATRICIA ALLUMS.



Our efficient score keepers at work.





ELL,



Second string forwards, left to right: Gail Glover, Carol Bordelon and Vivian Rae Lena.

*May you  
be our future  
manager during  
all the sports  
season.  
Baby Rae*



Tillie scores two.



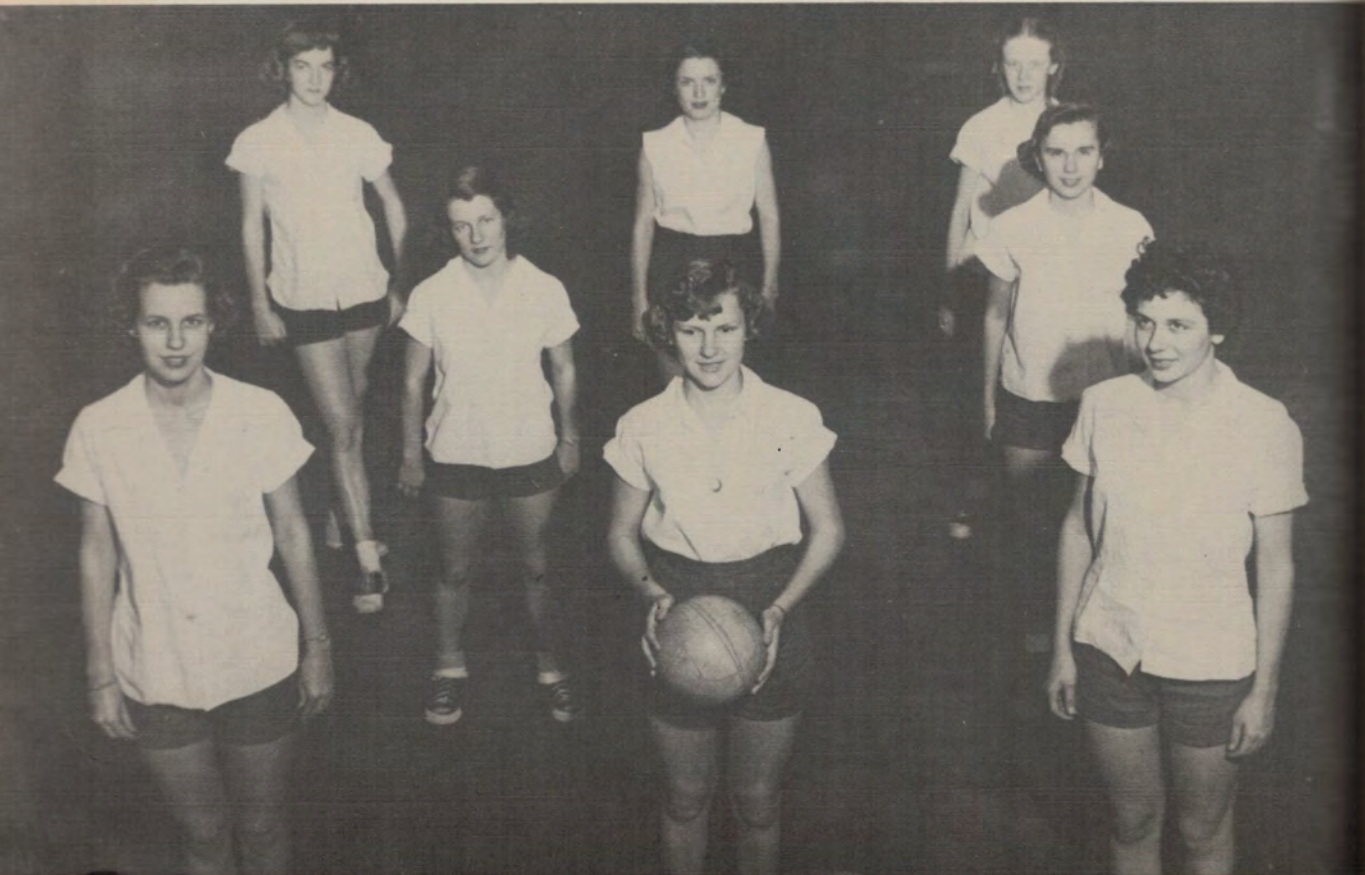
And the guards get it over.





Left to right: Pat Allums, Janet Normand, Patsy Brister, Gail Glover. Tillie Couvillion, Elaine Barron, Pam Biles and Terry Jeansonne.

## *Volley Ball*



A.





# Softball

# Team



B. HINES

*Very sweet person  
who has a real  
Smile. Dodge.  
Deanna*



V. LENA



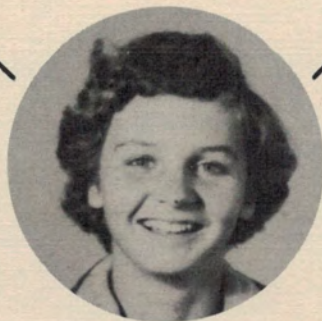
D. BEAUBOUF



L. JOHNSON



A. RACHAL



M. NETTLES



C. BORDELON



B. KOJIS

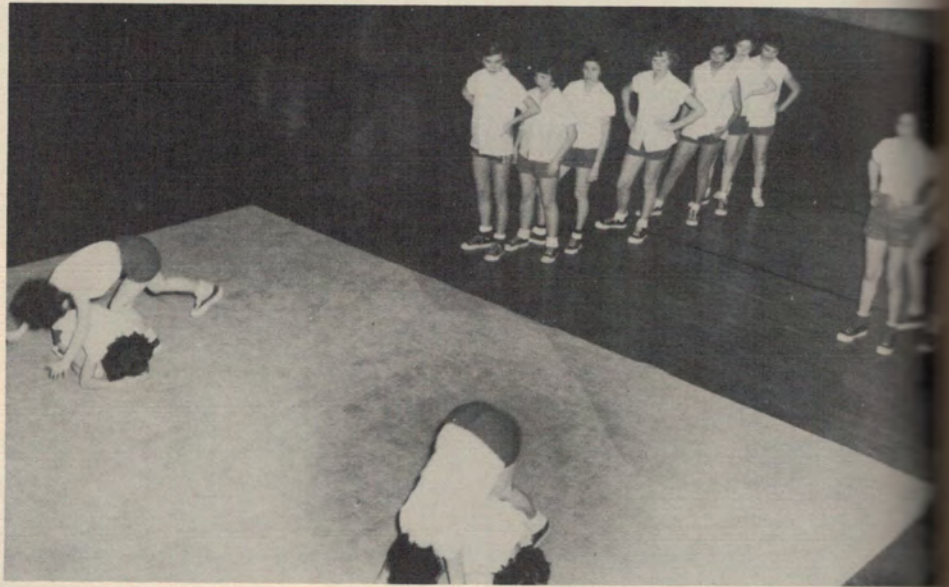
*Best of luck*

HILDA FIRMIN WITH SECOND PLACE PARISH TROPHEY.



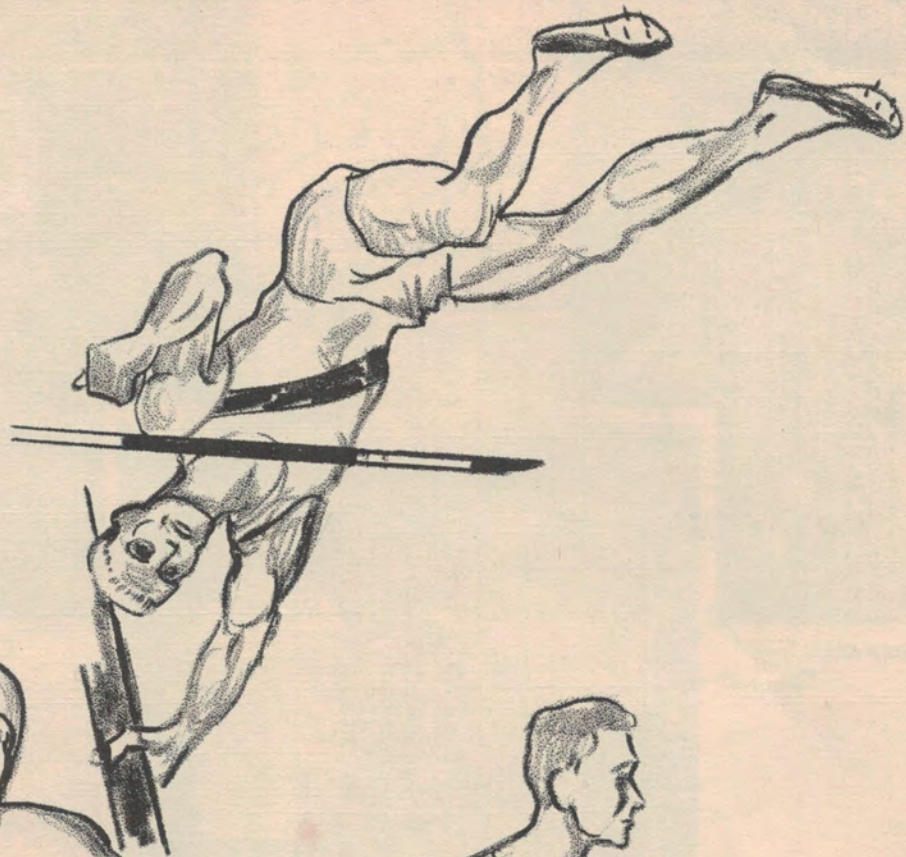
*Gym*

*Days*

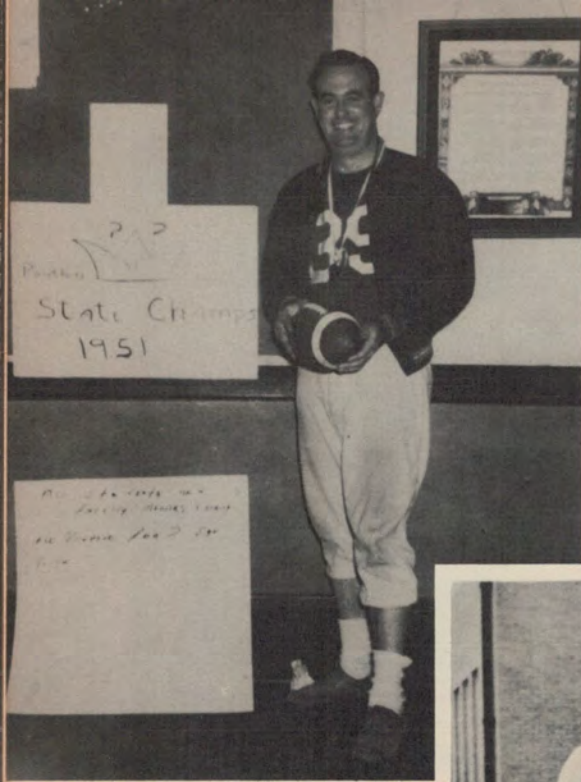




# Athletics







Coach RALPH EDWARDS



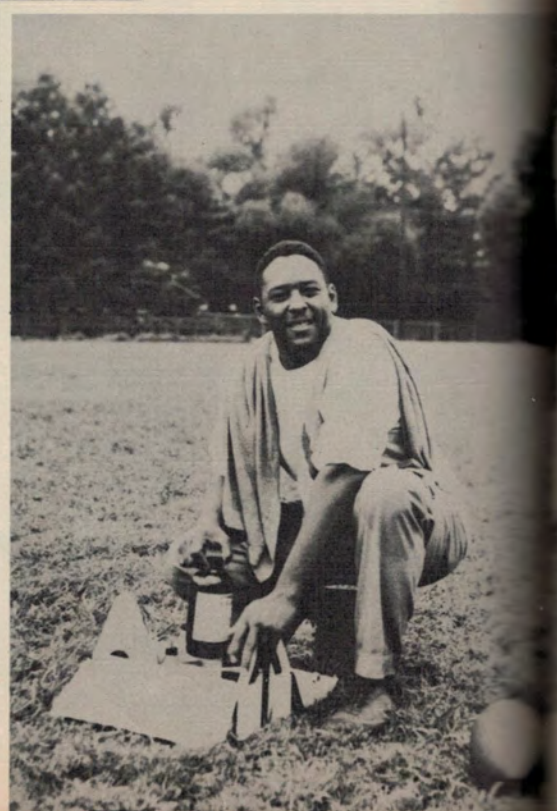
Coach STANLY CATHA



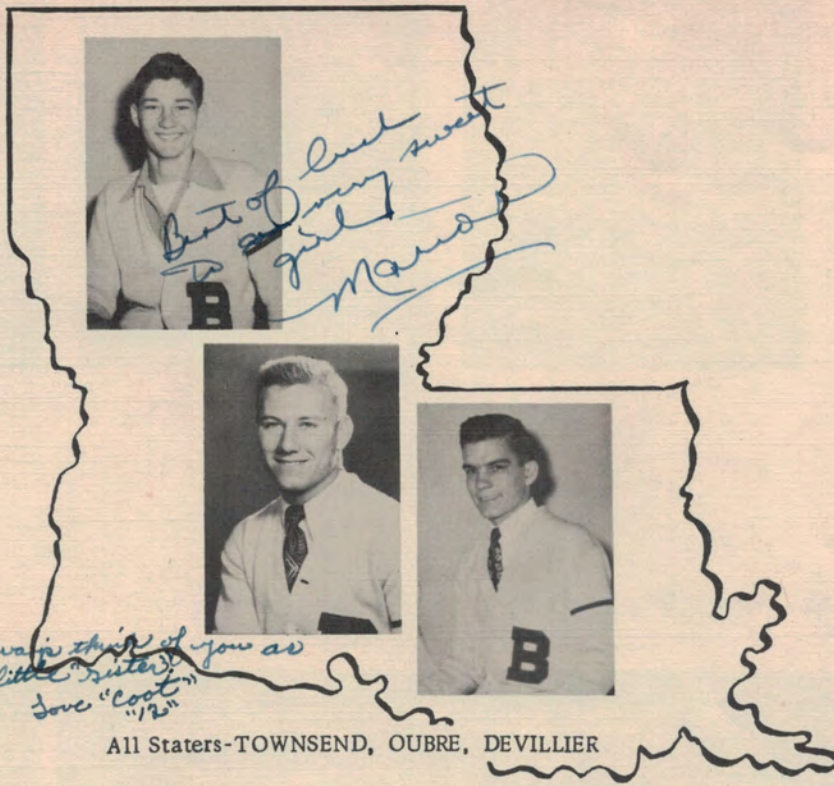
Manager HARRY SOUTHALL

Trainer JAMES BROWN

Captains  
RYAN and TOWNSEND





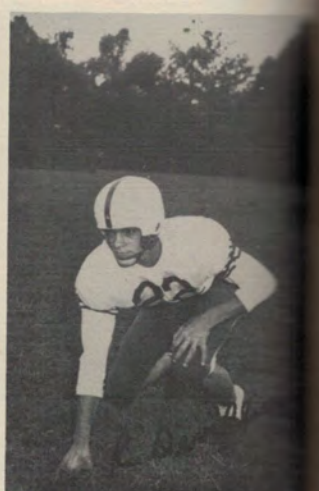
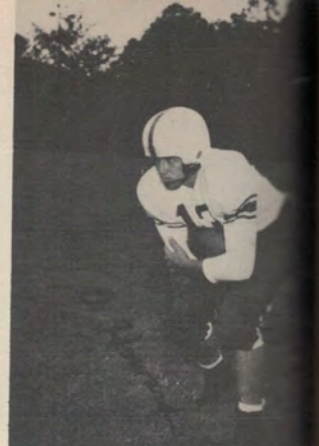


All Staters-TOWNSEND, OUBRE, DEVILLIER



SOUTHWEST DISTRICT CHAMPS





Sordocia you the sweetest most kindest  
 little girl I know besides Pam of course  
 If I ever had your willpower I'm sure  
 I'd make "All American" at S.M.U.  
 Don't forget you'll always be my  
 little "sister". You're a swell gal.  
 "Baby Jack"  
 "Cool Babe"  
 P.S.  
 "Sis"

always  
 me as  
 the one  
 the no  
 you  
 K

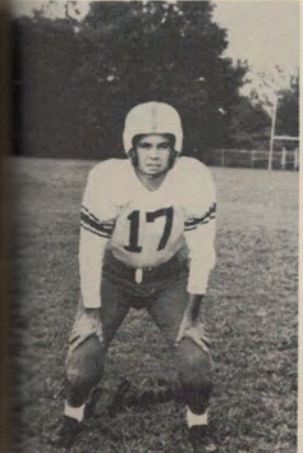






Always remember  
me as a friend &  
the one who keeps  
the radiator warm.  
your friends.  
A. Amier

Pine Prairie Plow Boy.  
E. J.







Jerry Ryan receives wrist watch from Coach Edwards for most valuable player of 1951.



Coach Edwards instructs Guillory

Ryan goes over for a Touchdown.





DEFENDING PARISH CHAMPIONS



Coach Edwards gives last minute instructions to Panthers.

Lutz fakes a pass to Devillier and scores.



Devillier makes a long one.







BILL HUNT



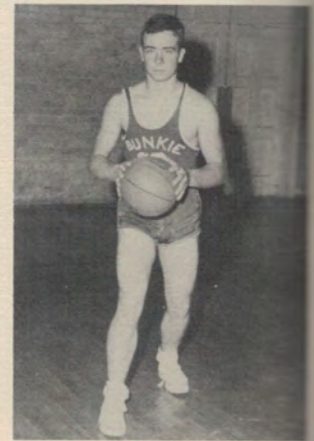
"BOO" DEVILLIER Captain



OTIS HOWARD



JERRY RYAN



EDDIE GRIMSHAW



M. C. LUTZ



HARRY SOUTHALL--Manager

*To a girl  
that will go very far  
and anything she may  
undertake Harry*



DON HINES



JACK OURBRE



Coaches, EDWARDS and CATHA



LEN BROWN



# Track



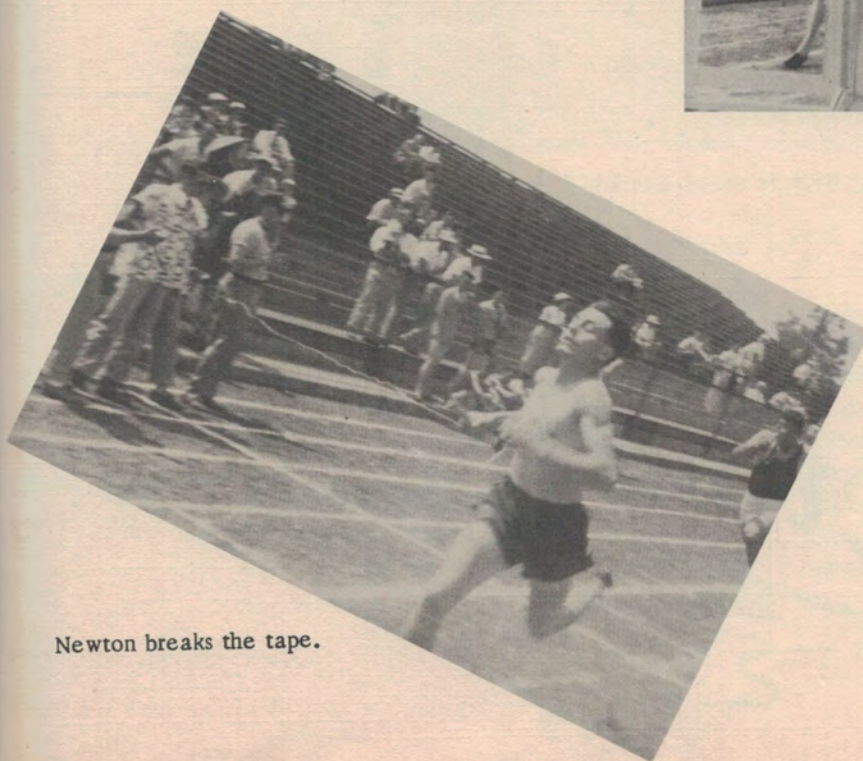
Devillier at Central.



Ryan takes this one.



Juneau takes the hurdles.



Newton breaks the tape.





# Activities



# Spring Festival



King JOHN and Queen VERONICA

## ROYAL COURT

1951

Queen--VERONICA DUCOTE

Maid--BOBBIE LESTER

Maid--PEGGY SAWYER

Maid--TRUDY ANDRUS

Maid--IRMA DUCOTE

Maid--ALPHA GREMILLION

Maid--LOUELLA PERRY

Maid--LAULETTE LOWREY

Maid--DORIS DEGLANDON

King--JOHN HEATH

Duke--BUDDY OVERBEY

Duke--NELSON CAMPBELL

Duke--BERT HALL

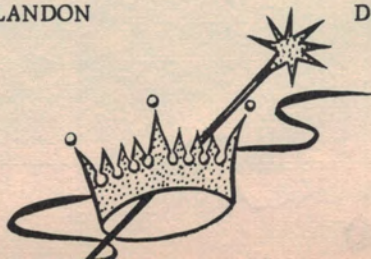
Duke--HERMAN GUILLOT

Duke--RONALD DAVIS

Duke--KENNETH BRADY

Duke--MAC LANDRY

Duke--MILTON BUTLER





# Avoyelles Parish Fair



Maid, left to right: Lynette Stokes, Nancy LaPrairie, Jo Mella. Not shown: Janet Normand.



Queen-PATSY



BUNKIE FLOAT



PATSY BRISTER  
Bunkie's Queen  
Parish Fair

St  
ju





MARTHA KAVANAUGH  
Homecoming Queen



Standing, left to right: Bobbie Jean Harper, senior maid, Martha Kavanaugh, queen, Marilyn Scott, junior maid. Seated, left to right: Nancy Jo LaPrairie, sophomore maid, Bertha Maxwell, freshman maid.



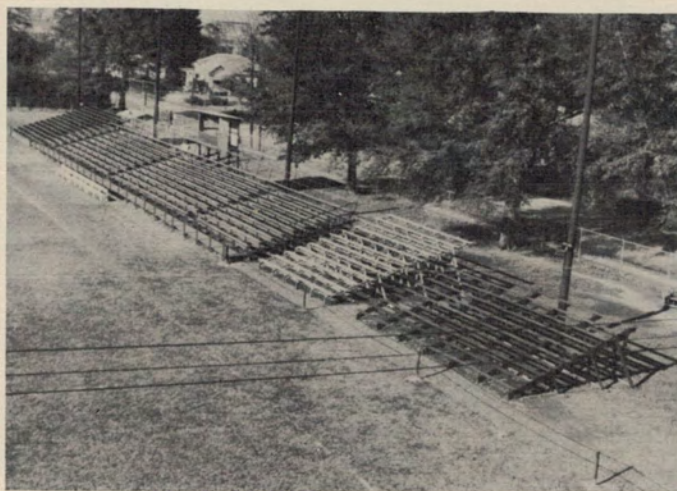


Everybody studies in the Library.



We'll come to that later.

Southwest District  
Championship Stadium.



Recess, at last!





Still Headaches.



The Gang's all here



Beauty, plus!!  
(Picture by  
courtesy of The  
Opelousas Daily  
World)



Steve fixes the election.



"CHRISTMAS CAROL"

Presented by  
The Senior English Class

Cast as Pictured

Mrs. Cratchit - - - - Patsy Brister  
Fred - - - - - Jerry Ryan  
Scrooge - - - - - Gilbert Dopson  
Bob Cratchit - - - - Russell Allor  
Mrs. Dilber - - - - Elaine Barron  
Young Scrooge - - - Burton Newton  
Ghost - - - - - Charles Bordelon  
Tiny Tim - - - - Anthony Palermo  
Fan - - - - - Jackie Lemoine  
Sponsor - - - - - Mrs. Finlay



Pictures Courtesy of  
"OPELUSAS DAILY WORLD."



"CHRISTMAS CAROL"

Presented by  
The Senior English Class

Cast as Pictured

Mrs. Cratchit - - - - Patsy Brister  
Fred - - - - - Jerry Ryan  
Scrooge - - - - - Gilbert Dopson  
Bob Cratchit - - - - Russell Allor  
Mrs. Dilber - - - - Elaine Barron  
Young Scrooge - - - Burton Newton  
Ghost - - - - - Charles Bordelon  
Tiny Tim - - - - Anthony Palermo  
Fan - - - - - Jackie Lemoine  
Sponsor - - - - - Mrs. Finlay



Pictures Courtesy of  
"OPELUSAS DAILY WORLD."











# Thirst, Too, Seeks Quality

*Autographs*



Ask for it either way . . . both  
trade-marks mean the same thing.

Bottled Under Authority Of The Coca-Cola Company By  
BUNKIE COCA-COLA BOTTLING COMPANY, INC.  
Bunkie, Louisiana