

Each domain is viewed as a separate entity with related subcomponents.

**Structures,
Systems, and
Resources**



- Power Structures, Policy, and Organizational Systems
- Strategic Planning for Equity
- Equitable Allocation of Resources

**Culture and
Community**



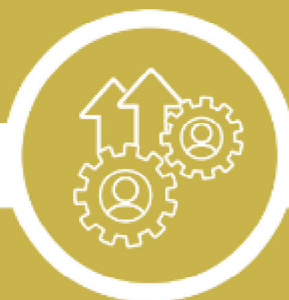
- Anti-Racist Climate and Culture
- Social and Emotional Supports for Well-Being and Safety
- Community Engagement and Social Trust

**Racial
Equity in the
Educator
Workforce**



- Recruitment
- Placement
- Retention
- Promotion

**Professional
Learning and
Personal Growth**



- Professional Learning Content
- Educator Engagement
- Alignment and Integration

**Curriculum,
Instruction, and
Learning**



- Racially Competent Curriculum
- Instructional Delivery
- Programmatic Access and Equity