

LEA Name : New Brighton Area SD  
Address : 3225 43rd St  
New Brighton , PA 15066

County : Beaver  
AUN Number : 127045653  
LEA Type : SD

## Annual Financial Report Accuracy Certification Statement

For Fiscal Year Ending

6/30/2020

Pennsylvania Department of Education  
&

Office of Comptroller Operations

PDE-2056: Intermediate Unit

PDE-2057: School District, AVTS/CTC, Charter School,  
and Special Program Jointure

**CERTIFICATION:** By signing this page I agree that the electronic data submitted is a complete and accurate statement of the financial operations and status of the local education agency for the fiscal year. It has been prepared in accordance with generally accepted accounting principles and established Commonwealth of PA reporting guidelines.

  
Chief School Administrator Signature

Date

11-30-20

  
Board Secretary Signature

Date

11-30-20

Marydenise Feroce

(724)843-1795 Ext :404

Contact Person

Contact Person Telephone Number

mferoce@nbasd.org

(724)843-6144

Contact Person E-mail Address

Contact Person Fax Number

# Audit Certification

## Annual Financial Report:

For Fiscal Year Ending 6/30/2020

(Pursuant to PA School Code Section 218(b))

LEA Name : New Brighton Area SD  
AUN Number : 127045653  
County : Beaver

Audit Certification Due:  
12/31/2020

This certification is applicable to the Annual Financial Report data submitted through the Consolidated Financial Reporting System (CFRS).

CERTIFICATION: By signing this page I agree that the financial statements of the school have been properly audited as noted above pursuant to Article XXIV, and in the auditor's professional opinion, the Annual Financial Report (PDE-2057) submitted through CFRS is materially consistent with the audited financial statements.

Chief School Administrator

  
Signature

11-30-20  
Date

Board Secretary

  
Signature

11-30-20  
Date

Marydenise Feroce

Contact Person

mferoce@nbasd.org

Contact Person E-mail Address

(724)843-1795

Contact Person Telephone Number

(724)843-6144

Contact Person Fax Number

Ext :404

# NEW BRIGHTON AREA SCHOOL DISTRICT

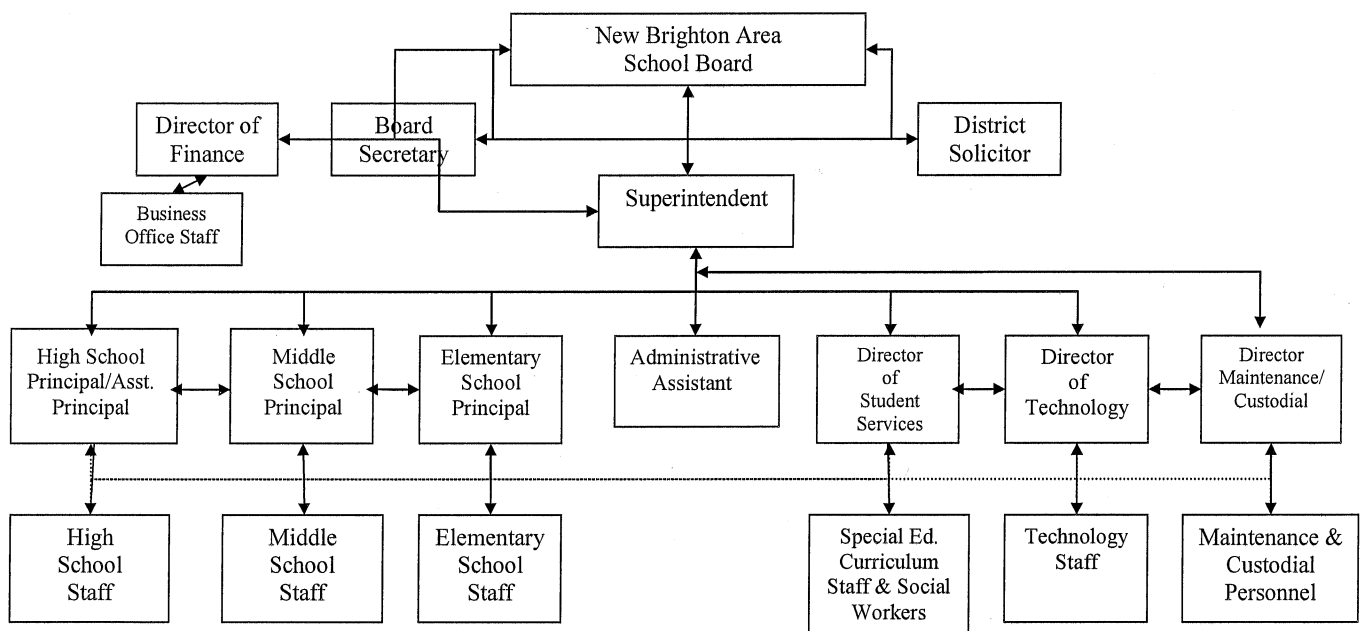
No. 008

SECTION: LOCAL BOARD PROCEDURES

TITLE: ORGANIZATIONAL CHART

ADOPTED: June 21, 1993

REVISED: October 28, 2013



# NEW BRIGHTON

## AREA SCHOOL DISTRICT

Book	Policy Manual
Section	600 Finances
Title	Capital Assets
Code	622
Status	Active
Adopted	September 15, 2003
Last Revised	May 11, 2009

### **Purpose**

The Board recognizes the need to implement the required accounting and financial reporting standards stipulated by the Pennsylvania Department of Education.

The primary objectives of implementing the GASB Statement 34 are to assure compliance with state requirements, and properly account for both the financial and economic resources of the district.

The policy applies to the district's acquisition and depreciation of capital assets.

### **Definition**

**Capital assets** include land, improvements to land, easements, buildings and building additions, building improvements, furniture, fixtures and equipment, equipment under lease, vehicles, works of art and historical treasures, construction-in-progress, and infrastructure. Capital assets are tangible assets used in operations and have initial useful lives extending beyond a single reporting period. Equipment will not change its original shape, appearance or character with use and it can be expected to last more than one (1) year with reasonable care and maintenance.

### **Authority**

Participation of the school entity in any such activity shall be in accordance with Board policy.[\[1\]](#)

### **Delegation of Responsibility**

The Board delegates to the Business Manager, the responsibility to coordinate the compilation and preparation of all information necessary to implement this policy. The Business Manager shall be responsible for implementation of the necessary procedures to establish and maintain a capital asset inventory, including depreciation schedules.

### **Guidelines**

#### **Capital Asset Addition Overview**

Purchased capital assets greater than \$1,500 should be recorded at historical/original cost. The cost of a capital asset should include capitalized interest and ancillary charges necessary to place the asset into its intended location and condition for use. Ancillary charges include costs that are directly attributable to asset acquisition – such as freight and transportation charges, site preparation costs, and professional fees.

Purchases less than \$1,500, but that have lives that extend beyond one (1) year and need to be controlled for insurance purposes, should be classified as noncapital equipment expenditures, and coded to the object specified by the Pennsylvania Public School Accounting Manual. Purchases less than \$1,500 and that are consumed within the fiscal year, are treated as supplies and coded to the supply objects prescribed by the Pennsylvania Public School Accounting Manual.

Group purchases of assets greater than \$1,500 should be recorded at historical cost. Group assets are assigned to a specific location, are movable property requiring loss control, and have a useful life extending beyond a single reporting period. Group assets include classroom furniture, classroom texts, library books, musical instruments, computer equipment, and band uniforms. Group purchases less than \$1,500 are not capitalized.

Capital assets should be depreciated over their useful lives as determined for each asset class. Land and some land improvements are considered inexhaustible, and are therefore not subject to depreciation.

If determining historical costs is not practical due to inadequate records, reporting should be based on estimates of original cost at the date of construction or purchase.

Depending upon the information available and the category of the asset, fixed asset records should include all or part of the following:

1. Asset tag number.
2. Description.
3. Asset class.
4. Serial number.
5. Cost.
6. Location or functional area.
7. Acquisition date.
8. Estimated useful life.
9. Depreciation method.
10. Salvage value.
11. Accumulated depreciation.
12. Depreciation expense.
13. Replacement cost.

### Donations

Donated capital assets must be reported at fair market value plus ancillary charges, if any, at the time of donation. Donated assets are depreciated over their useful lives as determined for each asset class. If determining historical costs is not practical due to inadequate records, reporting should be based on estimates of fair market value at the date of donation.

### Collections

Works of art, historical treasures and similar assets should be capitalized at their historical cost or fair value at date of donation (estimated if necessary) whether they are held as individual items or in

a collection.

Capitalized collections or individual items that are exhaustible should be depreciated over their useful lives. Depreciation is not required for collections or individual items that are inexhaustible.

### Infrastructure

Infrastructure assets are long lived capital assets that normally are stationary in nature and can normally be preserved for a significantly greater number of years than most capital assets. Infrastructure includes roads, electrical distribution systems, street lighting, water wells, etc.

Infrastructure assets should be depreciated over the useful lives.

Routine repairs and maintenance costs are charged to operations as incurred. Expenditures that extend the useful life of the infrastructure are capitalized as part of the asset and depreciated over the newly established useful life.

### Useful Lives

Useful lives of fixed assets relate to the life expectancy as used by the specific governmental unit. The following table should be used to assist the district in estimating the useful life of a capital asset.

<b>Asset Class</b>	<b>Example</b>	<b>Years/Range</b>
Land		N/A
Site Improvements	Paving, flagpoles, retaining walls, sidewalks, fencing, outdoor lighting	15-20
School Buildings		40-50
HVAC Systems	Heating, ventilation and air conditioning systems	20-25
Roofing		20-25
Interior Construction		25-30
Carpet Replacement		5-7
Electrical/Plumbing		25-30
Sprinkler/Fire System		20-25
Outdoor Equipment	Playground, radio towers, fuel tanks, pumps	15-20
Machinery & Tools	Shop & maintenance equipment, tools	10-15
Kitchen Equipment	Appliances	10-15
Custodial Equipment	Floor scrubbers, vacuums, other	5-10
Furniture & Accessories	Classroom and office furniture	15-20
Business Machines	Fax, duplicating & printing equipment	5-10
Communication Equipment	Mobile, portable radios, noncomputerized	5-10
Computer Hardware	PC's, printers, network hardware	3-5
Computer Software	Instructional, other short-term	3-10
Computer Software	Administrative or long-term	3-10
Audiovisual Equipment	Projectors, cameras (still & digital)	5-10
Musical Instruments	Pianos, string, brass, percussion	8-15
Library Books	Collections	5-7
Licensed Vehicles	Buses, other on-road vehicles	8-10
Grounds Equipment	Mowers, tractors, attachments	5-15
Source: ASBO		

### Depreciation

Depreciation is required for the district's capital assets. Depreciation is allocated to expense in a systematic and rational manner. Depreciation is calculated using the Straight Line method and reported by area of activity (function). The district calculates depreciation on all capital assets

reported in the district financial statements other than land, permanent improvements to land, and construction in progress.

Depreciation may be calculated for a class of assets, a network of assets or individual assets.

### Disposals

#### *Sale of Fixed Assets –*

When fixed assets are sold, calculation of gain or loss on disposal is required. The calculation is based upon the amount of proceeds received less the net book value (cost less accumulated depreciation taken on the asset).

#### *Trade-Ins –*

The value given for a trade is part of the cost of the newly acquired asset. The costs and accumulated depreciation of the traded-in asset must be removed from the books. Any gain or loss resulting from the disposition of the asset will be recognized as a gain or loss on disposal.

### Assets Acquired by Capital Lease

Assets acquired by capital lease are recorded at the net present value of the future minimum lease payments. A corresponding liability is established at this time. Assets acquired under the terms of capital leases are depreciated over the useful lives designated for the asset class.

Legal

1. 24 P.S. 218

24 P.S. 613

Governmental Accounting Standards Board, Statement No. 34

<u>Val Number</u>	<u>Description</u>	<u>Justification</u>
40970	There are no expenditures reported in 10-1200-322 representing special programs costs for IU professional educational services. All SDs are expected to report expenditures within this function. Please provide an explanation.	The District relies on the services of AOT, Inc. and onsite specialist. There were no other instructional services for which the IU was utilized
41100	Expenditure Detail - There is an entry in function 5110- 990 object "Other". Please explain what constitutes "Other".  Expenditure 5110-990, Fund 32: \$615.00	CD Fees
50260	SOIN: No ending long term liability has been reported for Governmental Fund - Compensated Absences. Correct data or verify that the LEA does not offer any type of Compensated Absences for employees.	District does not offer Compensated Absences



LEA : 127045653      New Brighton Area SD

Printed 12/1/2020 10:02:56 AM

Amounts Expressed in Whole Dollars		<u>General Fund</u> <u>(10)</u>	<u>Student Sponsored</u> <u>Activity Fund</u> <u>(21)</u>	<u>Public Purpose Trust</u> <u>(27)</u>	<u>Other Compt Approved</u> <u>(28)</u>	<u>Athletic / Activity</u> <u>(29)</u>
<b>Assets And Deferred Outflows Of Resources</b>						
<b>Assets</b>						
0100	Cash and Cash Equivalents	757,090				
0110	Investments	6,539,105				
0120	Taxes Receivable	1,219,833				
0130	Due From Other Funds					
0141	Due From Other Governments	2,058,842				
0142	State Revenue Receivable					
0143	Federal Revenue Receivable					
0145	Other Intergovernmental Revenue Receivable					
0146	Due from Primary Government					
0147	Due from Component Unit					
0150	Other Receivables	88,209				
0170	Inventories					
0180	Prepaid Expenses (Expenditures)	246,828				
0190	Other Current Assets					
<b>Total Assets</b>		<b>\$10,909,907</b>				
0910	Deferred Outflows of Resources					
<b>Total Assets And Deferred Outflows Of Resources</b>		<b>\$10,909,907</b>				

LEA : 127045653      New Brighton Area SD

Printed 12/1/2020 10:02:56 AM

Amounts Expressed in Whole Dollars		<u>Capital Reserve (690.</u> <u>1850)</u> <u>(31)</u>	<u>Capital Reserve (1431)</u> <u>(32)</u>	<u>Other Capital Projects</u> <u>Fund</u> <u>(39)</u>	<u>Debt Service</u> <u>(40)</u>	<u>Permanent</u> <u>(90)</u>
<b>Assets And Deferred Outflows Of Resources</b>						
<b>Assets</b>						
0100	Cash and Cash Equivalents					
0110	Investments		469,144	89,399		
0120	Taxes Receivable					
0130	Due From Other Funds		862,396	260		
0141	Due From Other Governments					
0142	State Revenue Receivable					
0143	Federal Revenue Receivable					
0145	Other Intergovernmental Revenue Receivable					
0146	Due from Primary Government					
0147	Due from Component Unit					
0150	Other Receivables					
0170	Inventories					
0180	Prepaid Expenses (Expenditures)					
0190	Other Current Assets					
<b>Total Assets</b>			<b>\$1,331,540</b>	<b>\$89,659</b>		
0910	Deferred Outflows of Resources					
<b>Total Assets And Deferred Outflows Of Resources</b>			<b>\$1,331,540</b>	<b>\$89,659</b>		

LEA : 127045653      New Brighton Area SD

Printed 12/1/2020 10:02:56 AM

Amounts Expressed in Whole Dollars		<u>Total Governmental</u> <u>Funds</u>
<b>Assets And Deferred Outflows Of Resources</b>		
<b>Assets</b>		
0100 Cash and Cash Equivalents		757,090
0110 Investments		7,097,648
0120 Taxes Receivable		1,219,833
0130 Due From Other Funds		862,656
0141 Due From Other Governments		2,058,842
0142 State Revenue Receivable		
0143 Federal Revenue Receivable		
0145 Other Intergovernmental Revenue Receivable		
0146 Due from Primary Government		
0147 Due from Component Unit		
0150 Other Receivables		88,209
0170 Inventories		
0180 Prepaid Expenses (Expenditures)		246,828
0190 Other Current Assets		
<b>Total Assets</b>		<b>\$12,331,106</b>
0910 Deferred Outflows of Resources		
<b>Total Assets And Deferred Outflows Of Resources</b>		<b>\$12,331,106</b>

LEA : 127045653      New Brighton Area SD

Printed 12/1/2020 10:02:56 AM

Amounts Expressed in Whole Dollars		<u>General Fund</u> <u>(10)</u>	<u>Student Sponsored</u> <u>Activity Fund</u> <u>(21)</u>	<u>Public Purpose Trust</u> <u>(27)</u>	<u>Other Compt Approved</u> <u>(28)</u>	<u>Athletic / Activity</u> <u>(29)</u>
<b>Liabilities And Deferred Inflows Of Resources And Fund Balances</b>						
<b>Liabilities</b>						
0400	Due to Other Funds	1,067,384				
0411	Due to Other Governments	142,668				
0412	Due to Primary Government					
0413	Due to Component Unit					
0420	Accounts Payable	562,640				
0430	Contracts Payable					
0440	Current Portion of Long-Term Debt					
0450	Short-Term Payables					
0461	Accrued Salaries and Benefits	2,699,681				
0462	Payroll Deductions and Withholding	210,810				
0480	Unearned Revenues	8,835				
0490	Other Current Liabilities					
<b>Total Liabilities</b>		<b>\$4,692,018</b>				
0950	Deferred Inflows of Resources	877,649				
<b>Fund Balances</b>						
0810	Nonspendable Fund Balance	246,828				
0820	Restricted Fund Balance					
0830	Committed Fund Balance	250,000				
0840	Assigned Fund Balance	2,204,544				
0850	Unassigned Fund Balance	2,638,868				
<b>Total Fund Balances</b>		<b>\$5,340,240</b>				
<b>Total Liabilities, Deferred Inflows Of Resources And Fund Balances</b>		<b>\$10,909,907</b>				

LEA : 127045653      New Brighton Area SD

Printed 12/1/2020 10:02:56 AM

Amounts Expressed in Whole Dollars		<u>Capital Reserve (690.</u> <u>1850)</u> <u>(31)</u>	<u>Capital Reserve (1431)</u> <u>(32)</u>	<u>Other Capital Projects</u> <u>Fund</u> <u>(39)</u>	<u>Debt Service</u> <u>(40)</u>	<u>Permanent</u> <u>(90)</u>
<b>Liabilities And Deferred Inflows Of Resources And Fund Balances</b>						
<b>Liabilities</b>						
0400	Due to Other Funds					
0411	Due to Other Governments					
0412	Due to Primary Government					
0413	Due to Component Unit					
0420	Accounts Payable					
0430	Contracts Payable					
0440	Current Portion of Long-Term Debt					
0450	Short-Term Payables					
0461	Accrued Salaries and Benefits					
0462	Payroll Deductions and Withholding					
0480	Unearned Revenues					
0490	Other Current Liabilities					
<b>Total Liabilities</b>						
0950	Deferred Inflows of Resources					
<b>Fund Balances</b>						
0810	Nonspendable Fund Balance					
0820	Restricted Fund Balance		1,331,540			
0830	Committed Fund Balance					
0840	Assigned Fund Balance			89,659		
0850	Unassigned Fund Balance					
<b>Total Fund Balances</b>			<b>\$1,331,540</b>	<b>\$89,659</b>		
<b>Total Liabilities, Deferred Inflows Of Resources And Fund Balances</b>			<b>\$1,331,540</b>	<b>\$89,659</b>		

Amounts Expressed in Whole Dollars		<u>Total Governmental Funds</u>
<b>Liabilities And Deferred Inflows Of Resources And Fund Balances</b>		
<b>Liabilities</b>		
0400 Due to Other Funds		1,067,384
0411 Due to Other Governments		142,668
0412 Due to Primary Government		
0413 Due to Component Unit		
0420 Accounts Payable		562,640
0430 Contracts Payable		
0440 Current Portion of Long-Term Debt		
0450 Short-Term Payables		
0461 Accrued Salaries and Benefits		2,699,681
0462 Payroll Deductions and Withholding		210,810
0480 Unearned Revenues		8,835
0490 Other Current Liabilities		
<b>Total Liabilities</b>		<b>\$4,692,018</b>
0950 Deferred Inflows of Resources		877,649
<b>Fund Balances</b>		
0810 Nonspendable Fund Balance		246,828
0820 Restricted Fund Balance		1,331,540
0830 Committed Fund Balance		250,000
0840 Assigned Fund Balance		2,294,203
0850 Unassigned Fund Balance		2,638,868
<b>Total Fund Balances</b>		<b>\$6,761,439</b>
<b>Total Liabilities, Deferred Inflows Of Resources And Fund Balances</b>		<b>\$12,331,106</b>

Amounts Expressed in Whole Dollars	<u>General Fund</u> <u>(10)</u>	<u>Student Sponsored</u> <u>Activity Fund</u> <u>(21)</u>	<u>Public Purpose Trust</u> <u>(27)</u>	<u>Other Compt Approved</u> <u>(28)</u>	<u>Athletic / Activity</u> <u>(29)</u>
<b>Revenues</b>					
6000 Revenue from Local Sources	7,583,707				
7000 Revenue from State Sources	17,237,306				
8000 Revenue from Federal Sources	861,778				
<b>Total Revenues</b>	<b>\$25,682,791</b>				
<b>Expenditures</b>					
1000 Instruction	15,935,929				
2000 Support Services	7,422,662				
3000 Operation of Non-Instructional Services	674,470				
4000 Facilities Acquisition, Construction and Improvement Services	6,798				
5110 Debt Service	1,706,921				
5130 Refund of Prior Year Revenues / Receipts					
<b>Total Expenditures</b>	<b>\$25,746,780</b>				
<b>Excess (Deficiency) Of Revenues Over Expenditures</b>	<b>(\$63,989)</b>				
<b>Other Financing Sources (Uses)</b>					
9110 Face Value of Bonds Issued					
9120 Proceeds from Refunding of Bonds					
9130 Bond Premiums					
9200 Proceeds from Extended-Term Financing					
9300 Interfund Transfers - IN					
9400 Sale of or Compensation for Loss of Fixed Assets					
9710 Transfers from Component Units					
9720 Transfers from Primary Governments					
9910 Other Financing Sources Not Listed in the 9000 Series					
9990 Insurance Recoveries					
5120 Debt Service – Refunded Bonds					
5150 Bond Discounts					
5200 Interfund Transfers – Out					
5300 Transfers Out to Component Units/Primary Governments					
<b>Total Other Financing Sources (Uses)</b>					

Amounts Expressed in Whole Dollars	<u>Capital Reserve (690.1850)</u> <u>(31)</u>	<u>Capital Reserve (1431)</u> <u>(32)</u>	<u>Other Capital Projects</u> <u>Fund</u> <u>(39)</u>	<u>Debt Service</u> <u>(40)</u>	<u>Permanent</u> <u>(90)</u>
<b>Revenues</b>					
6000 Revenue from Local Sources		4,234	2,831		
7000 Revenue from State Sources					
8000 Revenue from Federal Sources					
<b>Total Revenues</b>		<b>\$4,234</b>	<b>\$2,831</b>		
<b>Expenditures</b>					
1000 Instruction					
2000 Support Services					
3000 Operation of Non-Instructional Services					
4000 Facilities Acquisition, Construction and Improvement Services			120,639		
5110 Debt Service		615			
5130 Refund of Prior Year Revenues / Receipts					
<b>Total Expenditures</b>		<b>\$615</b>	<b>\$120,639</b>		
<b>Excess (Deficiency) Of Revenues Over Expenditures</b>		<b>\$3,619</b>	<b>(\$117,808)</b>		
<b>Other Financing Sources (Uses)</b>					
9110 Face Value of Bonds Issued					
9120 Proceeds from Refunding of Bonds					
9130 Bond Premiums					
9200 Proceeds from Extended-Term Financing					
9300 Interfund Transfers - IN					
9400 Sale of or Compensation for Loss of Fixed Assets					
9710 Transfers from Component Units					
9720 Transfers from Primary Governments					
9910 Other Financing Sources Not Listed in the 9000 Series					
9990 Insurance Recoveries					
5120 Debt Service – Refunded Bonds					
5150 Bond Discounts					
5200 Interfund Transfers – Out					
5300 Transfers Out to Component Units/Primary Governments					
<b>Total Other Financing Sources (Uses)</b>					



Amounts Expressed in Whole Dollars		<u>Total Governmental Funds</u>
<b>Revenues</b>		
6000	Revenue from Local Sources	7,590,772
7000	Revenue from State Sources	17,237,306
8000	Revenue from Federal Sources	861,778
<b>Total Revenues</b>		<b>\$25,689,856</b>
<b>Expenditures</b>		
1000	Instruction	15,935,929
2000	Support Services	7,422,662
3000	Operation of Non-Instructional Services	674,470
4000	Facilities Acquisition, Construction and Improvement Services	127,437
5110	Debt Service	1,707,536
5130	Refund of Prior Year Revenues / Receipts	
<b>Total Expenditures</b>		<b>\$25,868,034</b>
<b>Excess (Deficiency) Of Revenues Over Expenditures</b>		<b>(\$178,178)</b>
<b>Other Financing Sources (Uses)</b>		
9110	Face Value of Bonds Issued	
9120	Proceeds from Refunding of Bonds	
9130	Bond Premiums	
9200	Proceeds from Extended-Term Financing	
9300	Interfund Transfers - IN	
9400	Sale of or Compensation for Loss of Fixed Assets	
9710	Transfers from Component Units	
9720	Transfers from Primary Governments	
9910	Other Financing Sources Not Listed in the 9000 Series	
9990	Insurance Recoveries	
5120	Debt Service – Refunded Bonds	
5150	Bond Discounts	
5200	Interfund Transfers – Out	
5300	Transfers Out to Component Units/Primary Governments	
<b>Total Other Financing Sources (Uses)</b>		

Amounts Expressed in Whole Dollars		<u>General Fund</u> <u>(10)</u>	<u>Student Sponsored</u> <u>Activity Fund</u> <u>(21)</u>	<u>Public Purpose Trust</u> <u>(27)</u>	<u>Other Compt Approved</u> <u>(28)</u>	<u>Athletic / Activity</u> <u>(29)</u>
<b>Special And Extraordinary Items</b>						
9920	Special Items – Gains					
9930	Extraordinary Items – Gains					
5520	Special Items – Losses					
5530	Extraordinary Items – Losses					
<b>Net Change In Fund Balances</b>		<b>(\$63,989)</b>				
<b>Fund Balance</b>						
0001	Fund Balance - Beginning of Fiscal Year	5,404,228				
<b>Fund Balance - End Of Year</b>		<b>\$5,340,239</b>				

Amounts Expressed in Whole Dollars		<u>Capital Reserve (690.</u> <u>1850)</u> <u>(31)</u>	<u>Capital Reserve (1431)</u> <u>(32)</u>	<u>Other Capital Projects</u> <u>Fund</u> <u>(39)</u>	<u>Debt Service</u> <u>(40)</u>	<u>Permanent</u> <u>(90)</u>
<b>Special And Extraordinary Items</b>						
9920	Special Items – Gains					
9930	Extraordinary Items – Gains					
5520	Special Items – Losses					
5530	Extraordinary Items – Losses					
<b>Net Change In Fund Balances</b>			<b>\$3,619</b>	<b>(\$117,808)</b>		
<b>Fund Balance</b>						
0001	Fund Balance - Beginning of Fiscal Year		1,327,921	207,467		
<b>Fund Balance - End Of Year</b>			<b>\$1,331,540</b>	<b>\$89,659</b>		

Amounts Expressed in Whole Dollars		<u>Total Governmental Funds</u>
<b>Special And Extraordinary Items</b>		
9920	Special Items – Gains	
9930	Extraordinary Items – Gains	
5520	Special Items – Losses	
5530	Extraordinary Items – Losses	
<b>Net Change In Fund Balances</b>		<b>(\$178,178)</b>
<b>Fund Balance</b>		
0001	Fund Balance - Beginning of Fiscal Year	6,939,616
<b>Fund Balance - End Of Year</b>		<b>\$6,761,438</b>

LEA : 127045653      New Brighton Area SD

Printed 12/1/2020 10:03:06 AM

Amounts Expressed in Whole Dollars	<u>Food Service</u> (51)	<u>Child Care</u> <u>Operations</u> (52)	<u>Other Enterprise</u> (58)	<u>TOTAL</u>	<u>Internal Service</u> (60)
<b>Assets And Deferred Outflows Of Resources</b>					
<b>Current Assets</b>					
0100 Cash and Cash Equivalents	12,143			12,143	
0110 Investments					
0130 Due From Other Funds	204,728			204,728	
0141 Due From Other Governments	37,740			37,740	
0142 State Revenue Receivable					
0143 Federal Revenue Receivable					
0146 Due from Primary Government					
0147 Due from Component Unit					
0150 Other Receivables	71,057			71,057	
0170 Inventories	6,539			6,539	
0180 Prepaid Expenses (Expenditures)					
0190 Other Current Assets					
<b>Total Current Assets</b>	<b>\$332,207</b>			<b>\$332,207</b>	
<b>Noncurrent Assets</b>					
0211 Land					
0212 Site Improvements (Net)					
0220 Buildings and Building Improvements (Net)					
0230 Machinery, Equipment and Furniture (Net)	132,546			132,546	
0250 Construction in Progress					
0260 Long Term Prepayments					
0290 Other Noncurrent Assets					
<b>Total Noncurrent Assets</b>	<b>\$132,546</b>			<b>\$132,546</b>	
0910 Deferred Outflows of Resources					
<b>Total Assets And Deferred Outflows Of Resources</b>	<b>\$464,753</b>			<b>\$464,753</b>	

LEA : 127045653      New Brighton Area SD

Printed 12/1/2020 10:03:06 AM

Amounts Expressed in Whole Dollars	Food Service (51)	Child Care Operations (52)	Other Enterprise (58)	TOTAL	Internal Service (60)
<b>Liabilities And Deferred Inflows Of Resources And Net Position</b>					
<b>Current Liabilities</b>					
0400 Due to Other Funds					
0411 Due to Other Governments					
0413 Due to Component Unit					
0420 Accounts Payable	24,250			24,250	
0430 Contracts Payable					
0440 Current Portion of Long-Term Debt					
0450 Short-Term Payables					
0461 Accrued Salaries and Benefits					
0462 Payroll Deductions and Withholding					
0480 Unearned Revenues	3,339			3,339	
0490 Other Current Liabilities					
<b>Total Current Liabilities</b>	<b>\$27,589</b>			<b>\$27,589</b>	
<b>Noncurrent Liabilities</b>					
0510 Bonds Payable					
0520 Extended-Term Financing Agreements Payable					
0530 Lease-Purchase Obligations					
0540 Accumulated Compensated Absences					
0550 Authority Lease Obligations					
0560 Other Post-Employment Benefits (OPEB)					
0570 Net Pension Liability					
0599 Other Noncurrent Liabilities					
<b>Total Noncurrent Liabilities</b>					
<b>Total Liabilities</b>	<b>\$27,589</b>			<b>\$27,589</b>	
0950 Deferred Inflows of Resources					
<b>Net Position</b>					
0791 Net Investment in Capital Assets	132,546			132,546	
0008 Restricted Net Position (0792 – 0798)					
0799 Unrestricted Net Position	304,618			304,618	
<b>Total Net Position</b>	<b>\$437,164</b>			<b>\$437,164</b>	
<b>Total Liabilities And Deferred Inflows Of Resources And Net Position</b>	<b>\$464,753</b>			<b>\$464,753</b>	

Amounts Expressed in Whole Dollars	Food Service (51)	Child Care Operations (52)	Other Enterprise (58)	TOTAL	Internal Service (60)
Operating Revenues					
6600 Food Service Revenue	235,285			235,285	
0071 Charges for Services					
0072 Other Operating Revenue					
Total Operating Revenues	\$235,285			\$235,285	
Operating Expenses					
100 Personnel Services – Salaries					
200 Personnel Services – Employee Benefits					
300 Purchased Professional and Technical Services					
400 Purchased Property Services					
500 Other Purchased Services	836,848			836,848	
600 Supplies	91,115			91,115	
740 Depreciation	7,816			7,816	
810 Dues and Fees					
890 Miscellaneous Expenditures	296			296	
Total Operating Expenses	\$936,075			\$936,075	
Operating Income (Loss)	(\$700,790)			(\$700,790)	
Non Operating Revenues (Expenses)					
6500 Earnings on Investments					
6920 Contributions and Donations from Private Sources					
6930 Gains or Losses on Sale of Fixed Assets	(522)			(522)	
6991 Refunds of a Prior Year Expenditure					
7000 Revenue from State Sources	51,386			51,386	
8000 Revenue from Federal Sources	740,386			740,386	
9990 Insurance Recoveries					
820 Claims and Judgments Against the LEA					
830 Interest					
TOTAL Non Operating Revenues (Expenses)	\$791,250			\$791,250	
Income (Loss) Before Contributions And Transfers	\$90,460			\$90,460	

Amounts Expressed in Whole Dollars	<u>Food Service</u> <u>(51)</u>	<u>Child Care Operations</u> <u>(52)</u>	<u>Other Enterprise</u> <u>(58)</u>	<u>TOTAL</u>	<u>Internal Service</u> <u>(60)</u>
<b>Contributions, Transfers, and Special and Extraordinary Items</b>					
5200 Interfund Transfers – Out					
5300 Transfers Out to Component Units/Primary Governments					
5520 Special Items – Losses					
5530 Extraordinary Items – Losses					
9300 Interfund Transfers - IN					
9500 Capital Contributions					
9700 Transfers IN From Component Units/Primary Governments					
9920 Special Items – Gains					
9930 Extraordinary Items – Gains					
<b>Change In Net Position</b>	<b>\$90,460</b>			<b>\$90,460</b>	
0002 Net Position - Beginning of Fiscal Year	346,704			346,704	
0003 Accounting Changes / Residual Equity Transfers					
<b>Net Position - End Of Year</b>	<b>\$437,164</b>			<b>\$437,164</b>	



LEA : 127045653      New Brighton Area SD

Printed 12/1/2020 10:03:19 AM

Amounts Expressed in Whole Dollars	Food Service (51)	Child Care Operations (52)	Other Enterprise (58)	TOTAL	Internal Service(60)
<b>Cash Flows From Operating Activities</b>					
0011 Cash Receipts From Users	185,066			185,066	
0012 Cash Receipts From Assessments Made to Other Funds					
0013 Cash Receipts From Earnings on Investments					
0014 Cash Receipts From Other Operating Revenue					
0015 Cash Payments To Employees For Services					
0016 Cash Payments For Insurance Claims					
0017 Cash Payments To Suppliers For Goods and Services	965,257			965,257	
0018 Cash Payments For Other Operating Expenses					
<b>Net Cash Provided By (Used For) Operating Activities</b>	<b>(\$780,191)</b>			<b>(\$780,191)</b>	
<b>Cash Flows From Non-Capital Financing Activities</b>					
0021 Receipts From Local Sources - 6000					
0022 Receipts From State Sources - 7000	54,417			54,417	
0023 Receipts From Federal Sources -8000	731,899			731,899	
0024 Notes and Loans Received (Repaid)					
0025 Interest Paid on Notes/Loans - 5100-830					
0026 Operating Transfers In (Out)/Residual Equity Trans					
0027 Operating Transfers In (Out) Primary Government / Comp Unit					
0028 Receipts From Refund of Prior Year Expenditures - 6991					
0029 Special and Extraordinary Gains (losses)					
0030 Receipts from Insurance Recoveries -9990					
<b>Net Cash Prov By (Used for) Non-Capital Financing Activities</b>	<b>\$786,316</b>			<b>\$786,316</b>	
<b>Cash Flows From Capital and Related Financing Activities</b>					
0031 Payments For Fac Acq, Const, and Imp - 4000	(110,849)			(110,849)	
0032 Gain / (Loss) on Sale of Fixed Assets - 6930					
0033 Proceeds From Extended Term Financing - 9200					
0034 Principal Paid on Financing Agreements					
0035 Interest Paid on Financing Agreements - 5100-830					
0036 (Inc) Dec in Contributed Capital					
<b>Net Cash Prov By (Used for) Capital and Related Financing Activities</b>	<b>(\$110,849)</b>			<b>(\$110,849)</b>	
<b>Cash Flows From Investing Activities</b>					
0041 Earnings on Investments - 6500					
0042 Purchase of Inv Securities / Deposits to Inv Pools					
0043 Receipts From Investment Pool Withdrawals					
0044 Proceeds from Sale and Maturity of Inv Securities					

LEA : 127045653      New Brighton Area SD

Printed 12/1/2020 10:03:19 AM

0045   Loans Received (Paid)

**Net Cash Prov By (Used for) Investing Activities**

LEA : 127045653      New Brighton Area SD

Printed 12/1/2020 10:03:19 AM

	Food Service (51)	Child Care Operations (52)	Other Enterprise (58)	TOTAL	Internal Service (60)
Net Increase (Decrease) in Cash Flows	(104,724)			(104,724)	
0004 Cash and Cash Equivalents Beginning of Year	116,867			116,867	
Cash and Cash Equivalents at Year End	\$12,143			\$12,143	
Reconciliation of Operating Income (Loss) To Net Cash Provided by (Used For) Operating Activities					
0005 Operating Income (Loss) per REP	(700,790)			(700,790)	
Adjustments					
0051 Depreciation and Net Amortization	7,816			7,816	
0052 Provision for Uncollectible Accounts					
0053 Other Adjustments	63,328			63,328	
Effect of Changes in Assets, Liabilities, Deferred Outflows and Deferred Inflows					
0054 (Inc) Dec In Accounts Receivable (0120-0150)	(51,039)			(51,039)	
0055 Advances to Other Funds (0160)	(98,151)			(98,151)	
0056 (Inc) Dec in Inventories (0170)	3,926			3,926	
0057 (Inc) Dec in Prepaid Expenses (0180)					
0058 (Inc) Dec in Other Current or Noncurrent Assets					
0064 Deferred Outflows (0910)					
0059 Inc (Dec) in Accounts Payable (0400-0450)	(6,101)			(6,101)	
0060 Inc (Dec) in Accrued Salaries/Benefits (0461)					
0065 Inc (Dec) in Net Pension Liabilities (0570)					
0066 Inc (Dec) in Other Postemp Benefit Oblig (0560)					
0061 Inc (Dec) in Payroll Deductions/Withholding (0462)					
0062 Inc (Dec) in Unearned Revenue (0480)	820			820	
0063 Inc (Dec) in Other Current or Noncurrent Liabilities					
0067 Deferred Inflows (0950)					
Total Adjustments	(\$79,401)			(\$79,401)	
Cash Provided By (Used for) Total	(\$780,191)			(\$780,191)	

COMBINED STATEMENT OF CASH FLOWS  
SCHEDULE OF NONCASH INVESTING, CAPITAL, AND FINANCING ACTIVITIES

Explanation of Transaction and Balance Sheet Effect	Amount
Total	

LEA : 127045653     New Brighton Area SD

Printed 12/1/2020 10:03:22 AM

Amounts Expressed in Whole Dollars		<u>Private Purpose Trust</u> <u>(71)</u>	<u>Investment Trust</u> <u>(72)</u>	<u>Pension Trust</u> <u>(73)</u>	<u>Student Activity Custodial</u> <u>(81)</u>
<b>Assets And Deferred Outflows Of Resources</b>					
<b>Assets</b>					
0100	Cash and Cash Equivalents				83,948
0110	Investments				
0130	Due From Other Funds				
0140	Due from Other Governments, Primary Government and Component Units				
0150	Other Receivables				
0170	Inventories				
0180	Prepaid Expenses (Expenditures)				
0190	Other Current Assets				
0220	Buildings and Building Improvements (Net)				
0230	Machinery, Equipment and Furniture (Net)				
<b>Total Assets</b>					<b>\$83,948</b>
0910	Deferred Outflows of Resources				
<b>Total Assets And Deferred Outflows Of Resources</b>					<b>\$83,948</b>

LEA : 127045653     New Brighton Area SD

Printed 12/1/2020 10:03:22 AM

Amounts Expressed in Whole Dollars		<u>Other Custodial</u> <u>(89)</u>	<u>Fiduciary Component Units</u> <u>(98)</u>	<u>Total Fiduciary Funds</u>
<b>Assets And Deferred Outflows Of Resources</b>				
<b>Assets</b>				
0100	Cash and Cash Equivalents			83,948
0110	Investments			
0130	Due From Other Funds			
0140	Due from Other Governments, Primary Government and Component Units			
0150	Other Receivables			
0170	Inventories			
0180	Prepaid Expenses (Expenditures)			
0190	Other Current Assets			
0220	Buildings and Building Improvements (Net)			
0230	Machinery, Equipment and Furniture (Net)			
<b>Total Assets</b>				<b>\$83,948</b>
0910	Deferred Outflows of Resources			
<b>Total Assets And Deferred Outflows Of Resources</b>				<b>\$83,948</b>

LEA : 127045653     New Brighton Area SD

Printed 12/1/2020 10:03:22 AM

Amounts Expressed in Whole Dollars		<u>Private Purpose Trust</u>	<u>Investment Trust</u>	<u>Pension Trust</u>	<u>Student Activity Custodial</u>
		<u>(71)</u>	<u>(72)</u>	<u>(73)</u>	<u>(81)</u>
<b>Liabilities, Deferred Inflows Of Resources And Net Position</b>					
<b>Liabilities</b>					
0400	Due to Other Funds				
0410	Due to Other Governments, Primary Government and Component Units				
0420	Accounts Payable				
0430	Contracts Payable				
0450	Short-Term Payables				
0460	Payroll Accruals and Withholdings				
0480	Unearned Revenues				
0490	Other Current Liabilities				83,948
<b>Total Liabilities</b>					<b>\$83,948</b>
0950	Deferred Inflows of Resources				
<b>Net Position</b>					
0791	Net Investment in Capital Assets				
0009	Restricted Net Position (0792 – 0798)				
0799	Unrestricted Net Position				
<b>Total Net Position</b>					
<b>Total Liabilities, Deferred Inflows Of Resources And Net Position</b>					<b>\$83,948</b>

LEA : 127045653     New Brighton Area SD

Printed 12/1/2020 10:03:22 AM

Amounts Expressed in Whole Dollars		<u>Other Custodial</u>	<u>Fiduciary Component Units</u>	<u>Total Fiduciary Funds</u>
		<u>(89)</u>	<u>(98)</u>	
<b>Liabilities, Deferred Inflows Of Resources And Net Position</b>				
<b>Liabilities</b>				
0400	Due to Other Funds			
0410	Due to Other Governments, Primary Government and Component Units			
0420	Accounts Payable			
0430	Contracts Payable			
0450	Short-Term Payables			
0460	Payroll Accruals and Withholdings			
0480	Unearned Revenues			
0490	Other Current Liabilities			83,948
<b>Total Liabilities</b>				<b>\$83,948</b>
0950	Deferred Inflows of Resources			
<b>Net Position</b>				
0791	Net Investment in Capital Assets			
0009	Restricted Net Position (0792 – 0798)			
0799	Unrestricted Net Position			
<b>Total Net Position</b>				
<b>Total Liabilities, Deferred Inflows Of Resources And Net Position</b>				<b>\$83,948</b>



	Revenue Reported In Current Year	Current Year Tax Accrual	Prior Year Tax Accrual	Taxes Collected In Current Year
<b>Revenue from Local Sources</b>				
6111 Current Real Estate Taxes	5,350,456.96			5,350,456.96
6113 Public Utility Realty Taxes	5,603.12			5,603.12
6114 Payments in Lieu of Current Taxes - State / Local	21,241.08			21,241.08
6120 Current Per Capita Taxes, Section 679	23,573.81			23,573.81
6141 Current Act 511 Per Capita Taxes	23,573.65			23,573.65
6143 Current Act 511 Local Services Taxes	12,358.35			12,358.35
6151 Current Act 511 Earned Income Taxes	1,002,445.06			1,002,445.06
6153 Current Act 511 Real Estate Transfer Taxes	82,737.26			82,737.26
6155 Current Act 511 Business Privilege Taxes	113,535.90			113,535.90
6411 Delinquent Real Estate Taxes	497,955.06			497,955.06
6420 Delinquent Per Capita Taxes, Section 679	19,898.93			19,898.93
6500 Earnings on Investments	86,971.06			
6700 Revenues from LEA Activities	17,808.42			
6829 State Revenue Received from Other Sources	2,258.35			
6832 Federal IDEA Revenue Received as Pass Through	185,102.00			
6941 Regular Day School Tuition	3,000.00			
6942 Summer School Tuition	(1,100.00)			
6980 Revenue from Community Services Activities	52,409.47			
6992 Energy Efficiency Revenues and Incentives	14,290.26			
6999 Other Revenues Not Specified Above	69,588.61			
<b>TOTAL Revenue from Local Sources</b>	<b>\$7,583,707.35</b>			<b>\$7,153,379.18</b>

	Revenue Reported In Current Year			
<b><u>Revenue from State Sources</u></b>				
7111 Basic Education Funding-Formula	10,822,415.53			
7112 Basic Education Funding-Social Security	489,821.48			
7160 Tuition for Orphans Subsidy	46,759.35			
7271 Special Education funds for School-Aged Pupils	1,429,780.07			
7311 Pupil Transportation Subsidy	744,423.20			
7312 Nonpublic and Charter School Pupil Transportation Subsidy	25,025.00			
7330 Health Services (Medical, Dental, Nurse, Act 25)	25,151.45			
7340 State Property Tax Reduction Allocation	671,456.74			
7361 School Safety and Security Grants	130,050.00			
7505 Ready to Learn Block Grant	331,589.00			
7506 PAsmart Grants	29,616.00			
7521 Continuity of Education and Equity Grants	76,650.00			
7820 State Share of Retirement Contributions	2,414,568.24			
<b>TOTAL Revenue from State Sources</b>	<b>\$17,237,306.06</b>			

	Revenue Reported In Current Year			
<b><u>Revenue from Federal Sources</u></b>				
8514 NCLB, Title I - Improving the Academic Achievement of the Disadvantaged	493,085.16			
8515 NCLB, Title II - Preparing, Training and Recruiting High Quality Teachers and Principals	65,342.00			
8517 NCLB, Title IV - 21St Century Schools	32,396.84			
8741 Elementary and Secondary School Emergency Relief Fund (ESSER)	68,432.82			
8810 School-Based Access Medicaid Reimbursement Program (SBAP) Reimbursements (Access)	188,331.86			
8820 Medical Assistance Reimbursement for Administrative Claiming (Quarterly) Program	14,189.65			
<b>TOTAL Revenue from Federal Sources</b>	<b>\$861,778.33</b>			
<b>TOTAL FROM ALL SOURCES</b>	<b>\$25,682,791.74</b>			<b>\$7,153,379.18</b>

LEA : 127045653      New Brighton Area SD

Printed 12/1/2020 10:03:28 AM

	<u>General Fund (10)</u>	<u>Student Sponsored Activity Fund (21)</u>	<u>Public Purpose Trust (27)</u>	<u>Other Compt Approved (28)</u>	<u>Athletic / Activity (29)</u>	<u>Capital Reserve (690, 1850) (31)</u>
<b>6000 Revenue from Local Sources</b>						
6111 Current Real Estate Taxes	5,350,456.96					
6113 Public Utility Realty Taxes	5,603.12					
6114 Payments in Lieu of Current Taxes - State / Local	21,241.08					
6120 Current Per Capita Taxes, Section 679	23,573.81					
6141 Current Act 511 Per Capita Taxes	23,573.65					
6143 Current Act 511 Local Services Taxes	12,358.35					
6151 Current Act 511 Earned Income Taxes	1,002,445.06					
6153 Current Act 511 Real Estate Transfer Taxes	82,737.26					
6155 Current Act 511 Business Privilege Taxes	113,535.90					
6411 Delinquent Real Estate Taxes	497,955.06					
6420 Delinquent Per Capita Taxes, Section 679	19,898.93					
6500 Earnings on Investments	86,971.06					
6700 Revenues from LEA Activities	17,808.42					
6829 State Revenue Received from Other Sources	2,258.35					
6832 Federal IDEA Revenue Received as Pass Through	185,102.00					
6941 Regular Day School Tuition	3,000.00					
6942 Summer School Tuition	(1,100.00)					
6980 Revenue from Community Services Activities	52,409.47					
6992 Energy Efficiency Revenues and Incentives	14,290.26					
6999 Other Revenues Not Specified Above	69,588.61					
<b>6000 Total Revenue from Local Sources</b>	<b>\$7,583,707.35</b>					
<b>7000 Revenue from State Sources</b>						
7111 Basic Education Funding-Formula	10,822,415.53					
7112 Basic Education Funding-Social Security	489,821.48					
7160 Tuition for Orphans Subsidy	46,759.35					
7271 Special Education funds for School-Aged Pupils	1,429,780.07					
7311 Pupil Transportation Subsidy	744,423.20					
7312 Nonpublic and Charter School Pupil Transportation Subsidy	25,025.00					
7330 Health Services (Medical, Dental, Nurse, Act 25)	25,151.45					
7340 State Property Tax Reduction Allocation	671,456.74					
7361 School Safety and Security Grants	130,050.00					
7505 Ready to Learn Block Grant	331,589.00					
7506 PAsmart Grants	29,616.00					
7521 Continuity of Education and Equity Grants	76,650.00					

LEA : 127045653      New Brighton Area SD

Printed 12/1/2020 10:03:28 AM

	Capital Reserve (1431) (32)	Other Capital Projects Fund (39)	Debt Service (40)	Permanent (90)	Total
<b>6000 Revenue from Local Sources</b>					
6111 Current Real Estate Taxes					5,350,456.96
6113 Public Utility Realty Taxes					5,603.12
6114 Payments in Lieu of Current Taxes - State / Local					21,241.08
6120 Current Per Capita Taxes, Section 679					23,573.81
6141 Current Act 511 Per Capita Taxes					23,573.65
6143 Current Act 511 Local Services Taxes					12,358.35
6151 Current Act 511 Earned Income Taxes					1,002,445.06
6153 Current Act 511 Real Estate Transfer Taxes					82,737.26
6155 Current Act 511 Business Privilege Taxes					113,535.90
6411 Delinquent Real Estate Taxes					497,955.06
6420 Delinquent Per Capita Taxes, Section 679					19,898.93
6500 Earnings on Investments	4,234.00	2,831.00			94,036.06
6700 Revenues from LEA Activities					17,808.42
6829 State Revenue Received from Other Sources					2,258.35
6832 Federal IDEA Revenue Received as Pass Through					185,102.00
6941 Regular Day School Tuition					3,000.00
6942 Summer School Tuition					(1,100.00)
6980 Revenue from Community Services Activities					52,409.47
6992 Energy Efficiency Revenues and Incentives					14,290.26
6999 Other Revenues Not Specified Above					69,588.61
<b>6000 Total Revenue from Local Sources</b>	<b>\$4,234.00</b>	<b>\$2,831.00</b>			<b>\$7,590,772.35</b>
<b>7000 Revenue from State Sources</b>					
7111 Basic Education Funding-Formula					10,822,415.53
7112 Basic Education Funding-Social Security					489,821.48
7160 Tuition for Orphans Subsidy					46,759.35
7271 Special Education funds for School-Aged Pupils					1,429,780.07
7311 Pupil Transportation Subsidy					744,423.20
7312 Nonpublic and Charter School Pupil Transportation Subsidy					25,025.00
7330 Health Services (Medical, Dental, Nurse, Act 25)					25,151.45
7340 State Property Tax Reduction Allocation					671,456.74
7361 School Safety and Security Grants					130,050.00
7505 Ready to Learn Block Grant					331,589.00
7506 PAsmart Grants					29,616.00
7521 Continuity of Education and Equity Grants					76,650.00

LEA : 127045653      New Brighton Area SD

Printed 12/1/2020 10:03:28 AM

	<u>General Fund (10)</u>	<u>Student Sponsored Activity Fund (21)</u>	<u>Public Purpose Trust (27)</u>	<u>Other Compt Approved (28)</u>	<u>Athletic / Activity (29)</u>	<u>Capital Reserve (690, 1850) (31)</u>
<b>7000 Revenue from State Sources</b>						
7820 State Share of Retirement Contributions	2,414,568.24					
<b>7000 Total Revenue from State Sources</b>	<b>\$17,237,306.06</b>					
<b>8000 Revenue from Federal Sources</b>						
8514 NCLB, Title I - Improving the Academic Achievement of the Disadvantaged	493,085.16					
8515 NCLB, Title II - Preparing, Training and Recruiting High Quality Teachers and Principals	65,342.00					
8517 NCLB, Title IV - 21st Century Schools	32,396.84					
8741 Elementary and Secondary School Emergency Relief Fund (ESSER)	68,432.82					
8810 School-Based Access Medicaid Reimbursement Program (SBAP) Reimbursements (Access)	188,331.86					
8820 Medical Assistance Reimbursement for Administrative Claiming (Quarterly) Program	14,189.65					
<b>8000 Total Revenue from Federal Sources</b>	<b>\$861,778.33</b>					
<b>Total From All Sources</b>	<b>\$25,682,791.74</b>					

LEA : 127045653      New Brighton Area SD

Printed 12/1/2020 10:03:28 AM

	Capital Reserve (1431) (32)	Other Capital Projects Fund (39)	Debt Service (40)	Permanent (90)	Total
<b>7000 Revenue from State Sources</b>					
7820 State Share of Retirement Contributions					2,414,568.24
<b>7000 Total Revenue from State Sources</b>					<b>\$17,237,306.06</b>
<b>8000 Revenue from Federal Sources</b>					
8514 NCLB, Title I - Improving the Academic Achievement of the Disadvantaged					493,085.16
8515 NCLB, Title II - Preparing, Training and Recruiting High Quality Teachers and Principals					65,342.00
8517 NCLB, Title IV - 21st Century Schools					32,396.84
8741 Elementary and Secondary School Emergency Relief Fund (ESSER)					68,432.82
8810 School-Based Access Medicaid Reimbursement Program (SBAP) Reimbursements (Access)					188,331.86
8820 Medical Assistance Reimbursement for Administrative Claiming (Quarterly) Program					14,189.65
<b>8000 Total Revenue from Federal Sources</b>					<b>\$861,778.33</b>
<b>Total From All Sources</b>	<b>\$4,234.00</b>	<b>\$2,831.00</b>			<b>\$25,689,856.74</b>

LEA : 127045653     New Brighton Area SD

Printed 12/1/2020 10:03:32 AM

	<u>General Fund (10)</u>	<u>Student Sponsored Activity Fund (21)</u>	<u>Public Purpose Trust (27)</u>	<u>Other Compt Approved (28)</u>	<u>Athletic / Activity (29)</u>	<u>Capital Reserve (690. 1850) (31)</u>
Revenue from Local Sources	7,583,707.35					
Revenue from State Sources	17,237,306.06					
Revenue from Federal Sources	861,778.33					
Total From All Sources	\$25,682,791.74					



LEA : 127045653    New Brighton Area SD

Printed 12/1/2020 10:03:32 AM

	<u>Capital Reserve (1431)</u> <u>(32)</u>	<u>Other Capital Projects</u> <u>Fund (39)</u>	<u>Debt Service (40)</u>	<u>Permanent (90)</u>	<u>Total</u>
Revenue from Local Sources	4,234.00	2,831.00			7,590,772.35
Revenue from State Sources					17,237,306.06
Revenue from Federal Sources					861,778.33
Total From All Sources	\$4,234.00	\$2,831.00			\$25,689,856.74

LEA : 127045653      New Brighton Area SD

Printed 12/1/2020 10:03:38 AM

<b>General Fund (10)</b>	
<b>1000 Instruction</b>	<b><u>Total</u></b>
<b>100 <u>Personnel Services – Salaries</u></b>	
100 Personnel Services – Salaries	7,631,130.35
<b>Total Personnel Services – Salaries</b>	<b>\$7,631,130.35</b>
<b>200 <u>Personnel Services – Employee Benefits</u></b>	
210 Group Insurance – Contracted Provider	1,596,557.24
220 Social Security Contributions	559,877.51
230 PSERS Retirement Contributions	2,533,011.82
250 Unemployment Compensation	(863.77)
260 Workers' Compensation	29,467.07
<b>Total Personnel Services – Employee Benefits</b>	<b>\$4,718,049.87</b>
<b>300 <u>Purchased Professional and Technical Services</u></b>	
329 Professional Educational Services – Other	214,041.73
330 Other Professional Services	166,706.53
390 Other Purchased Professional and Technical Services	3,944.00
<b>Total Purchased Professional and Technical Services</b>	<b>\$384,692.26</b>
<b>400 <u>Purchased Property Services</u></b>	
440 Rentals	35,379.07
<b>Total Purchased Property Services</b>	<b>\$35,379.07</b>
<b>500 <u>Other Purchased Services</u></b>	
530 Communications	13,649.70
561 Tuition To Other School Districts Within the State	59,408.38
562 Tuition To Pennsylvania Charter Schools	1,116,104.79
563 Tuition To Nonpublic Schools	335,399.18
564 Tuition To Career and Technology Centers	439,415.06
567 Tuition To Approved Private Schools (APS) and PA Chartered Schools for the Deaf and Blind	228,049.03
568 Tuition To Private Residential Rehabilitative Institutions (PRRI) [In-State] and Detention Centers	92,743.75
580 Travel	3,951.63
596 Direct Payments To Intermediate Units	160,394.01
<b>Total Other Purchased Services</b>	<b>\$2,449,115.53</b>
<b>600 <u>Supplies</u></b>	
610 General Supplies	337,471.92
630 Food	13,212.34
640 Books and Periodicals	112,722.79
650 Supplies & Fees – Technology Related	251,036.00
<b>Total Supplies</b>	<b>\$714,443.05</b>
<b>800 <u>Other Objects</u></b>	
810 Dues and Fees	145.00
890 Miscellaneous Expenditures	2,974.00
<b>Total Other Objects</b>	<b>\$3,119.00</b>
<b>Total 1000 Instruction</b>	<b>\$15,935,929.13</b>

LEA : 127045653      New Brighton Area SD

Printed 12/1/2020 10:03:38 AM

General Fund (10)

1100 Regular Programs – Elementary / Secondary	Elementary	Secondary	Federal	Total
<b>100 Personnel Services – Salaries</b>				
100 Personnel Services – Salaries	2,756,964.61	2,709,627.60	315,511.48	5,782,103.69
<b>Total Personnel Services – Salaries</b>	<b>\$2,756,964.61</b>	<b>\$2,709,627.60</b>	<b>\$315,511.48</b>	<b>\$5,782,103.69</b>
<b>200 Personnel Services – Employee Benefits</b>				
210 Group Insurance – Contracted Provider	579,138.98	525,929.81	93,902.94	1,198,971.73
220 Social Security Contributions	201,104.91	198,652.61	25,406.67	425,164.19
230 PSERS Retirement Contributions	907,377.93	893,494.63	115,769.34	1,916,641.90
250 Unemployment Compensation	(717.07)	(4,509.18)	479.97	(4,746.28)
260 Workers' Compensation	6,287.51	9,276.65	2,194.20	17,758.36
<b>Total Personnel Services – Employee Benefits</b>	<b>\$1,693,192.26</b>	<b>\$1,622,844.52</b>	<b>\$237,753.12</b>	<b>\$3,553,789.90</b>
<b>300 Purchased Professional and Technical Services</b>				
329 Professional Educational Services – Other	93,981.29	82,214.46		176,195.75
330 Other Professional Services	315.69	612.81		928.50
390 Other Purchased Professional and Technical Services		900.00	3,044.00	3,944.00
<b>Total Purchased Professional and Technical Services</b>	<b>\$94,296.98</b>	<b>\$83,727.27</b>	<b>\$3,044.00</b>	<b>\$181,068.25</b>
<b>400 Purchased Property Services</b>				
440 Rentals	16,495.79	18,883.28		35,379.07
<b>Total Purchased Property Services</b>	<b>\$16,495.79</b>	<b>\$18,883.28</b>		<b>\$35,379.07</b>
<b>500 Other Purchased Services</b>				
530 Communications	4,640.90	9,008.80		13,649.70
562 Tuition To Pennsylvania Charter Schools	256,737.79	498,239.73		754,977.52
<b>Total Other Purchased Services</b>	<b>\$261,378.69</b>	<b>\$507,248.53</b>		<b>\$768,627.22</b>
<b>600 Supplies</b>				
610 General Supplies	95,710.87	168,886.26	29,306.96	293,904.09
630 Food	4,492.20	8,720.14		13,212.34
640 Books and Periodicals	77,895.21	34,445.91		112,341.12
650 Supplies & Fees – Technology Related	76,092.00	147,708.00	27,236.00	251,036.00
<b>Total Supplies</b>	<b>\$254,190.28</b>	<b>\$359,760.31</b>	<b>\$56,542.96</b>	<b>\$670,493.55</b>
<b>800 Other Objects</b>				
810 Dues and Fees	120.00	25.00		145.00
<b>Total Other Objects</b>	<b>\$120.00</b>	<b>\$25.00</b>		<b>\$145.00</b>
<b>Total 1100 Regular Programs – Elementary / Secondary</b>	<b>\$5,076,638.61</b>	<b>\$5,302,116.51</b>	<b>\$612,851.56</b>	<b>\$10,991,606.68</b>

LEA : 127045653      New Brighton Area SD

Printed 12/1/2020 10:03:38 AM

General Fund (10)

1110 Regular Programs

	Elementary	Secondary	Federal	Total
<b>100 <u>Personnel Services – Salaries</u></b>				
100 Personnel Services – Salaries	2,756,964.61	2,709,627.60		5,466,592.21
<b>Total Personnel Services – Salaries</b>	<b>\$2,756,964.61</b>	<b>\$2,709,627.60</b>		<b>\$5,466,592.21</b>
<b>200 <u>Personnel Services – Employee Benefits</u></b>				
210 Group Insurance – Contracted Provider	579,138.98	525,929.81		1,105,068.79
220 Social Security Contributions	201,104.91	198,652.61		399,757.52
230 PSERS Retirement Contributions	907,377.93	893,494.63		1,800,872.56
250 Unemployment Compensation	(717.07)	(4,509.18)		(5,226.25)
260 Workers' Compensation	6,287.51	9,276.65		15,564.16
<b>Total Personnel Services – Employee Benefits</b>	<b>\$1,693,192.26</b>	<b>\$1,622,844.52</b>		<b>\$3,316,036.78</b>
<b>300 <u>Purchased Professional and Technical Services</u></b>				
329 Professional Educational Services – Other	93,981.29	82,214.46		176,195.75
330 Other Professional Services	315.69	612.81		928.50
390 Other Purchased Professional and Technical Services		900.00		900.00
<b>Total Purchased Professional and Technical Services</b>	<b>\$94,296.98</b>	<b>\$83,727.27</b>		<b>\$178,024.25</b>
<b>400 <u>Purchased Property Services</u></b>				
440 Rentals	16,495.79	18,883.28		35,379.07
<b>Total Purchased Property Services</b>	<b>\$16,495.79</b>	<b>\$18,883.28</b>		<b>\$35,379.07</b>
<b>500 <u>Other Purchased Services</u></b>				
530 Communications	4,640.90	9,008.80		13,649.70
562 Tuition To Pennsylvania Charter Schools	256,737.79	498,239.73		754,977.52
<b>Total Other Purchased Services</b>	<b>\$261,378.69</b>	<b>\$507,248.53</b>		<b>\$768,627.22</b>
<b>600 <u>Supplies</u></b>				
610 General Supplies	95,710.87	168,886.26		264,597.13
630 Food	4,492.20	8,720.14		13,212.34
640 Books and Periodicals	77,895.21	34,445.91		112,341.12
650 Supplies & Fees – Technology Related	76,092.00	147,708.00	27,236.00	251,036.00
<b>Total Supplies</b>	<b>\$254,190.28</b>	<b>\$359,760.31</b>	<b>\$27,236.00</b>	<b>\$641,186.59</b>
<b>800 <u>Other Objects</u></b>				
810 Dues and Fees	120.00	25.00		145.00
<b>Total Other Objects</b>	<b>\$120.00</b>	<b>\$25.00</b>		<b>\$145.00</b>
<b>Total 1110 Regular Programs</b>	<b>\$5,076,638.61</b>	<b>\$5,302,116.51</b>	<b>\$27,236.00</b>	<b>\$10,405,991.12</b>

LEA : 127045653      New Brighton Area SD

Printed 12/1/2020 10:03:38 AM

General Fund (10)				
1190 Federally-Funded Regular Programs	<u>Elementary</u>	<u>Secondary</u>	<u>Federal</u>	<u>Total</u>
100 <u>Personnel Services – Salaries</u>				
100 Personnel Services – Salaries			315,511.48	315,511.48
Total Personnel Services – Salaries			\$315,511.48	\$315,511.48
200 <u>Personnel Services – Employee Benefits</u>				
210 Group Insurance – Contracted Provider			93,902.94	93,902.94
220 Social Security Contributions			25,406.67	25,406.67
230 PSERS Retirement Contributions			115,769.34	115,769.34
250 Unemployment Compensation			479.97	479.97
260 Workers' Compensation			2,194.20	2,194.20
Total Personnel Services – Employee Benefits			\$237,753.12	\$237,753.12
300 <u>Purchased Professional and Technical Services</u>				
390 Other Purchased Professional and Technical Services			3,044.00	3,044.00
Total Purchased Professional and Technical Services			\$3,044.00	\$3,044.00
600 <u>Supplies</u>				
610 General Supplies			29,306.96	29,306.96
Total Supplies			\$29,306.96	\$29,306.96
Total 1190 Federally-Funded Regular Programs			\$585,615.56	\$585,615.56

LEA : 127045653      New Brighton Area SD

Printed 12/1/2020 10:03:38 AM

General Fund (10)

1200 Special Programs – Elementary / Secondary	Elementary	Secondary	Federal	Total
<b>100 Personnel Services – Salaries</b>				
100 Personnel Services – Salaries	770,668.41	567,315.72	2,156.61	1,340,140.74
<b>Total Personnel Services – Salaries</b>	<b>\$770,668.41</b>	<b>\$567,315.72</b>	<b>\$2,156.61</b>	<b>\$1,340,140.74</b>
<b>200 Personnel Services – Employee Benefits</b>				
210 Group Insurance – Contracted Provider	173,391.05	129,778.97		303,170.02
220 Social Security Contributions	56,023.04	41,008.08	164.98	97,196.10
230 PSERS Retirement Contributions	255,496.06	187,550.76	739.50	443,786.32
250 Unemployment Compensation	2,143.44	1,033.36	17.25	3,194.05
260 Workers' Compensation	4,884.69	3,574.84	14.02	8,473.55
<b>Total Personnel Services – Employee Benefits</b>	<b>\$491,938.28</b>	<b>\$362,946.01</b>	<b>\$935.75</b>	<b>\$855,820.04</b>
<b>300 Purchased Professional and Technical Services</b>				
329 Professional Educational Services – Other	15,602.19	22,243.79		37,845.98
330 Other Professional Services	1,436.39	2,788.29	156,670.63	160,895.31
<b>Total Purchased Professional and Technical Services</b>	<b>\$17,038.58</b>	<b>\$25,032.08</b>	<b>\$156,670.63</b>	<b>\$198,741.29</b>
<b>500 Other Purchased Services</b>				
561 Tuition To Other School Districts Within the State	59,408.38			59,408.38
562 Tuition To Pennsylvania Charter Schools	122,783.27	238,344.00		361,127.27
563 Tuition To Nonpublic Schools	13,904.59	26,991.25	294,503.34	335,399.18
567 Tuition To Approved Private Schools (APS) and PA Chartered Schools for the Deaf and Blind	77,536.67	150,512.36		228,049.03
580 Travel	1,332.80	2,587.20		3,920.00
596 Direct Payments To Intermediate Units	54,533.96	105,860.05		160,394.01
<b>Total Other Purchased Services</b>	<b>\$329,499.67</b>	<b>\$524,294.86</b>	<b>\$294,503.34</b>	<b>\$1,148,297.87</b>
<b>600 Supplies</b>				
610 General Supplies	8,917.92	6,043.90	7,140.04	22,101.86
640 Books and Periodicals	35.20	346.47		381.67
<b>Total Supplies</b>	<b>\$8,953.12</b>	<b>\$6,390.37</b>	<b>\$7,140.04</b>	<b>\$22,483.53</b>
<b>800 Other Objects</b>				
890 Miscellaneous Expenditures	1,011.16	1,962.84		2,974.00
<b>Total Other Objects</b>	<b>\$1,011.16</b>	<b>\$1,962.84</b>		<b>\$2,974.00</b>
<b>Total 1200 Special Programs – Elementary / Secondary</b>	<b>\$1,619,109.22</b>	<b>\$1,487,941.88</b>	<b>\$461,406.37</b>	<b>\$3,568,457.47</b>

LEA : 127045653      New Brighton Area SD

Printed 12/1/2020 10:03:38 AM

<b>General Fund (10)</b>				
<b>1240 Academic Support</b>	<u>Elementary</u>	<u>Secondary</u>	<u>Federal</u>	<u>Total</u>
<b>100 <u>Personnel Services – Salaries</u></b>				
100 Personnel Services – Salaries	770,668.41	567,315.72		1,337,984.13
<b>Total Personnel Services – Salaries</b>	<b>\$770,668.41</b>	<b>\$567,315.72</b>		<b>\$1,337,984.13</b>
<b>200 <u>Personnel Services – Employee Benefits</u></b>				
210 Group Insurance – Contracted Provider	173,391.05	129,778.97		303,170.02
220 Social Security Contributions	56,023.04	41,008.08		97,031.12
230 PSERS Retirement Contributions	255,496.06	187,550.76		443,046.82
250 Unemployment Compensation	2,143.44	1,033.36		3,176.80
260 Workers' Compensation	4,884.69	3,574.84		8,459.53
<b>Total Personnel Services – Employee Benefits</b>	<b>\$491,938.28</b>	<b>\$362,946.01</b>		<b>\$854,884.29</b>
<b>300 <u>Purchased Professional and Technical Services</u></b>				
329 Professional Educational Services – Other	15,602.19	22,243.79		37,845.98
330 Other Professional Services	1,436.39	2,788.29	155,670.63	159,895.31
<b>Total Purchased Professional and Technical Services</b>	<b>\$17,038.58</b>	<b>\$25,032.08</b>	<b>\$155,670.63</b>	<b>\$197,741.29</b>
<b>500 <u>Other Purchased Services</u></b>				
561 Tuition To Other School Districts Within the State	59,408.38			59,408.38
562 Tuition To Pennsylvania Charter Schools	122,783.27	238,344.00		361,127.27
563 Tuition To Nonpublic Schools	13,904.59	26,991.25	294,503.34	335,399.18
580 Travel	1,332.80	2,587.20		3,920.00
596 Direct Payments To Intermediate Units	54,533.96	105,860.05		160,394.01
<b>Total Other Purchased Services</b>	<b>\$251,963.00</b>	<b>\$373,782.50</b>	<b>\$294,503.34</b>	<b>\$920,248.84</b>
<b>600 <u>Supplies</u></b>				
610 General Supplies	8,917.92	6,043.90	7,140.04	22,101.86
640 Books and Periodicals	35.20	346.47		381.67
<b>Total Supplies</b>	<b>\$8,953.12</b>	<b>\$6,390.37</b>	<b>\$7,140.04</b>	<b>\$22,483.53</b>
<b>800 <u>Other Objects</u></b>				
890 Miscellaneous Expenditures	1,011.16	1,962.84		2,974.00
<b>Total Other Objects</b>	<b>\$1,011.16</b>	<b>\$1,962.84</b>		<b>\$2,974.00</b>
<b>Total 1240 Academic Support</b>	<b>\$1,541,572.55</b>	<b>\$1,337,429.52</b>	<b>\$457,314.01</b>	<b>\$3,336,316.08</b>

LEA : 127045653      New Brighton Area SD

Printed 12/1/2020 10:03:38 AM

General Fund (10)				
1241 Learning Support – Public	<u>Elementary</u>	<u>Secondary</u>	<u>Federal</u>	<u>Total</u>
100 <u>Personnel Services – Salaries</u>				
100 Personnel Services – Salaries	703,394.21	516,351.42		1,219,745.63
<b>Total Personnel Services – Salaries</b>	<b>\$703,394.21</b>	<b>\$516,351.42</b>		<b>\$1,219,745.63</b>
200 <u>Personnel Services – Employee Benefits</u>				
210 Group Insurance – Contracted Provider	157,007.85	118,823.35		275,831.20
220 Social Security Contributions	51,197.96	37,685.06		88,883.02
230 PSERS Retirement Contributions	232,502.49	170,486.28		402,988.77
250 Unemployment Compensation	2,054.33	983.23		3,037.56
260 Workers' Compensation	4,448.80	3,251.37		7,700.17
<b>Total Personnel Services – Employee Benefits</b>	<b>\$447,211.43</b>	<b>\$331,229.29</b>		<b>\$778,440.72</b>
300 <u>Purchased Professional and Technical Services</u>				
329 Professional Educational Services – Other	15,602.19	22,243.79		37,845.98
330 Other Professional Services	59.39	115.29	155,670.63	155,845.31
<b>Total Purchased Professional and Technical Services</b>	<b>\$15,661.58</b>	<b>\$22,359.08</b>	<b>\$155,670.63</b>	<b>\$193,691.29</b>
500 <u>Other Purchased Services</u>				
561 Tuition To Other School Districts Within the State	59,408.38			59,408.38
562 Tuition To Pennsylvania Charter Schools	122,783.27	238,344.00		361,127.27
563 Tuition To Nonpublic Schools			294,503.34	294,503.34
580 Travel	319.60	620.40		940.00
596 Direct Payments To Intermediate Units	54,533.96	105,860.05		160,394.01
<b>Total Other Purchased Services</b>	<b>\$237,045.21</b>	<b>\$344,824.45</b>	<b>\$294,503.34</b>	<b>\$876,373.00</b>
600 <u>Supplies</u>				
610 General Supplies	8,638.00	5,807.34	7,140.04	21,585.38
<b>Total Supplies</b>	<b>\$8,638.00</b>	<b>\$5,807.34</b>	<b>\$7,140.04</b>	<b>\$21,585.38</b>
<b>Total 1241 Learning Support – Public</b>	<b>\$1,411,950.43</b>	<b>\$1,220,571.58</b>	<b>\$457,314.01</b>	<b>\$3,089,836.02</b>



LEA : 127045653     New Brighton Area SD

Printed 12/1/2020 10:03:38 AM

General Fund (10)				
1242 Learning Support – PRRI	<u>Elementary</u>	<u>Secondary</u>	<u>Federal</u>	<u>Total</u>
500 <u>Other Purchased Services</u>				
563 Tuition To Nonpublic Schools	13,904.59	26,991.25		40,895.84
Total Other Purchased Services	\$13,904.59	\$26,991.25		\$40,895.84
Total 1242 Learning Support – PRRI	\$13,904.59	\$26,991.25		\$40,895.84

LEA : 127045653      New Brighton Area SD

Printed 12/1/2020 10:03:38 AM

General Fund (10)

1243 Gifted Support

	Elementary	Secondary	Federal	Total
<b>100 <u>Personnel Services – Salaries</u></b>				
100 Personnel Services – Salaries	67,274.20	50,964.30		118,238.50
<b>Total Personnel Services – Salaries</b>	<b>\$67,274.20</b>	<b>\$50,964.30</b>		<b>\$118,238.50</b>
<b>200 <u>Personnel Services – Employee Benefits</u></b>				
210 Group Insurance – Contracted Provider	16,383.20	10,955.62		27,338.82
220 Social Security Contributions	4,825.08	3,323.02		8,148.10
230 PSERS Retirement Contributions	22,993.57	17,064.48		40,058.05
250 Unemployment Compensation	89.11	50.13		139.24
260 Workers' Compensation	435.89	323.47		759.36
<b>Total Personnel Services – Employee Benefits</b>	<b>\$44,726.85</b>	<b>\$31,716.72</b>		<b>\$76,443.57</b>
<b>300 <u>Purchased Professional and Technical Services</u></b>				
330 Other Professional Services	1,377.00	2,673.00		4,050.00
<b>Total Purchased Professional and Technical Services</b>	<b>\$1,377.00</b>	<b>\$2,673.00</b>		<b>\$4,050.00</b>
<b>500 <u>Other Purchased Services</u></b>				
580 Travel	1,013.20	1,966.80		2,980.00
<b>Total Other Purchased Services</b>	<b>\$1,013.20</b>	<b>\$1,966.80</b>		<b>\$2,980.00</b>
<b>600 <u>Supplies</u></b>				
610 General Supplies	279.92	236.56		516.48
640 Books and Periodicals	35.20	346.47		381.67
<b>Total Supplies</b>	<b>\$315.12</b>	<b>\$583.03</b>		<b>\$898.15</b>
<b>800 <u>Other Objects</u></b>				
890 Miscellaneous Expenditures	1,011.16	1,962.84		2,974.00
<b>Total Other Objects</b>	<b>\$1,011.16</b>	<b>\$1,962.84</b>		<b>\$2,974.00</b>
<b>Total 1243 Gifted Support</b>	<b>\$115,717.53</b>	<b>\$89,866.69</b>		<b>\$205,584.22</b>

LEA : 127045653     New Brighton Area SD

Printed 12/1/2020 10:03:38 AM

General Fund (10)

1280 Early Intervention Support	<u>Elementary</u>	<u>Secondary</u>	<u>Federal</u>	<u>Total</u>
100 <u>Personnel Services – Salaries</u>				
100 Personnel Services – Salaries			2,156.61	2,156.61
<b>Total Personnel Services – Salaries</b>			<b>\$2,156.61</b>	<b>\$2,156.61</b>
200 <u>Personnel Services – Employee Benefits</u>				
220 Social Security Contributions			164.98	164.98
230 PSERS Retirement Contributions			739.50	739.50
250 Unemployment Compensation			17.25	17.25
260 Workers' Compensation			14.02	14.02
<b>Total Personnel Services – Employee Benefits</b>			<b>\$935.75</b>	<b>\$935.75</b>
300 <u>Purchased Professional and Technical Services</u>				
330 Other Professional Services			1,000.00	1,000.00
<b>Total Purchased Professional and Technical Services</b>			<b>\$1,000.00</b>	<b>\$1,000.00</b>
<b>Total 1280 Early Intervention Support</b>			<b>\$4,092.36</b>	<b>\$4,092.36</b>

LEA : 127045653     New Brighton Area SD

Printed 12/1/2020 10:03:38 AM

General Fund (10)

1290 Special Programs - Other Support	<u>Elementary</u>	<u>Secondary</u>	<u>Federal</u>	<u>Total</u>
500 <u>Other Purchased Services</u>				
567 Tuition To Approved Private Schools (APS) and PA Chartered Schools for the Deaf and Blind	77,536.67	150,512.36		228,049.03
Total Other Purchased Services	\$77,536.67	\$150,512.36		\$228,049.03
Total 1290 Special Programs - Other Support	\$77,536.67	\$150,512.36		\$228,049.03

LEA : 127045653      New Brighton Area SD

Printed 12/1/2020 10:03:38 AM

General Fund (10)

1300 Vocational Education

	Elementary	Secondary	Federal	Total
<b>100 Personnel Services – Salaries</b>				
100 Personnel Services – Salaries		495,173.42		495,173.42
<b>Total Personnel Services – Salaries</b>		<b>\$495,173.42</b>		<b>\$495,173.42</b>
<b>200 Personnel Services – Employee Benefits</b>				
210 Group Insurance – Contracted Provider		94,415.49		94,415.49
220 Social Security Contributions		36,469.45		36,469.45
230 PSERS Retirement Contributions		167,881.56		167,881.56
250 Unemployment Compensation		678.56		678.56
260 Workers' Compensation		3,146.01		3,146.01
<b>Total Personnel Services – Employee Benefits</b>		<b>\$302,591.07</b>		<b>\$302,591.07</b>
<b>500 Other Purchased Services</b>				
564 Tuition To Career and Technology Centers		439,415.06		439,415.06
<b>Total Other Purchased Services</b>		<b>\$439,415.06</b>		<b>\$439,415.06</b>
<b>600 Supplies</b>				
610 General Supplies		21,358.09		21,358.09
<b>Total Supplies</b>		<b>\$21,358.09</b>		<b>\$21,358.09</b>
<b>Total 1300 Vocational Education</b>		<b>\$1,258,537.64</b>		<b>\$1,258,537.64</b>

LEA : 127045653      New Brighton Area SD

Printed 12/1/2020 10:03:38 AM

General Fund (10)

1400 Other Instructional Programs – Elementary / Secondary	Elementary	Secondary	Federal	Total
100 <u>Personnel Services – Salaries</u>				
100 Personnel Services – Salaries	4,390.25	9,322.25		13,712.50
<b>Total Personnel Services – Salaries</b>	<b>\$4,390.25</b>	<b>\$9,322.25</b>		<b>\$13,712.50</b>
200 <u>Personnel Services – Employee Benefits</u>				
220 Social Security Contributions	335.72	712.05		1,047.77
230 PSERS Retirement Contributions	1,505.42	3,196.62		4,702.04
250 Unemployment Compensation	3.36	6.54		9.90
260 Workers' Compensation	28.54	60.61		89.15
<b>Total Personnel Services – Employee Benefits</b>	<b>\$1,873.04</b>	<b>\$3,975.82</b>		<b>\$5,848.86</b>
500 <u>Other Purchased Services</u>				
568 Tuition To Private Residential Rehabilitative Institutions (PRRI) [In-State] and Detention Centers	31,532.88	61,210.87		92,743.75
580 Travel	10.75	20.88		31.63
<b>Total Other Purchased Services</b>	<b>\$31,543.63</b>	<b>\$61,231.75</b>		<b>\$92,775.38</b>
<b>Total 1400 Other Instructional Programs – Elementary / Secondary</b>	<b>\$37,806.92</b>	<b>\$74,529.82</b>		<b>\$112,336.74</b>

LEA : 127045653      New Brighton Area SD

Printed 12/1/2020 10:03:38 AM

General Fund (10)

1420 Summer School	<u>Elementary</u>	<u>Secondary</u>	<u>Federal</u>	<u>Total</u>
100 <u>Personnel Services – Salaries</u>				
100 Personnel Services – Salaries	3,081.25	5,981.25		9,062.50
<b>Total Personnel Services – Salaries</b>	<b>\$3,081.25</b>	<b>\$5,981.25</b>		<b>\$9,062.50</b>
200 <u>Personnel Services – Employee Benefits</u>				
220 Social Security Contributions	235.72	457.57		693.29
230 PSERS Retirement Contributions	1,056.56	2,050.97		3,107.53
250 Unemployment Compensation	1.22	2.38		3.60
260 Workers' Compensation	20.03	38.88		58.91
<b>Total Personnel Services – Employee Benefits</b>	<b>\$1,313.53</b>	<b>\$2,549.80</b>		<b>\$3,863.33</b>
<b>Total 1420 Summer School</b>	<b>\$4,394.78</b>	<b>\$8,531.05</b>		<b>\$12,925.83</b>

LEA : 127045653     New Brighton Area SD

Printed 12/1/2020 10:03:38 AM

General Fund (10)

1430 Homebound Instruction	<u>Elementary</u>	<u>Secondary</u>	<u>Federal</u>	<u>Total</u>
<b>100 <u>Personnel Services – Salaries</u></b>				
100 Personnel Services – Salaries		800.00		800.00
<b>Total Personnel Services – Salaries</b>		<b>\$800.00</b>		<b>\$800.00</b>
<b>200 <u>Personnel Services – Employee Benefits</u></b>				
220 Social Security Contributions		60.37		60.37
230 PSERS Retirement Contributions		274.32		274.32
260 Workers’ Compensation		5.20		5.20
<b>Total Personnel Services – Employee Benefits</b>		<b>\$339.89</b>		<b>\$339.89</b>
<b>500 <u>Other Purchased Services</u></b>				
580 Travel	10.75	20.88		31.63
<b>Total Other Purchased Services</b>	<b>\$10.75</b>	<b>\$20.88</b>		<b>\$31.63</b>
<b>Total 1430 Homebound Instruction</b>	<b>\$10.75</b>	<b>\$1,160.77</b>		<b>\$1,171.52</b>



LEA : 127045653     New Brighton Area SD

Printed 12/1/2020 10:03:38 AM

General Fund (10)

1440 Alternative Regular Education Programs	<u>Elementary</u>	<u>Secondary</u>	<u>Federal</u>	<u>Total</u>
500 <u>Other Purchased Services</u>				
568 Tuition To Private Residential Rehabilitative Institutions (PRRI) [In-State] and Detention Centers	31,532.88	61,210.87		92,743.75
Total Other Purchased Services	\$31,532.88	\$61,210.87		\$92,743.75
Total 1440 Alternative Regular Education Programs	\$31,532.88	\$61,210.87		\$92,743.75

LEA : 127045653     New Brighton Area SD

Printed 12/1/2020 10:03:38 AM

General Fund (10)

1441 Adjudicated / Court-Placed Programs	<u>Elementary</u>	<u>Secondary</u>	<u>Federal</u>	<u>Total</u>
500 <u>Other Purchased Services</u>				
568 Tuition To Private Residential Rehabilitative Institutions (PRRI) [In-State] and Detention Centers	2,672.78	5,188.33		7,861.11
Total Other Purchased Services	\$2,672.78	\$5,188.33		\$7,861.11
Total 1441 Adjudicated / Court-Placed Programs	\$2,672.78	\$5,188.33		\$7,861.11

LEA : 127045653      New Brighton Area SD

Printed 12/1/2020 10:03:38 AM

General Fund (10)

1442 Alternative Education Programs	<u>Elementary</u>	<u>Secondary</u>	<u>Federal</u>	<u>Total</u>
500 <u>Other Purchased Services</u>				
568 Tuition To Private Residential Rehabilitative Institutions (PRRI) [In-State] and Detention Centers	28,860.10	56,022.54		84,882.64
Total Other Purchased Services	\$28,860.10	\$56,022.54		\$84,882.64
Total 1442 Alternative Education Programs	\$28,860.10	\$56,022.54		\$84,882.64

LEA : 127045653      New Brighton Area SD

Printed 12/1/2020 10:03:38 AM

General Fund (10)

1490 Additional Other Instructional Programs	<u>Elementary</u>	<u>Secondary</u>	<u>Federal</u>	<u>Total</u>
100 <u>Personnel Services – Salaries</u>				
100 Personnel Services – Salaries	1,309.00	2,541.00		3,850.00
<b>Total Personnel Services – Salaries</b>	<b>\$1,309.00</b>	<b>\$2,541.00</b>		<b>\$3,850.00</b>
200 <u>Personnel Services – Employee Benefits</u>				
220 Social Security Contributions	100.00	194.11		294.11
230 PSERS Retirement Contributions	448.86	871.33		1,320.19
250 Unemployment Compensation	2.14	4.16		6.30
260 Workers' Compensation	8.51	16.53		25.04
<b>Total Personnel Services – Employee Benefits</b>	<b>\$559.51</b>	<b>\$1,086.13</b>		<b>\$1,645.64</b>
<b>Total 1490 Additional Other Instructional Programs</b>	<b>\$1,868.51</b>	<b>\$3,627.13</b>		<b>\$5,495.64</b>

Page - 20 of 20

[illegible][illegible]

4,882.72	4,882.72
----------	----------

\$4,882.72	\$4,882.72
------------	------------

107.88	107.88
--------	--------

\$107.88	\$107.88
----------	----------

\$4,990.60	\$4,990.60
------------	------------

LEA : 127045653      New Brighton Area SD

Printed 12/1/2020 10:03:43 AM

General Fund (10)

2000 Support Services	Total
100 <u>Personnel Services – Salaries</u>	
100 Personnel Services – Salaries	2,740,310.76
<b>Total Personnel Services – Salaries</b>	<b>\$2,740,310.76</b>
200 <u>Personnel Services – Employee Benefits</u>	
210 Group Insurance – Contracted Provider	644,766.84
220 Social Security Contributions	200,171.19
230 PSERS Retirement Contributions	902,037.27
240 Tuition Reimbursement	24,931.96
250 Unemployment Compensation	4,183.98
260 Workers' Compensation	7,638.51
<b>Total Personnel Services – Employee Benefits</b>	<b>\$1,783,729.75</b>
300 <u>Purchased Professional and Technical Services</u>	
310 Official / Administrative Services	17,829.96
329 Professional Educational Services – Other	17,941.93
330 Other Professional Services	260,685.55
340 Technical Services	59,509.61
360 Employee Training and Development Services	2,939.80
390 Other Purchased Professional and Technical Services	133,595.67
<b>Total Purchased Professional and Technical Services</b>	<b>\$492,502.52</b>
400 <u>Purchased Property Services</u>	
410 Cleaning Services	13,021.18
420 Utility Services	46,765.15
430 Repairs and Maintenance Services	150,586.78
440 Rentals	9,177.41
490 Other Purchased Property Services	7,355.00
<b>Total Purchased Property Services</b>	<b>\$226,905.52</b>
500 <u>Other Purchased Services</u>	
513 Contracted Carriers	1,143,623.62
516 Student Transportation Services From the IU	3,851.90
520 Insurance – General	3,873.00
523 General Property and Liability Insurance	109,072.00
530 Communications	40,535.11
549 Other Advertising/Public Relations	7,052.88
580 Travel	3,911.80
595 IU Payments By Withholding	6,832.13
<b>Total Other Purchased Services</b>	<b>\$1,318,752.44</b>
600 <u>Supplies</u>	
610 General Supplies	273,094.63
620 Energy	378,221.58
640 Books and Periodicals	11,404.38
650 Supplies & Fees – Technology Related	138,731.92
<b>Total Supplies</b>	<b>\$801,452.51</b>

LEA : 127045653      New Brighton Area SD

Printed 12/1/2020 10:03:43 AM

General Fund (10)

2000 Support Services

Total

700 Property

758 Capitalized Technology Software - Original	2,878.00
762 Capitalized Equipment - Replacement	18,449.10
768 Capitalized Technology Software - Replacement	12,603.00
790 Other Property	3,800.00

Total Property	\$37,730.10
----------------	-------------

800 Other Objects

810 Dues and Fees	21,277.98
-------------------	-----------

Total Other Objects	\$21,277.98
---------------------	-------------

Total 2000 Support Services	\$7,422,661.58
-----------------------------	----------------

LEA : 127045653      New Brighton Area SD

Printed 12/1/2020 10:03:43 AM

General Fund (10)				
2100 Support Services – Students	<u>Elementary</u>	<u>Secondary</u>	<u>Federal</u>	<u>Total</u>
100 <u>Personnel Services – Salaries</u>				
100 Personnel Services – Salaries	147,679.60	195,671.79		457,110.39
<b>Total Personnel Services – Salaries</b>	<b>\$147,679.60</b>	<b>\$195,671.79</b>		<b>\$457,110.39</b>
200 <u>Personnel Services – Employee Benefits</u>				
210 Group Insurance – Contracted Provider	38,605.97	36,396.06		93,064.79
220 Social Security Contributions	10,863.57	14,301.23		33,639.80
230 PSERS Retirement Contributions	49,655.00	65,726.31		153,021.13
250 Unemployment Compensation	195.54	347.19		702.70
260 Workers' Compensation	935.28	1,240.62		2,902.87
<b>Total Personnel Services – Employee Benefits</b>	<b>\$100,255.36</b>	<b>\$118,011.41</b>		<b>\$283,331.29</b>
300 <u>Purchased Professional and Technical Services</u>				
330 Other Professional Services	52,048.27	101,034.88		153,083.15
390 Other Purchased Professional and Technical Services	115.50	234.50		350.00
<b>Total Purchased Professional and Technical Services</b>	<b>\$52,163.77</b>	<b>\$101,269.38</b>		<b>\$153,433.15</b>
500 <u>Other Purchased Services</u>				
580 Travel	43.67			43.67
<b>Total Other Purchased Services</b>	<b>\$43.67</b>			<b>\$43.67</b>
600 <u>Supplies</u>				
610 General Supplies	484.01	803.27		1,582.54
<b>Total Supplies</b>	<b>\$484.01</b>	<b>\$803.27</b>		<b>\$1,582.54</b>
800 <u>Other Objects</u>				
810 Dues and Fees	142.76	249.24		392.00
<b>Total Other Objects</b>	<b>\$142.76</b>	<b>\$249.24</b>		<b>\$392.00</b>
<b>Total 2100 Support Services – Students</b>	<b>\$300,769.17</b>	<b>\$416,005.09</b>		<b>\$895,893.04</b>



LEA : 127045653      New Brighton Area SD

Printed 12/1/2020 10:03:43 AM

General Fund (10)				
2120 Guidance Services	<u>Elementary</u>	<u>Secondary</u>	<u>Federal</u>	<u>Total</u>
100 <u>Personnel Services – Salaries</u>				
100 Personnel Services – Salaries	96,174.21	195,671.79		291,846.00
<b>Total Personnel Services – Salaries</b>	<b>\$96,174.21</b>	<b>\$195,671.79</b>		<b>\$291,846.00</b>
200 <u>Personnel Services – Employee Benefits</u>				
210 Group Insurance – Contracted Provider	20,595.41	36,396.06		56,991.47
220 Social Security Contributions	7,147.96	14,301.23		21,449.19
230 PSERS Retirement Contributions	32,641.95	65,726.31		98,368.26
250 Unemployment Compensation	132.78	347.19		479.97
260 Workers' Compensation	612.81	1,240.62		1,853.43
<b>Total Personnel Services – Employee Benefits</b>	<b>\$61,130.91</b>	<b>\$118,011.41</b>		<b>\$179,142.32</b>
300 <u>Purchased Professional and Technical Services</u>				
390 Other Purchased Professional and Technical Services	115.50	234.50		350.00
<b>Total Purchased Professional and Technical Services</b>	<b>\$115.50</b>	<b>\$234.50</b>		<b>\$350.00</b>
500 <u>Other Purchased Services</u>				
580 Travel	43.67			43.67
<b>Total Other Purchased Services</b>	<b>\$43.67</b>			<b>\$43.67</b>
600 <u>Supplies</u>				
610 General Supplies	484.01	803.27		1,287.28
<b>Total Supplies</b>	<b>\$484.01</b>	<b>\$803.27</b>		<b>\$1,287.28</b>
800 <u>Other Objects</u>				
810 Dues and Fees	142.76	249.24		392.00
<b>Total Other Objects</b>	<b>\$142.76</b>	<b>\$249.24</b>		<b>\$392.00</b>
<b>Total 2120 Guidance Services</b>	<b>\$158,091.06</b>	<b>\$314,970.21</b>		<b>\$473,061.27</b>

LEA : 127045653     New Brighton Area SD

Printed 12/1/2020 10:03:43 AM

General Fund (10)

2140 Psychological Services

300 Purchased Professional and Technical Services

	<u>Elementary</u>	<u>Secondary</u>	<u>Federal</u>	<u>Total</u>
330 Other Professional Services	45,504.97	88,333.18		133,838.15
<b>Total Purchased Professional and Technical Services</b>	<b>\$45,504.97</b>	<b>\$88,333.18</b>		<b>\$133,838.15</b>
<b>Total 2140 Psychological Services</b>	<b>\$45,504.97</b>	<b>\$88,333.18</b>		<b>\$133,838.15</b>

LEA : 127045653      New Brighton Area SD

Printed 12/1/2020 10:03:43 AM

General Fund (10)

2150 Speech Pathology and Audiology Services	Elementary	Secondary	Federal	Total
100 <u>Personnel Services – Salaries</u>				
100 Personnel Services – Salaries	51,505.39			51,505.39
<b>Total Personnel Services – Salaries</b>	<b>\$51,505.39</b>			<b>\$51,505.39</b>
200 <u>Personnel Services – Employee Benefits</u>				
210 Group Insurance – Contracted Provider	18,010.56			18,010.56
220 Social Security Contributions	3,715.61			3,715.61
230 PSERS Retirement Contributions	17,013.05			17,013.05
250 Unemployment Compensation	62.76			62.76
260 Workers' Compensation	322.47			322.47
<b>Total Personnel Services – Employee Benefits</b>	<b>\$39,124.45</b>			<b>\$39,124.45</b>
300 <u>Purchased Professional and Technical Services</u>				
330 Other Professional Services	6,543.30	12,701.70		19,245.00
<b>Total Purchased Professional and Technical Services</b>	<b>\$6,543.30</b>	<b>\$12,701.70</b>		<b>\$19,245.00</b>
<b>Total 2150 Speech Pathology and Audiology Services</b>	<b>\$97,173.14</b>	<b>\$12,701.70</b>		<b>\$109,874.84</b>

LEA : 127045653      New Brighton Area SD

Printed 12/1/2020 10:03:43 AM

General Fund (10)

2160 Social Work Services

	<u>Elementary</u>	<u>Secondary</u>	<u>Federal</u>	<u>Total</u>
<b>100 <u>Personnel Services – Salaries</u></b>				
100 Personnel Services – Salaries				113,759.00
<b>Total Personnel Services – Salaries</b>				<b>\$113,759.00</b>
<b>200 <u>Personnel Services – Employee Benefits</u></b>				
210 Group Insurance – Contracted Provider				18,062.76
220 Social Security Contributions				8,475.00
230 PSERS Retirement Contributions				37,639.82
250 Unemployment Compensation				159.97
260 Workers' Compensation				726.97
<b>Total Personnel Services – Employee Benefits</b>				<b>\$65,064.52</b>
<b>600 <u>Supplies</u></b>				
610 General Supplies				295.26
<b>Total Supplies</b>				<b>\$295.26</b>
<b>Total 2160 Social Work Services</b>				<b>\$179,118.78</b>

LEA : 127045653      New Brighton Area SD

Printed 12/1/2020 10:03:43 AM

General Fund (10)

2200 Support Services – Instructional Staff	Elementary	Secondary	Federal	Total
100 <u>Personnel Services – Salaries</u>				
100 Personnel Services – Salaries	117,432.81	172,899.50		290,332.31
<b>Total Personnel Services – Salaries</b>	<b>\$117,432.81</b>	<b>\$172,899.50</b>		<b>\$290,332.31</b>
200 <u>Personnel Services – Employee Benefits</u>				
210 Group Insurance – Contracted Provider	27,254.39	27,454.65		54,709.04
220 Social Security Contributions	8,571.21	12,716.48		21,287.69
230 PSERS Retirement Contributions	38,802.71	57,367.95		96,170.66
240 Tuition Reimbursement	8,476.87	16,455.09		24,931.96
250 Unemployment Compensation	175.15	225.89		401.04
260 Workers' Compensation	744.83	1,105.33		1,850.16
<b>Total Personnel Services – Employee Benefits</b>	<b>\$84,025.16</b>	<b>\$115,325.39</b>		<b>\$199,350.55</b>
300 <u>Purchased Professional and Technical Services</u>				
360 Employee Training and Development Services	1,138.61	1,801.19		2,939.80
390 Other Purchased Professional and Technical Services	2,223.50	3,629.51		5,853.01
<b>Total Purchased Professional and Technical Services</b>	<b>\$3,362.11</b>	<b>\$5,430.70</b>		<b>\$8,792.81</b>
400 <u>Purchased Property Services</u>				
430 Repairs and Maintenance Services	311.85	633.15		945.00
<b>Total Purchased Property Services</b>	<b>\$311.85</b>	<b>\$633.15</b>		<b>\$945.00</b>
500 <u>Other Purchased Services</u>				
580 Travel	513.63	1,023.63		1,537.26
<b>Total Other Purchased Services</b>	<b>\$513.63</b>	<b>\$1,023.63</b>		<b>\$1,537.26</b>
600 <u>Supplies</u>				
610 General Supplies	2,498.64	3,411.83		5,910.47
640 Books and Periodicals	4,995.66	6,408.72		11,404.38
<b>Total Supplies</b>	<b>\$7,494.30</b>	<b>\$9,820.55</b>		<b>\$17,314.85</b>
<b>Total 2200 Support Services – Instructional Staff</b>	<b>\$213,139.86</b>	<b>\$305,132.92</b>		<b>\$518,272.78</b>

LEA : 127045653     New Brighton Area SD

Printed 12/1/2020 10:03:43 AM

General Fund (10)

2240 Computer-Assisted Instruction Support Services

400 Purchased Property Services

	<u>Elementary</u>	<u>Secondary</u>	<u>Federal</u>	<u>Total</u>
430 Repairs and Maintenance Services	311.85	633.15		945.00
<b>Total Purchased Property Services</b>	<b>\$311.85</b>	<b>\$633.15</b>		<b>\$945.00</b>
<b>Total 2240 Computer-Assisted Instruction Support Services</b>	<b>\$311.85</b>	<b>\$633.15</b>		<b>\$945.00</b>

LEA : 127045653     New Brighton Area SD

Printed 12/1/2020 10:03:43 AM

General Fund (10)

2250 School Library Services	<u>Elementary</u>	<u>Secondary</u>	<u>Federal</u>	<u>Total</u>
<b>100 <u>Personnel Services – Salaries</u></b>				
100 Personnel Services – Salaries	55,212.59	52,084.76		107,297.35
<b>Total Personnel Services – Salaries</b>	<b>\$55,212.59</b>	<b>\$52,084.76</b>		<b>\$107,297.35</b>
<b>200 <u>Personnel Services – Employee Benefits</u></b>				
210 Group Insurance – Contracted Provider	20,858.38	15,038.86		35,897.24
220 Social Security Contributions	3,894.66	3,636.16		7,530.82
230 PSERS Retirement Contributions	18,177.42	17,318.87		35,496.29
250 Unemployment Compensation	93.21	66.80		160.01
260 Workers' Compensation	344.63	328.26		672.89
<b>Total Personnel Services – Employee Benefits</b>	<b>\$43,368.30</b>	<b>\$36,388.95</b>		<b>\$79,757.25</b>
<b>300 <u>Purchased Professional and Technical Services</u></b>				
390 Other Purchased Professional and Technical Services	1,111.70	1,471.31		2,583.01
<b>Total Purchased Professional and Technical Services</b>	<b>\$1,111.70</b>	<b>\$1,471.31</b>		<b>\$2,583.01</b>
<b>600 <u>Supplies</u></b>				
610 General Supplies	1,251.58	1,857.93		3,109.51
640 Books and Periodicals	4,995.66	6,408.72		11,404.38
<b>Total Supplies</b>	<b>\$6,247.24</b>	<b>\$8,266.65</b>		<b>\$14,513.89</b>
<b>Total 2250 School Library Services</b>	<b>\$105,939.83</b>	<b>\$98,211.67</b>		<b>\$204,151.50</b>

LEA : 127045653      New Brighton Area SD

Printed 12/1/2020 10:03:43 AM

General Fund (10)				
2260 Instruction and Curriculum Development Services	<u>Elementary</u>	<u>Secondary</u>	<u>Federal</u>	<u>Total</u>
100 <u>Personnel Services – Salaries</u>				
100 Personnel Services – Salaries	62,220.22	120,814.74		183,034.96
<b>Total Personnel Services – Salaries</b>	<b>\$62,220.22</b>	<b>\$120,814.74</b>		<b>\$183,034.96</b>
200 <u>Personnel Services – Employee Benefits</u>				
210 Group Insurance – Contracted Provider	6,396.01	12,415.79		18,811.80
220 Social Security Contributions	4,676.55	9,080.32		13,756.87
230 PSERS Retirement Contributions	20,625.29	40,049.08		60,674.37
250 Unemployment Compensation	81.94	159.09		241.03
260 Workers' Compensation	400.20	777.07		1,177.27
<b>Total Personnel Services – Employee Benefits</b>	<b>\$32,179.99</b>	<b>\$62,481.35</b>		<b>\$94,661.34</b>
300 <u>Purchased Professional and Technical Services</u>				
390 Other Purchased Professional and Technical Services	1,071.00	2,079.00		3,150.00
<b>Total Purchased Professional and Technical Services</b>	<b>\$1,071.00</b>	<b>\$2,079.00</b>		<b>\$3,150.00</b>
500 <u>Other Purchased Services</u>				
580 Travel	263.08	510.68		773.76
<b>Total Other Purchased Services</b>	<b>\$263.08</b>	<b>\$510.68</b>		<b>\$773.76</b>
600 <u>Supplies</u>				
610 General Supplies	506.89	983.97		1,490.86
<b>Total Supplies</b>	<b>\$506.89</b>	<b>\$983.97</b>		<b>\$1,490.86</b>
<b>Total 2260 Instruction and Curriculum Development Services</b>	<b>\$96,241.18</b>	<b>\$186,869.74</b>		<b>\$283,110.92</b>



General Fund (10)

2270 Instructional Staff Professional Development Services	<u>Elementary</u>	<u>Secondary</u>	<u>Federal</u>	<u>Total</u>
<b>200 <u>Personnel Services – Employee Benefits</u></b>				
240 Tuition Reimbursement	8,476.87	16,455.09		24,931.96
<b>Total Personnel Services – Employee Benefits</b>	<b>\$8,476.87</b>	<b>\$16,455.09</b>		<b>\$24,931.96</b>
<b>300 <u>Purchased Professional and Technical Services</u></b>				
360 Employee Training and Development Services	1,138.61	1,801.19		2,939.80
390 Other Purchased Professional and Technical Services	40.80	79.20		120.00
<b>Total Purchased Professional and Technical Services</b>	<b>\$1,179.41</b>	<b>\$1,880.39</b>		<b>\$3,059.80</b>
<b>500 <u>Other Purchased Services</u></b>				
580 Travel	250.55	512.95		763.50
<b>Total Other Purchased Services</b>	<b>\$250.55</b>	<b>\$512.95</b>		<b>\$763.50</b>
<b>600 <u>Supplies</u></b>				
610 General Supplies	740.17	569.93		1,310.10
<b>Total Supplies</b>	<b>\$740.17</b>	<b>\$569.93</b>		<b>\$1,310.10</b>
<b>Total 2270 Instructional Staff Professional Development Services</b>	<b>\$10,647.00</b>	<b>\$19,418.36</b>		<b>\$30,065.36</b>

LEA : 127045653      New Brighton Area SD

Printed 12/1/2020 10:03:43 AM

General Fund (10)				
2300 Support Services – Administration	<u>Elementary</u>	<u>Secondary</u>	<u>Federal</u>	<u>Total</u>
100 <u>Personnel Services – Salaries</u>				
100 Personnel Services – Salaries	237,782.93	359,625.86		821,189.95
<b>Total Personnel Services – Salaries</b>	<b>\$237,782.93</b>	<b>\$359,625.86</b>		<b>\$821,189.95</b>
200 <u>Personnel Services – Employee Benefits</u>				
210 Group Insurance – Contracted Provider	56,217.46	70,410.86		163,289.76
220 Social Security Contributions	17,478.13	26,776.78		60,692.09
230 PSERS Retirement Contributions	79,612.33	120,383.69		263,841.03
250 Unemployment Compensation	303.23	412.94		876.16
260 Workers' Compensation	1,509.27	2,295.65		5,015.06
<b>Total Personnel Services – Employee Benefits</b>	<b>\$155,120.42</b>	<b>\$220,279.92</b>		<b>\$493,714.10</b>
300 <u>Purchased Professional and Technical Services</u>				
310 Official / Administrative Services				17,829.96
330 Other Professional Services				62,034.59
<b>Total Purchased Professional and Technical Services</b>				<b>\$79,864.55</b>
400 <u>Purchased Property Services</u>				
440 Rentals				8,763.39
<b>Total Purchased Property Services</b>				<b>\$8,763.39</b>
500 <u>Other Purchased Services</u>				
520 Insurance – General				3,873.00
530 Communications	3,583.64	6,973.50		10,557.14
549 Other Advertising/Public Relations				7,052.88
580 Travel		817.24		1,469.47
<b>Total Other Purchased Services</b>	<b>\$3,583.64</b>	<b>\$7,790.74</b>		<b>\$22,952.49</b>
600 <u>Supplies</u>				
610 General Supplies	1,996.09	3,771.80	679.50	25,657.56
<b>Total Supplies</b>	<b>\$1,996.09</b>	<b>\$3,771.80</b>	<b>\$679.50</b>	<b>\$25,657.56</b>
800 <u>Other Objects</u>				
810 Dues and Fees	126.72	1,072.28		12,702.12
<b>Total Other Objects</b>	<b>\$126.72</b>	<b>\$1,072.28</b>		<b>\$12,702.12</b>
<b>Total 2300 Support Services – Administration</b>	<b>\$398,609.80</b>	<b>\$592,540.60</b>	<b>\$679.50</b>	<b>\$1,464,844.16</b>

LEA : 127045653      New Brighton Area SD

Printed 12/1/2020 10:03:43 AM

General Fund (10)				
2310 Board Services	<u>Elementary</u>	<u>Secondary</u>	<u>Federal</u>	<u>Total</u>
100 <u>Personnel Services – Salaries</u>				
100 Personnel Services – Salaries				2,500.08
Total Personnel Services – Salaries				\$2,500.08
200 <u>Personnel Services – Employee Benefits</u>				
220 Social Security Contributions				183.60
230 PSERS Retirement Contributions				857.28
250 Unemployment Compensation				3.88
260 Workers' Compensation				16.32
Total Personnel Services – Employee Benefits				\$1,061.08
300 <u>Purchased Professional and Technical Services</u>				
330 Other Professional Services				25,698.00
Total Purchased Professional and Technical Services				\$25,698.00
500 <u>Other Purchased Services</u>				
549 Other Advertising/Public Relations				6,977.88
580 Travel				112.50
Total Other Purchased Services				\$7,090.38
600 <u>Supplies</u>				
610 General Supplies				1,046.19
Total Supplies				\$1,046.19
800 <u>Other Objects</u>				
810 Dues and Fees				50.00
Total Other Objects				\$50.00
Total 2310 Board Services				\$37,445.73

LEA : 127045653     New Brighton Area SD

Printed 12/1/2020 10:03:43 AM

General Fund (10)

2320 Board Treasurer Services	<u>Elementary</u>	<u>Secondary</u>	<u>Federal</u>	<u>Total</u>
500 <u>Other Purchased Services</u>				
520 Insurance – General				250.00
Total Other Purchased Services				\$250.00
Total 2320 Board Treasurer Services				\$250.00

LEA : 127045653      New Brighton Area SD

Printed 12/1/2020 10:03:43 AM

General Fund (10)				
2330 Tax Assessment and Collection Services	<u>Elementary</u>	<u>Secondary</u>	<u>Federal</u>	<u>Total</u>
100 <u>Personnel Services – Salaries</u>				
100 Personnel Services – Salaries				33,200.08
Total Personnel Services – Salaries				\$33,200.08
200 <u>Personnel Services – Employee Benefits</u>				
220 Social Security Contributions				2,539.89
Total Personnel Services – Employee Benefits				\$2,539.89
300 <u>Purchased Professional and Technical Services</u>				
310 Official / Administrative Services				17,829.96
Total Purchased Professional and Technical Services				\$17,829.96
500 <u>Other Purchased Services</u>				
520 Insurance – General				3,623.00
Total Other Purchased Services				\$3,623.00
600 <u>Supplies</u>				
610 General Supplies				13,628.04
Total Supplies				\$13,628.04
Total 2330 Tax Assessment and Collection Services				\$70,820.97

LEA : 127045653     New Brighton Area SD

Printed 12/1/2020 10:03:43 AM

General Fund (10)

2340 Staff Relations and Negotiations Services

Elementary                      Secondary                      Federal                      Total

100 <u>Personnel Services – Salaries</u>				
100 Personnel Services – Salaries				2,295.00
Total Personnel Services – Salaries				\$2,295.00
200 <u>Personnel Services – Employee Benefits</u>				
220 Social Security Contributions				170.51
230 PSERS Retirement Contributions				786.96
260 Workers’ Compensation				14.94
Total Personnel Services – Employee Benefits				\$972.41
Total 2340 Staff Relations and Negotiations Services				\$3,267.41

LEA : 127045653     New Brighton Area SD

Printed 12/1/2020 10:03:43 AM

General Fund (10)				
2350 Legal and Accounting Services	<u>Elementary</u>	<u>Secondary</u>	<u>Federal</u>	<u>Total</u>
300 <u>Purchased Professional and Technical Services</u>				
330 Other Professional Services				36,336.59
Total Purchased Professional and Technical Services				\$36,336.59
Total 2350 Legal and Accounting Services				\$36,336.59

LEA : 127045653      New Brighton Area SD

Printed 12/1/2020 10:03:43 AM

General Fund (10)				
2360 Office of the Superintendent / Executive Director Services	<u>Elementary</u>	<u>Secondary</u>	<u>Federal</u>	<u>Total</u>
100 <u>Personnel Services – Salaries</u>				
100 Personnel Services – Salaries				185,786.00
Total Personnel Services – Salaries				\$185,786.00
200 <u>Personnel Services – Employee Benefits</u>				
210 Group Insurance – Contracted Provider				36,661.44
220 Social Security Contributions				13,543.18
230 PSERS Retirement Contributions				62,200.77
250 Unemployment Compensation				156.11
260 Workers' Compensation				1,178.88
Total Personnel Services – Employee Benefits				\$113,740.38
400 <u>Purchased Property Services</u>				
440 Rentals				8,763.39
Total Purchased Property Services				\$8,763.39
500 <u>Other Purchased Services</u>				
530 Communications	675.05	1,310.40		1,985.45
580 Travel				539.73
Total Other Purchased Services	\$675.05	\$1,310.40		\$2,525.18
600 <u>Supplies</u>				
610 General Supplies			679.50	4,410.84
Total Supplies			\$679.50	\$4,410.84
800 <u>Other Objects</u>				
810 Dues and Fees				11,453.12
Total Other Objects				\$11,453.12
Total 2360 Office of the Superintendent / Executive Director Services	\$675.05	\$1,310.40	\$679.50	\$326,678.91



LEA : 127045653      New Brighton Area SD

Printed 12/1/2020 10:03:43 AM

General Fund (10)				
2370 Community Relations Services	<u>Elementary</u>	<u>Secondary</u>	<u>Federal</u>	<u>Total</u>
500 <u>Other Purchased Services</u>				
549 Other Advertising/Public Relations				75.00
Total Other Purchased Services				\$75.00
600 <u>Supplies</u>				
610 General Supplies				804.60
Total Supplies				\$804.60
Total 2370 Community Relations Services				\$879.60

LEA : 127045653      New Brighton Area SD

Printed 12/1/2020 10:03:43 AM

General Fund (10)				
2380 Office of the Principal Services	<u>Elementary</u>	<u>Secondary</u>	<u>Federal</u>	<u>Total</u>
100 <u>Personnel Services – Salaries</u>				
100 Personnel Services – Salaries	237,782.93	359,625.86		597,408.79
<b>Total Personnel Services – Salaries</b>	<b>\$237,782.93</b>	<b>\$359,625.86</b>		<b>\$597,408.79</b>
200 <u>Personnel Services – Employee Benefits</u>				
210 Group Insurance – Contracted Provider	56,217.46	70,410.86		126,628.32
220 Social Security Contributions	17,478.13	26,776.78		44,254.91
230 PSERS Retirement Contributions	79,612.33	120,383.69		199,996.02
250 Unemployment Compensation	303.23	412.94		716.17
260 Workers' Compensation	1,509.27	2,295.65		3,804.92
<b>Total Personnel Services – Employee Benefits</b>	<b>\$155,120.42</b>	<b>\$220,279.92</b>		<b>\$375,400.34</b>
500 <u>Other Purchased Services</u>				
530 Communications	2,908.59	5,663.10		8,571.69
580 Travel		817.24		817.24
<b>Total Other Purchased Services</b>	<b>\$2,908.59</b>	<b>\$6,480.34</b>		<b>\$9,388.93</b>
600 <u>Supplies</u>				
610 General Supplies	1,996.09	3,771.80		5,767.89
<b>Total Supplies</b>	<b>\$1,996.09</b>	<b>\$3,771.80</b>		<b>\$5,767.89</b>
800 <u>Other Objects</u>				
810 Dues and Fees	126.72	1,072.28		1,199.00
<b>Total Other Objects</b>	<b>\$126.72</b>	<b>\$1,072.28</b>		<b>\$1,199.00</b>
<b>Total 2380 Office of the Principal Services</b>	<b>\$397,934.75</b>	<b>\$591,230.20</b>		<b>\$989,164.95</b>

LEA : 127045653      New Brighton Area SD

Printed 12/1/2020 10:03:43 AM

General Fund (10)

2400 Support Services – Pupil Health	<u>Elementary</u>	<u>Secondary</u>	<u>Federal</u>	<u>Total</u>
100 <u>Personnel Services – Salaries</u>				
100 Personnel Services – Salaries				139,334.86
Total Personnel Services – Salaries				\$139,334.86
200 <u>Personnel Services – Employee Benefits</u>				
210 Group Insurance – Contracted Provider				24,579.36
220 Social Security Contributions				9,998.18
230 PSERS Retirement Contributions				46,805.82
250 Unemployment Compensation				239.01
260 Workers' Compensation				887.13
Total Personnel Services – Employee Benefits				\$82,509.50
300 <u>Purchased Professional and Technical Services</u>				
329 Professional Educational Services – Other				17,941.93
330 Other Professional Services				28,800.78
Total Purchased Professional and Technical Services				\$46,742.71
600 <u>Supplies</u>				
610 General Supplies				2,708.81
Total Supplies				\$2,708.81
Total 2400 Support Services – Pupil Health				\$271,295.88

LEA : 127045653      New Brighton Area SD

Printed 12/1/2020 10:03:43 AM

General Fund (10)				
2420 Medical Services	<u>Elementary</u>	<u>Secondary</u>	<u>Federal</u>	<u>Total</u>
100 <u>Personnel Services – Salaries</u>				
100 Personnel Services – Salaries				139,334.86
Total Personnel Services – Salaries				\$139,334.86
200 <u>Personnel Services – Employee Benefits</u>				
210 Group Insurance – Contracted Provider				24,579.36
220 Social Security Contributions				9,998.18
230 PSERS Retirement Contributions				46,805.82
250 Unemployment Compensation				239.01
260 Workers' Compensation				887.13
Total Personnel Services – Employee Benefits				\$82,509.50
300 <u>Purchased Professional and Technical Services</u>				
329 Professional Educational Services – Other				17,941.93
330 Other Professional Services				26,820.78
Total Purchased Professional and Technical Services				\$44,762.71
600 <u>Supplies</u>				
610 General Supplies				2,284.81
Total Supplies				\$2,284.81
Total 2420 Medical Services				\$268,891.88

LEA : 127045653     New Brighton Area SD

Printed 12/1/2020 10:03:43 AM

General Fund (10)

2430 Dental Services

	<u>Elementary</u>	<u>Secondary</u>	<u>Federal</u>	<u>Total</u>
300 <u>Purchased Professional and Technical Services</u>				
330 Other Professional Services				1,980.00
Total Purchased Professional and Technical Services				\$1,980.00
Total 2430 Dental Services				\$1,980.00

LEA : 127045653     New Brighton Area SD

Printed 12/1/2020 10:03:43 AM

General Fund (10)				
2490 Other Health Services	<u>Elementary</u>	<u>Secondary</u>	<u>Federal</u>	<u>Total</u>
600 <u>Supplies</u>				
610 General Supplies				424.00
Total Supplies				\$424.00
Total 2490 Other Health Services				\$424.00

LEA : 127045653      New Brighton Area SD

Printed 12/1/2020 10:03:43 AM

<b>General Fund (10)</b>				
<b>2500 Support Services – Business</b>	<b><u>Elementary</u></b>	<b><u>Secondary</u></b>	<b><u>Federal</u></b>	<b><u>Total</u></b>
<b>100 <u>Personnel Services – Salaries</u></b>				
100 Personnel Services – Salaries				180,489.00
<b>Total Personnel Services – Salaries</b>				<b>\$180,489.00</b>
<b>200 <u>Personnel Services – Employee Benefits</u></b>				
210 Group Insurance – Contracted Provider				43,002.12
220 Social Security Contributions				13,129.73
230 PSERS Retirement Contributions				60,593.64
250 Unemployment Compensation				240.02
260 Workers' Compensation				1,148.64
<b>Total Personnel Services – Employee Benefits</b>				<b>\$118,114.15</b>
<b>300 <u>Purchased Professional and Technical Services</u></b>				
330 Other Professional Services				16,767.03
<b>Total Purchased Professional and Technical Services</b>				<b>\$16,767.03</b>
<b>500 <u>Other Purchased Services</u></b>				
580 Travel				861.40
<b>Total Other Purchased Services</b>				<b>\$861.40</b>
<b>600 <u>Supplies</u></b>				
610 General Supplies				2,748.30
<b>Total Supplies</b>				<b>\$2,748.30</b>
<b>800 <u>Other Objects</u></b>				
810 Dues and Fees				4,861.14
<b>Total Other Objects</b>				<b>\$4,861.14</b>
<b>Total 2500 Support Services – Business</b>				<b>\$323,841.02</b>

LEA : 127045653      New Brighton Area SD

Printed 12/1/2020 10:03:43 AM

General Fund (10)				
2510 Fiscal Services	<u>Elementary</u>	<u>Secondary</u>	<u>Federal</u>	<u>Total</u>
100 <u>Personnel Services – Salaries</u>				
100 Personnel Services – Salaries				180,489.00
Total Personnel Services – Salaries				\$180,489.00
200 <u>Personnel Services – Employee Benefits</u>				
210 Group Insurance – Contracted Provider				43,002.12
220 Social Security Contributions				13,129.73
230 PSERS Retirement Contributions				60,593.64
250 Unemployment Compensation				240.02
260 Workers' Compensation				1,148.64
Total Personnel Services – Employee Benefits				\$118,114.15
300 <u>Purchased Professional and Technical Services</u>				
330 Other Professional Services				16,767.03
Total Purchased Professional and Technical Services				\$16,767.03
500 <u>Other Purchased Services</u>				
580 Travel				861.40
Total Other Purchased Services				\$861.40
600 <u>Supplies</u>				
610 General Supplies				2,748.30
Total Supplies				\$2,748.30
800 <u>Other Objects</u>				
810 Dues and Fees				4,861.14
Total Other Objects				\$4,861.14
Total 2510 Fiscal Services				\$323,841.02



LEA : 127045653      New Brighton Area SD

Printed 12/1/2020 10:03:43 AM

General Fund (10)				
2511 Supervision of Fiscal Services - Head of Component	<u>Elementary</u>	<u>Secondary</u>	<u>Federal</u>	<u>Total</u>
100 <u>Personnel Services – Salaries</u>				
100 Personnel Services – Salaries				180,489.00
Total Personnel Services – Salaries				\$180,489.00
200 <u>Personnel Services – Employee Benefits</u>				
210 Group Insurance – Contracted Provider				43,002.12
220 Social Security Contributions				13,129.73
230 PSERS Retirement Contributions				60,593.64
250 Unemployment Compensation				240.02
260 Workers' Compensation				1,148.64
Total Personnel Services – Employee Benefits				\$118,114.15
300 <u>Purchased Professional and Technical Services</u>				
330 Other Professional Services				16,767.03
Total Purchased Professional and Technical Services				\$16,767.03
500 <u>Other Purchased Services</u>				
580 Travel				861.40
Total Other Purchased Services				\$861.40
600 <u>Supplies</u>				
610 General Supplies				2,748.30
Total Supplies				\$2,748.30
800 <u>Other Objects</u>				
810 Dues and Fees				3,194.39
Total Other Objects				\$3,194.39
Total 2511 Supervision of Fiscal Services - Head of Component				\$322,174.27

LEA : 127045653     New Brighton Area SD

Printed 12/1/2020 10:03:43 AM

General Fund (10)				
2519 Other Fiscal Services	<u>Elementary</u>	<u>Secondary</u>	<u>Federal</u>	<u>Total</u>
800 <u>Other Objects</u>				
810 Dues and Fees				1,666.75
Total Other Objects				\$1,666.75
Total 2519 Other Fiscal Services				\$1,666.75

LEA : 127045653      New Brighton Area SD

Printed 12/1/2020 10:03:43 AM

General Fund (10)				
2600 Operation and Maintenance of Plant Services	<u>Elementary</u>	<u>Secondary</u>	<u>Federal</u>	<u>Total</u>
100 <u>Personnel Services – Salaries</u>				
100 Personnel Services – Salaries				734,128.25
Total Personnel Services – Salaries				\$734,128.25
200 <u>Personnel Services – Employee Benefits</u>				
210 Group Insurance – Contracted Provider				230,844.53
220 Social Security Contributions				52,788.08
230 PSERS Retirement Contributions				242,532.73
250 Unemployment Compensation				1,445.06
260 Workers' Compensation				(4,905.86)
Total Personnel Services – Employee Benefits				\$522,704.54
300 <u>Purchased Professional and Technical Services</u>				
390 Other Purchased Professional and Technical Services				127,392.66
Total Purchased Professional and Technical Services				\$127,392.66
400 <u>Purchased Property Services</u>				
410 Cleaning Services				13,021.18
420 Utility Services				46,765.15
430 Repairs and Maintenance Services				148,651.08
440 Rentals				414.02
490 Other Purchased Property Services				7,355.00
Total Purchased Property Services				\$216,206.43
500 <u>Other Purchased Services</u>				
523 General Property and Liability Insurance				109,072.00
530 Communications			3,148.62	29,977.97
Total Other Purchased Services			\$3,148.62	\$139,049.97
600 <u>Supplies</u>				
610 General Supplies	54,307.95	105,421.30	37,368.70	197,097.95
620 Energy				378,221.58
Total Supplies	\$54,307.95	\$105,421.30	\$37,368.70	\$575,319.53
700 <u>Property</u>				
762 Capitalized Equipment - Replacement				18,449.10
790 Other Property				3,800.00
Total Property				\$22,249.10
800 <u>Other Objects</u>				
810 Dues and Fees				3,322.72
Total Other Objects				\$3,322.72
Total 2600 Operation and Maintenance of Plant Services	\$54,307.95	\$105,421.30	\$40,517.32	\$2,340,373.20

LEA : 127045653      New Brighton Area SD

Printed 12/1/2020 10:03:43 AM

General Fund (10)

2610 Supervision of Operation and Maintenance of Plant Services	<u>Elementary</u>	<u>Secondary</u>	<u>Federal</u>	<u>Total</u>
100 <u>Personnel Services – Salaries</u>				
100 Personnel Services – Salaries				76,500.00
Total Personnel Services – Salaries				\$76,500.00
200 <u>Personnel Services – Employee Benefits</u>				
210 Group Insurance – Contracted Provider				17,598.48
220 Social Security Contributions				5,636.88
230 PSERS Retirement Contributions				26,231.76
250 Unemployment Compensation				80.00
260 Workers' Compensation				497.28
Total Personnel Services – Employee Benefits				\$50,044.40
Total 2610 Supervision of Operation and Maintenance of Plant Services				\$126,544.40

LEA : 127045653      New Brighton Area SD

Printed 12/1/2020 10:03:43 AM

General Fund (10)

2611 Supervision of Operation and Maintenance of Plant Services – Head of Component	<u>Elementary</u>	<u>Secondary</u>	<u>Federal</u>	<u>Total</u>
100 <u>Personnel Services – Salaries</u>				
100 Personnel Services – Salaries				76,500.00
Total Personnel Services – Salaries				\$76,500.00
200 <u>Personnel Services – Employee Benefits</u>				
210 Group Insurance – Contracted Provider				17,598.48
220 Social Security Contributions				5,636.88
230 PSERS Retirement Contributions				26,231.76
250 Unemployment Compensation				80.00
260 Workers' Compensation				497.28
Total Personnel Services – Employee Benefits				\$50,044.40
Total 2611 Supervision of Operation and Maintenance of Plant Services – Head of Component				\$126,544.40

LEA : 127045653      New Brighton Area SD

Printed 12/1/2020 10:03:43 AM

General Fund (10)				
2620 Operation of Buildings Services	<u>Elementary</u>	<u>Secondary</u>	<u>Federal</u>	<u>Total</u>
100 <u>Personnel Services – Salaries</u>				
100 Personnel Services – Salaries				578,198.26
Total Personnel Services – Salaries				\$578,198.26
200 <u>Personnel Services – Employee Benefits</u>				
210 Group Insurance – Contracted Provider				177,999.29
220 Social Security Contributions				41,503.56
230 PSERS Retirement Contributions				190,360.51
250 Unemployment Compensation				1,234.29
260 Workers' Compensation				(5,895.01)
Total Personnel Services – Employee Benefits				\$405,202.64
300 <u>Purchased Professional and Technical Services</u>				
390 Other Purchased Professional and Technical Services				102,392.66
Total Purchased Professional and Technical Services				\$102,392.66
400 <u>Purchased Property Services</u>				
410 Cleaning Services				13,021.18
420 Utility Services				46,765.15
430 Repairs and Maintenance Services				124,548.31
440 Rentals				414.02
490 Other Purchased Property Services				7,355.00
Total Purchased Property Services				\$192,103.66
500 <u>Other Purchased Services</u>				
523 General Property and Liability Insurance				109,072.00
530 Communications			3,148.62	29,977.97
Total Other Purchased Services			\$3,148.62	\$139,049.97
600 <u>Supplies</u>				
610 General Supplies	50,106.81	97,266.17	37,368.70	184,741.68
620 Energy				374,944.06
Total Supplies	\$50,106.81	\$97,266.17	\$37,368.70	\$559,685.74
700 <u>Property</u>				
762 Capitalized Equipment - Replacement				18,449.10
790 Other Property				3,800.00
Total Property				\$22,249.10
800 <u>Other Objects</u>				
810 Dues and Fees				3,322.72
Total Other Objects				\$3,322.72
Total 2620 Operation of Buildings Services	\$50,106.81	\$97,266.17	\$40,517.32	\$2,002,204.75

LEA : 127045653      New Brighton Area SD

Printed 12/1/2020 10:03:43 AM

General Fund (10)				
2630 Care and Upkeep of Grounds Services	<u>Elementary</u>	<u>Secondary</u>	<u>Federal</u>	<u>Total</u>
100 <u>Personnel Services – Salaries</u>				
100 Personnel Services – Salaries				79,429.99
Total Personnel Services – Salaries				\$79,429.99
200 <u>Personnel Services – Employee Benefits</u>				
210 Group Insurance – Contracted Provider				35,246.76
220 Social Security Contributions				5,647.64
230 PSERS Retirement Contributions				25,940.46
250 Unemployment Compensation				130.77
260 Workers' Compensation				491.87
Total Personnel Services – Employee Benefits				\$67,457.50
400 <u>Purchased Property Services</u>				
430 Repairs and Maintenance Services				20,020.34
Total Purchased Property Services				\$20,020.34
600 <u>Supplies</u>				
610 General Supplies	3,389.25	6,579.12		9,968.37
Total Supplies	\$3,389.25	\$6,579.12		\$9,968.37
Total 2630 Care and Upkeep of Grounds Services	\$3,389.25	\$6,579.12		\$176,876.20

LEA : 127045653     New Brighton Area SD

Printed 12/1/2020 10:03:43 AM

General Fund (10)

2650 Vehicle Operation and Maintenance Services (Other Than Student Transportation Vehicles)	<u>Elementary</u>	<u>Secondary</u>	<u>Federal</u>	<u>Total</u>
400 <u>Purchased Property Services</u>				
430 Repairs and Maintenance Services				4,082.43
Total Purchased Property Services				\$4,082.43
600 <u>Supplies</u>				
610 General Supplies	811.89	1,576.01		2,387.90
620 Energy				3,277.52
Total Supplies	\$811.89	\$1,576.01		\$5,665.42
Total 2650 Vehicle Operation and Maintenance Services (Other Than Student Transportation Vehicles)	\$811.89	\$1,576.01		\$9,747.85



LEA : 127045653      New Brighton Area SD

Printed 12/1/2020 10:03:43 AM

General Fund (10)

2660 Safety and Security Services

<u>Elementary</u>	<u>Secondary</u>	<u>Federal</u>	<u>Total</u>
-------------------	------------------	----------------	--------------

300 Purchased Professional and Technical Services

390 Other Purchased Professional and Technical Services			25,000.00
---	--	--	-----------

<b>Total Purchased Professional and Technical Services</b>			<b>\$25,000.00</b>
--	--	--	--------------------

<b>Total 2660 Safety and Security Services</b>			<b>\$25,000.00</b>
--	--	--	--------------------

LEA : 127045653     New Brighton Area SD

Printed 12/1/2020 10:03:43 AM

General Fund (10)

2700 Student Transportation Services	<u>Elementary</u>	<u>Secondary</u>	<u>Federal</u>	<u>Total</u>
500 <u>Other Purchased Services</u>				
513 Contracted Carriers				1,143,623.62
516 Student Transportation Services From the IU				3,851.90
Total Other Purchased Services				\$1,147,475.52
Total 2700 Student Transportation Services				\$1,147,475.52

<u>Elementary</u>	<u>Secondary</u>	<u>Federal</u>	<u>Total</u>
-------------------	------------------	----------------	--------------

[illegible]

1,118,598.62

3,851.90

**\$1,122,450.52**

**\$1,122,450.52**

LEA : 127045653     New Brighton Area SD

Printed 12/1/2020 10:03:43 AM

General Fund (10)

2750 Nonpublic Transportation	<u>Elementary</u>	<u>Secondary</u>	<u>Federal</u>	<u>Total</u>
500 <u>Other Purchased Services</u>				
513 Contracted Carriers				25,025.00
Total Other Purchased Services				\$25,025.00
Total 2750 Nonpublic Transportation				\$25,025.00

LEA : 127045653      New Brighton Area SD

Printed 12/1/2020 10:03:43 AM

General Fund (10)				
2800 Support Services – Central	<u>Elementary</u>	<u>Secondary</u>	<u>Federal</u>	<u>Total</u>
100 <u>Personnel Services – Salaries</u>				
100 Personnel Services – Salaries				117,726.00
Total Personnel Services – Salaries				\$117,726.00
200 <u>Personnel Services – Employee Benefits</u>				
210 Group Insurance – Contracted Provider				35,277.24
220 Social Security Contributions				8,635.62
230 PSERS Retirement Contributions				39,072.26
250 Unemployment Compensation				279.99
260 Workers' Compensation				740.51
Total Personnel Services – Employee Benefits				\$84,005.62
300 <u>Purchased Professional and Technical Services</u>				
340 Technical Services				59,509.61
Total Purchased Professional and Technical Services				\$59,509.61
400 <u>Purchased Property Services</u>				
430 Repairs and Maintenance Services				990.70
Total Purchased Property Services				\$990.70
600 <u>Supplies</u>				
610 General Supplies				37,389.00
650 Supplies & Fees – Technology Related				138,731.92
Total Supplies				\$176,120.92
700 <u>Property</u>				
758 Capitalized Technology Software - Original				2,878.00
768 Capitalized Technology Software - Replacement				12,603.00
Total Property				\$15,481.00
Total 2800 Support Services – Central				\$453,833.85

LEA : 127045653      New Brighton Area SD

Printed 12/1/2020 10:03:43 AM

General Fund (10)				
2840 Data Processing Services	<u>Elementary</u>	<u>Secondary</u>	<u>Federal</u>	<u>Total</u>
100 <u>Personnel Services – Salaries</u>				
100 Personnel Services – Salaries				117,726.00
Total Personnel Services – Salaries				\$117,726.00
200 <u>Personnel Services – Employee Benefits</u>				
210 Group Insurance – Contracted Provider				35,277.24
220 Social Security Contributions				8,635.62
230 PSERS Retirement Contributions				39,072.26
250 Unemployment Compensation				279.99
260 Workers' Compensation				740.51
Total Personnel Services – Employee Benefits				\$84,005.62
300 <u>Purchased Professional and Technical Services</u>				
340 Technical Services				59,509.61
Total Purchased Professional and Technical Services				\$59,509.61
400 <u>Purchased Property Services</u>				
430 Repairs and Maintenance Services				990.70
Total Purchased Property Services				\$990.70
600 <u>Supplies</u>				
610 General Supplies				37,389.00
650 Supplies & Fees – Technology Related				138,731.92
Total Supplies				\$176,120.92
700 <u>Property</u>				
758 Capitalized Technology Software - Original				2,878.00
768 Capitalized Technology Software - Replacement				12,603.00
Total Property				\$15,481.00
Total 2840 Data Processing Services				\$453,833.85

LEA : 127045653      New Brighton Area SD

Printed 12/1/2020 10:03:43 AM

General Fund (10)

2900 Other Support Services	<u>Elementary</u>	<u>Secondary</u>	<u>Federal</u>	<u>Total</u>
500 <u>Other Purchased Services</u>				
595 IU Payments By Withholding				6,832.13
Total Other Purchased Services				\$6,832.13
Total 2900 Other Support Services				\$6,832.13

LEA : 127045653     New Brighton Area SD

Printed 12/1/2020 10:03:43 AM

General Fund (10)

2910 Support Services Not Listed Elsewhere In the 2000 Series

<u>Elementary</u>	<u>Secondary</u>	<u>Federal</u>	<u>Total</u>
-------------------	------------------	----------------	--------------

500 Other Purchased Services

595 IU Payments By Withholding			6,832.13
--------------------------------	--	--	----------

<b>Total Other Purchased Services</b>			<b>\$6,832.13</b>
---------------------------------------	--	--	-------------------

<b>Total 2910 Support Services Not Listed Elsewhere In the 2000 Series</b>			<b>\$6,832.13</b>
--	--	--	-------------------



LEA : 127045653      New Brighton Area SD

Printed 12/1/2020 10:03:48 AM

<b>General Fund (10)</b>	
<b>3000 Operation of Non-Instructional Services</b>	<b><u>Total</u></b>
<b>100 <u>Personnel Services – Salaries</u></b>	
100 Personnel Services – Salaries	292,437.10
<b>Total Personnel Services – Salaries</b>	<b>\$292,437.10</b>
<b>200 <u>Personnel Services – Employee Benefits</u></b>	
210 Group Insurance – Contracted Provider	967.56
220 Social Security Contributions	22,135.53
230 PSERS Retirement Contributions	81,834.63
250 Unemployment Compensation	1,145.91
260 Workers' Compensation	1,901.05
<b>Total Personnel Services – Employee Benefits</b>	<b>\$107,984.68</b>
<b>300 <u>Purchased Professional and Technical Services</u></b>	
330 Other Professional Services	36,647.50
350 Security / Safety Services	17,030.00
390 Other Purchased Professional and Technical Services	8,472.83
<b>Total Purchased Professional and Technical Services</b>	<b>\$62,150.33</b>
<b>400 <u>Purchased Property Services</u></b>	
430 Repairs and Maintenance Services	35,465.82
440 Rentals	2,260.00
490 Other Purchased Property Services	9,208.40
<b>Total Purchased Property Services</b>	<b>\$46,934.22</b>
<b>500 <u>Other Purchased Services</u></b>	
510 Student Transportation Services	32,806.20
520 Insurance – General	11,300.00
580 Travel	1,059.44
<b>Total Other Purchased Services</b>	<b>\$45,165.64</b>
<b>600 <u>Supplies</u></b>	
610 General Supplies	78,348.08
<b>Total Supplies</b>	<b>\$78,348.08</b>
<b>700 <u>Property</u></b>	
762 Capitalized Equipment - Replacement	7,456.00
<b>Total Property</b>	<b>\$7,456.00</b>
<b>800 <u>Other Objects</u></b>	
810 Dues and Fees	3,655.00
860 Grants To Municipal and Community Service Organizations	20,000.00
890 Miscellaneous Expenditures	10,338.47
<b>Total Other Objects</b>	<b>\$33,993.47</b>
<b>Total 3000 Operation of Non-Instructional Services</b>	<b>\$674,469.52</b>

LEA : 127045653      New Brighton Area SD

Printed 12/1/2020 10:03:48 AM

General Fund (10)				
3200 Student Activities				
	<u>Elementary</u>	<u>Secondary</u>	<u>Federal</u>	<u>Total</u>
100 <u>Personnel Services – Salaries</u>				
100 Personnel Services – Salaries				222,118.94
Total Personnel Services – Salaries				\$222,118.94
200 <u>Personnel Services – Employee Benefits</u>				
220 Social Security Contributions				16,946.58
230 PSERS Retirement Contributions				65,706.15
250 Unemployment Compensation				853.37
260 Workers' Compensation				1,443.92
Total Personnel Services – Employee Benefits				\$84,950.02
300 <u>Purchased Professional and Technical Services</u>				
330 Other Professional Services				36,647.50
350 Security / Safety Services				17,030.00
390 Other Purchased Professional and Technical Services				6,575.06
Total Purchased Professional and Technical Services				\$60,252.56
400 <u>Purchased Property Services</u>				
430 Repairs and Maintenance Services				14,475.59
440 Rentals				2,260.00
Total Purchased Property Services				\$16,735.59
500 <u>Other Purchased Services</u>				
510 Student Transportation Services				32,806.20
520 Insurance – General				11,300.00
580 Travel				1,059.44
Total Other Purchased Services				\$45,165.64
600 <u>Supplies</u>				
610 General Supplies				73,981.28
Total Supplies				\$73,981.28
700 <u>Property</u>				
762 Capitalized Equipment - Replacement				7,456.00
Total Property				\$7,456.00
800 <u>Other Objects</u>				
810 Dues and Fees				3,655.00
890 Miscellaneous Expenditures				10,338.47
Total Other Objects				\$13,993.47
Total 3200 Student Activities				\$524,653.50

LEA : 127045653      New Brighton Area SD

Printed 12/1/2020 10:03:48 AM

General Fund (10)				
3300 Community Services	<u>Elementary</u>	<u>Secondary</u>	<u>Federal</u>	<u>Total</u>
100 <u>Personnel Services – Salaries</u>				
100 Personnel Services – Salaries				70,318.16
Total Personnel Services – Salaries				\$70,318.16
200 <u>Personnel Services – Employee Benefits</u>				
210 Group Insurance – Contracted Provider				967.56
220 Social Security Contributions				5,188.95
230 PSERS Retirement Contributions				16,128.48
250 Unemployment Compensation				292.54
260 Workers' Compensation				457.13
Total Personnel Services – Employee Benefits				\$23,034.66
300 <u>Purchased Professional and Technical Services</u>				
390 Other Purchased Professional and Technical Services				1,897.77
Total Purchased Professional and Technical Services				\$1,897.77
400 <u>Purchased Property Services</u>				
430 Repairs and Maintenance Services				20,990.23
490 Other Purchased Property Services				9,208.40
Total Purchased Property Services				\$30,198.63
600 <u>Supplies</u>				
610 General Supplies			500.00	4,366.80
Total Supplies			\$500.00	\$4,366.80
800 <u>Other Objects</u>				
860 Grants To Municipal and Community Service Organizations				20,000.00
Total Other Objects				\$20,000.00
Total 3300 Community Services			\$500.00	\$149,816.02

General Fund (10)

4000 Facilities Acquisition, Construction and Improvement Services		<u>Total</u>
700 <u>Property</u>		
752 Capital Equipment – Original and Additional		6,798.00
Total Property		\$6,798.00
Total 4000 Facilities Acquisition, Construction and Improvement Services		\$6,798.00

LEA : 127045653     New Brighton Area SD

Printed 12/1/2020 10:03:55 AM

General Fund (10)

4600 Existing Building Improvement Services	<u>Elementary</u>	<u>Secondary</u>	<u>Federal</u>	<u>Total</u>
700 <u>Property</u>				
752 Capital Equipment – Original and Additional				6,798.00
Total Property				\$6,798.00
Total 4600 Existing Building Improvement Services				\$6,798.00

LEA : 127045653     New Brighton Area SD

Printed 12/1/2020 10:04:11 AM

General Fund (10)

5000 Other Expenditures and Financing Uses		<u>Total</u>
800 <u>Other Objects</u>		
830 Interest		153,390.19
Total Other Objects		\$153,390.19
900 <u>Other Uses of Funds</u>		
910 Redemption of Principal		1,553,530.54
Total Other Uses of Funds		\$1,553,530.54
Total 5000 Other Expenditures and Financing Uses		\$1,706,920.73

LEA : 127045653     New Brighton Area SD

Printed 12/1/2020 10:04:11 AM

General Fund (10)

5100 Debt Service / Other Expenditures and Financing Uses	<u>Elementary</u>	<u>Secondary</u>	<u>Federal</u>	<u>Total</u>
800 <u>Other Objects</u>				
830 Interest				153,390.19
Total Other Objects				\$153,390.19
900 <u>Other Uses of Funds</u>				
910 Redemption of Principal				1,553,530.54
Total Other Uses of Funds				\$1,553,530.54
Total 5100 Debt Service / Other Expenditures and Financing Uses				\$1,706,920.73

LEA : 127045653     New Brighton Area SD

Printed 12/1/2020 10:04:11 AM

General Fund (10)				
5110 Debt Service	<u>Elementary</u>	<u>Secondary</u>	<u>Federal</u>	<u>Total</u>
800 <u>Other Objects</u>				
830 Interest				153,390.19
Total Other Objects				\$153,390.19
900 <u>Other Uses of Funds</u>				
910 Redemption of Principal				1,553,530.54
Total Other Uses of Funds				\$1,553,530.54
Total 5110 Debt Service				\$1,706,920.73



LEA : 127045653      New Brighton Area SD

Printed 12/1/2020 10:04:16 AM

Capital Reserve Fund - § 1431 (32)	
5000 Other Expenditures and Financing Uses	<u>Total</u>
900 <u>Other Uses of Funds</u>	
990 Miscellaneous Other Uses of Funds	615.00
Total Other Uses of Funds	\$615.00
Total 5000 Other Expenditures and Financing Uses	\$615.00

LEA : 127045653     New Brighton Area SD

Printed 12/1/2020 10:04:16 AM

Capital Reserve Fund - § 1431 (32)

5100 Debt Service / Other Expenditures and Financing Uses	<u>Elementary</u>	<u>Secondary</u>	<u>Federal</u>	<u>Total</u>
900 <u>Other Uses of Funds</u>				
990 Miscellaneous Other Uses of Funds				615.00
Total Other Uses of Funds				\$615.00
Total 5100 Debt Service / Other Expenditures and Financing Uses				\$615.00

LEA : 127045653     New Brighton Area SD

Printed 12/1/2020 10:04:16 AM

Capital Reserve Fund - § 1431 (32)

5110 Debt Service	<u>Elementary</u>	<u>Secondary</u>	<u>Federal</u>	<u>Total</u>
900 <u>Other Uses of Funds</u>				
990 Miscellaneous Other Uses of Funds				615.00
<b>Total Other Uses of Funds</b>				<b>\$615.00</b>
<b>Total 5110 Debt Service</b>				<b>\$615.00</b>

LEA : 127045653      New Brighton Area SD

Printed 12/1/2020 10:03:59 AM

Other Capital Projects Fund (39)

4000 Facilities Acquisition, Construction and Improvement Services

Total

700 <u>Property</u>	
752 Capital Equipment – Original and Additional	120,639.00
<b>Total Property</b>	<b>\$120,639.00</b>
<b>Total 4000 Facilities Acquisition, Construction and Improvement Services</b>	<b>\$120,639.00</b>

<u>Elementary</u>	<u>Secondary</u>	<u>Federal</u>	<u>Total</u>
-------------------	------------------	----------------	--------------

<u>Elementary</u>	<u>Secondary</u>	<u>Federal</u>	<u>Total</u>
-------------------	------------------	----------------	--------------

<u>Elementary</u>	<u>Secondary</u>	<u>Federal</u>	<u>Total</u>
-------------------	------------------	----------------	--------------

120,639.00

**\$120,639.00**

**\$120,639.00**

LEA : 127045653     New Brighton Area SD

Printed 12/1/2020 10:04:36 AM

	<u>General Fund(10)</u>	<u>Student Sponsored Activity Fund(21)</u>	<u>Public Purpose Trust(27)</u>	<u>Other Compt Approved (28)</u>	<u>Athletic / Activity(29)</u>
<b>1000 <u>Instruction</u></b>					
1100 Regular Programs - Elementary / Secondary	10,991,606.68				
1200 Special Programs - Elementary / Secondary	3,568,457.47				
1300 Vocational Education	1,258,537.64				
1400 Other Instructional Programs - Elementary / Secondary	112,336.74				
1500 Nonpublic School Programs	4,990.60				
<b>Total Instruction</b>	<b>\$15,935,929.13</b>				
<b>2000 <u>Support Services</u></b>					
2100 Support Services - Students	895,893.04				
2200 Support Services - Instructional Staff	518,272.78				
2300 Support Services - Administration	1,464,844.16				
2400 Support Services - Pupil Health	271,295.88				
2500 Support Services - Business	323,841.02				
2600 Operation and Maintenance of Plant Services	2,340,373.20				
2700 Student Transportation Services	1,147,475.52				
2800 Support Services - Central	453,833.85				
2900 Other Support Services	6,832.13				
<b>Total Support Services</b>	<b>\$7,422,661.58</b>				
<b>3000 <u>Operation of Non-Instructional Services</u></b>					
3200 Student Activities	524,653.50				
3300 Community Services	149,816.02				
<b>Total Operation of Non-Instructional Services</b>	<b>\$674,469.52</b>				
<b>4000 <u>Facilities Acquisition, Construction and Improvement Services</u></b>					
4100 Site Acquisition Services - Original and Additional					
4600 Existing Building Improvement Services	6,798.00				
<b>Total Facilities Acquisition, Construction and Improvement Services</b>	<b>\$6,798.00</b>				
<b>5000 <u>Other Expenditures and Financing Uses</u></b>					
5100 Debt Service / Other Expenditures and Financing Uses	1,706,920.73				
<b>Total Other Expenditures and Financing Uses</b>	<b>\$1,706,920.73</b>				
<b>TOTAL ACTUAL EXPENDITURES &amp; OTHER FINANCING USES</b>	<b>\$25,746,778.96</b>				

LEA : 127045653     New Brighton Area SD

Printed 12/1/2020 10:04:36 AM

	<u>Capital Reserve (690.1850)(31)</u>	<u>Capital Reserve (1431)(32)</u>	<u>Other Capital Projects Fund(39)</u>	<u>Debt Service(40)</u>	<u>Permanent(90)</u>
<b>1000 <u>Instruction</u></b>					
1100 Regular Programs - Elementary / Secondary					
1200 Special Programs - Elementary / Secondary					
1300 Vocational Education					
1400 Other Instructional Programs - Elementary / Secondary					
1500 Nonpublic School Programs					
<b>Total Instruction</b>					
<b>2000 <u>Support Services</u></b>					
2100 Support Services - Students					
2200 Support Services - Instructional Staff					
2300 Support Services - Administration					
2400 Support Services - Pupil Health					
2500 Support Services - Business					
2600 Operation and Maintenance of Plant Services					
2700 Student Transportation Services					
2800 Support Services - Central					
2900 Other Support Services					
<b>Total Support Services</b>					
<b>3000 <u>Operation of Non-Instructional Services</u></b>					
3200 Student Activities					
3300 Community Services					
<b>Total Operation of Non-Instructional Services</b>					
<b>4000 <u>Facilities Acquisition, Construction and Improvement Services</u></b>					
4100 Site Acquisition Services - Original and Additional			120,639.00		
4600 Existing Building Improvement Services					
<b>Total Facilities Acquisition, Construction and Improvement Services</b>			<b>\$120,639.00</b>		
<b>5000 <u>Other Expenditures and Financing Uses</u></b>					
5100 Debt Service / Other Expenditures and Financing Uses		615.00			
<b>Total Other Expenditures and Financing Uses</b>		<b>\$615.00</b>			
<b>TOTAL ACTUAL EXPENDITURES &amp; OTHER FINANCING USES</b>		<b>\$615.00</b>	<b>\$120,639.00</b>		

LEA : 127045653     New Brighton Area SD

Printed 12/1/2020 10:04:36 AM

	<u>Total</u>
<b>1000 <u>Instruction</u></b>	
1100 Regular Programs - Elementary / Secondary	10,991,606.68
1200 Special Programs - Elementary / Secondary	3,568,457.47
1300 Vocational Education	1,258,537.64
1400 Other Instructional Programs - Elementary / Secondary	112,336.74
1500 Nonpublic School Programs	4,990.60
<b>Total Instruction</b>	<b>\$15,935,929.13</b>
<b>2000 <u>Support Services</u></b>	
2100 Support Services - Students	895,893.04
2200 Support Services - Instructional Staff	518,272.78
2300 Support Services - Administration	1,464,844.16
2400 Support Services - Pupil Health	271,295.88
2500 Support Services - Business	323,841.02
2600 Operation and Maintenance of Plant Services	2,340,373.20
2700 Student Transportation Services	1,147,475.52
2800 Support Services - Central	453,833.85
2900 Other Support Services	6,832.13
<b>Total Support Services</b>	<b>\$7,422,661.58</b>
<b>3000 <u>Operation of Non-Instructional Services</u></b>	
3200 Student Activities	524,653.50
3300 Community Services	149,816.02
<b>Total Operation of Non-Instructional Services</b>	<b>\$674,469.52</b>
<b>4000 <u>Facilities Acquisition, Construction and Improvement Services</u></b>	
4100 Site Acquisition Services - Original and Additional	120,639.00
4600 Existing Building Improvement Services	6,798.00
<b>Total Facilities Acquisition, Construction and Improvement Services</b>	<b>\$127,437.00</b>
<b>5000 <u>Other Expenditures and Financing Uses</u></b>	
5100 Debt Service / Other Expenditures and Financing Uses	1,707,535.73
<b>Total Other Expenditures and Financing Uses</b>	<b>\$1,707,535.73</b>
<b>TOTAL ACTUAL EXPENDITURES &amp; OTHER FINANCING USES</b>	<b>\$25,868,032.96</b>



LEA : 127045653      New Brighton Area SD

Printed 12/1/2020 10:04:46 AM

PSERS Salary Data (Salary Data should relate to the General Fund only)

Amount	Description	Amount
	Total Salary Base for salaries subject to PSERS withholding	10,663,878.21
	Total Federally Funded salaries subject to PSERS withholding	315,511.48

Title I Expenditure Data

Amount	Description	Amount
	Expenditures Funded with Current Title I Funds	493,085.16
	Expenditures Funded with Carry over Title I Funds	
Total Title I Expenditure Data		\$493,085.16

Benefits for Staff Relative to Collective Bargaining Agreements

	OBJECT	COVERED	NOT COVERED	TOTAL
10 General Fund	No Self Insurance data to report			
	211 Medical Insurance	2,049,774.97	85,407.29	2,135,182.26
	212 Dental Insurance	73,195.41	2,263.78	75,459.19
	215 Eye Care Insurance	18,449.78	570.62	19,020.40
	216 Prescription Insurance			
	271 Self-Insurance Medical Benefits			
	272 Self-Insurance Dental Benefits			
	275 Self-Insurance Eye Care Benefits			
	276 Self-Insurance Prescription Benefits			
	FUND TOTAL	\$2,141,420.16	\$88,241.69	\$2,229,661.85
50 Enterprise Fund	No Self Insurance data to report			
	211 Medical Insurance			
	212 Dental Insurance			
	215 Eye Care Insurance			
	216 Prescription Insurance			
	271 Self-Insurance Medical Benefits			
	272 Self-Insurance Dental Benefits			
	275 Self-Insurance Eye Care Benefits			
	276 Self-Insurance Prescription Benefits			
	FUND TOTAL			
60 Internal Service Fund	No Self Insurance data to report			
	211 Medical Insurance			
	212 Dental Insurance			
	215 Eye Care Insurance			
	216 Prescription Insurance			
	271 Self-Insurance Medical Benefits			
	272 Self-Insurance Dental Benefits			
	275 Self-Insurance Eye Care Benefits			
	276 Self-Insurance Prescription Benefits			
	FUND TOTAL			
Total of All Funds		\$2,141,420.16	\$88,241.69	\$2,229,661.85

LEA : 127045653      New Brighton Area SD

Printed 12/1/2020 10:04:54 AM

Function	Special Education (Prior Year)	Nonspecial Education (Prior Year)	Total (Prior Year)	Special Education (Current Year)	Nonspecial Education (Current Year)	Total (Current Year)
2120 Guidance Services	47,019.21	423,173.19	470,192.40	47,306.13	425,755.14	473,061.27
2140 Psychological Services	86,730.12	9,636.68	96,366.80	120,454.34	13,383.81	133,838.15
2150 Speech Pathology and Audiology Services	82,177.55	20,544.38	102,721.93	87,899.88	21,974.96	109,874.84
2160 Social Work Services	16,922.04	152,298.35	169,220.39	17,911.88	161,206.90	179,118.78
2260 Instruction and Curriculum Development Services	162,230.33	108,153.54	270,383.87	169,866.56	100,517.31	270,383.87
2350 Legal and Accounting Services	5,198.10	20,792.40	25,990.50	7,267.32	29,069.27	36,336.59
2420 Medical Services	64,997.82	194,993.43	259,991.25	67,222.97	201,668.91	268,891.88
2440 Nursing Services						
2700 Student Transportation Services	425,609.66	699,407.80	1,125,017.46	455,918.00	691,557.52	1,147,475.52
Total	\$890,884.83	\$1,628,999.77	\$2,519,884.60	\$973,847.08	\$1,645,133.82	\$2,618,980.90

LEA : 127045653     New Brighton Area SD

Printed 12/1/2020 10:04:59 AM

(PRINCIPAL AMOUNTS ONLY)

**GOVERNMENTAL FUNDS/ ACTIVITIES**

	Short-Term Borrowing	General Obligation Bonds/Notes	Authority Building Obligations	Other Long-Term Debt	Other Post- Employment Benefits (OPEB)	Compensated Absences	Net Pension Liability	Total
1. Debt at Beginning of Fiscal Year		3,762,000.00		2,098,984.10	1,149,040.00		34,900,000.00	41,910,024.10
2. Additional Debt Incurred During Year					114,139.00			114,139.00
3. Retirements and Repayments		1,402,000.00		194,872.00	82,701.00		421,000.00	2,100,573.00
4. Debt at End of Fiscal Year		2,360,000.00		1,904,112.10	1,180,478.00		34,479,000.00	39,923,590.10
5. Accreted Interest at End Of Fiscal Year								
6. Total Debt and Accreted Interest		2,360,000.00		1,904,112.10	1,180,478.00		34,479,000.00	39,923,590.10
7. Current Portion P&I - Due within 1 year		127,540.01		216,092.00				343,632.01
8. Interest Paid during current fiscal year		92,106.86		61,283.46				153,390.32

(PRINCIPAL AMOUNTS ONLY)

**PROPRIETARY FUNDS**

- 1. Debt at Beginning of Fiscal Year
- 2. Additional Debt Incurred During Year
- 3. Retirements and Repayments
- 4. Debt at End of Fiscal Year
- 5. Accreted Interest at End Of Fiscal Year
- 6. Total Debt and Accreted Interest
- 7. Current Portion P&I - Due within 1 year
- 8. Interest Paid during current fiscal year

LEA : 127045653      New Brighton Area SD

Printed 12/1/2020 10:04:59 AM

Total Principal and Interest Payments Made by Your School - All Funds

Function	Fund		Principal (910)	Principal (920)	Interest (830)	Total (Principal +Interest)	Misc Other Uses (990)
5110	10	General Fund	1,553,530.54		153,390.19	1,706,920.73	
5110	20	Special Revenue Funds					
5110	30	Capital Projects Funds					615.00
5110	40	Debt Service Fund					
5110	90	Permanent Fund					
5120	10	General Fund					
5120	20	Special Revenue Funds					
5120	30	Capital Projects Funds					
5120	40	Debt Service Fund					
Total Debt Payments - Governmental Funds			\$1,553,530.54		\$153,390.19	\$1,706,920.73	\$615.00

Function	Fund		Principal (910)	Principal (920)	Interest (830)	Total (Principal +Interest)
5110	50	Enterprise Fund				
5110	60	Internal Service Fund				
5120	50	Enterprise Fund				
5120	60	Internal Service Fund				
Total Debt Payments - Proprietary Funds						

LEA : 127045653     New Brighton Area SD

Printed 12/1/2020 10:04:59 AM

**Debt Details**  
**Governmental Funds/ Activities**

Debt Category	Debt Issue Date (MM/YYYY)	Principal Amounts Only				Current Portion Due Within One Year (Principal and Interest)	Interest Paid During Fiscal Year
		Debt at Beginning of Fiscal Year	Additions	Reductions / Repayments	Debt at End of Fiscal Year		
General Obligation Bonds/Notes – CIB	11/2018	2,405,000.00		45,000.00	2,360,000.00	127,540.01	82,540.01
General Obligation Bonds/Notes – CIB	08/2016	1,357,000.00		1,357,000.00			9,566.85
Extended Term Financing Agreements		2,098,984.10		194,872.00	1,904,112.10	216,092.00	61,283.46
Other Post-Employment Benefits (OPEB)		1,149,040.00	114,139.00	82,701.00	1,180,478.00		
Net Pension Liability		34,900,000.00		421,000.00	34,479,000.00		
<b>Totals for Debt Entered:</b>		<b>\$41,910,024.10</b>	<b>\$114,139.00</b>	<b>\$2,100,573.00</b>	<b>\$39,923,590.10</b>	<b>\$343,632.01</b>	<b>\$153,390.32</b>

LEA : 127045653      New Brighton Area SD

Printed 12/1/2020 10:05:08 AM

General Fund (10)

Section 1: Tuition/Purchased Services as Reported within Expenditure Detail	Amount
Tuition Reported in General Fund Expenditures 1000-560	2,271,120.19
Purchased Services in General Fund Expenditures 1000-594 and 1000-597	
<b>Section 1 Total</b>	<b>\$2,271,120.19</b>

Section 2: Tuition Paid to Institution Types During Fiscal Year	Tuition Paid For Nonspecial Education	Tuition Paid For Special Education	Total
1 1306 Institutions			
2 Institutionalized Children's Programs			
3 Juveniles Incarcerated in Adult Facilities			
4 Residential Treatment Facilities			
5 Other Local Education Agencies	92,743.75	59,408.38	152,152.13
6 Brick and Mortar Charter Schools	249,600.52	123,716.38	373,316.90
7 Cyber Charter Schools	505,377.00	237,410.89	742,787.89
8 Career and Technology Centers	439,483.90		439,483.90
9 Approved Private Schools		148,531.15	148,531.15
10 PA Chartered Schools for the Deaf and Blind		79,517.88	79,517.88
11 Private Residential Rehabilitative Institutions			
12 Juvenile Detention Centers			
13 Special Program Jointures			
14 Other Tuition Not Included Elsewhere In This Section		335,330.34	335,330.34
<b>Section 2 Total</b>	<b>\$1,287,205.17</b>	<b>\$983,915.02</b>	<b>\$2,271,120.19</b>

LEA : 127045653      New Brighton Area SD

Printed 12/1/2020 10:05:13 AM

Food Service / Cafeteria Operations Fund (51)

3000 Operation of Non-Instructional Services

Total

500	<u>Other Purchased Services</u>	
570	Food Service Management	836,847.57
Total Other Purchased Services		\$836,847.57
600	<u>Supplies</u>	
610	General Supplies	5,120.00
630	Food	85,995.67
Total Supplies		\$91,115.67
700	<u>Property</u>	
740	Depreciation	7,816.00
Total Property		\$7,816.00
800	<u>Other Objects</u>	
810	Dues and Fees	296.00
Total Other Objects		\$296.00
Total 3000 Operation of Non-Instructional Services		\$936,075.24



LEA : 127045653      New Brighton Area SD

Printed 12/1/2020 10:05:13 AM

Food Service / Cafeteria Operations Fund (51)

3100 Food Services	<u>Elementary</u>	<u>Secondary</u>	<u>Federal</u>	<u>Total</u>
500 <u>Other Purchased Services</u>				
570 Food Service Management				836,847.57
Total Other Purchased Services				\$836,847.57
600 <u>Supplies</u>				
610 General Supplies				5,120.00
630 Food				85,995.67
Total Supplies				\$91,115.67
700 <u>Property</u>				
740 Depreciation				7,816.00
Total Property				\$7,816.00
800 <u>Other Objects</u>				
810 Dues and Fees				296.00
Total Other Objects				\$296.00
Total 3100 Food Services				\$936,075.24

Food Service / Cafeteria Operations Fund (51)

5000 Other Expenditures and Financing Uses

Total

900 Other Uses of Funds

990 Miscellaneous Other Uses of Funds

522.00

Total Other Uses of Funds

\$522.00

Total 5000 Other Expenditures and Financing Uses

\$522.00

LEA : 127045653     New Brighton Area SD

Printed 12/1/2020 10:05:17 AM

Food Service / Cafeteria Operations Fund (51)

5520 Special Items – Losses	<u>Elementary</u>	<u>Secondary</u>	<u>Federal</u>	<u>Total</u>
900 <u>Other Uses of Funds</u>				
990 Miscellaneous Other Uses of Funds				522.00
Total Other Uses of Funds				\$522.00
Total 5520 Special Items – Losses				\$522.00

	<u>Food Service(51)</u>	<u>Child Care Operations(52)</u>	<u>Other Enterprise(58)</u>	<u>Internal Service(60)</u>	<u>Total</u>
<b>3000 <u>Operation of Non-Instructional Services</u></b>					
3100 Food Services	936,075.24				936,075.24
<b>Total Operation of Non-Instructional Services</b>	<b>\$936,075.24</b>				<b>\$936,075.24</b>
<b>5000 <u>Other Expenditures and Financing Uses</u></b>					
5500 Special and Extraordinary Items	522.00				522.00
<b>Total Other Expenditures and Financing Uses</b>	<b>\$522.00</b>				<b>\$522.00</b>
<b>TOTAL ACTUAL EXPENDITURES &amp; OTHER FINANCING USES</b>	<b>\$936,597.24</b>				<b>\$936,597.24</b>

LEA : 127045653    New Brighton Area SD

Printed 12/1/2020 10:05:31 AM

Fund	School	School Number	Local Personnel	Local Nonpersonnel	State Personnel	State Nonpersonnel	Federal Personnel	Federal Nonpersonnel	Total	Explanation
10										
	New Brighton Area El Sch	6720	6,521,683.67	1,271,325.18		116,361.00	556,357.00	264,594.00	8,730,320.85	
	New Brighton Area HS	695	5,895,101.67	1,242,755.79		116,361.00			7,254,218.46	
	New Brighton Area MS	694	4,207,675.67	1,076,890.32		116,361.00			5,400,926.99	
Total			16,624,461.01	3,590,971.29		349,083.00	556,357.00	264,594.00	21,385,466.30	