



## NOTES FROM THE PRINCIPAL

- Thank you to all of the parents who assisted us with the Book Fair this week. Thanks to Mrs. Seamen for coordinating the effort and planning the three-day scheduling.
- We remind all of the families that tuition accounts need to remain current during the school year. Like each of you, our monthly obligations must be met in a timely manner. Please make every effort to keep the account current.
- Our theater production of "Peter Pan" has been shifted to the week of October 16 through the 21. Tick, tock, tick, tock getting close! Auditions will be October 12. More information to come.
- On Wednesday, October 4 we will hold our Annual Pet Blessing ceremony at 2 p.m.



LEARN

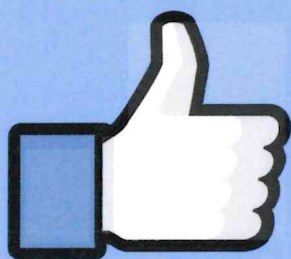
SUCCEED

LEAD

Keep Your Kids Safe Online

# CyberSafety

## DO'S & DON'TS FOR PARENTS



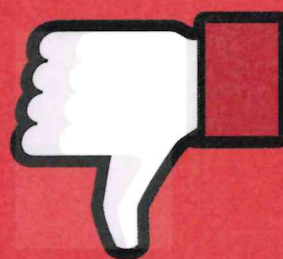
### STAY IN THE OPEN

Keep devices in open spaces. New research indicates bedroom technology use is more harmful.



### GIVE TIME LIMITS

The AAP\* recommends ZERO device time for kids under 2, ONE hour from age 2-5 and no more than TWO hours for all



### IGNORE

Teach kids how to recognize and report bad behavior by NOT ignoring it. Show them and discuss as needed.



### ALLOW MULTI-TASKING

One quality device at a time is all that is necessary. Avoid using TV and phones or tablets, etc.



# St. Anne School PSA

*presents*

## ***Wawa Hoagie Fundraiser***

***Coupons are \$5 each***

Each coupon purchased redeemable

For 1 Wawa Shorti



Name	Homeroom	# of coupons	Total \$

*Quantities are limited. Orders will be filled as they are received. Please send orders to Reagan Bednar Room 502*

*Cash or Check made payable to: St. Anne School*

**15% of Sales Donated**

**15% of Sales Donated**



Your Favorite Neighborhood Pizzeria!

1419 Easton Avenue, Bethlehem

610-865-2013

[www.MartelluccisPizzeria.com](http://www.MartelluccisPizzeria.com)

---

**Dine & Donate Fundraiser**

To Support

**St. Anne's Catholic School  
Parent Teacher Association**



**Tuesday**

**September 26th**

**11 am-8 pm**

**Limited Seating!**

**Dine in, Pick up, or Takeout**

**15% of Sales Donated**

**15% of Sales Donated**

ST. ANNE SCHOOL

# PICTURE DAY

October 5, 2023

It's right around the corner!



To prepay for your order go to:  
**ORDERS.CHRISTMASCITYSTUDIO.COM**

and enter your School Code: **STANNE23**

*PREPAY EXPIRES AT MIDNIGHT ON PICTURE DAY,*  
orders placed after prepay expires may incur shipping fees.



CHRISTMAS CITY STUDIO

3200 Farmersville Rd., Bethlehem, PA 18020 • [christmascitystudio.com](http://christmascitystudio.com) • 610.691.2109



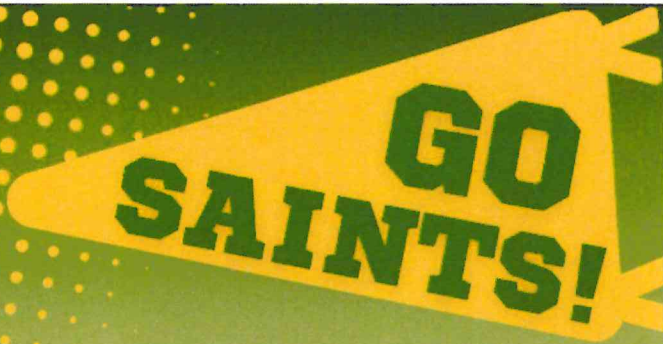
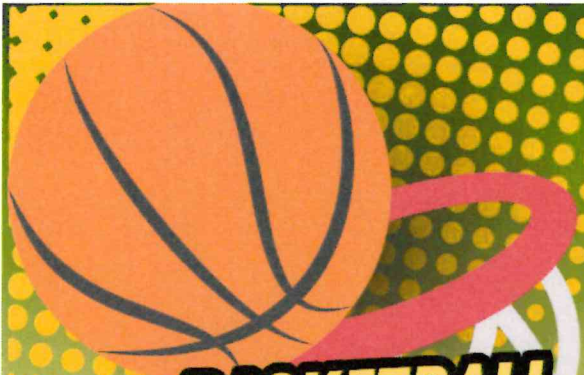


# Family Pumpkin Carving Night

Thursday October 12, 2023  
6-7:30PM  
St. Anne's Community Center

- ★ Carving tools and light refreshments will be provided.
- ★ Please bring your own gutted pumpkin for carving.

Little ghosts and ghouls also welcome!



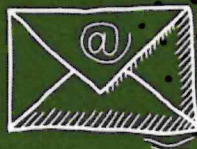
# BASKETBALL REGISTRATION 2023-24



**SCAN HERE!**



**QUESTIONS? EMAIL  
ADRIANNE.APGAR  
@GMAIL.COM**



**OPEN TO ALL  
SAS & CCD  
STUDENTS,  
GRADES 3-8**

# ST. ANNE CYO

# SPIRIT WEAR SALE!

SCAN  
  
HERE



SALE ENDS  
FRI OCT 6!



MAY BE  
WORN ON  
GYM DAYS!





# Fall Ballin

ENTRY  
\$20

## OCTOBER WORKSHOP



**SAT OCT 7<sup>TH</sup>**  
10:00 AM - 12:00 PM



- High school training led by Bethlehem Catholic girls basketball Head Coach Arnold Alleyne, staff and current Lady Hawks players
- Grades K-8th boys & girls (All trainings geared towards level of play)
- Get ready for CYO & community basketball seasons

**COME LEARN THE EARLY SECRETS THAT LEAD TO CHAMPION SUCCESS!**

Bethlehem Catholic - 2133 Madison Ave Bethlehem PA 18017

✉ [GBasketball@becahl.org](mailto:GBasketball@becahl.org)