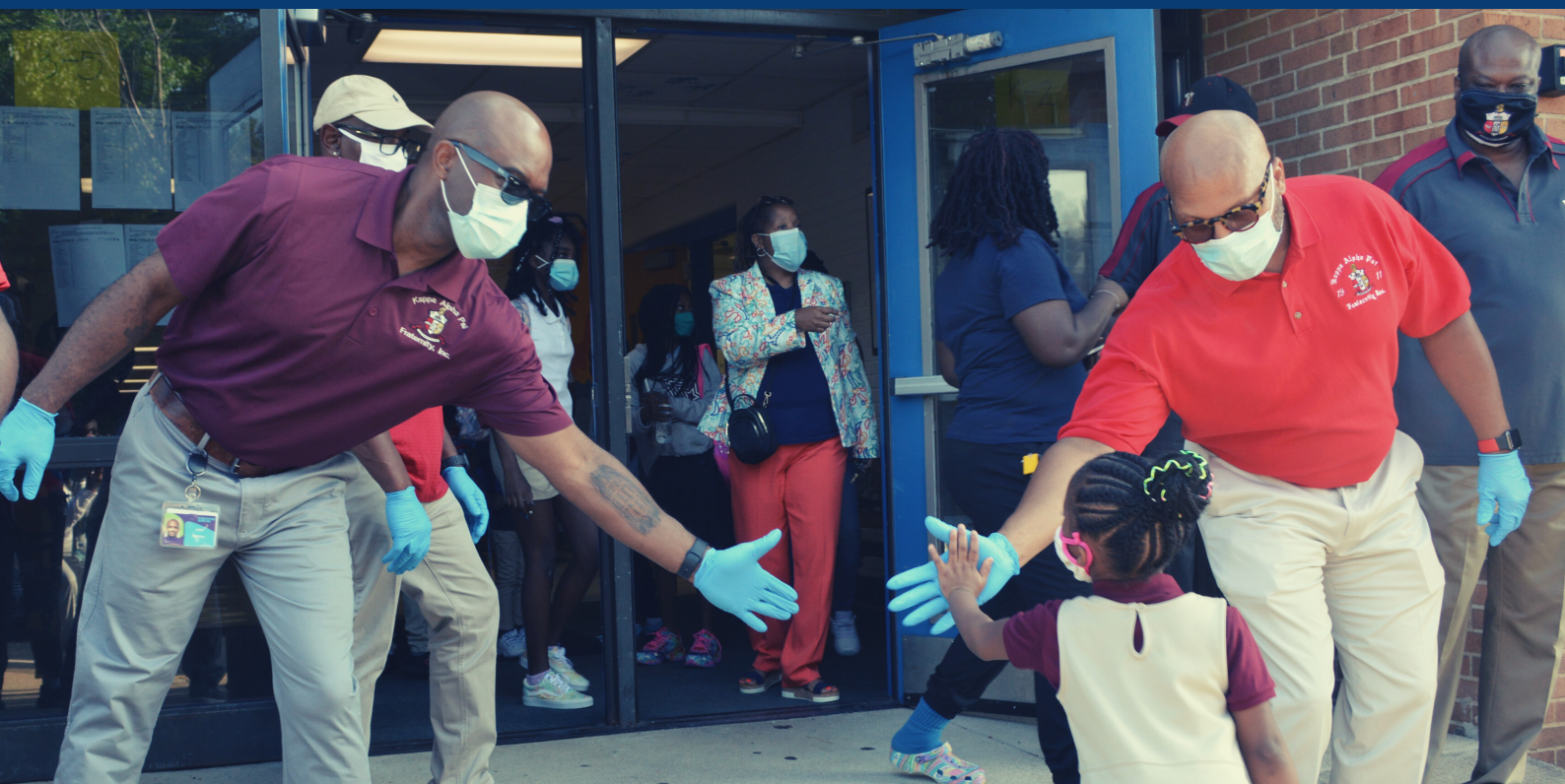




THE INSIDE VIEW

ISSUE 9 • SEPTEMBER 2021



A WARM KAPPA WELCOME

Lemasters Elementary School welcomed scholars back to school in style for the 2021-2022 school year. Members of Kappa Alpha Psi Fraternity and the Metro North Fire Department showed up to support, cheer and high five students as they returned to school on Aug. 23.



RIVERVIEW GARDENS
SCHOOL DISTRICT
NEWSLETTER



IMPORTANT DATES

- 9/16 - TITLE 1 PARENT MEETING
MO-ECAC, **VIRTUAL, 6PM**
- 9/23 - GRANDPARENTS DAY @ KOCH
(OUTDOORS) **10:30AM - 1:30 PM**
- 9/23 - PTO/LITERACY NIGHT
GLASGOW, **4-6PM**
- 9/24 - PROF. DEVELOPMENT DAY
NO SCHOOL, DISTRICTWIDE
- 9/28 - SAB MEETING - OPEN SESSION
VIRTUAL, 7PM

RGSD LAUNCHES COVID DASHBOARD

Riverview Gardens School District has launched a COVID-19 Dashboard to keep parents and community members updated and informed as we continue to face the challenges posed by the pandemic.

Updated weekly, the dashboard will track the number of students and staff members sent home to quarantine due to being a close contact of a suspected or confirmed case of COVID-19. The dashboard also tracks the number of

positive cases reported to the District by parents, staff or the St. Louis County Department of Public Health. To access the COVID-19 Dashboard, click the image above.



School/Location Name	Student Quarantine	Staff Quarantine	Positive Cases in Building
Central Middle	14	0	2
Danforth	21	0	0
Gibson	10	0	0
Glasgow	0	0	0
Highland	0	0	0
Koch	13	0	1
LelMasters	0	0	0
Lewis & Clark	14	0	1
MO-ECAC	5	0	0
Meadows	56	3	1
Moline	11	1	1
Other District Locations	0	0	0
Riverview Gardens High School	0	0	5
Westview Middle	0	0	0

COVID Cases Last 14 Days in RGSD Boundary (Public & Private School Students)*

* Data Source: Missouri Dept. of Health & Senior Services

Ages 5-9
15

Ages 10-14
16

Ages 15-19
21

COVID-19 DASHBOARD

[RGSD Return to School Plan](#)

This Week's Summary: Thru 9/17/21

Student Quarantine
144

Staff Quarantine
6

Positive Cases in Building
11

Year-to-Date (SY 2021-2022)

Student Quarantine (YTD)
282

Staff Quarantine (YTD)
10

Positive Cases in Building (YTD)
20

St. Louis County Transmission Rate (Goal <1)
0.94

* Data Source: covidestim

RIVERVIEW GARDENS SCHOOL DISTRICT
COMMUNITY FOOD DISTRIBUTION

Every **1st Thursday**
of each month
Central Middle School

Every **3rd Thursday**
of each month
Westview Middle School

10AM - 12PM

Fresh Produce, Canned Goods, Dry Goods & Other Items

COMMUNICATIONS SURVEY

We care what you think!

rgsd.k12.mo.us/survey

BACK TO SCHOOL BELIEVE BRUNCH AT GLASGOW ELEMENTARY



NATIONWIDE BUS DRIVER SHORTAGE AFFECTING ROUTE TIMES

HERE'S HOW YOU CAN HELP!

Due to an unprecedented, nationwide bus driver shortage, First Student – our student transportation provider – has experienced delays in picking up and dropping off students. Buses serving our elementary, middle and high schools have been affected by these delays.



RGSD and First Student are committed to ensuring our students are transported to and from school in a safe, orderly and timely manner. However, due to the staffing challenges, we are asking our families to be patient as we expect continued delays in the near future.

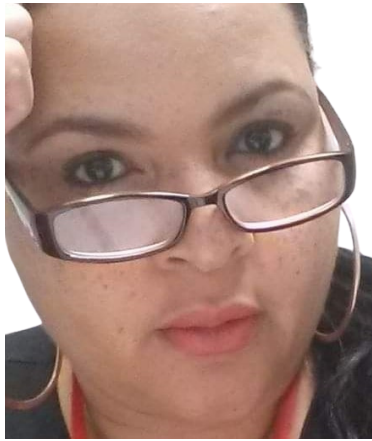
We are working with First Student to create amended routes, additional routes and other changes to mitigate the staffing challenges. In order to speed up the drop-off and pickup processes, we are asking our students and parents to help us by following these practices:

- **Bus Riders:** Please report to your bus immediately once school has been dismissed. Please limit standing and socializing so that our buses may get started on their routes as soon as possible.
- **Walkers:** Please head to your route home immediately once school has been dismissed. Please limit socializing on school campus before and after school.
- **Parents**
 - **(Car Pickup):** Please follow the instructions of the school officials directing traffic during pickup and dismissal. Please do not get out of your vehicle or block traffic. The fastest way to reduce the traffic during drop off and pickup is to follow the procedures put in place by school leaders.
 - **(Early Pickup):** Please do not pick up your children early unless it is absolutely necessary. Early pickups run the risk of impacting dismissal. Students leaving school early may also negatively impact your child's attendance and learning. Please allow your child to attend school all day except when it is absolutely necessary that your child leave early.

We appreciate your patience and understanding as work together towards a solution to restore all bus routes to normal and timely service.



STAFF SPOTLIGHT - DR. GINA JENKINS



Dr. Gina M. Jenkins, reading specialist at Glasgow Elementary, is proud to be a Riverview Gardens High School Ram of the Class of 1983. She has over 20 years of teaching experience and has served in many roles such as elementary teacher, instructional coach, reading specialist, summer school principal and afterschool tutoring coordinator.

Jenkins is committed to giving back to the District and community. Her major priority is building strong literacy foundations for the students she serves. Jenkins recently completed her Doctoral Degree in Educational Practices/Social Justice from UMSL.

THE SUPER'S REVIEW

By Dr. Scott Spurgeon, Superintendent of Schools

In recent weeks, school officials have received phone calls, emails and text messages from concerned parents stating they heard through the grapevine that the school would be "closed due to COVID-19." I want to take a moment to address the false rumors.

Riverview Gardens School District continues to educate scholars in person. Additionally, we continue to follow the health and safety guidelines, practices and procedures put forth by the CDC, St. Louis County Department of Public Health and the Missouri Department of Elementary and Secondary Education.

RGSD recently launched a COVID-19 Dashboard to provide transparency on how the District is managing through the pandemic. We encourage parents, staff and community members to check the dashboard on a weekly basis to track the number of students and staff quarantined throughout the school year, as well as the number of positive cases identified.

If the District is ever forced to return to virtual learning due to COVID-19, we will share that information directly with parents, staff and the community via letters, emails, phone calls and text messages, as well as on our official website and social media outlets.

I am grateful to our amazing staff as they continue to rise to the challenge to ensure that Riverview Gardens School District can provide an excellent, and safe, education to all scholars.

Still, we continue to seek out talented and dedicated employees to join our team. Like many employers, we are working hard to fill job vacancies. If you are interested in a rewarding career and would like to have a positive impact on the youth in the RGSD community, please consider joining our Ram family!

Thank You and It's Always a Great Day to Be a Ram!

