

21st Century Healthcare Occupations

According to the U.S. Bureau of Labor Statistics (2015), healthcare and healthcare related professions are expected to have unprecedented growth over the next 10 years, with an overall increase of 6.5% or 9.8 million jobs.



"I've learned that people will forget what you said, people will forget what you did, but people will never forget how you made them feel."

Maya Angelou

For more information regarding the Pike County Schools Academy Programs, contact your high school guidance counselor.



The Pike County School System does not discriminate based on race, color, national origin, sex, disability, or age in its programs and activities. It provides equal access to the Boy Scouts and other designated youth groups.

The following person has been designated to handle inquiries regarding the non-discrimination policies:

Mrs. Tamika Hurt, Special Programs Coordinator
(334) 566-1850 – thurt@pikecountyschools.com



Superintendent:

Dr. Mark Bazzell

mbazzell@pikecountyschools.com

Administrative Assistant to the Superintendent:

Mr. Jeff McClure

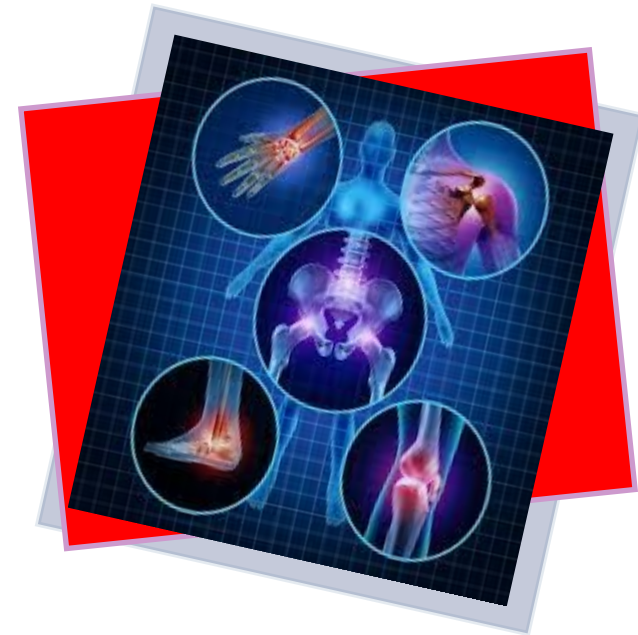
jmcclure@pikecountyschools.com

Academy and Dual Enrollment Coordinator:

Mrs. Jodie Jefcoat

jjefcoat@pikecountyschools.com

Exercise & Health Academy



Pike County School District

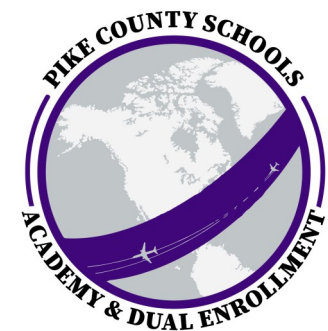
101 West Love Street

Troy, AL 36081

District Phone: (334) 566-1850

CA³L Phone: (334) 566-5396

www.pikecountyschools.com



What does it take?

For consideration into the Exercise & Health Academy, students must:

- Enroll in a Pike County School
- Apply in the 9th grade
- Have a GPA of 3.0 or higher
- Have ACT or ACCUPLACER Scores of:
 - ACT
 - 20 or higher in English/Writing
 - 18 or higher in Mathematics
- ACCUPLACER Qualifying Score
 - English Composition I - ENG 1101
 - Intermediate College Algebra - MTH 1105
- Good attendance
- Good discipline/conduct
- Overall Good Standing with their school
- Submit completed academy Application
- Review of transcript
- Recommendations
 - One (1) administrator
 - Three (3) teachers (two must be core academic)
- Write an essay explaining why you would be an excellent candidate for one of our academies.



"Excellence in Education"

Pike County Schools

EXERCISE & HEALTH

Semester	Course Schedule*
Fall Semester Sophomore Year (7 hours)	ART 1133 (3) Visual Arts TROY 1101 (1) University Orientation KHP 2240 (3) Personal and Community Health
Spring Semester Sophomore Year (6 hours)	SCI 2233 (3) Physical Science SCI L233 (1) Physical Science Lab KHP 2202 (2) First Aid and Safety and CPR
Fall Semester Junior Year (12 hours)	ENG 1101 (3) Composition and Modern English I HIS 1111 (3) US History I SCI 2234 (3) Earth and Space Science SCI L234 (1) Earth and Space Science Lab KHP 2260 (2) Applied Fitness Concepts
Spring Semester Junior Year (12 hours)	ENG 1102 (3) Composition and Modern English II HIS 1112 (3) US History II MTH 1105 (3) Intermediate College Algebra** KHP 2211 (3) Human Nutrition
Summer Term Junior Year (7 hours)	IS 2241 (3) Computer Concepts and Application BIO 1100 (3) Principles of Biology* BIO L100 (1) Principles of Biology Lab*
Fall Semester Senior Year (12 hours)	ENG 2205 (3) World Literature I POL 2241 (3) American National Government MTH 1112 (3) Pre-Calculus Algebra KHP 3360 (3) Physiological Principles of Body Systems
Spring Semester Senior Year (9 hours)	ENG 2206 (3) World Literature II ECO 2251 (3) Principles of Macroeconomics* KHP 3395 (2) Care and Prevention of Athletic Injury KHP Elective (1)
65 Total Hours	Note—program of study is subject to change based on the needs of Troy University and/or the Pike County School System.