

---

September 2022 Newsletter

---



[Make A Donation Today](#)

## September 2022 Newsletter

Hello Gene,

The name Gateway Community Action Partnership reflects our expanded coverage area, but more importantly, it signifies what we are all about. We are a gateway to success for individuals and families in our community and we achieve those results through actions done in partnership within that very community we serve. So please take a minute to read our newsletter and learn more about Gateway Community Action Partnership and our impact in our communities.

### Agency Mission And CAP Promise

The agency's mission is to provide services that improve the quality of life and promote self-sufficiency.

**CAP Promise:** Community Action changes people's lives, embodies the spirit of hope, improves communities, and makes America a better place to live. We care about the entire community, and we are dedicated to helping people help themselves and each other.

---

## Jazz Fans Enjoy Sounds Of CAP JazzFest In Atlantic City





**Jazz fans thrilled to the sounds of Incognito and Maysa and others at the 2022 CAP JAZZFEST at the Sound Waves theater in the Hard Rock Hotel & Casino in Atlantic City on Sept 17. The event was hosted by Gateway Community Action Partnership, O.C.E.A.N. Inc, and HOPES CAP. Among those in attendance was former NBA player Cuttino Mobley in photo above and left.**

[Click Here For CAP JazzFest Program](#)



## Three Gateway Staff Earn CCAP Status, Recognized At National Convention In New York City



Gateway Community Action Partnership's Dr. Colleen Turner, Dan Muller and Kyana Evans officially joined the ranks of Certified Community Action Professional (CCAP) on Thursday, September 1. Turner, Muller and Evans were presented their certificate and CCAP pin at the National Community Action Partnership (NCAP) annual national conference in New York. The CCAP presentation was held during the conference's gala awards dinner which is a keynote event at the annual gathering. A candidate for CCAP must submit a Candidate Data Form and an Executive Skills Portfolio, which when graded, must garner enough points so that the candidate can qualify to sit for the CCAP exam. Other CCAPs at Gateway are President and CEO Albert B. Kelly, Executive VP/Chief Operations Officer Edward Bethea, VP/Social Services/Compliance Officer Denise Todd, VP/Head Start Bonnie Eggenburg, VP/Women,

Infants & Children (WIC) Jaya Makukha, Director of Grant Development Gene Vernacchio and Grants Manager Ed Hilt. Former WIC Director Electra Moses, former VP of Planning Michael Cudemo and the late Herbert P. DiMaio, Senior VP/Planning, also earned CCAP status while working with the agency.

---

## **Dr. Colleen Turner Produces One Of The Top Two CCAP Executive Skills Portfolios In The Nation**

---



Gateway proudly congratulates Dr. Colleen Turner, Director of Operations for Gateway Head Start in Atlantic and Cape May Counties on her outstanding achievement and inclusion in the Lois J. Carson Library of Excellence in Executive Skills Portfolios.

Each CCAP Program Year, during the evaluation of ESPs (Executive Skills Portfolios), the evaluators have a chance to acknowledge ESPs of Excellence. Gateway's Dr. Colleen Turner was one of eight ESPs submitted to the CCAP Commission this year. Colleen's was selected as one of two to be included in a web-based depository known as the Lois J. Carson Library of Excellence in Executive Skills Portfolios.

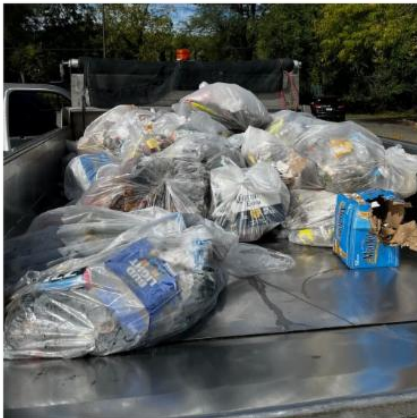
Formal Recognition of Colleen's achievement took place at the 2022 National Community Action Partnership Annual Convention Awards Gala on September 1 at the Marriott Marquis Hotel in New York City.

---

## **Bridgeton Comes Together To Clean Up City**

---





**Albert B. Kelly, Gateway's President and CEO and Mayor of Bridgeton, and Edward Bethea, Gateway's Executive VP and COO, were among those who volunteered in Bridgeton's Semi-Annual Citywide Cleanup/Celebration on September 24. Volunteers came together to remove 1.5 tons of trash off of Bridgeton's city streets. There were about 30 residents volunteering. Also in attendance were Esaul Martin, Gateway's Southeast Gateway Neighborhood Revitalization Coordinator, Dr. Keith Miles, the superintendent of Bridgeton Public Schools, and representatives from the VFW and some of the city's police, fire department and first responders.**

---

## Gateway Head Start Staff Happy



## To Welcome Children Back To The Classroom

---



Gateway staff gathered to welcome children from River's Edge Head Start and the Cheryl Chadwick Center as they returned to the classroom on September 7 for a brand new school year.

---

---

## Gateway Family Success Centers Families

## Grateful For Generosity Of Caring Individuals

---



Our Family Success Centers were given a donation of 200 backpacks from the "Cradles to Crayons" Program. Each FSC had their own "Back to School" event, where bags were distributed to families in need.



Pastor Anthony Elliott from Apostolic Lighthouse Church in Millville and Beacon Of Hope Church in Laurel Lake picks up backpacks and toys from Gateway's Family Success Centers and Food Pantry for children and families in need.

---

## Southeast Gateway's UNITY Day Brings Residents Together For Fun, Fellowship

---





Families from across the county gathered together on Saturday, September 3 for Southeast Gateway's UNITY Day celebration.

---

## Twins Rivers Head Start Children Return To Classroom

---



Twin Rivers Head Start children had a great first week at the center!

## Head Start Busy With Recruitment At Start Of New School Year

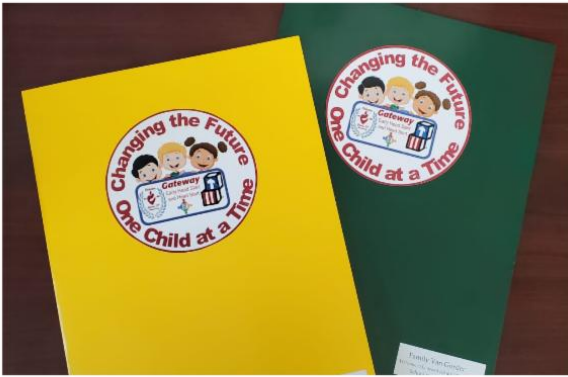


Community Services Manager and CCYC Supervisor Carolyn Robinson assisted with recruitment for Gateway’s Head Start and Early Head Start programs on September 3 at Community Day in Philadelphia. For more information, please visit our website by clicking the button:

Visit our website

## Linwood Head Start Welcomes Parents With Orientation





Linwood Head Start held two orientation events for parents of Head Start students to welcome them to the new school year. Each family was given a folder with a welcome letter, a schedule, and a parent handbook. All materials were available in both English and Spanish.

## Former Head Start Student Titus Mims Provides Leadership As Positive Role Model



## WilmU Provides Innovative Solutions to Resolve Delaware's Teacher Shortage

**W**ilmington University Elementary Education major and paraeducator Titus Mims stands out as he walks the halls of Seaford Central Elementary School.

One of only three men among the 30-plus teachers and paraeducators at the school, Mims finds that the younger boys often seek him out. "A lot of the younger boys, they really come to me for help. Seeing another male, I guess it makes them feel good about being young men," he says.

His experience at Seaford Central, coupled with the fact that he is a 41-year-old husband and father of five who has made a career change to become a teacher, make Mims the embodiment of what WilmU hopes to accomplish with an array of innovative and impactful initiatives designed to attract future educators.

Led by dean Dr. John Gray, WilmU's College of Education & Liberal Arts is deploying those initiatives to tackle not only a statewide teacher shortage, but more specifically the shortage of African American male teachers.

Gray asserts that "teacher shortage" is something of a misnomer. "There is no teacher shortage overall, but there is one in certain areas," he says. He cites special education, where there are more than 100 vacancies in Delaware. Science and math are other areas of need.

But perhaps the gravest ongoing problem is at the elementary school level, where, Gray says, "most teachers are middle-class white females, whereas most of the kids in Delaware elementary schools are lower income—in terms of socioeconomic level, minority, and males. So, there's a real conflict there."

The University has several new ideas designed to cut the costs and time required to become a teacher, and at least one of them is aimed at minorities: the Promise Grant, a full scholarship for students of color that includes tuition, books and fees. Mims is one of three students now on the Promise Grant scholarship.

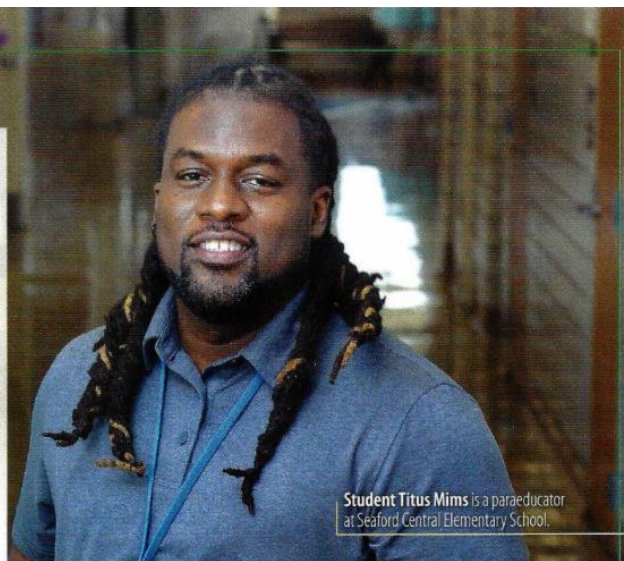
### High School Initiatives & Praxis for Credit

Hazel Showell-Walker tells the WilmU story at high schools throughout the state that are part of the Teacher Academy, which prepares students for careers in elementary and secondary education by offering coursework (for college credit) in and out of the classroom. She starts with a few fast facts:

- More than 50% of all Delaware educators earned their credentials at WilmU.
- 12 of the 20 Delaware School District Teachers of the Year for 2020 were Wilmington University graduates.
- 11 of the last 14 Delaware Teachers of the Year hold WilmU degrees.

A university that **works** for Delaware's teachers.

Find out how at [wilmu.edu/educator/best](http://wilmu.edu/educator/best)



Student Titus Mims is a paraeducator at Seaford Central Elementary School.

Showell-Walker adds that those results emanate from education preparation programs that are fully accredited, nationally recognized, and state approved.

WilmU's hallmark affordability has been enhanced by several recent innovations, including an offering that reflects the school's commitment to aspiring teachers.

**WilmU is the only university in the United States to offer college credits to high school students who pass the Praxis exams during their senior year.**

Praxis exams assess the skills of students in four content areas: social studies, math, science, and literacy. Students that enroll at WilmU while in high school can receive 19 credits for passing those four exams.

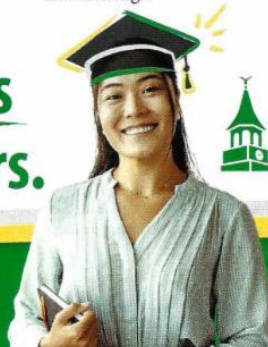
High school students can also earn 20 to 30 credits through Dual Enrollment and pathway articulation programs. Dual Enrollment is a partnership between WilmU and more than a dozen high schools throughout the state to deliver on-site coursework to eligible students.

Eligible students can also receive a reoccurring scholarship that reduces tuition per credit by 15%, which saves them up to \$7,196 for a bachelor's degree.

### Year-Long Residency

Student teachers can choose from two tracks: the traditional 15-week program or a Year-Long Residency (YLR), which fully immerses student teachers in school culture with a mentor teacher for an entire academic year. YLR participants are paid \$20,000 or \$25,000, depending on whether they are placed at a high-needs school. As a further incentive, the University offers a 50% tuition reduction to year-long residents, applied to the student's last 24 credits.

While growing public school enrollment combined with a dwindling teacher workforce promise to be a challenge throughout America for at least the next decade, in Delaware, Wilmington University is answering that challenge.



WILMINGTON  
UNIVERSITY™

WilmU is a registered trademark of Wilmington University.  
All rights reserved. © Wilmington University 2022





**Titus Mims, the son of Carolyn Robinson, Gateway Head Start Community Services Manager and CCYC Supervisor, was featured in a University of Wilmington publication. Mims is making a difference in the lives of youth as a positive role model. Mims is a product of the Head Start program.**

---

## **Dad Walk Your Child to School Day Encourages Engagement In Children's Education**

---



**“Dad Walk Your Child to School Day” is an initiative to engage fathers and father figures in their children’s education.**

**This initial introduction into their child’s school is to encourage dads to be an active participant in their children’s education, helping to lay a path for greater success in the child’s academic future.**

**This initiative takes place at thousands of schools, Head Start programs, and educational settings across the United States.**

**Below are a few photos from "Dad Walk Your Child to School Day" at Twin Rivers Head Start.**

---

## **Atlantic City Electric's New Smart Meters An Upgrade To Service For Customers**

---



Atlantic City Electric's broad installation of new smart meters for its nearly 565,000 customers in South Jersey began this year as part of the company's new Smart Energy Network. Smart meters will be installed across South Jersey counties, including Cape May, Atlantic, Ocean, Burlington, Camden, Gloucester, Cumberland and Salem. These upgrades will enhance reliability, improve the resiliency of energy service and support new tools and programs to help save money and energy.



After the smart meters are activated, customers will have more tools to help them manage their energy usage and save, including high bill alerts and bill forecasts to stay on budget each month and new online features to identify energy saving tips.

There is no upfront cost to customers for new smart meters.

Customers will receive several communications prior to their meter upgrade providing additional information about the upgrade process.

Once complete, the Smart Energy Network will provide:

- Tools that can help customers use energy more efficiently and save money.
- Enhanced reliability with faster and more efficient power restoration efforts.
- More detailed outage information when outages occur.
- Reduced need for estimated billing.
- Better integration of new clean energy technologies.

For more information about Atlantic City Electric's Smart Energy Network, click the button below:

[Click Here For Smart Meter Info](#)

You can support Gateway's mission "to provide services that improve the quality of life and promote self-sufficiency" while shopping at Amazon's "AmazonSmile." Please click on the link below the next time you shop. More information about the program follows the link. Thank you.

[Click Here To Donate To Gateway Through AmazonSmile!](#)

## About AmazonSmile

### What is AmazonSmile?

AmazonSmile is a simple and automatic way for you to support Gateway Community Action Partnership every time you shop, at no cost to you. When you shop at smile.amazon.com, you'll find the exact same low prices, vast selection and convenient shopping experience as Amazon.com, with the added bonus that Amazon will donate a portion of the purchase price to Gateway.

### How do I shop at AmazonSmile?

To shop at AmazonSmile simply click on the link above or go to smile.amazon.com from the web browser on your computer or mobile device. You may also want to add a bookmark to smile.amazon.com to make it even easier to return and start your shopping at AmazonSmile.

### Which products on AmazonSmile are eligible for charitable donations?

Tens of millions of products on AmazonSmile are eligible for donations. You will see eligible products marked "Eligible for AmazonSmile donation" on their product detail pages. Recurring Subscribe-and-Save purchases and subscription renewals are not currently eligible.

**Can I use my existing Amazon.com account on AmazonSmile?**

Yes, you use the same account on Amazon.com and AmazonSmile. Your shopping cart, Wish List, wedding or baby registry, and other account settings are also the same.

---

## Welcome to Gateway CAP's New Hires!

**Selina Asante, Dentist WOW Mobile**

**Cassidy Gould, Head Start**

**Joshua Robles, Head Start**

**Olympia Tsiprailidis, Head Start**

**Shaquora Britt, Atlantic Cape Early Learning Center**

**Jasmin Rosario Munoz, Head Start**

### Gateway Community Action Partnership

110 Cohansey Street  
Bridgeton, NJ 08302  
Phone: (856) 451-6330

Contact Us Today



Gateway Community Action Partnership | 110 Cohansey Street, Bridgeton, NJ 08302

[Update Profile](#) | [Constant Contact Data Notice](#)

