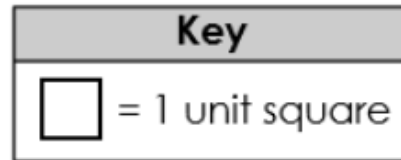
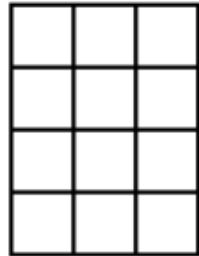


### 3.MD.5 #2

(State Released Items)

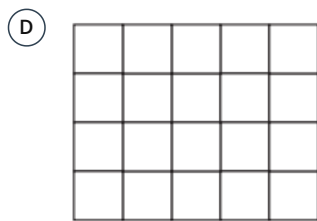
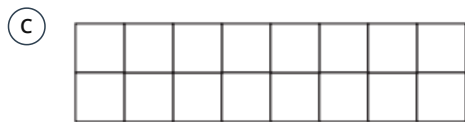
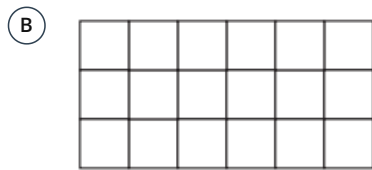
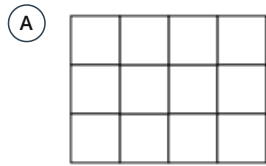
- 1 A diagram is shown.



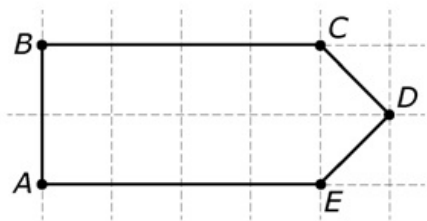
Which measure would be found by counting all the unit squares in the rectangle?

- (A) area
- (B) length
- (C) volume
- (D) perimeter

2 Which figure has an area of 18 square units?

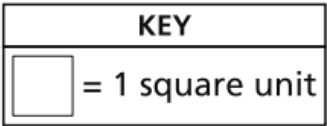


3 Find the area of the plane figure.



Area =  square units.

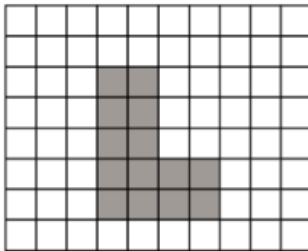
4



What is the area, in square units, of the rectangle?

- (A) 16
- (B) 20
- (C) 24
- (D) 28

5

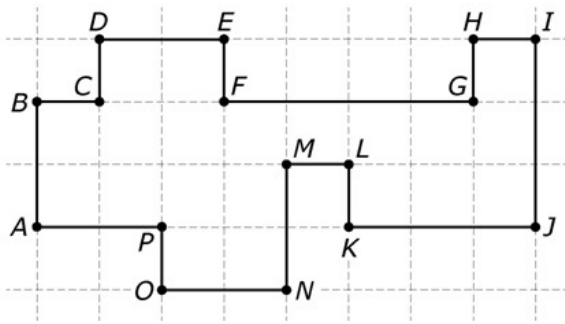


What does a  represent?

- (A) one square unit
- (B) two square units
- (C) four square units
- (D) fourteen square units

6

Find the area of the plane figure.



Area =  square units.

7

If each side of a square has a length of 1 unit, which statement about the square is true?

- (A) The square is a unit square that can be used to measure mass.
- (B) The square is a unit square that can be used to measure area.
- (C) The square is a unit square that can be used to measure volume.
- (D) The square is a unit square that can be used to measure weight.