

The HUSKY HOWL



JACKSON COUNTY CENTRAL
SCHOOL DISTRICT #2895

School Start and Dismiss Times

Riverside Elem. 8:15 - 3:05
Pleasantview Elem. 8:15 - 3:10
Middle School 8:15 - 3:10
High School 8:10 - 3:05
Wednesday Dismissal 1:30

Classes resume Tuesday, September 6th.

Pleasantview and Riverside Schools will have entrance conferences on September 6 & 7; elementary students will attend this conference with their parents - watch for a letter in August with more information.



Our Mission:

Uniting our communities to prepare learners to succeed in an ever-changing world.

Inspiring Excellence.

Our Vision:

Inspiring all learners to become respectful, engaged citizens through partnership in learner-centered education.

District Office
Main Office:
507-847-3608

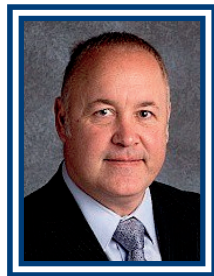
High School
Main Office:
507-847-5310

Middle School
Main Office:
507-662-6625

Pleasantview
Main Office:
507-662-6218

Riverside
Main Office:
507-847-5963

Superintendent's Corner



Jackson County Central Families,

Welcome to the 2022-2023 school year! I hope you had a restful summer and are ready to make this year one of the best. With the start of the school year, we have many opportunities and challenges ahead of us to improve the lives of our students.

First and foremost, we are continually improving the positive learning environment for all students and staff and ensure every student has the opportunity to become successful at JCC.

Secondly, the challenges we face are student accountability, manners, social, and mental health. We want to continue to build partnerships with our students and families to help support our student's academic and social needs.

In addition, I am so grateful to our families as we embark on the new school year. Our community is fortunate to have parents and caretakers who are as involved and deeply committed to their children's education. Thank you for your patience and support and entrusting your children to us. Please know that our first days of school will be focused on building relationships and sense of community. Our students are the reason we do what we do. We are excited to see them in the fall. We will work together to assure that our students have the social, emotional, and mental health supports needed for continued success.

Lastly, we are progressing with the new middle school. Our hope is to be moved into the new school in January. The new early childhood center is complete at Riverside Elementary. We are so excited for the new addition. We have also updated the high school gym floor with a new logo as well as doing routine maintenance on all the other buildings. We will also be dismissing earlier on Wednesdays at 1:30pm. This is a change from last year.

Thank you so much for your continued support in helping JCC unite our communities and inspire excellence.



Administration

Barry Schmidt
Superintendent

Maria Bezdicek
Business Manager

Emily Anderson
Human Resources/Business

Grace Grommesh
Payroll/Finance

Rachel Haar
Administrative Assistant

Alyssa Anderson
School Nurse

Gina Sinn
Paraprofessional/Nurse Aide

Lisa Schensted
ECFE/Discovery Place

Jacqueline Knips
Community Services Director

Kari Rubitschung
Food Services Director

Shirley Handzus
Technology Coordinator

Drew Wedebrand
Building & Grounds Director

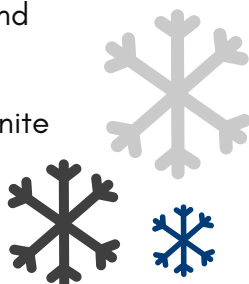
Dates to Remember:

- Athletic meeting - August 8**
- First day of School - September 6**
- Homecoming - September 25 - October 1**
- Minnesota Educator Academy (MEA) - October 20-21**
- Thanksgiving Break - November 23- 25**
- *Check out page 3 for JCC's 2022-2023 school calendar.**



School Closings

All late starts, early dismissals, and school cancellations will be announced on our local radio & television stations, as well as Infinite Campus.
KKOJ/KRAQ 1190AM/105.7 FM
KDOM 94.3 FM
WCCO TV Channel 4



School Board

- Rhonda Moore**, Board Chair
- Brad Anderson**, Vice-Chair
- Jody Thrush**, Clerk
- Amy Voss**, Treasurer
- Tina Polz**, Director
- Eric Kruger**, Director
- Troy Shultz**, Director



23-24 New Teacher Training
30-31 Teacher Workshop

AUGUST '22						
S	M	T	W	Th	F	S
	1	2	3	4	5	6
7	8	9	10	11	12	13
14	15	16	17	18	19	20
21	22	23	24	25	26	27
28	29	30	31			
1						

FEBRUARY '23						
S	M	T	W	Th	F	S
			1	2	3	4
5	6	7	8	9	10	11
12	13	14	15	16	17	18
19	20	21	22	23	24	25
26	27	28				
1						19

13 Elementary Conferences (4-8)
16 Elementary Conferences (1-8) (Early Out)
20 No School (CD) Staff Dev.

1 Teacher Workshop
5 Labor Day
6 Class Begins 6-12
6-7 Elem. Conference (PreK-5)
8 Class Begins Prek-5

SEPTEMBER '22						
S	M	T	W	Th	F	S
				1	2	3
4	5	6	7	8	9	10
11	12	13	14	15	16	17
18	19	20	21	22	23	24
25	26	27	28	29	30	
1						19

MARCH '23						
S	M	T	W	Th	F	S
			1	2	3	4
5	6	7	8	9	10	11
12	13	14	15	16	17	18
19	20	21	22	23	24	25
26	27	28	29	30	31	
1						22

9 MS/HS Conferences 4-8 pm
14 MS/HS Conferences 4-8 pm
17th No School: (CD) Staff Dev.

20-21 Fall Break (MEA)

OCTOBER '22						
S	M	T	W	Th	F	S
						1
2	3	4	5	6	7	8
9	10	11	12	13	14	15
16	17	18	19	20	21	22
23	24	25	26	27	28	29
30	31					19

APRIL '23						
S	M	T	W	Th	F	S
						1
2	3	4	5	6	7	8
9	10	11	12	13	14	15
16	17	18	19	20	21	22
23	24	25	26	27	28	29
30	1					17

6 No School /Flex PD
7 No School Good Friday
09 Easter Sunday
10 No School

4 No School Staff Dev. Day
11 Veterans Day
15 Elementary Conferences (4-8)
17 MS/HS Conferences 4-8 pm
21 Elementary Conferences (1-8) (Early out)
21 MS/HS Conferences 4-8 pm (Early Out)
23 No school Staff Dev. Flex PD
24 Thanksgiving Day

NOVEMBER '22						
S	M	T	W	Th	F	S
		1	2	3	4	5
6	7	8	9	10	11	12
13	14	15	16	17	18	19
20	21	22	23	24	25	26
27	28	29	30			
2						18

MAY '23						
S	M	T	W	Th	F	S
	1	2	3	4	5	6
7	8	9	10	11	12	13
14	15	16	17	18	19	20
21	22	23	24	25	26	27
28	29	30	31			
						22

28 HS Graduation
29 Memorial's Day

25 Christmas
26-30 Christmas Break

DECEMBER '22						
S	M	T	W	Th	F	S
				1	2	3
4	5	6	7	8	9	10
11	12	13	14	15	16	17
18	19	20	21	22	23	24
25	26	27	28	29	30	31
						17

JUNE '23						
S	M	T	W	Th	F	S
				1	2	3
4	5	6	7	8	9	10
11	12	13	14	15	16	17
18	19	20	21	22	23	24
25	26	27	28	29	30	
1						1

1 End of 2nd Semester (87 Days)
 Last Day of School
2 Staff Development Day
Snow Make Up days:
 5 virtual Learning Days, and June 5-9.
174 Student contact Days
+10 Staff Dev. Days
184 Total Days

02 Christmas Break
03 Class Begins
16 M.L. King Day
20 End of Semester 1 (87)
23 No School Staff Dev. Day
24 Start of Semester 2

JANUARY '23						
S	M	T	W	Th	F	S
1	2	3	4	5	6	7
8	9	10	11	12	13	14
15	16	17	18	19	20	21
22	23	24	25	26	27	28
29	30	31				
1						20

JULY '23						
S	M	T	W	Th	F	S
						1
2	3	4	5	6	7	8
9	10	11	12	13	14	15
16	17	18	19	20	21	22
23	24	25	26	27	28	29
30	31					

04 Independence Day
All Wednesdays from Sept. 7-May 31 will be 1:30: pm Early Dismissals.



New Student Registration

Families new to Jackson County Central School District are encouraged to register their children as soon as possible for the upcoming year. Registering early allows school personnel to properly place students and formerly orientate students & parents to our District. Ready to register? Call our District Office at 507-847-3608.

Get Connected!

Updates and School notices will be posted on our website: www.jccschools.com, on social media, and via calls/texts/emails. Did your information change? Let us know!

Want to talk with staff? Their emails are up-to-date on our website.

Parent Portal: Your online access to grades, attendance, and lunch balances.

Already have one? Please log-in and update!

Need to get set up? Contact your child's main office.

Infinite Campus

A one stop destination for parents. Using your portal account, you can view your child's grades, check lunch balances, and sign up for alerts.

To register: go to www.jccschools.com and click on the Parent Portal tab on the District's Home page.

Already have an account? Please take a few minutes to update any new contact information.

Church Night

Wednesday is designated as church night in Jackson & Lakefield. Activity advisors are to be certain that no school activities occur after 6:00 pm.

Every effort has been made to avoid scheduling any events which involve JCC students on Sunday. Any exceptions must be approved by administration.

NSF Charge Back Fee

Checks & Electronic Transfers:

In the event of a returned check, or electronic transfer from a lending institution, said individual will be charged a \$20 fee per check by the school district.

Returned Credit Card Payments:

In the event of a returned credit card payment, the district will electronically debit the Household's account in the amount that was charged. Additionally, the individual responsible for the returned payment will be charged a \$40 fee per returned payment by the school district.

Nurse's Corner



Medications- Prescriptions- A physician's order & a written parent/guardian authorization are required to give prescription medications at school. The physician order must be completed before medication can be administered. Please note the directions on the prescription bottle must match the physician order. Please ask the pharmacy to separate medication into two bottles, one for home and one for the school.

Over-the-Counter medications- require a parent signature and will only be given per the directions on the container. An Alternate dose will be given only after submission of a physician's order. For elementary students, over-the-counter medications must be kept in the school health office and administered by a trained staff member. Middle and High school students can carry their own over-the-counter pain medication, but a signed parental consent and student agreement must be signed and on file in the health office.

Inhalers- Students using asthma inhalers at the school will need an Asthma Action plan completed by the physician.

Epi-Pens- Each school building does stock epi-pens for emergencies. All staff are trained on epi-pens. Students requiring an epi-pen for a life-threatening allergy will need an Allergy Action plan completed by a physician.

Food Allergies- All food allergies do require paperwork filled out by the child physician. Each year allergies will need to be reviewed with the parent and the schools kitchen. Please contact the school prior to school starting to discuss allergies and complete appropriate paperwork. This is to confirm food substitutions can be ordered in time. Lactose free milk only requires a parent signature, form is found online.

Immunization - Immunizations are important to keep all our students safe and healthy. Please check to make sure your child's immunizations are current with the Minnesota Department of Health's school requirements. Students entering Kindergarten, 7th grade and 12th grade need to receive immunizations.

Health Screenings- Vision and Hearing screenings are done in the fall. JCC schools follow the most current MDH guidelines on what grades get tested for hearing and vision. If your child does not pass a screening a letter will be mailed to your home for further evaluation by their primary care provider.

Head lice- Please let the health office know if your child does have head lice. All information is confidential but we need to know so we can help control the spread of head lice. If we do not know about it, we cannot help control lice.

When to keep your child home: Fever over 100.3 degrees or higher. (Your child should be fever free for 24 hours, without the use of fever reducing medicines, before returning to school); **nausea and vomiting; diarrhea; a rough night** (for example, if your child was up all night coughing, having pain, or having trouble breathing); **listlessness or lethargy.** Any health information though out the school year is very important to your child's learning. Please call and talk to the health office with concerns throughout the school year. Any questions, please contact Nurse Alyssa Anderson at Alyssa.anderson@jccschools.com

*Please refer to the Wellness policy listed on the JCC district website. It was recently updated to reflect our goals to lead a healthy district, with healthy students & staff.

Health History Form

2022-2023

Name: _____ DOB: _____ Grade: _____ Teacher: _____

Please indicate if your child has been diagnosed with any of the following medical conditions.

ADD/ADHD Yes No **Anxiety** Yes No

Depression Yes No **Cancer** Yes No

Cardiac Condition Yes No **Dental Problems** Yes No

Diabetes Yes No **Seizure Disorder** Yes No

Seasonal Allergies Yes No **Gastrointestinal Disorder** Yes No

Asthma Yes No
If yes, will an inhaler be kept at school? Yes No
**If your child has asthma please attach a copy of your Child's Asthma Action Plan.

Food Allergies Yes No
If yes, please list allergy and reaction: _____
**A "Special Diet Statement" form must be completed by a health care provider if food substitutions are needed.

Other Allergies Yes No
If yes, please list allergy and reaction: _____

Epi-Pen at school for ANY allergy? Yes No
If yes, what is the allergy: _____
**If an epi-pen is needed, please have your physician complete an Allergy Action Plan.

Please explain any of the above if necessary: _____

Does your child wear contacts or glasses? Neither Contacts Glasses

Does your child have a hearing impairment? No Yes, no treatment Yes, hearing Aid(s)

Please list any major medical condition and/or surgery that your child has/had: _____

Please list all medications your child takes (include over-the-counter medications): _____

Please list any other specialty care or mental/emotional care that we should be aware of: _____

Emergency or Illness

In case of an injury or illness, please list contacts in the order we should attempt calling, including parents/guardians.

Name	Relationship	Phone Number (Indicate work, cell, home)
1. _____	_____	_____
2. _____	_____	_____
3. _____	_____	_____
4. _____	_____	_____

In case of emergency, our procedure will be to notify the first person we are able to contact from the list above.

When that is not possible or the situation is emergent:

1. School personnel may transport your child to the Sanford Clinic in Lakefield or Jackson, or the Sanford Jackson Medical Center emergency room. Staff will not transport to alternative facilities in an emergency.
2. 911 may be called to transport your child to the nearest appropriate facility.

Signature of parent/guardian _____ Date: _____

SUBMIT FORMS ON
REGISTRATION NIGHT:

- Kindergarten Immunizations
- 7th Grade Immunizations
- Health History Form
- Prescription Medication Form



Principal's Corner

Hello from Riverside Elementary!

I hope everyone is having a wonderful summer break and looking forward to the 2022-2023 school year! As we prepare for the upcoming school year, I am excited to share a few updates with you.

We are offering our second year of the Summer Reading Booster program to students. This is an opportunity to boost their reading skills! Next year, we plan to incorporate more Social-Emotional Learning into our classrooms, and will also have a separate Reset Space in the school that provides a structured and safe calming area where students can go to "reset" and learn how to regulate the level of their emotions with healthy coping skills.

There will be a few changes to our JCC Riverside staff next year. We would like to welcome Mackenzie Ward, who will teach PK-5 Art. We are also excited to offer Transitional Kindergarten option to parents and students. Mindy Fett will be teaching the Transitional Kindergarten class.

Construction and building maintenance will continue over the summer including landscaping around the lower parking lot and preschool areas, resurfacing the playground blacktop, maintenance on the outside brick of the gymnasium, installation of a new intercom system, and general roof repair and maintenance.

PK-5 Elementary Early Entrance Conferences are scheduled for Tuesday, September 6 and Wednesday, September 7. PK-5 students will begin their first day of classes on Thursday, September 8. In August, parents/guardians will receive information regarding their child's classroom teacher and conference registration.

I look forward to seeing everyone in the fall as we continue to provide a safe, positive and productive learning environment for students! As always, please contact me anytime if you have any questions at 507-847-6649 or kim.meyer@jccschools.net.

Have an amazing summer!

Kimberly Meyer, Ed.D.
Riverside Elementary Principal



**Riverside
Main Line:
507-847-5963**

Kimberly Meyer
Principal
(Pictured to the left)

Shirley Anderson
Elementary Counselor

Sue Schulz
Administration Asst.

Nicole Kapplinger
Librarian

Chuck Behrends
Head Custodian

Teaching Staff

- Ward, Mackenzie Art
- Haren, Janet DAPE and Phy Ed
- Sitzmann, Andrea Math Intervention, ELL
- Condon, Shelly First Grade
- Hanson, Katie First Grade
- Hendrickson, Jill First Grade
- Henning, Mackenzie First Grade
- Hoffman, Cassie Kindergarten
- O'Connor, Lori Kindergarten
- Fett, Melinda Kindergarten
- Pratt, Beverly Kindergarten
- Olson, LeAnn Music
- Tvinnereim, Eric Phy Ed
- Morrell, Staci Phy Ed
- Lucht, Lindsey Preschool
- Brinkman, Mary Preschool

- Paulson, Kim Preschool
- Pohlman, Casie Reading
- Klassen, Kim Reading
- Nunez, Sandra Reading
- DiBrito, Mike Second Grade
- Mitchell, Rachael Second Grade
- Rogers, Brittany Second Grade
- Theesfeld, Sarah Second Grade
- Gates, Edith Special Ed Admin. Asst.
- Munoz, Collin Special Ed
- Rohloff, Pam Special Ed, SEAT
- Snyder, Darcy Special Ed
- Pyan, Kari Special Ed
- DiBrito, Shelly Speech
- Gumto, James Third Grade
- Hanson, Brooke Third Grade
- Orpen, Angie Third Grade
- Reed, Robyn Third Grade

KIDS CLUB

Offering childcare for students
Kindergarten -5th grade
at Riverside & Pleasantview
6:30 am - 5:30 pm M-F,
non-school days, and summer

Contact Director Darci Thurmer at
507-847-5868 or darci.thurmer@jccschools.net

DISCOVERY PLACE

Offering childcare to children
33 months - 5 years
at Riverside & Pleasantview.
6:30 am - 5:30 pm M-F,
non-school days, and summer

Contact Director Lisa Schensted at
507-847-5868 or lisa.schensted@jccschools.net



Discovery Place Preschool – 3's

- 1 regular size backpack
- 3 Containers Clorox wipes
- 8 glue sticks
- 4 dry erase markers
- 1 box washable Crayola markers
- 2 boxes (**5 oz.**) Dixie cups
- 4 rolls paper towels
- 2 boxes tissues
- 1 folder
- Water bottle (w/ student name)
- Complete Change of Clothes (put in a Ziploc bag)
- Wet Ones
- Ziploc bags (quart or gallon)
- Extra items: We can always use more! (Wet One, Ziploc bags)*

Discovery Place Preschool-4/5's

- 1 regular size backpack
- 3 Containers Clorox wipes
- 8 glue sticks
- 1 - 4 oz white Elmer's glue
- 2 boxes of tissues
- 2 boxes 5 oz Dixie cups
- 2 box washable markers (Crayola)
- 6 dry erase markers
- 1 folder
- 1 pencil box
- 1 scissor
- 1 watercolor paint
- 1 nap mat
- water bottle (w/ students name)
- 4 rolls of paper towels
- Wet Ones
- Ziploc Bags (Quart OR Gallon)
- Full change of clothes (in a Ziploc)
- Oversized T-shirt for for
- Extra Items: (Wipes, Ziplocs, Towels, treats: small, unwrapped)

Kindergarten

- 2 Box of tissues (200 count)
- Backpack (Large)
- 5 Black dry erase Expo board markers
- 10 sharpened pencils (#2 lead)
- 10 Elmer's Glue sticks
- 1 Supply box (no zipper pockets)
- 4 Boxes Crayola crayons (box 24)
- 1 Hardcover 1 inch binder
- 4 Durable Folders w/pockets (not punched or brads)
- 1 Scissor (Fiskar)
- 1 Box Gallon size Ziploc bags

Kindergarten Continued

- 2 Clorox Wipes
- 1 Headphones (no ear buds)
- 1 bottle hand sanitizer
- 1 Notebook
- 1 set washable markers (box of 10)
- 1 big pink eraser
- 2 iPad stylus
- Necessary immunizations before first day of school***

Grade One

- Backpack
- Box of tissues
- 2 folders w/bottom pockets
- 2 spiral notebook-wide line
- 2 Erasers (pink)
- 1 yellow highlighter
- Supply box-no zipper pouches
- 10 pack Crayola washable markers
- Headphones (no earbuds or wireless)
- 4 glue sticks
- 2 Boxes of 24 Crayola brand crayons-no jumbo/generic crayons
- 4 black dry erase markers
- 12 - #2 Sharpened pencils
- Scissor
- Disinfectant wipes (any brand)
- Boys - paper towels
- Girls - paper plates

Grade Two

- Box of Tissues (200 count)
- Pencil Box
- Backpack
- Ruler with inches & centimeters, (non-bendable)
- 6 small Glue Sticks
- 1 Scissor
- Crayons (1 box of 24)
- 24 Sharpened Plain Yellow pencils with Erasers
- 2 Folders with Pockets
- 2 Spiral WIDE Lined Notebook
- 1 inch binder
- 1 Big Eraser
- 4 Dry Erase Markers
- 1 highlighters
- Headphones
- Clorox Wipes

Grade Two Continued

- Whiteboard eraser or sock
- Washable Markers
- Colored Pencils
- Girls - gallon Ziploc bags
- Boys - paper plates

Grade Three

- Book bag
- Box of Tissues
- Clorox wipes
- Headphones
- Large zippered pencil bag
- Crayons (Box of 24)
- Colored Pencils
- Scissor
- 4 large glue sticks
- Large Eraser
- 24 Wooden #2 pencils w/eraser
- 4 dry erase markers
- 1 package loose leaf paper (wide line)
- 3 Spiral notebooks (wide line)
- 3 pocket folders w/holes
- 2 - 1" 3 ring binder
- Hand-held pencil sharpener
- Sharpie yellow highlighter (2 pk)

Music – Any of the following

- Box-markers or dry erase markers
- Box of Tissues

Art

- Large paint shirt - button up
- 3rd Grade** - Sketchbook (unlined)
- Donation per family - Choose 1**
disinfectant wipes, glue sticks, baby wipes, Elmer's glue (bottle), 1 dry erase marker, 2 black sharpies
- Suggested Donations**
cereal boxes, paper tubes, ice cream bucket, plastic peanut butter jar

Health Office

- Kleenex - Clorox Wipes - Baby Wipes

Phy-Ed

- Students only need 1 pair of lace-up tennis shoes for PE**, they don't need a separate pair. Just a reminder - if a student wears dress shoes or other footwear, **they still need to bring their tennis shoes for PE.**

Hello from Pleasantview!

I hope everyone is relaxing while enjoying summer break. Before we know it the beginning of school will be here. I am getting ready for another great year and I hope you are as well! Here are a few updates about what has been happening at Pleasantview:

Construction is continuing throughout the summer. When you return to school you will see some new lockers, feel cooler, air-conditioned air and see the connection point where Pleasantview connects to the new middle school! The plan is to be eating lunch in the gym at the start of the

school year. The playground equipment is a likely possibility which I know the students have dearly missed. It will be fun to see what equipment comes in.

We have one new staff member joining our team this year: Mrs. Stacy Wiebersch, who will be teaching 5th Grade. Ms. Alison Duncan, who joined us in January will be returning this fall within the 4th grade. Mrs. Doescher will be returning to help students in all grades with behavior regulation/management and Tier 2 accommodations.

Entrance conferences for this year will be September 6th and 7th with school starting on September 8th for Pleasantview students. Please be on the lookout for a letter coming out this summer with more details about entrance conferences.

I am eager to start the 2022-23 school year as it's going to be a fabulous one. As always, if you have any questions please give me a call at 507-662-6218 or email at chris.naumann@jccschools.com

Mr. Naumann
JCC 4th-8th Grade Principal



**Pleasantview
Main Line:
507-662-6618**

Chris Naumann
Principal
(Pictured to the left)

Tamela Timko
Director of Curriculum
and Assessments

Tracy Johnson
Elementary Counselor

Jamie Doescher
Behavior Specialist

Michelle Salzwedel
Administration Asst.

Jamie Janssen
Librarian

Craig Kolander
Head Custodian

Teaching Staff

Mackenzie Ward Art
Haren, Janet DAPE
Sitzmann, Andrea ELL
Entriken, Missy Fifth Grade
Bahr, Easton Fifth Grade
Wiebersch, Stacy Fifth Grade
Gallagher, Gina Fourth Grade
Holm, Kevin Fourth Grade
Pohlman, Brittany Fourth Grade

Duncan, Alison Fourth Grade
Scheitel, Kari Music
Seitzinger, Travis PE/Health
Wierson, Michael PE/Health
Buresch, Jody Preschool
Welp, Kateyan Preschool
Wierson, Diedre Reading
Bahr, Renae Special Ed
Tietz, Nicole Special Ed
Brennan, Brittany Speech



Supply List

Preschool-3:

- 3 containers Clorox wipes
- 8 glue sticks
- 4 dry erase markers
- 1 box washable markers (Crayola please)
- 2 boxes (5 oz) Dixie cups
- 4 rolls paper towels
- 2 boxes Kleenex
- 1 folder
- Water Bottle (put student name on it)
- Regular size backpack
- Full change of clothes (put in gallon Ziploc)
- Wet Ones
- 1 regular size backpack
- Ziploc bags-quart OR gal

Extra items:

- Wet Ones
- Ziploc bags (quart OR gallon)

Preschool-4/5:

- 3 containers Clorox wipes
- 8 glue sticks
- 1 - 4 oz. white Elmers glue
- 2 boxes of Kleenex
- 2 boxes (5 oz.) Dixie cups
- 2 boxes washable markers (Crayola please)
- 6 dry erase markers
- Full change of clothes (put in a Ziploc bag)
- Oversized paint t-shirt
- 1 folder
- 1 pencil box
- 1 scissor
- 4 rolls paper towels
- 1 regular size backpack
- 1 watercolor paint
- 1 nap mat
- Water Bottle - student name
- Wet Ones
- Ziploc Bags-quart or gallon

- Extra items:** Wet Ones
Ziploc bags (quart/gallon)
Clorox wipes/paper towels
Treats - small, unwrapped

4th Grade:

- Headphones
- 1 Box of tissues
- Pencil Cap Erasers
- Scissor
- Disinfectant wipes
- 6 glue sticks
- Zippered pencil bag
- Crayons
- Colored pencils
- 8 dry erase markers
- 3 spiral notebooks
- 1 folder
- 24 pencils
- Handheld pencil sharpener (not battery operated)
- Set of markers
- 2 Black Sharpies

Other (All grades):

- Phy Ed** - Pair of PE shoes
- Art** - Sketchbook (unlined)
- Nurse** - Clorox wipes
box of tissues

5th Grade:

- Box of Kleenex
- 2 Clorox wipes
- Pencil bag or box
- Markers
- 5 large glue sticks
- Composition notebook
- Colored pencils
- 24 pencils w/eraser (#2 lead)
- Handheld pencil sharpener
- 2 pens
- Eraser
- Scissors
- 5 folders
- 3 single spiral notebooks
- 1 - 3 subject spiral notebook
- 10 whiteboard markers
- Whiteboard eraser or sock
- Headphones or earbuds
- ***Please No binders***



Principal's Corner

Hello from the JCC Middle School!

I hope everyone is enjoying the well-deserved summer break. Before we know it, the beginning of a new school year will be here and I couldn't be more excited! While the new middle school building will not be ready for the start of the 2022-2023 school year, our hope is to be in the new building when we return after Christmas break. Let's hope for no more delays and excellent weather!

With lots going on at the MS, I want to make sure everyone is up-to-date on the details:

We will have a few new staff members this year which we are very enthusiastic about!

- Former JCC Husky Chris Gumto is returning to teach PE and Health.
- Jamie Doescher will be learning from the legendary Sharon Bloome in the office. She will also be at Pleasantview where she will be a Tier 2 behavior Specialist.
- Christy Duncan is teaching math as Mrs. Dean is moving the HS to teach.

Other exciting news centers around our rotating classes. We are expanding our STEM classes in all grade levels. 6th grade will have two different STEM classes while 7th & 8th grades each having one STEM class. We have also added a 30 minute *What I Need Time* (WIN). During this time students will have a variety of options available to them: advisory time, social-emotional learning (SEL), math homework rooms, wellness room, and restore time. The Husky Way Mid-mester program is in full swing. This year will be the first year students will have capstone presentations. Capstone presentations are for 8th graders and it is their opportunity to showcase what they've learned during their time in MS. Our Back-to-School Night will be September 1st from 4-8pm at the current middle school, 205 5th Ave. N. in Lakefield. Students will receive schedules, locate locker assignments and take fall school portraits. See you on September 1st!

I hope the aforementioned updates have you just as excited as I am! As always, if you have any questions please give me a call at 662-6625 or send me an email at chris.naumann@jccschools.com

Mr. Naumann
JCC 4th-8th Grade Principal



**Middle School
Main Line:
507-662-6625**

Chris Naumann
Principal
(Pictured to the left)

Melissa Ahlschlager
Middle School Counselor

Sharon Bloome
Jamie Doescher
Administration Asst.

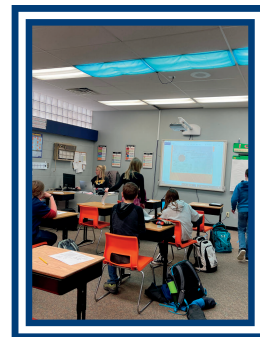
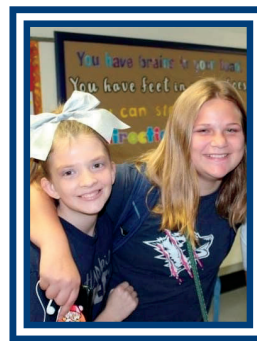
Nathan Kolander
Head Custodian



Teaching Staff

Anderson, Kate Agriculture
 Jacobsen, Blaise Art
 Colby, Erica Band
 Grote, Lori Choir
 Haren, Janet DAPE
 Sitzmann, Andrea ELL
 Meyer, Lyn English
 Thorston, Scarlet English
 Voss, Amanda English
 Boogerd, Tara Math
 Duncan Christy Math
 Ackermann, Alyssa Math

Chris Gumto PE/Health
 Kocak, Mark PE/Health
 Sietzinger, Travis PE/Health
 Christensen, Brittany Science
 Reinking, Rick Science
 Schneekloth, Abby Science
 Hein, Alex Social Studies
 Pauling, Cory Social Studies
 Eggink, Keith Special Ed
 Jasper, Lynn Special Ed
 Schultz, Kaleen Special Ed
 Brennan, Brittany Speech



Supply List

6th Grade

- 1 correcting pen
- 4 glue sticks OR bottles of white glue
- 8 EXPO markers (4 chisel tip and 4 fine tip)
- 1 zip-up binder
- 1 Standard Calculator (math)
- 2 Composition Notebooks (1 math, 1 science)

7th Grade

- 2 highlighters (English)
- 2 dry erase markers (Math)
- 2 composition notebooks (1 English, 1 Science)
- Standard Calculator (Math)
- 1 yard material for pillow case (Life knowledge)
- 2 Expo dry erase markers

8th Grade

- 2 Expo dry erase markers (AG)
- 1 Journal (English)
- 1 composition notebook (Science)
- Color pencils/markers (Science)
- 2 dry erase markers (Math)
- Calculator (TI-30XS recommended) (Math)

Other

- Plum Creek Library Card
- Choir:** 1 highlighter, 1 box Tissues

ALL Grades 6,7,8

- \$5 Class Dues
- HEADPHONES (Earphones/Earbuds for ChromeBook)
- 30 Pencils
- 1 Pencil bag
- 4 Pocket folders and Notebooks 1 each (Red, Yellow, Green, Blue)
- 1 box Kleenex
- 1 Container of Clorox wipes
- Phy Ed Shoes and Clothes/deodorant
- 1 Combination Padlock for student locker (optional)

Principal's Corner

Hello from JCC High School!

I hope everyone is having an awesome summer. It will be great to see everyone again this Fall. Here are some of the new and exciting things that are happening at JCC High School next year.



**High School
Main Line:
507-847-5310**

Keri Bergeson
Principal
(Pictured to the left)

We have several new staff members joining our team at JCC HS next year. We would like to welcome the following new staff: Kim Dean will be moving to the high school to teach Math. Nate Hanson will be returning to teach Math, Katlyn Kneifl will be teaching Social Studies, Rachel Langman and Kristin Stoltenberg will be teaching Science. We are looking forward to the education opportunities and enthusiasm that they will add to our already amazing staff!

Dustin Pautsch
Activities Director

So what is new at JCC High School for next year? Our staff has been working on our Husky Career Pathways initiative. So what are the goals of a Husky Career Pathway?

- Utilizing students' interests and aptitudes to guide choices for their education and their future careers.
- Changing the college decision-making process from "Where do I want to go?" to "What do I want to be?"
- Acquiring marketable skills first, then pursuing higher levels of education.
- Pursuing careers that match high demand, high paying jobs.

Darcy Reed Lusk
High School Counselor

In addition to required coursework, students will start their Husky Pathways journey by taking a career Pathways class in 9th grade. The purpose of the class is to learn about careers in the following area: Business Management and Administration, Agriculture/Natural Resources, Arts/Information Systems, Manufacturing/Engineering/Technology, Health Sciences, and Human Services. Students will take interest and aptitude surveys, learn about 21st Century skills, take field trips to local businesses, and listen to speakers on various careers. At the end of the class, students will select a Career Pathway that fits their interests. Students will review their Husky Pathway every year to see if it is still the best fit for them.

Sara Treybal
Administration Asst.

Mary Boyum
Administration Asst.

We will also be switching from a seven period day to an eight period day so students will have more opportunities to take classes in various Career Pathways. In addition to these classes, we will also be offering a Work Based Learning Program for juniors and seniors next year. The purpose of this program is for students to work during the school day in one of our communities to see if it is a career path they would like to pursue post high school.

Leane Gustafson
Librarian

Back to School Nights are tentatively scheduled in the Auditorium for the dates listed below:

- 8/8/22 6:00pm Athletic Parent Meeting
- 8/18/22 6:00pm 12th Grade Parent/Student Meeting
- 8/22/22 5:00pm FFA Meeting for all students participating
- 8/22/22 6:00pm 9th Grade and New Student Parent/Student Meeting
- 8/29/22 6:00pm 10th and 11th Grade Parent/Student Meeting
- 9/6/22 8:10am First Student Day



I am looking forward to a great school year!

Keri Bergeson
Keri.bergeson@jccschools.net
Phone: 507-847-5310

Class Schedule:
 Period 1: 8:10 – 8:54
 Period 2: 8:58 – 9:42
 Period 3: 9:46 – 10:30
 Period 4: 10:34 – 11:18
 Period 5A: 11:22 – 12:06
 Lunch A: 12:10 – 12:41
 Period 5B: 11:57 – 1:41
 Lunch B: 11:22 – 11:53
 Period 6: 12:45 – 1:29
 Period 7: 1:33 – 2:17
 Period 8: 2:21 – 3:05

Early Release Schedule:
 Period 1: 8:10 – 8:37
 Period 2: 8:41 – 9:08
 Period 3: 9:12 – 9:39
 Period 4: 9:43 – 10:10
 Period 5: 10:14 – 10:41
 Period 6: 10:45 – 11:12
 Period 7: 11:16 – 11:43
 Period 8: 11:47 – 12:14
 FLP: 12:18 – 1:00
 Lunch: 1:00 – 1:30

Teaching Staff

Ag: Kate Anderson
 Ag: Laura Bidne
 Ag: Adam Manderfeld

 Art: Aline Wilking
 Art: Blaise Jacobsen

 Social: Katlyn Kneifl
 Social: Karrah Lucht
 Social: Sean Minder
 Social: Angela Beckel

Science: Barb Tvinnereim
 Science: Rachel Langman
 Science: Kristin Stoltenberg

 Band: Erica Colby
 Choir: Lori Grote

 Math: Nate Hanson
 Math: Rhonda Schmidt
 Math: Kim Dean

 Credit Recovery: Ron Helmich

English: Kerri Rose
 English: Tracy Steiner
 English: Rafe York
 Spanish: Tamie Egge

 PE/Health: Mike Wierson
 PE/Health: Staci Morrell
 Instructional Coach: Angela Beckel

 Sped: Tom Schuller
 Sped: Robin Medill
 Sped: Molly Snyders
 Sped: Jacob Johnson



High School Supply List

AGRICULTURE:

- All Ag Classes: box of tissues
- \$25 Ag Foods class (10)
- \$25 Foods class (11-12)
- \$25 Creative Foods class
- \$25 Floral Design
- \$25 DIY class
- \$25 Adv. DIY
- \$25 Metal Tech 1
- \$25 Metal Tech 1 class
- \$30 FFA Dues
- \$55 FFA Activity Fee

ART:

- All Art Classes: set of colored pencils, ruler, #2 pencils, sketchbook, box of tissues
- \$25 Ceramics
- \$25 Adv. Ceramics
- \$25 Screen Printing (100% cotton clothing)
- \$25 Studio Art 1
- \$25 Studio Art 2
- \$25 Studio Painting
- 1 box tissues: Creative Drawing, Graphic Design, Photography, Short Films & Cinema, Video Gaming

BAND:

- Instrumental rental: \$100.00
- Percussion: \$35.00
- Pep Band t-shirt order

CHOIR:

- 1 box of tissues

PE:

- Shorts/sweatpants, t-shirt/sweatshirt to change into for class, swim suit for swim days, tennis shoes

PLATO:

- folders, note cards, pencils

MATH:

- Mr. Hanson, Ms. Schmidt, Ms. Dean:
- Texas Instruments Calculator TI 83 or higher graphing calculator, graph paper, 3 subject Notebook

SCIENCE:

- Chemistry/Physics: Scientific calculator
- 9th Grade: Any calculator, folder, notebook

SOCIAL:

- 9th grade: \$5.00 for World's Fair Project

SPANISH:

- 1 box of tissues

ALL classes require a folder, notebook, pencils & pens.

Headphones or ear buds are also requested.

Class Dues:

9th & 10th Grades \$15.00

11th & 12th Grades \$20.00

Athletics

Athletic Fees:

- Varsity Football \$100 (f/r \$35)
- Other HS Sports \$90 (f/r \$35)
- 7th/8th Grade Sports*\$65 (f/r \$25)
- Other Activity Fees \$55 (f/r \$25)
- Max per Family \$400
- *MS athletes participating in HS sport will pay HS fee
- f/r - free/reduced lunch status

Athletic Tickets/Passes:

- Adults \$7
- Students \$5
- College Students \$5
- Student Pass \$50
- Adult Pass \$80
- Senior Pass* Free
- HS Student Pass Free (with ID)
- *Seniors must reside in JCC School District

Fall Practice Schedule:

- Fall Sports Meeting
- HS/MS Football Practice
- HS/MS Volleyball Practice
- HS/MS Cross Country Practice
- HS Cheer



FALL PARENT SPORTS MEETING

August 8th

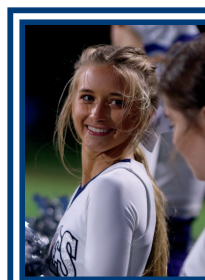
6:00 pm

HS Auditorium

PRACTICES START:

August 15 - High School

August 22 - Middle School



Procedures

For up-to-date athletic scheduling, please check the JCC website (www.jccschools.com) or the activity calendar at www.bigsouthconference.org. You may also register to receive emails and/or text reminders or schedule changes. If you have any questions regarding this information, please contact the Jackson County Central High School athletic office at 507-847-5310.

Before practice begins...

All JCC athletes, 7-12th grades, must have the following paperwork (link on our website) on file prior to participation:

1. Current Sports Physical (good for three years)
2. MN State High School League Eligibility Form
3. Insurance & Free/Reduced Lunch Waiver (JCC does not provide any type of insurance for injuries incurred by your student. If you do not feel your insurance is adequate, or if you do not have insurance, please review the students insurance program)
4. In good standing academically and with the student code of conduct
5. Athletic Fees must be paid



JACKSON COUNTY CENTRAL H.S. PARTNERSHIP PROGRAM

2022-2023



This sponsorship opportunity is designed to support the student athletes and athletic programs at JCC. We encourage members of the community to help us in supporting the continued excellence of JCC athletics by becoming a sponsor.

Each sponsorship comes with advertising opportunities for your business or organization.

Gold Sponsor - \$750/year

Small ad in the 2022-23 school calendar, name in all 2022-23 athletic programs, 1 activity pass.

Elite Sponsor - \$1500/year

Small ad on gym scoreboard, small add in the 2022-23 school calendar, name in all 2022-23 athletic programs, 2 activity passes.

Premier Sponsor - \$2000/year

Small ad on gym scoreboard, large rotating ad at indoor games, large ad in the 2022-23 school calendar, name in all 2022-23 athletic programs, 3 activity passes.

Champion Sponsor - \$2500/year

Large ad on gym scoreboard, Ad on the scoreboard at Football games, large ad in the 2022-23 school calendar, name in all 2022-23 athletic programs, 4 activity passes.

**If interested in supporting JCC Athletic Programs contact
Activities Director, Dustin Pautsch @ 507-847-5310**




LOCAL FOUNDERS OF THE  CAMPAIGN WITHIN JCC SCHOOLS

OUR MISSION: Uniting our communities to inspire all learners to live a healthy positive lifestyle with a focus on reducing and preventing alcohol, tobacco, and other drug (ATOD) use.

OUR VISION: To reduce and prevent the use of alcohol, tobacco, and other drugs (ATOD) use among Jackson County Central youth.

OUR CAMPAIGN: Our one husky pack campaign was founded to share that MOST huskies choose NOT to drink alcohol and/or vape & huskies don't leave behind part of their pack.

OUR SOCIALS: Follow us on Facebook or Instagram to learn more about our upcoming events and meetings. Find us at facebook.com/onehuskypack and instagram.com/onehuskypack

 *Are you interested in getting involved with PATH? Come to our August meeting!*
Tuesday, August 16th 12:00pm-1:00pm in JCC High School Room 34. RSVP for free lunch!
Contact Coordinator Tiffany by call/text at (507) 594 - 8160 or email at tiffany.lamb@jccschools.net

JCC Nutrition Services Mission Statement : "TO FUEL OUR STUDENTS FOR THE SCHOOL DAY BY PROVIDING NUTRITIOUS MEALS AND PROMOTE HEALTH AND WELLNESS THROUGHOUT THE DISTRICT. OUR STAFF STRIVE TO DISPLAY EXCELLENT CUSTOMER SERVICE AND CREATE A WELCOMING ENVIRONMENT FOR OUR STUDENTS."

Meal Pricing will return to pre-pandemic Free/Reduced/Paid eligibility.

2022-2023 MEAL PRICING

- Full Pay Elementary Student Lunch: **\$2.55**
- Full Pay Middle School & High School Student Lunch: **\$2.70**
- Breakfast in ALL Schools: **\$1.00**
- Qualified Free/Reduced Meals: FREE
- **Families must complete the Application for Educational Benefits each school year to qualify.**

MEAL ACCOUNT PAYMENTS

- CASH or CHECK payments should be given to the administrative assistant in the school office.
- Place CASH PAYMENTS in a sealed envelope with full name of student(s) written on the outside.
- For CHECK PAYMENTS, please write your student(s) full name in the memo section of check.
- If you would like the PAYMENT SPLIT between family members, please let us know how you would like it split.
- Payments turned in after 9:00 a.m. may be processed the following day.

LOW BALANCE \ NEGATIVE REMINDERS

- Infinite Campus will send an automated reminder via text/email when below \$15.00 and also when negative.
- Insufficient Funds Policy: It is the parent's responsibility to keep a positive balance in the student's account.
- Students are not allowed to purchase any a la carte items if their meal balance is zero or negative.
- A la carte items include extra entrees, extra milk or milk only, side items, or any other items not included in a reimbursable meal.
- Purchases cannot be made using a friend's account.
- For student accounts with negative balances, the food service director or building administrator may make calls or send emails to parents.
- Meal account balances carry over year to year.

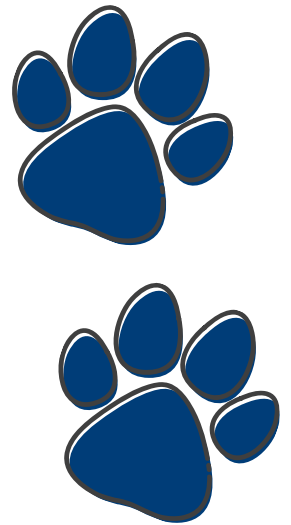
Annual Application for Educational Benefits (Free/Reduced Application)

Parents are strongly encouraged to read the Application for Educational Benefits information thoroughly and fill out if they may qualify. Applications need to be completed yearly. The application and information are included with this newsletter, at the building offices, or available online at www.jccschools.com. Questions about this form should be directed to

Kari Rubitschung at kari.rubitschung@jccschools.net or 507-847-6637.



**Form
on pages
16-17**



APPLICATION FOR EDUCATIONAL BENEFITS

Who should complete this application? Children in households participating in the Supplemental Nutrition Assistance Program (SNAP), Minnesota Family Investment Program (MFIP) or Food Distribution Program on Indian Reservations (FDPIR), and foster, homeless, migrant and runaway children can qualify without reporting household income. Alternatively, children can qualify if their household income is within the maximum income shown for their household size on the instructions.

COMMON QUESTIONS:

I get WIC or Medical Assistance. Can my children get free school meals? Children in households participating in WIC or Medical Assistance do not automatically qualify for free meals. Children may be eligible for free or reduced-price school meals depending on other household financial information. Please fill out an application.

Who should I include as household members? Include yourself and all other people living in the household, related or not (such as grandparents, other relatives, or friends).

May I apply if someone in my household is not a U.S. citizen? Yes. You or your children do not have to be U.S. citizens for your children to qualify for free or reduced-price school meals.

What if my income is not always the same? List the amount that you normally get. If you normally get overtime, include it, but not if you get overtime only sometimes. For seasonal work, write in the total annual income.

Will the income information or case number I give be checked? It may be. We may also ask you to send written proof.

How will the information be kept? Information you provide on the form, and your child's approval for meal benefits, will be protected as private data. For more information see the back page of the Application for Educational Benefits.

If I don't qualify now, may I apply later? Yes. Please complete an application at any time if your income goes down, your household size goes up, or you start getting SNAP, MFIP or FDPIR benefits.

Please provide the information requested about children's racial identity and ethnicity, which helps to make sure we are fully serving our community. This information is not required for approval of school meal benefits.

If you have other questions or need help, email kari.rubitchung@jccschools.net or call 507-847-6637.

How to Complete the Application for Educational Benefits

Complete the Application for Educational Benefits form for school year 2022-23 if any of the following applies to your household:

- Any household member currently participates in the Minnesota Family Investment Program (MFIP), or the Supplemental Nutrition Assistance Program (SNAP), or the Food Distribution Program on Indian Reservations (FDPIR) or
- The household includes one or more foster children (a welfare agency or court has legal responsibility for the child) or
- The total income of household members is within the guidelines shown below (gross earnings before deductions, not take-home pay). Do not include as income: foster care payments, federal education benefits, MFIP payments, or value of assistance received from SNAP, WIC, or FDPIR. Military: Do not include combat pay or assistance from the Military Privatized Housing Initiative. The income guidelines are effective from July 1, 2022 through June 30, 2023.

Maximum Total Income

Household size	\$ Per Year	\$ Per Month	\$ Twice Per Month	\$ Per 2 Weeks	\$ Per Week
1	25,142	2,096	1,048	967	484
2	33,874	2,823	1,412	1,303	652
3	42,606	3,551	1,776	1,639	820
4	51,338	4,279	2,140	1,975	988
5	60,070	5,006	2,503	2,311	1,156
6	68,802	5,734	2,867	2,647	1,324
7	77,534	6,462	3,231	2,983	1,492
8	86,266	7,189	3,595	3,318	1,659
Add for each additional person	8,732	728	364	336	168

Step 1: Children

List all infants and children in the household, their school and grade if applicable, and birthdate. Attach an additional page if needed to list all children. Check the box if a child is in foster care (a welfare agency or court has legal responsibility for the child).

Step 2: Case Number

If any household member currently participates in SNAP, MFIP or FDPIR, write in the case number and then go to Step 4. If you do not participate in any of these programs, leave Step 2 blank and continue on to Step 3.

Step 3: Adult and Child Incomes / Last 4 Digits of Social Security Number

- **Social Security Number/Total Household Members.** An adult household member must provide the last four digits of their Social Security number or check the box if they do not have a Social Security number. Report the total number of household members and ensure all household members are listed individually on the application in the child or adult section as applicable.
- **Child Income.** If any children in the household have regular income, such as SSI or part-time jobs, list the total amount of regular incomes received by all children, and check the box for the frequency: weekly, bi-weekly, twice a month, or monthly. Do not include occasional earnings like babysitting or lawn mowing.
- **Adult income.** Report the names of adult household members and income earned in this section.
 - List all adults living in the household not listed in Step 1, whether related or not, such as grandparents, relatives, or friends.
 - **Gross Earnings from Work.** This is usually the money received from working at jobs where a paycheck is received. For each income, check the box to show how often the income is received: weekly, bi-weekly, twice per month, or monthly.
 - List gross incomes before deductions, not take-home pay. Do not list an hourly wage rate. For adults with no income to report, enter a '0' or leave the section blank. For seasonal work, write in the total annual income.
 - **Are you Self-Employed or a Farmer?** List the net income per month or year after business expenses. Do not list the same income twice on the application. A loss from farm or self-employment must be listed as 0 income and does not reduce other income.
 - **Any Other Gross Income.** List gross incomes before deductions from all other sources, such as SSI, unemployment, child support, public assistance, social security, rental income or annuities.

Step 4: Signature and Contact Information An adult household member must sign the form. If you do not want your information to be shared with Minnesota Health Care Programs, check the "Don't share" box in Step 4.

Optional: Please provide the information on ethnicity and race that is requested on the second page of the form. This information is not required and does not affect approval for school meal benefits. The information helps to ensure we are meeting civil rights requirements and fully serving our community.