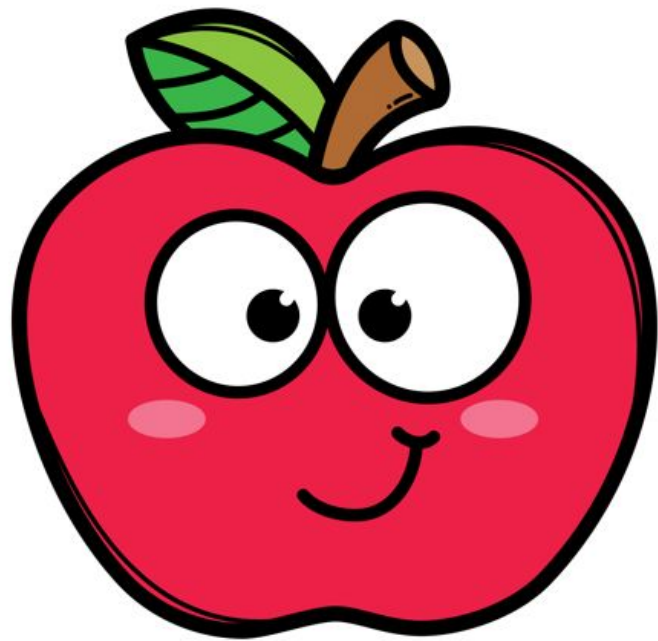


1st Grade Parent Meeting

Wednesday August 21, 2024 at 3:30 p.m.

1st Grade Team

- Ms. Peavy
- Ms. Simmons
- Mrs. Jones
- Mrs. Wilson
- Mrs. Herrington



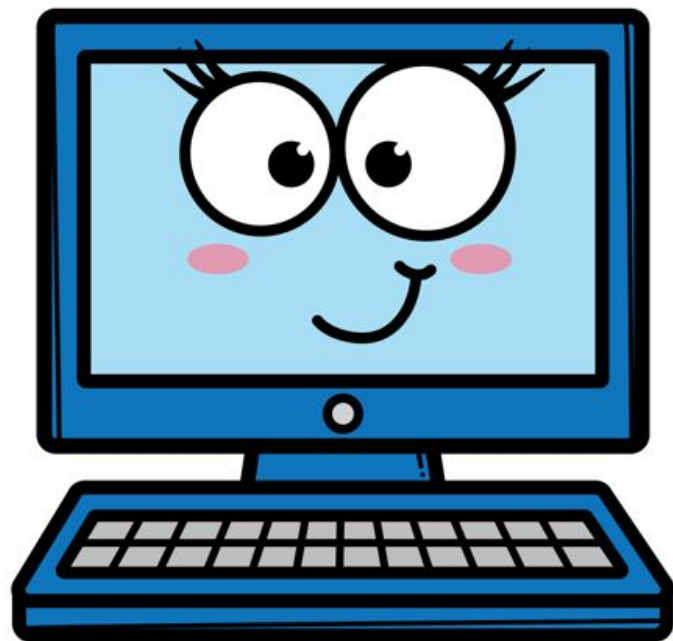


Schedules

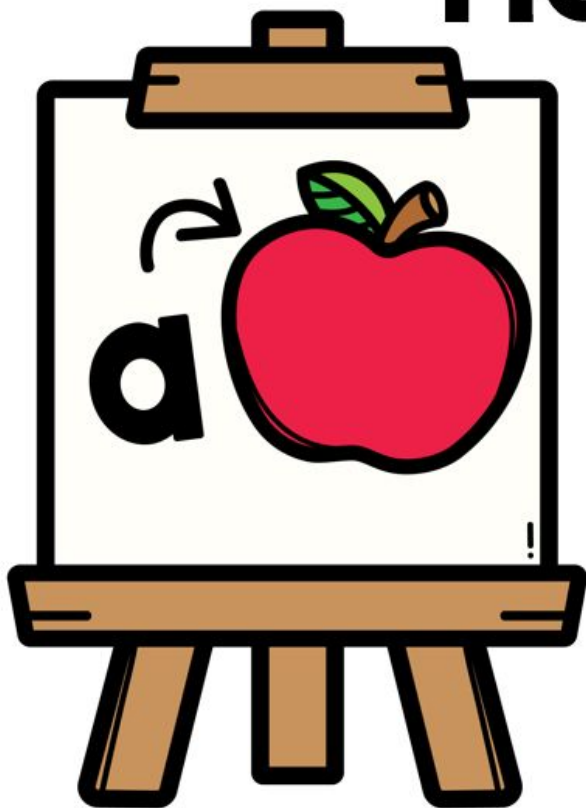
- Arrival: 7:45
 - Tardy: 8:10
- PE: 9:15/9:45
- Lunch: 12:25
- Dismissal: 2:45

Communication

- Dojo/Remind - Please Join!
- Daily Folders - Please sign behavior logs daily and check folders each day.
- Email -
 - Peavy: mepeavy@mcpss.com
 - Simmons: ssimmons@mcpss.com
 - Jones: aljones@mcpss.com
 - Wilson: kwilson2@mcpss.com
 - Herrington: mherrington@mcpss.com
 - Streeter: astreeter@mcpss.com



Homework



- Homework is given Monday - Thursday.
- It is to be completed by the STUDENT.
- It is kept very consistent so that it is easy for the student to complete.
 - Math Page = Worksheet in Folder
- Math Lesson is from the book sent home.

Name _____

LESSON 8.4
More Practice/
Homework

**Represent Data with
Tally Charts**

ONLINE
Video Tutorials and
Interactive Examples

MP Attend to Precision Use the picture to make a tally chart.

A decorative graphic consisting of several overlapping circles of varying shades of gray, arranged in a grid-like pattern.

Uniform

- Girls:
 - Plaid Jumper
 - White Peter Pan Collar Shirt
 - Blue Shoes or Dirty Buck Shoes
 - Red Socks
 - Red Council Sweater
- Boys
 - Khaki Pants
 - White Button Shirt
 - Dirty Buck Shoes
 - Tan Socks
 - Red Belt
 - Dirty Buck Shoes
- PE Uniform
 - Red COUNCIL Shorts
 - White COUNCIL Shirt
 - White Tennis Shoes
 - Any Council Shirt (Spring Fling, Grandparents Day etc. can be worn on Friday at PE)

Accessories:

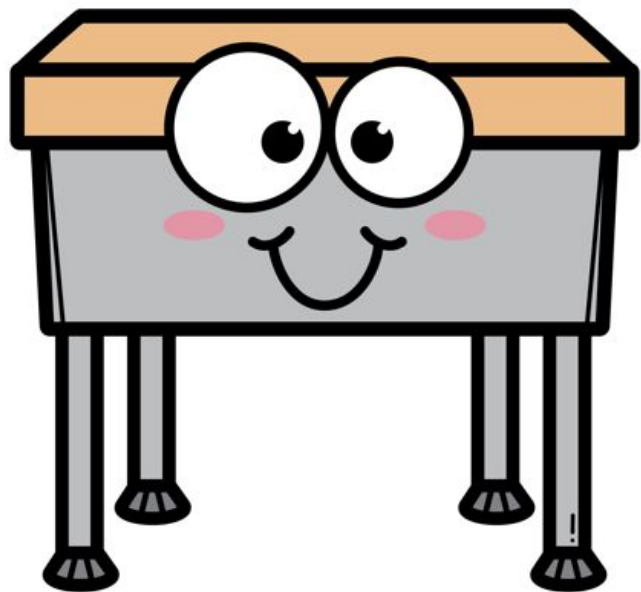
- Must be Red, Navy, or Blue
- No Jewelry except for stud earrings



Winter:

- COUNCIL Sweatshirts and Sweatpants may be worn to PE.
- Girls may not wear Sweatpants under jumper.

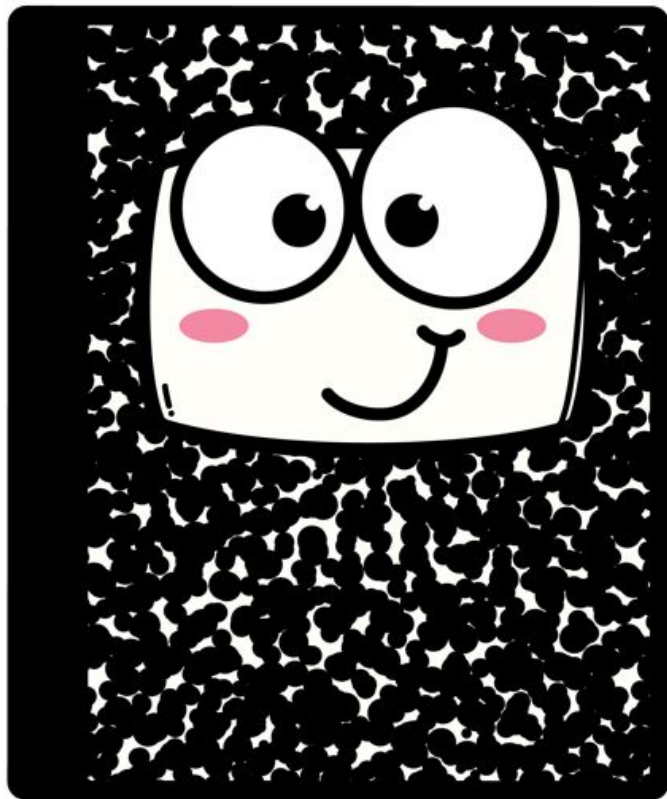
Grading



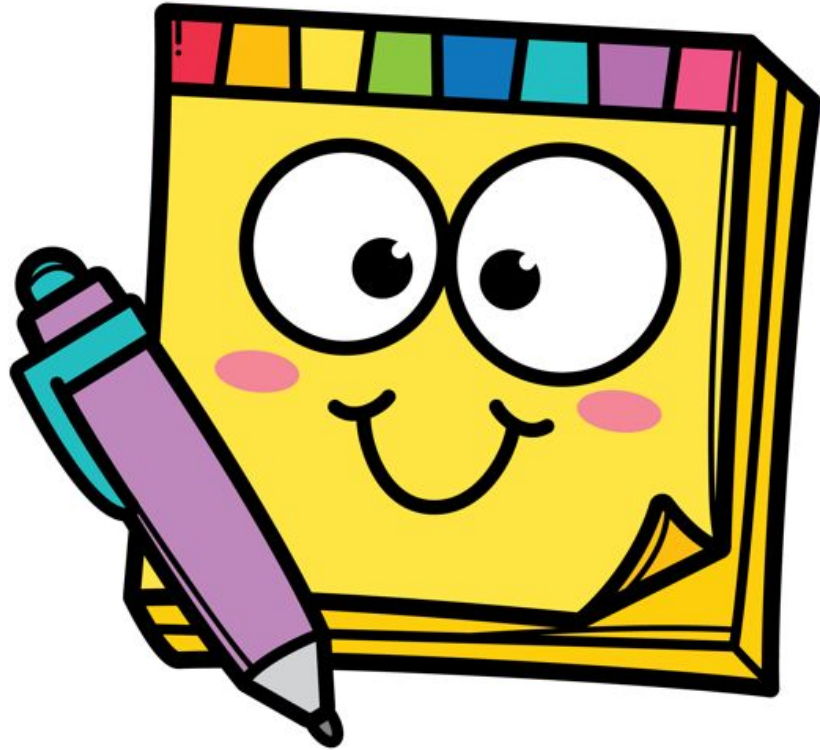
	Major	Minor	Additional
Reading	60% MCPSS Open Court Assessments	30% Teacher Chosen Open Court Assessments and High Frequency Words	10% Specific Spelling Tests
Math	60% MCPSS HMH Assessments	30% Teacher Created Assessments	10% Fact Drills
ELA	60% Writing Assessments MCPSS Open Court Grammar	30% Specific Grammar Tests, Handwriting, and Average of ALL Spelling Tests	10% Prewriting Activities
Science	60% Teacher Created Assessments and IB Projects	40% Teacher Created Assessments	
Social Students	60% Teacher Created Assessments and IB Projects	40% Teacher Created Assessments	
Social Development	60% Behavior	40% Homework	

CARP

1. Read a book within reading level.
 - This can be their library book or any other book that they choose.
 - To find out if a book is on their level, you can look it up on ARBookfinder.com
 - They can not take tests on books below their level or too high above.
2. Fill out the Reading Log.
3. Your child will take the test at school.
 - They can not look back in the book unless it is a **NON-FICTION** book.
4. Repeat until they have met their goal!



Allergies



• Very Important...
IF your child is allergic to or you don't want them to have something, please let me know. If they have any allergies or medications, these need to be checked in by the nurse.

Dismissal

- If your child has a different dismissal location, please let your teacher know immediately!





Questions?

Once all questions
are answered.
Please go to your
child's classroom
to sign up for
conferences!