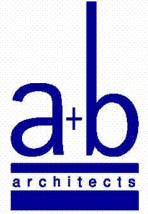


P.O. Box 665 – 117 West Main Street  
Hahira, GA 31632

Phone: 229-585-9018  
E-mail:  
mail@altmanbarrettarchitects.com



# **Letter of Transmittal**

**TO: Plan Holders**

**FROM: Keith Barrett**

**DATE: January 13, 2025**

**SUBJECT:** Addendum 5  
High School Addition To  
Echols K-8 School  
For  
Echols County Schools

**WE ARE SENDING YOU:**

- Enclosed
- Prints
- Change order

**7 Pages via EMAIL (including cover)**  
 Specifications

**ENCLOSED:**

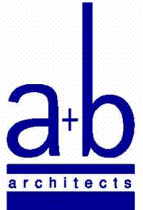
<u>COPIES</u>	<u>DATE</u>	<u>DESCRIPTION</u>
1	1/13/2025	Addendum 5

**Transmitted as checked below:**

- |  |  |
|--|--|
| <input checked="" type="checkbox"/> For your use | <input type="checkbox"/> No exceptions taken |
| <input type="checkbox"/> As requested            | <input type="checkbox"/> Exceptions noted    |
| <input type="checkbox"/> For your information    | <input type="checkbox"/> Resubmit            |
| <input type="checkbox"/> For review & comment    |  |

**REMARKS:**

**COPY :** A+B File 23030 / A-1



**ECHOLS COUNTY SCHOOLS**

**HIGH SCHOOL ADDITION TO  
ECHOLS K-8 SCHOOL  
For  
Echols County Schools**

**ADDENDUM NO. 5  
January 13, 2025**

**REVISIONS TO ADDENDUM 4:**

- 1) Item 3) Specification 001116 INVITATION TO BID:
  - a) Add 1.08 Non-Collusion Affidavit. Non-Collusion Affidavit is attached and shall be submitted with bid form.
  - b) Add 1.09 E-Verify. E-Verify form is attached and shall be submitted with bid form.

**REVISIONS TO THE DRAWINGS:**

- 2) Sheet E3001: Replace Sheet in its entirety. Summary of Changes are as follows:
  - a) Add receptacle circuit and devices for educational camera system.
  - b) Add keyed notes for associated educational camera system devices.
- 3) Sheet E5200  
Replace Sheet in its entirety. Summary of Changes are as follows:
  - a) Add devices for educational camera system.
  - b) Add educational camera system legend and notes.
- 4) Sheet E6001  
Replace Sheet in its entirety. Summary of Changes are as follows:
  - a) Change circuit eight (8) in Panelboard LCA to reflect additional circuit added for educational camera system devices.

**END**

**NO INFLUENCE AND NON – COLLUSION AFFIDAVIT  
COMPLIANCE WITH LAWS OF GEORGIA**

The undersigned hereby certifies to Echols County Schools that this bid/proposal is in compliance with O.C.G.A.36-91-21(e) and no violation of O.C.G.A. 36-91-21(e) has occurred.

---

*[SUBMITTING COMPANY NAME]*

---

*[AUTHORIZED INDIVIDUAL NAME AND TITLE]*

---

*[SIGNATURE]*

---

*[DATE]*

**E-VERIFY AFFIDAVIT**  
**Contractor Affidavit under O.C.G.A. § 13-10-91(b)(I)**

The undersigned contractor ("Contractor") executes this Affidavit to comply with O.C.G.A § 13-10-91 related to each, every, and any contract to which Contractor is a party with Echols County Schools that is subject to O.C.G.A. § 13-10-91 and hereby verifies its compliance with O.C.G.A. § 13-10-91, attesting as follows:

- a) The Contractor has registered with, is authorized to use, and uses the federal work authorization program commonly known as E-Verify, or any subsequent replacement program;
- b) The Contractor will continue to use the federal work authorization program throughout the contract period, including any renewal or extension thereof;
- c) The Contractor will notify Echols County Schools in the event the Contractor ceases to utilize the federal work authorization program during the contract period, including renewals or extensions thereof;
- d) The Contractor understands that ceasing to utilize the federal work authorization program constitutes a material breach of Contractor's contract with Echols County Schools;
- e) The Contractor will subcontract for the performance of services in satisfaction of such contract only with subcontractors who complete, sign, notarize, and provide the Subcontractor Affidavit to the Contractor with the information required by O.C.G.A. § 13-10-91(a), (b), and (c) prior to beginning the performance of services;
- f) The Contractor acknowledges and agrees that this Affidavit shall be incorporated into each, every, and any contract(s) with Echols County Schools subject to the provisions of O.C.G.A. § 13-10- 91 to which Contractor is a party after the date hereof without further action or consent by Contractor; and
- g) Contractor acknowledges its responsibility to submit copies of any affidavits, drivers' licenses, and identification cards required pursuant to O.C.G.A. § 13-10-91 to Echols County Schools within five business days of receipt.

\_\_\_\_\_  
Federal Work Authorization User Identification Number

\_\_\_\_\_  
Date of Authorization

\_\_\_\_\_  
Name of Contractor

**I hereby declare under penalty of perjury that the foregoing is true and correct.**

Executed on \_\_\_\_\_, 20\_\_ in \_\_\_\_\_ (city), \_\_\_\_\_ (state).

\_\_\_\_\_  
Signature of Authorized Officer or Agent

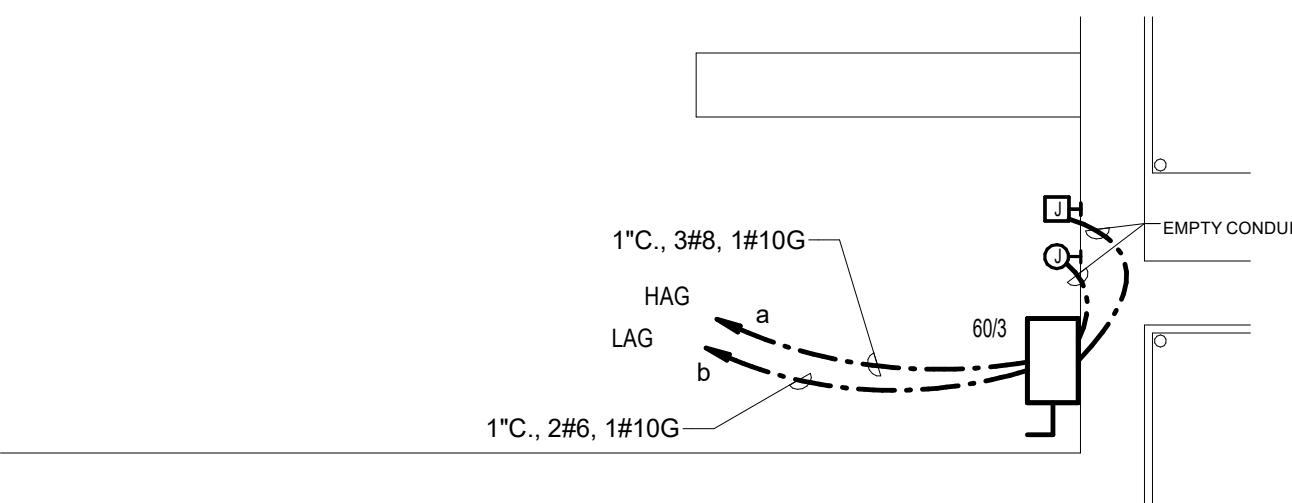
\_\_\_\_\_  
Printed Name and Title of Authorized Officer or Agent

SUBSCRIBED AND SWORN BEFORE ME  
ON THIS THE \_\_\_\_\_ DAY OF \_\_\_\_\_, 20\_\_.

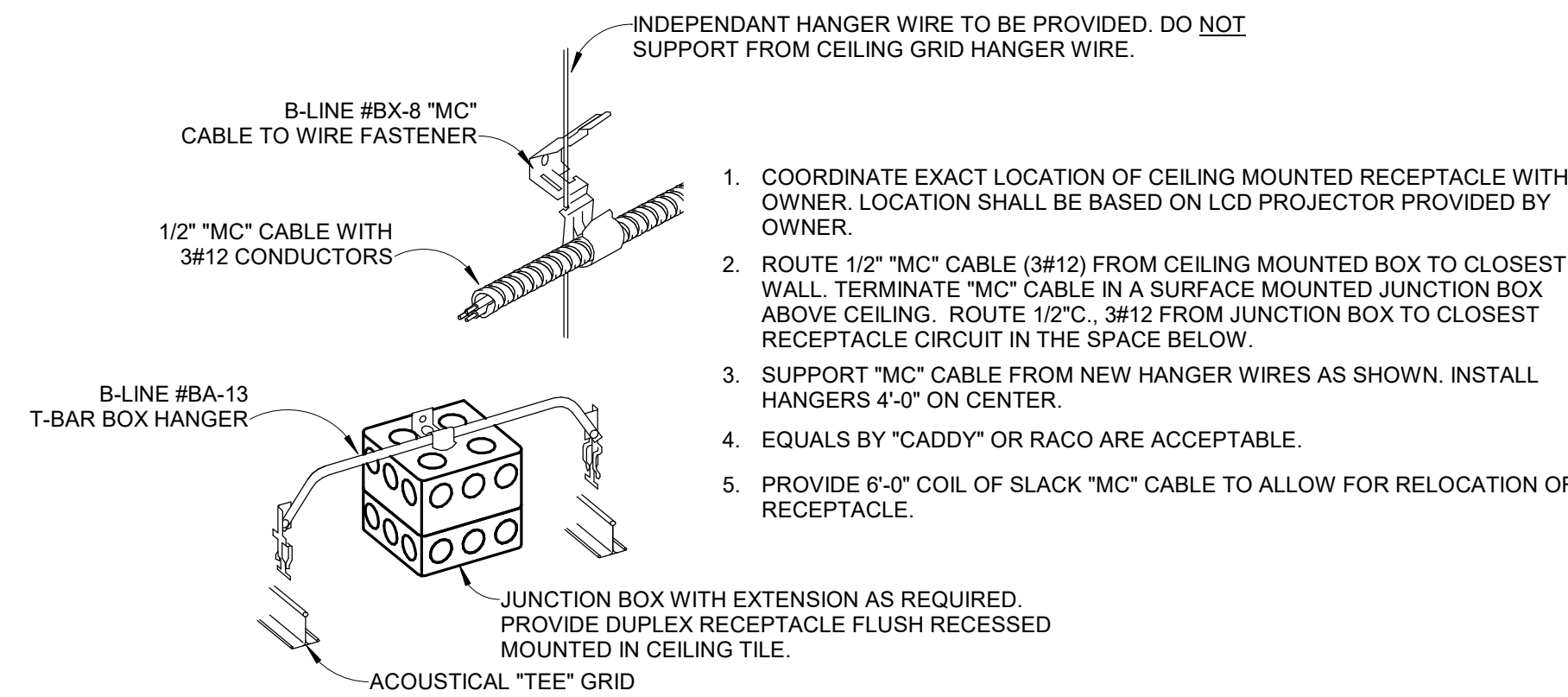
\_\_\_\_\_  
NOTARY PUBLIC

My Commission Expires: \_\_\_\_\_

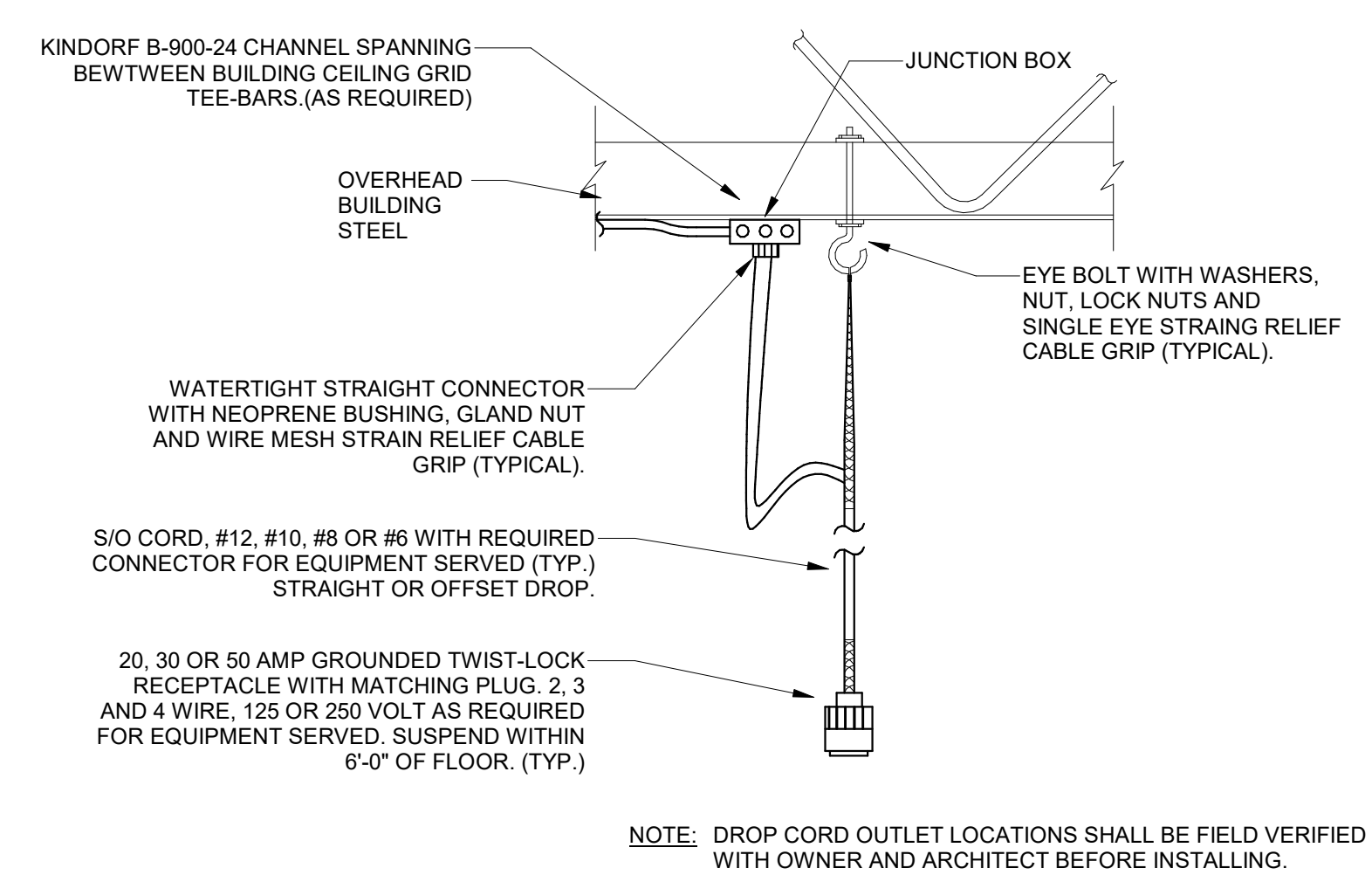
Affix Notarial Seal Here



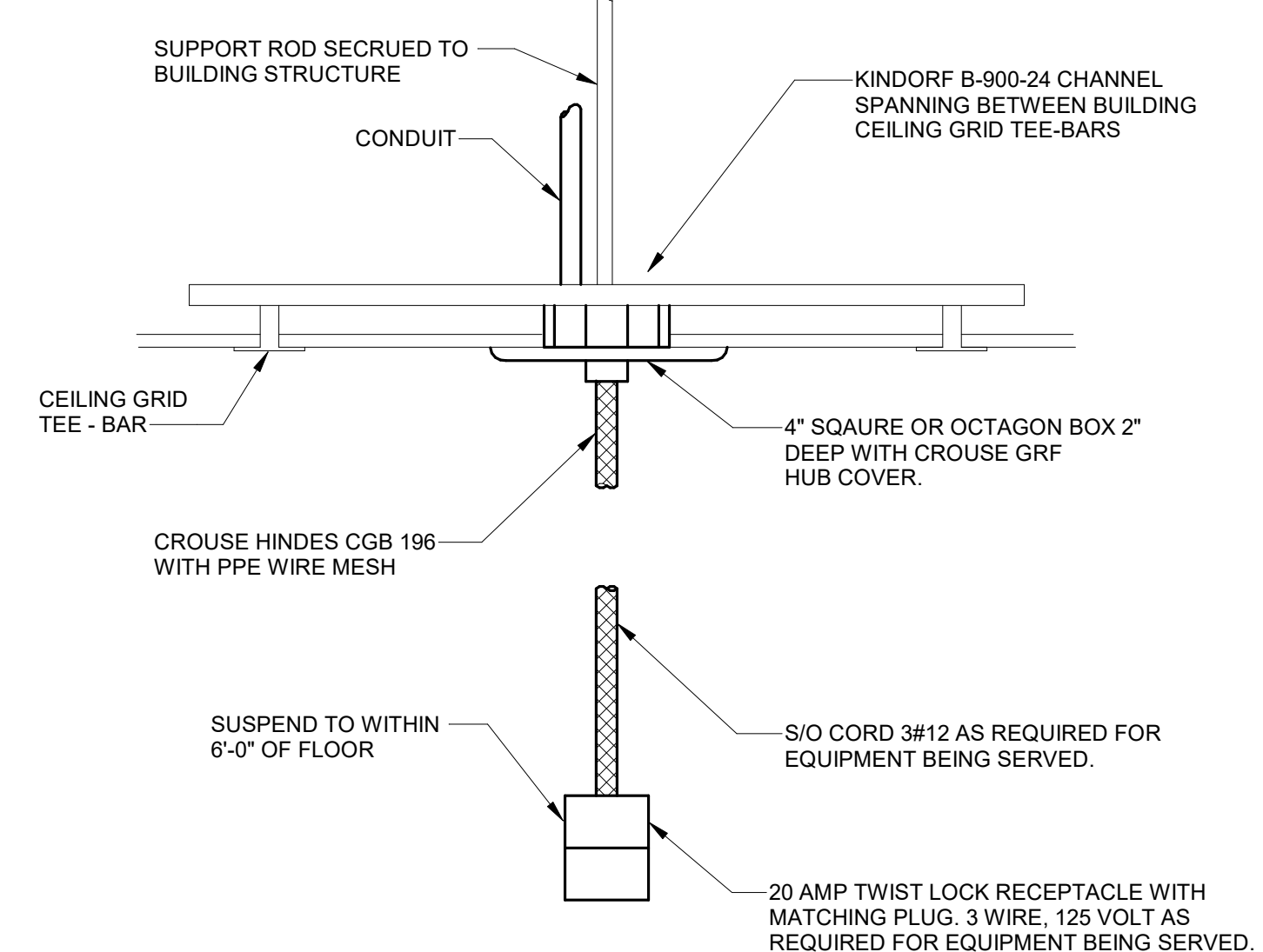
3 POWER PLAN - ENLARGED WELDING BOOTH  
E3001 SCALE: 1/2" = 1'-0"



5 DETAIL - CEILING MOUNTED OUTLET  
E3001 NO SCALE



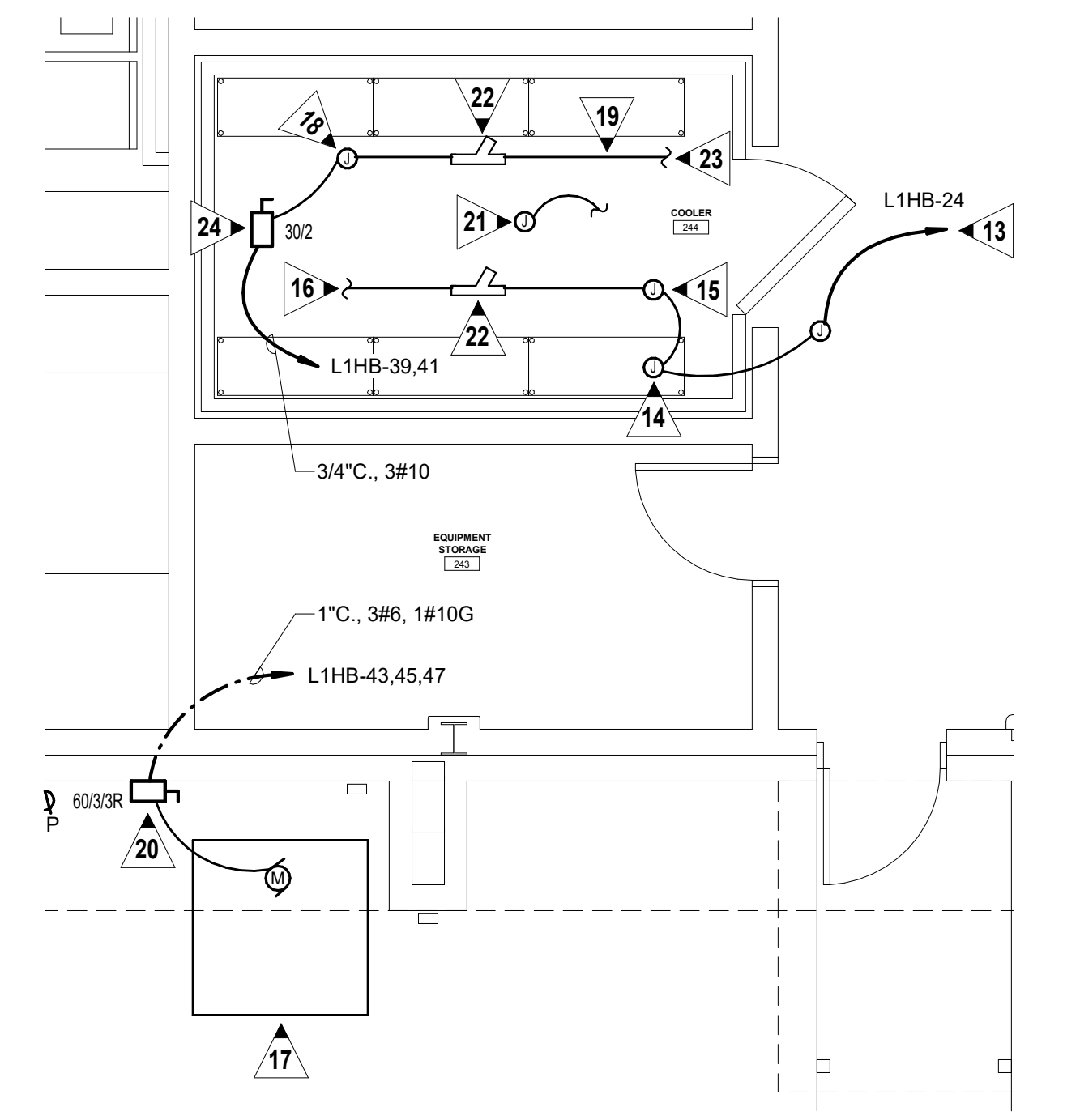
4 DETAIL - SUSPENDED RECEPTACLE (BUILDING STEEL)  
E3001 NO SCALE



6 DETAIL - SUSPENDED RECEPTACLE (CEILING GRID)  
E3001 NO SCALE

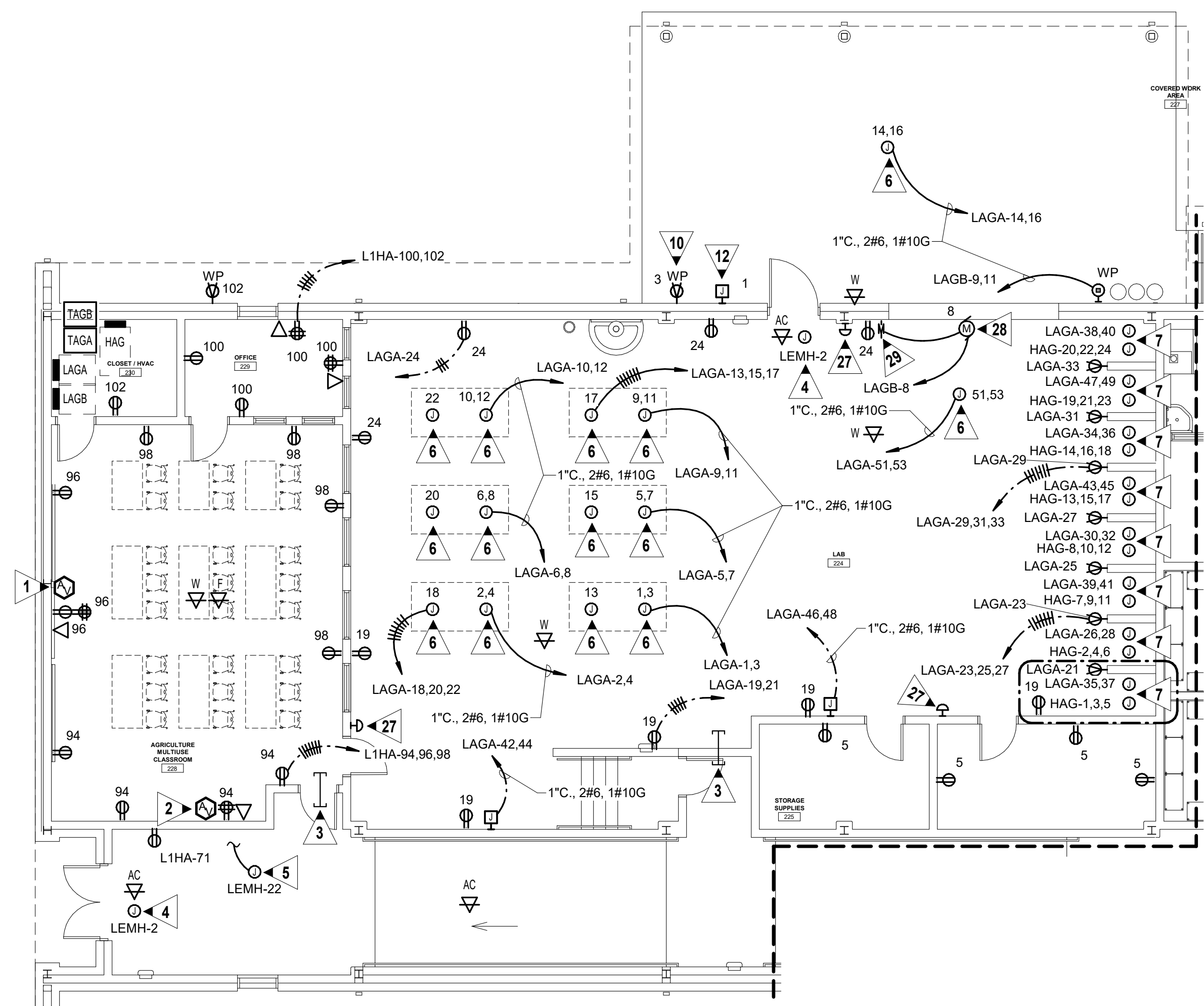
- GENERAL NOTES:**
- VERIFY MOUNTING HEIGHTS OF ALL ELECTRICAL OUTLETS WITH ARCHITECTURAL ELEVATIONS AND MILLWORK DRAWINGS PRIOR TO ROUGH IN.
  - ROUTE 1" CONDUIT FROM ALL MILLWORK/SCIENCE TABLES/FLOOR BOXES WHERE DATA DROPS ARE SHOWN TO ABOVE NEAREST ACCESSIBLE CEILING TO SERVE DATA CABLING.
  - HOMERUN CIRCUITS ARE SHOWN AS NOTED. PROVIDE ALL BRANCH CIRCUIT CONDUIT/CONDUCTORS AS NECESSARY TO CONNECT ALL DEVICES SHOWN ON THE CIRCUIT. PROVIDE DEDICATED NEUTRALS FOR ALL CIRCUITS.

- KEYED NOTES:**
- SEE DETAIL 1/E5202 FOR REQUIREMENTS OF JUNCTION BOX MOUNTED BEHIND MONITOR. STUB UP ONE (1) 1" CONDUIT FROM JUNCTION BOX TO ABOVE CEILING FOR AV CONNECTION TO MONITOR.
  - SEE DETAIL 1/E5202 FOR REQUIREMENTS OF JUNCTION BOX MOUNTED BEHIND TEACHER'S DESK. STUB UP ONE (1) 1" CONDUIT FROM JUNCTION BOX TO ABOVE CEILING FOR AV CONNECTION TO TEACHERS DESK.
  - PROVIDE ONE (1) - TWO INCH (2") EMT SLEEVE ABOVE CEILING WITH PLASTIC BUSHING ON EACH END FOR LOW-VOLTAGE CABLE ROUTING.
  - PROVIDE 120 VOLT POWER FROM CIRCUIT INDICATED FOR ACCESS CONTROLS. SEE DETAIL 3/E5202 FOR ROUGH IN REQUIREMENTS.
  - PROVIDE 120 VOLT POWER FROM CIRCUIT INDICATED TO SMOKE DAMPER(S). REFER TO MECHANICAL DRAWINGS FOR EXACT QUANTITIES AND LOCATIONS.

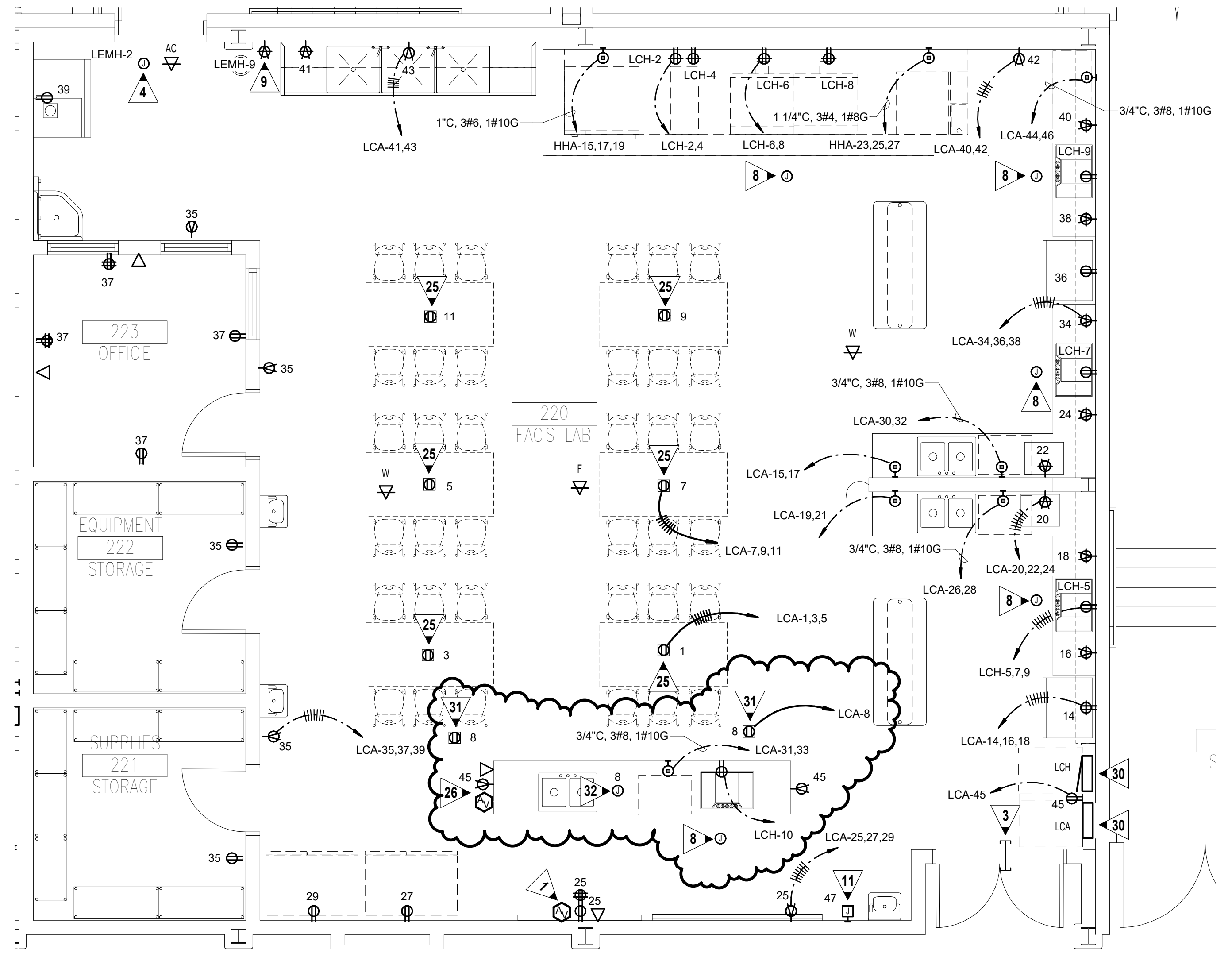


7 POWER PLAN - ENLARGED SCIENCE LAB COOLER  
E3001 SCALE: 1/4" = 1'-0"

- SUSPENDED RECEPTACLE. SEE DETAIL 4/E3001. COORDINATE EXACT SIZE AND REQUIREMENTS WITH OWNER.
- SEE DETAIL 3/E3001 FOR TYPICAL WELDING BOOTH EQUIPMENT LAYOUT.
- INTERLOCK RANGE HOOD FIRE SUPPRESSION SYSTEM WITH SHUNT TRIP BREAKERS IN PANELS IN ORDER TO SHUT OFF POWER WHEN SUPPRESSION SYSTEM IS ACTIVATED. INTERLOCK SUPPRESSION SYSTEM WITH BUILDING FIRE ALARM SYSTEM. COORDINATE LOCATION OF FIRE SUPPRESSION SYSTEM WITH PROVIDER.
- PROVIDE 120 VOLT RECEPTACLE TO SERVE GREASE TRAP ALARM. COORDINATE EXACT LOCATION WITH PLUMBING PRIOR TO ROUGHING IN.
- WEATHERPROOF DUPLEX RECEPTACLE FOR SOLENOID VALVES AT AIR COMPRESSOR. COORDINATE EXACT LOCATION WITH DIVISION 22 PRIOR TO ROUGHING IN.
- PROVIDE 120 VOLT POWER TO UTILITY CONTROLLER. COORDINATE EXACT LOCATION WITH DIVISION 22 PRIOR TO ROUGHING IN.
- PROVIDE 120 VOLT POWER TO ELECTRIC DRAIN VALVE. COORDINATE EXACT LOCATION WITH DIVISION 22 PRIOR TO ROUGHING IN.
- JUNCTION ABOVE CEILING FOR 120 VOLT CONNECTION TO COOLER LIGHTS, DOOR AIR CURTAINS, CONTROLS, ALARM AND TIMER TO BE FURNISHED WITH UNITS.
- PROVIDE FLEX CONNECTION FROM BOX TO UNIT'S CONTROLS, ALARM, AND TIMER.
- JUNCTION BOX ABOVE UNIT FOR CONNECTION TO UNIT LIGHT FIXTURES AND DOOR AIR CURTAIN. CONNECT TO DEVICES VIA "EYS" SEAL FITTING AS SHOWN. DIVISION 26 IS RESPONSIBLE FOR MOUNTING FIXTURES, CONDUIT, CONDUCTORS, AND MAKING ALL CONNECTIONS.
- APPROXIMATE LOCATION OF COOLER CONDENSER. COORDINATE EXACT LOCATION WITH ARCHITECTURAL PLANS PRIOR TO ROUGH-IN. DIVISION 26 IS RESPONSIBLE FOR ADJUSTING ALL CIRCUITRY ROUTING AND DISCONNECT LOCATIONS PER FINAL UNIT LOCATIONS.
- APPROXIMATE LOCATION OF COOLER EVAPORATOR. COORDINATE EXACT LOCATION WITH ARCHITECTURAL PLANS PRIOR TO ROUGH-IN. DIVISION 26 IS RESPONSIBLE FOR ADJUSTING ALL CIRCUITRY ROUTING AND DISCONNECT LOCATIONS PER FINAL UNIT LOCATIONS.
- PROVIDE ONE (1) 3/4" FOR CONTROL CABLING BETWEEN EVAPORATOR COIL(S) AND EXTERIOR CONDENSER. COORDINATE REQUIRED CABLING WITH COOLER PROVIDER PRIOR TO ROUGH IN. CABLING AND CONNECTIONS BY DIVISION 26.
- 60A/3R DISCONNECT FOR CONDENSER UNIT. COORDINATE EXACT LOCATION WITH ARCHITECTURAL DRAWINGS.
- 3/4" TO TELEPHONE BACKBOARD FOR ALARM CONNECTIONS TO DIALER. WIRING CONNECTIONS TO INTRUSION ALARM PANEL BY DIVISION 26.
- "EYS" SEAL-OFF FITTING. (TYPICAL FOR ALL SHOWN)
- ROUTE TO CONDENSER UNIT LOCATED ON EXTERIOR WALL.
- 30A/2 DISCONNECT TO SERVE COOLER EVAPORATOR. COORDINATE LOCATION WITH OWNER PRIOR TO ROUGHING IN.
- SUSPENDED OUTLETS. SEE DETAIL 5 AND 6 PER THIS SHEET. COORDINATE EXACT SIZE AND REQUIREMENTS WITH OWNER.
- SEE DETAIL 1/E5202 FOR REQUIREMENTS OF JUNCTION BOX MOUNTED BEHIND TEACHER'S DESK. ROUTE FROM NEAREST WALL AND STUB UP ONE (1) 1" CONDUIT FROM JUNCTION BOX TO ABOVE CEILING TO SERVE AV AND DATA OUTLET AT THIS LOCATION. MOUNT DEVICES AT 24" A.F.F. SEE ARCHITECTURAL ELEVATION T/AS100 FOR EXACT LOCATION OF DEVICES.
- RED MUSHROOM KILL SWITCH LABELED AS "EMERGENCY SHUT OFF". CONNECT TO SHUNT TRIP BREAKER IN 480/277 PANEL "A07" SERVING THIS AREA.
- PROVIDE 120V CONNECTION TO OVERHEAD MOTORIZED DOOR. CONNECT TO CONTROLLER AS SHOWN AND CONNECT TO ANY ADDITIONAL SAFETY EYE, ETC. FEATURES PER MANUFACTURER'S SHOP DRAWINGS. PROVIDE LABEL ON CONTROL TO READ "MOTORIZED DOOR"
- PROVIDE MOMENTARY CONTACT (RAISE/LOWER) SWITCH WITH CENTER OFF FOR CONTROL OF MOTORIZED DOOR.
- STUB UP FOUR (4) - ONE INCH (1") CONDUITS TO ABOVE CEILING FROM EACH PANEL (LCA AND LCH) FOR FUTURE USE.
- PROVIDE CEILING MOUNTED RECEPTACLE FOR EDUCATIONAL CAMERA SYSTEM TELEVISION. COORDINATE EXACT LOCATION WITH ARCHITECT AND OWNER PRIOR TO ROUGHING IN.
- PROVIDE RECEPTACLE MOUNTED ABOVE CEILING FOR EDUCATIONAL CAMERA SYSTEM CAMERA. COORDINATE EXACT LOCATION WITH ARCHITECT AND OWNER PRIOR TO ROUGHING IN.



1 POWER PLAN - LEVEL 1 (CONT.)  
E3001 SCALE: 1/8" = 1'-0"



2 POWER PLAN - ENLARGED FACS LAB  
E3001 SCALE: 1/4" = 1'-0"

Altman + Barrett



10-18-24

Altman + Barrett  
a r c h i t e c t s  
P.O. BOX 665 - 117 WEST MAIN ST.  
HAHIRA, GEORGIA 31632  
PHONE # (229) 585-9018

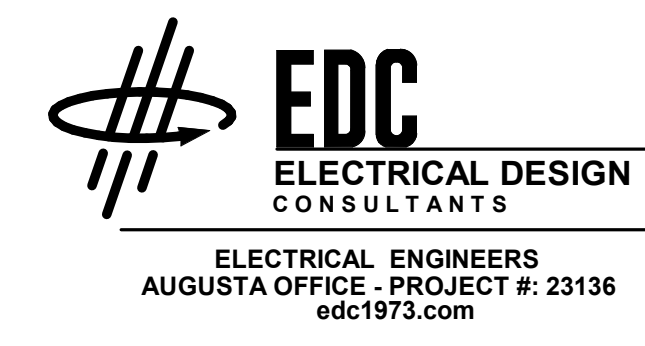
DATE: 10.16.24  
DRAWN: B. HANLEY  
CHECKED: J. FLEMING  
REVISIONS: 1/10/25  
www.altmanbarrettarchitects.com

HIGH SCHOOL ADDITION  
TO ECHOLS K-8 SCHOOL  
FOR ECHOLS COUNTY SCHOOLS  
100 WILDCAT CIRCLE  
STATENVILLE, GEORGIA 31648

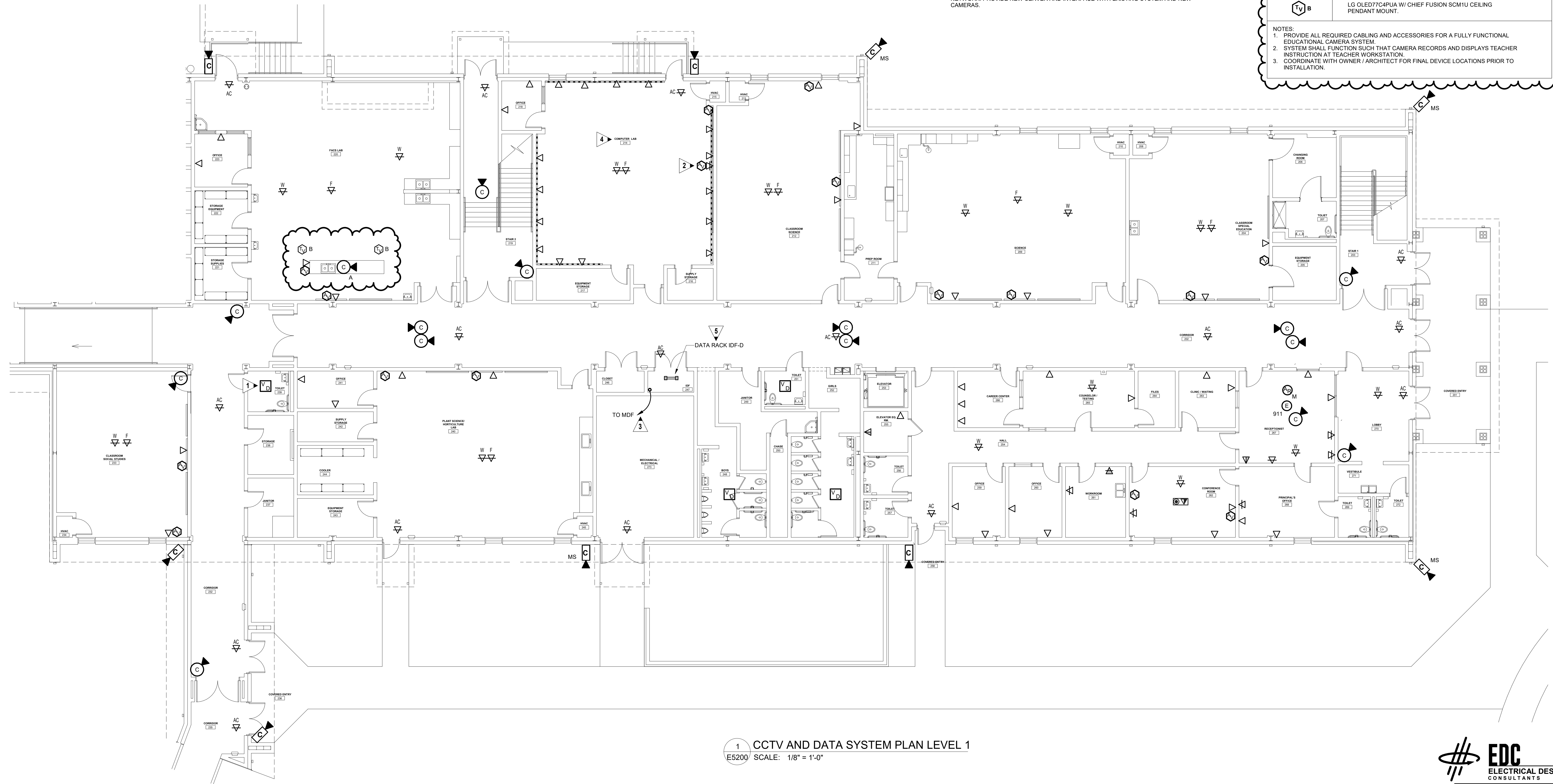
CHECK SET  
FACILITY CODE 650-1050  
IU'S 18 FTE 275

E3001

PROJECT NO: 23030



A l t m a n + B a r r e t t A r c h i t e c t s



**GENERAL NOTES:**

1. TELECOMMUNICATIONS SHALL BE USED TO REFER TO ALL DATA/VOICE CABLING.
2. SEE 1/8" AND 1/4" POWER PLANS FOR DATA/VOICE BACKBOX LOCATIONS.
3. ALL DATA DROPS LOCATED IN AREAS WITH EXPOSED STRUCTURE SHALL BE ROUTED IN CONDUITS.
4. STUB UP ONE (1)-1". FROM ALL FLOOR BOXES SHOWN ON PLANS TO ABOVE ACCESSIBLE CEILING.
5. COORDINATE ALL FIBER TERMINATION REQUIREMENTS WITH OWNER AND PROVIDE FIBER CONNECTOR TYPE AS REQUIRED.
6. ALL LOW VOLTAGE SYSTEM STUB UP CONDUITS SHALL HAVE A 90 DEGREE ELBOW TURNED OUT ABOVE CEILING AND TERMINATED WITH AN ARLINGTON BUSHING.
7. LOW VOLTAGE SYSTEMS CONDUIT REQUIREMENTS:
  - A. FIRE ALARM SYSTEM CABLING SHALL BE PLENUM RATED AND ROUTED AND ROUTED IN J-HOOKS ABOVE ACOUSTICAL TILE CEILINGS. WHERE CABLE IS ROUTED CONCEALED DOWN IN WALLS, ABOVE INACCESSIBLE CEILINGS OR IN AREAS WITH EXPOSED STRUCTURE (NO ACOUSTICAL TILE CEILING), FIRE ALARM CABLING SHALL BE INSTALLED IN CONDUIT.
  - B. ALL DATA/VOICE BACKBOXES AND STUB UP CONDUIT SHALL BE PAINTED BLUE (ENTIRELY).
  - C. OTHER THAN FIRE ALARM SYSTEM CABLING, ALL OTHER LOW VOLTAGE CABLING SHALL BE PLENUM RATED AND ROUTED IN CABLE TRAY OR J-HOOKS ABOVE ACOUSTICAL TILE CEILINGS. WHERE CABLE IS ROUTED CONCEALED DOWN IN WALLS, ABOVE INACCESSIBLE CEILINGS OR IN AREAS WITH EXPOSED STRUCTURE (NO ACOUSTICAL TILE CEILING), LOW VOLTAGE CABLING SHALL BE INSTALLED IN CONDUIT.
8. COORDINATE MOUNTING HEIGHTS OF ALL EXTERIOR CAMERAS WITH ARCHITECTURAL ELEVATIONS.
9. CCTV SYSTEM IS IN CONTRACT. ROUGH-IN OF BACKBOXES AND CONDUIT BY DIVISION 26.
10. EXACT CAMERA LOCATION AND MOUNTING HEIGHT SHALL BE FIELD COORDINATED PRIOR TO ROUGH-IN. CONTRACTOR SHALL PROVIDE A FIELD POWERED CAMERA CONNECTED TO PORTABLE MONITOR. OWNER/ARCHITECT SHALL VIEW PROPOSED LOCATION OF EACH CAMERA UTILIZING THIS PORTABLE CAMERA/MONITOR AS A "MOCK-UP" PRIOR TO APPROVING EACH LOCATION. EXACT CAMERA LOCATION AND ADJUSTMENT SHALL BE MADE BASED UPON SUCH COORDINATION.
11. CONNECT ALL NEW CCTV CAMERAS TO THE EXISTING OPENEYE CCTV SYSTEM VIA THE NETWORK. PROVIDE NEW SERVER AND INTERFACE WITH EXISTING SYSTEM AND NEW CAMERAS.

**KEYED NOTES:**

1. INTEGRATE VAPE DETECTORS WITH CCTV SYSTEM. TYPICAL FOR ALL VAPE DETECTORS SHOWN.
2. AV OUTLET AND DATA OUTLET TO SERVE MONITOR AT THIS LOCATION SHALL BE MOUNTED ABOVE COMPUTER MONITORS AT 84" A.F.F.. COORDINATE EXACT HEIGHT AND LOCATION WITH OWNER.
3. PROVIDE TWO INCH (2") - PLENUM RATED INNERDUCT, ONE (1) - 12 STRAND MULTI-MODE (OM4) FIBER TO MDF IN EXISTING SCHOOL BUILDING. ROUTE CAT 3 WITH THE CABLE FROM IDF TO TELEPHONE BACKBOX/IDF IN EXISTING SCHOOL MDF CLOSET. SEE SHEET E1001 FOR EXISTING MDF LOCATION.
4. DATA DROPS SHOWN ON WALLS IN THIS SPACE ARE ROUTED IN RACEWAY UNLESS NOTED OTHERWISE. SEE KEYED NOTE NINE (9) ON SHEET E3001.
5. ROUTE ALL LEVEL ONE (1) DATA CABLING TO DATA RACK IDF-D.

**CCTV CAMERA LEGEND**

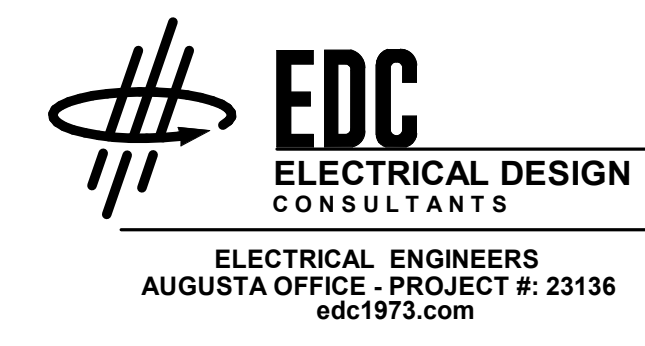
	CCTV SYSTEM INTERIOR CAMERA, WALL OR CEILING MOUNTED.
	CCTV SYSTEM EXTERIOR WEATHERPROOF CAMERA, WALL MOUNTED.
	CCTV SYSTEM EXTERIOR MULTISENSOR WEATHERPROOF CAMERA, WALL MOUNTED.

**EDUCATIONAL CAMERA SYSTEM LEGEND**

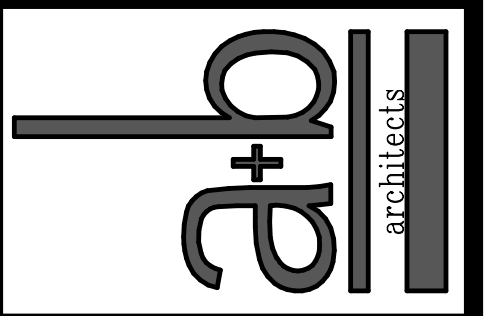
	VADDIO PRIMESHOT HDMI PTZ CAMERA W/ CRESTRON HD-DA2-4KZ (OR EQUALS BY EXTRON).
	LG OLED77C4PUA W/ CHIEF FUSION SCM1U CEILING PENDANT MOUNT.

- NOTES:
1. PROVIDE ALL REQUIRED CABLING AND ACCESSORIES FOR A FULLY FUNCTIONAL EDUCATIONAL CAMERA SYSTEM.
  2. SYSTEM SHALL FUNCTION SUCH THAT CAMERA RECORDS AND DISPLAYS TEACHER INSTRUCTION AT TEACHER WORKSTATION.
  3. COORDINATE WITH OWNER / ARCHITECT FOR FINAL DEVICE LOCATIONS PRIOR TO INSTALLATION.

1 CCTV AND DATA SYSTEM PLAN LEVEL 1  
E5200 SCALE: 1/8" = 1'-0"



Altman + Barrett



Altman + Barrett  
a r c h i t e c t s  
P.O. BOX 665 - 117 WEST MAIN ST.  
HAHIRA, GEORGIA 31632  
PHONE # (229) 585-9018

DATE: 10.16.24  
DRAWN: B. HANLEY  
CHECKED: J. FLEMING  
REVISIONS: 1/10/25  
www.altmanbarrettarchitects.com

HIGH SCHOOL ADDITION  
TO ECHOLS K-8 SCHOOL  
FOR ECHOLS COUNTY SCHOOLS  
100 WILDCAT CIRCLE  
STATENVILLE, GEORGIA 31648

CHECK SET  
FACILITY CODE 650-1050  
IU'S 18 FTE 275

E5200

PROJECT NO: 23030

PANELBOARD: L1HA

LOCATION: MECH/ELEC - 273
VOLTAGE: 208Y/120 V, 3 ø 4 W.
MOUNTING: SURFACE NEMA 1
A.I.C. RATING: 10,000 AMPS SYMMETRICAL
MAIN DEVICE: 350.0 A MAIN CB
BUS AMPS: 350 AMPS
SPECIAL: PROVIDE FEED THRU LUGS
FED FROM: THA

Table with columns: LOAD NAME, NOTE, BKR, P, CKT, A, B, C, CKT, P, BKR, NOTE, LOAD NAME. Lists various electrical loads like WASHER, RECEPTACLES, WATER COOLER, etc.

Summary table with columns: LOAD CLASSIFICATION, CONNECTED, DEMAND, ESTIMATED, PANEL TOTALS. Includes values for HVAC, RECEPTACLES, and MTR.

NOTES:
\*G - INDICATED PROVIDE GFCI BREAKER.

PANELBOARD: L2A

LOCATION: CLOSET - 333
VOLTAGE: 208Y/120 V, 3 ø 4 W.
MOUNTING: SURFACE NEMA 1
A.I.C. RATING: 10,000 AMPS SYMMETRICAL
MAIN DEVICE: 200.0 A MLO
BUS AMPS: 200 AMPS
SPECIAL:
FED FROM: L2A

Table with columns: LOAD NAME, NOTE, BKR, P, CKT, A, B, C, CKT, P, BKR, NOTE, LOAD NAME. Lists loads like WATER COOLER, RECEPTACLES, SPARE, FCU-325, etc.

Summary table with columns: LOAD CLASSIFICATION, CONNECTED, DEMAND, ESTIMATED, PANEL TOTALS. Includes values for HVAC and RECEPTACLES.

NOTES:
\*G - INDICATED PROVIDE GFCI BREAKER.

PANELBOARD: LAGA

LOCATION: CLOSET/HVAC - 230
VOLTAGE: 208Y/120 V, 3 ø 4 W.
MOUNTING: SURFACE NEMA 1
A.I.C. RATING: 10,000 AMPS SYMMETRICAL
MAIN DEVICE: 350.0 A MAIN CB
BUS AMPS: 350 AMPS
SPECIAL: SHUNT-TRIP MAIN BREAKER
FED FROM: TAGA

Table with columns: LOAD NAME, NOTE, BKR, P, CKT, A, B, C, CKT, P, BKR, NOTE, LOAD NAME. Lists loads like CEILING RCPT, VAC, M-AC, HP-228, etc.

Summary table with columns: LOAD CLASSIFICATION, CONNECTED, DEMAND, ESTIMATED, PANEL TOTALS. Includes values for HVAC and RECEPTACLES.

NOTES:
\*G - INDICATED PROVIDE GFCI BREAKER
PROVIDE SHUNT TRIP MAIN BREAKER AND INTERLOCK WITH EMERGENCY OFF SWITCHES IN LAB 224 TO TURN POWER OFF WHEN ANY PUSH BUTTON IS ACTIVATED.

PANELBOARD: L1HA

LOCATION: MECH/ELEC - 273
VOLTAGE: 208Y/120 V, 3 ø 4 W.
MOUNTING: SURFACE NEMA 1
A.I.C. RATING: 10,000 AMPS SYMMETRICAL
MAIN DEVICE: 350.0 A MLO
BUS AMPS: 350 AMPS
SPECIAL:
FED FROM: L1HA

Table with columns: LOAD NAME, NOTE, BKR, P, CKT, A, B, C, CKT, P, BKR, NOTE, LOAD NAME. Lists loads like KRH-1, RECEPTACLES, WATER COOLER, etc.

Summary table with columns: LOAD CLASSIFICATION, CONNECTED, DEMAND, ESTIMATED, PANEL TOTALS. Includes values for HVAC and RECEPTACLES.

NOTES:
\*G - INDICATED PROVIDE GFCI BREAKER.

PANELBOARD: LCA

LOCATION: FACS LAB - 220
VOLTAGE: 208Y/120 V, 3 ø 4 W.
MOUNTING: RECESSED NEMA 1
A.I.C. RATING: 10,000 AMPS SYMMETRICAL
MAIN DEVICE: 225.0 A MLO
BUS AMPS: 225 AMPS
SPECIAL:
FED FROM: L1HB

Table with columns: LOAD NAME, NOTE, BKR, P, CKT, A, B, C, CKT, P, BKR, NOTE, LOAD NAME. Lists loads like CEILING RCPT, MICRO PIZZA OVEN, RANGE HOODS, etc.

Summary table with columns: LOAD CLASSIFICATION, CONNECTED, DEMAND, ESTIMATED, PANEL TOTALS. Includes values for RECEPTACLES and MTR.

NOTES:
\*G - INDICATED PROVIDE GFCI BREAKER
\*G - INDICATED PROVIDE SHUNT TRIP BREAKER AND INTERLOCK WITH HOOD EXTINGUISHING SYSTEM AND FIRE ALARM SYSTEM.

PANELBOARD: LAGB

LOCATION: CLOSET/HVAC - 230
VOLTAGE: 208Y/120 V, 3 ø 4 W.
MOUNTING: SURFACE NEMA 1
A.I.C. RATING: 10,000 AMPS SYMMETRICAL
MAIN DEVICE: 225.0 A MLO
BUS AMPS: 225 AMPS
SPECIAL:
FED FROM:

Table with columns: LOAD NAME, NOTE, BKR, P, CKT, A, B, C, CKT, P, BKR, NOTE, LOAD NAME. Lists loads like ELEC DRAIN VALVE, VAC, M-AC, HP-228, etc.

Summary table with columns: LOAD CLASSIFICATION, CONNECTED, DEMAND, ESTIMATED, PANEL TOTALS. Includes values for HVAC and RECEPTACLES.

NOTES:

PANELBOARD: L1HB

LOCATION: MECH/ELEC - 273
VOLTAGE: 208Y/120 V, 3 ø 4 W.
MOUNTING: SURFACE NEMA 1
A.I.C. RATING: 10,000 AMPS SYMMETRICAL
MAIN DEVICE: 350.0 A MAIN CB
BUS AMPS: 350 AMPS
SPECIAL:
FED FROM: THB

Table with columns: LOAD NAME, NOTE, BKR, P, CKT, A, B, C, CKT, P, BKR, NOTE, LOAD NAME. Lists loads like P-MXS, ELEV P/T LIGHTS, RECEPTACLES, etc.

Summary table with columns: LOAD CLASSIFICATION, CONNECTED, DEMAND, ESTIMATED, PANEL TOTALS. Includes values for HVAC and RECEPTACLES.

NOTES:
\*G - INDICATED PROVIDE GFCI BREAKER.

PANELBOARD: LCH

LOCATION: FACS LAB - 220
VOLTAGE: 208Y/120 V, 3 ø 4 W.
MOUNTING: RECESSED NEMA 1
A.I.C. RATING: 10,000 AMPS SYMMETRICAL
MAIN DEVICE: 100.0 A MLO
BUS AMPS: 100 AMPS
SPECIAL:
FED FROM: LCA

Table with columns: LOAD NAME, NOTE, BKR, P, CKT, A, B, C, CKT, P, BKR, NOTE, LOAD NAME. Lists loads like SPARE, GAS COOKTOP, REFRIGERATOR, etc.

Summary table with columns: LOAD CLASSIFICATION, CONNECTED, DEMAND, ESTIMATED, PANEL TOTALS. Includes values for RECEPTACLES.

NOTES:
\*G - INDICATED PROVIDE GFCI BREAKER.

PANELBOARD: LM1

LOCATION: MECH. YARD
VOLTAGE: 208Y/120 V, 3 ø 4 W.
MOUNTING: SURFACE NEMA 3R
A.I.C. RATING: 10,000 AMPS SYMMETRICAL
MAIN DEVICE: 225.0 A MAIN CB
BUS AMPS: 225 AMPS
SPECIAL:
FED FROM: TM1

Table with columns: LOAD NAME, NOTE, BKR, P, CKT, A, B, C, CKT, P, BKR, NOTE, LOAD NAME. Lists loads like SPARE, HP-333, HP-273, etc.

Summary table with columns: LOAD CLASSIFICATION, CONNECTED, DEMAND, ESTIMATED, PANEL TOTALS. Includes values for HVAC.

NOTES:

PANELBOARD: L2A

LOCATION: CLOSET - 333
VOLTAGE: 208Y/120 V, 3 ø 4 W.
MOUNTING: SURFACE NEMA 1
A.I.C. RATING: 10,000 AMPS SYMMETRICAL
MAIN DEVICE: 200.0 A MLO
BUS AMPS: 200 AMPS
SPECIAL: PROVIDE FEED THRU LUGS
FED FROM: L1HA

Table with columns: LOAD NAME, NOTE, BKR, P, CKT, A, B, C, CKT, P, BKR, NOTE, LOAD NAME. Lists loads like RECEPTACLES, KILN, RECEPTACLES, etc.

Summary table with columns: LOAD CLASSIFICATION, CONNECTED, DEMAND, ESTIMATED, PANEL TOTALS. Includes values for RECEPTACLES and MTR.

NOTES:
\*G - INDICATED PROVIDE GFCI BREAKER.

PANELBOARD: HAG

LOCATION: CLOSET/HVAC - 230
VOLTAGE: 480Y/277 V, 3 ø 4 W.
MOUNTING: SURFACE NEMA 1
A.I.C. RATING: 14,000 AMPS SYMMETRICAL
MAIN DEVICE: 400.0 A MAIN CB
BUS AMPS: 400 AMPS
SPECIAL: SHUNT TRIP MAIN BREAKER
FED FROM: HHA

Table with columns: LOAD NAME, NOTE, BKR, P, CKT, A, B, C, CKT, P, BKR, NOTE, LOAD NAME. Lists loads like 480V WELDER, TRANSFORMER, TAGB, etc.

Summary table with columns: LOAD CLASSIFICATION, CONNECTED, DEMAND, ESTIMATED, PANEL TOTALS. Includes values for RECEPTACLES.

NOTES:

PANELBOARD: LM2

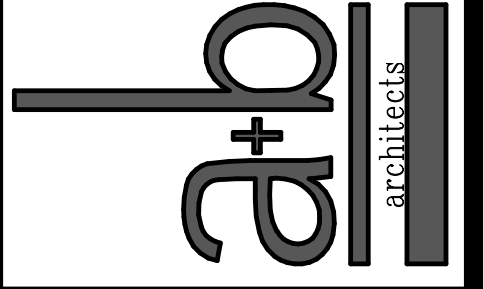
LOCATION: EXTERIOR
VOLTAGE: 208Y/120 V, 3 ø 4 W.
MOUNTING: SURFACE NEMA 3R
A.I.C. RATING: 10,000 AMPS SYMMETRICAL
MAIN DEVICE: 350.0 A MAIN CB
BUS AMPS: 350 AMPS
SPECIAL:
FED FROM: TM2

Table with columns: LOAD NAME, NOTE, BKR, P, CKT, A, B, C, CKT, P, BKR, NOTE, LOAD NAME. Lists loads like SPARE, HP-333, HP-273, etc.

Summary table with columns: LOAD CLASSIFICATION, CONNECTED, DEMAND, ESTIMATED, PANEL TOTALS. Includes values for HVAC.

NOTES:

Altman + Barrett



Altman + Barrett
a r c h i t e c t s
P.O. BOX 665 - 117 WEST MAIN ST.
HAHIRA, GEORGIA 31632
PHONE # (229) 585-9018

DATE: 10.16.24
DRAWN: B. HANLEY
CHECKED: J. FLEMING
REVISIONS: 1/10/25
www.altmanbarrettarchitects.com

HIGH SCHOOL ADDITION
TO ECHOLS K-8 SCHOOL
FOR ECHOLS COUNTY SCHOOLS
100 WILDCAT CIRCLE
STATENVILLE, GEORGIA 31648

CHECK SET
FACILITY CODE: 650-1050
IU'S 18 FTE 275

E6001

EDC
ELECTRICAL DESIGN
CONSULTANTS
ELECTRICAL ENGINEERS
AUGUSTA OFFICE - PROJECT #: 23136
edc1973.com

PROJECT NO: 23030

1/10/2025 2:03:07 PM