

# **Kansas School for the Deaf**

## **Course Selection Book**

**2022-2023**



## Table of Contents

Introduction.....	1
Middle School Course of Study.....	2
High School Course of Study.....	2
High School Classification Guidelines.....	2
High School Graduation Requirements.....	3
Community Service Hours .....	4
Curriculum & Assessment.....	5
Career Technical Education (CTE).....	5
Individual Plans of Study (IPS).....	5
Testing Information.....	6
English Language.....	7-9
World Language .....	10
Math.....	11-15
Science.....	16-17
Social Studies.....	18-19
Health & Physical Education.....	20-21
Driver Education.....	22
Communications.....	23
CTE Human Services.....	24
CTE Hospitality & Tourism.....	25
CTE Computer & Info Science.....	26
CTE Fine & Performing Arts.....	27-28
CTE Architecture & Construction.....	29
CTE Manufacturing.....	30
CTE Transportation, Distribution and Logistics.....	31
CTE Engineering & Technology.....	32-33
Career Education.....	34-36
Special Courses.....	37
Dual Placement.....	38
Olathe Advanced Tech Center (OATC).....	39
Transition Intro Post-Secondary (TIPS) JCCC.....	40
Kansas Career Fields & Clusters.....	41

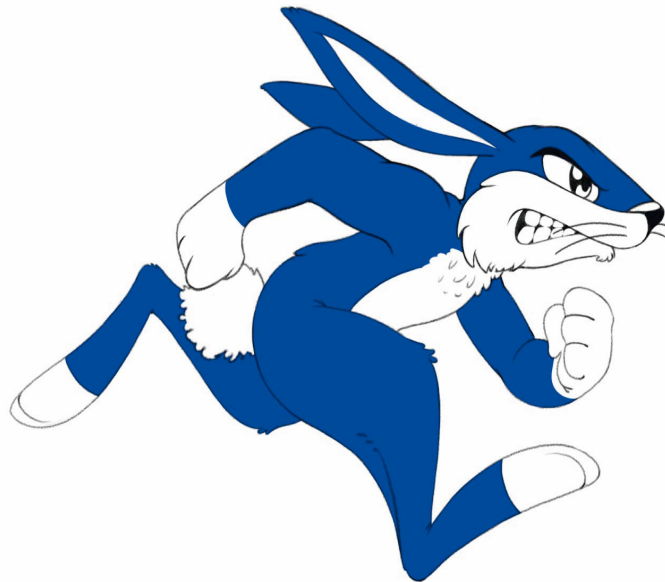
## Introduction

Welcome to the Kansas School for the Deaf Course Selection Book. This guide offers an inventory and description of the courses offered at KSD. Select courses are also offered through the Olathe Public School District. Selecting and planning courses for students is a very important process. Courses are selected to prepare students for their future educational achievements as well as future job placements.

The purpose of this Course Selection Book is to:

1. Provide current information on courses offered for the upcoming school year.
2. Provide the necessary information to develop an Individual Plan of Study.

Selection of classes will have a direct impact on a student's postsecondary plans. Parents are invited to select and discuss class options with your student. Please contact KSD high school with any questions.



## Middle School

Middle School includes grades 7 and 8. Middle School students take a prescribed course of study which includes English/Writing, Math, Science, Social Studies (US History, Kansas History, and World Geography), and Physical Education. In addition, all students receive a set of electives. Elective courses include: Career Explorations, Home Improvement, Introduction to Technology, Introduction to Driver's Education and Visual Arts. Students begin attending their IEP meetings in sixth grade. An Individual Plan of Study (IPS) is developed for each student.

## HIGH SCHOOL

Senior High School consists of grades 9 through 12. The focus of the high school program is on post-secondary planning such as preparation for employment, advanced education and/or training, volunteerism, and independent living skills. An Individual Plan of Study (IPS) is developed for each student.

Students receiving the Kansas Board of Education diplomas must complete the minimum graduation requirements of 25 credits. All high school students consult with the Transition Coordinator and Primary Provider each school year regarding selection of course offerings to meet the requirements for graduation as well as their post-secondary plans.

There are programs outside of KSD made available for those who wish to pursue a certain field or interest. High school students have an option of enrolling in classes at Olathe North (located five blocks north of KSD) or technical education courses offered at Olathe Advanced Technical Center (located five blocks north of KSD).

## HIGH SCHOOL CLASSIFICATION GUIDELINES

Placement in one of the upper three (3) levels of senior high school is based on the graduation requirements completed.

Sophomore 6 credits

Junior 12 credits

Senior 18 credits

For students going to college, it is highly recommended that they take a full academic load each year, including eight (8) credits in Language Arts, four (4) credits in Mathematics, and three (3) credits in Science. Students must complete a minimum of 25 credits. Students are informed regularly of completed graduation requirements..

# High School Graduation Requirements (KSD Minimum)

<b>English</b>		<b>6 Credits</b>
<b>Social Studies</b> Required: Government .5 credits US History 1 credit Modern World History 1 credit		<b>3 Credits</b>
<b>Science (1 Lab)</b>		<b>3 Credits</b>
<b>Mathematics</b>		<b>3 Credits</b>
<b>Physical Education/Health</b>		<b>1 Credit</b>
<b>Career Technical Education</b>		<b>4 Credits</b>
<b>Deaf Studies</b>		<b>.5 Credits</b>
<b>American Sign Language</b>		<b>.5 Credits</b>
<b>Fine Arts</b>		<b>1 Credit</b>
<b>Electives</b>		<b>3 Credits</b>
	<b>Total Credits</b>	<b>25 Credits</b>
<b>Community Service Hours</b>	Freshmen 6 hrs Sophomores 12 hrs Juniors 20 hrs Seniors 26 hrs	<b>64 total hours</b>

## Community Service Hours

Kansas School for the Deaf High School students are required to complete 64 hours of Community Service as part of their graduation requirements. Students are to earn at least the minimum number of required hours per year but are encouraged to earn more. Students are not to receive any type of compensation for their time or service. Students also have the opportunity to receive a President's Volunteer Service Award.

### Hours required per year

Freshmen- 6 Hours

Sophomores- 12 Hours

Juniors- 20 Hours

Seniors- 26 Hours

### **Where do I find Community Service Forms?**

Roberts Building 2nd floor Hallway

Transition Office #219

[www.ksdeaf.org](http://www.ksdeaf.org)

\*Secondary

\*Course Selection Book

\* Click on Community Service Form

### **President's Volunteer Service Award**

KSD students have the opportunity to earn The President's Volunteer Service Award. This award recognizes United States citizens and lawfully admitted permanent residents of the United States who have achieved the required number of hours of service over a 12 month period/lifetime. This award structure is designed to recognize individuals for their service throughout their volunteer journey.

## CURRICULUM AND ASSESSMENT

The Kansas State Board of Education adopted Kansas College and Career Ready standards for all students in the core areas of English Language Arts and mathematics; created social studies standards in 2013; and adopted the Next Generation Science Standards in 2013. KSD has taken those standards and implemented the development of curricula based on these standards.

KSD participates in state assessments required for all public schools in Kansas. Students with cognitive disabilities will test in ELA and math on the DLM (Developmental Learning Maps) alternate assessment. All other students will take the KCCRS general assessment in ELA, Math, Social Studies, and Science.

KSD participates in local assessments for students using the MAP (Measure of Academic Progress) assessment biannually.

## CAREER TECHNICAL EDUCATION (CTE)

The Career Technical Education program provides students the opportunity to focus on their future and enhances education by connecting the classroom learning to the world of work and to begin their post secondary planning. The students learn about their interests and become aware of their strengths and needs related to future employment. Heavy emphasis is placed on learning job etiquette, employer and employee responsibility and helpful tips for working successfully in the hearing world. Teachers in the CTE program offer information on job searches, senior portfolios, career planning, college searches, job coaching, interviewing skills, filling out applications, and scholarships. Students take interest inventories to pinpoint areas of interests and aptitudes. Seniors are required to complete their senior portfolio as one graduation requirement. Senior portfolios will be done during seminar under the guidance of CTE teachers. Their portfolios will consist of information they will need for their post secondary job search, training, or college, such as documentation of service learning projects, resume, apprenticeship, internship, work experience, job shadowing and other projects. Students will receive a hard copy and electronic copy of their Senior Portfolio. CTE teachers also provide support to local businesses for accommodations needed to work with KSD students.

## INDIVIDUAL PLANS OF STUDY (IPS)

The foundational elements of the Individual Plan of Study (IPS) are the career interests identified by the student through an authentic career interest survey or assessment. A roadmap based on the student's interests and talents can then be developed. Other parts of the IPS include graduation requirements, approved coursework for the student's educational and career goals, and developmentally-appropriate, work-based learning experiences.

<http://www.ksde.org/Agency/Division-of-Learning-Services/Career-Standards-and-Assessment-Services/CSAS-Home/Individual-Plans-of-Study-IPS-Student>

## **TESTING INFORMATION**

### **American College Testing (ACT)**

The ACT is an achievement-oriented test used by colleges for admissions purposes. The ACT is made up of four subtests: English, Mathematics, Reading, and Science reasoning. Students receive a score of 1-36 for each subtest and a composite score. In addition to being used for college admission purposes, the ACT is also required for admission to certain special programs such as nursing and dental hygiene.

Colleges in the Midwest generally prefer the ACT. College-bound students should take the ACT several times throughout their high school years. Several test dates are available each year for students who need or desire additional dates. Registration packets are available in the Transition Office Room #219.

Students have the opportunity to take the ACT test at Kansas School for the Deaf or Olathe North High School on preselected dates assigned by ACT.



# Course Offerings

## LANGUAGE ARTS

Course Title And Number	Credit	9	10	11	12	Prerequisite
English I 0900	.5	X				None
English I 0901	1	X				None
English II 1000	.5		X			English I
English II 1001	1		X			English I
English III 1100	.5			X		English II
English III 1101	1			X		English II
English IV 1200	.5				X	English III
English IV 1201	1				X	English III
KSTAR English 1303					KS	English IV
Creative Writing I 1102	1		X	X	X	English I
Creative Writing II 1203	1			X	X	English II
Applied English & Communication I 0954	.5	X	X	X	X	None
Applied English & Communication I 0955	1.0	X	X	X	X	None
Applied English & Communication II 0944	1.0	X	X	X	X	Applied Eng. & Comm. I

**English I: 0900 / Grade 9 / Credit: 1**

Students will enroll in a one hour reading course and a one hour writing course, both of which are offered at different levels in order to meet individual learning needs. Students will be working from the Common Core State Standards and will be working on the development of vocabulary, reading, writing, viewing, speaking, technology, research, and critical thinking skills. All reading courses will emphasize active reading skills and strategies to enhance the reading experience. Depending upon level, reading courses may emphasize reading functional texts, practicing Dolch and bridging instruction, obtaining heavy vocabulary instruction, reading for information, understanding literary elements, making applications to literature, experiencing various genres, and/or analyzing literature. Depending upon level, writing courses may emphasize vocabulary, social English, parts of speech, sentence writing, paragraph writing, essay writing, research skills, research papers, and/or comprehensive projects.

**English II: 1001/ Grade 10 / Credit: 1**

Students will enroll in a one hour reading course and a one hour writing course, both of which are offered at different levels in order to meet individual learning needs. Students will be working from the Common Core State Standards and will be working on the development of vocabulary, reading, writing, viewing, speaking, technology, research, and critical thinking skills. All reading courses will emphasize active reading skills and strategies to enhance the reading experience. Depending upon level, reading courses may emphasize reading functional texts, practicing Dolch and bridging instruction, obtaining heavy vocabulary instruction, reading for information, understanding literary elements, making applications to literature, experiencing various genres, and/or analyzing literature. Depending upon level, writing courses may emphasize vocabulary, social English, parts of speech, sentence writing, paragraph writing, essay writing, research skills, research papers, and/or comprehensive projects.

**English III: 1101/ Grade 11 / Credit 1**

Students will enroll in a one hour reading course and a one hour writing course, both of which are offered at different levels in order to meet individual learning needs. Students will be working from the Common Core State Standards and will be working on the development of vocabulary, reading, writing, viewing, speaking, technology, research, and critical thinking skills. All reading courses will emphasize active reading skills and strategies to enhance the reading experience. Depending upon level, reading courses may emphasize reading functional texts, practicing Dolch and bridging instruction, obtaining heavy vocabulary instruction, reading for information, understanding literary elements, making applications to literature, experiencing various genres, and/or analyzing literature. Depending upon level, writing courses may emphasize vocabulary, social English, parts of speech, sentence writing, paragraph writing, essay writing, research skills, research papers, and/or comprehensive projects.

**English IV: 1201/ Grade 12 / Credit 1**

Students will enroll in a one hour reading course and a one hour writing course, both of which are offered at different levels in order to meet individual learning needs. Students will be working from the Common Core State Standards and will be working on the development of vocabulary, reading, writing, viewing, speaking, technology, research, and critical thinking skills. All reading courses will emphasize active reading skills and strategies to enhance the reading experience. Depending upon level, reading courses may emphasize reading functional texts, practicing Dolch and bridging instruction, obtaining heavy vocabulary instruction, reading for information, understanding literary elements, making applications to literature, experiencing various genres, and/or analyzing literature. Depending upon level, writing courses may emphasize vocabulary, social English, parts of speech, sentence writing, paragraph writing, essay writing, research skills, research papers, and/or comprehensive projects.

**English I: 0901/ Grade 9 / Credit: .5****English II: 1000/ Grade 10 / Credit: .5****English III: 1100/ Grade 11 / Credit .5****English IV: 1200/ Grade 12 / Credit .5**

**KSTAR English: 1301****Grade: KSTAR / NA**

KSTAR English students continue to develop and refine skills for writing, thinking, and reading. The class reads and writes about a variety of literary works. Various literary elements are explored and reviewed. Writing classes emphasize review of basic skills with a focus on writing for future needs; i.e. college or work. (Two class periods are scheduled.) Prerequisite: Complete graduation requirements and continue in the program as a KSTAR student.

**Creative Writing I: 1102****Grades: 10-11-12 / Credit 1**

**Prerequisites: C or better in English and love of writing.** Students will explore many different genres in English literature including novels, short stories, fairy tales, fables, articles, comics, poetry, and song lyrics. Students then will produce their own literature for all of these genres, publish, perform, and submit their work for contests, literary publications, and for a personal portfolio. Students will produce writing daily through free writing as well as teach particular lessons.

**Creative Writing II: 1203****Grades: 11-12 / Credit 1**

**Prerequisites: C or better in English and love of writing.** Creative Writing II students will explore many different genres in English literature including novels, short stories, fairy tales, fables, articles, comics, poetry, and song lyrics. Students then will produce their own literature for all of these genres, publish, perform, and submit their work for contests, literary publications, and for a personal portfolio. Students will produce writing daily through free writing as well as teach particular lessons.

**Applied English & Communication: 0954 / 0955/0944****Grades: 9-12 / Credits.5 or 1**

The purpose of this course is to enable students develop and apply good communication skills. An emphasis is placed on signed and written communication. This is designed on the premise that the development of effective communication requires an understanding of how language works in a variety of communicative contexts. It provides opportunities for the acquisition and application of communicative skills through active engagement with a range of texts. It is also designed to instruct students with programs on the computer such as Adobe PhotoShop, Illustrator, InDesign, and iMovie or Final Cut Pro in preparation of layout, design, and communication principles for publication. Students will design and do layouts for academic programs/events, sport programs, special events, trivia facts, interviews, and etc., using photographs and digital imaging, scanner, videos, cameras, and appropriate software tools. Students will learn the four phases of journalism writing in a multimedia aspect: text features and structures such as headlines, leads, body, and revisions, purposes of writing for kinds of audiences, codes of ethics and standards of professional conduct, and will have opportunities to develop, write, and input news stories.

# World Language

Course Title & Number	Credit	9	10	11	12	Prerequisite
Secondary ASL Immersion I 0703	1	X	X	X	X	Bilingual Team Recommendation
Secondary ASL Immersion II 0706, 0707	.25 .5	X	X	X	X	Secondary ASL Immersion I
KSTAR ASL Immersion I 1305					KS	
ASL for Heritage Signers (ASL) 1002	.5	X	X	X	X	Required for graduation. Taken with Deaf Studies
KSTAR ASL for Heritage Signers (ASL) 1304					KS	

## Secondary ASL Immersion I: 0703

**Grade 9-12/ Credit: 1**

This course is for students demonstrating delays in American Sign Language usage – either receptively or expressively. The primary goal of ASL instruction is authentic language use which is conversational, pragmatic, and academic with the use of social American Sign Language (ASL) as the goal for this class. A wide variety of student-centered approaches are used. Extra –curricular events and field trips are used to widen experiences which are built upon for conversation starters. Video projects demonstrate progress. Videotaping is part of the formative assessment to determine the progress students make toward their ASL goals. At the end of each quarter, the Bilingual Specialist and classroom teacher will use a variety of assessments to determine progress. The Martha French Proficiency Level assessment is a summative assessment used to determine student readiness for class exit. **Inclusion in this class is based on assessment by the KSD Bilingual Specialist and by teacher recommendation.**

## Secondary ASL Immersion II: 0706, 0707

**Grade 9-12/ Credit: 1**

This course is a continuation of ASL Immersion 1. It is for 7-8th grade students or 9-12th grade students who continue to demonstrate severe ASL delays (often giving the appearance of a language disorder), student who have migrated to America from another country with minimal language skills, or students whose educational (e.g., mainstreamed, deaf program, oral school) and/or language (i.e., hard-of-hearing/CI students who have been oral and know no or little sign language) backgrounds have left them with severe ASL and English delays. The primary goal is to continue to develop authentic language use which is conversational, pragmatic, and academic. This course will primarily be taught through social studies and science content areas. Students will be re-evaluated every 9 weeks regarding continued placement and services.

## American Sign Language for Heritage Signers (ASL): 1002 Grade 12 / Credit: .5 / Required

**This is a required class.** This course will cover the grammar and use of American Sign Language (ASL). All students will improve their fluency and understanding of the language.

# Mathematics

Course Title and Number	Credit	9	10	11	12	Prerequisite
General Math I 0910	1	X				Math 8 and Placement
General Math II 1010	1		X			General Math I
General Math III 1110	1			X		General Math II
General Math IV 1210	1				X	Math 8 and Placement
Pre-Algebra 0911	1	X				Placement
Algebra I 1012	1	X	X	X	X	Pre-Algebra and Placement
Algebra 1 a 0914	1	X	X	X		Pre-Algebra and Placement
Algebra 1 b 0915	1	X	X	X		Pre-Algebra and Placement
Geometry 1111	1	X	X	X	X	Algebra I
Algebra II 1112	1	X	X	X	X	Algebra 1
College Algebra 1209	1		X	X	X	Algebra II
Pre-Calculus 1015	1			X	X	Algebra II or College Algebra
Calculus 1 1016	1			X	X	Pre-Calculus
Personal Finance 1215	1				X	Placement
KSTAR Personal Finance 1315					KS	

## General Math I: 0910

Grades: 9/Credit: 1

**Prerequisite:** Successful completion of 8th grade math and placement. The purpose of this course is to extend the high school curriculum to address higher levels of all strands of the Kansas College and Career Ready Standards across the K-12 curriculum. This course is designed for students who need to improve basic math skills and concepts: addition, subtraction, multiplication, division, time, measurement, money, area, perimeter, fractions, arithmetic algorithms, geometry and measurement, negative numbers, powers and roots, two-step word problems, prime and composite numbers, ratios, order of operations, decimals, averaging, estimation, patterns and sequences, statistics and probability, and Roman numerals.

**General Math II: 1010****Grades: 10/ Credit: 1**

***Prerequisite: Successful completion of General Math I and placement. The purpose of this course is to extend the high school curriculum to address higher levels of all strands of the Kansas College and Career Ready Standards across the K-12 curriculum.*** . This course is designed for students who need to improve basic math skills and concepts: fractions, mixed numbers, decimals, percents, ratios, rounding, estimating, exponents, working with signed numbers, square roots, beginning algebraic expressions, surface area, volume, angles, circles, prime factorization, ratios and proportions, statistics and probability, word problems, scientific notation, statistics and probability, ratios and proportions, simplifying and balancing equations, factoring algebraic expressions, slope-intercept form, graphing linear inequalities, arcs and sectors and the Pythagorean theorem.

**General Math III: 1110****Grades: 11/ Credit: 1**

***Prerequisite: Successful completion of General Math II and placement. The purpose of this course is to extend the high school curriculum to address higher levels of all strands of the Kansas College and Career Ready Standards across the K-12 curriculum.*** General Math III reviews the math procedures that students will need outside the classroom. Students will study a different math procedure (whole numbers, fractions, decimals and percents and data) each quarter and apply them to various life skills, such as renting an apartment, buying a car, and calculating wages. A basic-function calculator is required.

**General Math IV: 1210****Grades: 12 / Credit: 1**

***Prerequisite: Successful completion of General Math III and placement. The purpose of this course is to extend the high school curriculum to address higher levels of all strands of the Kansas College and Career Ready Standards across the K-12 curriculum.*** General Math IV class will take a more in-depth look at the topics seniors will face living on their own. The focus will be on the mathematical procedures involved in these day-to-day tasks, such as banking and investing, paying taxes, and budgeting personal expenses. A basic-function calculator is required.

***Pre-Algebra: 0911******Grades: 8-9/ Credit: 1***

***Successful completion of Course II and placement. The purpose of this course is to extend the high school curriculum to address higher levels of all strands of the Kansas College and Career Ready Standards across the K-12 curriculum.*** This course reviews the basic skills needed for Algebra and introduces the concepts of variables, equations, formulas, integers, exponential notation, and graphing. A basic function calculator is required.

***Algebra 1a: 0914******Grades: 9-10-11/ Credit: 1***

***Successful completion of Pre-Algebra and placement. The purpose of this course is to extend the high school curriculum to address higher levels of all strands of the Kansas College and Career Ready Standards across the K-12 curriculum.*** The course will prepare students for Geometry. Algebra 1a/1b content is presented at a slower pace and includes, but is not limited to, linear functions, equations, and inequalities; simplifying polynomials, rational expressions, and radical expressions; and we will begin to study quadratic relationships and discrete mathematics. Mathematical skills are applied to real world problems to make meaningful connections to life experiences.

***Algebra 1b: 0915******Grades: 9-10-11/ Credit: 1***

***Successful completion of Pre-Algebra and placement. The purpose of this course is to extend the high school curriculum to address higher levels of all strands of the Kansas College and Career Ready Standards across the K-12 curriculum.*** The course will prepare students for Geometry. Algebra 1a/1b content is presented at a slower pace and includes, but is not limited to, linear functions, equations, and inequalities; simplifying polynomials, rational expressions, and radical expressions; and we will begin to study quadratic relationships and discrete mathematics. Mathematical skills are applied to real world problems to make meaningful connections to life experiences.

**Algebra I: 1012****Grades: 9-10-11-12 / Credit: 1**

**Prerequisite:** *Successful completion of Pre-Algebra.* The purpose of this course is to extend the high school curriculum to address higher levels of all strands of the Kansas College and Career Ready Standards across the K-12 curriculum. The course will prepare students for Geometry and Algebra II. The content includes, but is not limited to, linear functions, equations, and inequalities; simplifying polynomials, rational expressions, and radical expressions; and we will begin to study quadratic relationships and discrete mathematics. Mathematical skills are applied to real world problems to make meaningful connections to life experiences. Students will need access to a scientific calculator on a regular basis. **Please note: Students recommended for enrollment in this course must meet the district criteria: 1) district and state assessment results, 2) algebra readiness performance, and 3) current course performance.**

**Geometry: 1111****Grades: 10-11-12 / Credit: 1**

**Prerequisite:** *Prerequisite: Successful completion of Algebra I.* The purpose of this course is to extend the high school curriculum to address higher levels of all strands of the Kansas College and Career Ready Standards across the K-12 curriculum. The course will prepare students for Algebra II, College Algebra, and Pre-Calculus. The content includes, but is not limited to, Euclidean, transformational, and coordinate geometry, Pythagorean Theorem and distance formula, properties of polygons, circles, and 3-dimensional figures, perimeter, area, volume, similar and congruent figures for solving and using in proofs, constructions, several approaches to proofs, development of mathematical reasoning and applications in conditional probability. Mathematical skills are applied to real world problems to make meaningful connections to life experiences. Students will need access to a scientific calculator on a regular basis. **Guided Enrollment Note: Geometry covers topics in greater depth than in Applied Geometry and is the recommended pre-college core mathematics curriculum.**

**Algebra II: 1112****Grades: 9-10-11-12 / Credit: 1**

**Prerequisites:** *Successful completion of Algebra I or Geometry.* The purpose of this course is to extend the high school curriculum to address higher levels of all strands of the Kansas College and Career Ready Standards across the K-12 curriculum. The course will prepare students for College Algebra, and Pre-Calculus.. The content includes, but is not limited to, polynomial, rational, and radical relationships, trigonometric functions, linear, quadratic, exponential, and logarithmic functions, modeling with functions, and inferences and conclusions from data. Mathematical skills are applied to real world problems to make meaningful connections to life experiences. The student will need access to a graphing calculator on a regular basis. A TI-84 series graphing calculator is strongly recommended.

**College Algebra: 1209****Grades: 10-12 / Credit: 1**

**Prerequisites:** *Prerequisite: Successful completion of Algebra II.* The purpose of this course is to extend the high school curriculum to address higher levels of all strands of the Kansas College and Career Ready Standards across the K-12 curriculum. The course will prepare students for Pre-Calculus. The content includes, but is not limited to, quadratic equations and inequalities using irrational and complex numbers, analytical geometry, application of sequence and series, matrix algebra, probability and statistics, and trigonometry. Mathematical skills are applied to real world problems to make meaningful connections to life experiences. The student will need access to a graphing calculator on a regular basis. A TI-84 series graphing calculator is strongly recommended.

**Pre-Calculus: 1015****Grades: 10-12/ Credit: 1**

**Pre-Calculus- Prerequisite:** *Successful completion of College Algebra.* The purpose of this course is to extend the high school curriculum to address higher levels of all strands of the Kansas College and Career Ready Standards across the K-12 curriculum. The course will prepare students for Pre-Calculus. The content includes, but is not limited to, algebraic and graphical analysis with transformations, the study of continuity, rational, logarithmic and exponential functions, trigonometric and circular functions, conics, sequences and series, limits, parametrics, and vectors.. Mathematical skills are applied to real world problems to make meaningful connections to life experiences. The student will need access to a graphing calculator on a regular basis. A TI-84 series graphing calculator is strongly recommended.

**Calculus I: 1016****Grades: 11-12/Credit: 1**

**Prerequisite:** *Successful completion of Pre-Calculus.* Instruction emphasizes functions, graphs, and limits, derivatives and their applications, properties of definite integrals and application of integrals, Fundamental Theorem of Calculus, and techniques and applications of anti-differentiation. The student will need access to a graphing calculator on a regular basis. A TI-84 series graphing calculator is strongly recommended.

**Personal Finance: 1215****Grade: 12/Credit: 1**

**Placement/ Teacher's Recommendation.** Personal Finance is a year course designed to help students understand the impact of individual choices on occupational goals and future earnings potential. Real world topics covered will include income, money management, spending and credit, as well as saving and investing. Students will design personal and household budgets; simulate use of checking and saving accounts; demonstrate knowledge of finance, debt, and credit management; and evaluate and understand insurance and taxes. This course will provide a foundational understanding for making informed personal financial decisions.



# Science

Course Title And Number	Credit	9	10	11	12	Prerequisite
Biology 1020	1	X	X			Required Course
Physical Science 0920	1	X	X			Required Course
Earth/Space Systems 1120	1			X		Required Course
Environmental Science 1021	.5		X	X	X	None
Horticultural Science 1121	.5		X	X	X	None
Chemistry 1221 Offered at Olathe North	1			X	X	Biology  Algebra II (may be taken concurrently with Chemis- try)
Physics 1222 Offered at Olathe North	1			X	X	Algebra II

## **Biology: 1020**

**Grade: 9 / Credit: 1 / Required**

**This is a required course for all freshmen.** Biology is a lab-oriented course where problem-solving skills are practiced. The emphasis of the course is on fundamental biology topics and molecular topics such as biochemistry, genetics, cellular processes, diversity of plants, animals, fungi, protists, and monerans. Environmental and ecological aspects are covered throughout the curriculum.

## **Physical Science: 0920**

**Grade: 10 / Credit: .5 / Required**

**This is a required course for all sophomores.** Physical Science is a course in which students develop problem solving skills and strategies while performing laboratory and field investigations of fundamental chemical, physical, and related earth and space science concepts and principles that are related to students' interests and that address everyday problems. Students enrolled in Physical Science will explore the structure and properties of matter, the nature of energy and its roles in chemical reactions and the physical and chemical laws that govern Earth's interconnected systems and forces of nature.

**Earth/Space Systems: 1120****Grade: 11 / Credit: 1 / Required**

**This is a required course for all juniors.** These courses emphasize the laboratory application and field study of biological, chemical, and physical principles to the study of selected topics in astronomy, meteorology, geology, oceanography, and associated sciences. Attention is given to the impact of human activity on earth.

**Environmental Science: 1021****Grades: 10-11-12 / Credit: .5 /**

Environmental Science is an elective interdisciplinary science course that integrates biology, earth science, chemistry, and other disciplines. Students enrolled in this course conduct in-depth scientific studies of ecosystems, population dynamics, resource management, and environmental consequences of natural or human processes. Students formulate, design, and carry out laboratory and field investigations as an essential course component.

**Horticultural: 1121****Grades: 10-11-12 / Credit: .5 /**

Horticultural is an elective science course designed for those students interested in mastering fundamental techniques in the care of plant life in the home, business, and community environments. Topics in Horticultural include: careers in horticulture, plant anatomy and physiology, growth conditions, plant propagation, control of disease, weeds, and pests; greenhouse management, plant identification, soils and their preparation, lawns, and landscaping.

**Physics: 1222 (offered at Olathe North)****Grades: 11-12 / Credit: 1**

**Prerequisite: Completion of Biology, Algebra II.** Physics offers a hands-on approach to understanding how motion, heat, matter, light, and atoms relate to everyday life. It is recommended for students who plan to attend college.

**Chemistry: 1221 (offered at Olathe North)****Grades: 11-12 / Credit: 1**

**Prerequisite: completion of Biology and Algebra II** Chemistry is a science where facts are gathered and arranged in meaningful patterns revealing regularities that lead to the understanding of matter. Experiments are used to introduce principles to support class discussion, and to help in problem solving. Connections to environmental issues and everyday life situations will be emphasized. Organic and inorganic chemistry will be introduced. Writing in the Scientific Method will be emphasized. This course is recommended for those students planning to go to college.

# Social Studies

Course Title And Number	Credit	9	10	11	12	Prerequisite
Modern World History 0930	1	X				Required Course
U.S. History 1130	1		X			Required Course
U.S. Government 1230	.5			X	X	Required Course
World Geography 1232	.5			X	X	None
Deaf Studies 1031	.5			X	X	Required Course
KSTAR Deaf Studies 1333					KS	
Personal Finance 1215	1				X	Placement
Sociology Offered at Olathe North	.5	X	X	X	X	
Psychology Offered at Olathe North	.5	X	X	X	X	

## Modern World History: 0930

**Grade: 9 / Credit: .5 / Required**

**This is a required course for all freshmen.** Students will identify and analyze major 20th century historical events and their impact on the present. Current events and current issues will be part of this course. The student is exposed to the history of the World from 1400 to the present. Using a working knowledge and understanding of significant individuals, groups, ideas, events, eras and developments, the student will utilize essential analytical and research skills to demonstrate both knowledge and application skills.

## U.S. History: 1130

**Grade: 10 / Credit: .5 / Required**

**This is a required course for sophomores.** The student is exposed to the history of America from 1890 to the present. Using a working knowledge and understanding of significant individuals, groups, ideas, events, eras and developments, the student will utilize essential analytical and research skills to demonstrate both knowledge and application skills.

**U.S. Government: 1230****Grade: 11-12 / Credit: .5 / Required**

**This is a required course for juniors.** It is assumed that all Americans should know and understand the nature of the American system of government, its principles, and ideals. This course treats the origins, development, organizations, power, and actual working of American government and emphasized the change and developments in recent years at the local, state, and national levels. A project is required.

**World Geography: 1232****Grade: 11-12 / Credit: .5**

World Geography is a high school class that instructs students on issues related to geography and following Kansas State Standards. Key topics include the use of maps, graphic representations, tools, and technologies to locate, use, and present information about people, places, and environments; understanding the Earth's physical systems and how physical processes shape Earth's surface; how economic, political, cultural, and social processes interact to shape patterns of human populations, interdependence, cooperation, and conflict; and the effects of interactions between human and physical systems.

**Deaf Studies: 1031****Grade: 11-12 / Credit: .5 / Required**

**This is a required course.** This course covers six units, which include Identity, American Deaf Culture, American Sign Language (ASL), strategies for effective communication, cultural conflict and resolution, education of Deaf children today and protecting Deaf rights. Students will also give formal presentations. Students develop respect for other cultures. There will be opportunities to listen to presentations by Deaf leaders.

**Personal Finance: 1215****Grade: 12/Credit: 1**

**Placement/ Teacher's Recommendation.** Personal Finance is a year course designed to help students understand the impact of individual choices on occupational goals and future earnings potential. Real world topics covered will include income, money management, spending and credit, as well as saving and investing. Students will design personal and household budgets; simulate use of checking and saving accounts; demonstrate knowledge of finance, debt, and credit management; and evaluate and understand insurance and taxes. This course will provide a foundational understanding for making informed personal financial decisions.

# Health and Physical Education

Course Title And Number	Credit	9	10	11	12	Prerequisite
Physical Education/Health 0961	1	X				Required Course for Freshmen
Physical Education 0960	.75					*Transfer students
Health 0962	.25					*Transfer students
Introduction to Strength & Conditioning 0966	.5	X				None
Strength & Conditioning I 1062	.5		X	X	X	None
Strength & Conditioning II 1063	.5			X	X	Strength & Conditioning I
KSTAR Physical Education 1360	NA				KS	
Advanced Physical Education I 1066	.5		X	X	X	Physical Education 0961
Advanced Physical Education II 1067	.5		X	X	X	Advanced Physical Education I
Adapted Physical Education I 0765	.5	X	X	X	X	None
Adapted Physical Education II 0766	.5	X	X	X	X	Adapted Physical Education I

## Physical Education/Health: 0961

Grade: 9 / Credit: 1 / Required

**Physical Education is a required course for all freshmen.** This course is designed to instruct students in basic fundamental skills, knowledge and rules of a variety of team and individual physical fitness skills. Health is a one-quarter of this class. In the Health portion of this class, instruction focuses on specific health issues in the areas of drug/alcohol prevention, nutrition, mental health, and sex education, as well as current health topics in personal development, community resources and environmental health.

## Physical Education: 0960

Grade: 9 / Credit: .75 / Required

**\*Class for transfer students that missed PE.** This course is designed to instruct students in basic fundamental skills, knowledge and rules of a variety of team and individual physical fitness skills.

## Health: 0962

Grade: 9 / Credit: .25 / Required

**\*Class for transfer students that missed Health.** Health is a one-quarter class as part of the physical education class. In Health class, instruction focuses on specific health issues in the areas of drug/alcohol prevention, nutrition, mental health, and sex education, as well as current health topics in personal development, community resources, and environmental health.

## Introduction to Strength & Conditioning: 0966

Grades: 9 Credit: 0.5

**This is an introductory course for Freshman class.** The students will learn about the fundamentals for the bigger faster stronger (BFS) program. Understanding how to execute each exercise appropriately, learning about weight room safety and developing a positive mindset. The BFS program improves all aspects of athletic performance, including strength, power, speed, agility, and flexibility.

**Strength & Conditioning I: 1062****Grades: 10-12      Credit: .5**

This is an introductory course. The students will learn about personal safety and will use machine and free weight equipment training. The Bigger Faster Stronger (BFS) Tool Program, a total conditioning program for all students, will be used. The BFS program improves all aspects of athletic performance, including strength, power, speed, agility, and flexibility.

**Strength & Conditioning II: 1063****Grades: 11/12      Credit: .5**

This is an advanced course that provides the instruction of strength concepts with an emphasis on weight training. A passing grade in Strength and Conditioning I is required for enrollment.

**KSTAR Physical Education: 1360****Grades: KSTAR      Credit: NA**

This course provides students with knowledge, experience, and an opportunity to develop skills in more than one of the following sports or activities: team sports, individual/dual sports, recreational sports, and fitness/conditioning activities.

**Advanced Physical Education I 1066****Grade: 10/11/12/KSTAR      Credit: 0.5**

Students will acquire knowledge and skills in recreational, athletic and lifetime activities. The emphasis is on active participation, leadership, sportsmanship, teamwork, developing organization skills and supporting reading and writing across the curriculum. The students will be doing a couple projects that will promote leadership - for example, running an after school activity for the younger/dorm students, assisting the PE teacher with field day, etc. **This semester will focus on the following:** Recreational, athletic and lifetime activities, Sport rules/stats (understanding the game), Anatomy/Physiology, CPR and First Aid, Health/Wellness, Projects.

**Advanced Physical Education II 1067****Grade: 10/11/12/KSTAR      Credit: 0.5****Stu-**

Students will build on the skills from course I to acquire additional knowledge and skills in recreational, athletic and lifetime activities. The emphasis is on active participation, leadership, sportsmanship, teamwork, developing organization skills and supporting reading and writing across the curriculum. The students will be doing a couple projects that will promote leadership - for example, running an after school activity for the younger/dorm students, assisting the PE teacher with field day, etc. **The focus will be on the following:** Recreational, athletic and lifetime activities; Sport rules/stats (officiating); Nutrition/Healthy Living; Leadership/Coaching (coaching youth sports or hosting after school activities); Projects.

**Adapted Physical Education I 0765****Grade: 10/11/12/KSTAR      Credit: 0.5**

Adapted Physical Education is instruction for students who are unable to participate in the regular physical education program. This includes individual instruction in movement concepts and motor skill development, depending on the student's needs and capabilities. Also, encourage students to develop leisure skills for after they graduate. **The focus will be on the following:** Social and Emotional development (social skills); Personal Hygiene; Promoting healthy lifestyle choices; Establishing a workout/active routine on daily basis; Finding their personal interests (team/individual sports); Strength/flexibility training (strengthen their core muscles and improve their range of motion to avoid injuries).

**Adapted Physical Education II 0766****Grade: 10/11/12/KSTAR      Credit: 0.5**

Adaptive Physical Education students will continue this course. This includes individual instruction in movement concepts and motor skill development, depending on the student's needs and capabilities. Also, encourage students to develop leisure skills for after they graduate. **The focus will be on the following:** Social and Emotional development (social skills); Personal Hygiene; Promoting healthy lifestyle; Establishing a workout/active routine on daily basis; Participating in the community (for example, go to OCC to workout); Leisure skills (swimming - spring); Strength/flexibility training.

# Driver Education

Course Title And Number	Credit	9	10	11	12	Prerequisite
Driver Education 1051	.5		X	X	X	Instructional Permit before student enrolls in course and Teacher Recommendation
Driver Education 1049	1		X	X	X	Instructional Permit before student enrolls in course and Teacher Recommendation
KSTAR Driver Education 1304					KS	Instructional Permit before student enrolls in course
Transportation/Basic Driver Safety B1050	.5		X	X	X	

## **Driver Education: 1051**

**Grades: 10-11-12 / Credit: .5**

This course is designed to help novice drivers develop the knowledge, skills, and attitude necessary to become safe, responsible drivers. Students will receive a minimum of 30 hours of classroom instruction and 8 hours of driving and 4 hours of observation experience. The emphasis is on defensive driving and the social responsibilities of driving. Students must reside in the state of Kansas and be at least fourteen (14) years old. **Students may obtain an Instructional Permit (IP) before they enroll.**

## **Driver Education: 1049**

**Grades: 10-11-12 / Credit: 1**

This course is designed to help novice drivers develop the knowledge, skills, and attitude necessary to become safe, responsible drivers. Students will receive a minimum of 60 hours of classroom instruction and 16 hours of driving and 8 hours of observation experience. The emphasis is on defensive driving and the social responsibilities of driving. Students must reside in the state of Kansas and be at least fourteen (14) years old. **Students may obtain an Instructional Permit (IP) before they enroll.**

## **Transportation/Basic Driver Safety B1050**

**Grades: 10-11-12/Credit: .5**

This course provides transportation information about the school/student's local community and provides them the opportunity to become aware of their individual situations and level of independence. The content will focus on traffic rules and safety, knowledge and use of various means of transportation, and finding their way around the community using maps and basic community resources.

# Communications

Course Title And Number	Credit	9	10	11	12	Prerequisite
Yearbook I 1202	1		X	X	X	Digital Photography
Yearbook II 1205	1			X	X	Yearbook I

## Yearbook I: 1202

**Grades: 10-11-12 / Credit: 1**

**Prerequisites:** Students with previous experience in any of the following courses will be first to be considered: English (composition), Photography, Computer-related courses. Students will receive instruction in and will practice the various types of copy writing, editing, graphic design, layout, headline writing, and other journalistic skills. These skills will be evidenced in the school yearbook. Students will conduct the business of the yearbook, such as advertising sales, billing, and distribution. Students will also explore the role and uses of a variety of digital media. Guided Enrollment Note: This course may be repeated by permission of the instructor.

## Yearbook II: 1205

**Grades: 11-12 / Credit: 1**

**Prerequisite: Yearbook I**

This course provides students who have a strong interest in the journalistic skills. Areas of interest include teamwork, decision making process, goal setting, leadership, business etiquette, conflict resolution, and communication. Students will also explore the role and uses of a variety of digital media. Guided Enrollment Note: This course may be repeated by permission of the instructor.



# Career & Technical Education

## Human Services

Course Title And Number	Credit	9	10	11	12	Prerequisite
Childcare I 1070 Offered at Olathe North	.5	X	X	X	X	None
Childcare II 1270 Offered at Olathe North	.5	X	X	X	X	Childcare I
Interpersonal & Family Relations Offered at Olathe North	1			X	X	

### **Childcare I: 1070**

**Grades: 9-10-11-12 / Credit: .5**

This course focuses on child care and child development. The goal is to help students develop effective skills for parenting decisions, growth and development of children, and health and safety.

### **Childcare II: 1270**

**Grades: 9-10-11-12 / Credit: .5**

Childcare II will continue building concepts and skills taught in Childcare I. The focus will be on incorporating the concepts in developing curriculum materials and activities for child care careers and these types of skills applied in parenting skills.

# Career & Technical Education

## Hospitality & Tourism

Course Title And Number	Credit	9	10	11	12	Prerequisite
Culinary Essentials 1057 Offered at Olathe North	1	X	X	X	X	
Nutrition & Wellness 1078 Offered at Olathe North	1			X	X	

### **Culinary Essentials: 1057**

**Grades: 9-12 / Credit: 1**

This course will prepare students for careers or programs related to Culinary Arts industry. Students will develop skills in safety and sanitation and basic techniques in food preparation.

### **Nutrition & Wellness: 1078**

**Grades: 11-12 / Credit: 1**

This course will teach the nutrition and wellness practices that enhance family and individual needs and well-being. Topics included will be food preparation for nutrition, types of diets, and nutrition information.

# Computer & Information Science

## Information Technology

Course Title and Number	Credits	9	10	11	12	Prerequisites
Computer Application I 0990	.5	X	X	X	X	None
Offered at Olathe North						

### Computer Application I : 0990

**Grade: 9-12/Credit: .5**

This course is designed to introduce students to operating systems, word processing, database, spreadsheets, presentation software, and other computer technology. MS Office software will be used. The emphasis is on the concepts of computing, and using computers to solve problems. **Advanced computer classes are offered through the Olathe school district.**

# Career & Technical Education

## Fine and Performing Arts

Course Title And Number	Credit	9	10	11	12	Prerequisite
Studio Art 0950	.5	X	X	X	X	None
Basic Digital Photography 1145	.5	X	X	X	X	None
Digital Design (Former Graphic Design) 1093	.5	X	X	X	X	None
Digital Film (Former Multimedia) 1190	.5		X	X	X	Digital Design
Ceramics 0951	.5	X	X	X	X	None
Theater Arts I 1241	1	X	X	X	X	None
Theater Arts II 1242	1		X	X	X	Theater Arts I
Applied English & Communication I 0954	.5	X	X	X	X	None (English credit)
Applied English & Communication I 0955	1.0	X	X	X	X	None (English credit)
Applied English & Communication II 0944	1.0	X	X	X	X	Applied Eng. & Comm. I (English credit)

### Studio Art: 0950

**Grades: 9-12 / Credit: .5**

Studio Art is an introductory level course for students to learn the visual arts, who are considering an art major, or who wish to meet the Art credit for graduation. This course introduces students to basic art skills and techniques through a variety of different mediums (design, drawing, 3D construction, painting, sculpture, ceramics, fiber arts, jewelry making, printmaking and computer graphics) while covering the elements of art, principles of design, art history, and art critique.

### Basic Digital Photography: 1145

**Grades: 10-11-12 / Credit: .5**

This is an introduction to the concepts, tools and technology of digital imaging for photographers. Students will learn digital technology, including digital cameras and imaging software, and will use their knowledge to produce, create, and/or manipulate images for commercial and/or artistic applications. Students will also experience traditional photographic techniques and vocabulary. Students may provide their own digital camera, and should bring it to class. In some situations, camera checkout may be offered. Most work will be done with digital cameras and equipment.

### Digital Design (Former Graphic Design): 1093

**Grades: 9-10-11-12/ Credit: .5**

Combine art and design skills with the latest in graphic software to create new and fantastic imagery. This course will teach students how the basic elements and principles of art and design work

along with the latest in digital media software like the Photoshop, Illustrator, and Flash are the artist's tools for the 21st century.

**Digital Film: 1190**

**Grades: 9-10-11-12/ Credit: .5**

**Prerequisite: Digital Design** Students enrolled in Digital Film will produce short video productions for multiple modes of distribution. This is a fast paced class where students will acquire the skills they need to develop TV video and Web content, writing scripts, directing and acting in video projects, shooting stories, editing, and special effects. Focus areas may be music video, Radio broadcast, Episodic TV, stand-alone film shorts, special event programming, or documentary. They will produce video and audio programs; daily, weekly, and special programming.

**Ceramics: 0951**

**Grades: 9-10-11-12/Credit: .5**

Ceramic art explores materials and their relation to the various methods of forming clay. Projects include wheel-thrown ceramics, modeling, and coil and slab methods.

**Theater Arts I: 1241**

**Grades: 9-10-11-12/Credit: 1**

This elective course begins with basic acting techniques (facial expressions, body language, emotions, improvisation, and creative dramatics), the role of the actor in interpreting dramatic literature, the historical evolution of performance styles, and the introduction to stagecraft and costuming. Students will also learn how to translate from English to ASL and do playwriting. Students will have opportunities to write, act, and/or be part of the stage crew in a dramatic performance. *Out-of-school rehearsals for performances are required.*

**Theater Arts II: 1242**

**Grades: 10-11-12/Credit: 1**

This intermediate-level class is designed for students with some experience in theater classes. It promotes enjoyment and appreciation for all aspects of theater through opportunities to build significantly on existing skills. Classwork focuses on characterization and playwriting while improvisation, creative dramatics, scene work, and costuming are used to help students challenge and strengthen their acting skills and explore the technical aspect of scene work. Students will also strengthen their skills in translating from English to ASL. Students will have opportunities to write, act, and/or be part of the stage crew in a dramatic production. *Out-of-school rehearsals for performances are required.*

**Applied English & Communication I and II: 0954 / 0955 / 0944**

**Grades: 9-12 / Credits: .5 or 1**

The purpose of this course is to enable students develop and apply good communication skills. An emphasis is placed on signed and written communication. This is designed on the premise that the development of effective communication requires an understanding of how language works in a variety of communicative contexts. It provides opportunities for the acquisition and application of communicative skills through active engagement with a range of texts. It is also designed to instruct students with programs on the computer such as Adobe PhotoShop, Illustrator, InDesign, and iMovie or Final Cut Pro in preparation of layout, design, and communication principles for publication. Students will design and do layouts for academic programs/events, sport programs, special events, trivia facts, interviews, and etc., using photographs and digital imaging, scanner, videos, cameras, and appropriate software tools. Students will learn the four phases of journalism writing in a multimedia aspect: text features and structures such as headlines, leads, body, and revisions, purposes of writing for kinds of audiences, codes of ethics and standards of professional conduct, and will have opportunities to develop, write, and input news stories. (ENGLISH CREDIT ONLY)

# Career & Technical Education

## Architecture & Construction

Course Title And Number	Credit	9	10	11	12	Prerequisite
Introduction to Industrial Technology 1059	.5	X	X	X		
Cabinet Making & Furniture Design I 1161	1		X	X	X	Introduction to Industri- al Technology
Cabinet Making & Furniture Design II 1162	1			X	X	Cabinet Making & Furni- ture Design I

### **Introduction to Industrial Technology : 1059**

**Grade: 9 / Credit: .5**

An introductory level course designed to instruct students in the basic skills necessary to all occupations in the Construction, Manufacturing, and Transportation areas.

### **Cabinet Making & Furniture Design I : 1161**

**Grades: 10-11-12 / Credit: 1**

Students will learn the names and safety procedures for hand and power tools, how to operate woodworking equipment, how to plan and design a wood project, performing construction and fastening techniques, and remodeling a small project on KSD campus. Students will be exposed to the concepts, technical vocabulary, measurements and projects used in woodworking. All students will complete a woodworking project.

### **Cabinet Making & Furniture Design II : 1162**

**Grades: 11-12 / Credit: 1**

Students will continue to learn how to plan and design a wood project, to calculate board feet of lumber, perform construction and fastening techniques. Students will again be exposed to the concepts, technical vocabulary, measurements and projects used in woodworking. All students will complete woodworking projects.

# Career & Technical Education

## Manufacturing

Course Title and Number	Credit	9	10	11	12	Prerequisite
Production Technology 1058 Offered at Olathe North	.5		X	X	X	Introduction to Industrial Technology 1059

**Production Technology: 1052**

**Grade: 10-12 / Credit: .5**

**Prerequisite is Intro to Industrial Technology (Manufacturing).** This class will cover the names and uses of power tools, safety procedures, and measurement skills. Students will identify kinds of woods, draw a sketch, learn basic drafting functions, and to perform a variety of construction projects.

# Career & Technical Education

## Transportation, Distribution & Logistics

Course Title and Number	Credit	9	10	11	12	Prerequisite
Small Gas Engines 1053	.5	X	X	X	X	

**Small Gas Engines: 1053**

**Grades: 9-10-11-12 / Credit: .5**

The class will cover the technical vocabulary and function of small engine parts. Students will learn how to dismantle, re-assemble, and operate a small engine. The basic skills and methods of working on engines, as well as painting an engine will be included.



# Career & Technical Education

## Engineering & Technology

Course Title and Number	Credit	9	10	11	12	Prerequisite
Pre-Engineering Drawing/CAD I Offered at Olathe North	.5	X	X	X	X	
Engineering Drawing/CAD II Offered at Olathe North	.5	X	X	X	X	CAD I
Robotics I 0996	1	X	X	X	X	
Robotics II 1096	1		X	X	X	Robotics I
Robotics III 1196	1			X	X	Robotics II
Robotics IV 1296	1				X	Robotics III

### Pre-Engineering Drawing/CAD I:

**Grades: 9-10-11-12/ Credit: .5**

This is the introductory drafting technology class. Students learn basic fundamentals of manual engineering, drawing, and computer-aided drafting (CAD). Several forms of graphic and electronic communication are explored. Students are exposed to graphic design, problem-solving, research and design, and model construction.

### Engineering Drawing/CAD II:

**Grades: 9-10-11-12/ Credit: .5**

In this course technical types of drawings used in industry are explored. Students are presented with problem-solving situations involving the various types of communication systems worked on in CAD I.

**Robotics I      0996**  
**(Pending student interest)**

**Grades: 9-10-11-12/ Credits: 1.0**

The Robotics I course will help develop students' skills and knowledge so that they can design and develop robotic devices. Topics covered in the course may include mechanics, electrical and motor controls, pneumatics, computer basics, and programmable logic controllers. Students will design, build, and modify robots to complete target skills, usually with the support of established instructions. Students will use block code to program the robot and controller to complete specific skills. Students will drive robots to perform specific actions.

**Robotics II      1096**

**Grades: 10-11-12 / Credits: 1.0**

**Prerequisite: Robotics I** The Robotics II course will help develop students' skills and knowledge so that they can design and develop robotic devices. Topics covered in the course may include mechanics, electrical and motor controls, pneumatics, computer basics, and programmable logic controllers. Students will design, build, and modify robots to complete target skills, with some support of established instructions. Students will use block code to program the robot and controller to complete specific skills, and begin comparing block code with text code. Students will drive robots to perform specific actions.

**Robotics III      1196**

**Grades: 11-12 / Credits: 1.0**

**Prerequisite: Robotics II** The Robotics III course will help expand students' skills and knowledge so that they can further design and develop robotic devices. Topics covered in the course may include mechanics, electrical and motor controls, pneumatics, computer basics, and programmable logic controllers. Students will design, build, and modify robots to complete target skills, often without the use of established instructions. Students will use text code to program the robot and controller to complete specific skills. Students will drive robots to perform specific actions. Students will be expected to teach newer students the basics of robotics as well.

**Robotics IV      1296**

**Grades: 12 / Credits: 1.0**

**Prerequisite: Robotics III** The Robotics IV course will help expand students' skills and knowledge so that they can further design and develop robotic devices. Topics covered in the course may include more advanced mechanics, electrical and motor controls, pneumatics, computer basics, and programmable logic controllers. Students will design, build, and modify robots to complete target skills, often without the use of established instructions. Students will use text code to program the robot and controller to complete specific skills. Students will drive robots to perform specific actions. Students will be expected to teach newer students the basics of robotics as well. Students will be expected to work with a high degree of independence.

# \*Career Education

(Grades: 9-12)

Course Title And Number	Credit	9	10	11	12	Prerequisite
Early Childhood Aide 1148	1	X	X	X	X	Teacher Recommendation
Elementary Aide 1153	1	X	X	X	X	Teacher Recommendation
Library Aide 1152	1	X	X	X	X	Teacher Recommendation
Teacher Aide 1151	1		X	X	X	Teacher Recommendation
PE Aide 1156	1		X	X	X	Teacher Recommendation
Athletic Director Aide 1157	1		X	X	X	Teacher Recommendation
Career Training I 0971	.5	X	X			Teacher Recommendation
Career Training I 0972	1	X	X			Teacher Recommendation
Career Training I 0973	1.5	X	X			Teacher Recommendation
Career Training II 1071	.5		X	X		Teacher Recommendation
Career Training II 1072	1		X	X		Teacher Recommendation
Career Training II 1077	1.5		X	X		Teacher Recommendation
Career Training III 1171	.5		X	X	X	Teacher Recommendation
Career Training III 1172	1.0		X	X	X	Teacher Recommendation
Career Training III 1173	1.5		X	X	X	Teacher Recommendation
Career Training III 1276	2.5			X	X	Teacher Recommendation

Course Title And Number	Credit	9	10	11	12	Prerequisite
Career Training IV 1271	.5				X	
Career Training IV 1272	1.0				X	
Career Training IV 1273	1.5				X	Teacher Recommendation
KSTAR Career Training 1373					KS	
Vocational Life Studies 1079 Offered through the Olathe School District	1		X	X	X	

**\*Students in the Career Technical Education classes will sign a work agreement between worksite, CTE teachers, and parents.**

**Aides: Early Childhood (1148), Elementary (1153), Library (1152), Teacher (1151), PE (1156), Athletic Director (1157)**

**Pre-requisite: Teacher recommendation.**

Students will be assigned a specific work area and duties. Supervision will be provided by a job supervisor and teacher. Skills taught will include time management, related work applications and work evaluations. Students enrolled as an aide will receive credit. There are a limited number of work sites available on campus. Enrollment in this class requires approval from the head teacher.

**Career Training I: 0971      Grades 9-10/ Credit: .5**

**Career Training I: 0972      Grades 9-10/ Credit: 1**

**Career Training I: 0973      Grades 9-10/ Credit: 1.5**

Career Training I allows students to expand their knowledge and gain work place skills in a variety of settings. Students, with guidance from the work experience teacher, will secure part time employment on or off campus. They will apply skills acquired through coursework to specific job expectations. Work experience facilitates the transition from school to full-time employment, post-secondary education, or vocational training. Only students enrolled in work experience will receive credit for part time work.

**Career Training II: 1071    Grades 10-11/ Credit: .5**

**Career Training II: 1072    Grades 10-11/ Credit: 1**

**Career Training II: 1077    Grades 10-11/ Credit: 1.5**

This course allows students to expand their knowledge and gain work place skills in a variety of settings. Students, with guidance from the work experience teacher, will secure part time employment on or off campus. They will apply skills acquired through coursework to specific job expectations. Work experience facilitates the transition from school to full-time employment, post-secondary education, or vocational training. Only students enrolled in work experience will receive credit for part time work.

**Career Training III: 1171    Grades 11-12/ Credit: .5**

**Career Training III: 1172    Grades 11-12/ Credit: 1**

**Career Training III: 1173    Grades 11-12/ Credit: 1.5**

**Career Training III: 1276    Grades 11-12/ Credit: 2.5**

Career Training III allows students to expand their knowledge and experience about work and participate in a job. With guidance from school staff, students will secure part time employment off campus. Students will apply skills acquired from coursework to specific job expectations through real-life experience working for a supervisor on a job. Only students enrolled in career training will receive credit for part time work. Students work approximately two hours each day, four days a week. Supervision is provided at the job site by the job supervisor, teacher, and/or job coach. School vans are used to transport students. (One to three class periods daily)

**Career Training IV: 1271    Grades 12/ Credit: .5**

**Career Training IV: 1272    Grades 12/ Credit: 1**

**Career Training IV: 1273    Grades 12/ Credit: 1.5**

Career Training IV allows students to expand their knowledge and gain work place skills in a variety of settings. Students, with guidance from the work experience teacher, will secure part time employment on or off campus. They will apply skills acquired through coursework to specific job expectations. Work experience facilitates the transition from school to full-time employment, post-secondary education, or vocational training. Only students enrolled in work experience will receive credit for part time work. Prerequisite: Head Teacher/Teacher approval.

**KSTAR Career Training: 1373**

**Grades: KSTAR/**

Post-Graduate Career Training helps students match their interests and aptitudes to career options with a focus on using employment information effectively, acquiring and improving job-seeking and interview skills, composing job applications and resumes, and learning the skills needed to remain in and advance within the workplace. Course content may also include consumer education and personal money management topics. Designed for students who have met graduation requirements but choose to stay in school until age 21.

# Special Courses

## Student Support Classes

Course Title and Number	Credit	9	10	11	12	Prerequisite
Academic Support 0995, 1095, 1195, 1295	.5	X	X	X	X	Placement in this class is by Head Teacher action only

**Academic Support: 0995, 1095, 1195, 1295**

**Grades 9-12/ Credit: .5**

Academic Support is a class to support students deemed to be at risk for failing credited classes. The course content may include study skills; individual tutorials; job preparation and readiness; application or interview skills; communication skills; time management skills; personal assessment and awareness activities and supervised study time.

## **DUAL PLACEMENT**

### **OLATHE NORTH HIGH SCHOOL**

[www.olatheschools.org/olathenorth](http://www.olatheschools.org/olathenorth)

*Olathe North High School (ONHS) is located about five blocks from KSD. Students in grades 9-12 have the option of enrolling in classes at ONHS. Interpreters are provided for students enrolled in classes. To enroll in ONHS classes, KSD students go through the IEP process, meeting with their KSD primary provider, head teacher, parents and the Dual Placement Coordinator. If the student is from outside the Olathe School District, their LEA representative must approve the dual placement as the home school district may need to assist with paying for program fees. Consideration of enrollment at ONHS will be based on the following criteria: Student behavior should be conducive to success: The student is able to attend to academic/vocational tasks. The student has appropriate adaptive social skills. The student has a positive self-concept and confidence. The student demonstrates interest/talent in a particular academic/vocational/extra-curricular area. The student demonstrates receptive and expressive communication skills appropriate to the class(es)/activity(ies) under consideration. The student is likely to meet the objectives of the classroom placement with appropriate modifications and adaptations.*

## **21<sup>st</sup> Century Transfer Programs**

**Olathe North**  
**www.olatheschools.com**

**Health Science: Sports Medicine & Exercise Science Academy**

**Olathe Northwest High School**  
**www.olatheschools.com**

**A/V Communication: eComm Academy**  
**Engineering & Applied Mathematics: Engineering Academy**  
**Web & Digital Communications: eComm Academy**

**Olathe East High School/Olathe South High School**  
**www.olatheschools.com**

**Construction & Design: Design Academy**  
**Engineering & Applied Mathematics: Design Academy**  
**Government & Public Administration: Civic Leadership Academy**  
**Teaching/Training: Future Educators Academy**

**Olathe West High School**  
**www.olatheschools.com**

**Corrections, Security & Law Enforcement: Public Safety Academy**  
**Emergency & Fire Management Services: Public Safety Academy**  
**Energy: Green Tech Academy**

## **OATC - Olathe Advanced Technical Center: (Previously Millcreek)**

### **Olathe School District**

The OATC is located on the campus of Olathe North. Two-year training programs are offered in the following areas:

***Automotive Collision Technology***  
***Welding Technology***  
***Animal Science & Research***

***Automotive Technology***  
***Culinary Arts***  
***Aviation Electronics***

***Construction Trades***  
***Healthcare Sciences***

KSD students may tour the program and apply during their sophomore year. Upon application, a student will be scheduled for an assessment at OATC to determine whether the student can benefit from the training offered. KSD students compete with Olathe public school students for training spots in the classes. OATC programs are two-year programs intended to prepare the student for job entry skills upon completion of the program. Classes are three-hour blocks in either a morning or an afternoon session.

### **OATC Course Descriptions**

#### **Auto Collision**

**Grades: 11 and 12**

**Credits: 3**

Students use state of the art equipment to learn detailing, interior, exterior trim, reconstruction, repair and replace vehicle body components.

#### **Auto Technology**

**Grades: 11 and 12**

**Credits: 3**

Areas of instruction include engine performance, braking systems, automotive electrical, suspension and steering, engine repair and air conditioning.

#### **Construction Trades**

**Grades: 11 and 12**

**Credits: 3**

Students learn about the construction of a home or building from the foundation to the finish work.

#### **Welding Technology**

**Grades: 11 and 12**

**Credits: 3**

Students learn to cut and join metals by the use of heat in the fabrication and repair of metal parts.

#### **Culinary Arts**

**Grades: 11 and 12**

**Credits: 3**

Students learn from industry professionals and work in state-of-the-art commercial kitchens.

#### **Healthcare Sciences**

**Grades: 11 and 12**

**Credits: 3**

Students learn about the prevention, diagnosis, and treatment of disease, illness, injury, and other physical and mental impairments in people.

#### **Animal Science & Research**

**Grades: 11 and 12**

**Credits: 3**

Students will explore the world through agriculture, plants, animals, and the environment.

#### **Aviation Electronics**

**Grades: 11 and 12**

**Credits: 3**

Students learn basic electronics, how computers work, and how to build a computer.



## **Transition Into Post Secondary (TIPS)**

### **Johnson County Community College**

**Grade: 12 or KSTAR Credits: High School 1**

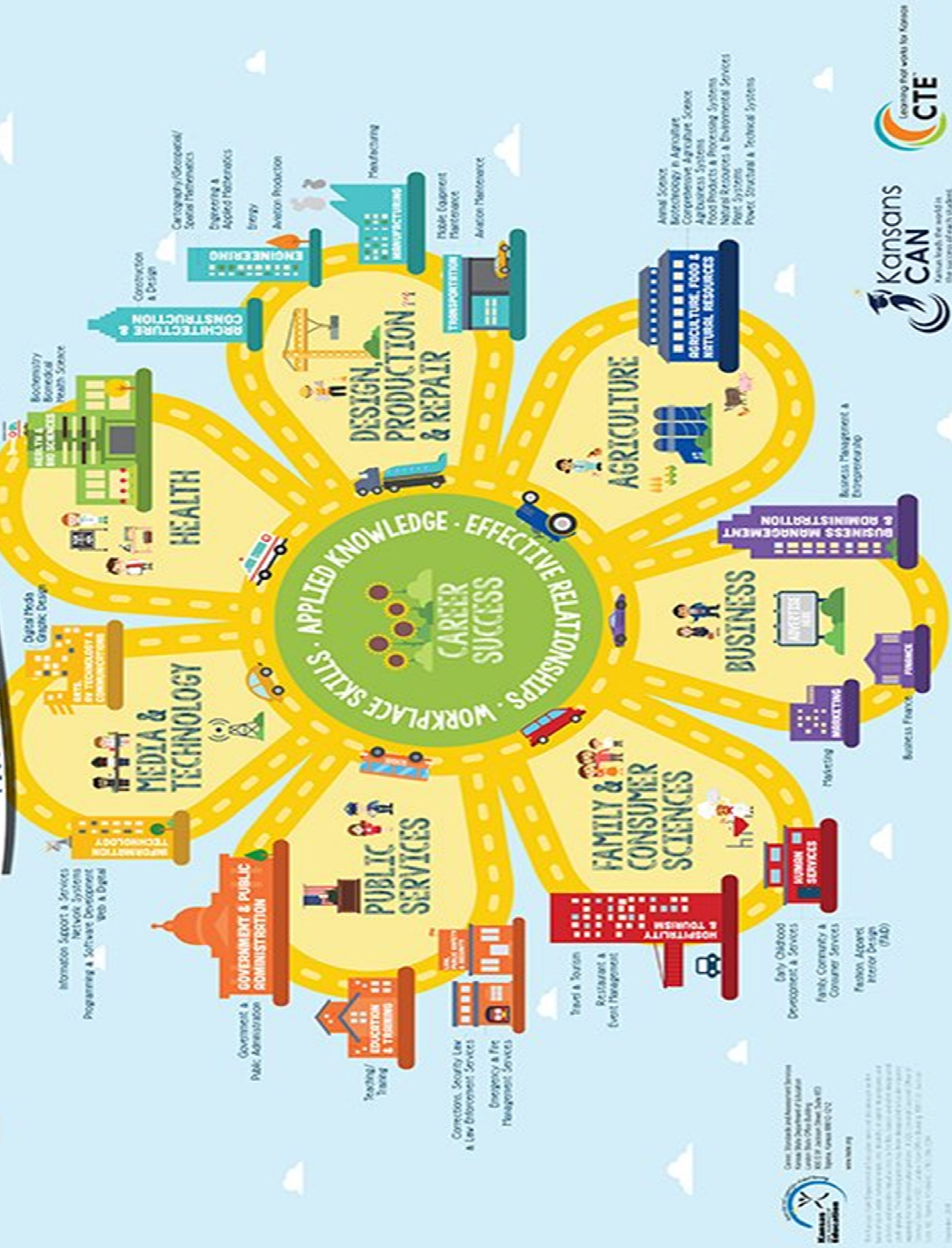
**(KSTAR Students do NOT receive high school credit for TIPS)**

**College Elective Credits: 3**

Transition Into Post Secondary (TIPS) is a dual credit transition class designed to teach students valuable skills to successfully leave their secondary programs and enter college or other training programs or the work force upon graduation. It is provided in conjunction with Johnson County Community College (JCCC) and KSD transition coordinator. This class helps students identify and evaluate personal goals, priorities, aptitudes, and interests with the goal of helping them make informed decisions about their careers. This class exposes students to various sources of information on career and training options and may also assist them in developing job search and employability skills. Students earn 3 college elective credits. College Tuition fees apply.

# KANSAS CAREERS

FIELDS • CLUSTERS • PATHWAYS



Division of Career, Technical and Assessment Services  
 Kansas State Department of Education  
 1001 S. Wacker Drive, Topeka, KS 66606  
 Phone: 785-235-2200  
 Fax: 785-235-2201  
 www.kasde.org

This infographic is a representation of the career clusters and pathways in Kansas. It is not intended to be a comprehensive list of all careers in these fields. The information is for informational purposes only. © 2014 Kansas State Department of Education. All rights reserved.

**Kansans CAN**  
 Kansas leads the world in the success of each student.

Learning that works for Kansas  
**CTE**