

Hello, St. Anne Families.

Thank you to all the families who attended this month's Coffee with the Principal. It was great to connect with all of you and to hear your thoughts, suggestions, concerns, and appreciation regarding what we do here at St. Anne. I hope to see another great turnout at our next meeting.

Today is our Tricky-Tray kickoff! We have amazing prices and delicious food. Tickets are available at the door. Thank you to everyone who has worked so hard to set everything up to make it a success! You are all appreciated more than you know.

Report cards will be posted after 3:00 this afternoon.

Thank you for all your cooperation and patience during drop off and pick up. I have been working with the local police department and UGI in an attempt to make dismissal safer. Please do not make a U-Turn on Cloverleaf in an attempt to travel back down Hickory.

Reregistration is continuing. You now have the ability to register on-line through Option C.

Finally, please be sure to read through the communication. You don't want to miss out on important information!

Thank you for entrusting your children to St. Anne School.

Have a blessed weekend.

Mrs. Karen Miklus



Little Saints Preschool 2025-2026
Registration Fee: \$100

Explorer 3 Year-Old Program M-F 5 Day Morning 8:30-11:00	\$3,000 or	\$300 per month (10 payments)
Pre-K Four Year-Old Program M-F 5 Day Morning 8:30-11:00	\$3,500 or	\$350 per month (10 payments)
Pre-K Four Year-Old Program M-F 5 Day Full Day 8:30-2:00	\$5,000 or	\$500 per month (10 payments)

***Registration Fee is Non-refundable and is required for registration.**

**** All new students must supply copies of the following:**

- ❖ Birth Certificate
- ❖ Baptismal Certificate
- ❖ Current Immunization Record



St. Anne School

2025-2026 Tuition Schedule

Kindergarten – 8th Grade

Non-refundable new student enrollment fee: \$200

Cost to Educate Church Subsidy Sibling Discount Final Payment

One Child	\$6,485.00	\$1,500.00	—	\$4,985.00
Two Children	\$12,970.00	\$3,000.00	\$2,045.00	\$7,925.00
Three + Children	\$19,455.00	\$4,500.00	\$4,980.00	\$9,975.00

****Parishioners contributing \$350 annually to St. Anne Church Mass Collection receive a \$450 Tuition Discount.***

	1 Payment 5% discount	2 Payments Full Rate	4 Payments Full Rate	10 Payments Full Rate
One Child	\$4,750.00	\$2,492.50	\$1,246.25	\$498.50
Two Children	\$7,550.00	\$3,962.50	\$1,981.25	\$792.50
Three + Children	\$9,500.00	\$4,987.50	\$2,493.75	\$997.50

* Tuition payments are managed via the STS Tuition Payment Program.

*Payments may be made by check, money order, cash, credit card, or via STS.

Checks should be made to St. Anne School.

**** All new students must supply copies of the following: Birth Certificate, Baptismal Certificate, and Current Immunization Record**

St. Anne School STS Tuition Assistance Process

STS Financial Aid Application

St Anne School ID

20398

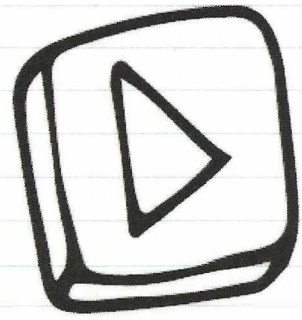
Steps to complete the STS Financial Aid Application:

1. **Log onto the St. Anne School website homepage and click the "Parent" tab at the top of the home page.** Scroll down to the "Simple Tuition Solutions Tuition and Tuition Assistance" then click the "STS Tuition Information"
2. If you already have an account, click **"LOG IN HERE"**
3. If you do not have an account, click on the Orange Button that says, **"Create My Account."** Once you create your account will be sent to a page that will allow you to **"Start a new Application."**
******NOTE:** You may include ALL your students on one application, even if they attend other private schools.
4. The application Process is 8 Steps counting the payment step, each step will save as you advance to the next step. You can use the 8-step tool bar across the top of the page to toggle back to a previous step and make any necessary edits. However, please note, once you complete the process of uploading your required financial documents it will lock the application from all editing. At this point, if any changes would need to be made to the submitting application, you can gladly email STS at support@simpletuitionsolutions.org or call 717.599.7611 option 1.
5. After completion of the payment process you will be advised as to which financial document you need to provide STS. You will also be sent an email that outlines what you need to provide, as well as introduce you to the application processor who will be managing the review of your application.
PLEASE NOTE: You can simply scan or take a photo of your financial documents and upload them into STS's system using STS's convenient upload feature. This is the fastest way to provide STS with your required financial documentation. However, you can also mail the signed copies of your financial documents to STS to the following address: **Simple Tuition Solutions, LLC, P.O. Box 779 Camp Hill, PA 17001.** Once your financial documents are loaded, the system will lock the application from all editing. At this point, if any changes would need to be made to the submitting application, you can gladly email STS at support@simpletuitionsolutions.org or call 717.599.7611 option 1.

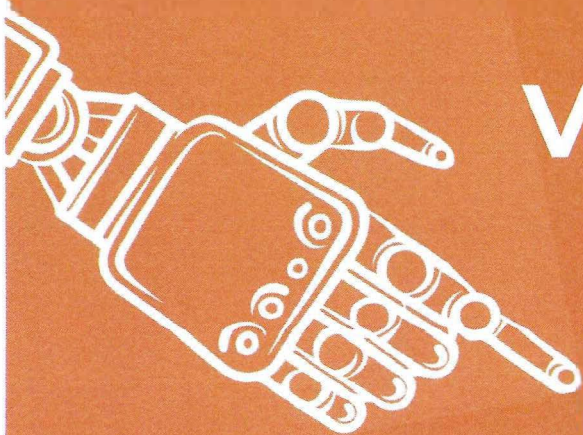
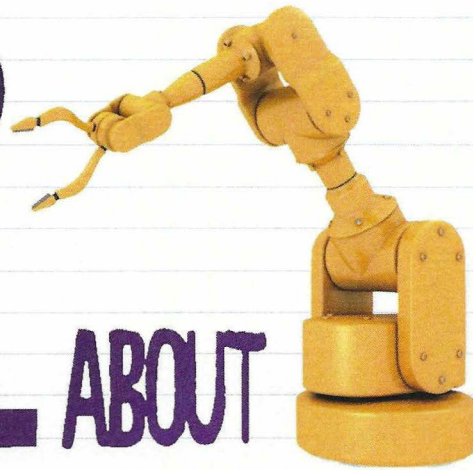
Finally, once STS has received all the required financial documentation from you, STS's application processors will verify the data and review your entire application per Pennsylvania State Law to determine your eligibility for any State Programs. You will be notified directly via email upon the completion of this verification/review process. In addition, the results will also be available to your School, or any Scholarship Organization associated with the scholarship.

*****Please note: STS handles the verification and eligibility determination for aid, BUT DOES NOT HAVE ANY input, control, or insight into determination into scholarship amounts or how and when they are awarded.**

Questions about specific tuition and scholarship amounts should be directed to: Mrs. Vasko at: rvasko@stannebethlehem.org



WHAT'S
SO COOL ABOUT
MANUFACTURING?TM
LEHIGH VALLEY 2025

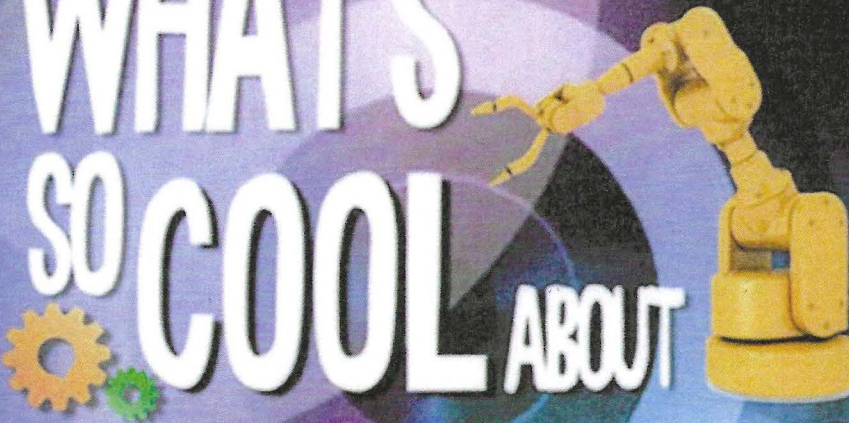


VOTING OPEN

March 17-19

WhatsSoCool.org

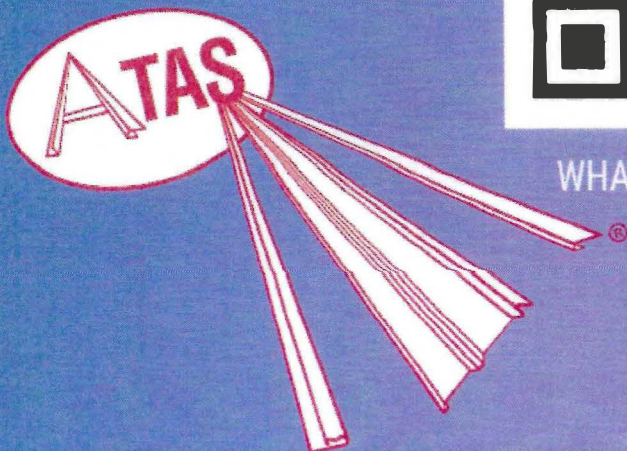
WHAT'S SO COOL ABOUT MANUFACTURING?™

A yellow robotic arm is positioned on the right side of the title, reaching towards the word 'COOL'. To the left of 'COOL' are two interlocking gears, one orange and one green.

VOTE FOR ST. ANNE'S!
Voting open: March 17-19



WHATSSOCOOL.ORG



CANNED FOOD DRIVE



**MARCH
5-18**

Classroom with the most
donations wins a pizza
party.

**Donations benefit New
Bethany ministries.**

Sponsored by Izzy & Olivia Hann, and Maddy Soresi.

St. Anne School - Parent School Association (PSA)

CALENDAR OF EVENTS 2024-2025

(as of 3/6/25 – subject to change)

Sunday, September 15 – Weds, September 18, 2024	Scholastic Book Fair
Monday, September 16, 2024	PSA Meeting 6pm
Friday, September 27, 2024	Dine & Donate – Panera
Monday, October 14 – Saturday, October 19, 2024	Casper PSA Theater support
Monday, October 21, 2024	PSA Meeting 6pm
Thursday, October 31, 2024	Family Pumpkin Carving Night
Thursday, November 7, 2024	Dine & Donate – Pat's Bistro
Thursday, November 14, 2024	Bayou Boys Pierogi pick up
Friday, November 15, 2024	Dance-A-Thon
Monday, November 18, 2024	PSA Meeting 6pm
Saturday, November 30, 2024	Phantom's Night
Thurs & Fri, December 5 & 6, 2024	Gertrude Hawk pick up – Christmas
Monday, December 9 – Weds, December 11, 2024	Santa Shop
Monday, December 16, 2024	PSA Meeting 6pm
Thursday, December 19, 2024	Family Gingerbread House Night
Monday, January 13, 2025	PSA Meeting 6pm
Sunday, January 26 – Weds, January 29, 2025	Scholastic Book Fair
Sunday, January 26 – Friday, January 31, 2025	Catholic Schools Week
Monday, February 10, 2025	PSA Meeting 6pm
Thursday, February 13, 2025	Mr. Pastie pick up
Wednesday, February 19, 2025	Dine & Donate – Martellucci's
Saturday, February 22, 2025	Middle School Dance – Valentine
Tuesday, March 4, 2025	Fastnacht Day – Fastnachts for all!
Friday, March 14 – Sunday, March 16, 2025	Tricky Tray
Monday, March 24, 2025	PSA Meeting 6pm
_____, April __, 2025	Gertrude Hawk pick up - Easter
Monday, April 14, 2025	PSA Meeting 6pm
_____, April __, 2025	Matey's Pizza pick up
Friday, April 25, 2025	Pretzel Day – Pretzels for all!
_____, April __, 2025	Dine & Donate – TBD
Friday, May 2, 2025	Middle School Dance - Farewell
Monday, May 5 – Friday, May 9, 2025	Teacher Appreciation Week
Wednesday, May 7, 2025	Iron Pigs Night
Thursday, May 15, 2025	Talent Show
Monday, May 19, 2025	PSA Meeting 6pm
Wednesday, May 28, 2025	Oogie's End of Year Ice Cream Truck
Tuesday, June 3 & Wednesday, June 4, 2025	Olympic Days

BECAHI 2025

INFORMATION SESSION



TIME
8:30-10:30AM

TUESDAY
APRIL 8, 2025

AT BETHLEHEM
CATHOLIC H.S.

THOSE INVITED:
**7TH & 8TH
GRADERS AND
PARENTS**

- Meet with administration and faculty
- Learn about curriculum, activities, and tuition assistance
- Take a tour of the school while classes are in session
- 7th and 8th grade students are welcome to stay for a "shadow visit"

REGISTRATION REQUIRED | CONTACT CHRISTINE CALANTONI
ccalantoni@becahi.org | 610-866-0791 x313



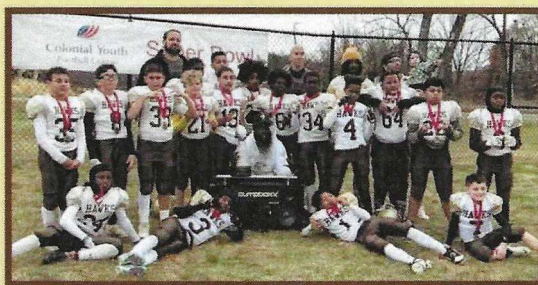
BECAHI JUNIOR HAWK



FOOTBALL & CHEER REGISTRATION 2025



**Register
Here**



Varsity Tackle - \$140

- Cannot turn 12 before August 1
- 7th graders under 100.9 lbs are eligible

JV Tackle - \$140

- Cannot turn 10 before August 1

Competitive Flag - \$110

- Cannot turn 8 before August 1

Rookies - \$100

- Cannot turn 6 before August 1

Cheer - \$100

Sibling Discounts!
*First sibling \$20 off
*Second sibling \$40 off



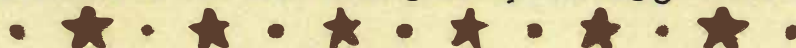
Colonial Youth
Football League



[leagues.bluesombrero.com/
bethlehemjrhawks](https://leagues.bluesombrero.com/bethlehemjrhawks)



Questions? Email Dan Vidal @ becajrhawks@gmail.com





REGISTER HERE:



April 2, 9, 16, 23, 30, May 7, 2025
Wednesday nights 6:30 – 7:30 pm
St. Luke's SportsPlex

4636 Crackersport Road, Allentown, PA 18104

Our 6 week camp is designed to build a solid technical foundation in speed and agility, aimed at enhancing your athletic performance in your sport. Each session is carefully structured, grounded in science-based principles, and focused on delivering measurable results. Key areas of focus will include acceleration, maximum velocity, change of direction, and agility, ensuring comprehensive development for every athlete.

Our mission is to equip your children with the competitive edge they need to reach their fullest potential. We are committed to instilling lasting training habits that will continue to benefit them long after the program ends. We can't wait to welcome you and your child to our camp soon!

Cost: \$99

Ages: 5th – 7th grade